

# Instructions for dividing hard drives right in Windows 10

Is your C drive capacity too large? Want to split hard drive capacity into many different small drives? Shrink Volume is one of Microsoft's great, very handy features that equips the operating system since Windows Vista until now, making it easier for users to manage and split the drive capacity as desired. Please read the article below for reference steps!

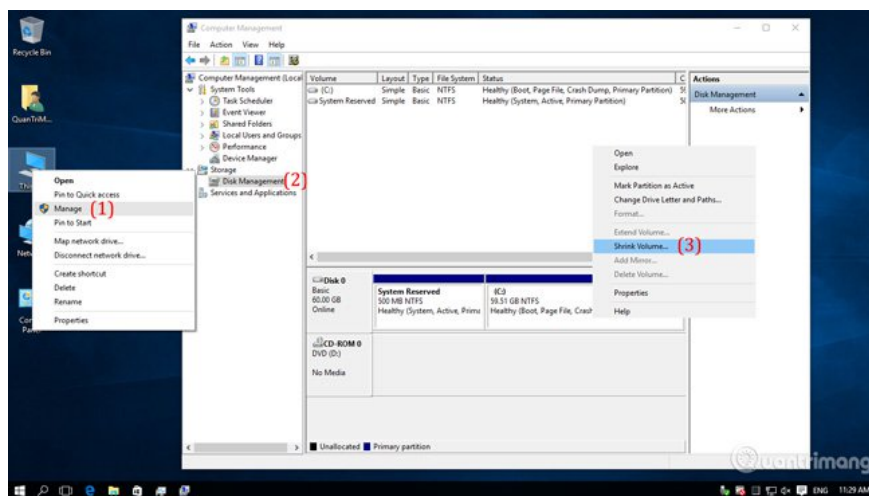
Is your C drive capacity too large? Want to split hard drive capacity into many different small drives? **Shrink Volume** is one of Microsoft's great, very handy features that equips the operating system since Windows Vista until now, making it easier for users to manage and split the drive capacity as desired.

Please read the article below for reference steps!

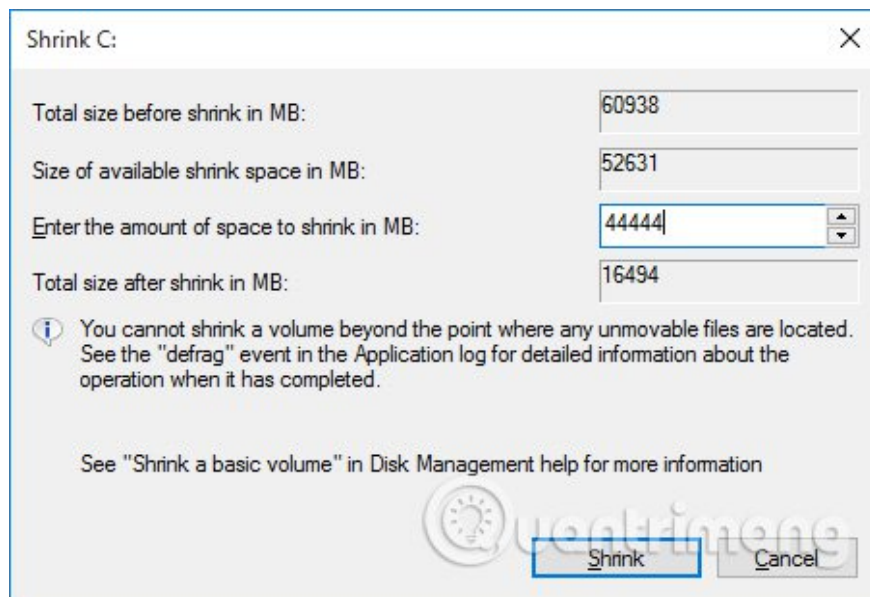
1. See the article on dividing and merging hard drives in Windows 7
2. How to display the icon My Computer - This PC on Windows 10
3. How to create My Computer's shortcut?

## Steps to divide the hard drive in Windows 10

First, you right-click on this **PC icon > Manage (1) > select Disk Management (2) > right-click the partition to divide capacity> Shrink Volume (3)** as shown below:

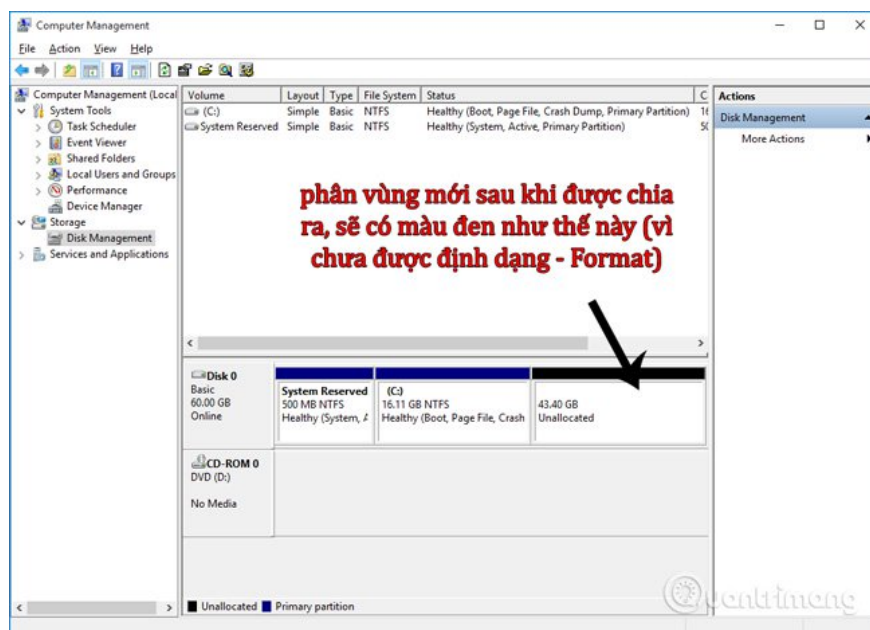


Windows will calculate and display the capacity for splitting, in this step you will see four parameters appear in the table:

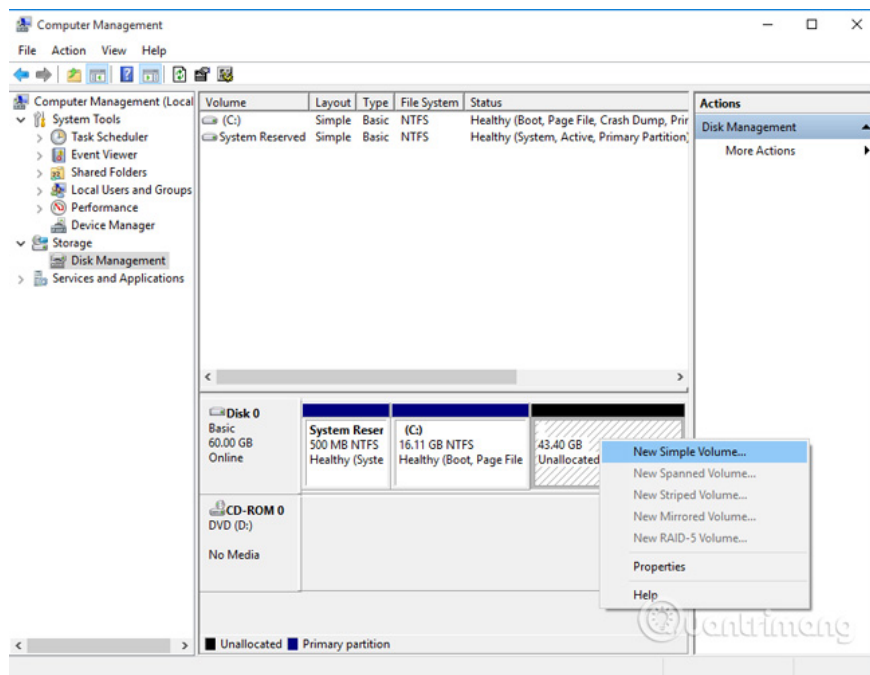


1. **Total size before shrink in MB** : total volume of the partition, in MB units (1024 MB = 1GB).
2. **Kích cỡ của thu nhỏ sẽ sẵn sàng trong MB** : maximum size that allows you to split.
3. Hãy nhập một số thích hợp để **shrink trong MB** : the size you want to split into a new partition (we will type the number in MB units here, as for example I enter 44444MB ~ 40GB)
4. **Total size after shrink in MB** : space left when we split the partition.

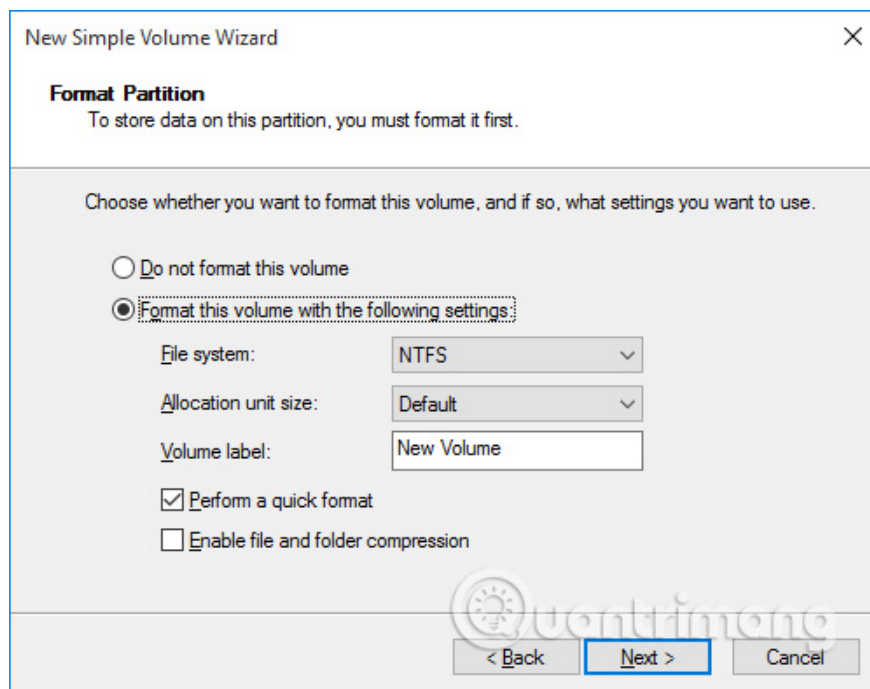
Click Shrink to start dividing the hard drive, depending on the size of the hard drive and the computer configuration, this process will be fast or slow (as in this example, dividing 40GB will take about 1 minute). After the split, you will see the new partition appear as black as shown below:



To use the new partition, we need to format - Format for that partition. Right-click on the black area > **New Simple Volume** :

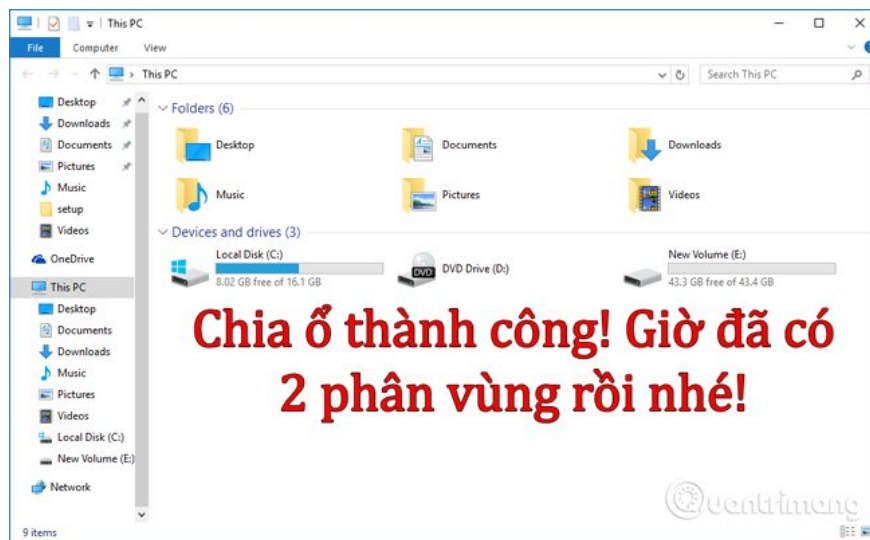


This step is not complicated at all, you can continue to **Next> Next** :



Keep the file system format as NTFS, and check the box below

And this is our result:



*Good luck!*

You finished reading the article "**Instructions for dividing hard drives right in Windows 10**" edited by the [TipsMake](#) team. We hope this article has provided you with many useful tech tips and tricks. You can search for similar articles on tips and guides. Thank you for reading and for following us regularly.

---