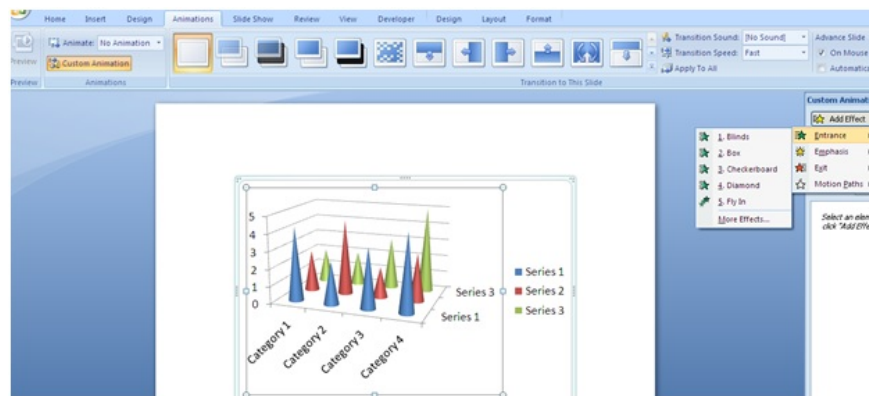


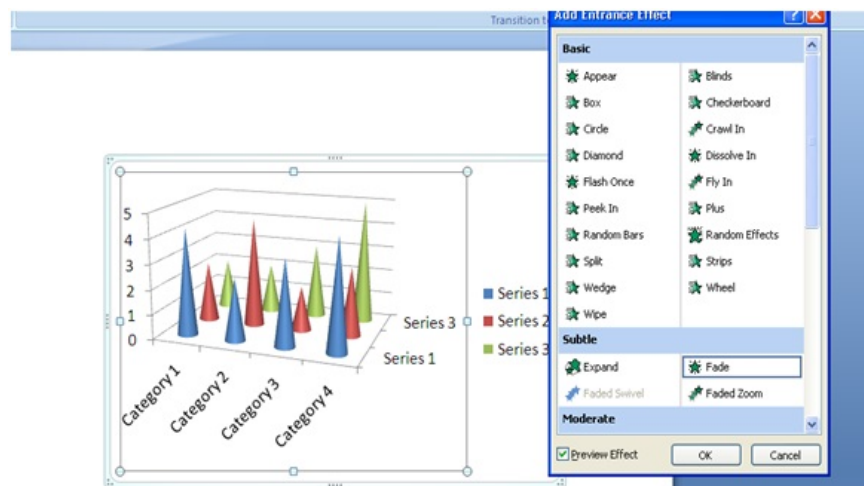
Instructions for displaying charts in powerpoint 2007

When you create a chart showing a certain table of data in Powerpoint 2007. But you do not know how to customize it as you like, refer to the article below.

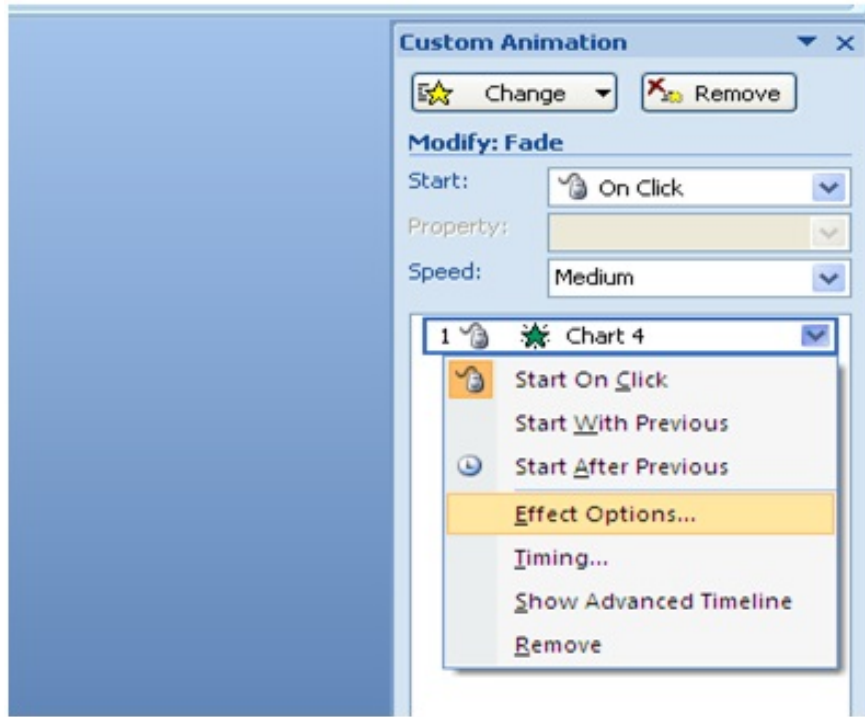
First, draw the chart you want. Then click on the chart, select Animations, select Custom Animation and select Add Effect



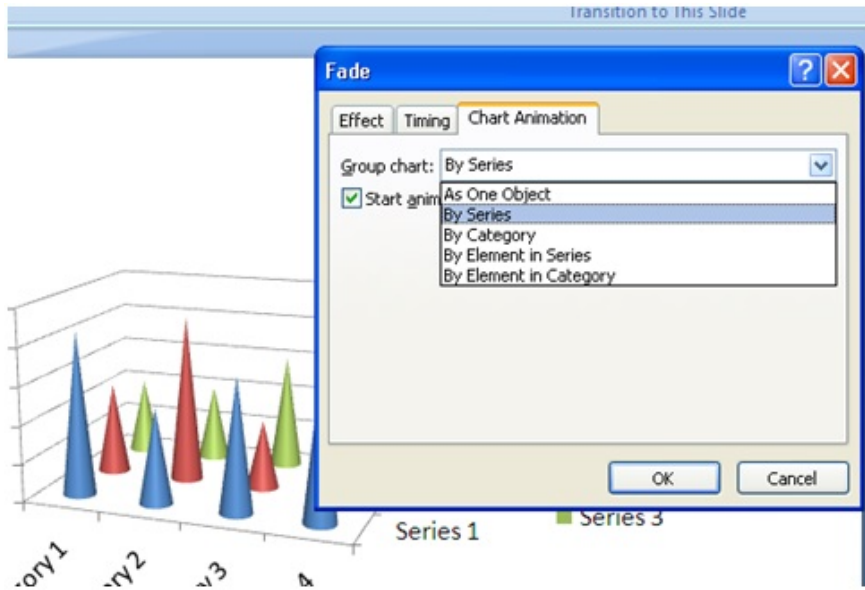
Then in Add Effect you select Entrance select Fade click ok



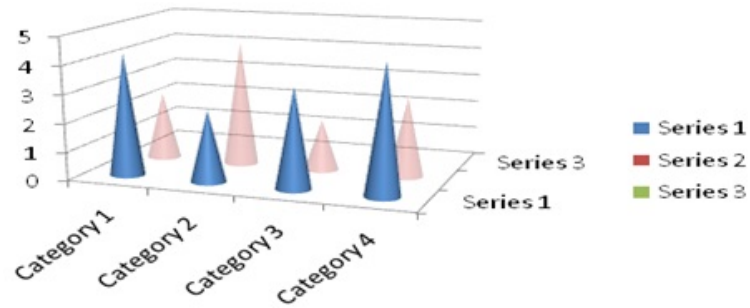
Next step you look at the right corner of the screen where the effect you have just selected for the chart is displayed Click the arrow and select Effect Option



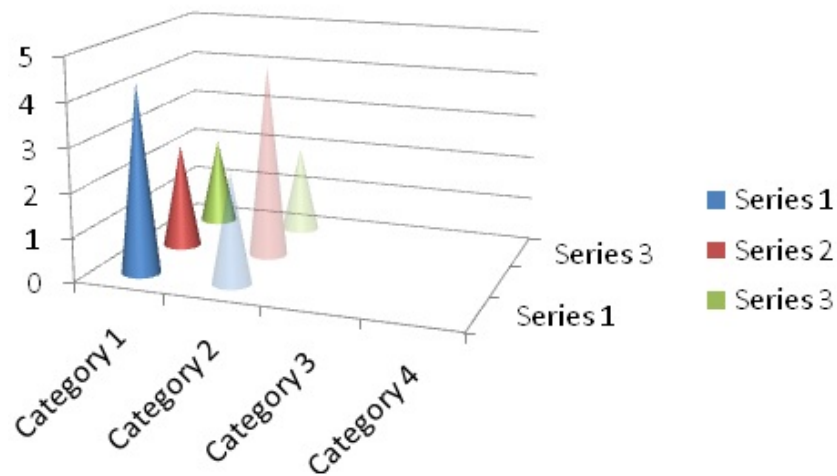
When you select the Effect Option, a dialog box as shown below, you select Chart Animation. Here you will see the options that are appearing under each Series or Category



When you select By Series, each value column in the chart will appear as shown below



Or when you want to select By Category your chart columns will be displayed as follows



For other tables, like columns or circles, you can do the same. Good luck.

You finished reading the article "**Instructions for displaying charts in powerpoint 2007**" edited by the [TipsMake](#) team. We hope this article has provided you with many useful tech tips and tricks. You can search for similar articles on tips and guides. Thank you for reading and for following us regularly.