

Instructions for deleting table paths in Word

In the process of creating tables on Word, sometimes you need to delete some table lines to meet needs or make the table easier to see. So how can I delete the table line and keep the content in Word?

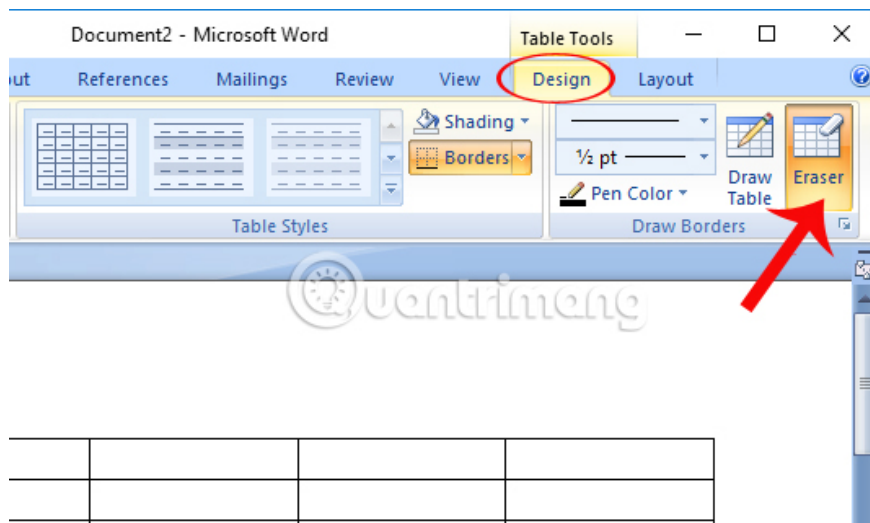
Creating tables is extremely simple and basic operation in Word. And to quickly delete a table on Word is extremely simple, when you access the Table Tools and press Delete. However, to delete 1 or 1 of the number of lines in the table such as the line in the title of the table, it is impossible to press Delete. In the following article, the Network Administrator will guide you how to delete some of the table paths, delete the entire table and delete the table, but still retain the text in the tables and layout.

The following article performs with the Word 2007 version, but the other version you do is similar.

1. Delete Word table contours:

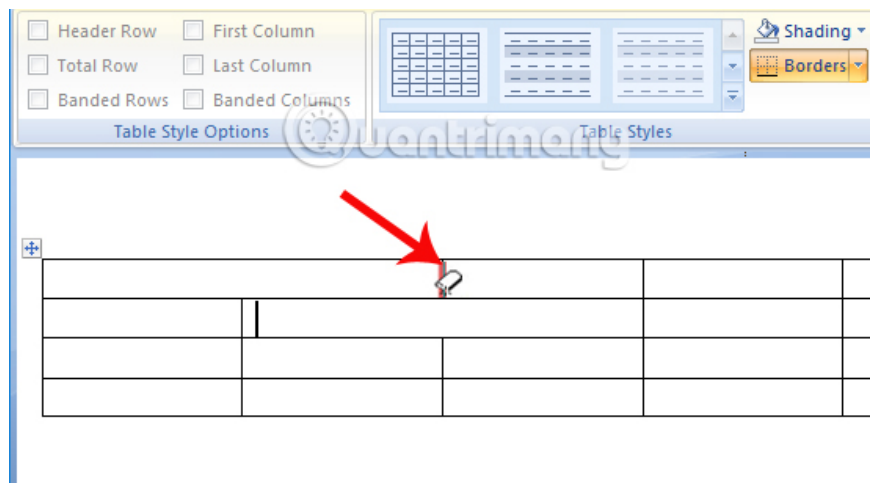
Step 1:

At the table content in Word, we point the mouse at the top of the table and click **Table Tools> Design> Eraser**



Step 2:

Appearance eraser icon. We just need to **move the eraser to any line to delete** and **left click** to delete. Users perform the same operation with other lines that they want to delete.

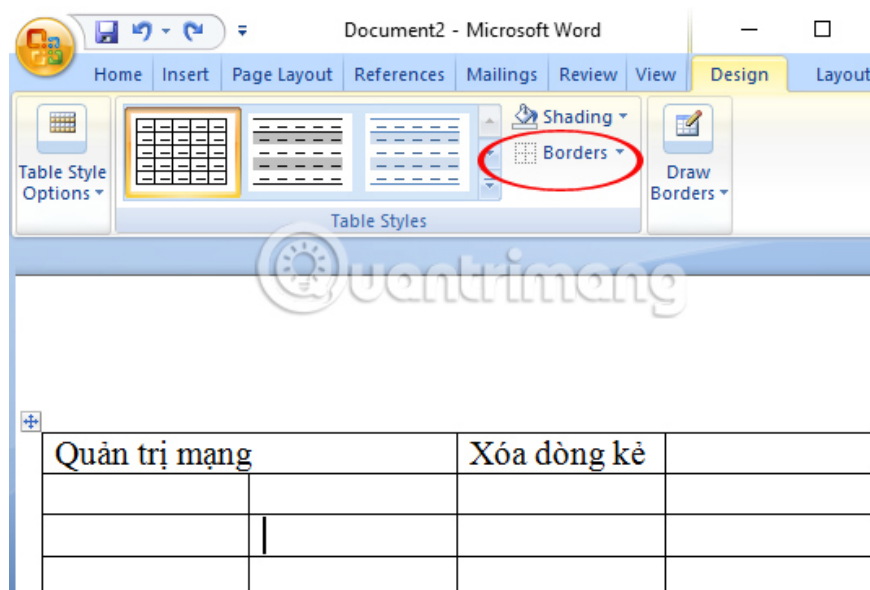


2. Delete the line in a Word box:

In case you want to delete the line in a table cell, move the colorless border bar.

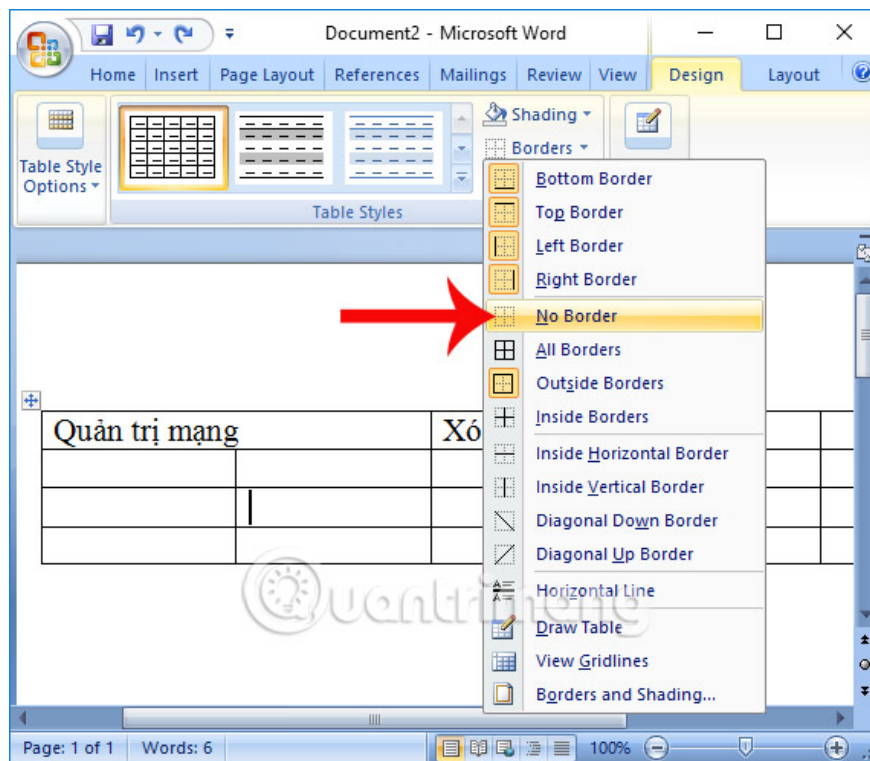
Step 1:

At the table content in Word, we place the mouse cursor in the cell that wants to delete the line and follow the path of **Table Tools > Design > Borders**.

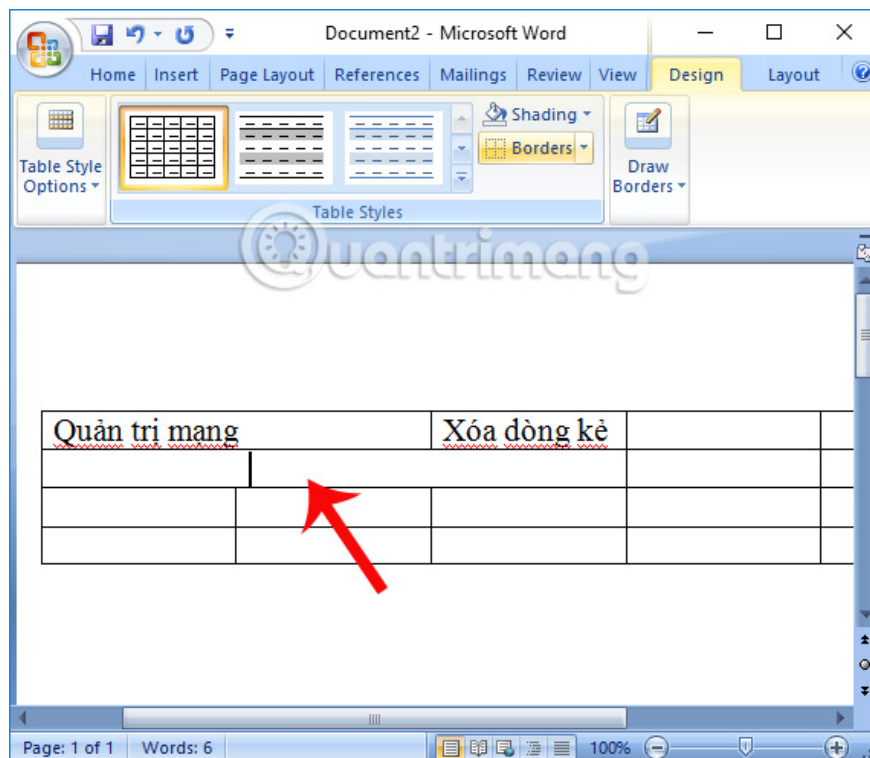


Step 2:

Next, click on **No Border** to delete all the lines of the table



The end result is that the lines in a cell have been deleted.

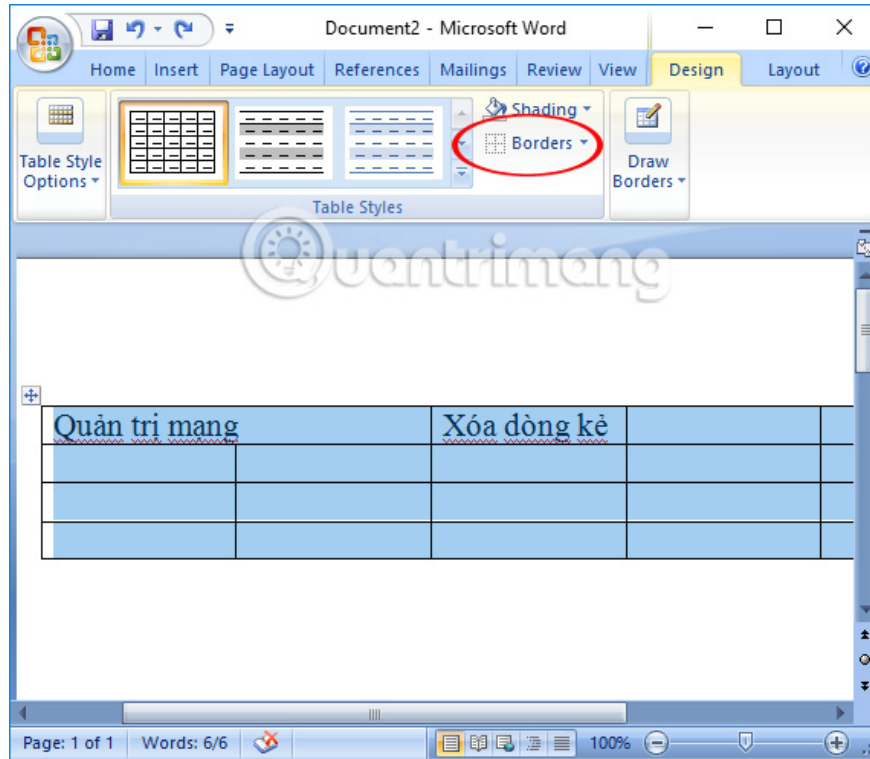


3. Delete the table and keep the text and layout:

In addition to the need to delete the lines in each cell, we can also choose to delete the entire table but still retain all the content and layout in the table.

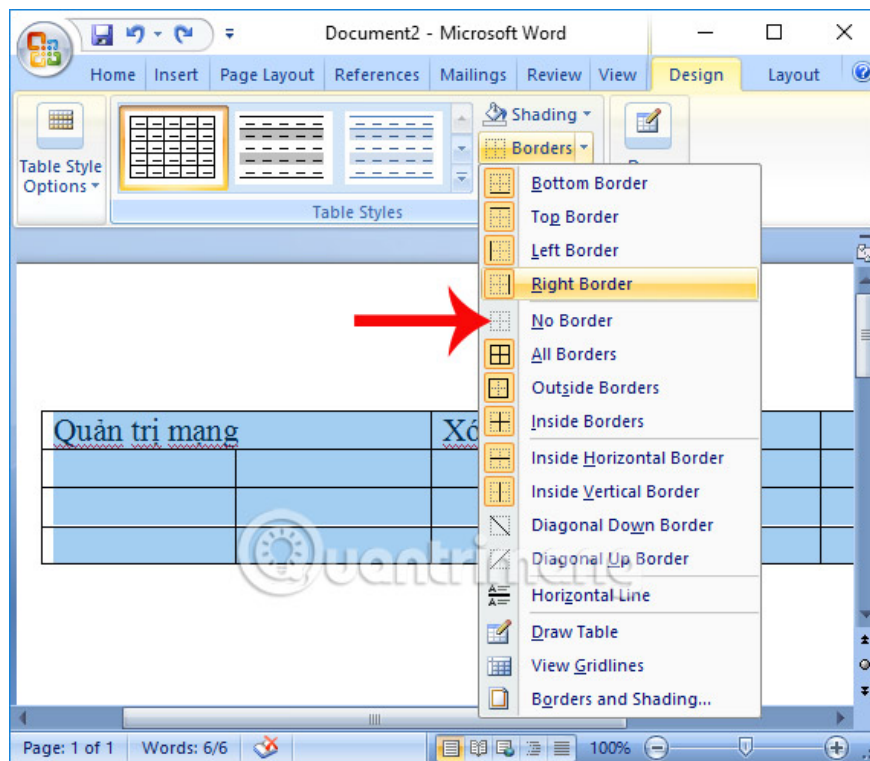
Step 1:

At the table you want to delete, black out the entire table and click **Table Tools> Design> Borders** .

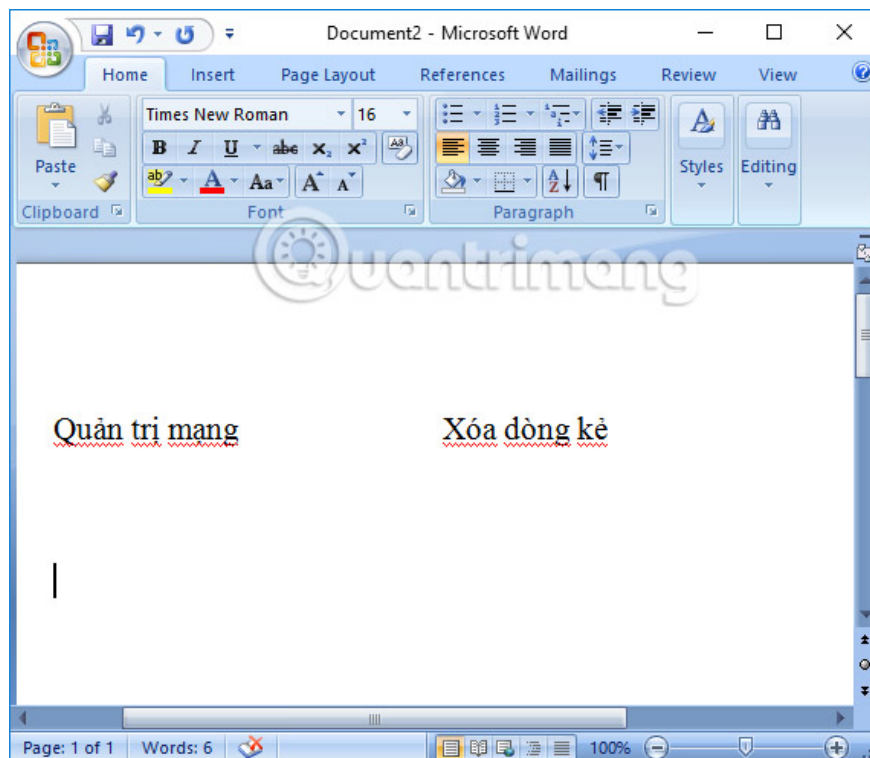


Step 2:

Then, click on **No Border** .



Thus the table will disappear but still retain the text and layout in the table.



Here are some tips when we work with tables on Word, including how to delete lines in the table or delete tables but still retain content and layout. Depending on the need to customize the table, we choose 1 of the 3 editing techniques above.

Refer to the following articles:

1. Create a quick dot (.....) line in Microsoft Word
1. Tips for handling columns in Microsoft Word
1. How to display the Ruler bar in Microsoft Word 2010?

You finished reading the article "**Instructions for deleting table paths in Word**" edited by the [TipsMake](#) team. We hope this article has provided you with many useful tech tips and tricks. You can search for similar articles on tips and guides. Thank you for reading and for following us regularly.