

# Instructions for customizing the power button in Windows 10

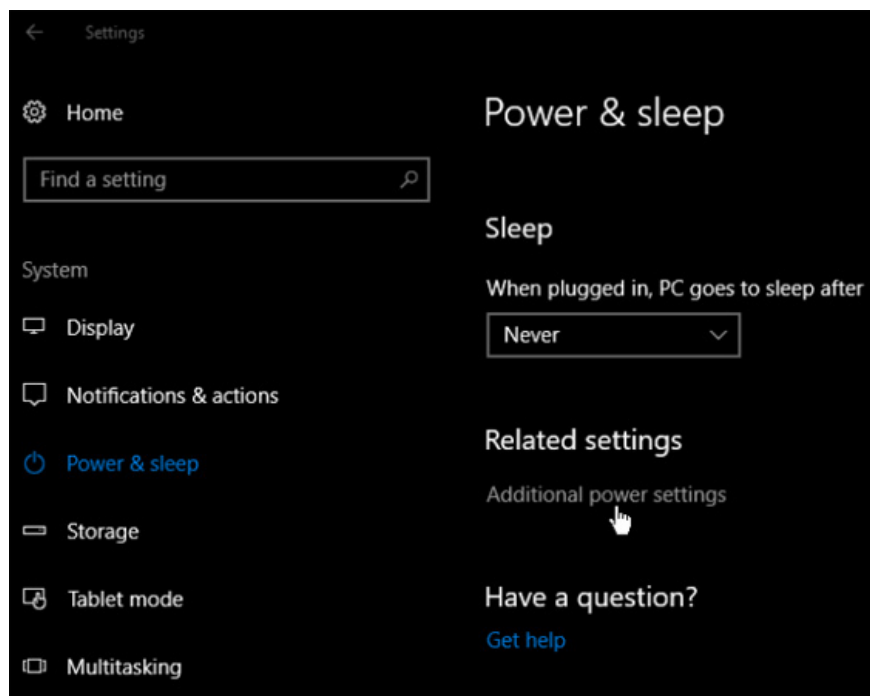
When turning off Windows 10 computer, some users prefer to use the physical power button instead of right-clicking on the Start button. So what to do to customize the power button on the computer? In this article, we will show you how to set the power button to Shutdown, Sleep, Hibernate or turn off the display every time you press.

When turning off Windows 10 computer, some users prefer to use the physical power button instead of right-clicking on the Start button. So what to do to customize the power button on the computer? In this article, we will show you how to set the power button to Shutdown, Sleep, Hibernate or turn off the display every time you press.

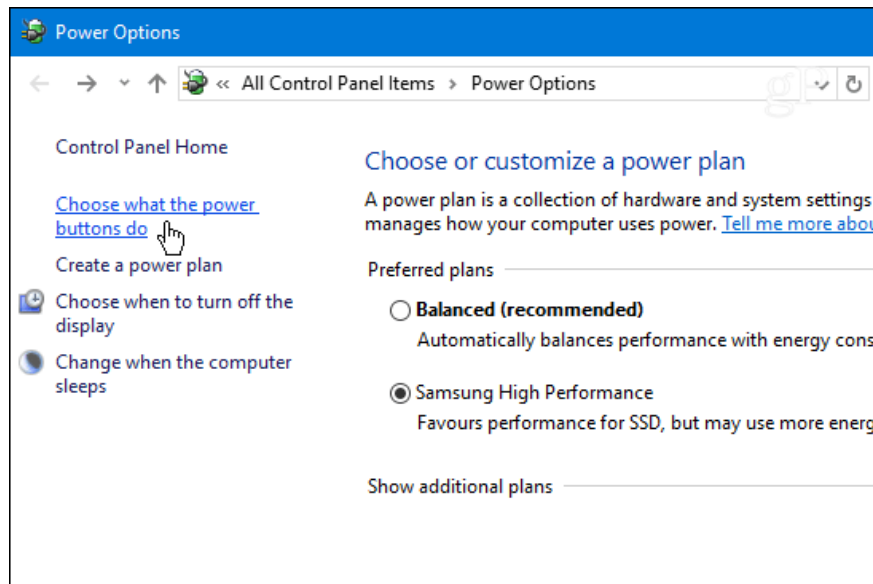
1. After 20 years, this is the first time CMD.EXE has been upgraded to a new Windows 10
2. Can I install Windows 10 from my Android phone, have you tried it?
3. Summary of several ways to open virtual keyboard on Windows XP / 7/8 / 8.1 / 10

## Change the function of the power button in Windows 10

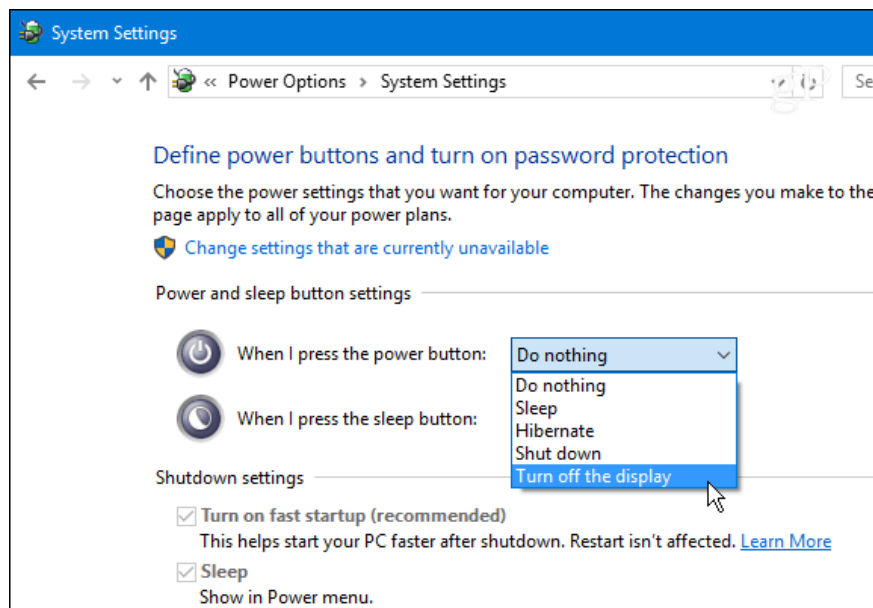
First, go to **Settings > System > Power & sleep** , scroll down and click to select **Additional power settings** .



This will open the familiar Control Panel window. From here, click the link **Choose what the power buttons do**



Then use the drop-down menu below **When I press the power button**, select the task you want the power button to perform when pressed. Usually, the options will include: Do nothing, Sleep, Shut down, or Turn off the display.



Note that different types of systems will have different options. For example, a laptop or Surface Pro will have additional options for the device when plugged in or running. Also, not every system supports Windows 10 Hibernation, so if you don't see this option the system doesn't support it.

One of Microsoft's biggest mistakes when releasing Windows 8 is removing the Start button. This makes it difficult for users to turn off the PC. Fortunately, however, the company brought the Start button back to Windows 10 and provided many ways to simply turn off the computer from within the operating system or use the power button on the device.

You finished reading the article "**Instructions for customizing the power button in Windows 10**" edited by the [TipsMake](#) team. We hope this article has provided you with many useful tech tips and tricks. You can search for similar articles on tips and guides. Thank you for reading and for following us regularly.

---