

Instructions for creating Windows installation USB on both GPT and MBR standards with Rufus

Rufus is known as the best software to support creating USB boot to install Windows today. Rufus can create Windows installation USB with two standards: GPT and MBR. Below is an article on how to create a bootable USB to install Windows with Rufus

Before going into details on how to **create USB to install Windows on two standards GPT and MBR with Rufus**. TipsMake would like to remind readers that this article will have some computer knowledge. For those who are new to computers, they may not understand the concepts of GPT and MBR, so we recommend that you immediately find out what is the difference between MBR Partition and GPT Partition before continuing to follow the steps to create a Windows installation USB above. two standards GPT and MBR with Rufus.

Instructions for creating Windows installation USB on both GPT and MBR standards with Rufus

1. What is Rufus?

Basically, Rufus is a tool that helps you quickly create Windows installation USBs according to many different standards, not by default like some Microsoft tools create. Rufus is also completely free so we do not need to worry about the features of this software.

In addition, this tool also helps you convert USB format from GPT to MBR and vice versa the fastest.

Latest Rufus download link:

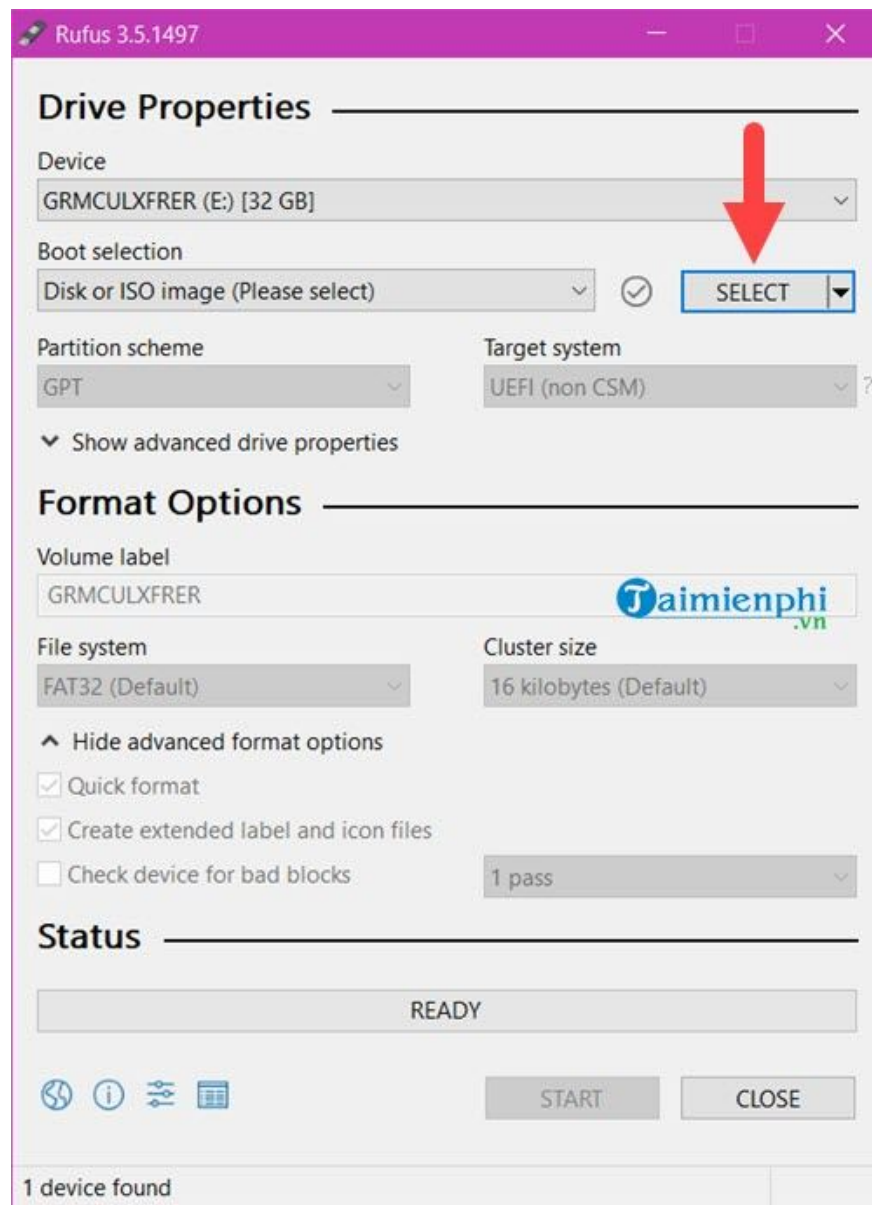


2. How to create a GPT standard Windows installation USB

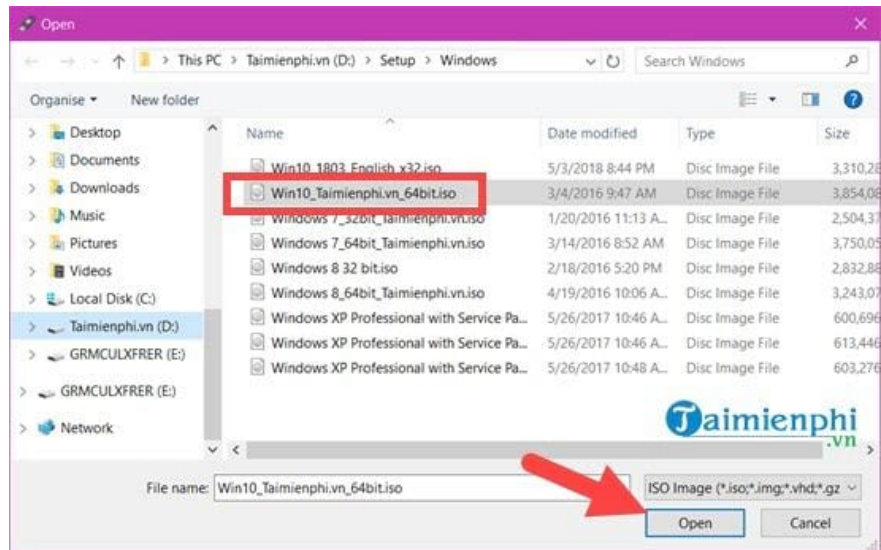
The GPT standard is one of the newest standards today and is used a lot to create USB to install Windows 10, so this guide will help you create a USB boot to install Windows 10 with Rufus.

Step 1: Open Rufus, set USB Boot creation parameters

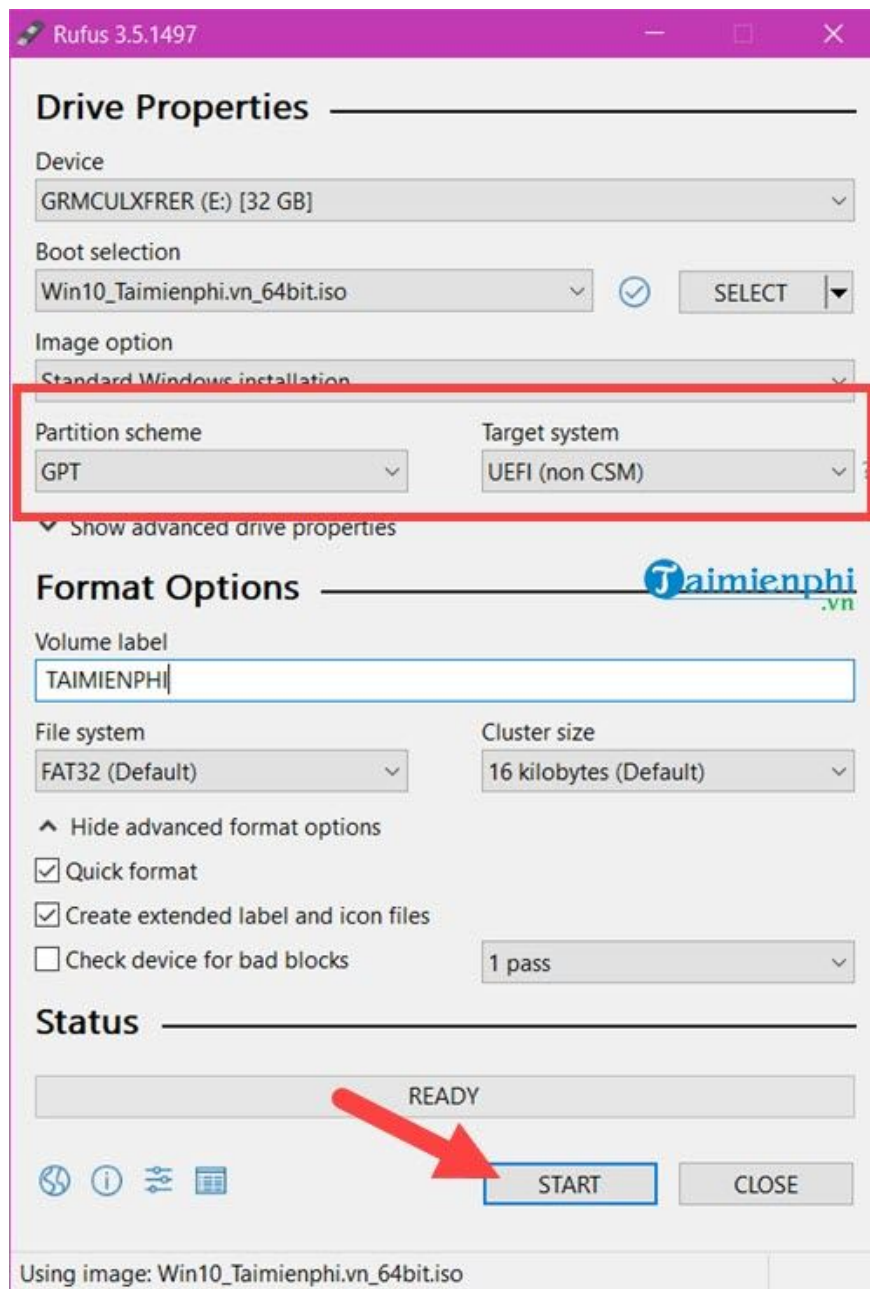
At the Rufus interface in the **Device** section , select your USB. In the **Boot Selection** section , select **Disk or ISO image** and then press Select to open the ISO file.



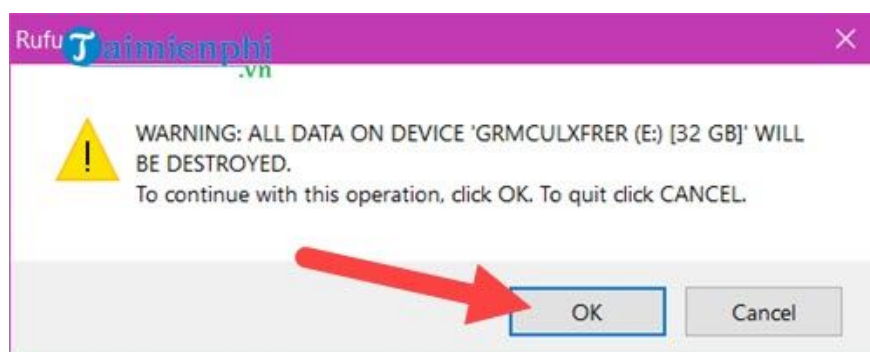
Depending on the Windows file you want to install, choose. In this article TipsMake uses Windows 10 as an example to install.



Step 2: Continue then in **Image option** select **Standard Windows installation** then in **Partition scheme** and **Target system** select **GPT** and **UEFI** respectively to install USB boot according to GPT standard and click **Start** .



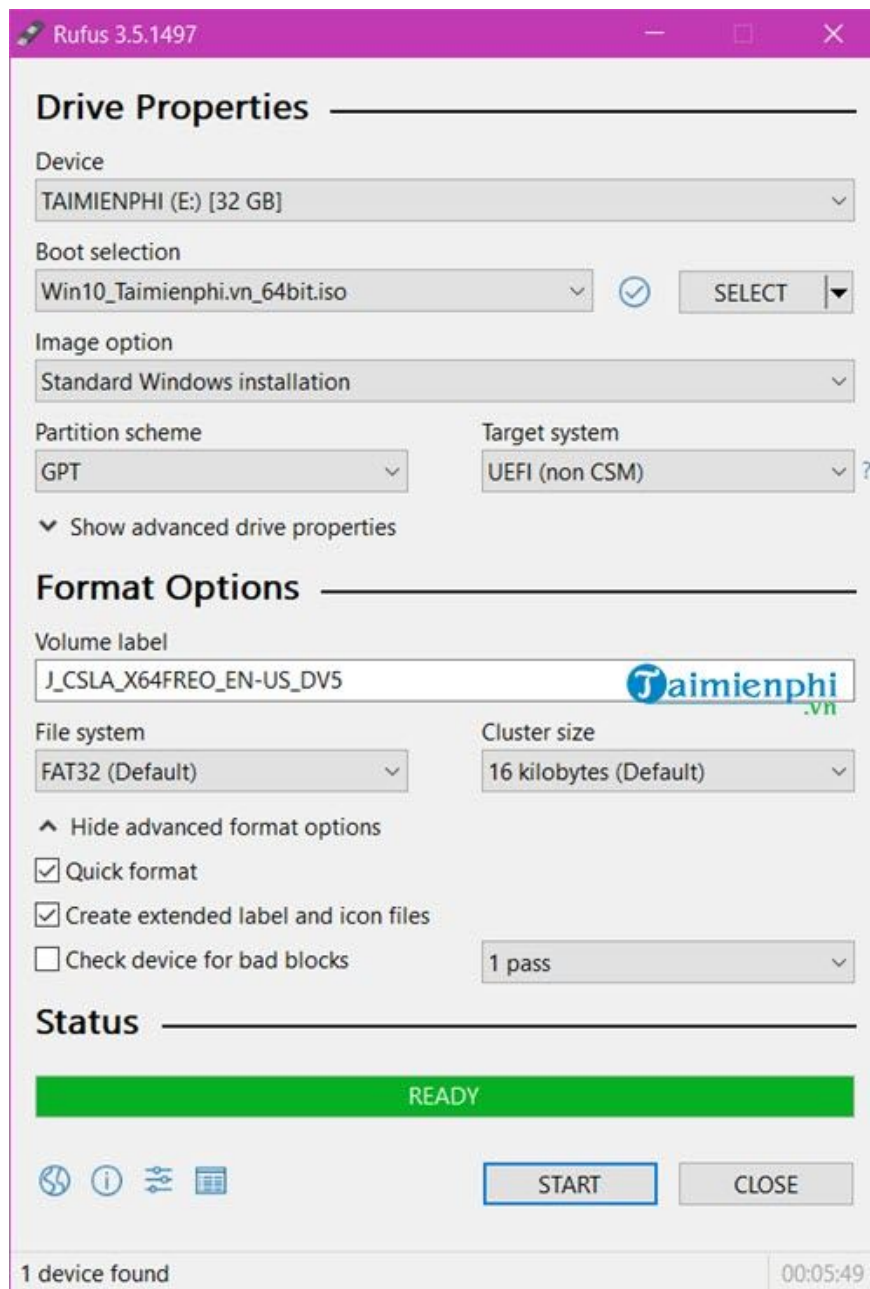
Step 3: Before creating a bootable USB to install Windows 10 with Rufus, the system will ask you in turn to format all data in the USB. Remember to clear all data before clicking OK.



The process of creating a USB boot to install Windows 10 with Rufus is fast or slow, completely depending on the speed of your USB as well as the ISO file version you use, but don't worry too much because it only takes you a few minutes. Stop.



Step 4: When the word **READY** appears, creating a USB boot to install Windows 10 with Rufus is complete.

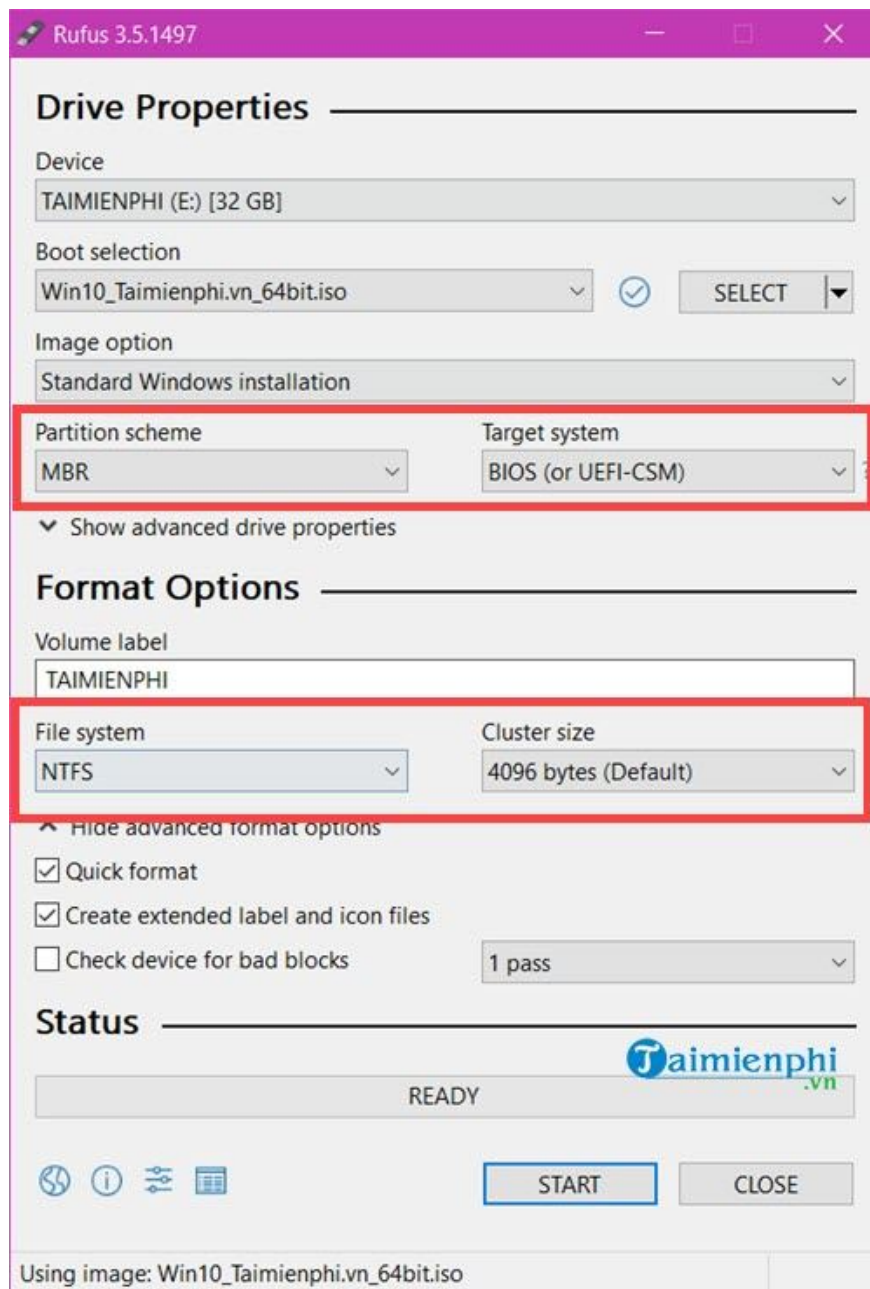


3. How to create a USB boot to install Windows standard MBR

Basically, the way to create a USB boot to install Windows standard GPT or MBR on Rufus is quite similar, please rely on the instructions above until **step 2** . Here we will choose the following:

- **Image option:** select **Standard Windows installation**
- **Partition scheme** : choose **MBR** instead of **GPT** .
- **Target System** : select **BIOS (Legacy)** and **UEFI** .
- **File System** : The default will be **NTFS** for you .

And continue to press **Start** and follow the steps above.



Then you proceed to create a USB boot to install Windows standard MBR with Rufus as usual. There is not much difference in how to create a USB boot to install Windows standard GPT and MBR with Rufus software. This is an advantage that few software can do like Rufus.

Above are instructions for creating Windows installation USBs on two standards GPT and MBR with Rufus. Using Rufus not only saves you time but also we have learned an extremely powerful tool to create installation USBs. Windows on your device.

To know what standard your Windows 10 is using, what should you do? How to check whether your Windows 10 computer is running UEFI or legacy will tell you a lot of useful information. Refer to how to check whether your Windows 10 computer is running UEFI or Legacy here.

You finished reading the article "**Instructions for creating Windows installation USB on both GPT and MBR standards with Rufus**" edited by the [TipsMake](#) team. We hope this article has provided you with many useful tech tips and tricks. You can search for similar articles on tips and guides. Thank you for reading and for following us regularly.
