

# Instructions for creating pin code in Windows 10

Setting pin for Windows 10 will shorten the password login operation that you usually do, but security is still guaranteed.

Usually to create a computer protection barrier, we still think about how to set a password. However there is a much simpler way that is to use that battery on Windows 10 to log on the computer. When installing the pin, you will access the operating system faster, while the computer is still secure.

1. Download Windows 10 operating system

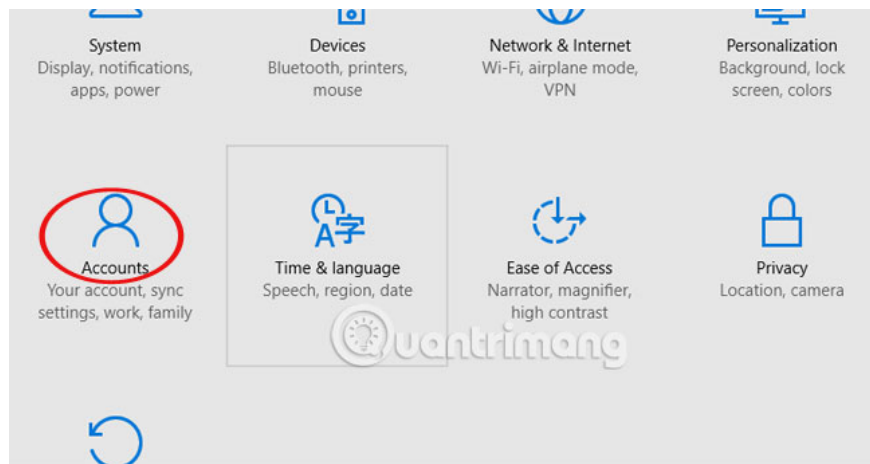
## Step 1:

Click your mouse on the Windows icon at the bottom, select **Settings** .



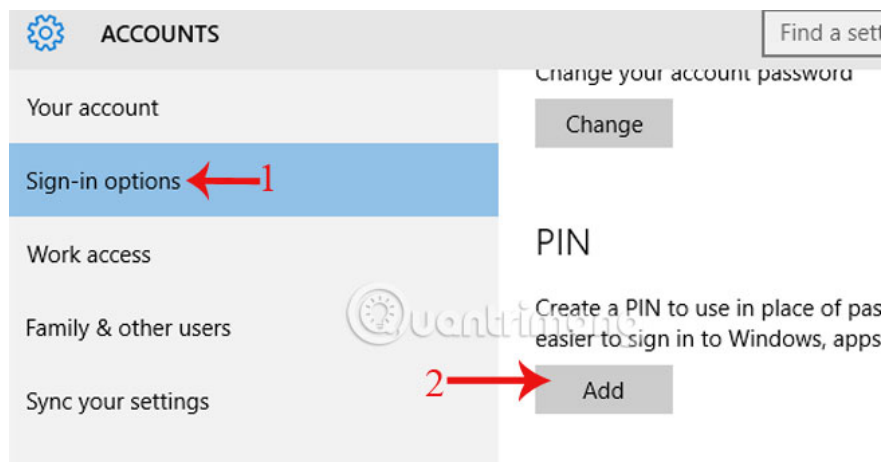
## Step 2:

Here, click on **Accounts**.



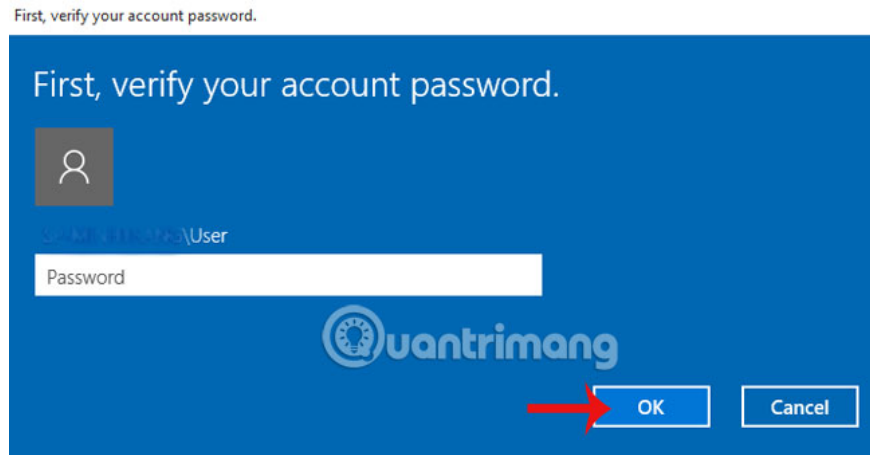
### Step 3:

Access **Sign-in options** and in the PIN section, select **Add** to install the pin code.



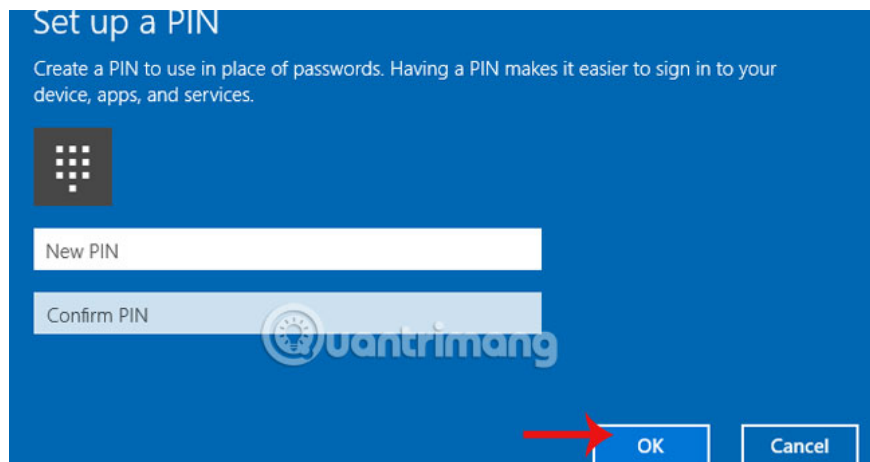
### Step 4:

The window that appears requires you to enter the login account into the system. Click **Ok**.



## Step 5:

The **Set up a PIN** setting table appears. Enter your PIN and click **OK** when done. Notice that the PIN code needs at least 4 characters from 0-9, does not contain letters and special characters. The length of pin code is not limited.



## Refer to the following article:

1. Tips or help you master the Start Menu on Windows 10
1. How to open the virtual keyboard in Windows 10
1. Ways to turn off your computer on Windows 10

## I wish you all success!

You finished reading the article "**Instructions for creating pin code in Windows 10**" edited by the [TipsMake](#) team. We hope this article has provided you with many useful tech tips and tricks. You can search for similar articles on tips and guides. Thank you for reading and for following us regularly.