

Instructions for configuring Bullet M2HP Wifi router

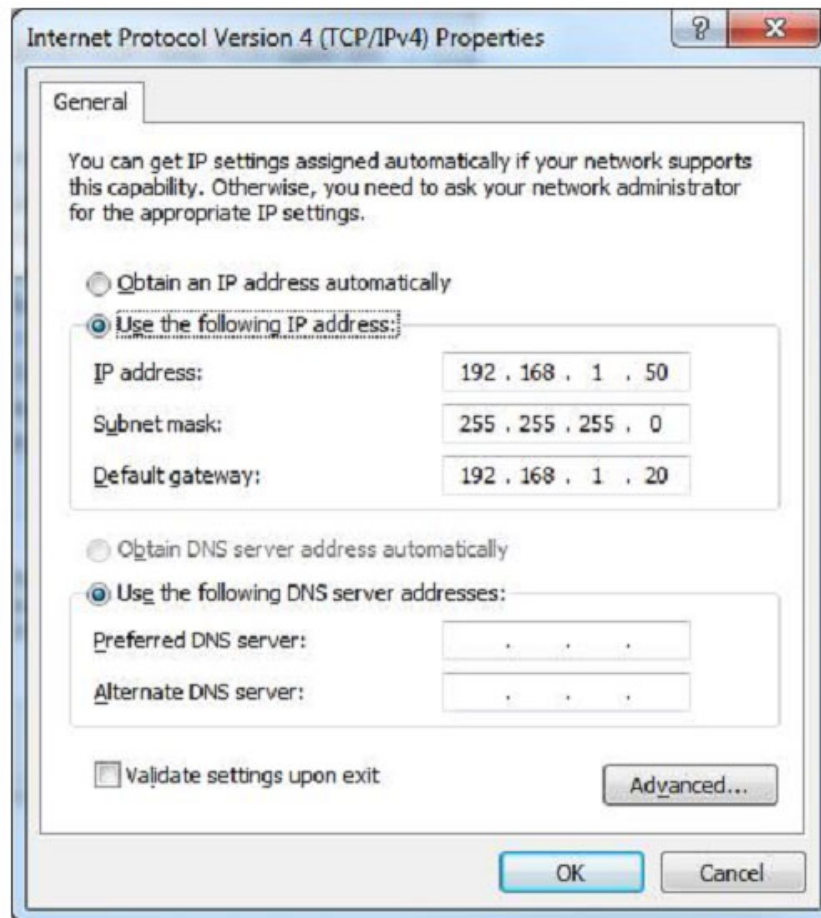
TipsMake.com please guide you how to install Wifi M2HP Wifi Router. Things to know about the device before configuring IP Lan default: 192.168.1.20 Username: ubnt Password: ubnt

TipsMake.com please guide you how to install Wifi M2HP Wifi Router. Things to know about the device before configuring IP Lan default: 192.168.1.20 Username: ubnt Password: ubnt

How to plug in the device : On the PoE Adapter: PoE port plugs into Bullet M2HP, the LAN port plugs into the network card of the computer or Router (*Modem or Switch*).

Step 1 :

Set static IP for network card



Step 2 :

Open the browser and go to **192.168.1.20** with username and password as ubnt

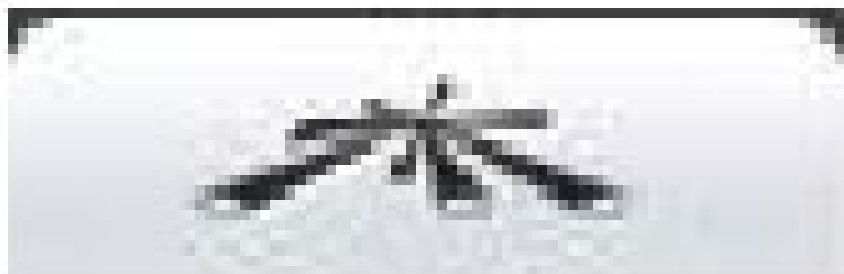
Step 3 :

Go to the Wireless card

1. **Wireless** mode item select **Access Point**
2. **SSID** entry type the wifi name to set
3. **Channel** width section selected: **20 Mhz**
4. **Security** section select: **WPA2-AES** (*Other modes can be selected*)
5. **WPA Preshared Key** : type password wifi to set. Pass has a minimum length of **8 characters**
6. After completing the above items, click **Change** .

The screenshot shows the 'Basic Wireless Settings' and 'Wireless Security' sections of the Bullet M2 AirOS web interface. The 'Basic Wireless Settings' section includes fields for Wireless Mode (Access Point), SSID (Tên wifi), Country Code (United States), IEEE 802.11 Mode (B/G/N mixed), Channel Width (20 MHz), Channel Shifting (Disabled), Frequency (Auto), Extension Channel (None), Frequency List (Enabled), Auto Adjust to EIRP Limit (unchecked), Antenna Gain (0 dBi), Cable Loss (0 dB), Output Power (28 dBm), and Max TX Rate (MCS 7 - 65). The 'Wireless Security' section includes Security (WPA2-AES), WPA Authentication (PSK), WPA Preshared Key (password), and MAC ACL (Enabled). A 'Change' button is located at the bottom right of the settings area.

Step 4 : Go to the card with the icon



. Then uncheck the **Enable AirMax** section then click **Change** and **Apply** to complete the installation process.

Some points to note when installing

1. The antenna must be inserted into the wifi transmitter before plugging in the power for the wifi transmitter
2. When installing outdoor connection points between the wifi transmitter - spread lightning protection (*if any*) - the antenna should be tightly sealed and tight with insulating tape.
3. In the **Bullet Box M2HP**, plastic buttons are available: this button is used to insert the network cable and the bottom cover to prevent insects from entering the device.
4. For **antennas 8-10-12-15-24dBi** must be installed tightly into iron or wall columns, must be mounted vertically to avoid strong shaking when strong winds can break the antenna.
5. Surge protection (*if any*) must be connected by grounding wire or lightning escape device. This lightning protection device only has the effect of escaping the lightning spread but cannot resist strong lightning or direct hits.

You finished reading the article "**Instructions for configuring Bullet M2HP Wifi router**" edited by the [TipsMake](#) team. We hope this article has provided you with many useful tech tips and tricks. You can search for similar articles on tips and guides. Thank you for reading and for following us regularly.