

Instructions for checking laptop battery health using BatteryInfoView

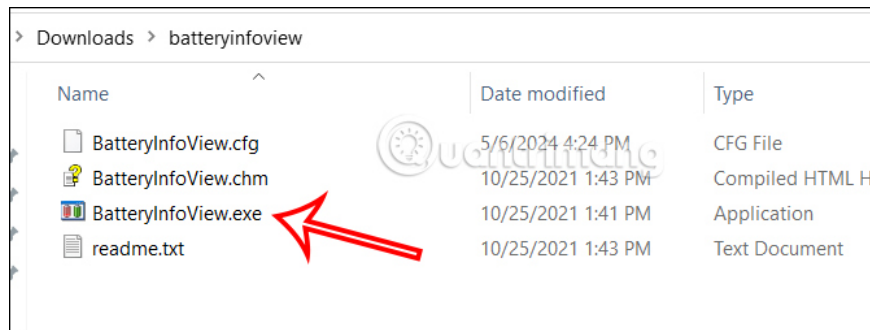
BatteryInfoView software will help you check the current laptop battery status, the condition of the laptop's battery,...

BatteryInfoView software will help you check the current laptop battery status, the condition of the laptop's battery, etc. The tool analyzes basic information about the laptop battery and details about the power status, percentage capacity, speed, of the battery. Users also have the option to export laptop battery statistics as text files, CSV files or HTML documents. Below are instructions for using BatteryInfoView to check laptop battery health.

How to use BatteryInfoView to check laptop battery health

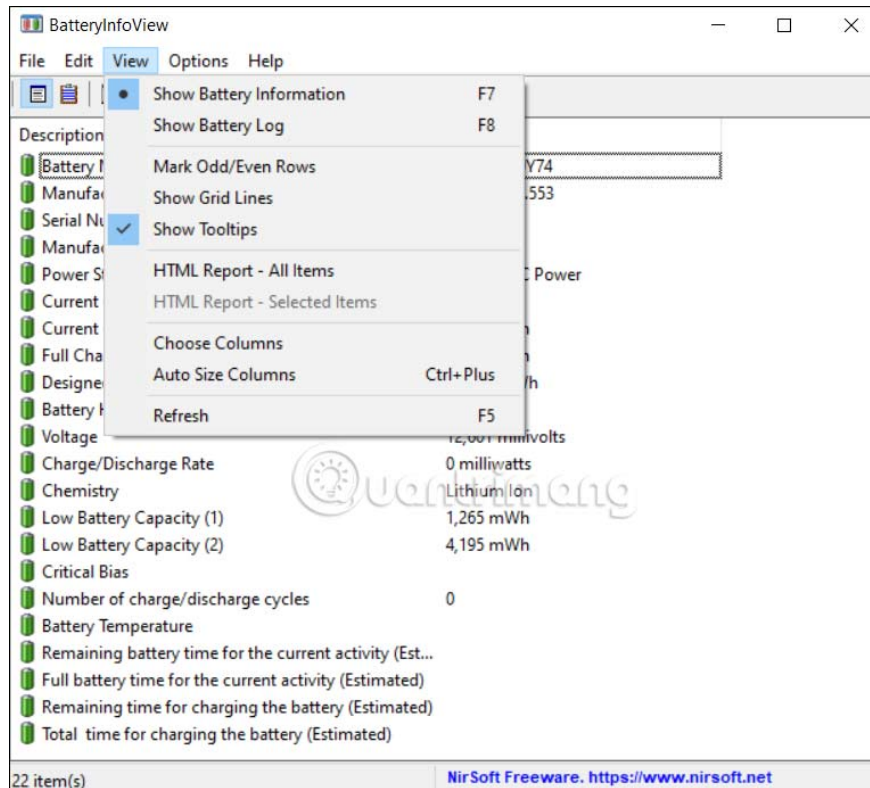
Step 1:

First, download the BatteryInfoView software from the link below, then unzip and install on your computer as usual.

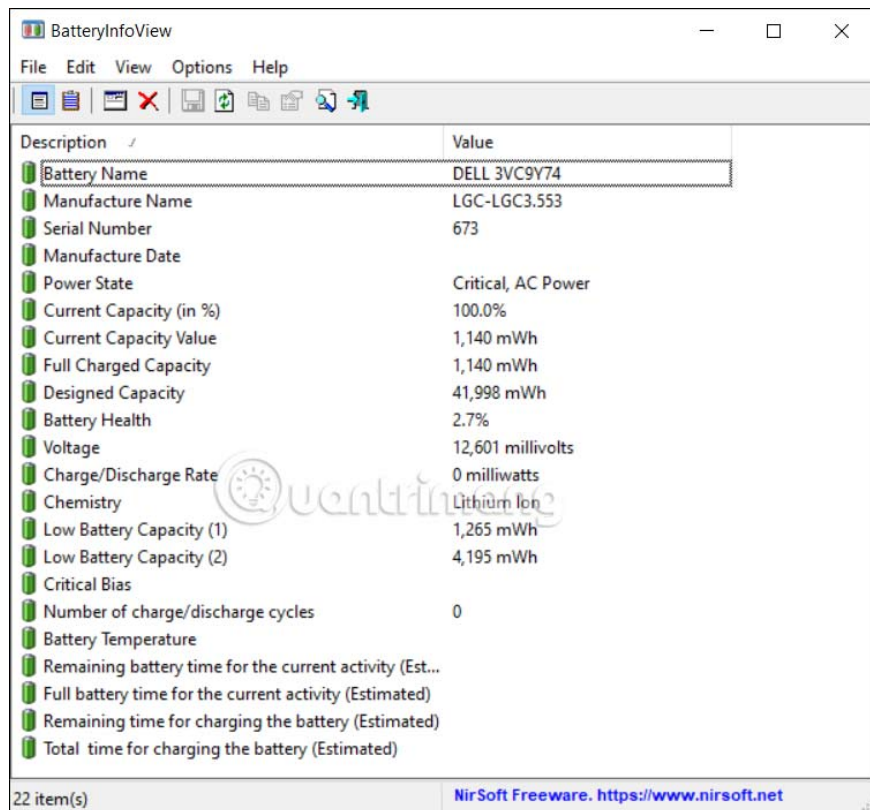


Step 2:

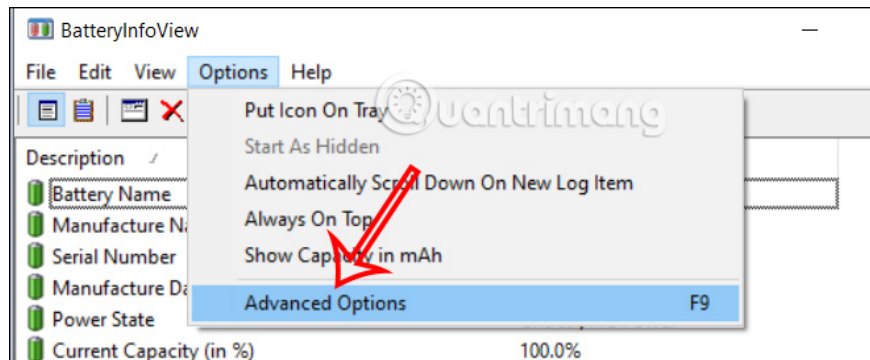
Below is the main interface of BatteryInfoView software. Click **View** then select **Battery Information** to choose to view battery information.



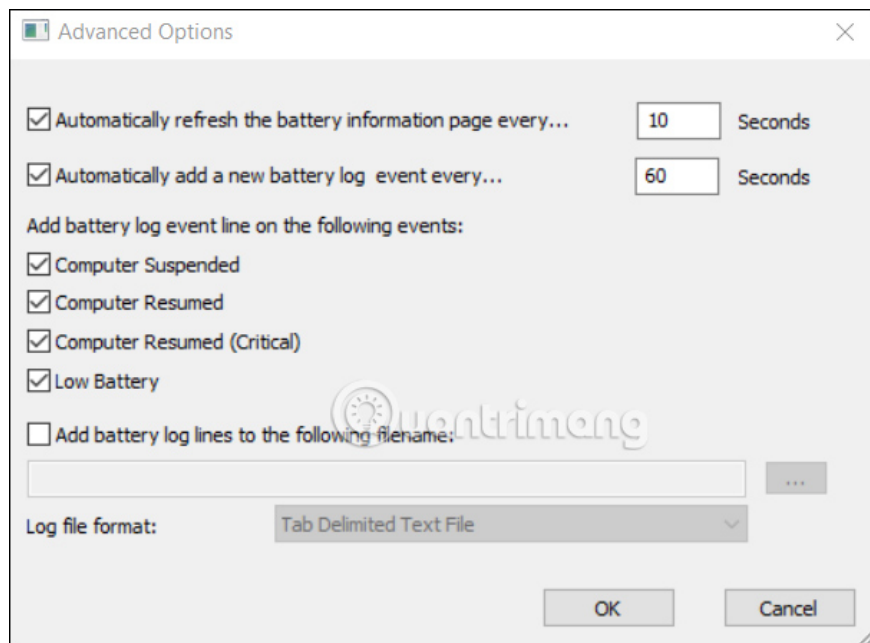
Now the interface displays the status and general information about your battery. Information is **updated** every 10 seconds by software default.



You can **change the speed at which this information updates** by **clicking Options** and then selecting **Advanced Options** .

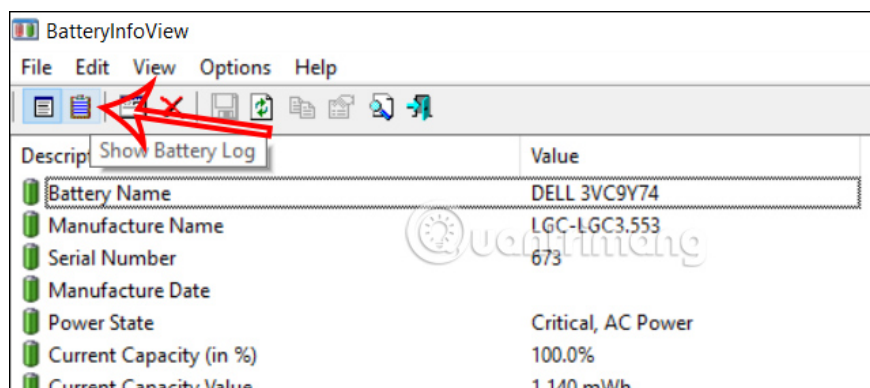


At this interface you can change the default time to notify information about battery status.

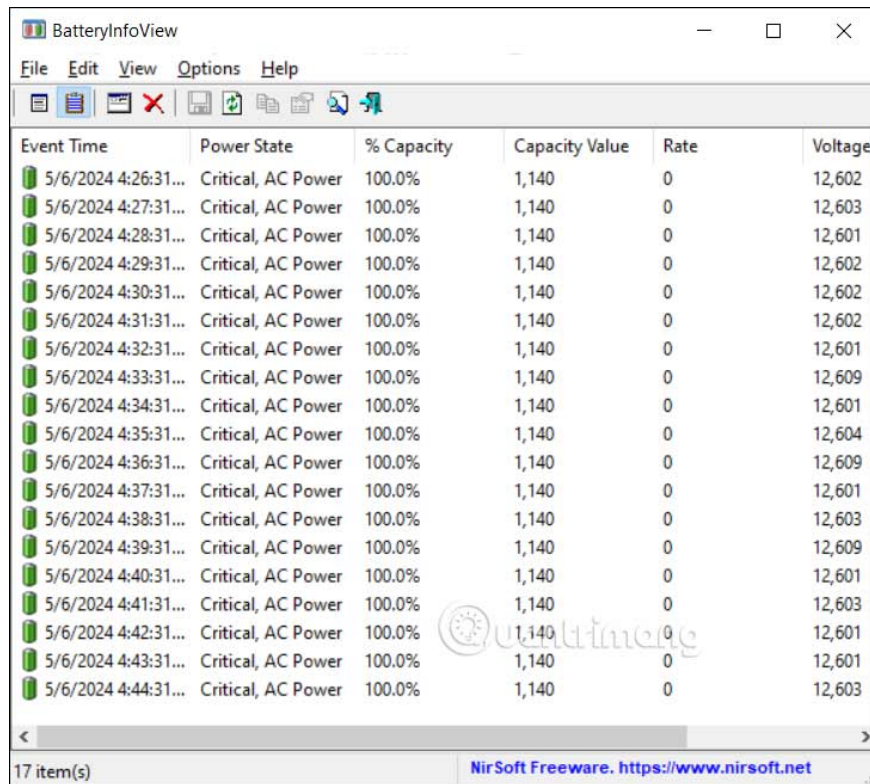


Step 3:

Continue clicking **the Show Battery Log icon** to view the laptop battery status log.



In this interface you will see the battery status log such as battery status, battery capacity %, etc. and the information is changed and updated every 30 seconds.

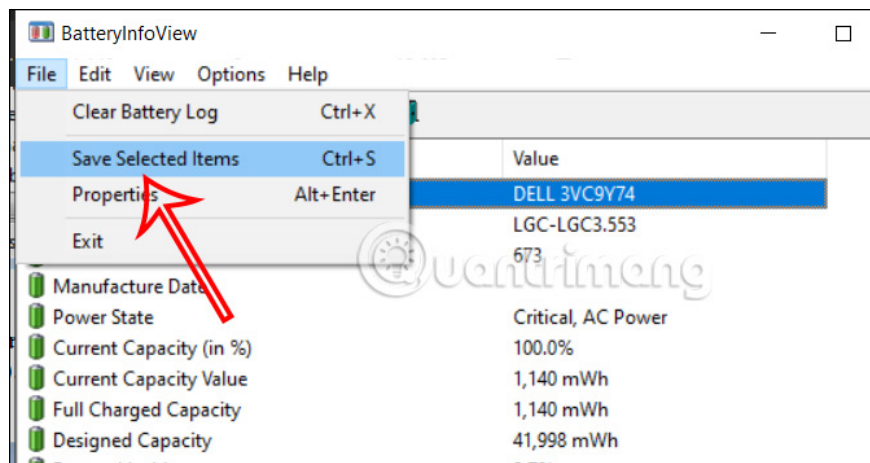


The screenshot shows the BatteryInfoView application window. The main area contains a table with the following columns: Event Time, Power State, % Capacity, Capacity Value, Rate, and Voltage. The table lists 17 items, all with a power state of 'Critical, AC Power' and 100.0% capacity. The voltage fluctuates slightly around 12,600. The status bar at the bottom indicates '17 item(s)' and provides the website 'NirSoft Freeware. https://www.nirsoft.net'.

Event Time	Power State	% Capacity	Capacity Value	Rate	Voltage
5/6/2024 4:26:31...	Critical, AC Power	100.0%	1,140	0	12,602
5/6/2024 4:27:31...	Critical, AC Power	100.0%	1,140	0	12,603
5/6/2024 4:28:31...	Critical, AC Power	100.0%	1,140	0	12,601
5/6/2024 4:29:31...	Critical, AC Power	100.0%	1,140	0	12,602
5/6/2024 4:30:31...	Critical, AC Power	100.0%	1,140	0	12,602
5/6/2024 4:31:31...	Critical, AC Power	100.0%	1,140	0	12,601
5/6/2024 4:32:31...	Critical, AC Power	100.0%	1,140	0	12,609
5/6/2024 4:33:31...	Critical, AC Power	100.0%	1,140	0	12,601
5/6/2024 4:34:31...	Critical, AC Power	100.0%	1,140	0	12,604
5/6/2024 4:35:31...	Critical, AC Power	100.0%	1,140	0	12,609
5/6/2024 4:36:31...	Critical, AC Power	100.0%	1,140	0	12,601
5/6/2024 4:37:31...	Critical, AC Power	100.0%	1,140	0	12,603
5/6/2024 4:38:31...	Critical, AC Power	100.0%	1,140	0	12,609
5/6/2024 4:39:31...	Critical, AC Power	100.0%	1,140	0	12,601
5/6/2024 4:40:31...	Critical, AC Power	100.0%	1,140	0	12,603
5/6/2024 4:41:31...	Critical, AC Power	100.0%	1,140	0	12,601
5/6/2024 4:42:31...	Critical, AC Power	100.0%	1,140	0	12,601
5/6/2024 4:43:31...	Critical, AC Power	100.0%	1,140	0	12,603
5/6/2024 4:44:31...	Critical, AC Power	100.0%	1,140	0	12,601

Step 4:

To export battery information into a text file, **click on the information you need to save**, then select **File**, select **Save Selected Items**.



You finished reading the article "**Instructions for checking laptop battery health using BatteryInfoView**" edited by the [TipsMake](#) team. We hope this article has provided you with many useful tech tips and tricks. You can search for similar articles on tips and guides. Thank you for reading and for following us regularly.