

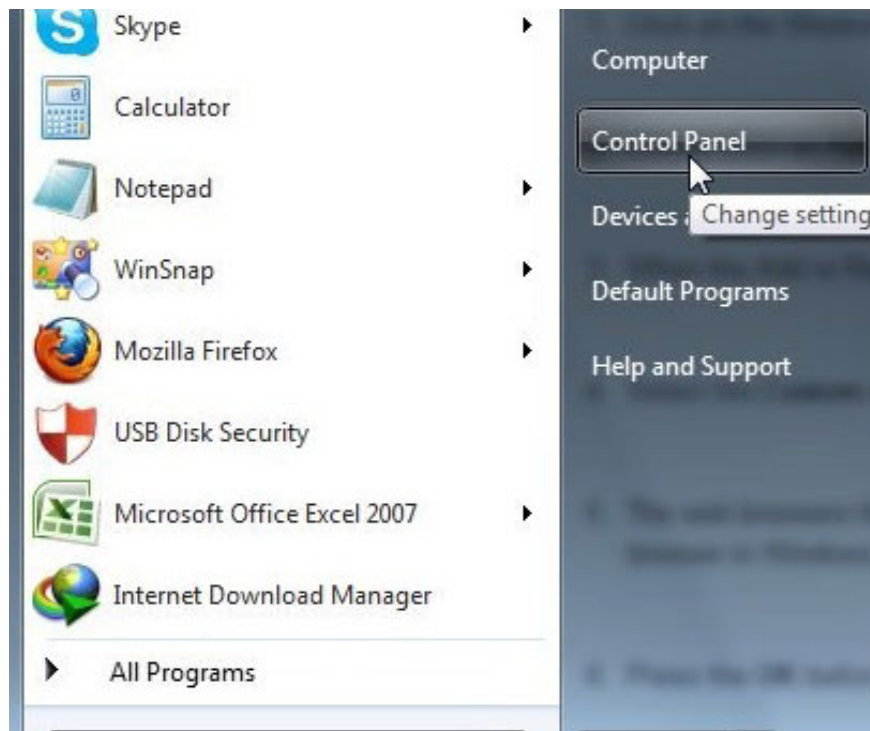
Instructions for changing the default web browser in Windows 7

Although you can freely use any web browser you like, the default browser is launched by Windows when clicking on links in email or Office documents. The article will quickly guide users how to change the default web browser in Windows.

Although you can freely use any web browser you like, the default browser is launched by Windows when clicking on links in email or Office documents. The article will quickly guide users how to change the default web browser in Windows.

Change the default browser in Windows from Control Panel

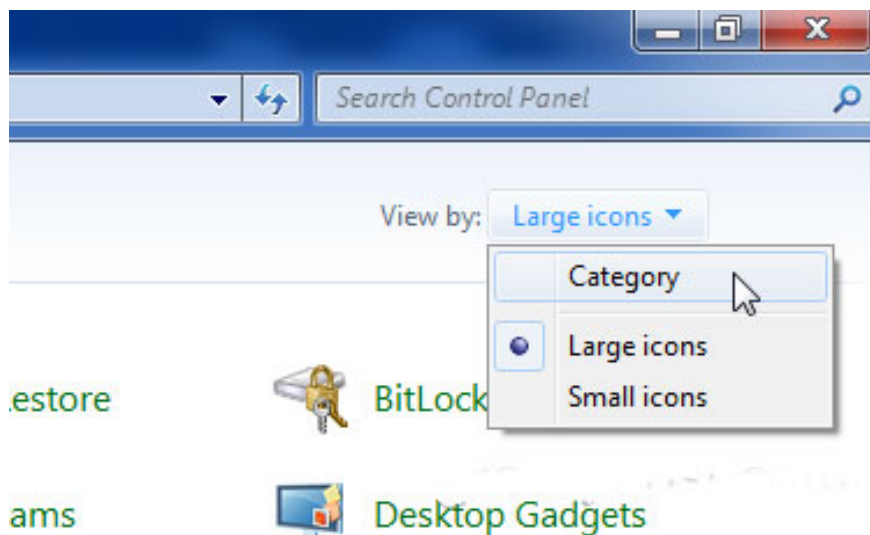
Click **Start** and select **Control Panel** .



Choose **Programs** .



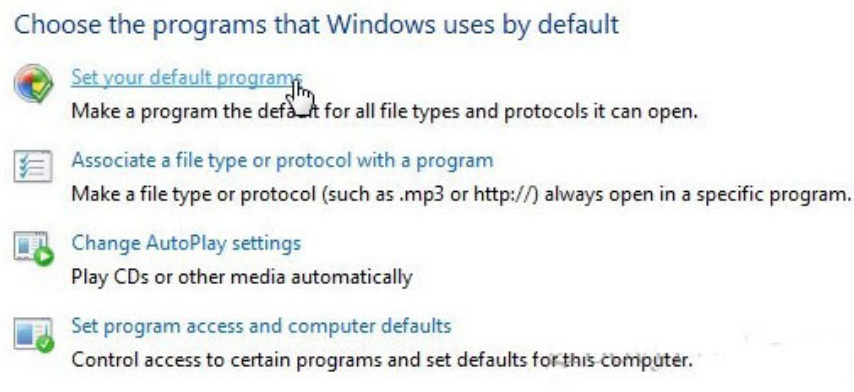
If you don't see the Programs option, change the Control Panel's View Style. Click on the **View** option in the upper right corner of the control panel and select **Category**.



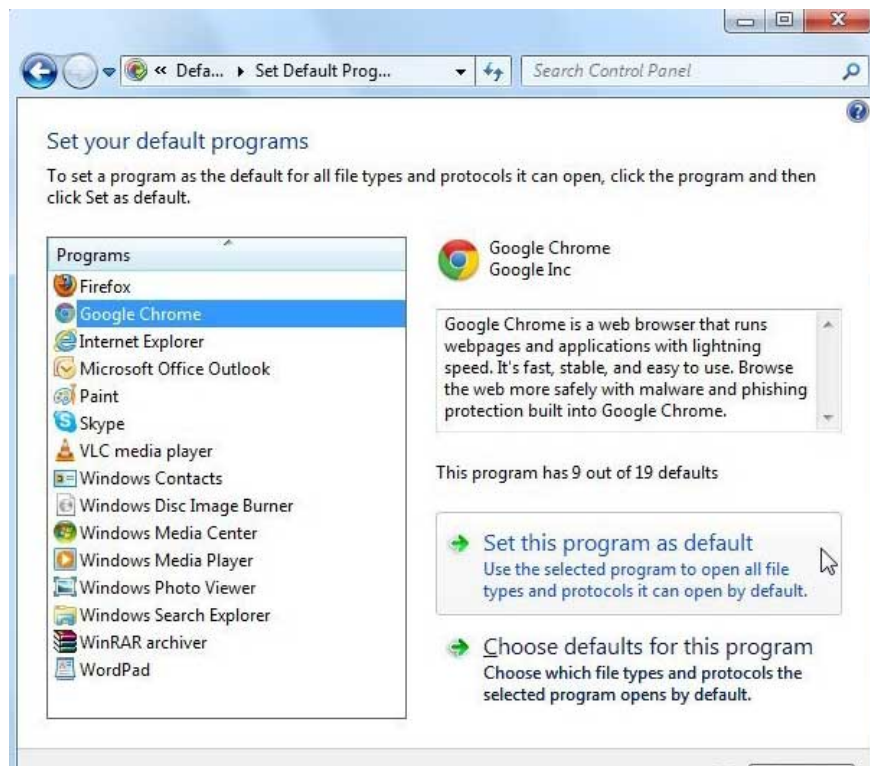
Now, click **Default Programs**.



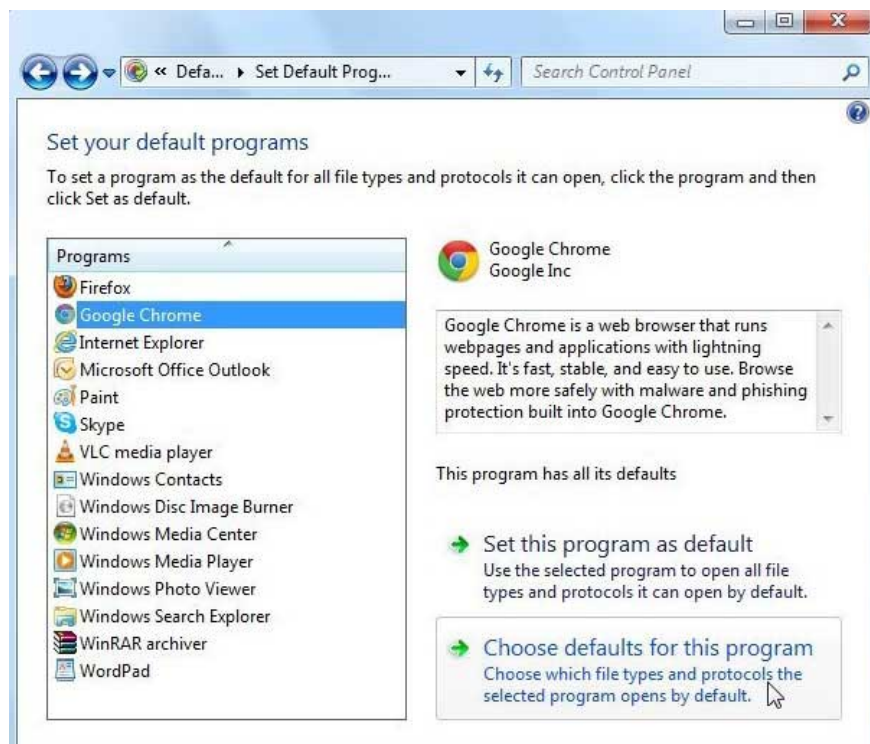
Click **Set Your Default Programs** if the user wants to change the default programs that Windows will use to open the file.



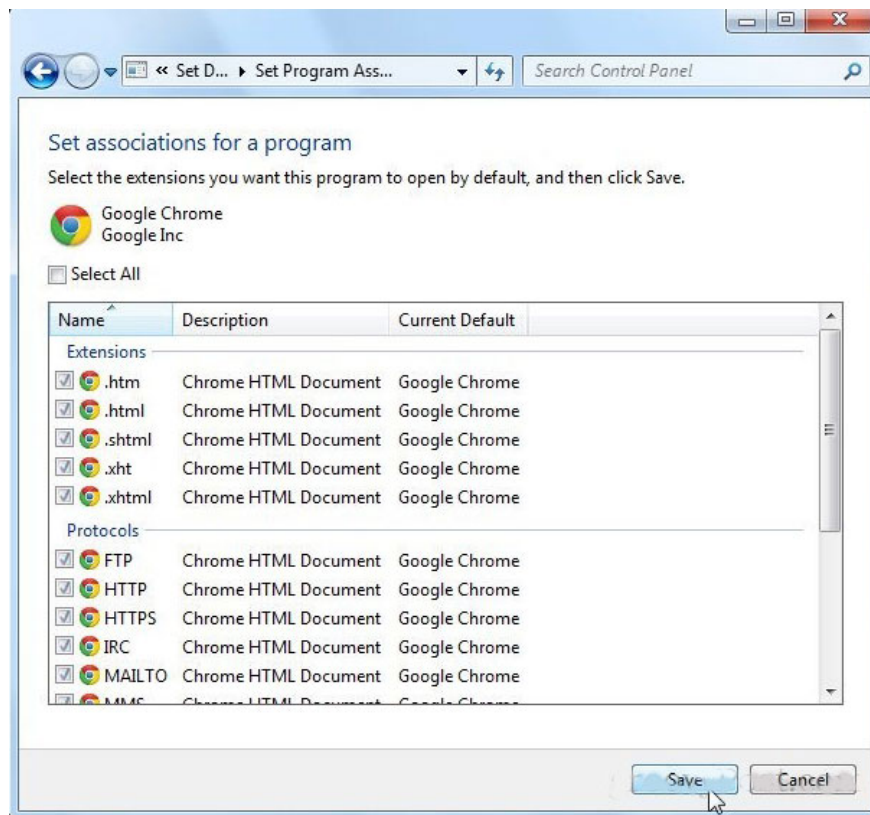
The list of installed programs appears. Select the browser you want to use as the default and click **Set this Program As Default**.



Click **Choose Default for this Program** .



Windows will display a list of all supported file types. Select the type of file the user wants to open with the specified browser and click the Save button.

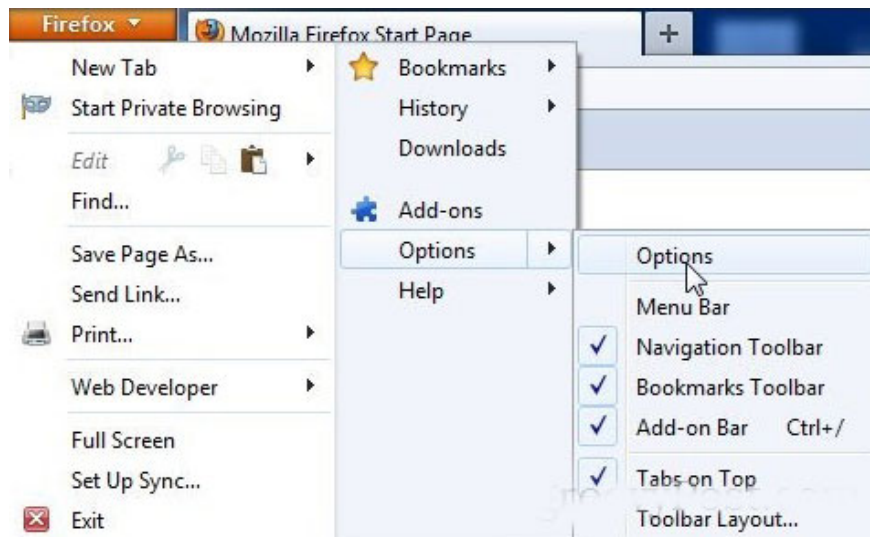


Set the default browser within the application

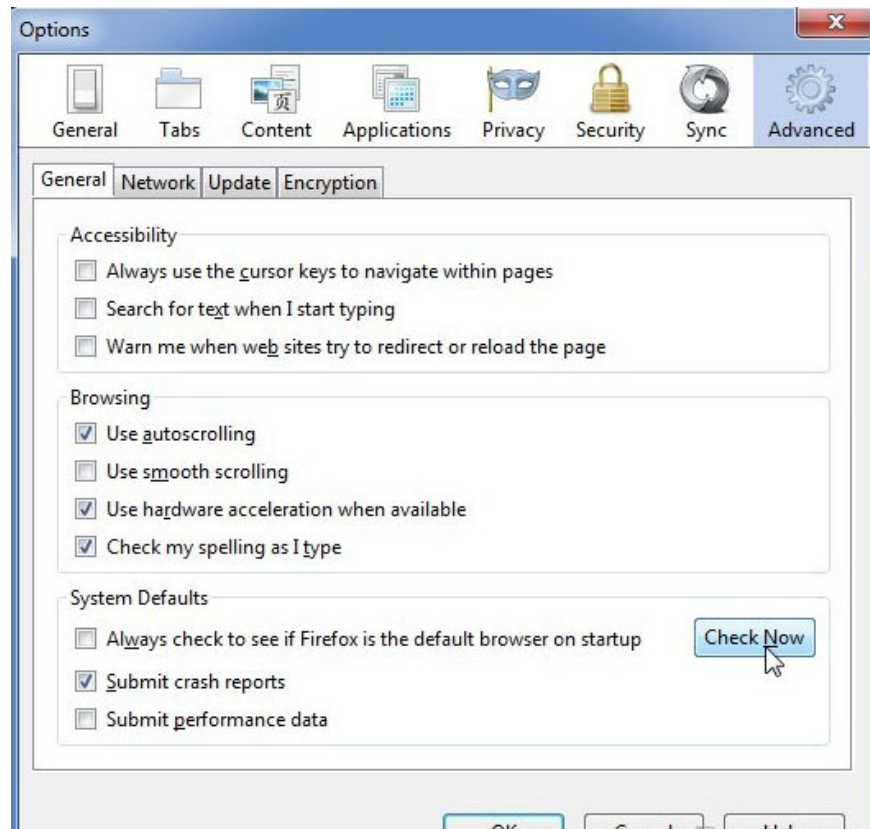
As mentioned, we will put the default browser inside the application. Below are a few examples.

Mozilla Firefox

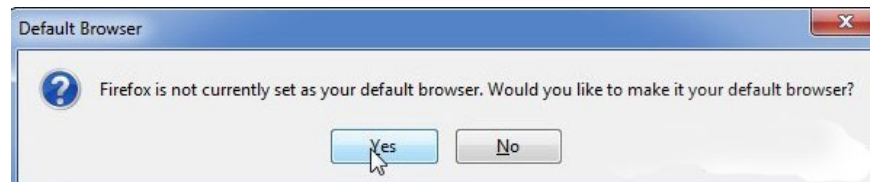
Go to Options by clicking on the orange **Firefox** button and selecting **Options**.



Click on the **Advanced** tab. Under System Defaults, click **Check Now** to check the default browser.

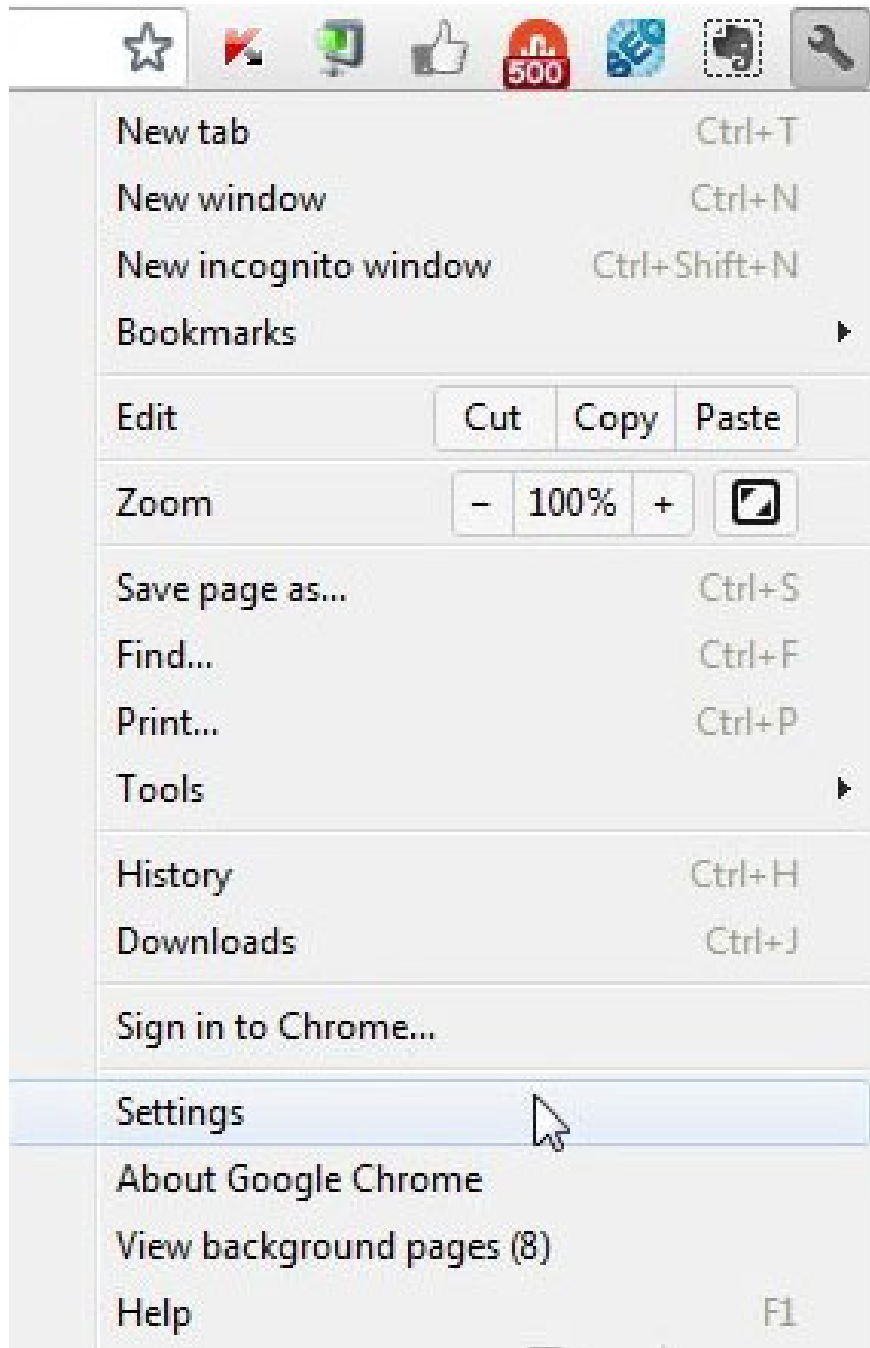


If Firefox is not the default browser, a dialog box will appear asking if the user wants to set the program as the default browser. Click **Yes** to agree.



Google Chrome

To turn Google Chrome into the default browser, click the wrench icon and select **Settings** .



In the **Default Browser** section, users can set Google Chrome as the default browser.

Users

You are currently the only Google Chrome user.

Add new user

Delete this user

Import bookmarks and settings...

Default browser

The default browser is currently Google Chrome.

[Show advanced settings...](#)

You finished reading the article "**Instructions for changing the default web browser in Windows 7**" edited by the [TipsMake](#) team. We hope this article has provided you with many useful tech tips and tricks. You can search for similar articles on tips and guides. Thank you for reading and for following us regularly.
