

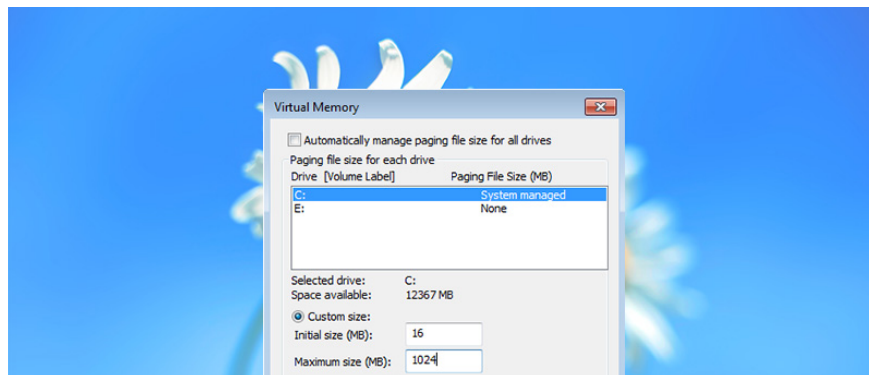
Instructions for changing Pagefile.sys size and location on Windows

Although Pagefile.sys takes up a lot of space in your drive, the computer uses it to maintain the storage of important data in the computer instead of deleting these data when RAM is overloaded.

Although Pagefile.sys takes up a lot of space in your drive, the computer uses it to maintain the storage of important data in the computer instead of deleting these data when RAM is overloaded.

To free up space and drive space, you can change Pagefile.sys size and location on your computer.

1. What is Pagefile.sys?



Windows uses a file called Pagefile.sys as a virtual memory because the RAM in the machine can only record a certain amount.

Pagefile.sys is located in the hard drive or SSD (C: pagefile.sys) to support the limited write ability of RAM in the computer when needed.

Your computer will prioritize the use of RAM to store data because its accessibility is faster than hard drive. However, when RAM is full or overloaded, Windows will automatically transfer data from RAM to Pagefile.sys in the hard drive.

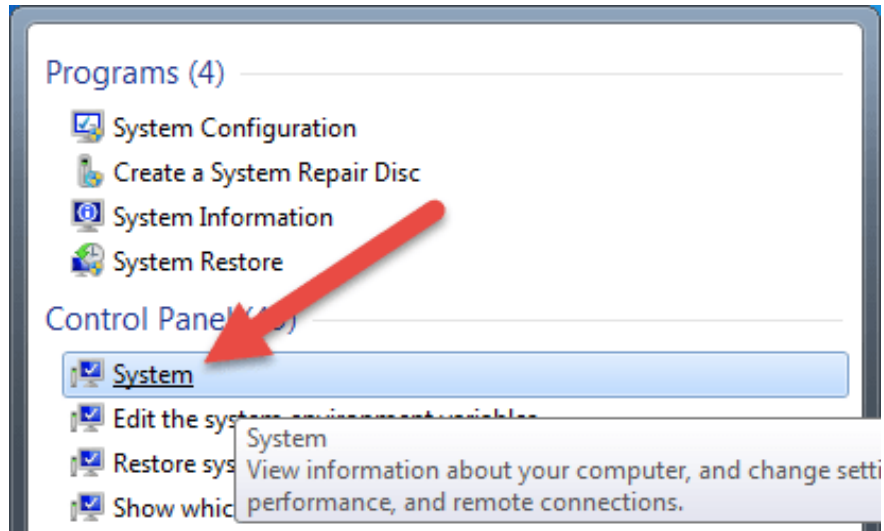
Although Pagefile.sys takes up a lot of space in your drive, the computer uses it to maintain the storage of important data in the computer instead of deleting these data when RAM is overloaded.

2. Resize Pagefile.sys

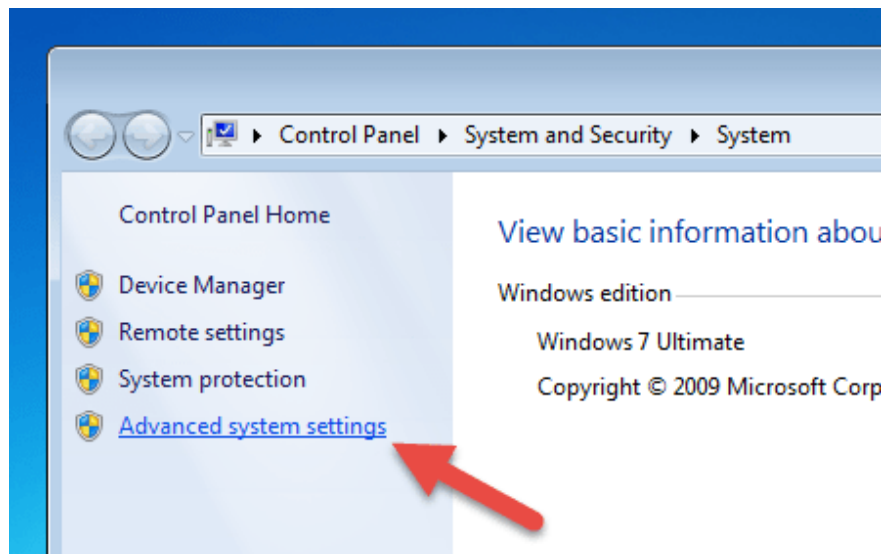
1. To change Pagefile.sys size, you must access the **Windows Advanced System Settings** .

To access Windows Advanced System Settings, on the Start Menu, type the System keyword in the Search frame, then click the **System** option displayed in Control Panel.

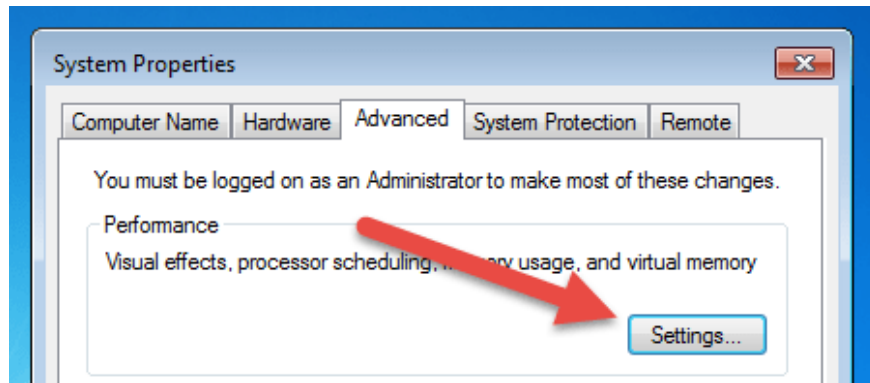
If you're using Windows 8, press **Win + X** and then select System on the Power User Menu.



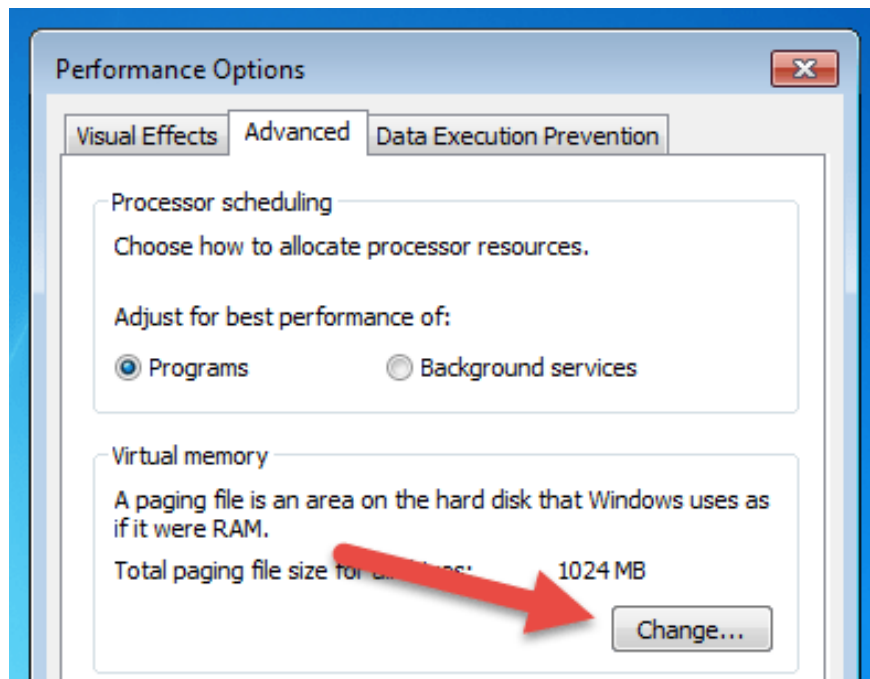
2. On the System interface, click to select **Advanced System Settings** to open the Advanced System Properties window.



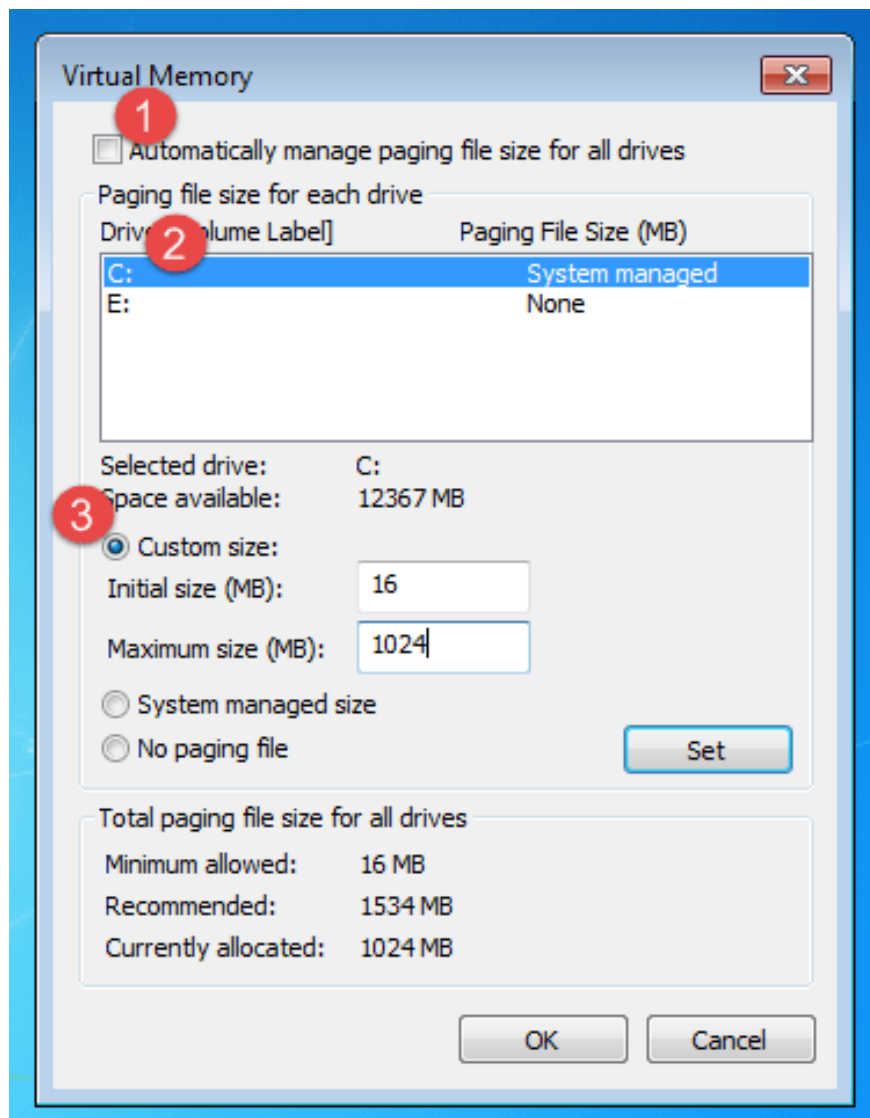
3. Next click **Settings** under the Performance section to open the Performance Options window.



4. Click the Advanced tab and select the **Change** button to open the Virtual Memory window.



5. In the Virtual Memory window, uncheck the **Automatically manage paging file size for all drives** option, select the **Custom Size** option .



At Custom size option, adjust the size you want to change in **Initial size** and **Maximum size** and then click **OK** to save the changes.

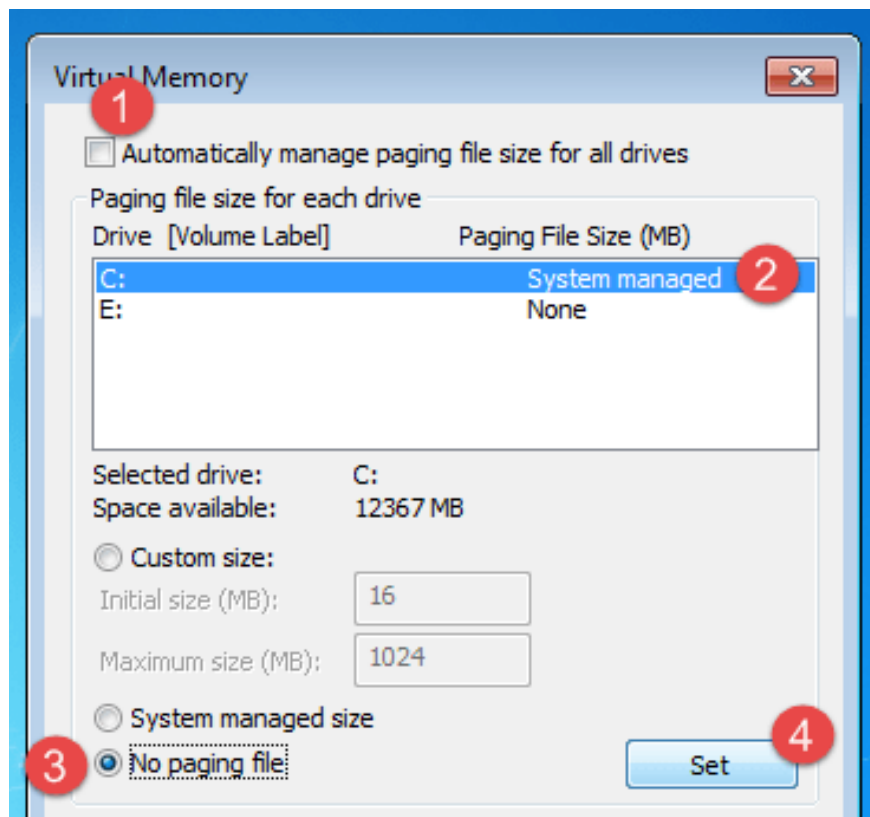
Finally close all windows and then restart your system to apply changes.

3. Change Pagefile.sys location

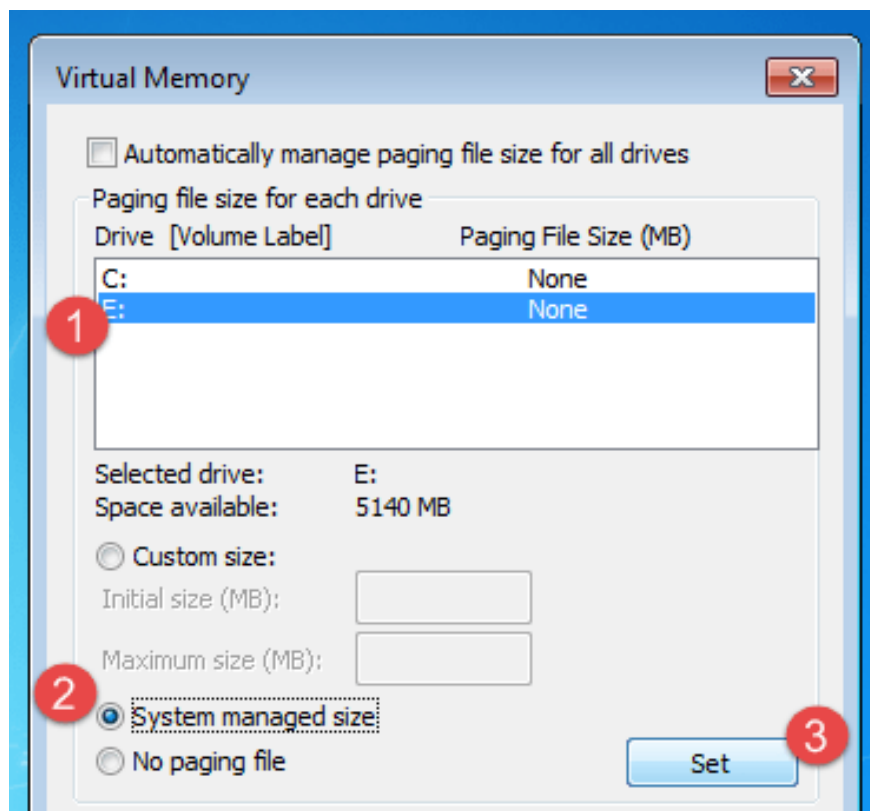
To change the Pagefile.sys location, first take the first four steps as shown in the Pagefile.sys resize.

In the Virtual Memory window, uncheck **Automatically manage paging file size for all drives**.

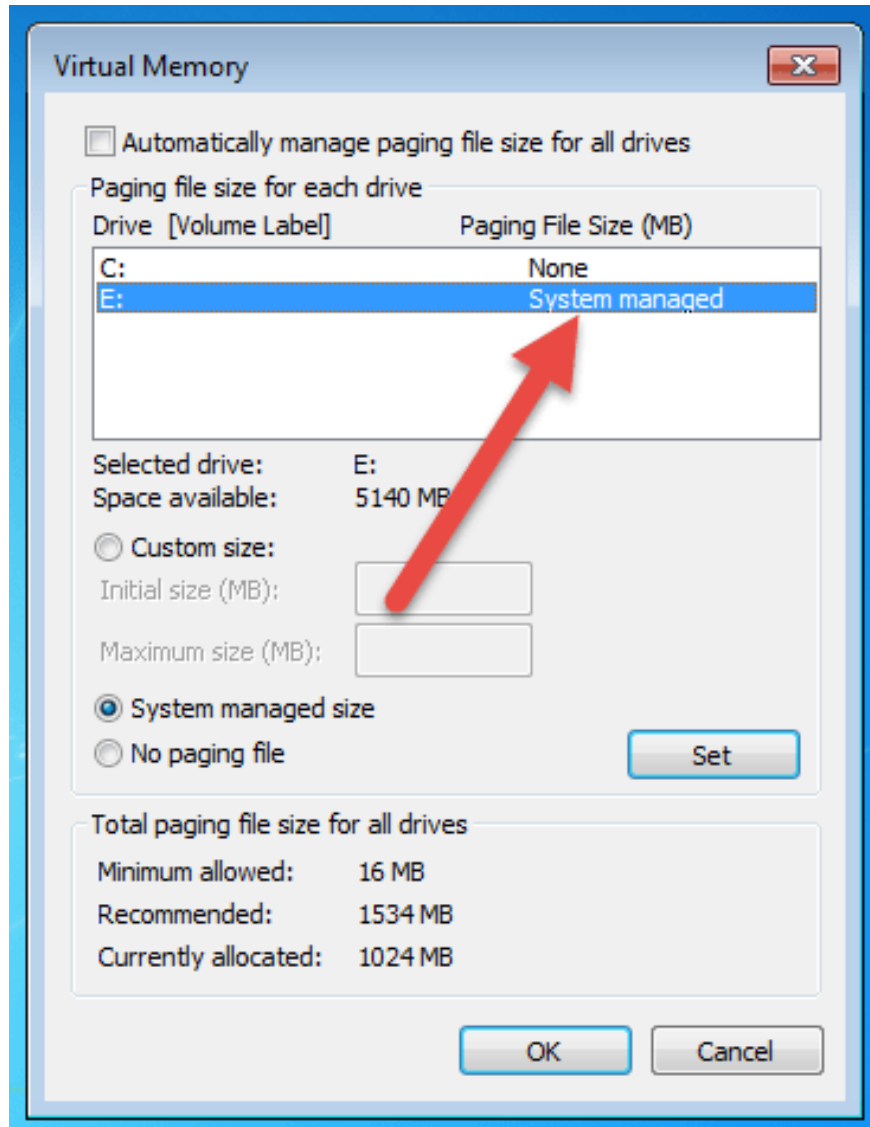
Check the **No Paging File option** , then click **Set** .



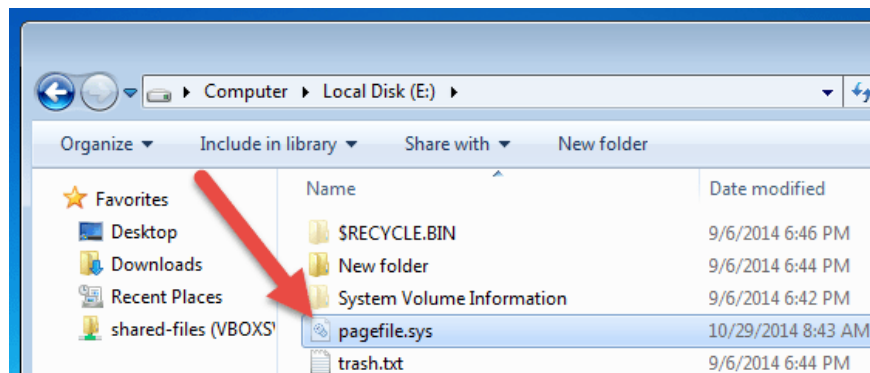
Next select the drive you want to store Pagefile.sys. Select **System managed size** then click **Set** to apply the change.



After you're done, click **OK** to close all windows.



Finally proceed to restart your system. So you have changed the Pagefile.sys storage location on Windows.



You can refer to some of the following articles:

1. **What is Hiberfil.sys? How to delete Hiberfil.sys?**
2. **What is Pagefile.sys? Can pagefile.sys be deleted?**
3. **What is Swapfile.sys, how to delete Swapfile.sys?**

I wish you and your family a happy and prosperous New Year!

You finished reading the article "**Instructions for changing Pagefile.sys size and location on Windows**" edited by the [TipsMake](#) team. We hope this article has provided you with many useful tech tips and tricks. You can search for similar articles on tips and guides. Thank you for reading and for following us regularly.
