

Instructions for activating TFTP and Telnet Client on Windows 10

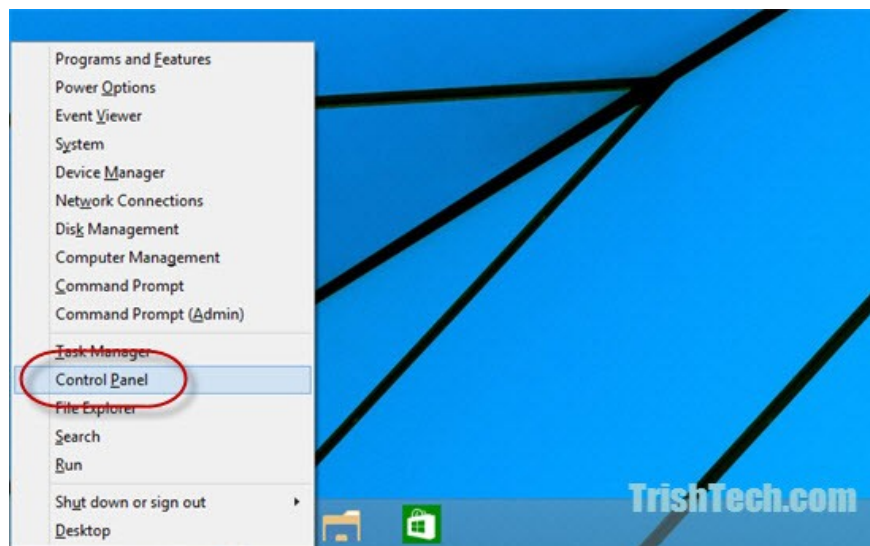
TFTP or Trivial File Transfer Protocol allows users to transfer files or transfer files from a remote computer. However, by default TFTP is disabled on Windows 10/8/7, so if you want to use TFTP you must enable the option.

TFTP or Trivial File Transfer Protocol allows users to transfer files or transfer files from a remote computer. However, by default TFTP is disabled on Windows 10/8/7, so if you want to use TFTP you must enable the option.

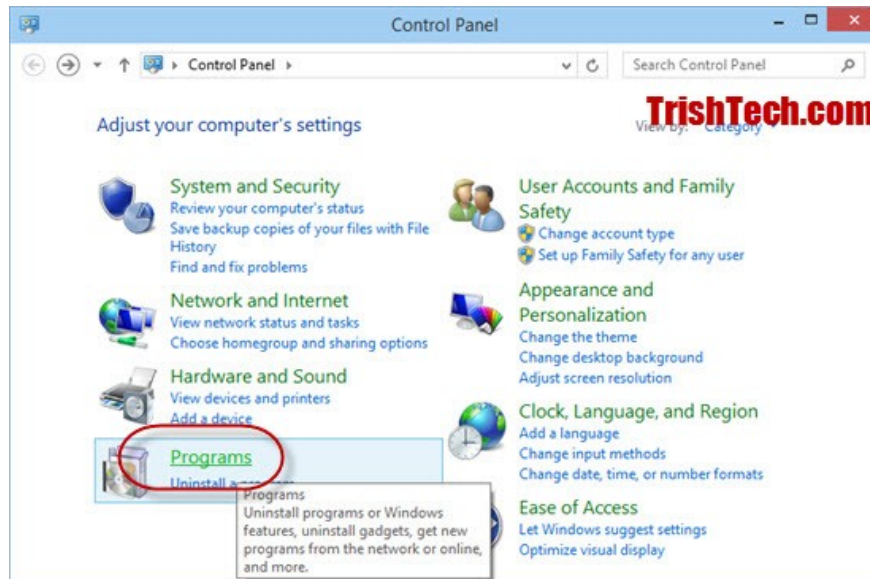
Enable TFTP and Telnet Client on Windows 10

To enable TFTP and Telnet Client on Windows 10, follow the steps below:

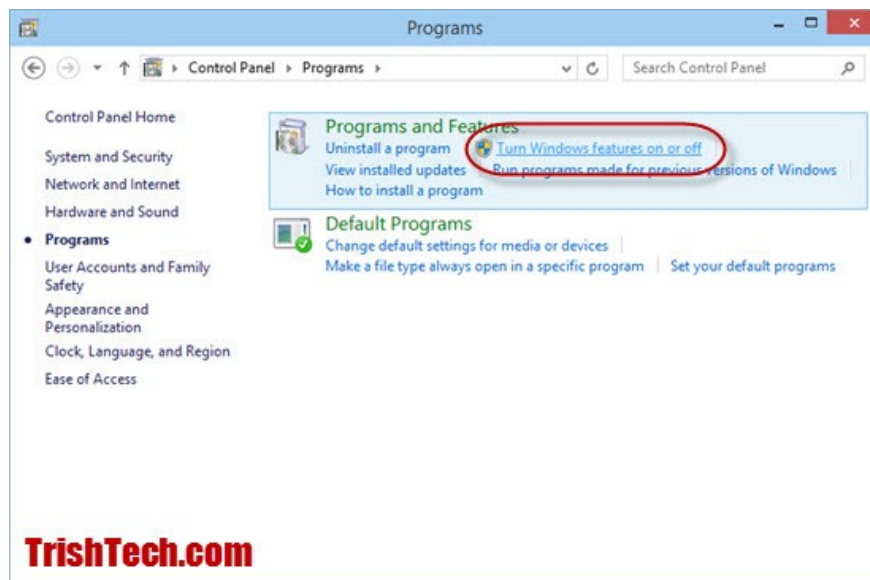
1. Press **Windows + X** key combination to open the Power User menu. Here you click **Control Panel** to open the Control Panel window.



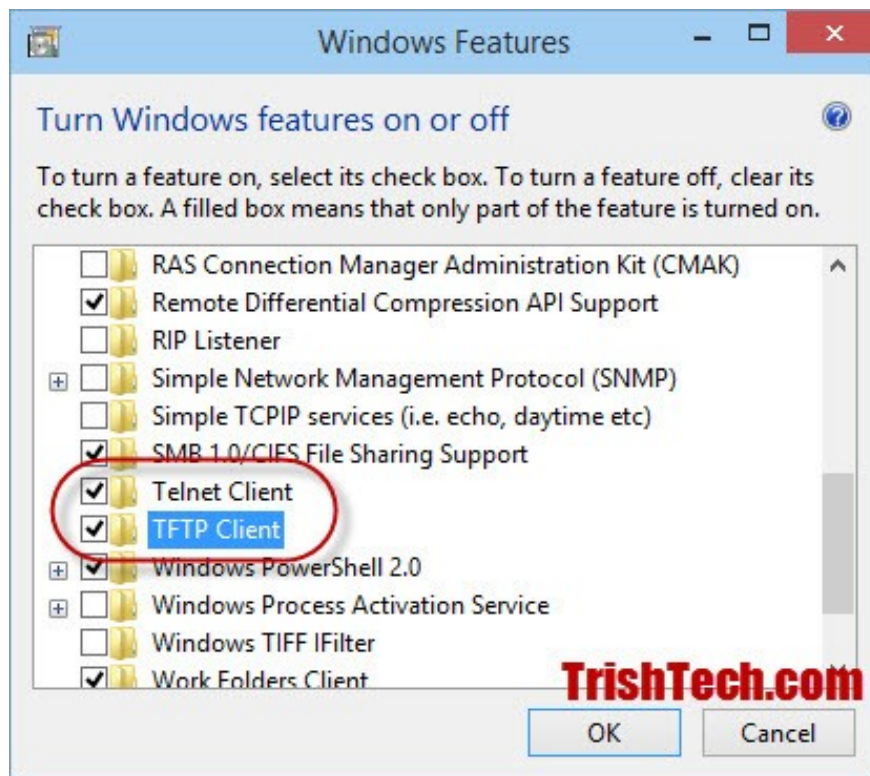
2. On the Control Panel window, find and click **Programs**.



3. On the next window, click the **Turn Windows features** link on or off under **Programs and Features**.



4. At this time, the Windows Features window appears. Here you find and select the **TFTP Client** and **Telnet Client** and click **OK**.



5. The activation process of Telnet and TFTP clients on Windows 10 will take some time. After finishing on the screen will display a Command Prompt window, you enter the **tftp** and **telnet** commands into it to check if these options are working properly.

Refer to some of the following articles:

1. Backspace key on Windows 10 can only delete 1 character, this is how to fix it
1. Summary of some ways to fix Windows 10 crash, BSOD error and restart error
1. Unusually high CPU error correction due to TiWorker.exe on Windows 10 / 8.1 / 8

Good luck!

You finished reading the article "**Instructions for activating TFTP and Telnet Client on Windows 10**" edited by the [TipsMake](#) team. We hope this article has provided you with many useful tech tips and tricks. You can search for similar articles on tips and guides. Thank you for reading and for following us regularly.