

# Installing Microsoft SQL Server on Ubuntu

You may not know this, but Microsoft is quite supportive of the open-source community. Proof of this is that some Microsoft software is available on Linux, including .NET and SQL. Below, TipsMake will guide you on how to install Microsoft SQL Server on Ubuntu.

If your purpose is testing, you can refer to the article **on how to install Ubuntu in VMware** and then follow the steps below from TipsMake **to install Microsoft SQL Server on Ubuntu** to ensure you don't encounter any serious problems during the process.

## Request

- The device you want to install SQL on must have at least 4GB of RAM.
- Your computer must be running Ubuntu 16.04 or 16.10.

## Install SQL

Make sure your Ubuntu computer is updated:

```
sudo apt-get update && sudo apt-get upgrade && sudo apt-get dist-upgrade
```

*Then add the SQL repository:*

```
curl https://packages.microsoft.com/keys/microsoft.asc | sudo apt-key add -
```

*Register a Microsoft Ubuntu repo:*

```
curl https://packages.microsoft.com/config/ubuntu/16.04/mssql-server.list | sudo tee /etc/apt/sources.list.d/mssql-server.list
```

*Update the repository:*

```
sudo apt-get update
```

*Install SQL:*

```
sudo apt-get update
```

The above command will begin installing SQL:



**sqlcmd -S localhost ( or the IP address of the server ) -U SA**

And you will be prompted to enter your SA account password.

To create the database, enter the command:

**CREATE DATABASE testdb;**

**GO**

To view the database on the server, enter the command:

**SELECT Name from sys.Databases;**

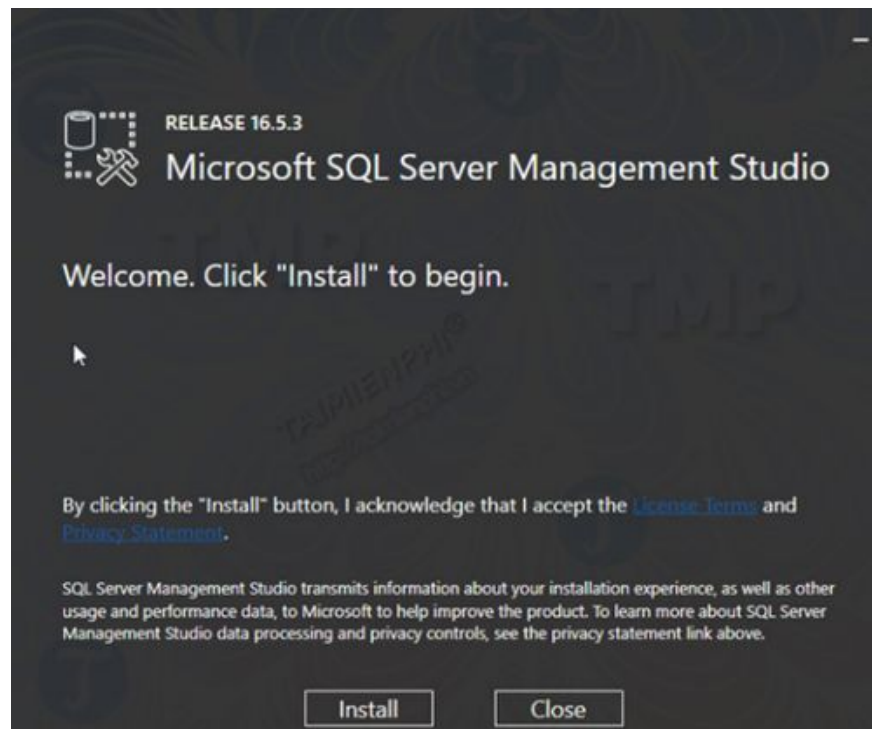
**GO**

To end a session, simply type **QUIT** . The syntax is quite similar to MySQL.

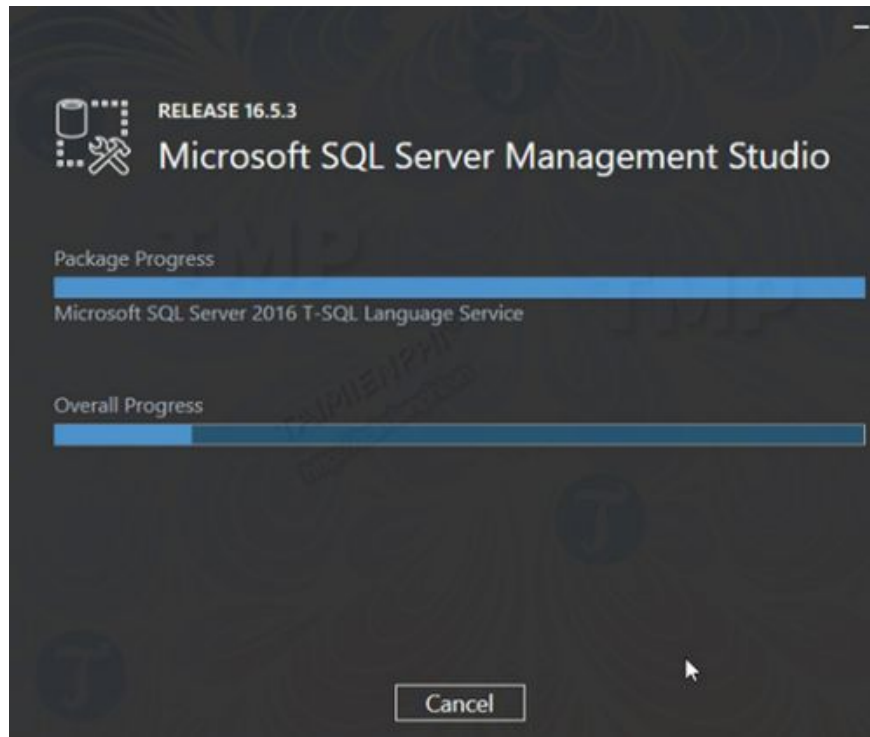
*Connect to the server using Microsoft Management Studio*

To manage servers on a Windows 10 computer, you can use Microsoft Management Studio.

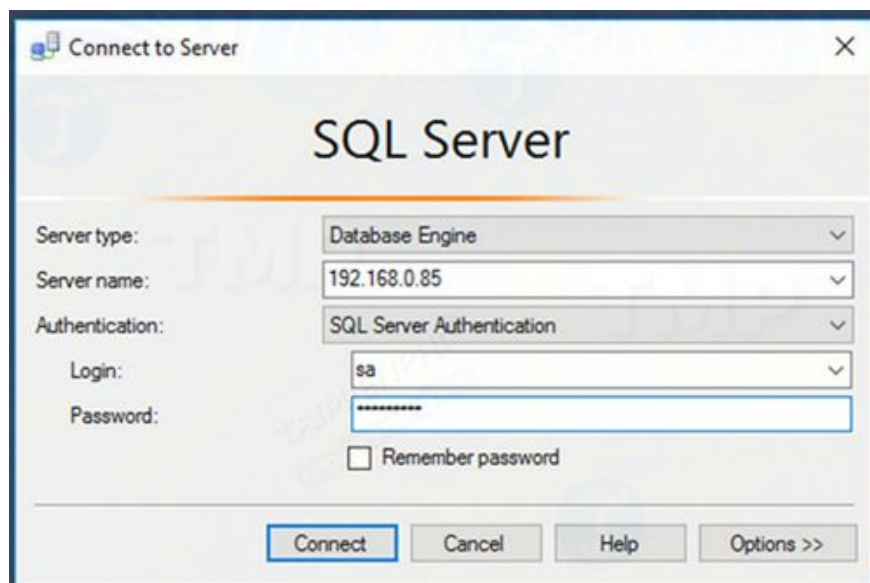
Download and install Microsoft Management Studio here: [Download Microsoft Management Studio](#)



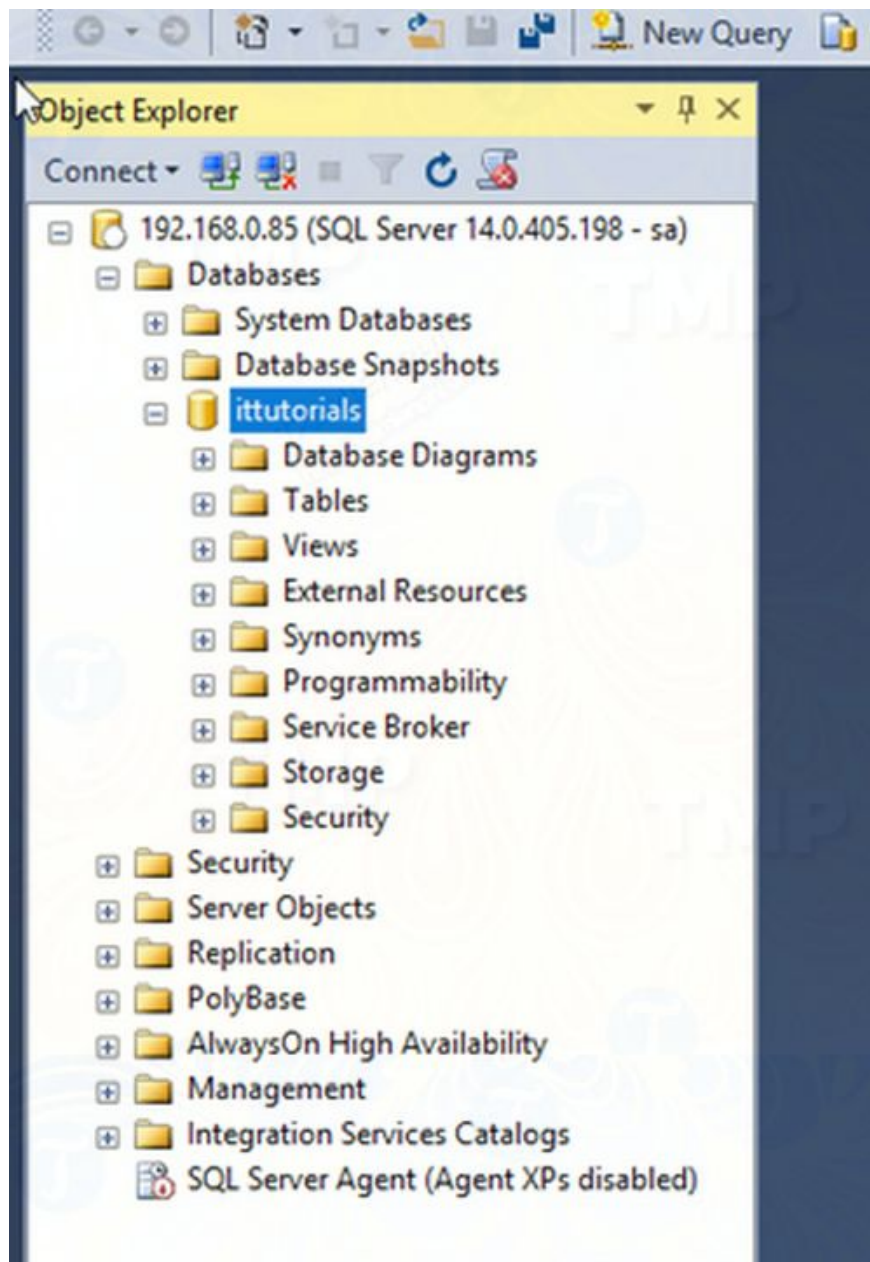
The installation process can be fast or slow depending on your computer's configuration.



After the installation process is complete, find and open Microsoft SQL Server Management Studio. Enter **the IP address** in the **Ubuntu name** field , select **SQL Server Authentication** from the **Authentication** menu . Enter your SA account username and password there.



You have now successfully connected to the server.



Above, TipsMake has guided you on how to install Microsoft SQL Server on Ubuntu. While you can only install Microsoft SQL Server on Ubuntu, you can install other software with just a few simple steps. You can also refer to how to install Java on Ubuntu for more detailed instructions. Any questions or comments are welcome in the comments section below the article.

You finished reading the article "**Installing Microsoft SQL Server on Ubuntu**" edited by the [TipsMake](#) team. We hope this article has provided you with many useful tech tips and tricks. You can search for similar articles on tips and guides. Thank you for reading and for following us regularly.