

# Install Windows 7 Beta

Windows 7 is the next operating system that Microsoft releases. This article will detail Windows 7 on your computer.

**Windows 7 is the next operating system that Microsoft releases. This article will detail Windows 7 on your computer.**

*Note* : Remember that at this time, Windows 7 is still a beta. Here we use version 7000.0.081212-1400 and use VMware Workstation 6.5 for installation.

## Step 1: Plan your installation

When running the Windows 7 installer, you must prepare information about the installation and configuration view of the operating system. Through this plan can help install Windows 7 more effectively by helping you stay away from the potential risks during the installation process. Understanding the configuration options will help ensure that you have configured your system correctly.

Here are some of the most important issues you should know when planning to install Windows 7:

- Check system requirements
- Check the compatibility of hardware and software
- Determine the drive to install
- Complete the checklist of previous installations

## Minimum requirements for installing Windows 7 :

- 1Ghz 32 bit or 64 bit processor
- Ram 1GB
- HDD: empty 16GB
- DirectX 9 support with 128M video card (to enable Aero interface to run)
- DVD-R / W
- Internet access (to download beta and update)

**Note** :

- Windows 7 Beta is a beta version of Windows. While we think it is a stable and high quality beta, it is not actually an official version. It may cause computer crashes or loss of data or important information.

- Beta will stop on August 1, 2009. To continue using it, please prepare to reinstall the previous version of Windows or a later release of Windows 7 before the beta expires. You will not be able to upgrade from the Beta to the official version of Windows 7.

After you are sure you can continue, begin the installation process.

**Step 2: Start the installation process**

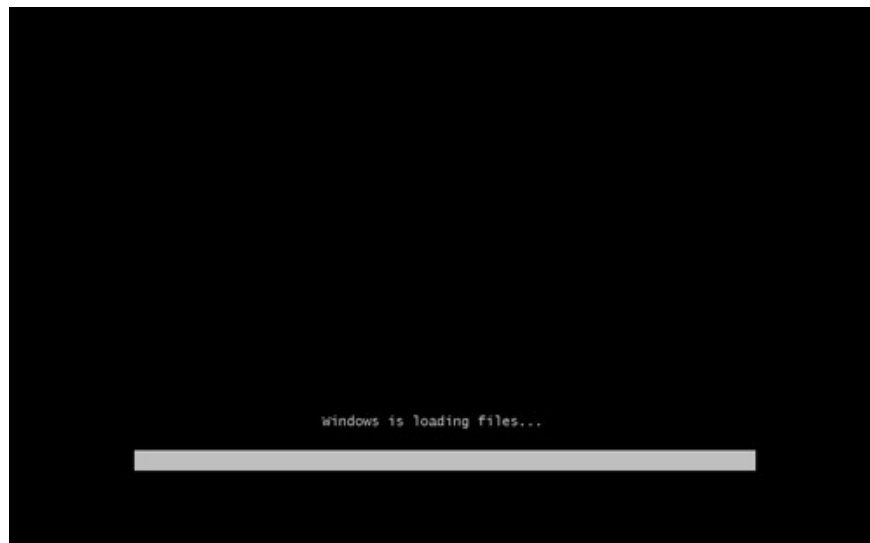
You can install Windows 7 in many ways - all reasonable and good, all depending on your needs and limitations. Here we will follow the simplest way of installing directly from the Windows 7 DVD disc.

**Note** : In January 2009, when downloading the Windows 7 beta file, you will receive the file 7000.0.081212-1400\_client\_en-us\_Ultimate-GB1CULFRE\_EN\_DVD.iso (with 32-bit version) or 7000.0.081212-1400\_client\_en-ú\_Ultimate-GB1CULXFRE\_EN\_DVD (for version 64 bit). The file name will change when the newer beta is released.

Download Windows 7 Beta **here** .

You can burn this ISO file to a DVD disc, but in this case we use a virtual machine, and therefore will simply mount the ISO file to the DVD of the virtual machine.

When installing on a real machine, just insert the Windows 7 DVD disc into the DVD drive and restart the computer. If you are asked to press any key to boot from a DVD or CD, press a key. A black window immediately appears when the DVD is read.



Next, the Windows installation screen will appear



If the Windows installation screen does not appear and you are not asked to press a key to boot from a DVD or CD, you must go to CMOS to configure the computer to boot from a DVD or CD.

### Step 3: Interface of the installation program

Like Windows Vista and Windows Server 2008, and unlike previous versions of Windows, Windows 7 does not have the text message segment of the installation, and it will boot directly into the graphical mode (GUI).

After a while you will see the following screen appear:

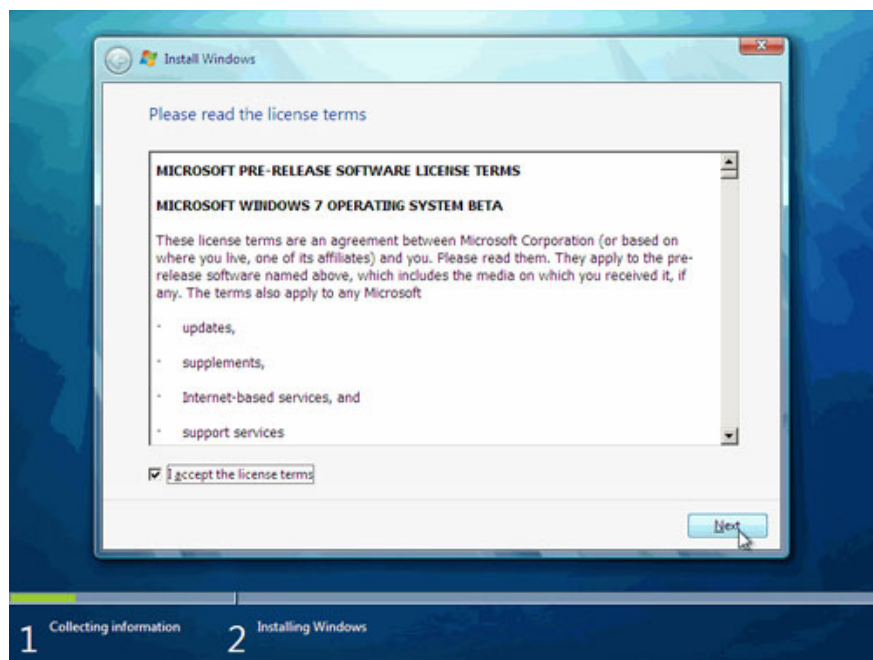


Click **Next** if you do not want to change the location and area settings for the installation

Click the **Install** button.

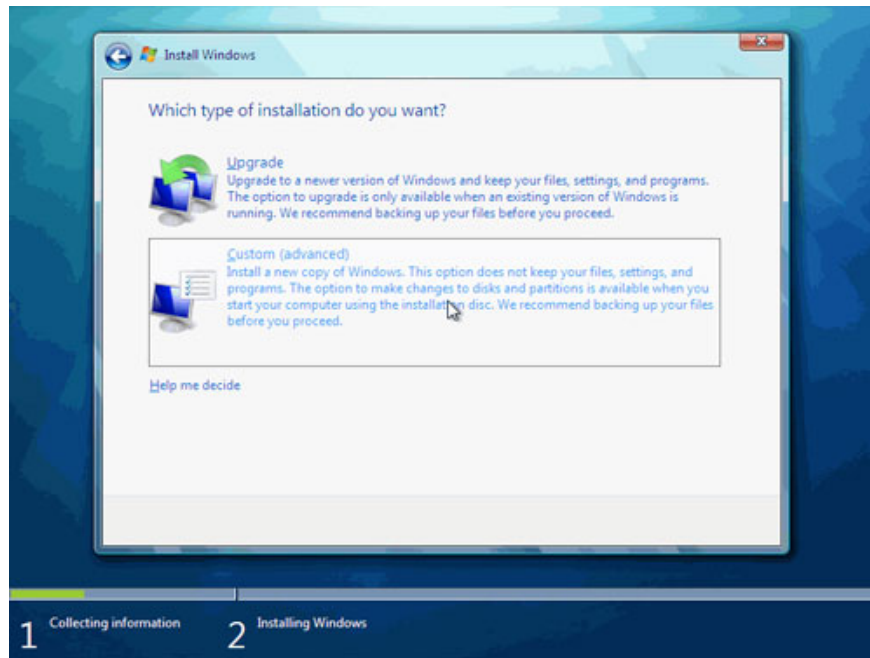


Then accept the terms of registration.

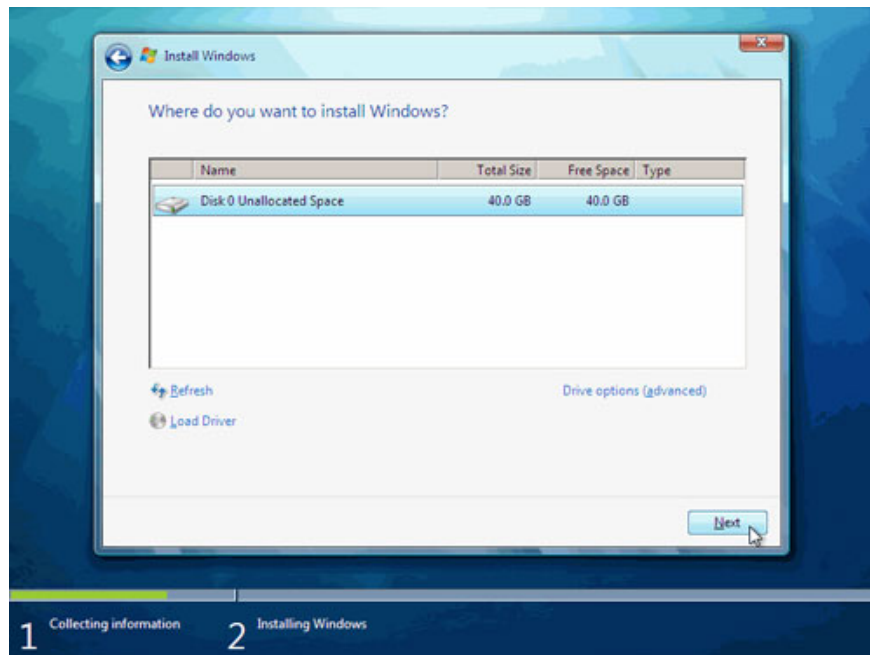


Then, if you don't upgrade an existing Windows version, click the **Custom (Advanced)** button .

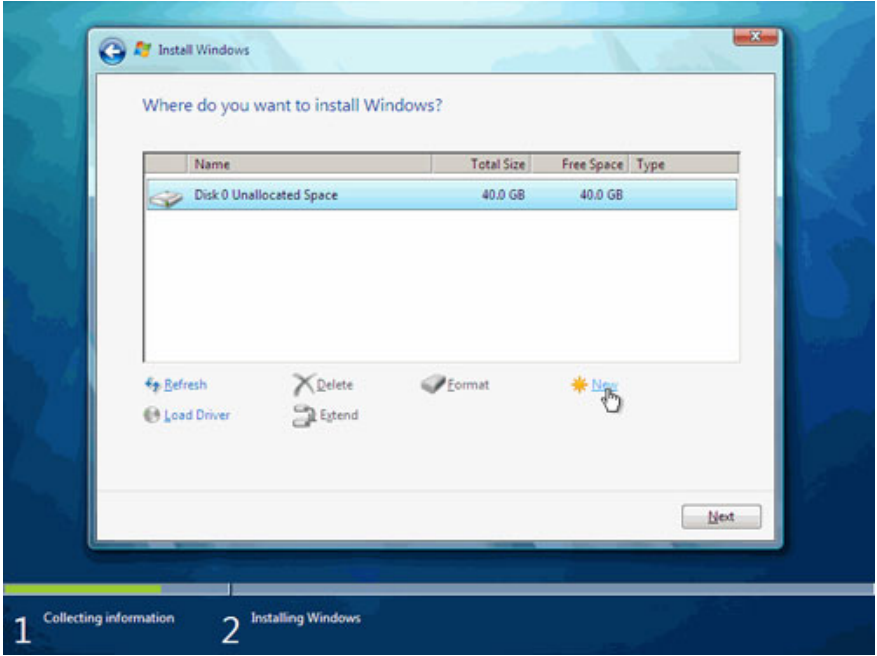
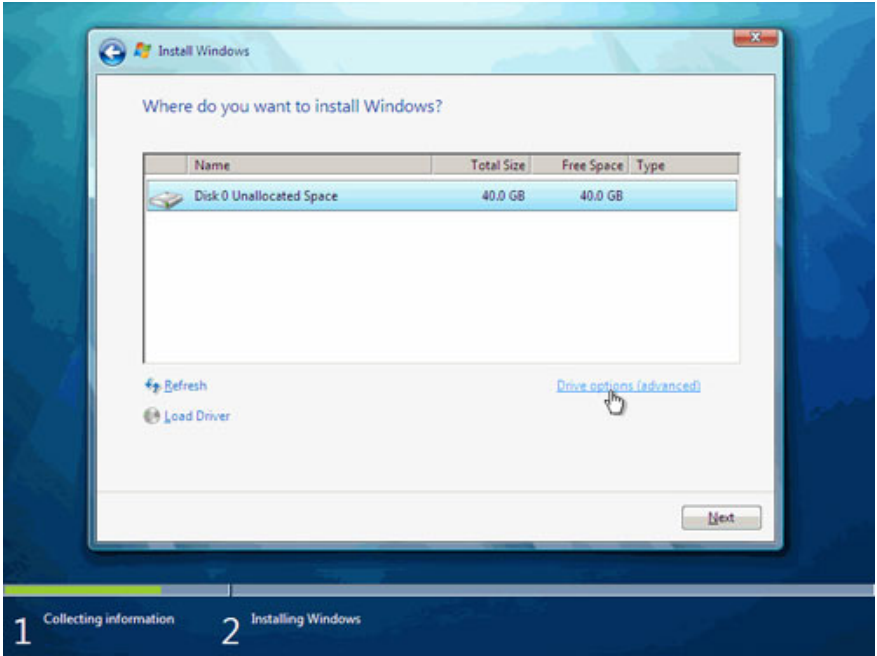
Note that in this case, the **Upgrade** button is disabled because this installation works on a new computer without any previous operating system.

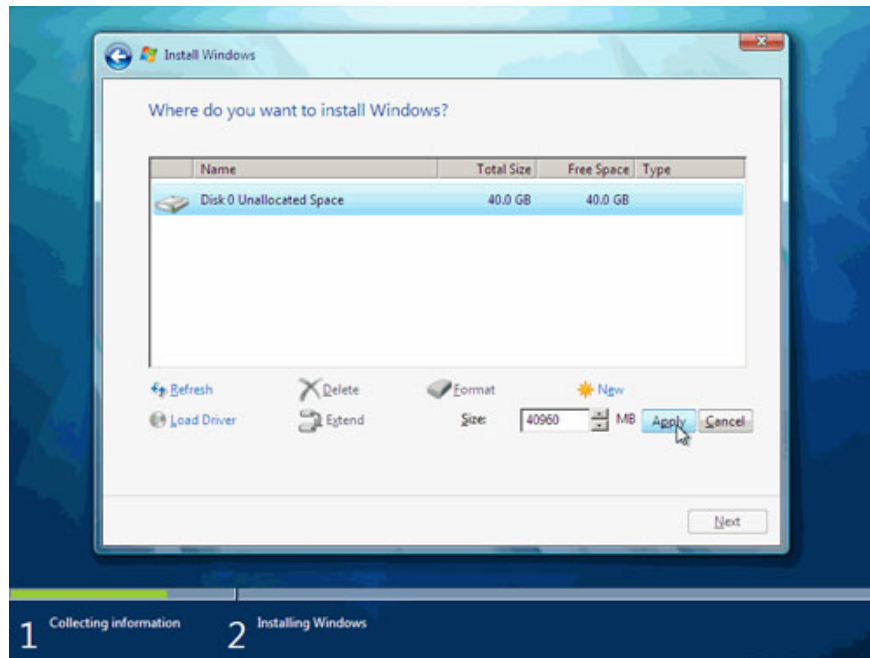


Next will choose the installation partition. When this computer has a drive that has not been formatted before, you will have only one option to create a new partition on it.



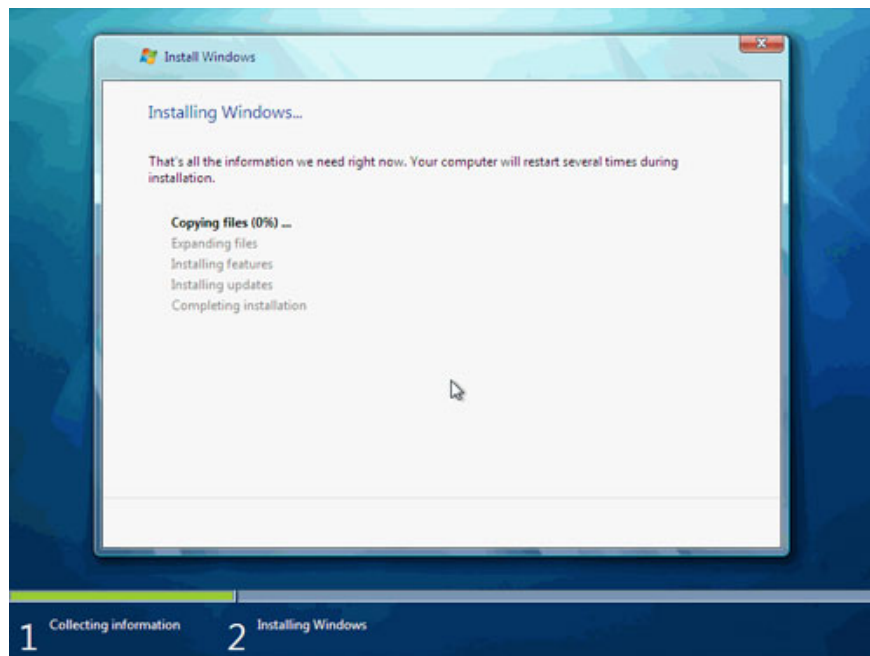
If you do not want to specify a partition to install Windows, or create partitions on your hard disk, click **Next** to begin the installation process. If you already have another partition with enough free space and want to install Windows 7 Beta on that partition to create a multiboot configuration, select the partition you want to use, and then click **Next** to get started. installer. ( *Make sure to install the Beta on a partition other than the current Windows partition already installed* ). If you want to create, expand, delete, or format a partition, click **Drive options (advanced)** , click the option you want, and then follow the instructions. Click **Next** to start the installation.



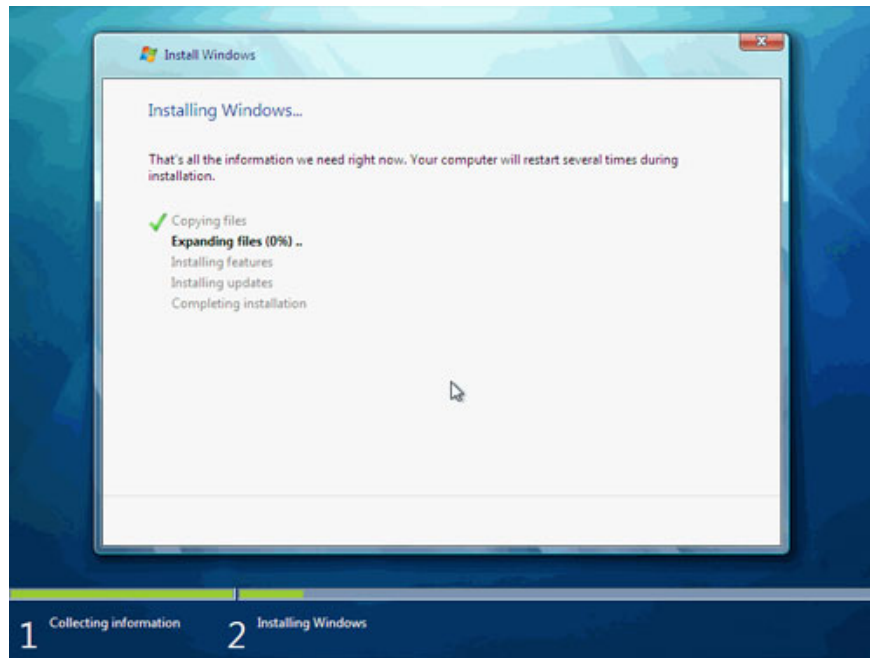


When you don't need to see any further, press the **Next** button. The installation process will create a partition on the available disk space, and format it.

The installation process now starts copying files from the DVD to the hard drive.

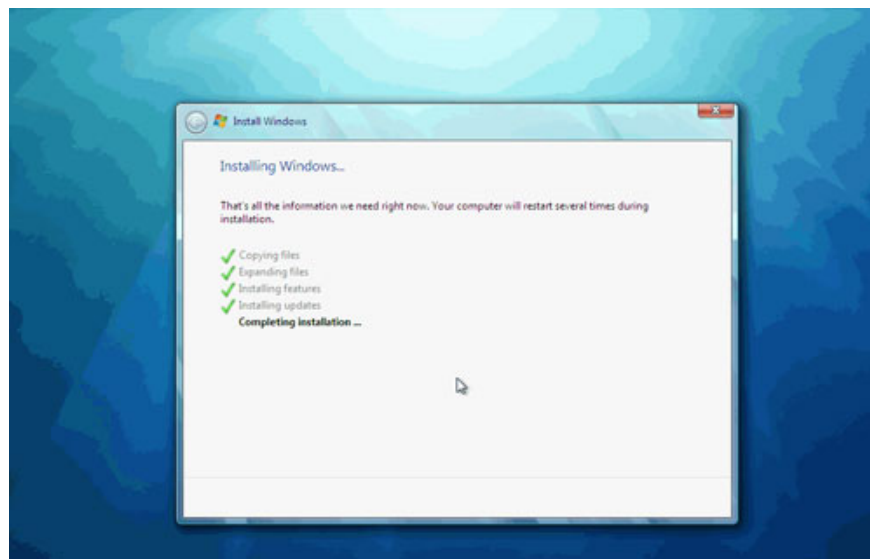


This takes a little time, but after that, the installation process will install the update for the operating system.

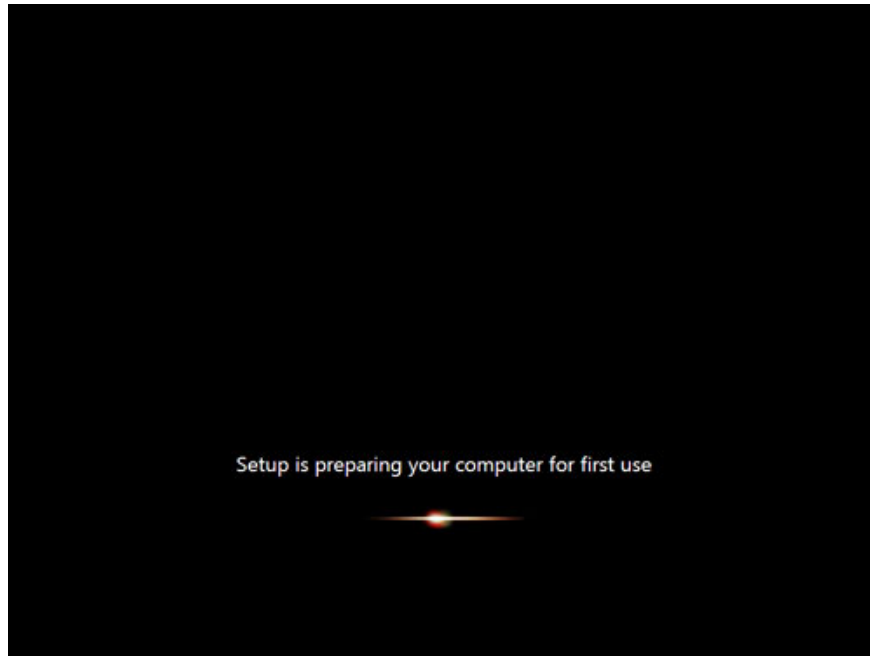


The computer will automatically restart

Now it doesn't take much time to wait. That depends on your computer hardware.

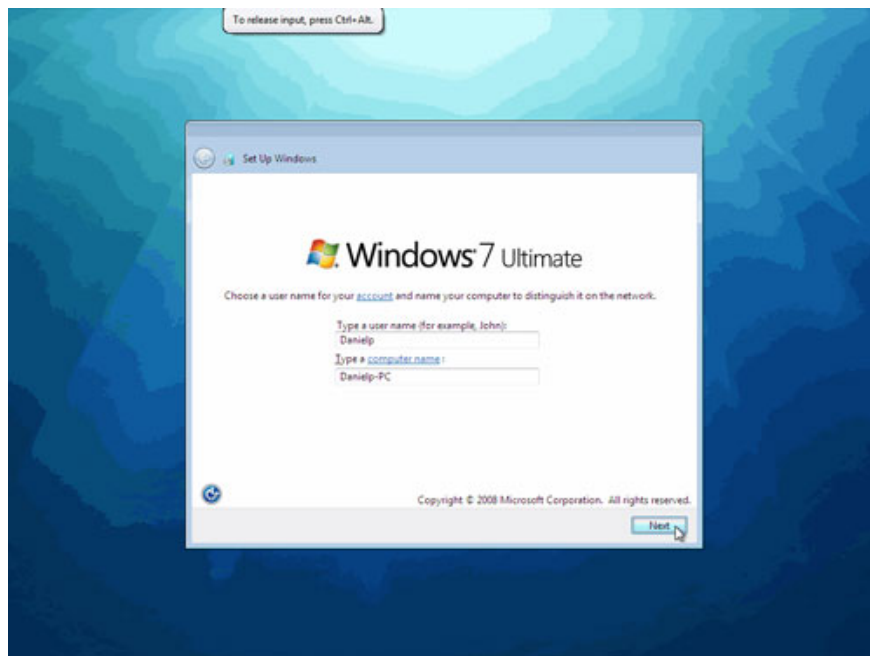


After waiting, the system will restart again

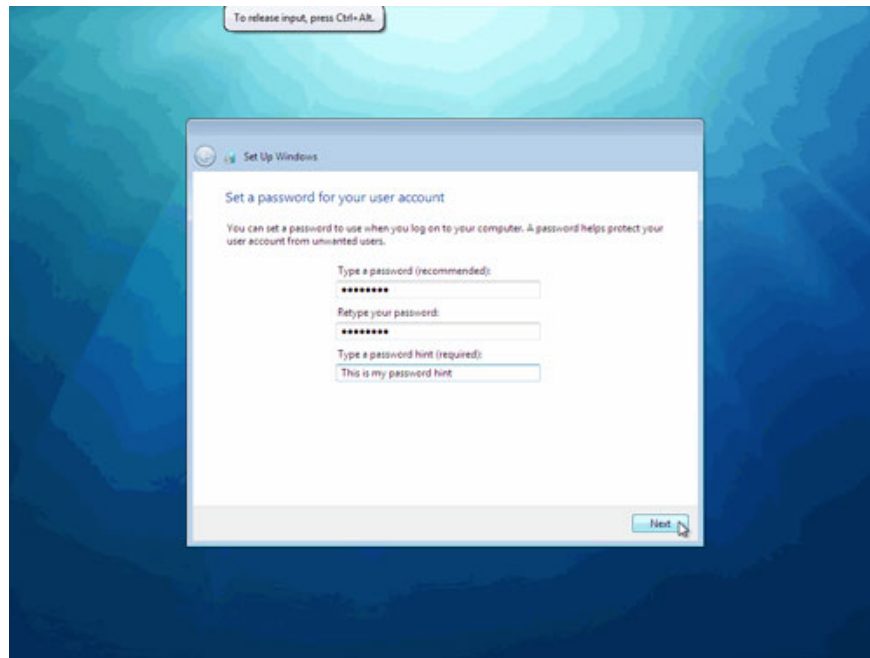


Next, the Windows installation screen appears. Please enter a username and the name of the computer. By default, the computer's *name* is *username-PC*, where username is the username you entered.

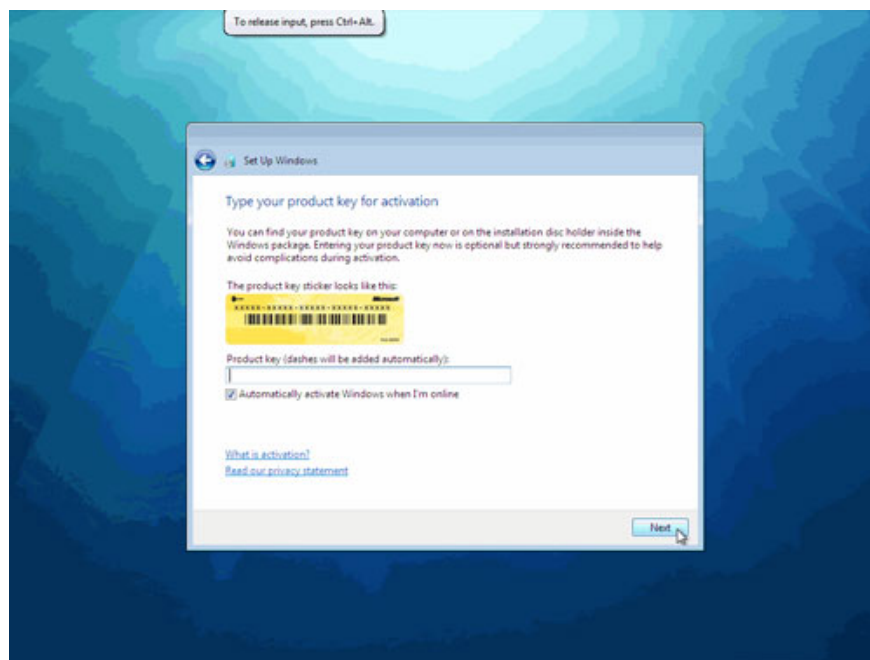
**Note** : The user you created is the only user on the system. Like Vista, the Administrator account is disabled.



Enter the password for that user, and confirm it. If you want, enter a password hint. Click **Next**. Although the installer will let you continue without entering a password, note that it's worth filling in the password here, and the best option is to choose a complex password that has at least 7 characters or more. (eg *p @ ssw0rd* or *Mypa \$\$ w0rd*). Make sure you remember it.



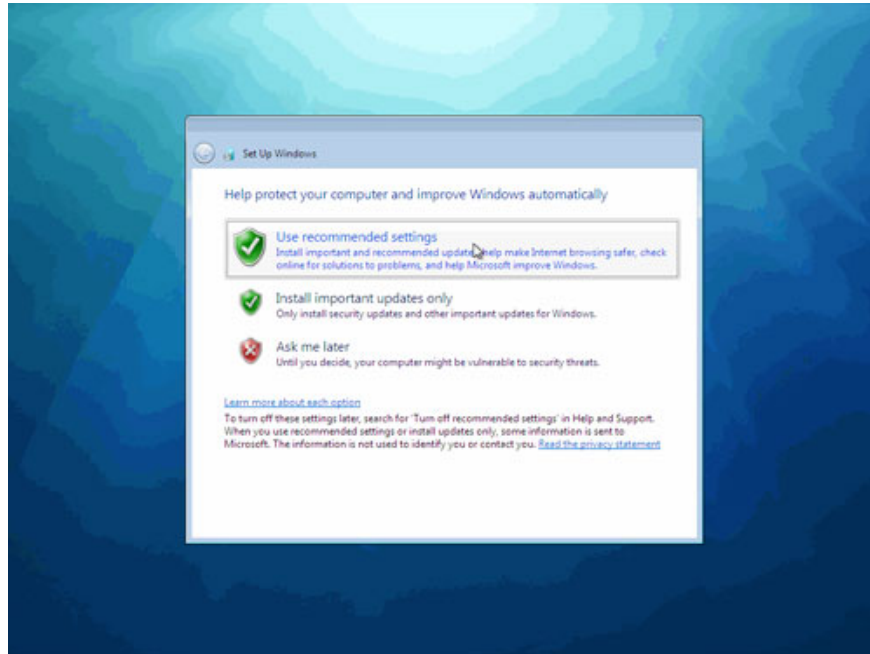
Type in the product key.



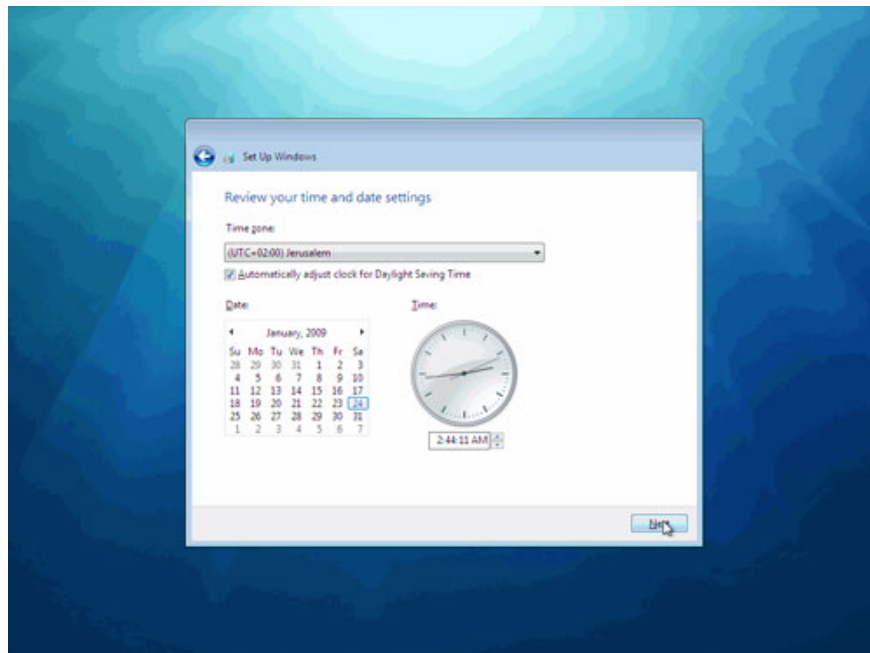
**Note** : With the Windows 7 beta installation, the product key can be obtained from the following link

If you do not have a product key, you can still click **Next** , and continue installing. You will be asked to enter product key after Windows has been installed.

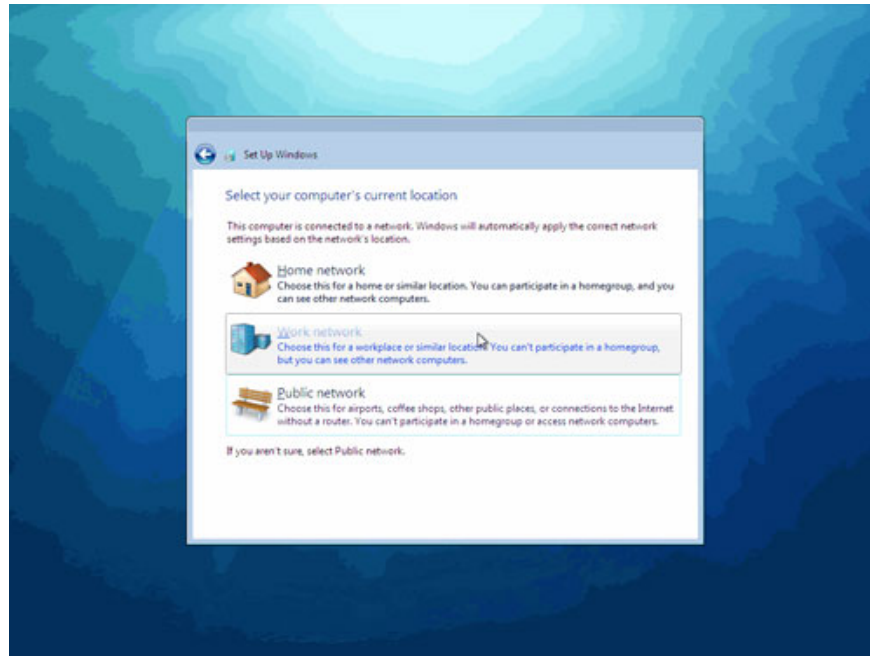
Choose what type of protection your computer needs. Recommended settings are best for those who do not plan to hide their computers behind firewalls (and although in some cases, this setting is the best option). If you plan to install a 3rd party firewall you can choose the following. Note how this setting will affect the computer using Microsoft Windows Update (Automatic Updates) feature.



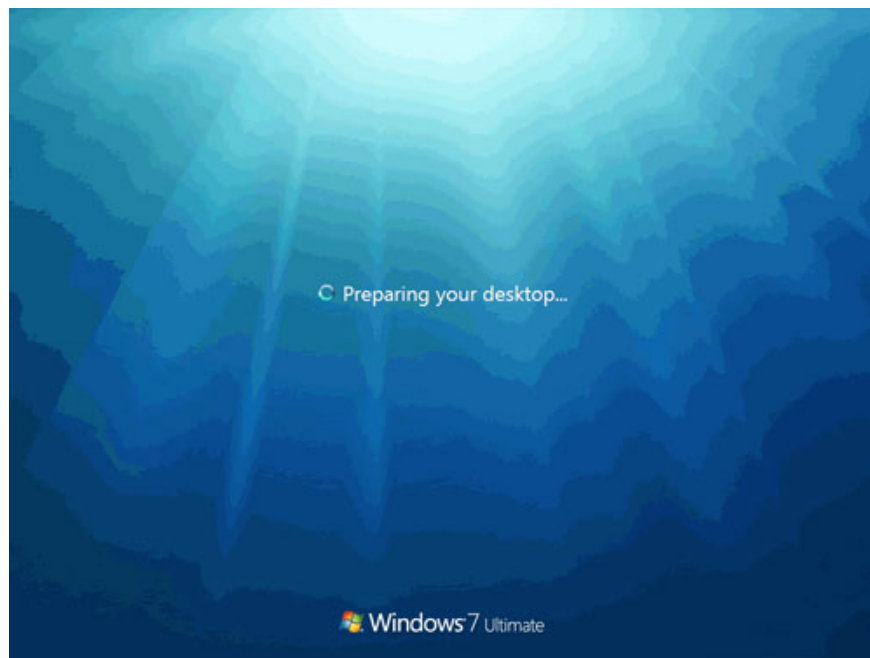
Then go to the Time Zone setting window. Select your zone and click **Next**



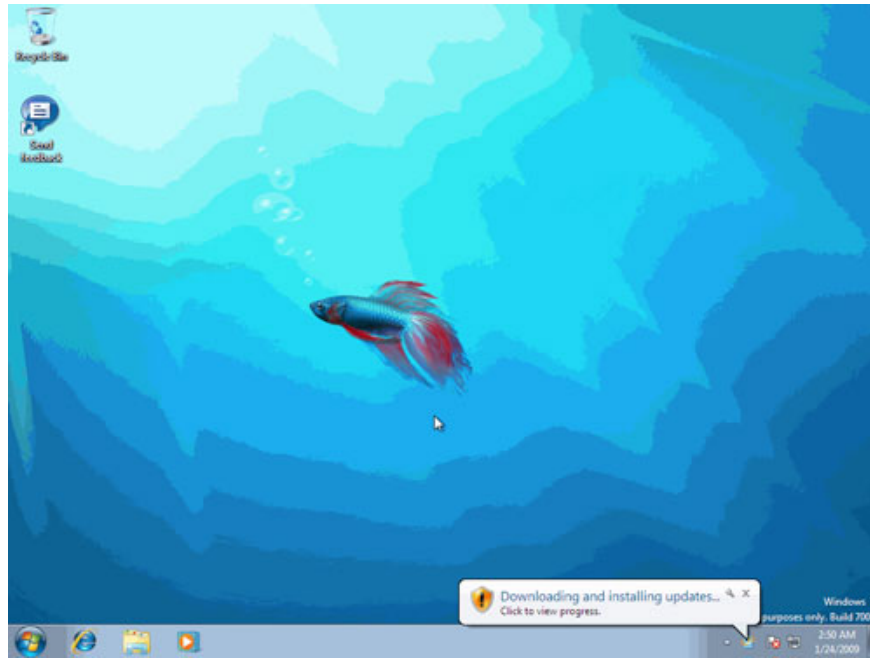
Choose your network type. This setting may change later, but be aware that selecting a profile affects Windows Firewall and sharing settings.



Windows will end the settings and your desktop will appear.



Note that if the computer has an Internet connection during the installation, it will automatically download and prompt you to install any corrupted hotfix or update the latest version.



You finished reading the article "**Install Windows 7 Beta**" edited by the [TipsMake](#) team. We hope this article has provided you with many useful tech tips and tricks. You can search for similar articles on tips and guides. Thank you for reading and for following us regularly.

---