

# Install the printer in a mixed Windows environment

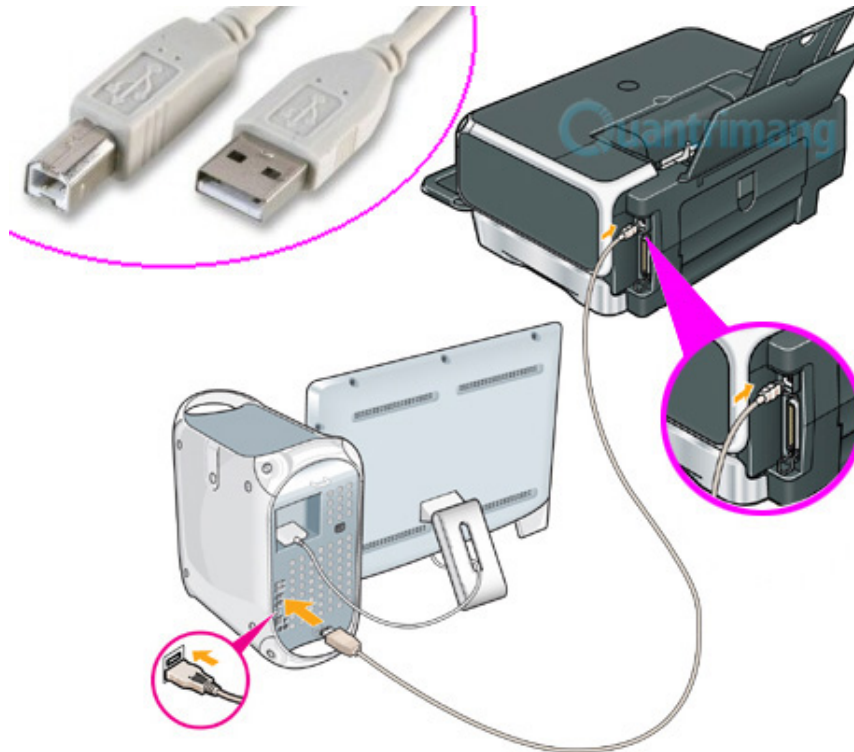
If the network also contains: Windows 7 32-bit / 64-bit, 32-bit / 64-bit Windows Server 2008, and Ubuntu, how to install the printer driver to ensure all computers printable?

*TipsMake.com* - **Installing and sharing printers in Windows network for sharing is a very familiar and easy to implement operation.**

If there are only Windows Server 2003 and Windows XP-based computers on your local network, we will connect and install each printer on these computers and conduct sharing for the computers running the system. operating the older version. However, if the network also contains: 32-bit / 64-bit Windows 7, 32-bit / 64-bit Windows Server 2008, and Ubuntu, how to install the printer driver to ensure it all computers are printable. This article shares a method of installing printers in this mixed network.

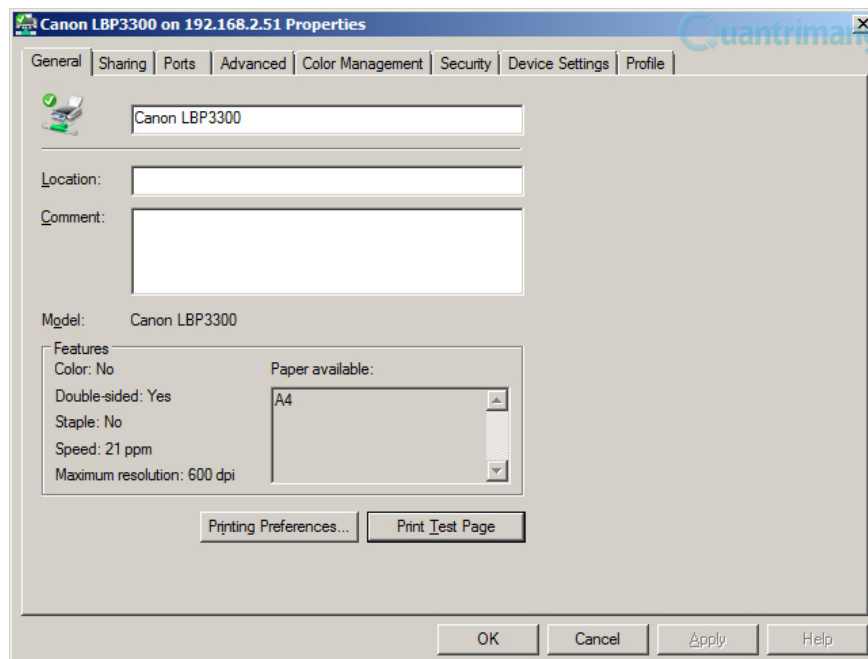
## 1. Select the computer to connect the printer

In the mixed network, if connecting the printer to install the corresponding driver to a Windows XP or Windows Server 2003 computer and sharing it, the computers will run newer versions of the operating system such as Windows 7, Windows Server 2008 will not connection is available. Therefore, we have to choose a computer running Windows 7 or Windows Server 2008 to connect, install the driver and share. The figure below illustrates the cable and how to connect the printer and computer via USB:

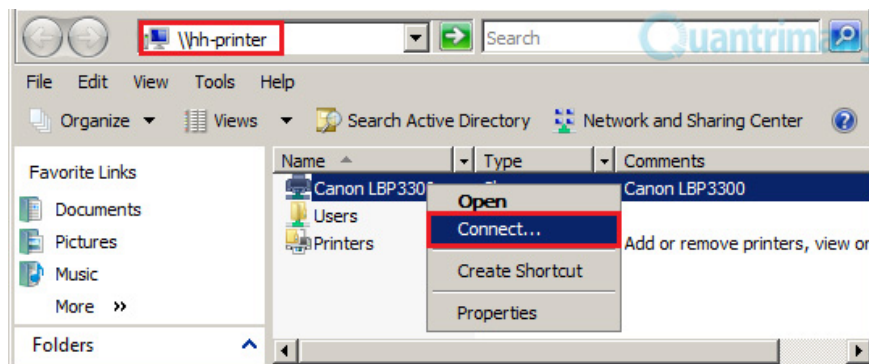


## 2. Install 32-bit driver

Typically, the network will consist of most computers running 32-bit operating systems. Therefore, you should connect and install the printer driver to a computer running a 32-bit operating system such as Windows 7 or Windows Server 2008 32-bit. Specifically, for an LBP3300 printer, after connecting the cable between the printer and the computer, insert the driver CD into the computer and perform the necessary operations to install the printer driver. If there is no driver disk, you can find and download it on the Internet. After installing the driver, don't forget to print a test page to make sure the printer is working properly.



After installing the driver, the printer will automatically be shared to all other computers on the local network. To connect to a shared printer, you access the name or IP address of the computer that contains the printer (computer connected to the printer), such as the *hh-printer* . When the printer appears, right-click, select **Connect** . On the first connection, the driver will automatically be downloaded from the *hh-printer* and installed on your computer. This operation can last from one to several minutes depending on the computer being strong or weak. When this step is successful, you can print comfortably.



### 3. Install 64-bit driver

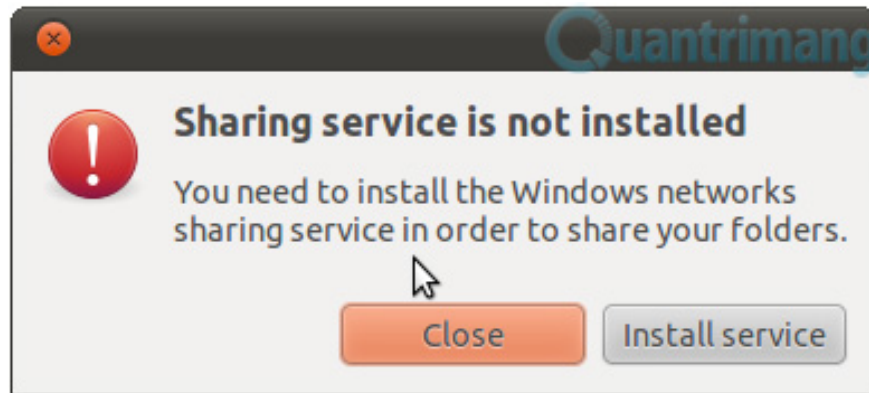
When installing the printer driver on a 32-bit computer and sharing it, computers running the 64-bit operating system will not be able to access the printer. The reason is that the printer driver running on the *hh-printer* is 32-bit, so after being downloaded to a 64-bit computer it cannot be installed because of different architectures. Therefore, for computers such as Windows Server 2003 64-bit, Windows 7 64-bit, Windows Server 2008 64-bit . you will have to follow another way to connect to the shared printer on *hh-printer* .

Specifically, you install the 64-bit printer driver directly onto each 64-bit computer. For example, for a computer running 64-bit, *hh-file* Windows Server 2008, insert the CD containing the 64-bit driver of the printer into the computer and perform the necessary steps to install the driver to the 64- computer. this bit. If there is no driver disk, you can find and download it on the Internet. Once you have successfully completed this step, you proceed to connect to the shared printer in the same way that 32-bit Windows computers do.

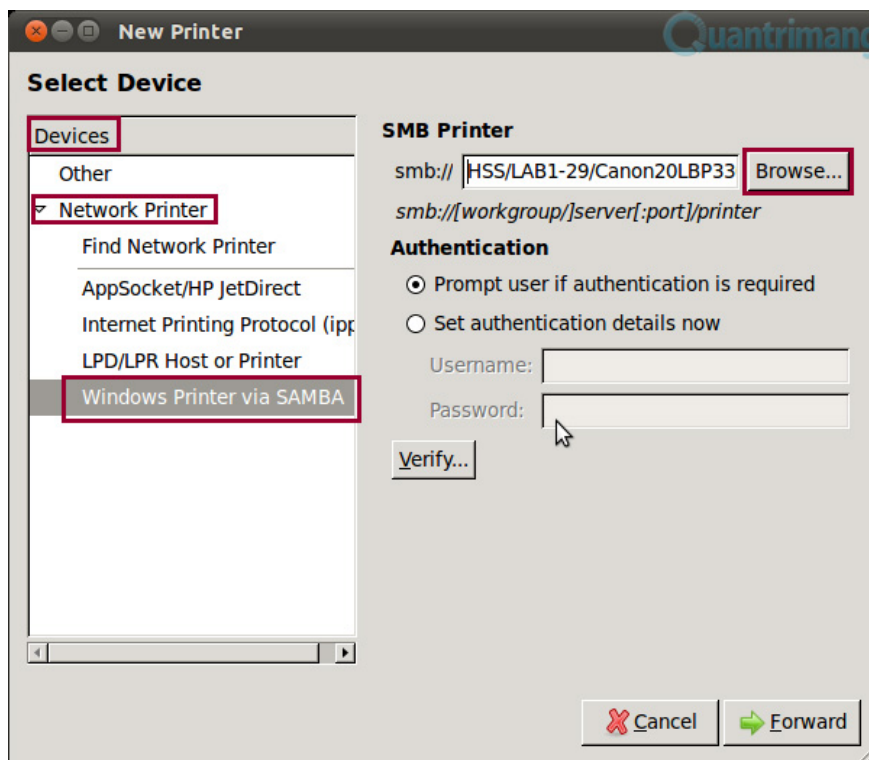
### 4. With Ubuntu 11.04

With Ubuntu, connecting to the printer is done in two steps: installing SAMBA and connecting to the printer. SAMBA is a service that allows Linux computers in general and Ubuntu in particular to connect to Windows networks. Once installed SAMBA, Ubuntu computers, such as *hh-ubuntu* , can perform many of the same roles as a Windows computer in the Windows network itself.

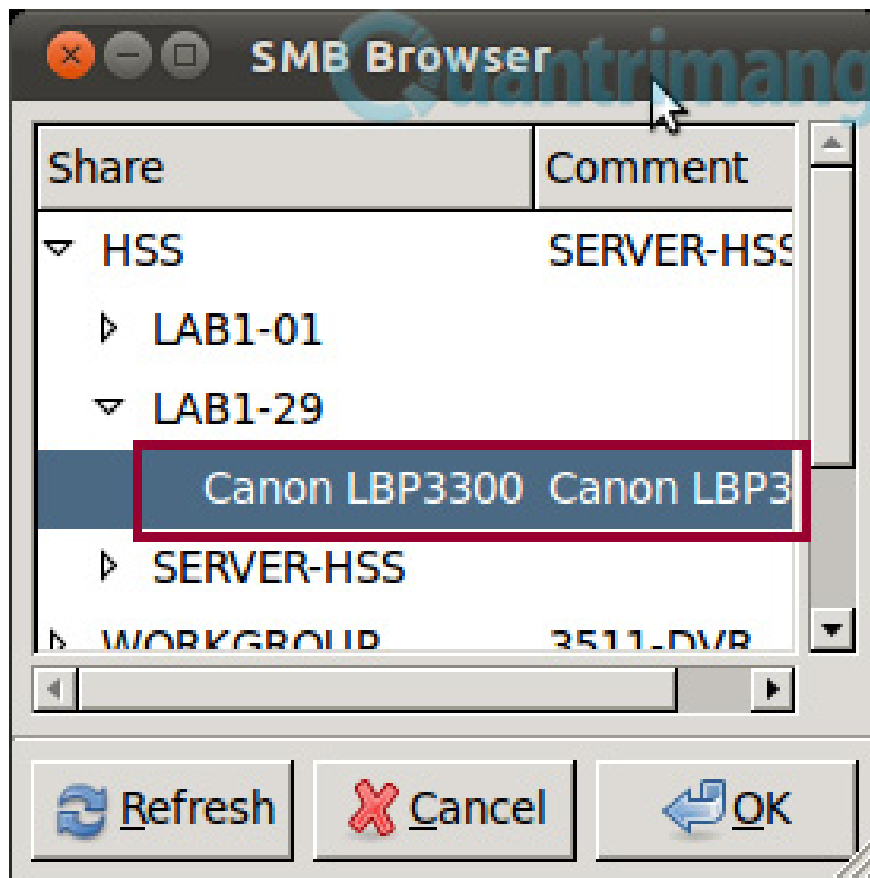
To install SAMBA, right-click on any folder, select **Sharing Options** . In the *Folder Sharing* dialog box, check the **Share this folder** . Immediately, a warning box asking for SAMBA installation appears. You click the **Install service** button to install this service on Ubuntu.



Next, connect to the shared printer by clicking the **System > Administration > Printing** menu. In the *New Printer* dialog box, in the *Devices* pane on the left, click the **Network Printer** tab, select **Windows Printer via SAMBA**. In the corresponding right pane, click the **Browse** button.



In the *SMB Browser* dialog box, you expand the domain or workgroup in your local network and select the printer. After selecting, press the **OK** button.



For the remaining steps, follow the instructions screen to install the shared printer on Ubuntu to Windows. Once successfully installed, you can perform printing operations from Ubuntu to Windows.

You finished reading the article "**Install the printer in a mixed Windows environment**" edited by the [TipsMake](#) team. We hope this article has provided you with many useful tech tips and tricks. You can search for similar articles on tips and guides. Thank you for reading and for following us regularly.