

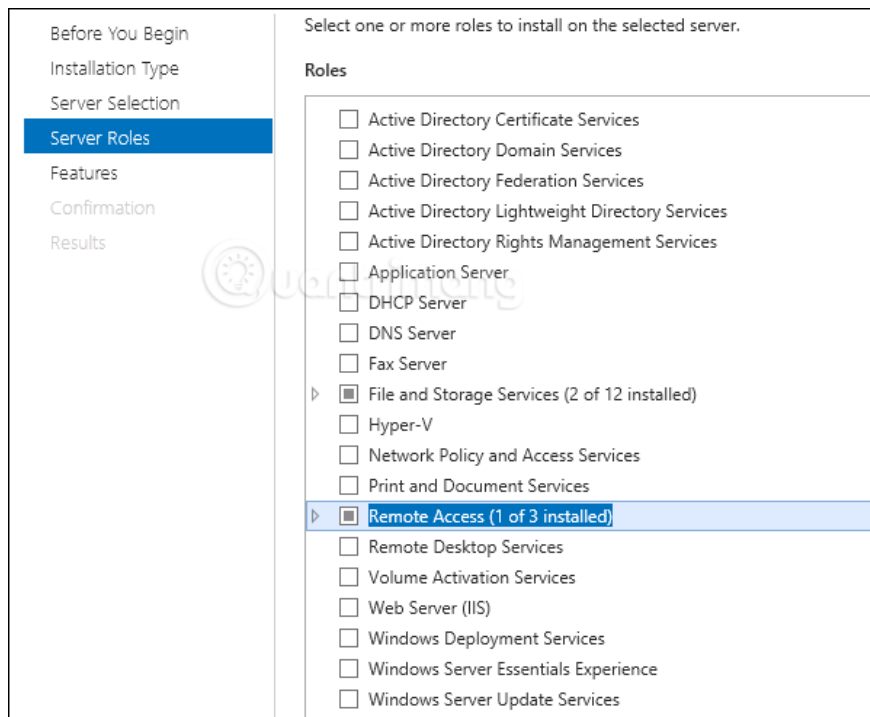
Install Role, configure role on Windows Server 2012

Like previous versions, Windows Server 2012 has many associated roles. Roles and Features are tools you need to install or enable to complete your IT administration tasks, if you don't install them, you can't do anything. In this article, we will learn how to install and configure the most important roles.

Like previous versions, Windows Server 2012 has many associated server roles. Roles are one of the tools you need to install or activate to complete your IT administration tasks, if you don't install them, you can't do anything. In addition to Role, there is also Feature, which together with Role creates an indispensable tool set on each Server.

In this article, we will learn how to install and configure the most important roles.

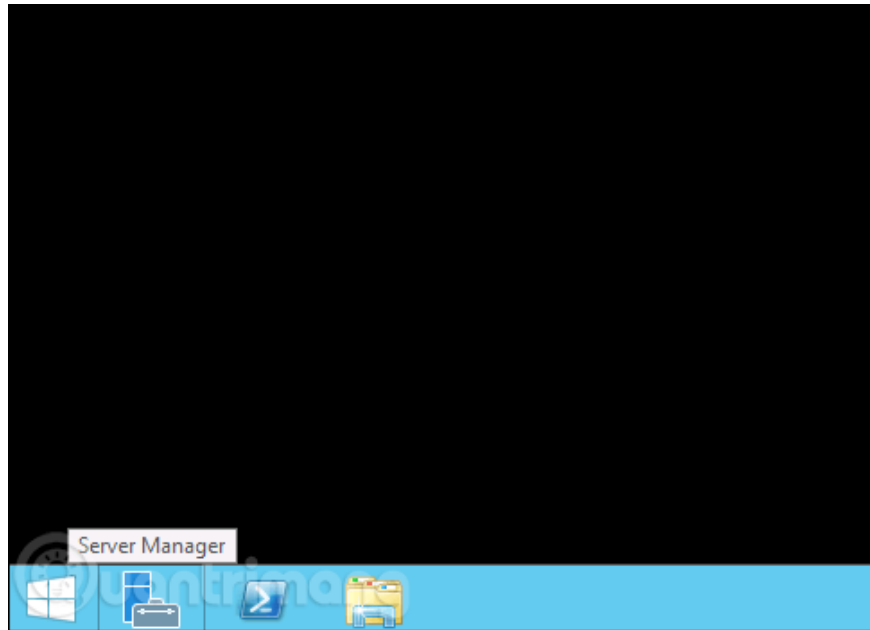
The figure below shows you all the rollers in Windows Server 2012.



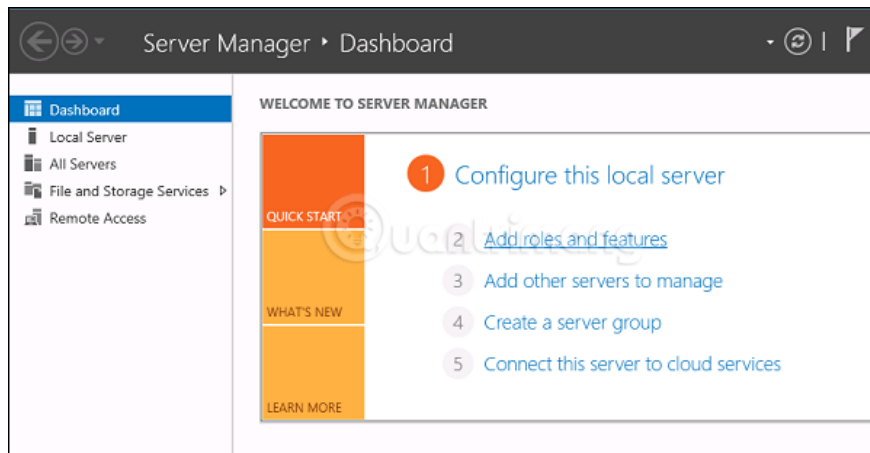
Instructions for installing roles in Windows Server 2012

To add a role and server, you need to follow the steps below:

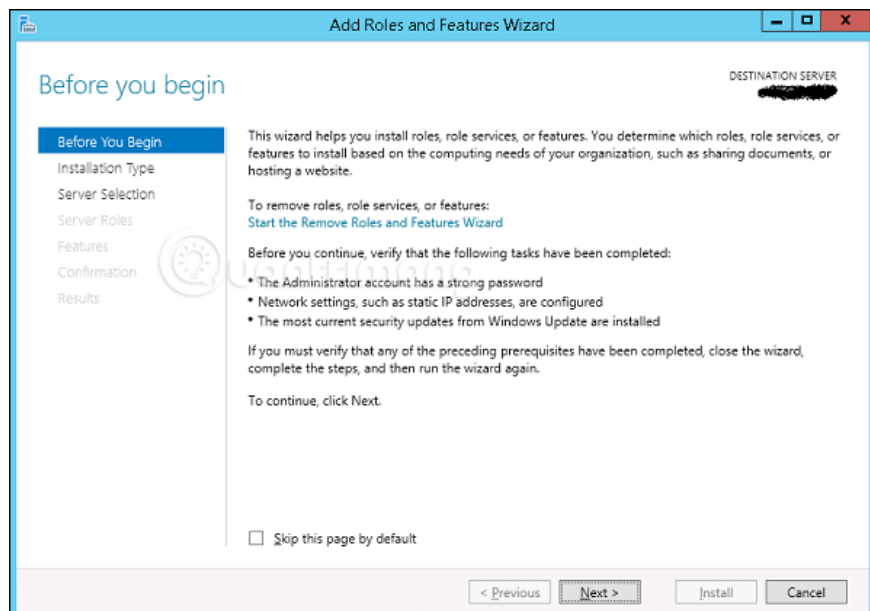
Step 1: Click on Server Manager on the task bar as shown below:



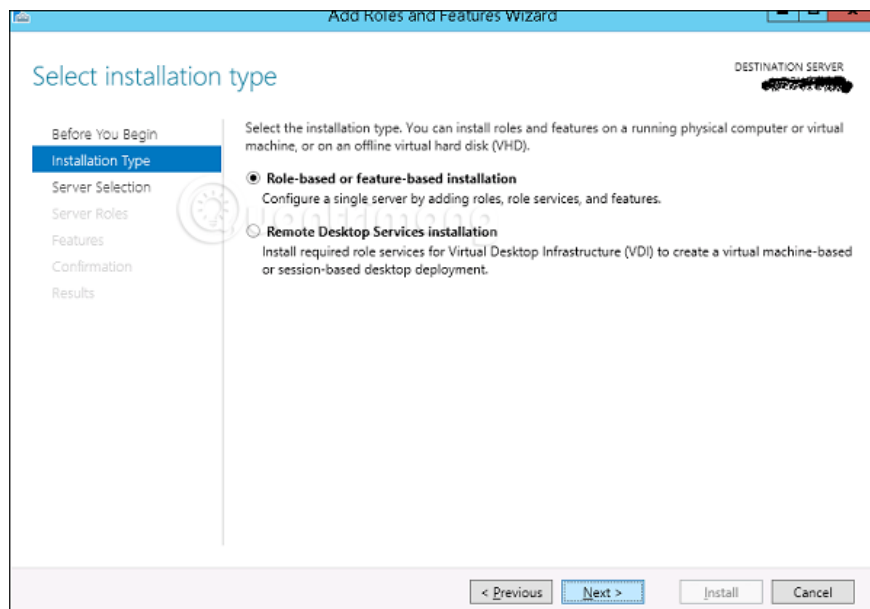
Step 2: Click Add roles and features.



Step 3: Click the Next button when the screen below appears.

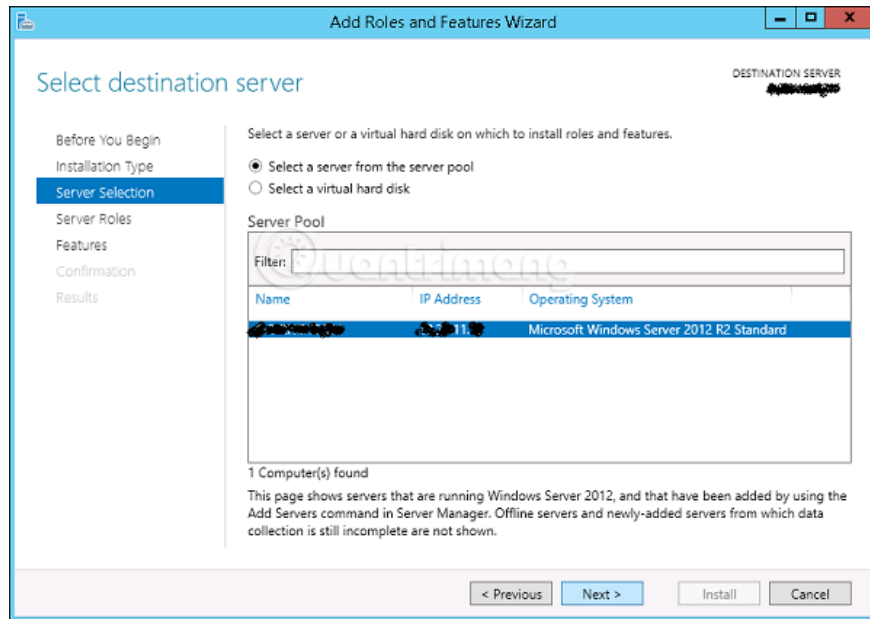


Step 4: Select **Role-based or feature-based installation** and click **Next** .

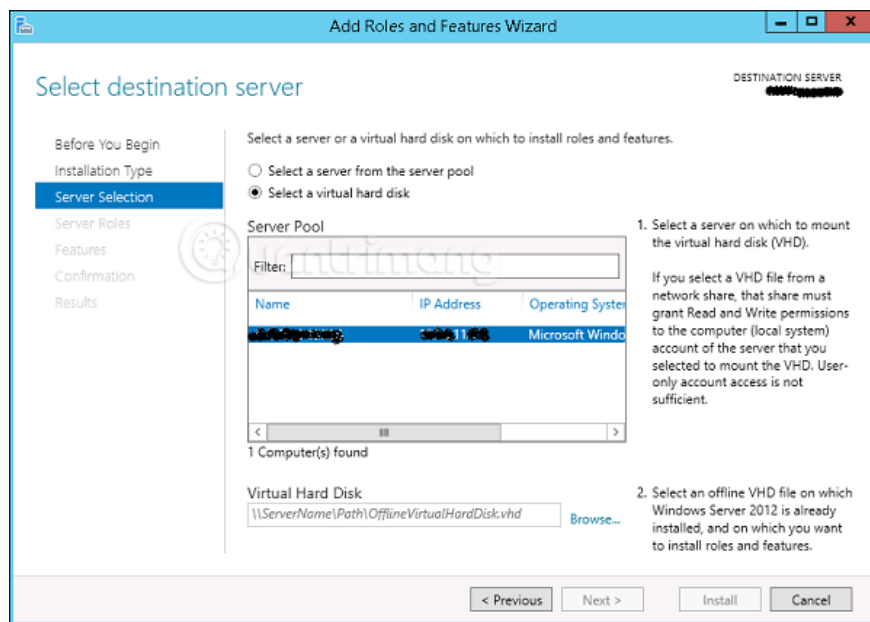


In the next screen, you will have 2 options:

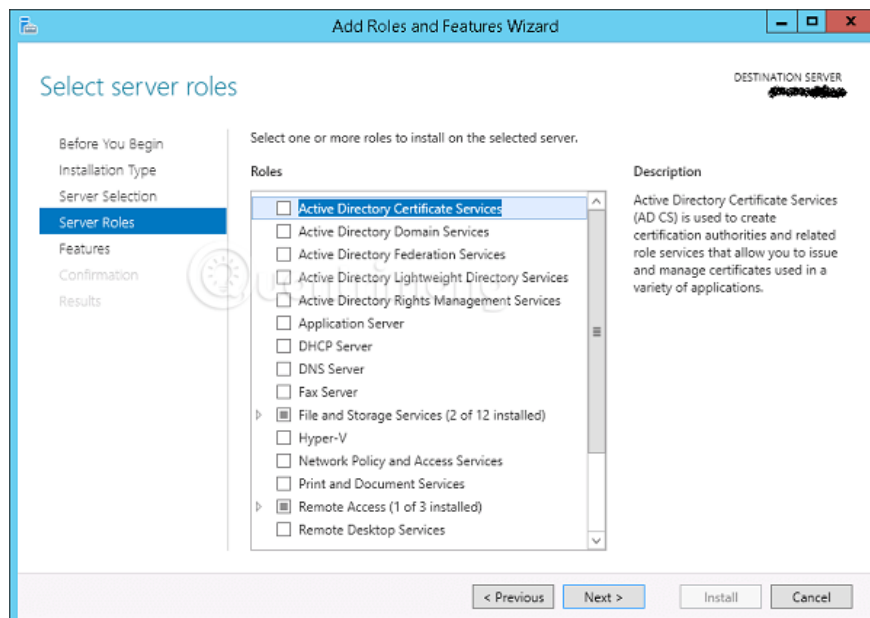
1. Select a server from the server pool: If you want to install services on the physical server.



1. Select a virtual Hard disk: If you want to install the service on a virtual drive located on the network drive. Look at the picture to make it easier to understand:



Step 5: In the last step, you will check the service you want to install.



In the following sections we will continue this installation step for important services.

Next article: [How to use PowerShell in Windows Server 2012](#)

Previous article: [Instructions for installing Windows Server 2012 step by step](#)

You finished reading the article "**Install Role, configure role on Windows Server 2012**" edited by the [TipsMake](#) team. We hope this article has provided you with many useful tech tips and tricks. You can search for similar articles on tips and guides. Thank you for reading and for following us regularly.