

Install and use Corel, design professional images with CorelDraw.

CorelDraw graphic design software allows users to perform tasks such as adding special effects to borders or images, as well as adjusting contrast, color balance, and more. Installing and using CorelDRAW is also quite simple, making it suitable for a wide range of users.

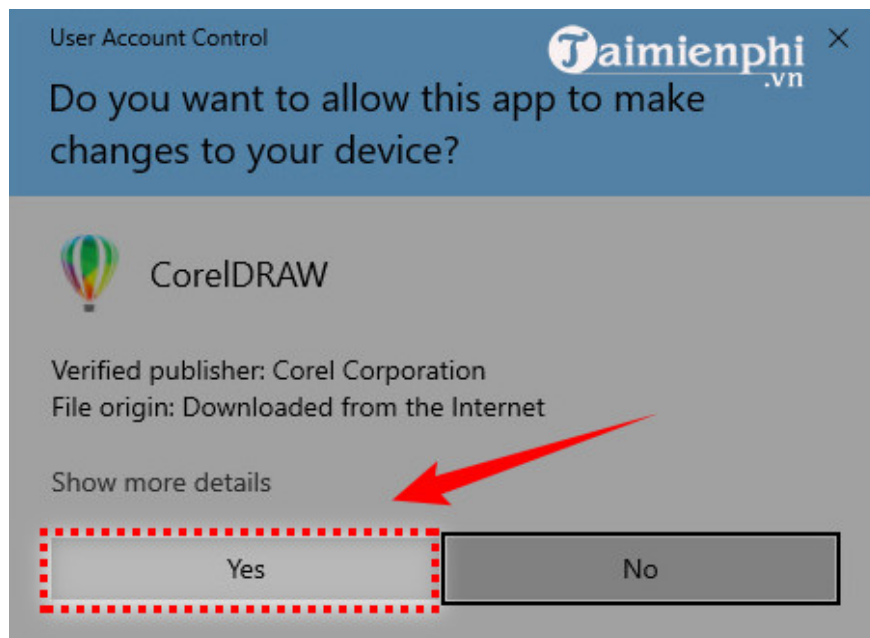
CorelDraw is known as professional design software and is also a major competitor to Illustrator, a professional design software from Adobe's suite. Those new to graphic design often wonder whether they should install and use CorelDraw or replace it with Adobe Illustrator.



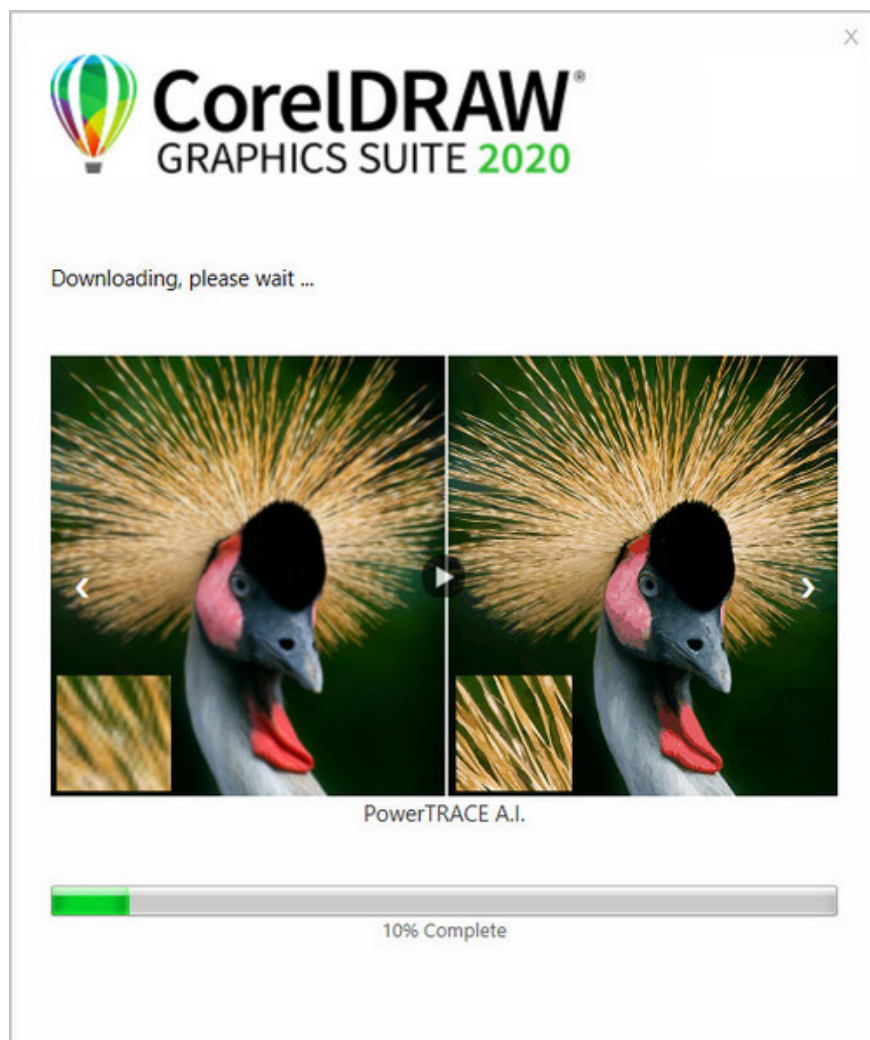
Of course, in terms of features, these two software programs are quite similar. However, Illustrator has a huge advantage because it's supported by other software like Lightroom and Photoshop. Nevertheless, Illustrator is a great program, and if possible, you should install it on your computer. Installing Illustrator won't take up too much of your time.

Step 1: First, download **the latest version of CorelDRAW** here, and then we will proceed to install this software on your computer.

Step 2 : Select **Yes** to continue.



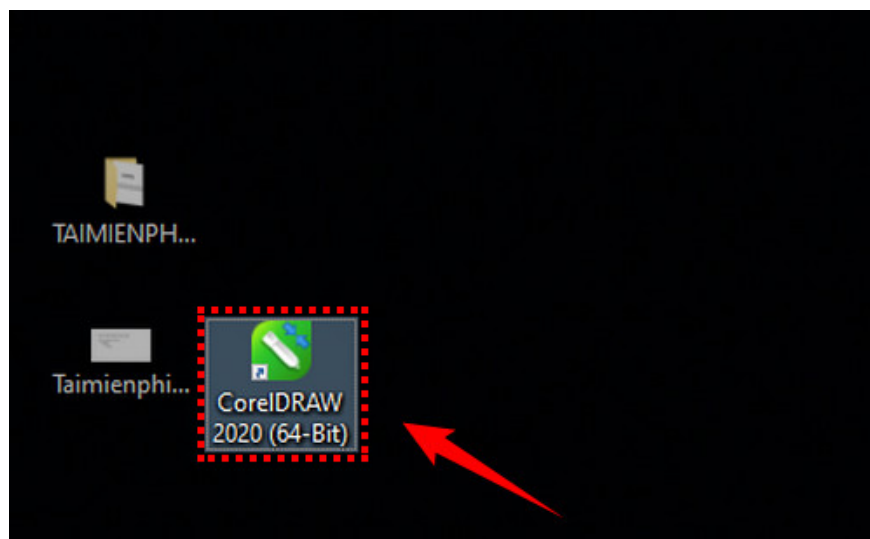
Step 3 : The software will then download automatically, and you must wait a few minutes until this stage is complete.



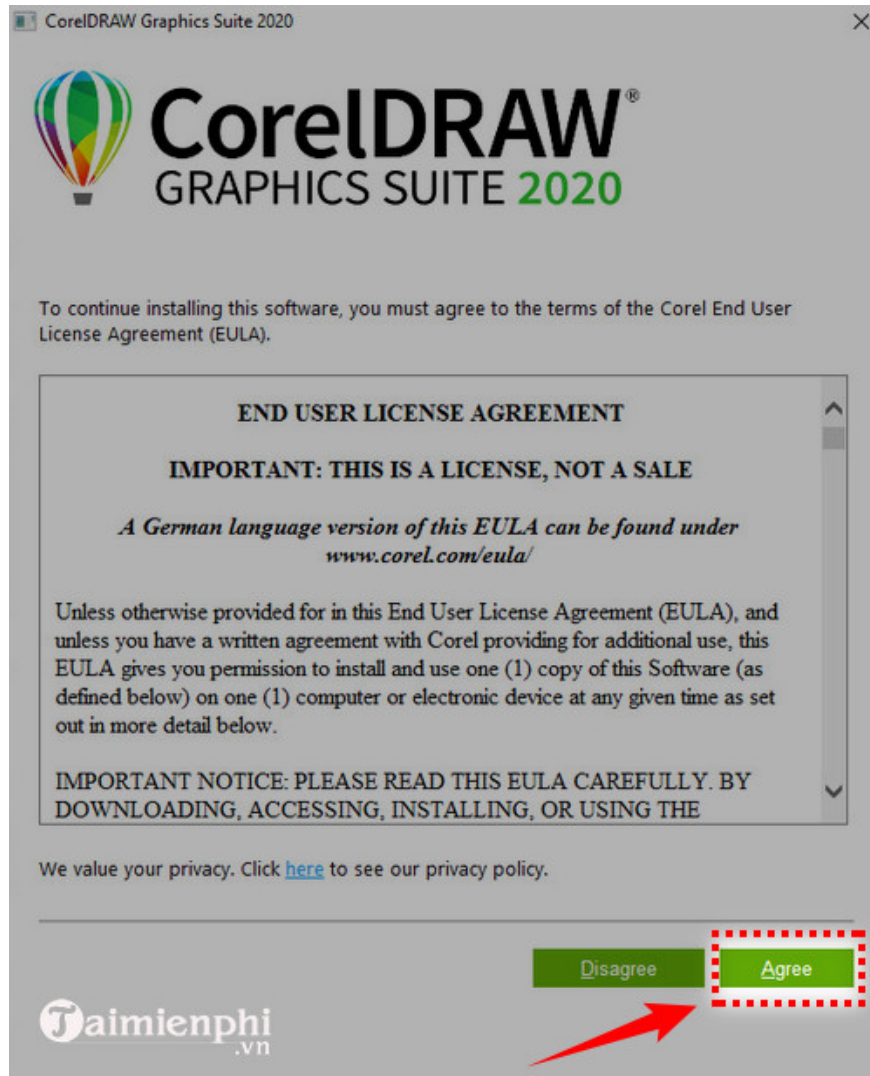
This is the notification that appears after the installation process is complete.



Step 4 : Click on the icon on the desktop to launch the software.



Step 5 : Select **Agree** to accept CorelDraw's terms of use.



Step 6 : On your first use, you will be redirected to the account registration window. Fill in the information including:

CorelDRAW[®]
GRAPHICS SUITE 2020

Let us get to know you

Signing in gives you access to important online services and content. To sign in, enter your credentials in the fields provided. All data will be processed in accordance with our [Privacy Statement](#).

I already have an account

taimienphivn@gmail.com

•••••

•••••

United States

I consent to receiving the latest offers, product news, and other promotional material from Corel.

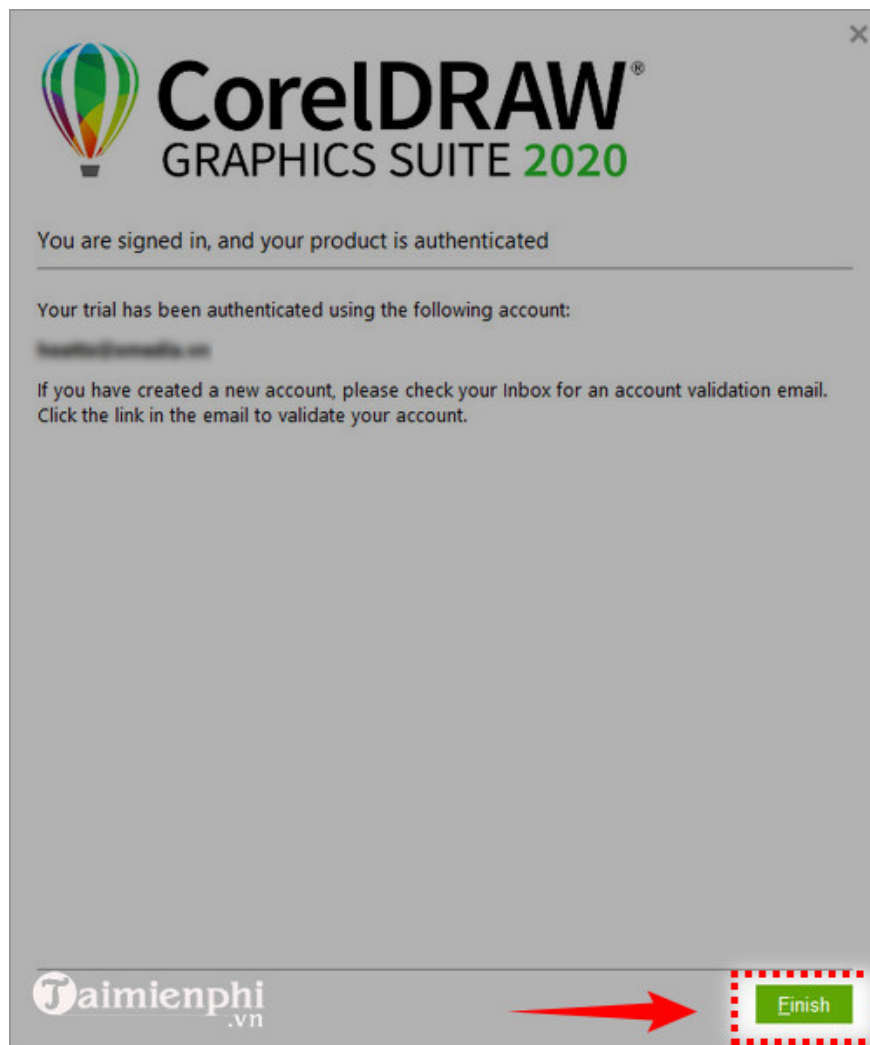
Have your say, participate in Corel research.

Already Purchased? ➔ Continue

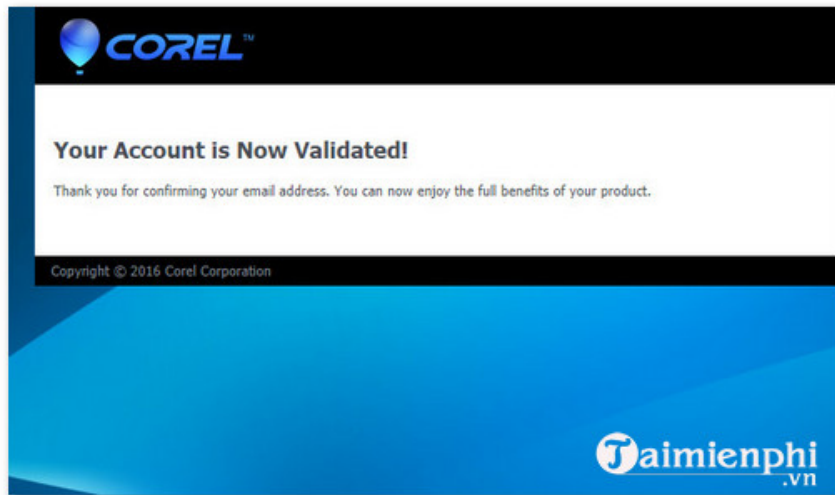
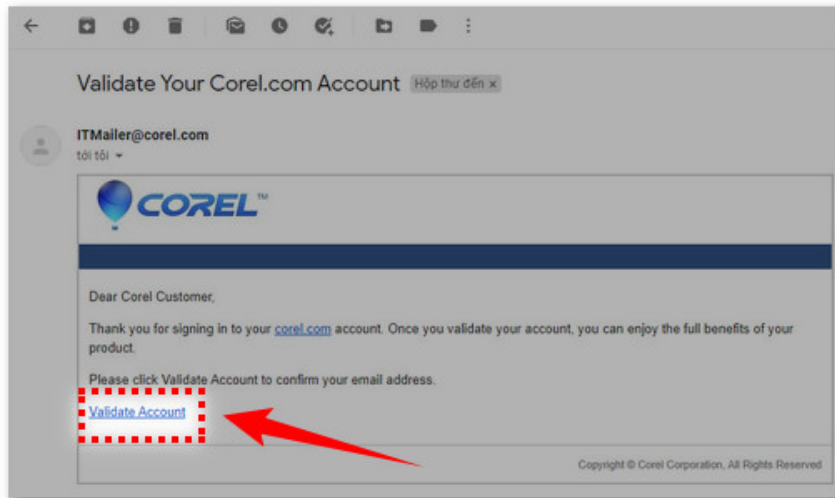
- **Email Address** : Email address for confirmation after registration
- **Password** : Password for your account.

Then select the language for the software. After that, click **Continue** .

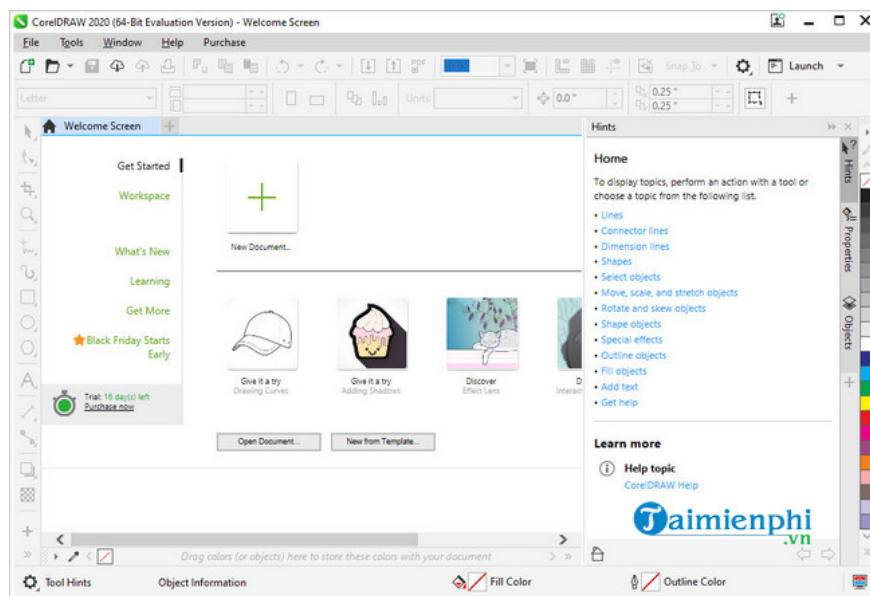
Step 7 : Click **Finish** to complete.



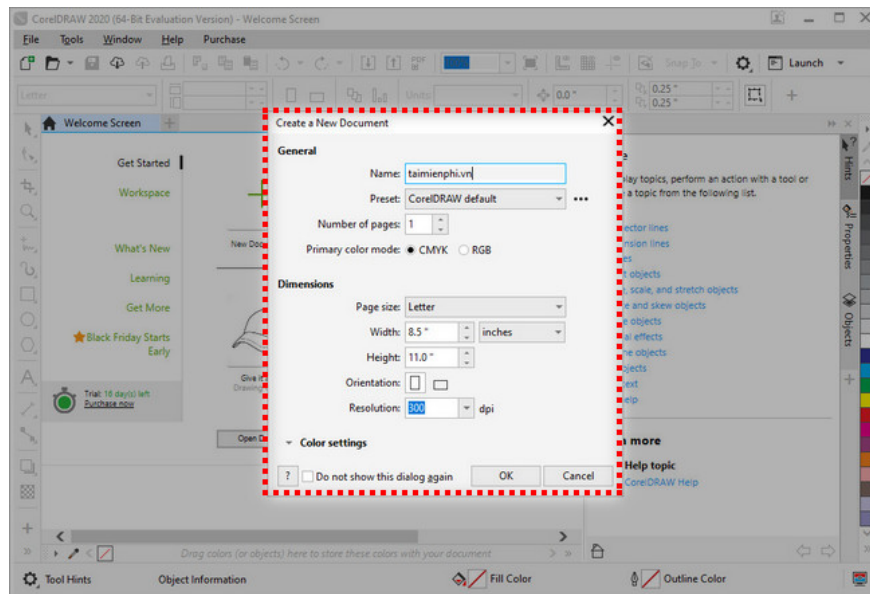
Step 8 : Open your email and click on the confirmation link. You will receive a notification after your account has been successfully activated.



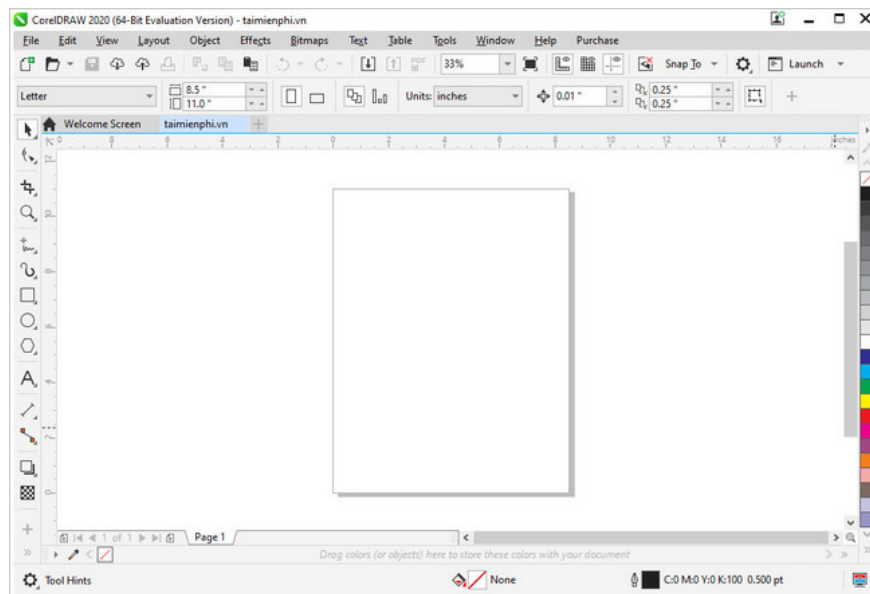
Step 9 : After activating your account, CorelDraw will launch and display the working interface as shown below.



To create a new project, click on New Document, then enter a file name in the **Name** field and click **OK** .

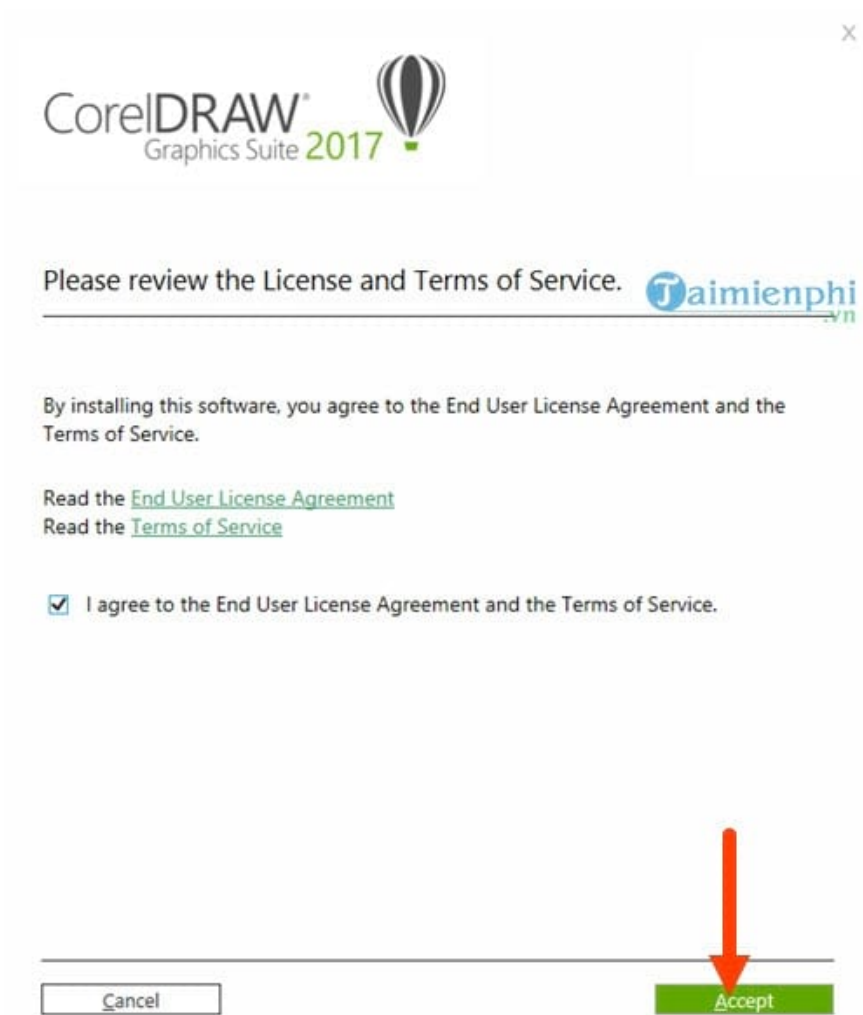


This is the CorelDraw interface with the new project you created. You can now use the software for your work.



Instructions for installing CorelDraw 2017

Step 2: When you open the Corel software, agree to the terms and conditions and click **Accept** .



Step 3: The software will then download automatically, and you must wait until this stage is complete.

CorelDRAW[®]
Graphics Suite 2017



Taimienphi .vn x


Downloading, please wait ...




Rogelio Hernandez Garcia

0% Complete

Step 4: Then, enter your name and continue the installation by clicking **Next** .

CorelDRAW[®] Graphics Suite 2017 

Type your full name and serial number. 

Full Name:

Serial Number:

If you downloaded your product from www.corel.com or registered it online, you can find your serial number within your Corel account. If you purchased a boxed version of the software, you can typically find your serial number on the disc holder. If you still need help locating your serial number, visit www.corel.com/installcenter.

Step 5: Then select **Custom Installation** to customize the settings when installing Corel.

Choose an installation option.






 **Typical Installation**
This option installs the software at the default location and includes most programs and options.
Size of installation: 1.02 GB (61.11 GB are available)

 **Custom Installation ...** 
This option lets you choose how the software is installed.



Step 6: CorelDraw comes **with 4 applications** ; you can install all of them and explore them later. These are all software tools that assist CorelDraw.

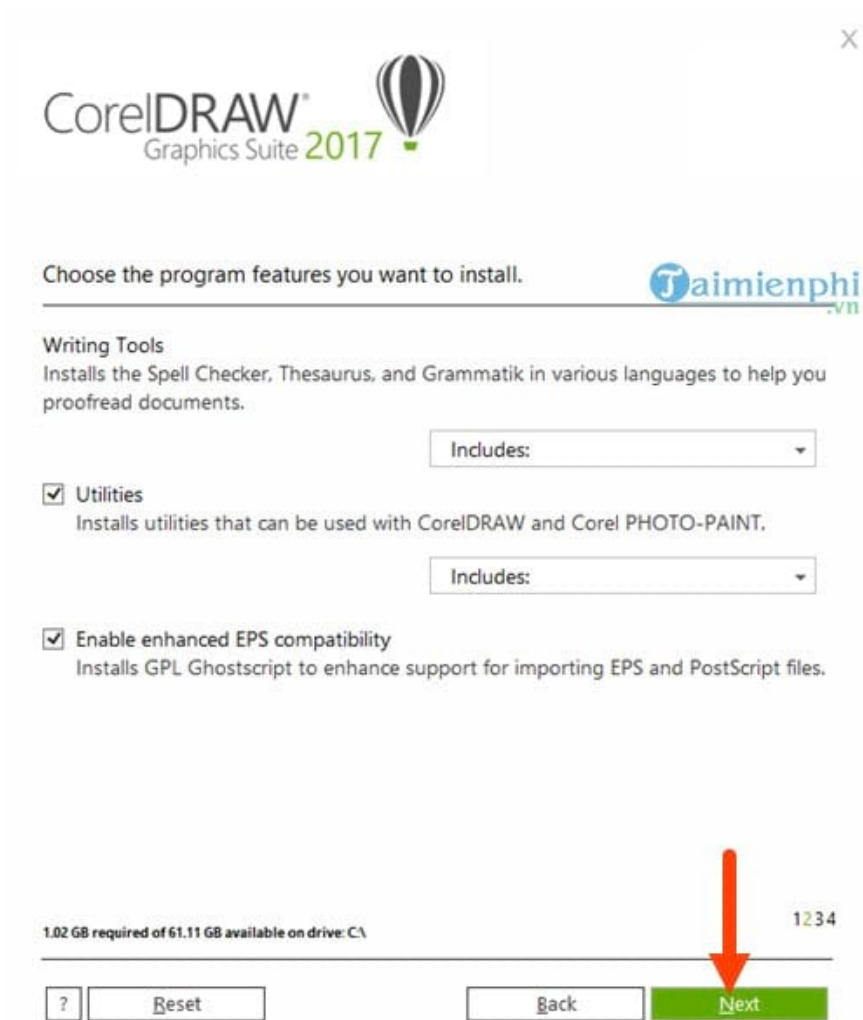
Choose the programs that you want to install.

-  CorelDRAW | vector illustration and page layout
-  Corel PHOTO-PAINT | bitmap illustration and photo-editing
-  Corel CONNECT | content finder and manager
-  Corel CAPTURE | advanced screen-capturing
-  Corel Font Manager | font manager

1.02 GB required of 61.11 GB available on drive: C:\

1234

Step 7: This step involves installing additional software, so simply leave everything as is and click Next to continue installing Corel.



Step 8: Next, the system will ask if you want to **create a desktop copy** . The choice to install Corel is up to you, but continue by clicking **Next** in the next step.

Choose additional options.

- Install Desktop shortcuts
Installs shortcuts for the programs to your desktop.

1.02 GB required of 61.11 GB available on drive: C:\

1234

? Reset

Back

Next

Step 9: Finally, choose the installation path for the software and click "**Install now**" to install it.



Step 10: After the installation is complete, you will be asked to create an account; account creation will happen immediately.

Let us get to know you

Signing in gives you access to important online services and content. To sign in, create your Corel account now. If you already have an account, enable the check box and enter your credentials in the fields provided.

I already have an account

taimienphivn2018@gmail.com	
••••••••	
••••••••	
Viet Nam	▼

Get critical software updates and exclusive offers.

Have your say, participate in Corel research.

[Privacy policy](#). All information is confidential and will not be shared with any 3rd party.

Already Purchased?

Continue



Step 12: Check your email address to confirm before clicking **Continue** .



You are signed in, and your product is authenticated



Your trial has been authenticated using the following account:

taimienphivn2018@gmail.com

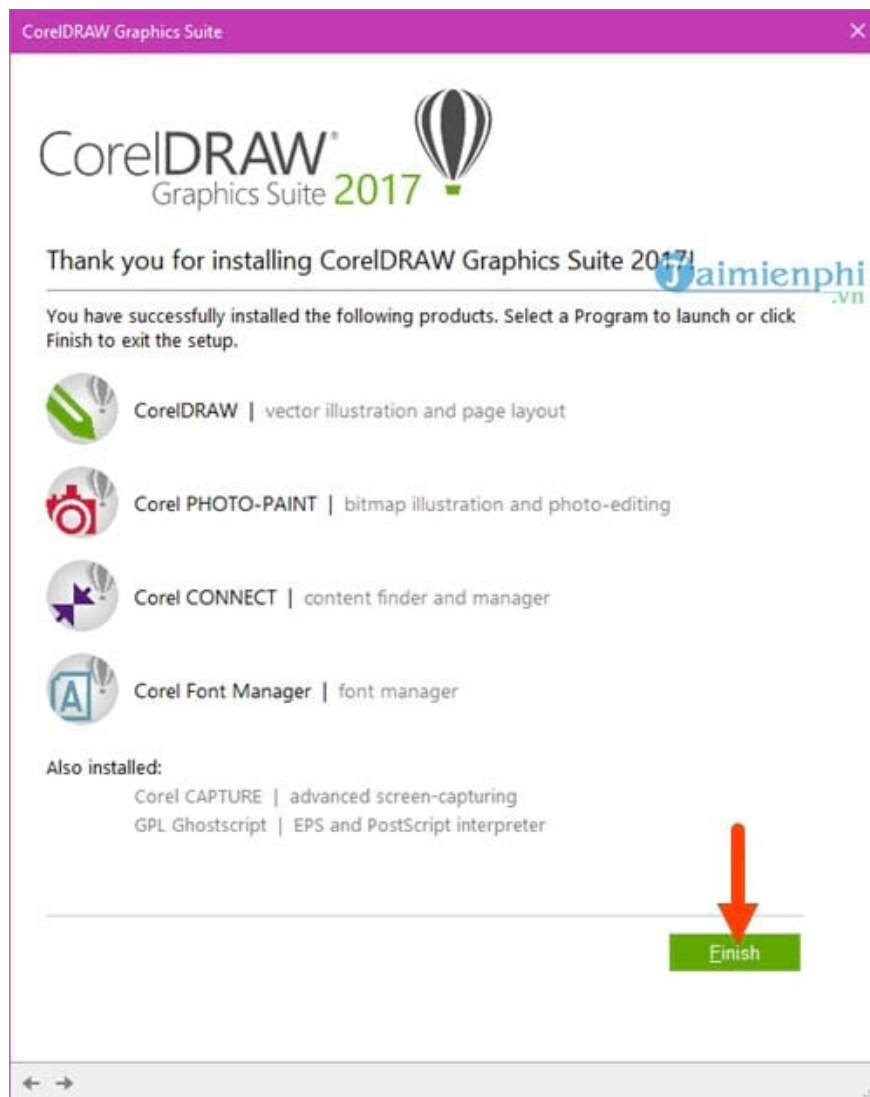
Do you own an earlier version of CorelDRAW Graphics Suite?

You may be entitled to a full version of CorelDRAW Graphics Suite 2017 if you are a subscriber or have the Upgrade Program (Premium Membership). [Find out more online.](#)

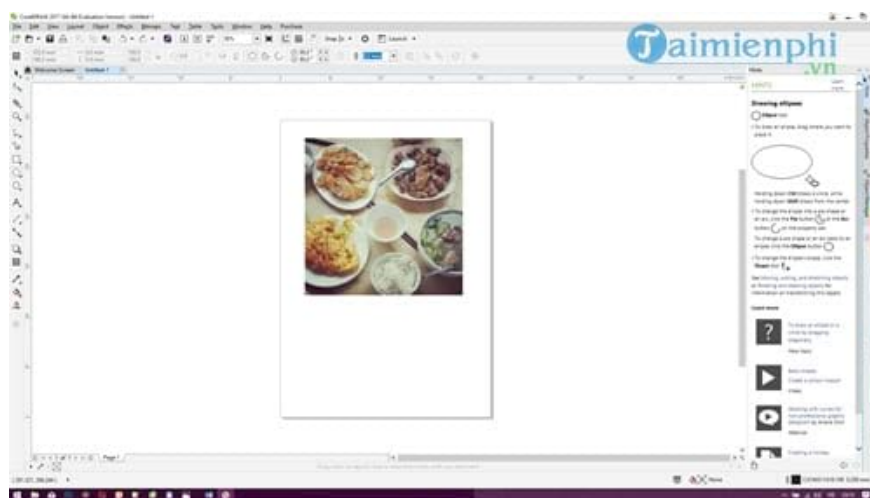


Continue

Step 13: Everything is done, now click **Finish** to complete the Corel installation.



Now we can freely design with CorelDraw!



Above is a guide on installing and using Corel, a professional image design software for designers. You don't necessarily need to be a design expert, but CorelDraw is sufficient for performing basic design tasks. Additionally, you can refer to how to fix Corel x7 and x6 license issues [here](#).

Besides design, post-processing of images is very important, and Lightroom is one of the few software programs that helps you do this. Therefore, in addition to installing Corel, you can also install Lightroom on your computer; installing Lightroom will bring you many benefits when editing images in post-processing.

You finished reading the article "**Install and use Corel, design professional images with CorelDraw.**" edited by the [TipsMake](#) team. We hope this article has provided you with many useful tech tips and tricks. You can search for similar articles on tips and guides. Thank you for reading and for following us regularly.