

# Install and configure Windows Live Mail on Windows 10

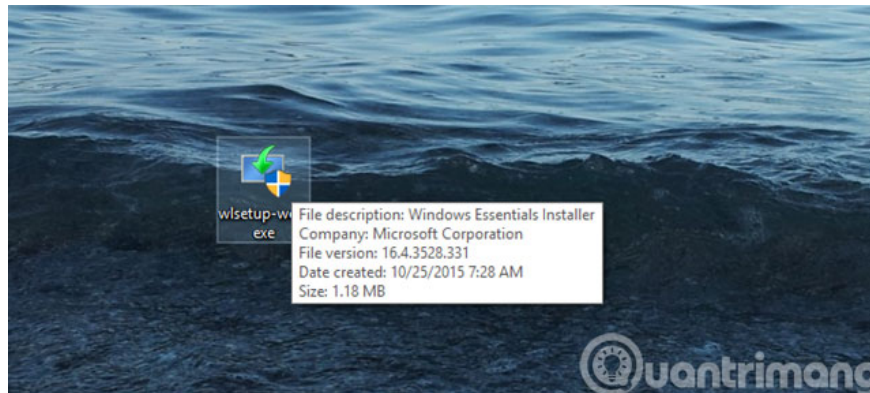
Although Windows 10 has built-in Mail application to manage personal email, it seems that users are not very interested in this application. Instead, they often manage email by visiting email service websites or using other mail browsers.

Although **Windows 10** has built-in Mail application to manage personal email, it seems that users are not "salty" with this application. Instead, they often manage email by visiting email service websites or using other mail browsers.

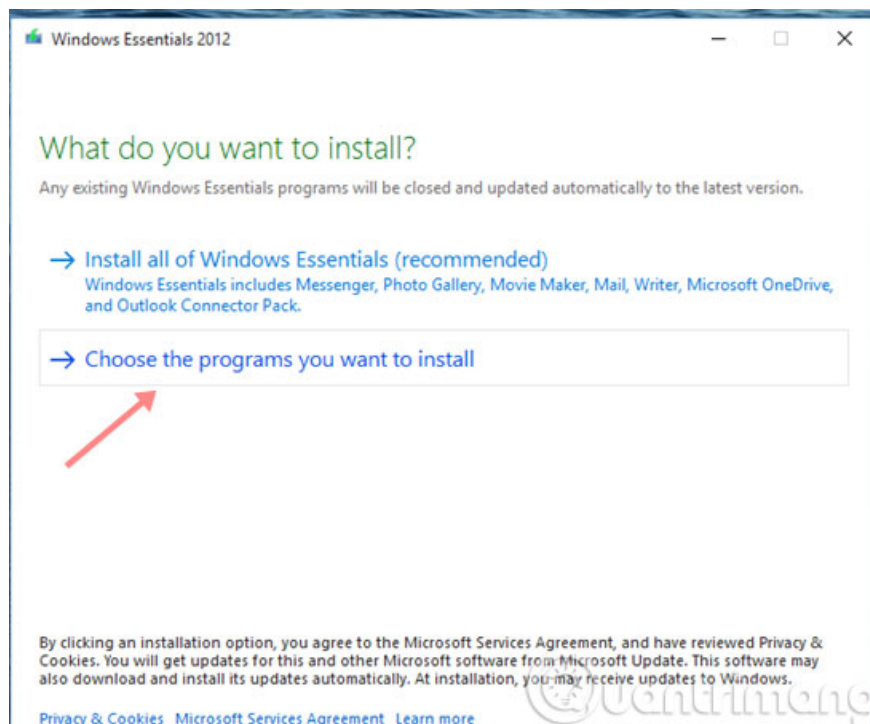
In the article below, we will guide you to install as well as configure to be able to use Windows Live Mail 2012 as the default email browser on your computer.

## Install Windows Live Mail

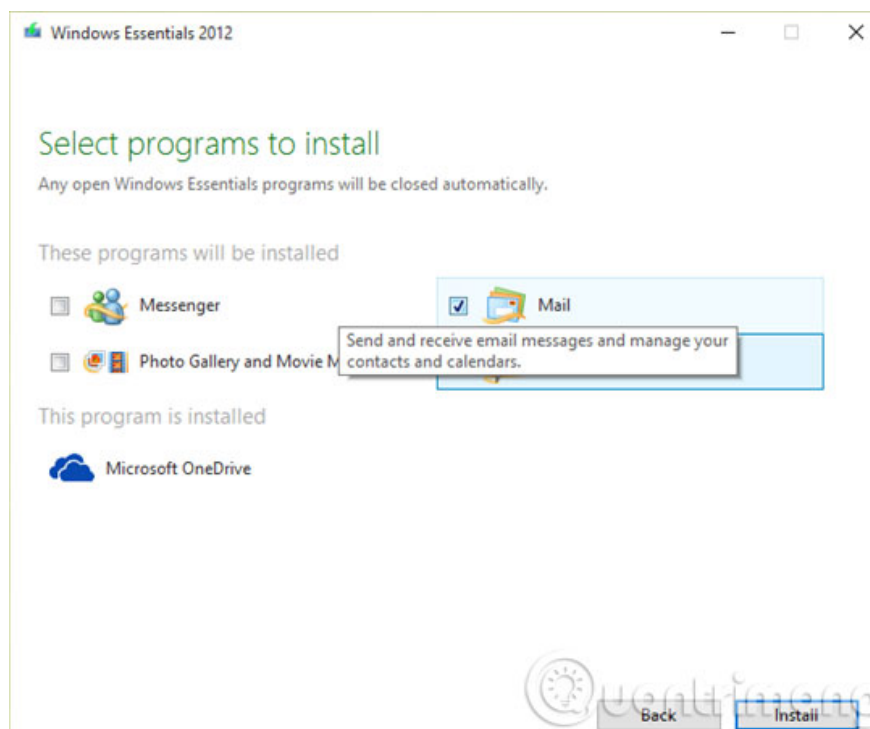
First, download the installation file machine with a capacity of less than 2MB and can be used on both 32bit and 64bit Windows versions.



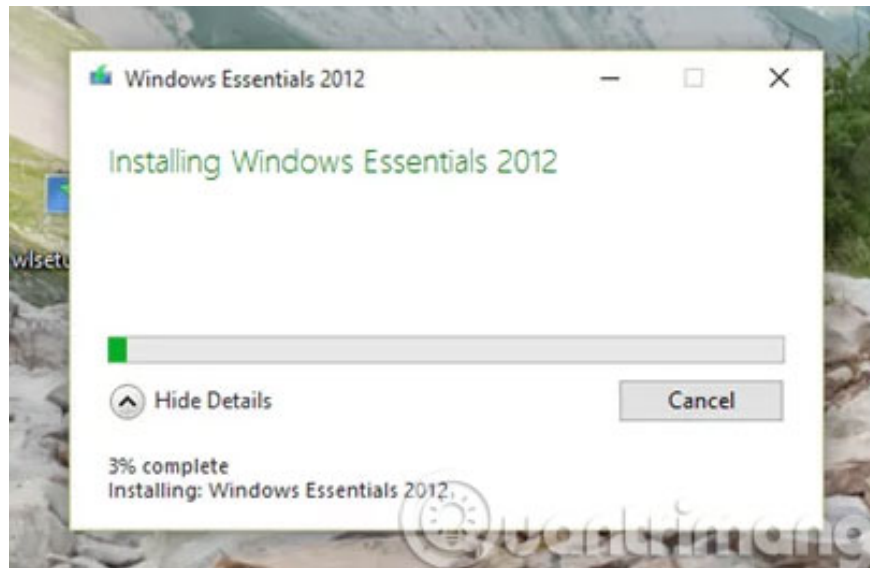
After the download is complete, double click the mouse to launch it. On the first selection screen, click the option **Choose the programs you want to install** .



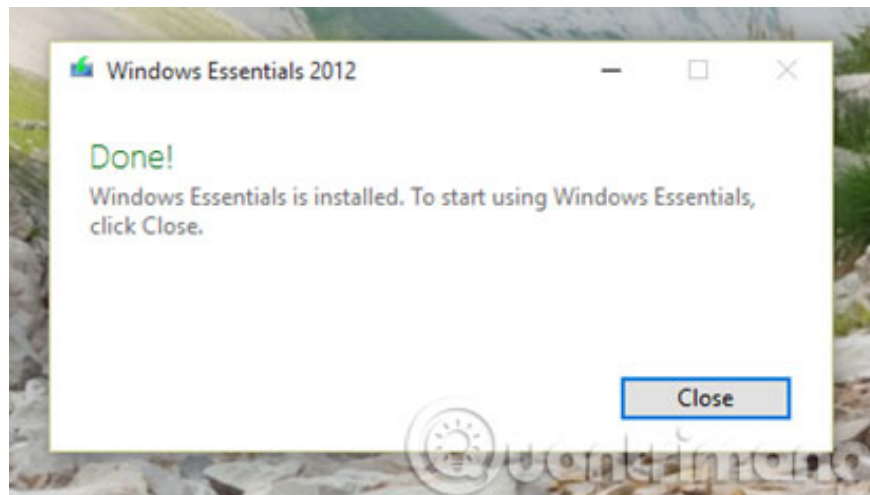
Here, we only use Windows Live Mail so you just need to check the **Mail** box



The download and installation of Windows Live Mail will begin.

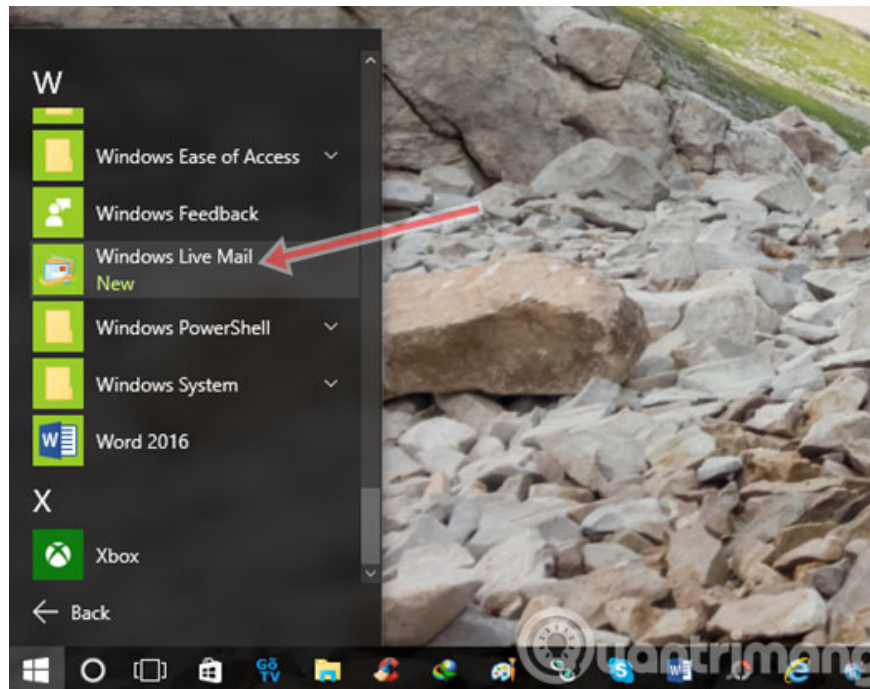


After the installation process is complete, click **Close** to close the reinstatement dialog box.



## Windows Live Mail configuration

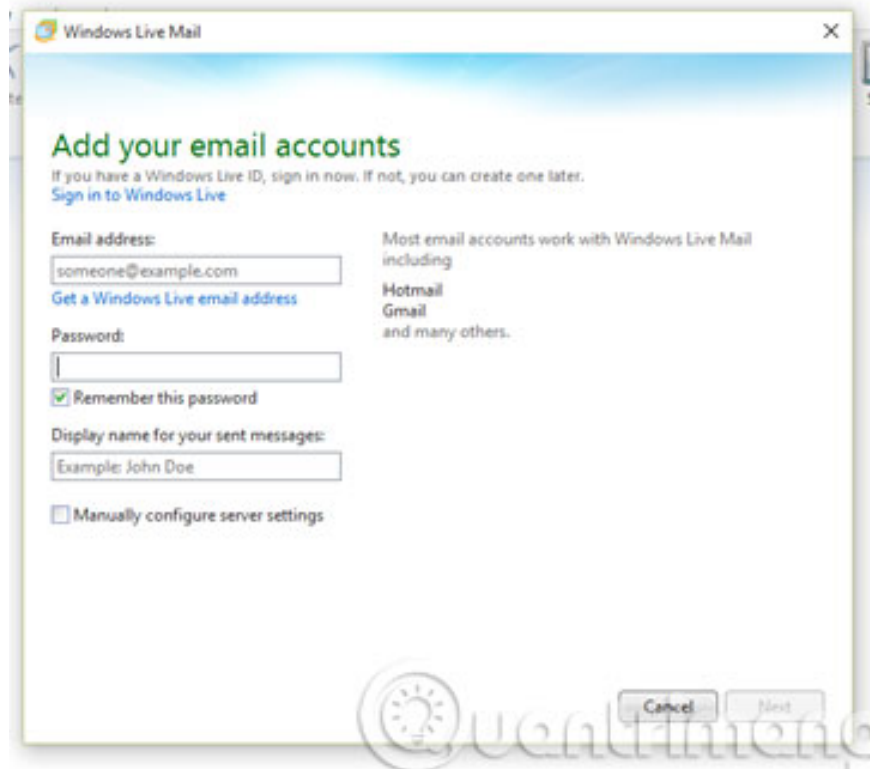
Go to the Windows Live Mail icon from the Start Menu or enter a name in the search box to launch the software.



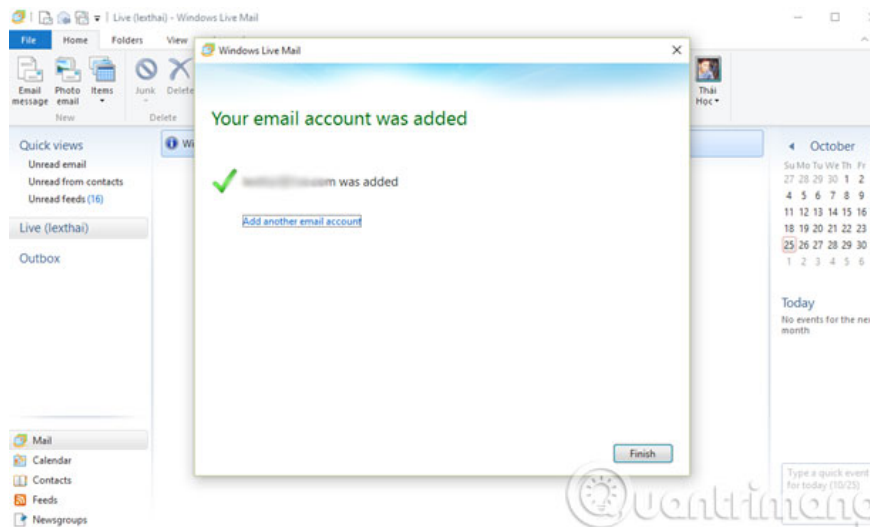
The first time you use it, a window displaying the terms will appear, press **Accept** to confirm and continue.



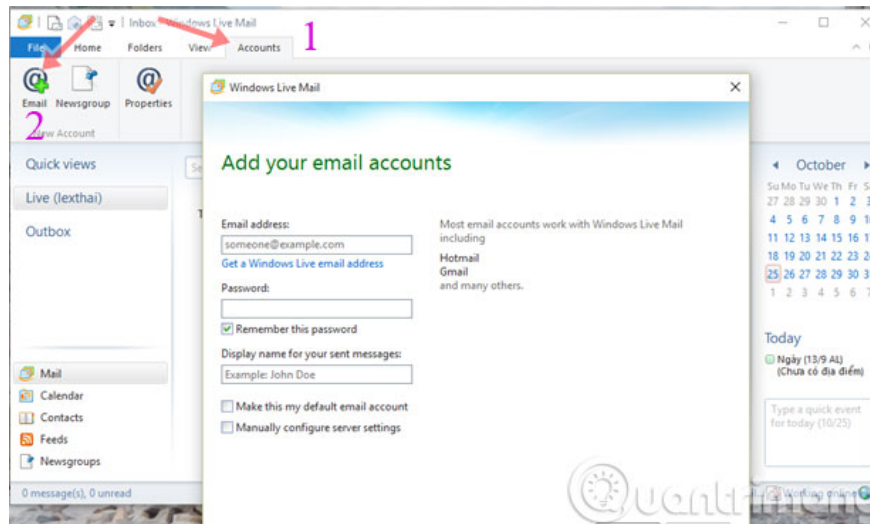
The dialog box for adding an email account will automatically be turned on as soon as you access the main interface of Windows Live Mail. You add an account and then click **Next** to move on to the next step.



When you have finished adding the account, you will receive your **account email account added** .



To add another email account, click on the **Accounts** tab and click the **Email** icon. Then configure the same as above.



1. Restore the lost Windows Live / Hotmail account password
2. Instructions for exporting Windows Live Mail to Outlook 2010
3. How to backup and restore data on Windows Live Mail?

**Good luck!**

You finished reading the article "**Install and configure Windows Live Mail on Windows 10**" edited by the [TipsMake](#) team. We hope this article has provided you with many useful tech tips and tricks. You can search for similar articles on tips and guides. Thank you for reading and for following us regularly.