

Install a webcam for your computer and the simplest way to use it

Join TipsMake to discover the simplest and most effective ways to install a webcam for your computer at home.

With the popularity of online meeting software and the need for remote communication, webcams have gradually become an indispensable assistant for most computer users. Therefore, in the following article, let's join TipsMake to learn the simplest ways to install a webcam and use this tool effectively.

Instructions on how to install a webcam for your computer

To install a webcam for your computer, users can apply one of the following methods:

Install using software

To use the webcam, you first need to install the webcam driver on your computer. This driver may be provided on the CD included with the webcam, or you can search and download the driver online.

Use the CD to install

If your computer is equipped with a drive, you can insert the CD containing the webcam driver into the computer. The Windows operating system will immediately recognize and launch a wizard to help you during the webcam software installation process.

However, if the wizard does not start automatically, users can still install the webcam software by accessing the Windows taskbar and selecting File Explorer (on Windows 10) or My Computer (on Windows versions). older). Then search for the keyword ' This PC ' to access the CD drive (usually E:) . Here, you can install software and webcam-related files.

Picture 1 of Install a webcam for your computer and the simplest way to use it

In case there is no CD to install the webcam

In some special cases, hardware devices, including webcams, do not have driver disks. This can come from many different reasons, but the most important thing is that the Windows operating system has the ability to automatically identify and install hardware devices without the need for supporting software.

When you plug the webcam (not included with the software disc) into your computer, the Windows operating system will confirm that it is new hardware and the user can use the webcam without having to download any

additional software. If Windows does not recognize the webcam, you will be instructed on how to search for drivers online or on your computer to install the webcam.

To manually search for webcam drivers, use the **Windows Update** tool . First, go to the **Search page and search for the Device Manager** application . **In the Device Manager** window , select **Cameras or Imaging Devices** , then right-click on the webcam and select **Update driver** .

If Windows cannot find a driver for your webcam, you can read the user manual or visit the manufacturer's website to search for the latest driver software. Nowadays, as installation discs become less common, many webcam manufacturers also provide online drivers for users.

Picture 2 of Install a webcam for your computer and the simplest way to use it

Find connection via USB, Type C,. port of the webcam

Normally, webcams will be connected to the computer via USB or similar ports. To find the location of the USB port on your computer, you can look on the front or back of the computer. It is a small rectangle and is accompanied by a USB symbol.

After you have plugged the webcam into your computer, the Windows system will automatically open the pre-installed software. Or you can find and open the webcam software yourself from the **Start** menu .

Picture 3 of Install a webcam for your computer and the simplest way to use it

Place the webcam on a flat surface

To use the webcam effectively when recording video or taking photos, users can apply a few small tricks. For example, place the webcam on a flat surface to ensure images and videos are not distorted or skewed. If you want to record video of an object that's not directly in front of the screen, use a stack of books or a tripod to align the webcam.

Picture 4 of Install a webcam for your computer and the simplest way to use it

Find the right clamp to secure the webcam to the screen

Currently, depending on the design and model, some webcams will be sold with convenient clips. Users can use them to permanently attach a webcam to the screen above and record yourself looking at the screen. This is especially useful when you want to create a webcast, record conversations with relatives and friends, or create a video diary.

Picture 5 of Install a webcam for your computer and the simplest way to use it

Ways to check webcam activity

How to check webcam activity will depend on the operating system your computer is using.

For windows operating system

If your computer is running Windows 7, 8, 10, or 11, you can check if your webcam settings are working by using the Camera app on your computer. To open the Camera app, follow these steps:

1. **Step 1** : Click the **Start** menu icon to open the search bar.
2. **Step 2**: Enter the keyword ' **Camera** ' or ' **Camera** '.

Picture 6 of Install a webcam for your computer and the simplest way to use it

1. **Step 3**: Click on the Camera application in the search results
2. **Step 4**: When the Camera app opens, your live video will appear on the screen. You can align the webcam to make sure your face is in the center of the video screen.

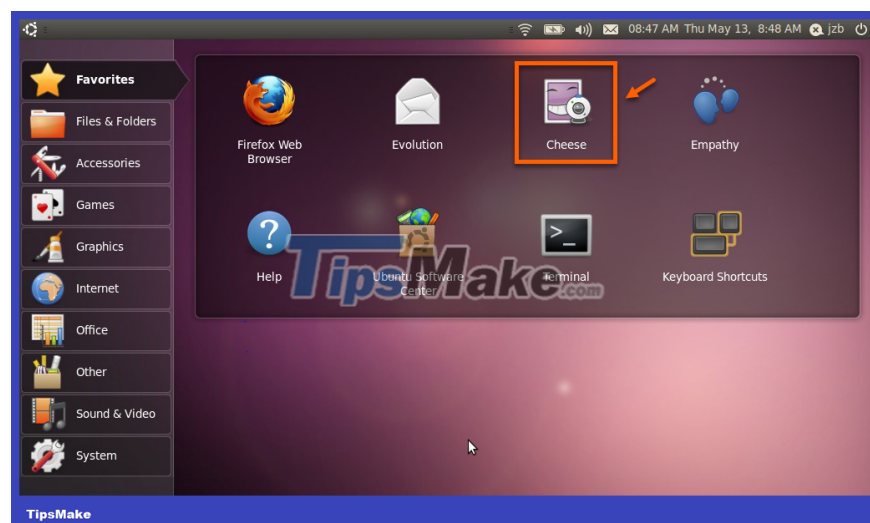
For computers running macOS

To check the webcam settings on a computer running macOS, you can use the Photobooth application. This is a default application on the macOS operating system, located in the Applications folder. Once you open the app, you can use your computer's built-in webcam to take photos or record videos.

Picture 7 of Install a webcam for your computer and the simplest way to use it

For Linux operating system

To test your webcam on a computer running the Linux operating system, users can use the Cheese utility. This utility is available in most Linux managers.



How to best use webcams

After connecting and installing a webcam on your computer, you can use it to display your own video on online meeting software and services such as Microsoft Teams, Google Meet, Skype, Webex and Zoom.

Picture 9 of Install a webcam for your computer and the simplest way to use it

To turn on the webcam and enable live video sharing, just click on the video camera icon on its interface. Depending on your online meeting software or service, your video may be shared immediately or show a preview before sharing begins. If a preview is displayed, you can tap ' **Start Video** ' or similar option to start sharing live video with online meeting participants.

Does the laptop have a built-in webcam?

Laptops today are often equipped with webcams integrated into the screen, this helps reduce the size of the device and increase portability. The webcam is placed in the middle of the top edge of the screen, usually less than 1.5 cm in size and circular or square in shape.

However, built-in webcams are often not as good quality as external webcams. Therefore, if you want to improve image quality, most users will choose to add a separate webcam to their computer. However, because laptop screens often have a thin design, mounting an external webcam on the screen can be a bit difficult. This may cause unstable webcam operation.

Picture 10 of Install a webcam for your computer and the simplest way to use it

Epilogue

Just follow the instructions above when installing the webcam, you can quickly set up the webcam and use this tool to chat with family, friends or participate in online meetings. Hope you are successful.

You finished reading the article "**Install a webcam for your computer and the simplest way to use it**" edited by the [TipsMake](#) team. We hope this article has provided you with many useful tech tips and tricks. You can search for similar articles on tips and guides. Thank you for reading and for following us regularly.