

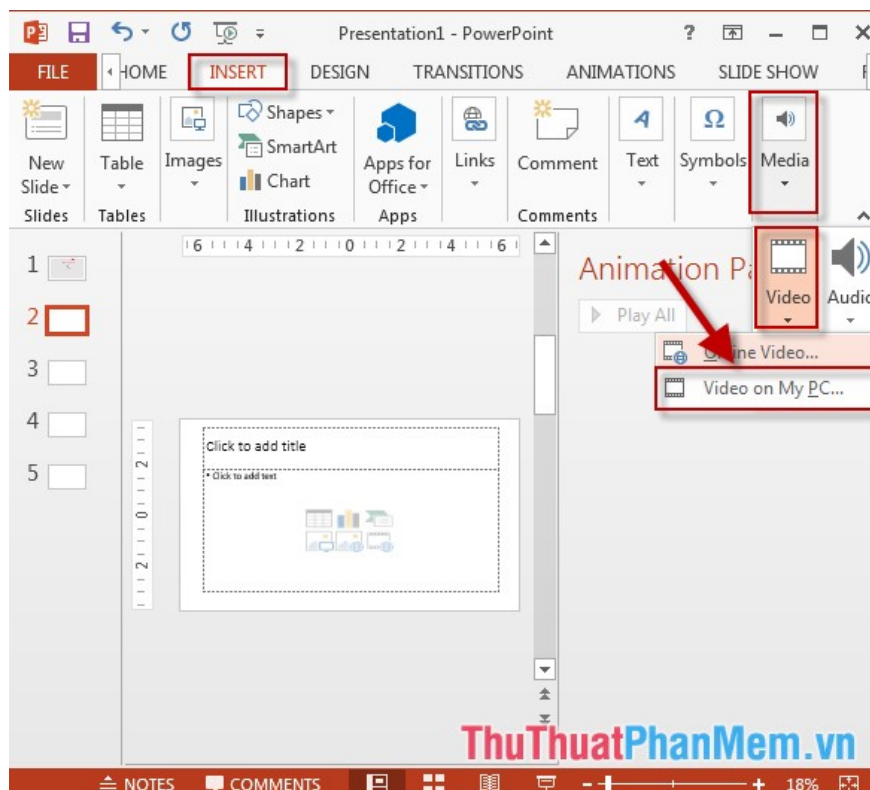
# Insert Video file into Slide in PowerPoint

Introduce how to insert a video file into a Slide in PowerPoint. 1. Insert videos available in your computer. Step 1: Go to the Insert - Media - Video - Video on My PC tab: Step 2: The dialog box appears to find the path to the file to be inserted - click Insert.

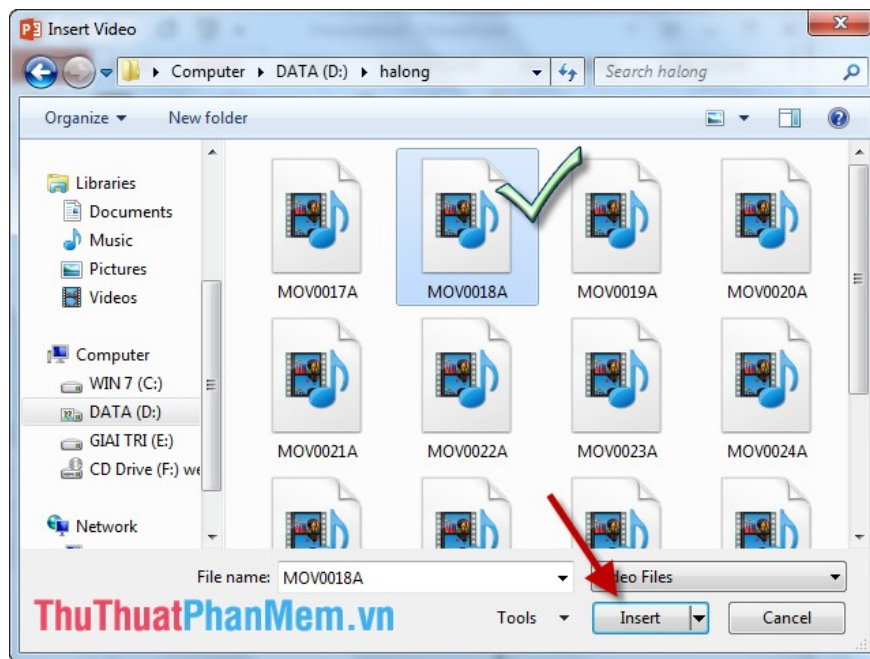
The following article introduces you in detail how to insert video files into Slide in PowerPoint.

## 1. Insert videos available in your computer.

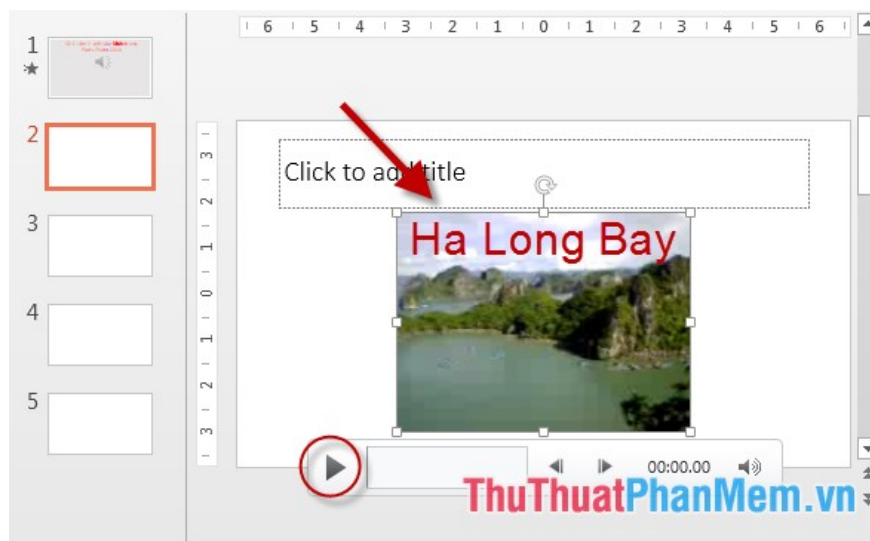
**Step 1: Go to the Insert tab -> Media -> Video -> Video on My PC:**



**Step 2: The dialog box appears to find the path to the file to be inserted -> click Insert:**

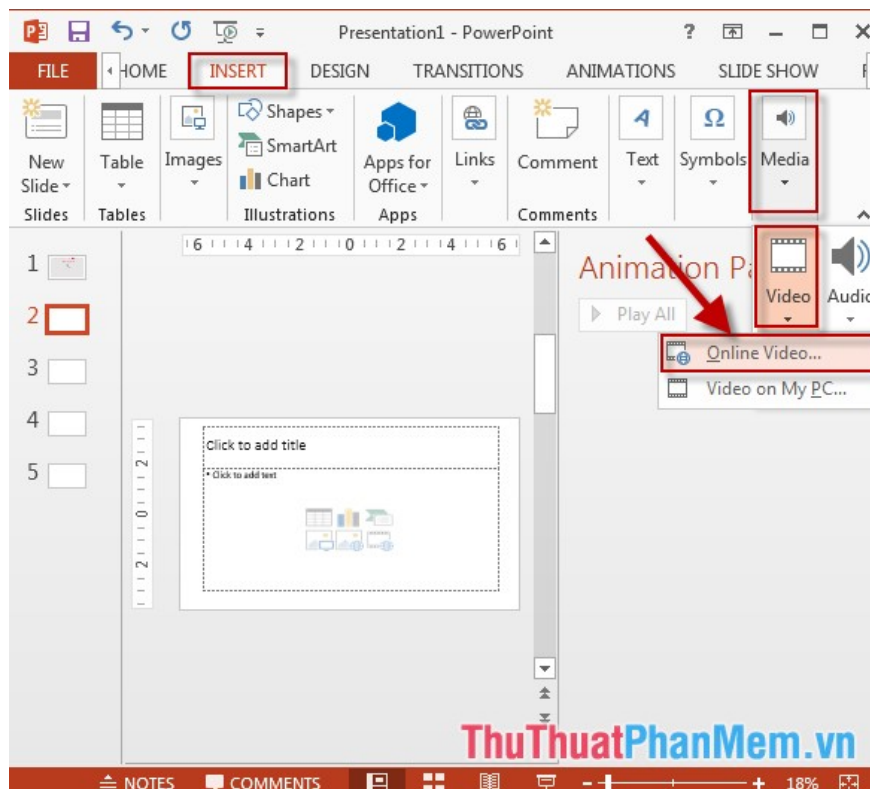


- Video results have been inserted in **Slide**:



## 2. Insert the video file to be searched online.

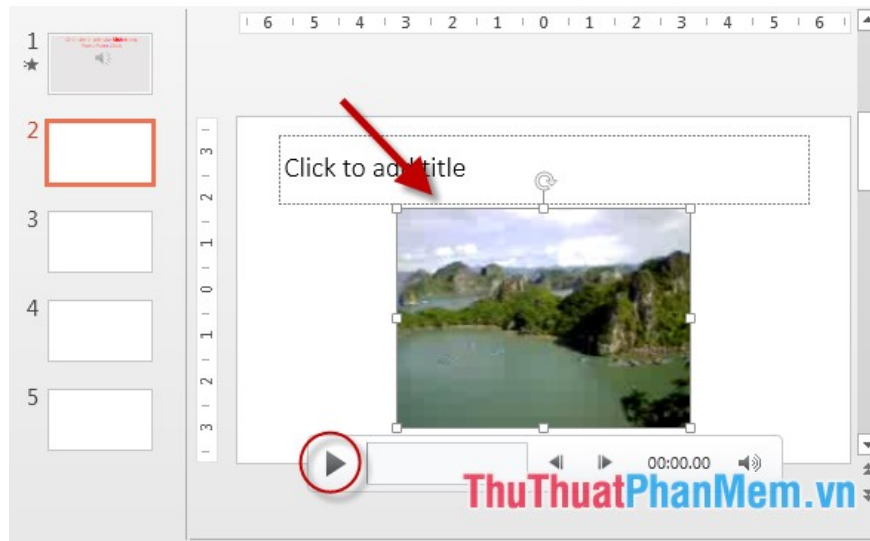
**Step 1: Go to the Insert tab -> Media -> Video -> Online Video:**



**Step 2:** A dialog box appears, enter a search term for video content -> press **Enter** -> search results appear -> select the video you want to insert -> click **Insert**:



- Video results have been inserted in **Slide**:



Also you can customize the effects, styles for inserted **videos** .

Above is a detailed guide on how to insert video files into a Slide in PowerPoint.

Good luck!

You finished reading the article "**Insert Video file into Slide in PowerPoint**" edited by the [TipsMake](#) team. We hope this article has provided you with many useful tech tips and tricks. You can search for similar articles on tips and guides. Thank you for reading and for following us regularly.