

Insert images in PowerPoint

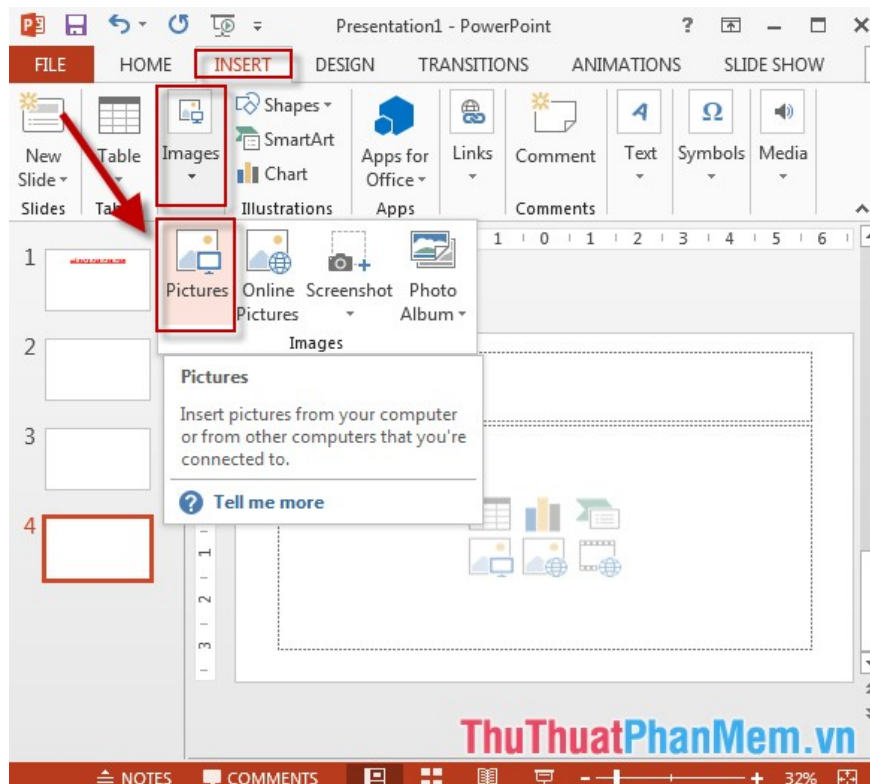
Introducing image insertion operations in PowerPoint. To use the Font dialog box, you can select the following formats: 1. Insert pictures available in the computer. Step 1: Go to the Insert - Images - Pictures tab: Step 2: The Insert Picture dialog box appears to select the image you need

The following article introduces you in detail to insert images in PowerPoint.

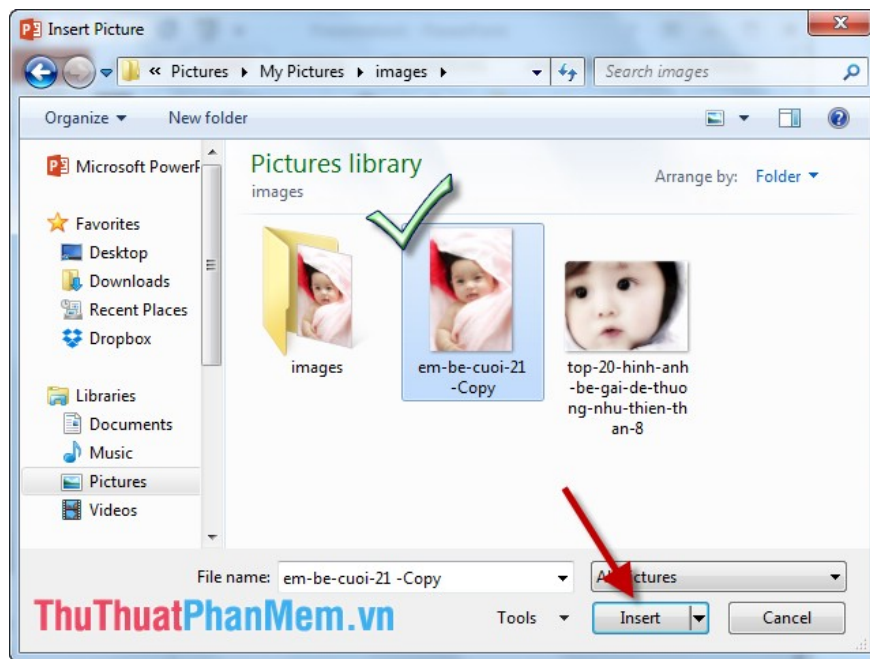
To use the Font dialog box, the following formats can be selected:

1. Insert images available in the computer.

Step 1: Go to the Insert tab -> Images -> Pictures:



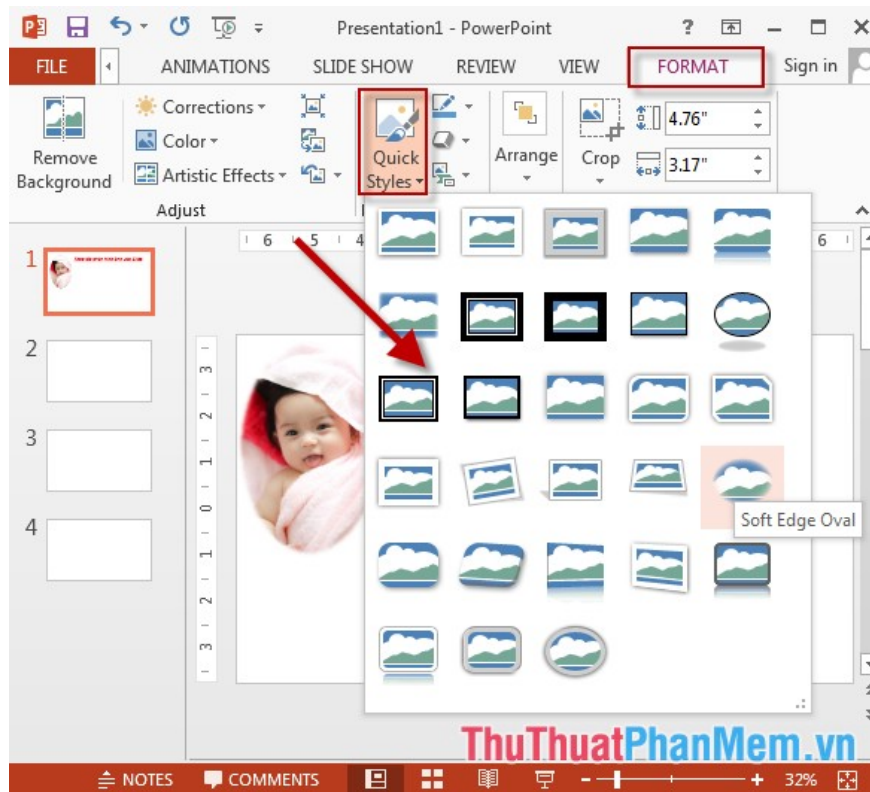
Step 2: The Insert Picture dialog box appears, select the image to be inserted -> Insert:



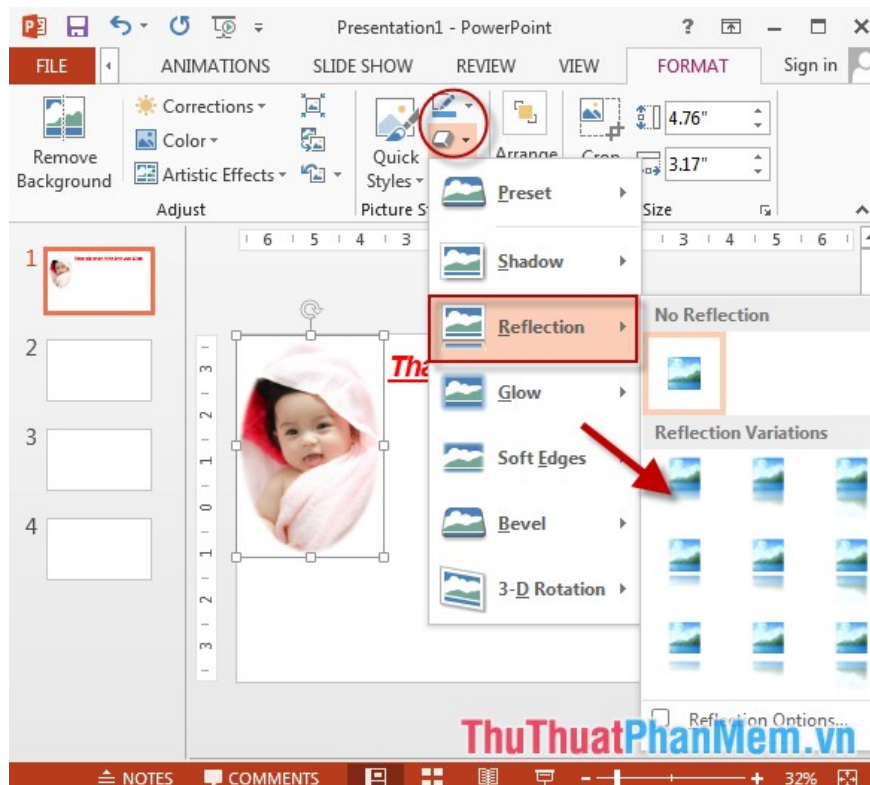
Step 3: Drag and drop the mouse and move the image to the position to insert:



Step 4: Select the style for the image -> go to **Format** tab -> **Quick Styles** -> choose the display style for the image:



Step 5: On tag **Format** -> **Pictures Effect** -> choice of photo effects:

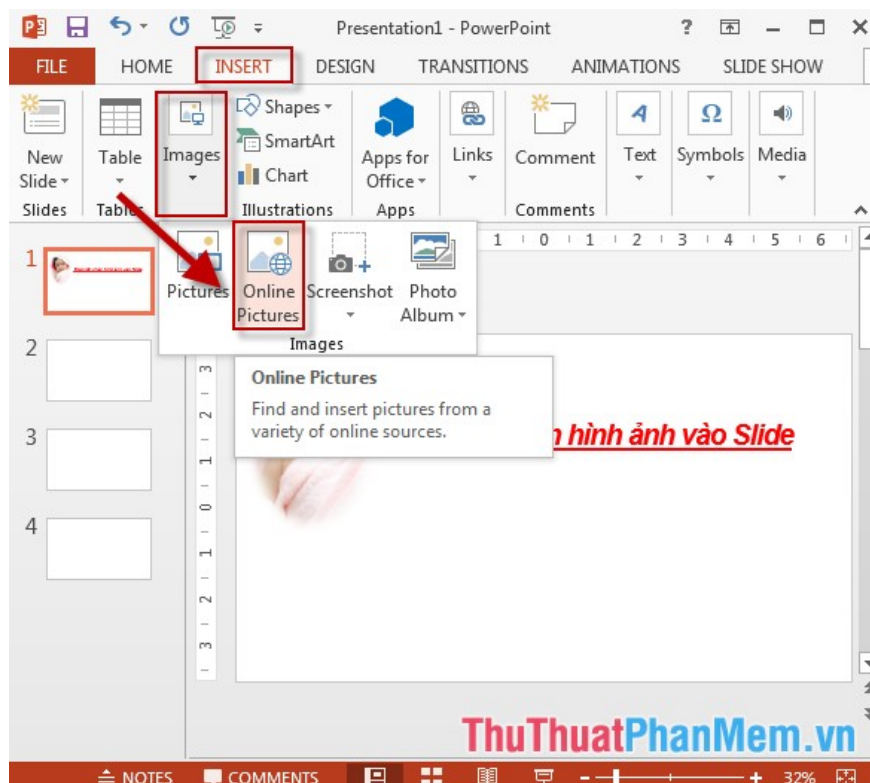


- Inserted image results:

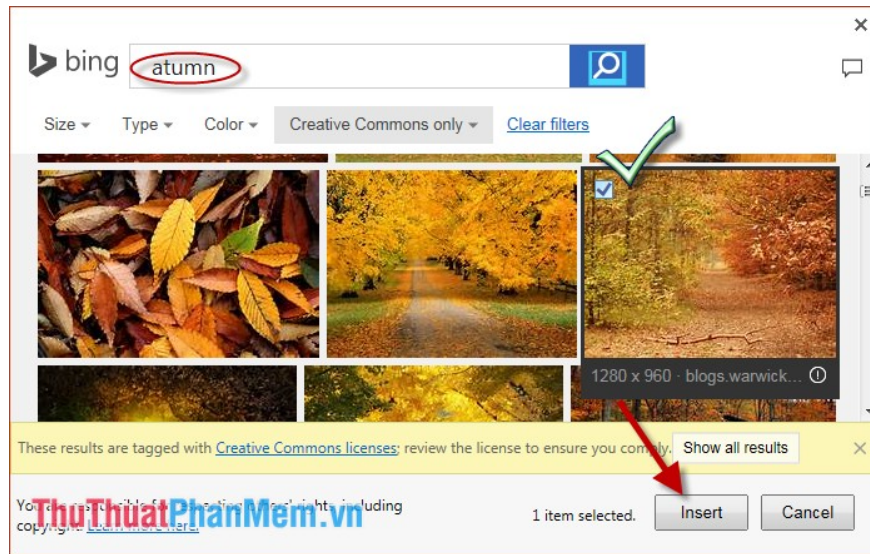


2. Insert images online.

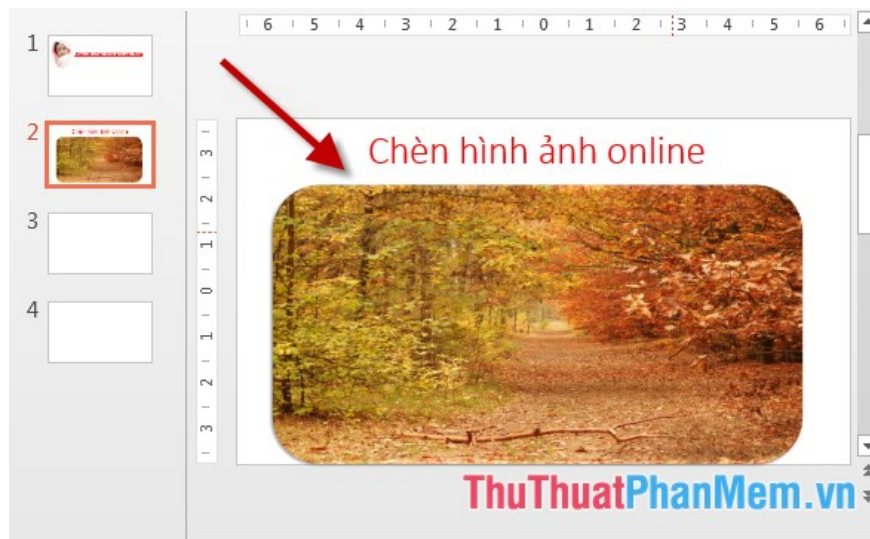
Step 1: On the Insert -> Online Pictures:



Step 2: Enter a search term for the image -> press **Enter** -> search results displayed -> select the image to insert -> **Insert:**



Step 3: Similar to inserting available images in your device, select the type and effects for your photos -> results:



Above is a detailed guide for inserting images in PowerPoint.

Good luck!

You finished reading the article "**Insert images in PowerPoint**" edited by the [TipsMake](#) team. We hope this article has provided you with many useful tech tips and tricks. You can search for similar articles on tips and guides. Thank you for reading and for following us regularly.