

Increase fps lol - How to increase the legendary League of FPS game to play smoothly on low-profile machines

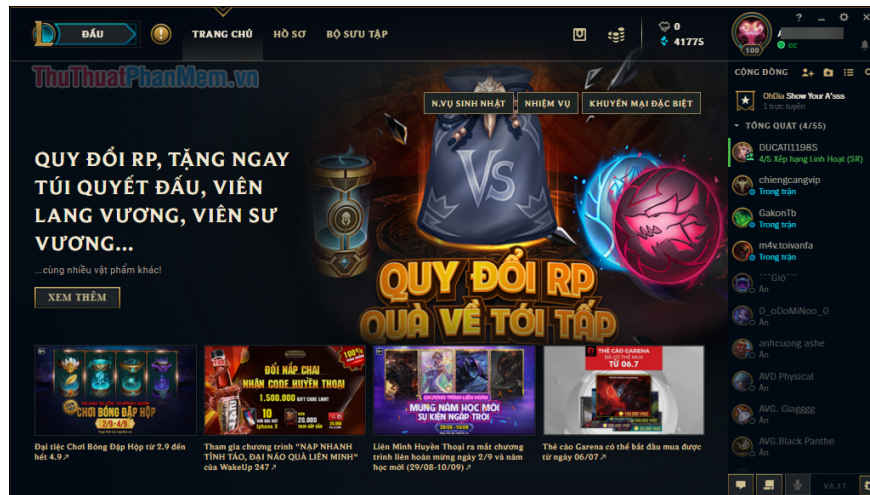
Increase fps lol - How to increase the legendary League of FPS game to play smoothly on low-profile machines. TipsMake.com will guide you to customize some in-game settings so that you can increase FPS and play LOL more smoothly on low-profile devices. Invite the contacts

If you are a gamer, it is certainly not strange with the game League of Legends or also abbreviated with the English name LOL (League of Legends), this can be considered the most successful online game today. when the number of players is enormous. Thanks to LOL, it doesn't require you to own a computer with high configuration, you can play it even on medium-sized laptops that are still smooth. However, if your computer is only low configuration, it will also have difficulty playing smoothly this game. So in the following article TipsMake.com will guide you to customize some settings in the game to be able to increase FPS and play LOL more smoothly on low-profile devices. Please refer.



1. Customize the League of Legends Client

For those of you who don't know what the Client is, the picture below is the client for LOL:

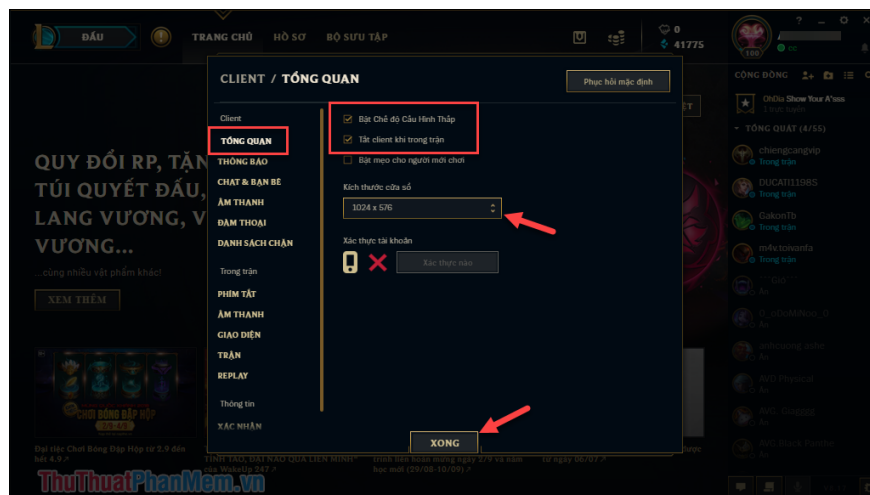


The client is where you view account information, profile, collection, store, etc. is where you choose the game mode and the champion before the game.

As you know when we enter the game, the client is still running and will take up part of your computer's resources. This may be the reason why our loading time is longer and sometimes makes the game lag.

To automatically turn off the Client when entering a match, we do the following:

You click on the gear settings icon in the upper right corner of the Client to install. In the settings window in the Overview section, tick the 2 lines that are **on Low configuration mode** and **Disable the client during the battle**. Next you should choose the lowest window size that is **1024x576**, finally you click Done to save.



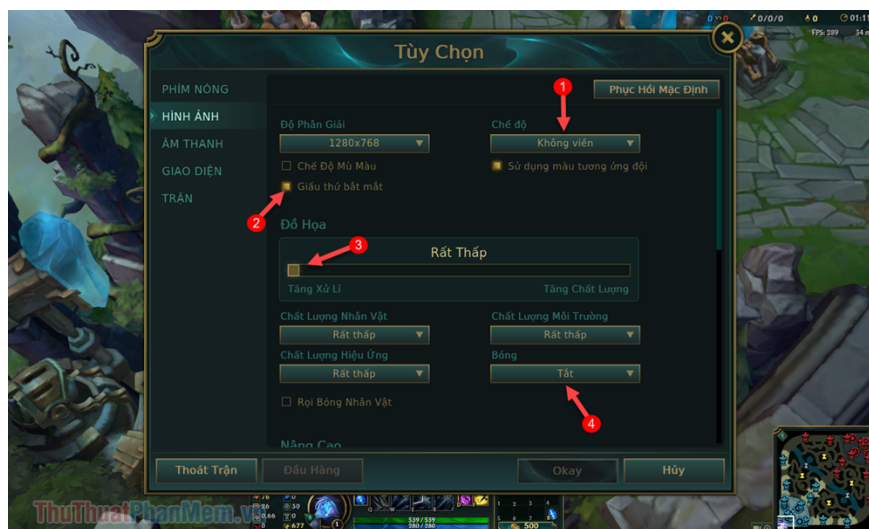
2. Custom in the match

After installing in the client, we will continue to install the graphics in the match. You should go to the gym to install to avoid affecting the match.

You open the settings in the match and select **Photos**.

1. The first is the resolution, you should choose the lowest resolution possible, but also should not be too low to affect visibility.
2. The mode item you choose Borders
3. Check the item Hide face (the redundant details will be turned off)
4. The graphics you dragged down to Very low.
5. Section Shadows you select Off (this is important), weak machines should turn off this shading function will help reduce lag.

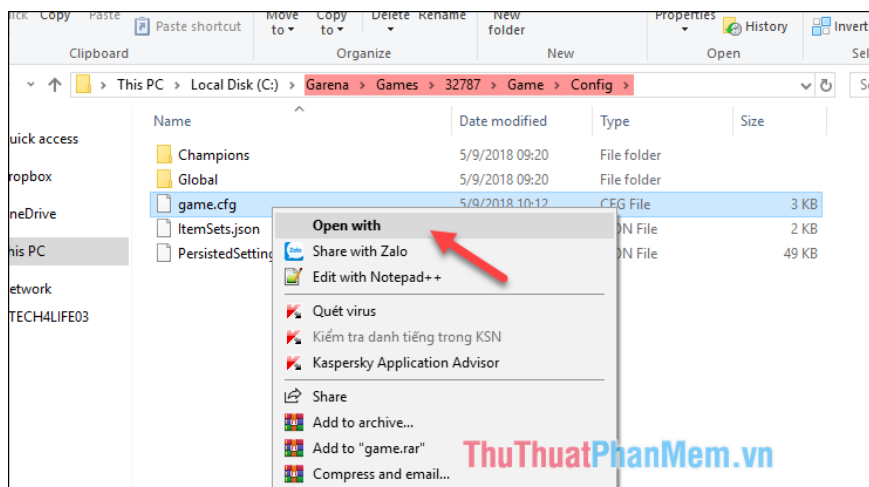
Finally, click Okay to save.



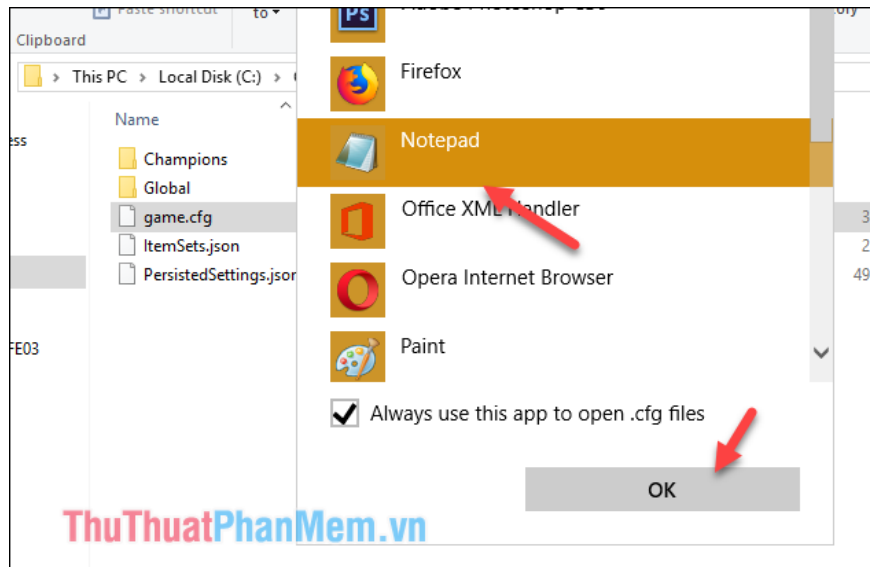
3. Custom graphics in the LOL file system

You open the folder containing game LOL and then navigate to the **Config** folder as shown below (maybe each device will be stored in a different folder, the game lol folder will be named 32787).

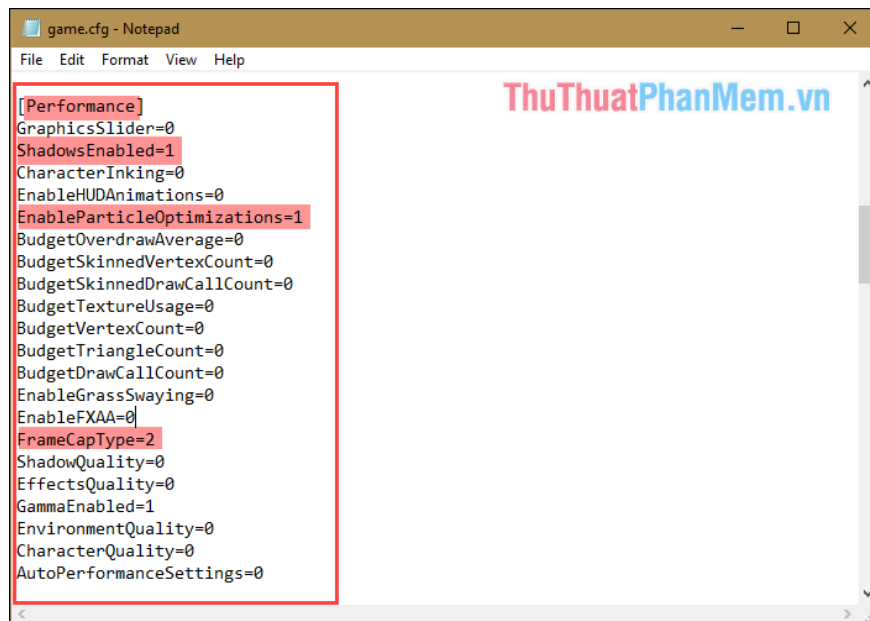
After finding the Config folder, right-click on the game.cfg file and select **Open with**



Next select Notepad and click OK

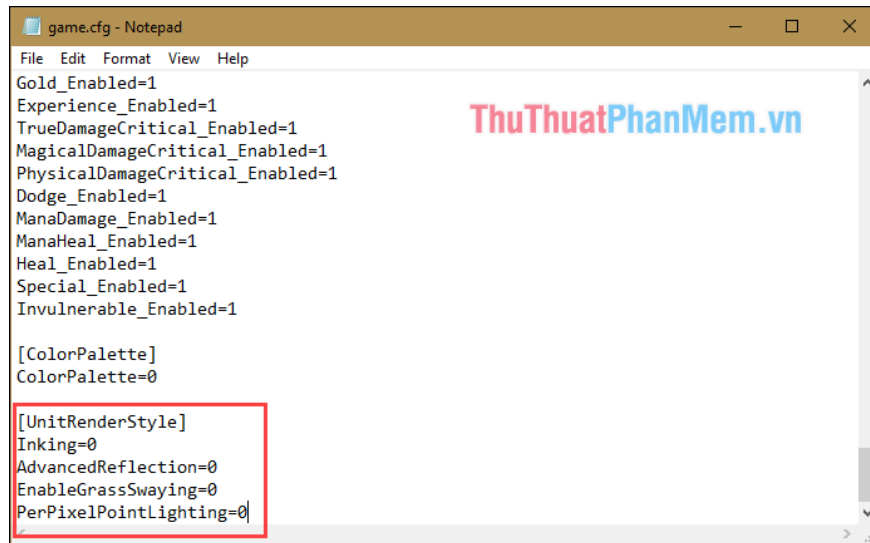


After the game.cfg file is opened, go to the **performance** section , you change all the values ??of the items to 0, except for two items, **ShadowsEnabled** and **FrameCapType** , you keep the value. For the EnableParticleOptimizations section, you change the value to 1.



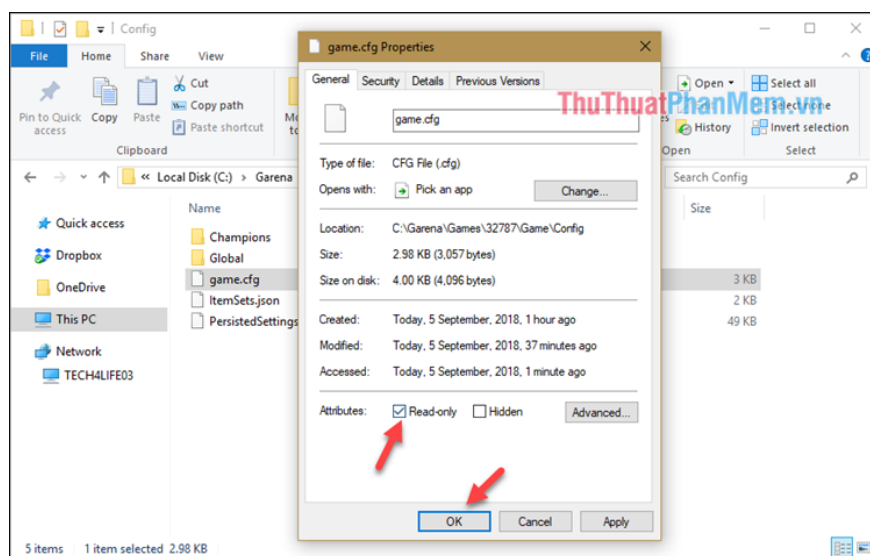
Next, you drag down the bottom press Enter down the line and add the following command line to reduce lag:

```
[UnitRenderStyle] Inking = 0 AdvancedReflection = 0 EnableGrassSwaying = 0 PerPi
```



Finally, press **Ctrl + S** to save and turn off this window.

In the next step, right-click on the game.cfg file and select Properties (the last line), then a new window will appear, select the **Read-only** option and click OK



Now you can go into the game and feel if the game has less lag yet.

Also to play the game as smoothly as possible, you should turn off other programs during the game, especially the browser you should not go to Facebook while playing games because facebook will consume a lot of RAM of the computer.

You finished reading the article "**Increase fps lol - How to increase the legendary League of FPS game to play smoothly on low-profile machines**" edited by the [TipsMake](#) team. We hope this article has provided you with many useful tech tips and tricks. You can search for similar articles on tips and guides. Thank you for reading and for following us regularly.