

# Improve facial recognition capabilities on Windows 10

In addition to standard password entry features, Windows 10 also includes Windows Hello, allowing for extremely fast login via iris and facial recognition. However, login isn't always smooth, and therefore improving Windows 10's facial recognition capabilities is absolutely necessary.

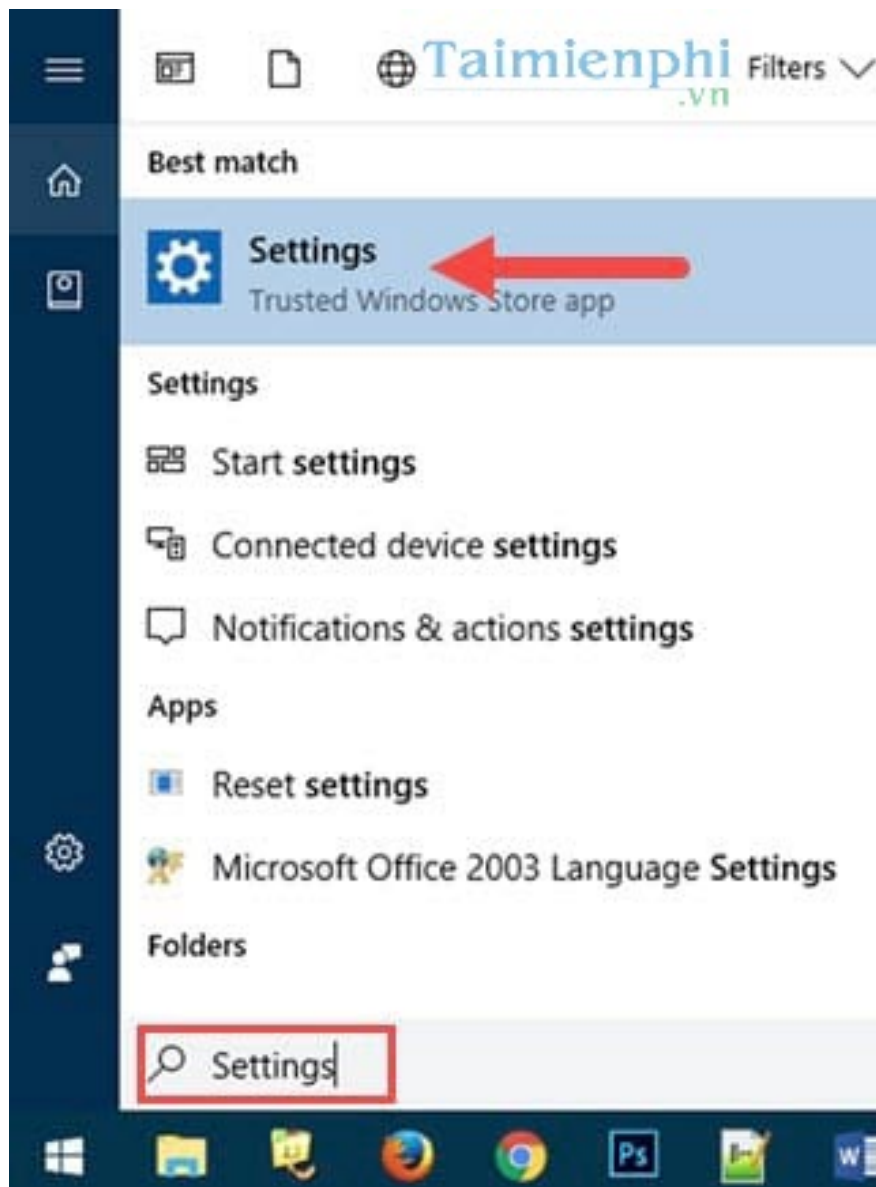
On Windows 10, in addition to setting a regular computer password, users have many other options such as setting a PIN, verifying with a picture, or using the facial recognition feature in Windows Hello to log in to the computer. However, setting a computer password using Windows Hello is sometimes not as accurate as typing a PIN.



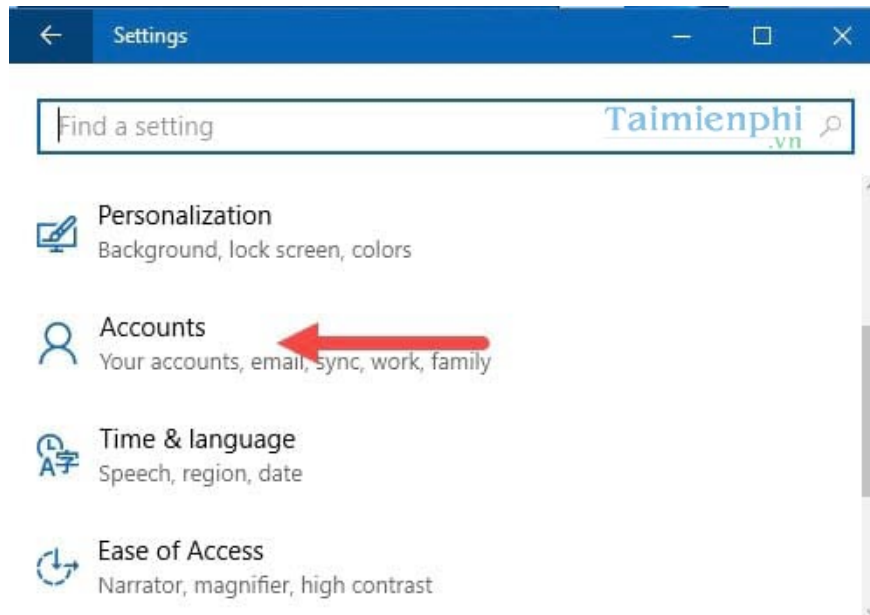
That's why Windows 10 is always optimized for users by improving facial recognition capabilities, upgrading software for more stable and better performance than previous versions, because computer security is always the top priority. If Windows Hello is optimized, we can remove the regular computer password because we no longer need it.

[Guide to improving Windows 10 facial recognition.](#)

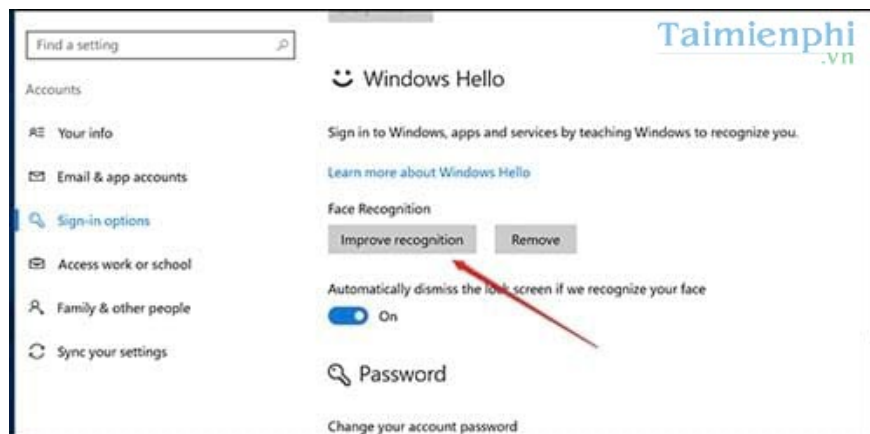
*Step 1:* Open **the Start Menu** , type " **Settings** " in the search box, and access the Settings option.



*Step 2:* In Settings, access the **Accounts** section to set up Windows Hello.



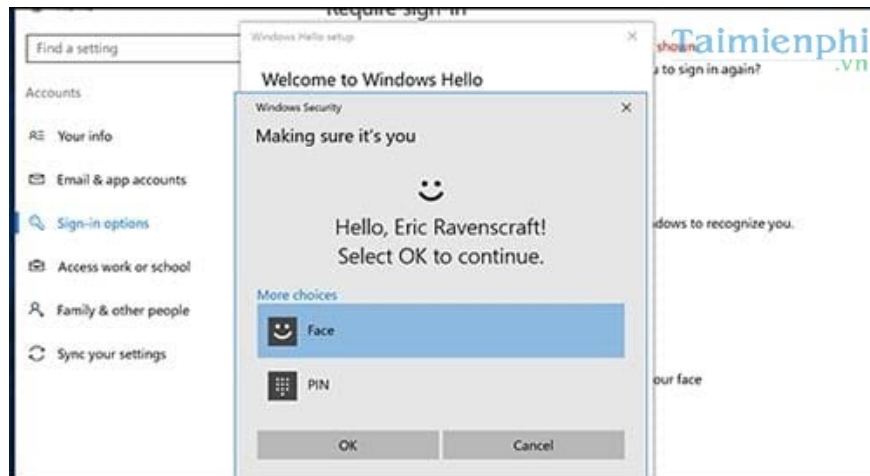
Step 3: In the **Sign-in Options** section , select **Face Recognition** > **Improve recognition**.



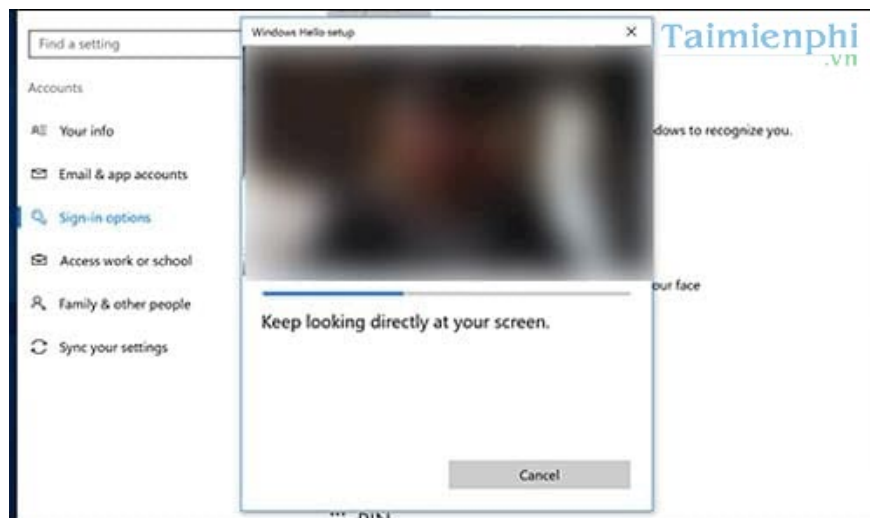
Step 4: A **Windows Hello** notification will appear introducing the app. Click on Get Started to begin using it.



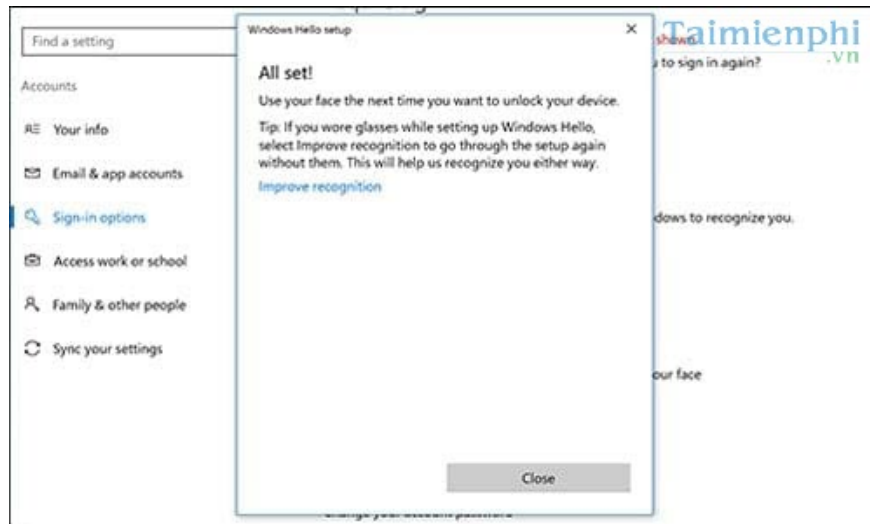
*Step 5:* Now Windows Hello will give you two options: using your face or a PIN. Click on Face to improve Windows 10's facial recognition capabilities.



*Step 6:* At this point, the camera system will scan your face to improve Windows 10's facial recognition capabilities.



*Step 7:* After all settings are complete, an "All set" message will appear. To finish, click "Close". The Windows 10 facial recognition enhancement is now complete.



Above, we have completed the improvements to Windows 10's facial recognition capabilities, enhancing the Windows Hello feature and improving Windows 10 security. Furthermore, using Windows Hello eliminates the need to reset Windows 10 to its factory settings when you forget your password or PIN, or when you encounter errors preventing you from logging into your computer even after entering the correct password or PIN.

The improvements to Windows 10's facial recognition capabilities don't significantly affect Windows 10's boot speed, so you can rest assured. Your computer will still maintain a stable speed; however, if you experience any issues with boot speed, you should consider trying some methods to speed up Windows 10, as the system isn't always ideal, especially with Windows updates that might make your computer feel sluggish.

You finished reading the article "**Improve facial recognition capabilities on Windows 10**" edited by the [TipsMake](#) team. We hope this article has provided you with many useful tech tips and tricks. You can search for similar articles on tips and guides. Thank you for reading and for following us regularly.