

Immediately turn off these services on Windows 10 to play games smoother

By disabling unnecessary services in Windows 10, free up RAM and system resources, optimize the system and experience smoother gameplay, lag free.

On Windows 10, there are many built-in services and bloatware. Also when you install 3rd party software, it also means the installation of third party services.

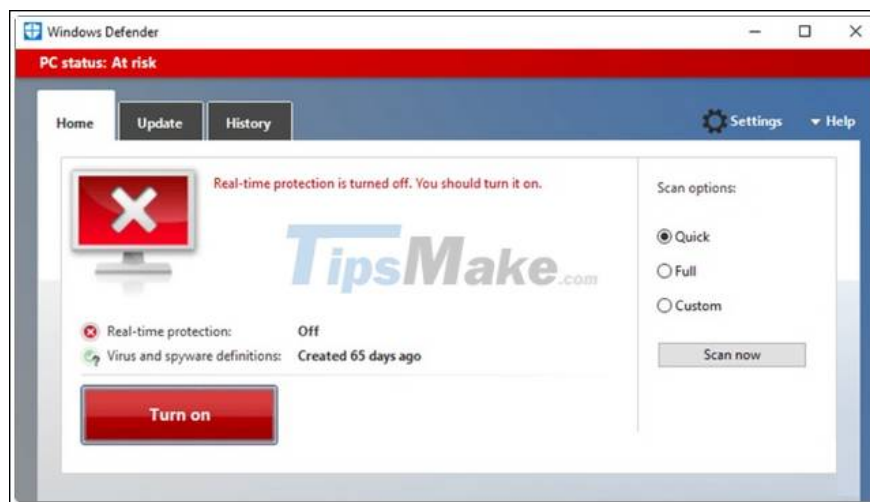
In which, some services run in the background so that the software and the program work normally, there are also unnecessary services, occupying system resources, making the computer run slower that you should shut down.

Please turn off these services immediately on Windows 10 to play games smoother

To help optimize, speed up the system and play games smoother, you should immediately turn off these services on your Windows 10 computer:

1. Windows Defender & Firewall Service

There's no denying Windows Defender Firewall is extremely helpful in case you don't have antivirus applications installed.

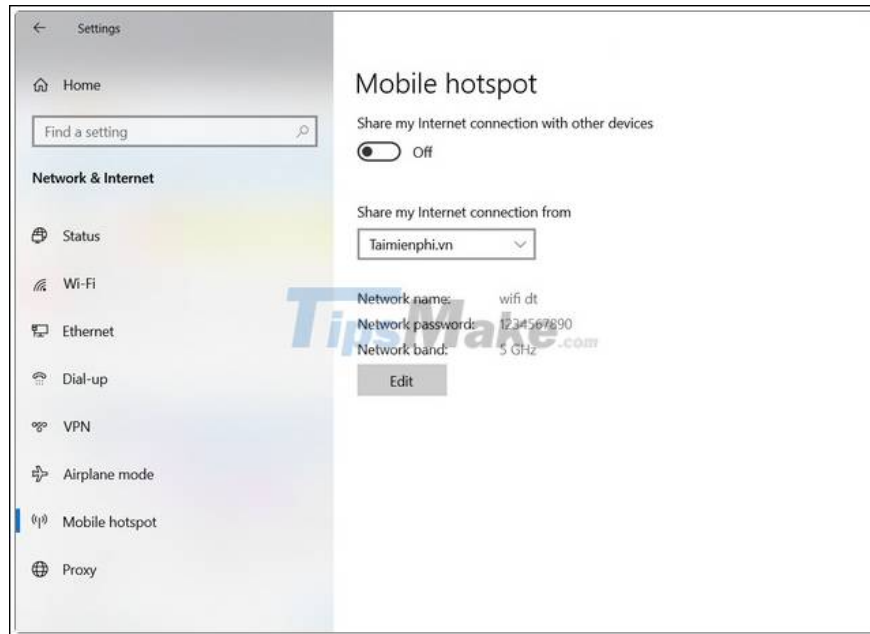


However, this service is not really necessary, even blocking players from downloading and installing applications and games, so you can disable and temporarily disable this service before starting the game. If you

do not know how to turn off Windows Defender you can refer to the instructions here and follow the steps.

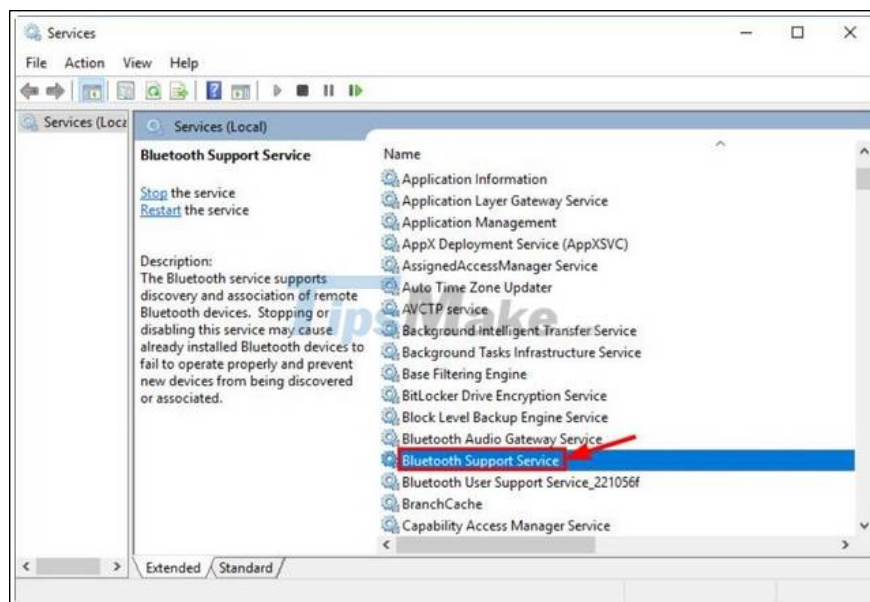
2. Windows Mobile Hotspot Service

This service is used to share WiFi, wired Ethernet or data connections. However, you do not always need to enable this service, instead you should turn off the service to speed up the system and experience smoother gaming experience.



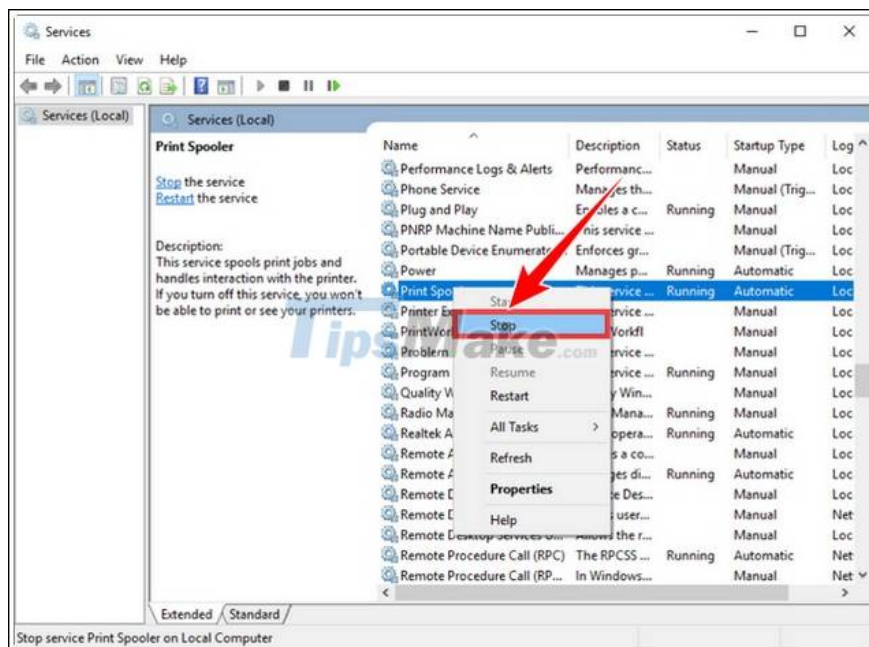
3. Bluetooth Support Service

Bluetooth allows users to wirelessly connect to devices such as speakers on laptops or computers. However, if not absolutely necessary, it is best to turn off this service.



4. Print Spooler

Printer Spooler stores print jobs in a queue. And if you don't use a printer, you can turn this service off to optimize system performance.



5. Fax

In fact Fax is outdated, and so it's best to turn this service off to improve Windows 10 performance and play better games.



6. Remote Desktop Configuration and Remote Desktop Service

Remote desktop utility on Windows 10 allows users to connect to other computers remotely, and requires Remote Desktop Configuration and Remote Desktop Service services.

Similarly, if you never connect to the remote computer, it's best to turn off both services.

7. Windows Insider Service

Windows Insider Service allows users to download and experience early features in Windows 10 builds. If you do not participate in the Windows Insider program, you should disable this service to optimize the gaming experience on your Windows 10 computer.

8. Secondary Logon

This service is used to allow administrators to log in with a regular user account (not the admin account) and perform Admin tasks without logging out.

However, you can also turn off this service to play games on Windows 10 smoother.

9. Downloaded Maps Manager

Maps on Windows 10 requires this service enabled in order to function properly. And if you're not using Maps, it's best to turn this service off as well.

10. Touch Keyboard and Handwriting Panel Service

Similarly, for the Touch keyboard virtual keyboard on Windows 10 to function properly requires activation of the Touch Keyboard and Handwriting Panel services.



It is worth mentioning that these services are also not necessary, so you can turn it off, disable it.

11. Offline Files

Windows 10 Offline Files service also known as Win32 (or CscService) only launches when another user, application or service starts, and runs as local system in the process of sharing svchost.exe with other services.

This feature allows users to access network files even when the computer is not connected to the network.

Similar to the above services, Offline Files is also an unnecessary service, so you can turn off this Windows 10 service to improve computer performance.

12. Windows Connect Now

Service Windows Connect Now is used on the laptop to connect to the wireless network. If you are using a desktop computer without a wireless card, you can safely disable this service.

13. Remote Registry

This Windows 10 service allows users to edit the Registry remotely. However, on the technology forums, some users share this service as the culprit causing a variety of security issues, so you should turn off this service as soon as possible.

14. Application Layer Gateway Service

Application Layer Gateway Service supports 3rd party protocol plug-in to share Internet connection. The problem is that on modern computers that don't require such features, you can safely shut down this service no matter what.

15. Smart Card

Service Smart Card on Windows 10 is used for security. But this is also not an important service, it's best to turn it off or disable temporarily before starting to play the game.



16. Windows Image Acquisition

Windows Image Acquisition (WIA) is the driver responsible for communication between the system and the graphics hardware. However, some reports say that WIA is the culprit causing high CPU usage and system slowdown.

For the above reasons, you should turn off this service immediately and always to avoid the same problem from occurring.

17. Security Center

Windows 10 Security Center is an integrated part of applications that start up on the system and run in the background, one of the main culprits causing the computer to slow down. So you should immediately turn off this service if you do not want the gaming experience to be jerky, laggy, or even hang.

18. Connected User Experiences and Telemetry

Windows 10 Connected User Experience and Telemetry also known as Universal Telemetry Client (UTC) and runs under a service called DiagTrack. This service runs automatically and identifies reliability issues, and sends data to Microsoft.

If you are concerned about security, you can turn this service off, and also to speed up Windows 10.

19. Retail Demo Service

This service is primarily designed for retailers who want to give customers a demo of how Windows 10 works.

To improve performance, optimize the system to work faster, you should also turn off this service.

20. Windows Media Player Network Sharing Service

Windows 10 uses this service to share the library from your system to other media players or devices.



If you are not using Windows Media Player, you can turn this service off to free up memory and speed up your PC.

21. AllJoyn Router Service

AllJoyn Router is the latest service added on Windows 10. Basically AllJoyn Router is an open source project of AllSeen Alliance, allowing Windows 10 to communicate with other services using the Internet of Things (IoT).

The AllJoyn Router Service is used to route AllJoyn messages to AllJoyn clients.

Most Windows 10 users have no need to use and so you should immediately turn off this service.

22. Geolocation Service

Geolocation Service is responsible for tracking current system location such as radar source, mobile phone or terminal computer with Internet connection.

Since this is a service running in the background, it consumes a lot of system resources. To optimize and speed up Windows 10, Taimienphi.vn recommends that you turn off Geolocation Service.

23. Windows Biometric Service

The Windows Biometric Service is part of the WBF and allows client applications to collect, process, compare, and store biometric data without accessing biometric hardware.

In the simplest sense, this service allows all biometric devices such as fingerprint and face scanners, to work with Windows Hello.

However, this is also an unnecessary service, so you can safely turn off the service to optimize gaming performance.

24. Program Compatibility Assistant Service

Program Compatibility Assistant Service is capable of detecting incompatible or outdated software and preventing users from installing and running on the computer.

According to some users, this service is also the culprit causing many problems. Therefore, it is ideal to turn off this service to both free up system resources and avoid possible errors and problems.

25. Enterprise App Management Service

Finally, the Enterprise App Management Service is used to manage enterprise applications. As an individual user, you can also turn off this service to improve computer performance.

The above TipsMake article has just reviewed you the unnecessary services and should be turned off to speed up Windows 10 and a smoother gaming experience.

Hope the article is useful to you. Good luck.

You finished reading the article "**Immediately turn off these services on Windows 10 to play games smoother**" edited by the [TipsMake](#) team. We hope this article has provided you with many useful tech tips and tricks. You can search for similar articles on tips and guides. Thank you for reading and for following us regularly.