

# Ignore the Metro interface when starting Windows 8

Windows 8 always displays the Metro boot screen when you log in to the system.

*TipsMake.com* - **Windows 8 always displays the Metro boot screen when you log into the system. If you are using a normal computer, the display of this screen is not very convenient even quite troublesome.** This article will guide you to start and log in straight to the Desktop interface on Windows 8 without using additional software.

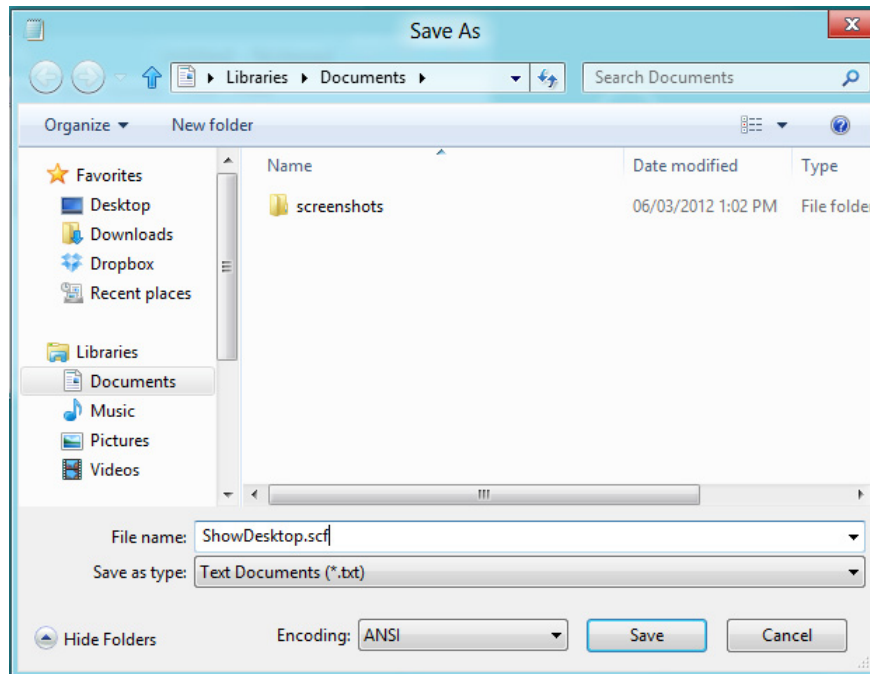
## Create Shortcut

First thing, open Notepad - you can do this by clicking the Windows key to access Metro, enter **Notepad** into the Start screen and press Enter. After opening Notepad, copy / paste the following text into the file:

```
[Shell]
Command = 2
IconFile = Explorer.exe, 3
```

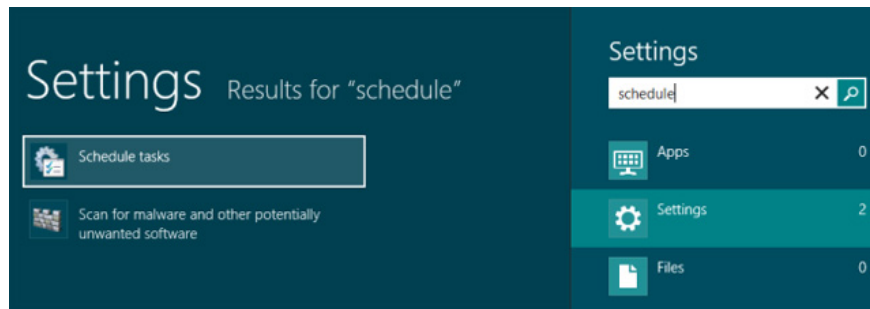
```
[Taskbar]
Command = ToggleDesktop
```

Save the file under the extension **.scf** - the file name may be *ShowDesktop.scf*.

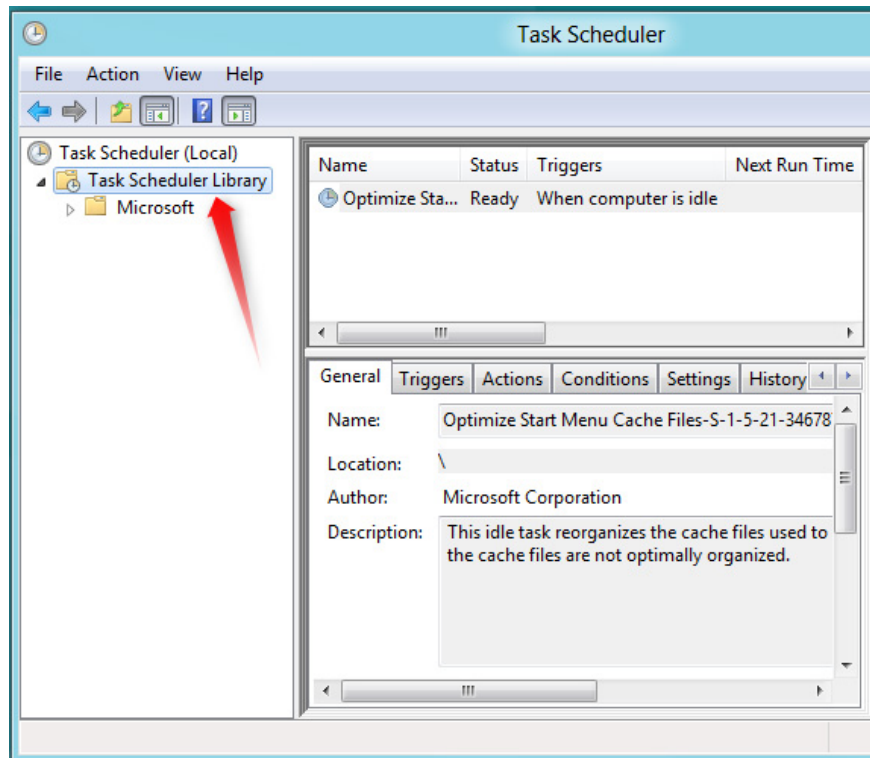


## Use Task Scheduler

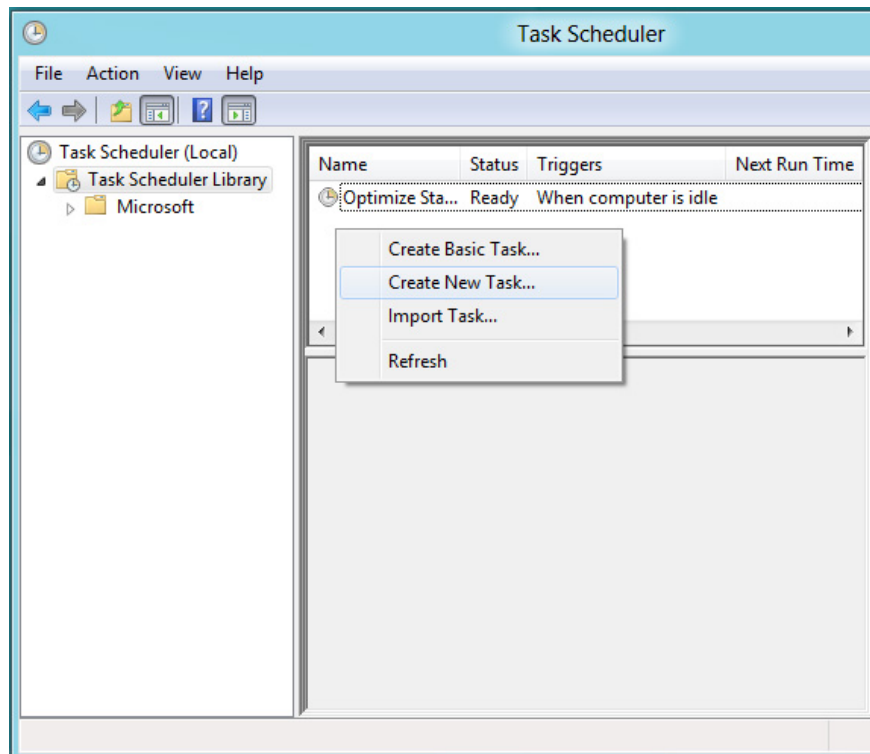
Now you need to set up shortcuts to automatically run files when logging in with the Task Scheduler tool. Start the Task Scheduler by pressing the Windows key again, typing **Schedule**, clicking on the **Settings** folder and selecting **Schedule tasks** on the left side of the screen. You can also find this tool in the **Administrative Tools** section of Control Panel.



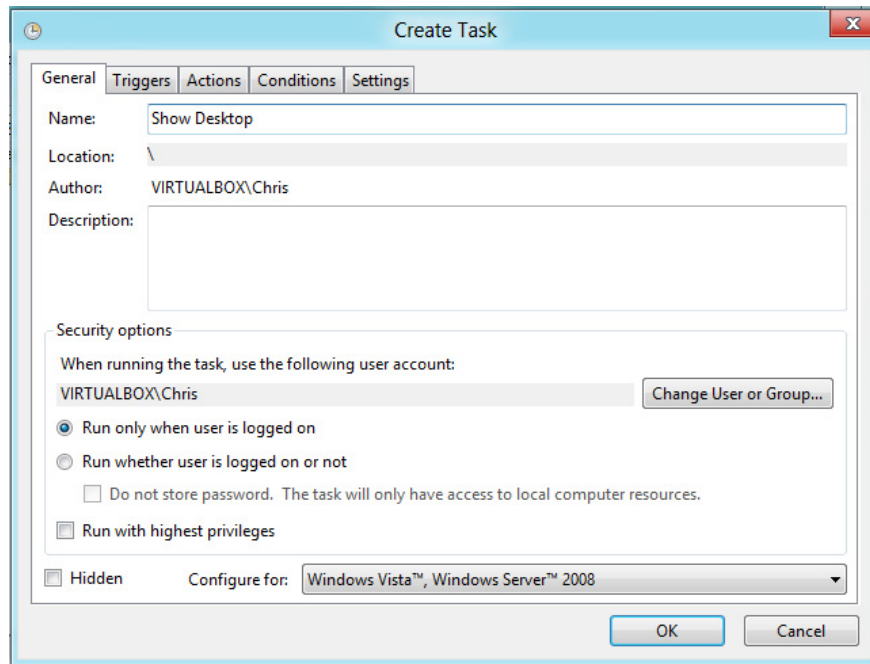
Click on the **Task Scheduler Library** folder on the left side of the Task Scheduler window.



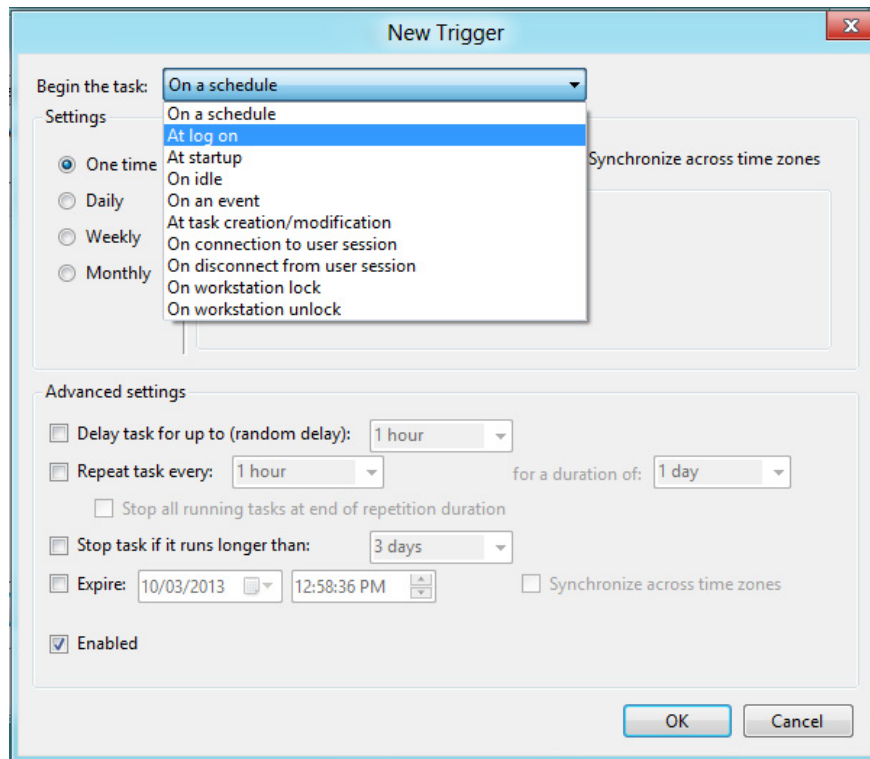
Right-click on the main interface and select **Create New Task**



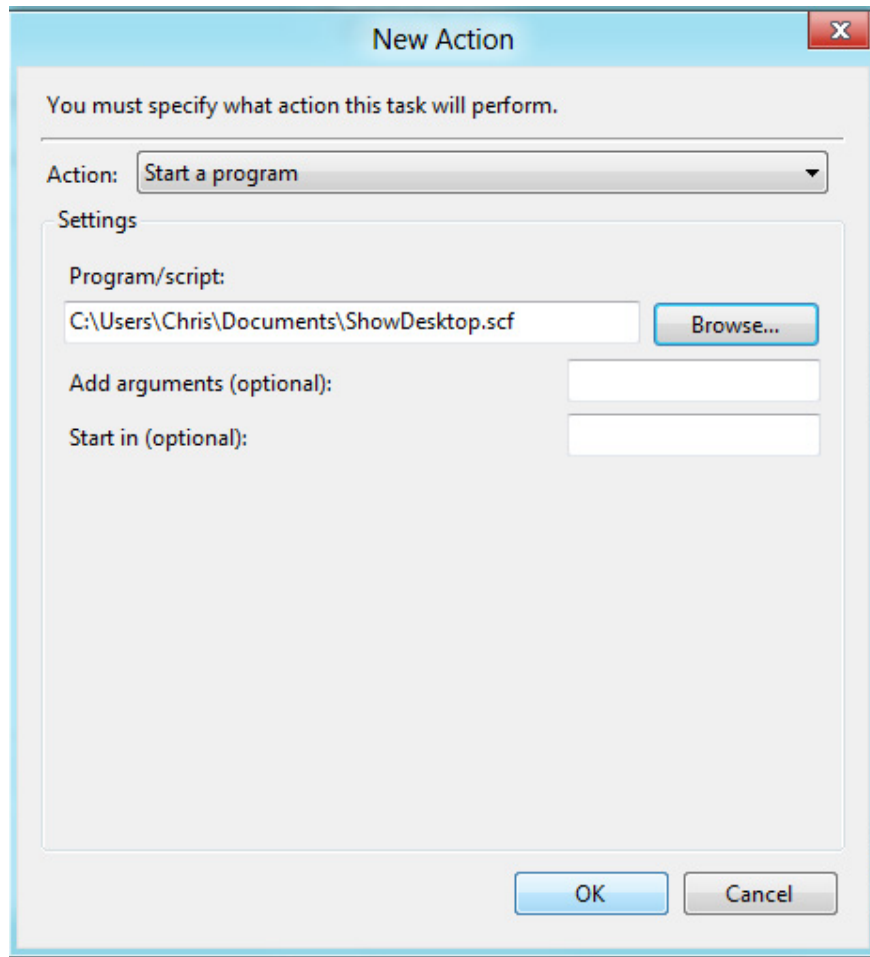
On the *General* tab, enter the name of the task, for example, **Show Desktop**



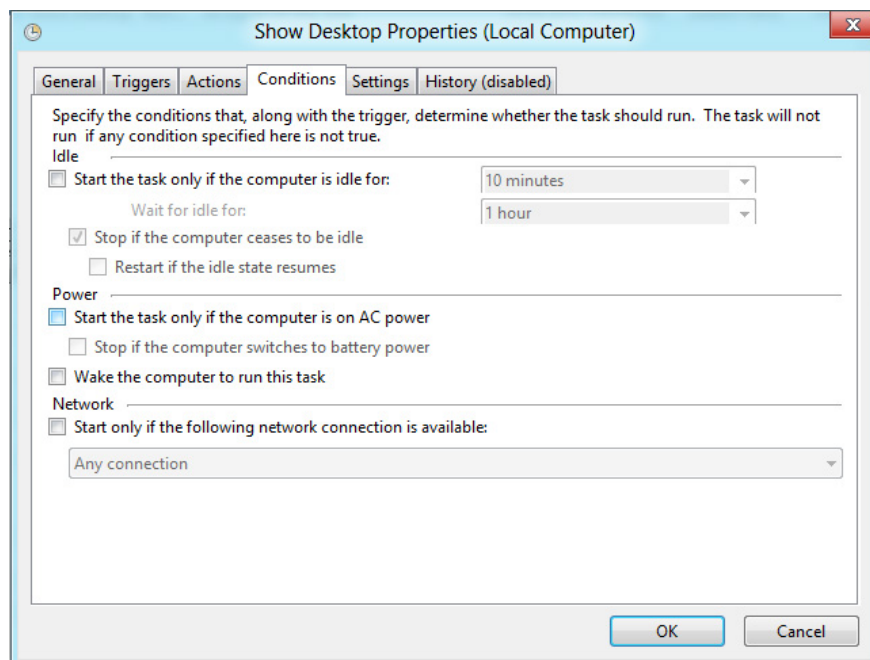
Click on the *Triggers* tab and use the **New** button to set up a new activation. In the *New Trigger* window, set *Begin the task to At log on* and click **OK** .



Click on the *Actions* tab and create a new action. Set the action to **Start a program** , use the *Browse* button to select the location of the *ShowDesktop.scf* file you created above, click **OK** .



Click on the *Conditions* tab and uncheck the **Start the task only if the computer is on AC power** . Without removing this option, your laptop will not be able to boot into Desktop mode if the computer is in battery mode.



Click **OK** and the job is complete. You will be booted straight to the Desktop interface after logging in. Good luck!

You finished reading the article "**Ignore the Metro interface when starting Windows 8**" edited by the [TipsMake](#) team. We hope this article has provided you with many useful tech tips and tricks. You can search for similar articles on tips and guides. Thank you for reading and for following us regularly.

---