

Identifying whether Windows 10 is an upgrade or a fresh installation on your computer.

Knowing how to identify whether Windows 10 is an upgrade or a fresh installation will let users know whether the Windows 10 pre-installed on their computer or someone else's is an upgrade or a fresh installation. Although knowing whether Windows 10 is an upgrade or a fresh installation isn't crucial, it's a useful trick that users should know.

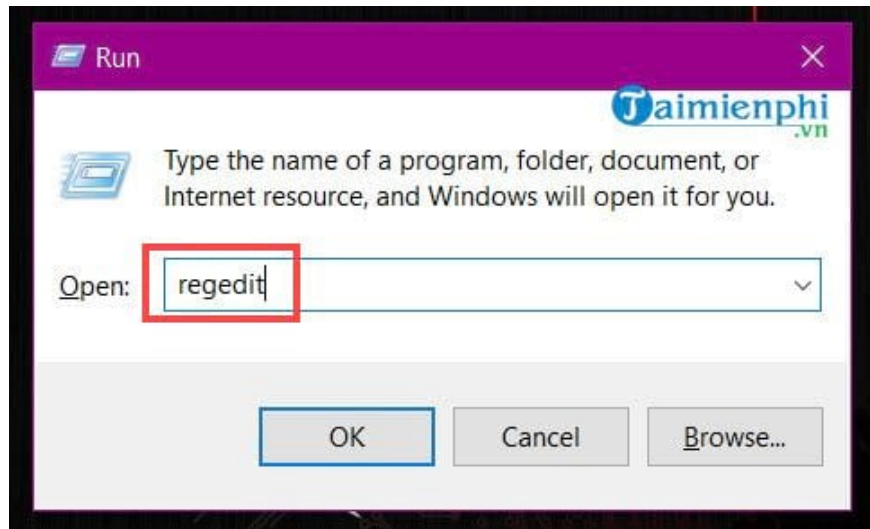
For the average user, **knowing whether a Windows 10 upgrade or a fresh installation** isn't that important. However, many readers might be surprised that Windows 10 is so meticulous that it even records whether the system being used is an upgrade or a fresh installation. Indeed, Windows 10, and Windows operating systems in general, have many other surprising aspects besides installation and upgrades.



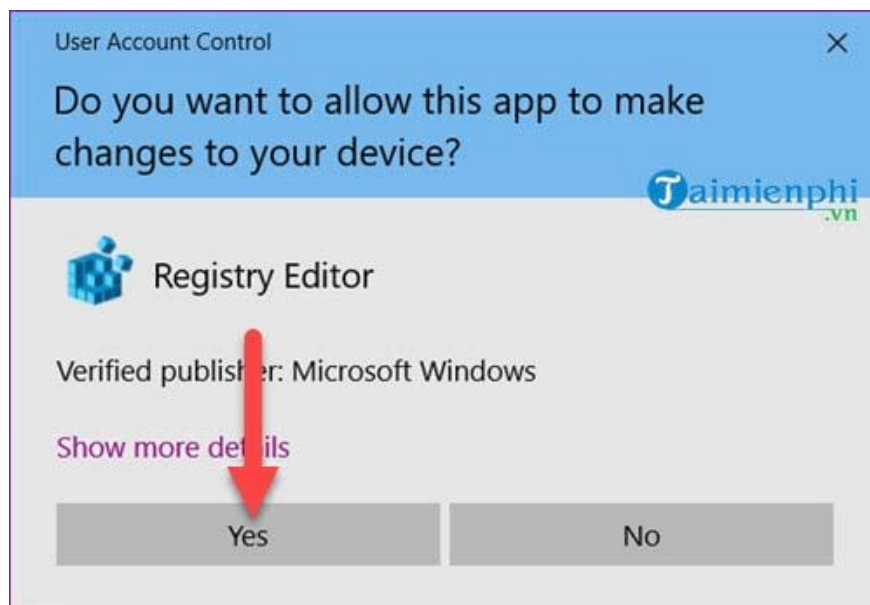
Whether you're doing a fresh install or simply updating Windows 10 from Windows 7 or Windows 8, the Windows operating system still records or stores all the necessary information. The following extremely simple guide will show you whether your Windows 10 update is due to a Windows 10 upgrade or a fresh installation.

How to tell if Windows 10 is an upgrade or a fresh installation.

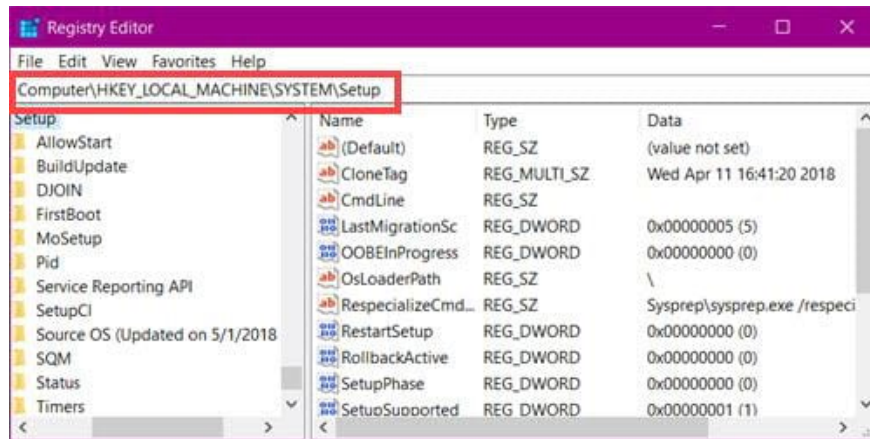
Step 1: To determine whether Windows 10 is an upgrade or a fresh installation, you need to access the Registry Editor on your computer. To access it, press **Windows + R**, then type **Regedit** , and press **OK** .



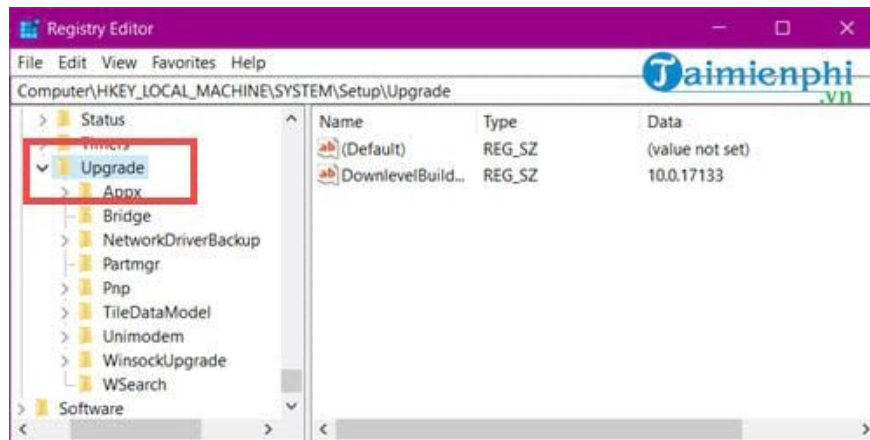
If you then receive a system message confirming access to the Registry Editor, select **Yes** ; otherwise, skip this step.



Step 2: Here, access the following path: **Computer > HKEY_LOCAL_MACHINE > SYSTEM > Setup** and check its subfolders.



Step 3: If you find an "Update" folder within the "Setup" folder, it means Windows 10 is an upgrade, not a fresh installation. This is also how to determine whether Windows 10 is an upgrade or a fresh installation on your computer or laptop.



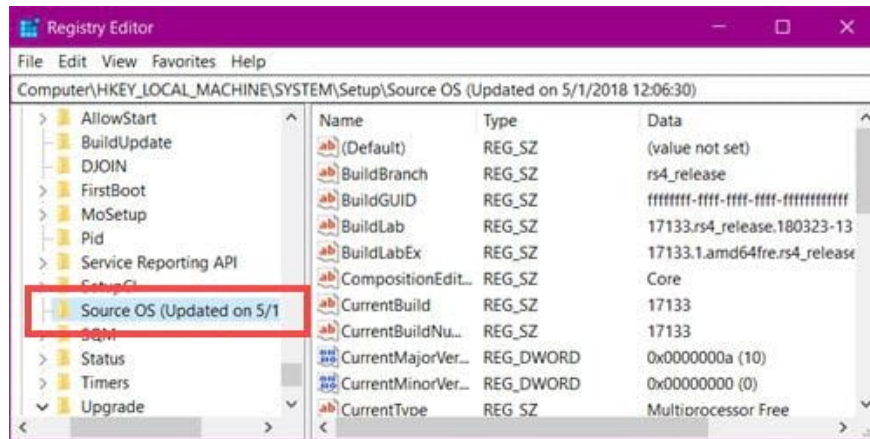
Note: The Windows 10 upgrade or fresh install information only applies to those who have just purchased a computer. Those who have updated to subsequent versions of Windows 10 multiple times will obviously have this folder.

How to identify which version of Windows 10 you are upgrading from.

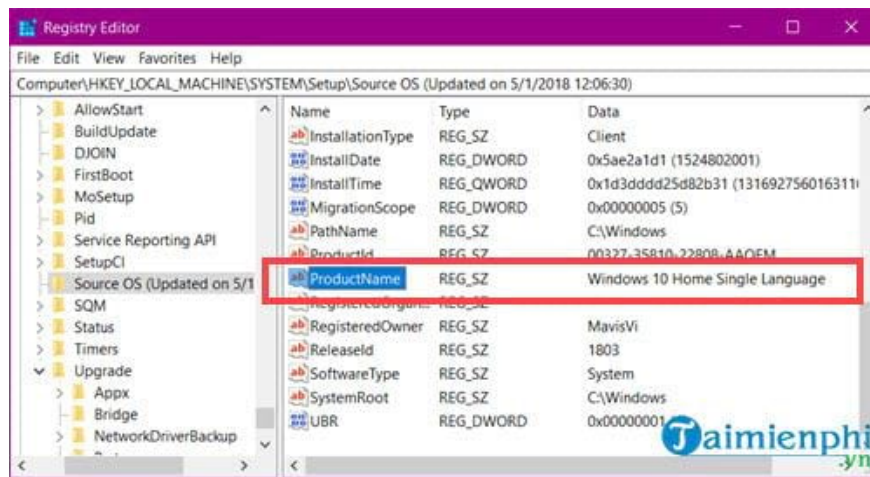
Besides identifying whether it's an upgrade or a fresh installation of Windows 10, we can also check which version of Windows 10 was the most recent update.

Note: This method only identifies your most recent Windows 10 upgrade, not the original version.

- Still within **the Setup folder** that we accessed earlier, find the item named Source OS.



In the **Source OS** section, simply find the **ProductName** ; the Data section will show you the most recent version of Windows 10 you upgraded to.



Above are some simple yet interesting tips for those who like to tinker with Windows 10, helping you identify whether it's an upgrade or a fresh installation. Identifying whether it's an upgrade or a fresh installation isn't the most important thing; what's more important is that we've discovered many new features in Windows 10, including the Registry Editor, a very useful tool on computers and laptops.

If you've just installed Windows 10 Pro and haven't activated it yet, don't worry, use the activation code and refer to the article **on activating Windows 10 Pro** here for instructions.

For example, we can speed up Windows 10 startup using the Registry by editing a few parameters within it. For specific instructions, you can visit here: [How to speed up Windows 10 startup using the Registry](#) for detailed guidance from TipsMake.

You finished reading the article "**Identifying whether Windows 10 is an upgrade or a fresh installation on your computer.**" edited by the [TipsMake](#) team. We hope this article has provided you with many useful tech tips and tricks. You can search for similar articles on tips and guides. Thank you for reading and for following us regularly.