

Hyena 8.0 - Comprehensive system administration tool

Using only the administration tools available in Windows to manage a Windows network with Active Directory will be a challenge. Therefore, system administrators need to have support tools. And Hyena is the number one choice for you.

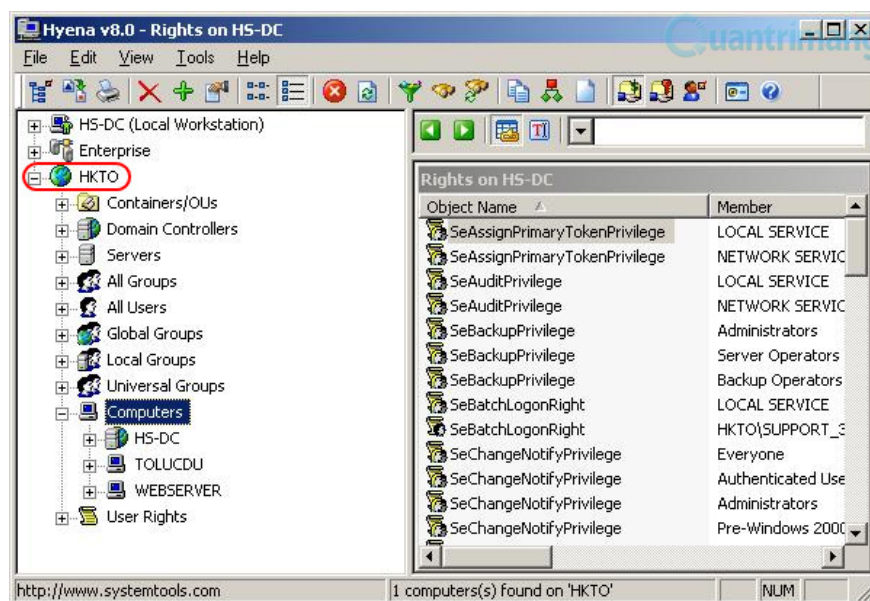
If you only use the administrative tools available in Windows to manage a Windows network with Active Directory will be a challenge. With many domain names, hundreds of servers, workstations, user systems . you can hardly cover them all. Therefore, system administrators need to have support tools. And Hyena is the number one choice for you.

Hyena was born to provide you with a comprehensive means of administering the network in a simple, focused and unique way. Widely used by thousands of system administrators worldwide, Hyena is a tool that administrators cannot ignore. With management interface and operations designed in Explorer style, including context menu corresponding to all objects, Hyena helps you manage almost all components in the network such as: user, group , share, domain, computer, service, printer, file, session, disk space, user right, job scheduling, processes, messaging .

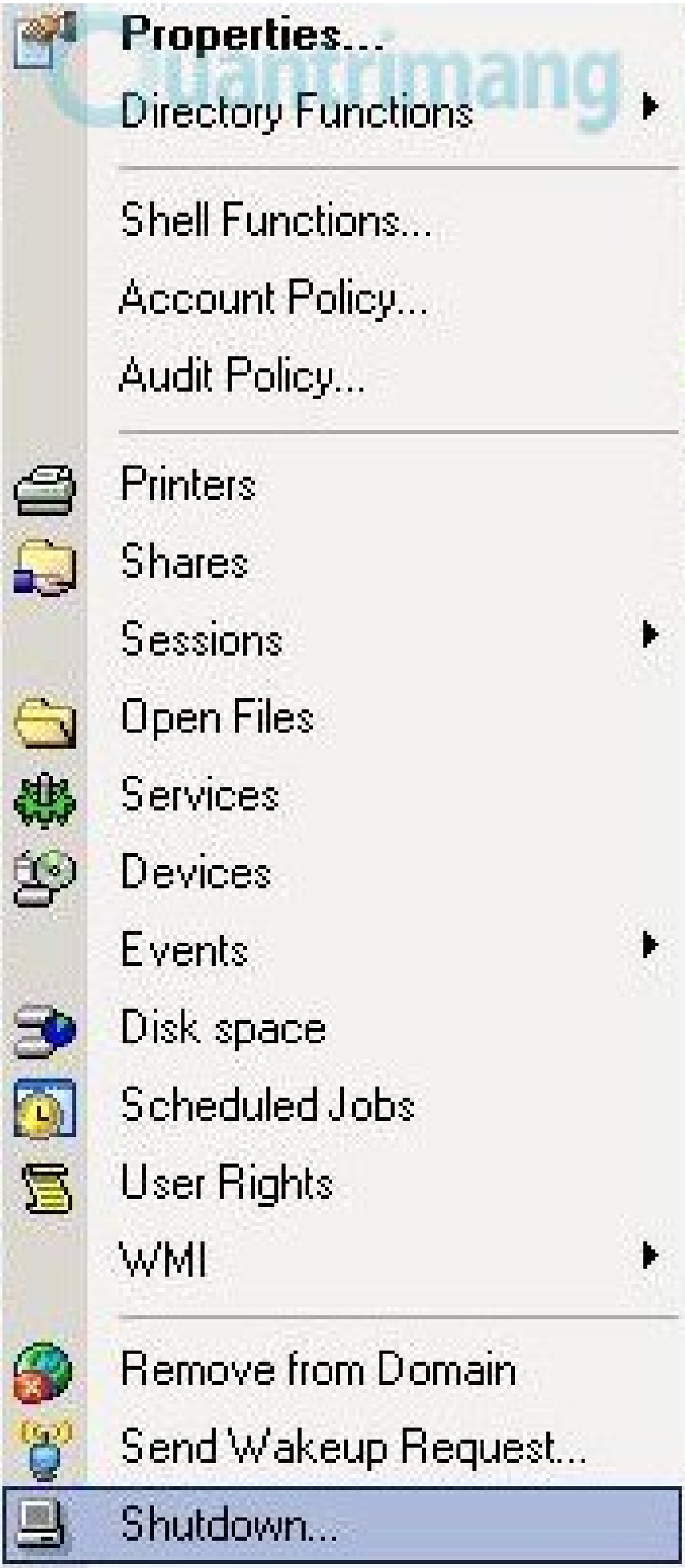
Hyena can run on any Windows operating system for workstations, including Windows 7. At the same time, this tool can administer any Windows operating system for servers, including Windows Server 2008.

To get started, go to www.systemtools.com/hyena/download.htm, click the Download link that corresponds to the **x86** (32-bit) or **Hyena x64** (64-bit) version of **Hyena** . After unpacking, double-click on the installation file and follow the instructions screen to install Hyena on your system. Here, we install Hyena on a computer that acts as a domain controller on the Windows Server 2003 operating system.

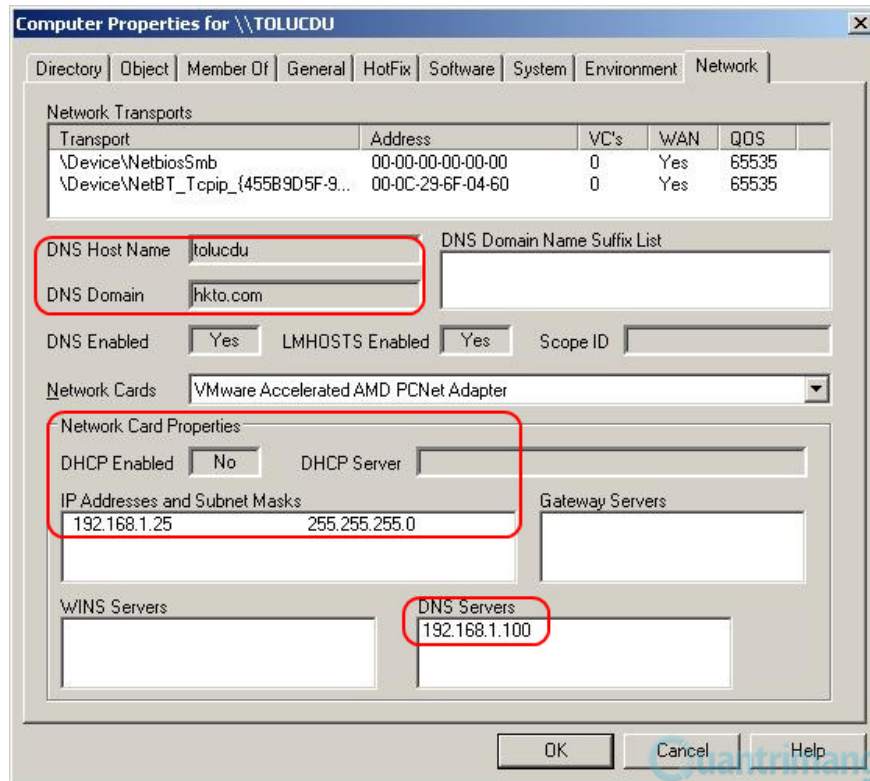
When the installation is complete, launch the tool by going to the **Start** menu> **Programs** > **Hyena** > **Hyena** . Soon after, the main screen of Hyena will appear with components such as the function menu, the toolbar, the left frame with the list of object groups and the right frame showing details corresponding to each object. To start administering a domain, go to **File** > **Add Domain** . Next, enter the domain name in the **Domain Name** section and click the **OK** button. Soon, the domain will appear in the left pane of the Hyena window.



When double-clicking on the domain name, all groups of objects corresponding to that domain will appear. Here, you can perform all of your administrative operations. For example, to manage computers belonging to this domain, click on the **Computers** section. Soon, you right-click on a specific computer name to manage. Next, in the menu that lists all the functions that appear, select a function to execute, such as *Shutdown*. Soon, Hyena will fulfill your request.



In addition, Hyena also helps you gather quite a lot of information about computers in the domain. For example, with the *Properties* function, you can display the details of the workstation such as: the number of network cards with the corresponding IP address, which user is logged in, what software is being installed on the workstation, list The list of hotfixes has been updated .



With its preeminent features, Hyena has become an effective assistant for administrators to optimize the operation of the computer network in their units.

You finished reading the article "**Hyena 8.0 - Comprehensive system administration tool**" edited by the [TipsMake](#) team. We hope this article has provided you with many useful tech tips and tricks. You can search for similar articles on tips and guides. Thank you for reading and for following us regularly.