

HP EliteBook 2530p review

The EliteBook 2530p prioritizes the same 'pro' appearance with its impact resistance, extreme weather and keyboard, good trackpoint quality.

The EliteBook 2530p prioritizes the same "pro" appearance with its impact resistance, extreme weather and keyboard, good trackpoint quality.

As a business-oriented consumer model, the EliteBook 2530 values criteria such as durability, lightness and high mobility. Due to the low-voltage processor of the Core 2 Duo series, this model is priced quite cheap despite the MIL-STD 810F American military durability standard.



HP EliteBook 2530p. (Photo: Tuan Hung).

The EliteBook 2530p version is tested and also sold in Vietnam using a 12.1-inch screen with a resolution of 1,280 x 800 pixels, a low-voltage processor Intel Core 2 Duo SL9400 clocked at 1.86GHz, RAM 2GB and 250GB hard drive speed 7,200 minutes.

The machine has a reference price of about VND 11 million (excluding VAT) in the domestic market.

Here are some detailed reviews on this model:

Part 1: Design, keyboard, Touchpad

Part 2: Screen, performance

Part 3: Sound, heat sink, battery life

General assessment.

** Advantages:*

- Attractive price compared to the features
- Design suitable for business people
- Reliability is very worth the money
- Good quality keyboard, touchpad and trackpoint
- Good heat dissipation ability

** Defect:*

- Speaker system for sound quality is not good.
 - Connection port is not rich
 - Battery life is not as good as expected
-

Design



Luxury brushed aluminum case. (Photo: Tuan Hung).

The HP EliteBook 2530p measures 282 x 214 x 25 mm, weighing 1.36 kg. The first impression of the 2530p is that this model gives a very firm grip on the hand. A slightly thick design does not affect the overall design of this business model.

The protruding battery on the back of the device is similar to the ThinkPad models as well as some other EliteBook models. The machine uses a scratched aluminum cover on the outside as well as a section for the inner hand to create certainty, less fouling, fingerprints as well as increased elegance.



Machine hinge. *(Photo: Tuan Hung).*

The most special feature of the EliteBook 2530p is its magnesium alloy frame that meets the US military MIL-STD 810F durability standard. This standard includes shockproof, moisture-proof, dust-proof and waterproof on the keyboard.

The honeycomb structure of the shell just helps the machine to increase heat dissipation. Part for the inner hand is also designed with aluminum Anodized scratch-resistant, anti-oxidant as the material of the aircraft shell.

The EliteBook 2530 does not use a joint to remove the screen when closing the lid as usual but using a lever and push button to open the screen. Operation to open the device may be a little more complicated, but it increases the durability of the machine when it falls or avoids the bumps that cause the joint to explode and affect other parts.



Right next to the machine.



Left edge.

Due to the small screen size, the EliteBook 2530 does not have an attached optical drive. Because it is the old line, of course, it doesn't come with many connectivity ports like USB 3.0, even eSATA and HDMI. A fairly old form of dial-up modem connection is no longer used on mainstream laptops that still appear on the EliteBook 2530.

In addition, it also owns 3 USB 2.0 ports, LAN, VGA, Express Card, microphone, headphone and memory card reader.

Keyboard, touchpad



The EliteBook 2530p has a typical HP keyboard.

The EliteBook 2530p uses a specific keyboard model on previous HP models such as Pavillion dv series. This design will be more difficult to clean than chiclet keyboard but for typing feeling the reviewer is better. Although owning a small screen of 12.1 inches, this model has the right size keys so familiarizing and manipulating on this model is quite easy.

One plus point for the EliteBook 2530p is that it has an extra touch key array for easy operation such as increasing volume, quickly turning on / off some features even though the space is quite limited. This key sequence with light effect is quite interesting when acting.



The machine uses lights instead of backlight.

Instead of using the backlight for the keys, HP equips its laptop model with a spotlight next to the webcam. Users who need to use it will press the button next to light to open and light. This amount of light is sufficient for use in dark space, folding lamp design is also not dazzling when users focus on looking at the screen.



Trackpoint has a very high sensitivity.



Touchpad has roughness for good use.

Like most models for other entrepreneurs, EliteBook equipped a trackpoint on the keyboard. Tests show that this device is very responsive and accurate, the user controls will quickly get used and easy to use despite being used to using the mouse or touchpad.

In addition to the "*sensitive*" trackpoint, the touchpad of the device also works well with the sharpened finish that helps the finger when the operation is not slippery, though the mouse buttons are a bit heavy.

Part 2: Screen, performance

Part 3: Sound, heat sink, battery life

Screen






Anti-glare screen.

As a business model, of course the 2530p uses anti-glare technology. The resolution of this screen is 1,280 x 800 pixels like most laptop models a few years ago while currently popular is 1,366 x 768 pixels. This screen provides a good quality, though not as sharp as a mirror screen, but compensates for a wider viewing angle and is particularly unpolished when used outdoors.

Performance performance

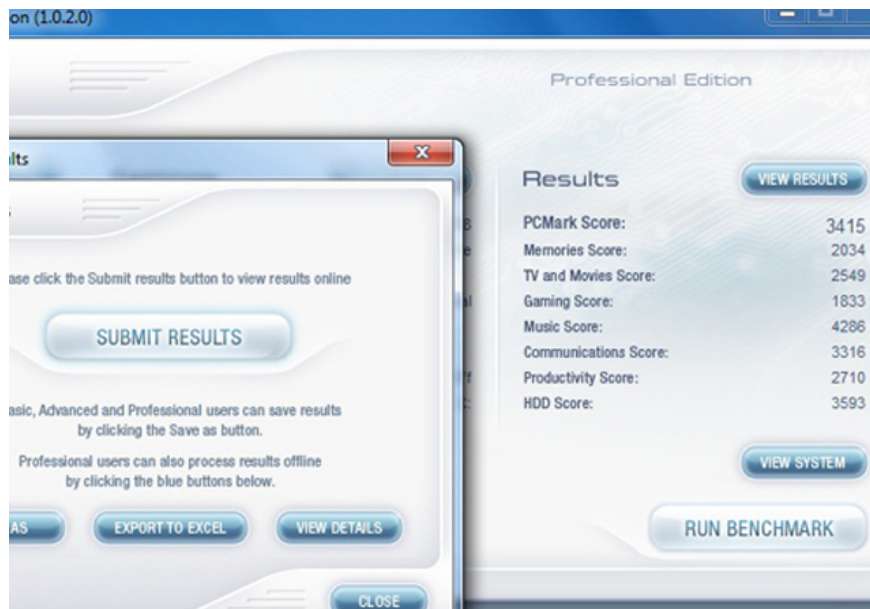
The EliteBook 2530p version is tested using a 12.1-inch screen with a resolution of 1,280 x 800 pixels, a low-voltage processor Intel Core 2 Duo SL9400 clocked at 1.86GHz, 2GB of RAM and a 250GB hard drive of 7,200 cycles. minute.

Component	What is rated	Subscore	Base score
Processor:	Calculations per second	5.2	 Determined by lowest subscore
Memory (RAM):	Memory operations per second	5.2	
Graphics:	Desktop performance for Windows Aero	3.4	
Gaming graphics:	3D business and gaming graphics performance	3.3	
Primary hard disk:	Disk data transfer rate	5.9	

 [What do these numbers mean?](#)  [View and print detailed performance and system information](#)

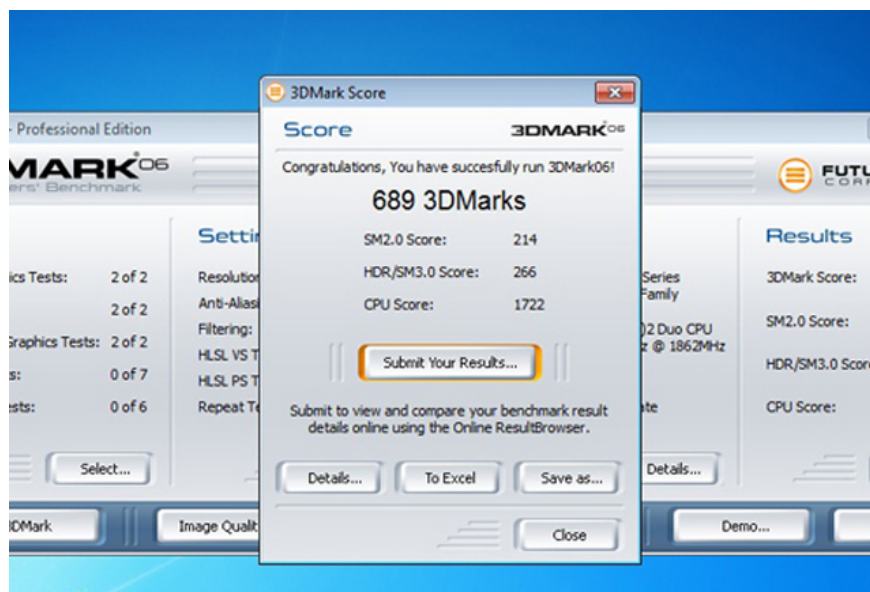
Scoring with Windows Experience Index.

With hardware like this, this model reached 3.3 points (get low score is clicked due to graphics capabilities) when marked by Windows Experience Index system on Windows 7 Ultimate (32bit). On a scale of detail, the processor reached 5.2 points, RAM memory was 5.2 points while the graphics capability was 3.4 points and the graphics for the game reached 3.3 points.



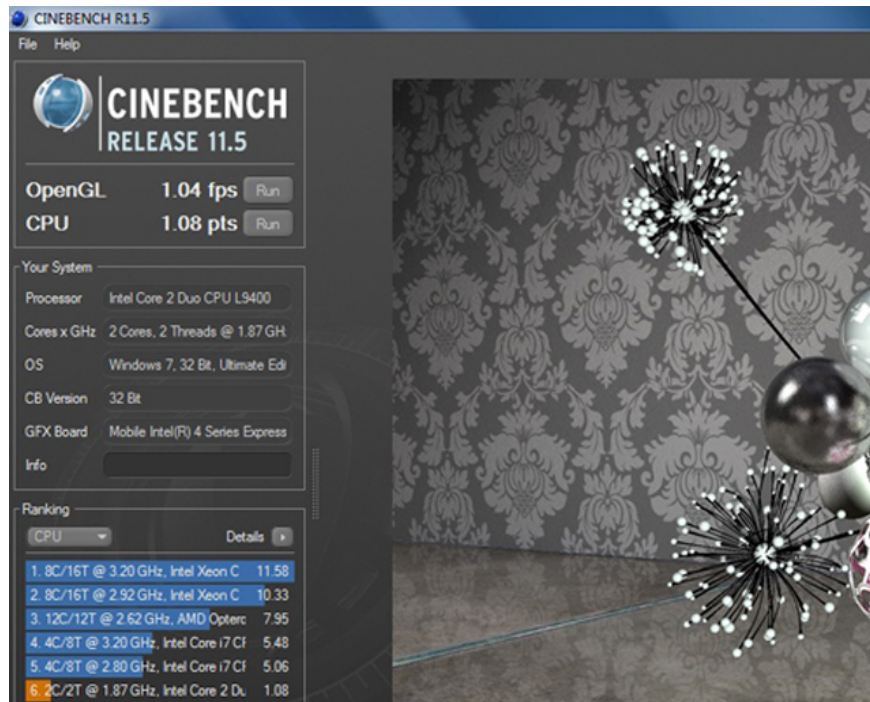
Scoring with PC Mark Vantage.

Continuing to use the PCMark Vantage program to evaluate overall power, the EliteBook 2530p scored 3,415 points, which is not bad compared to other models running low-voltage Core 2 Duo processors.



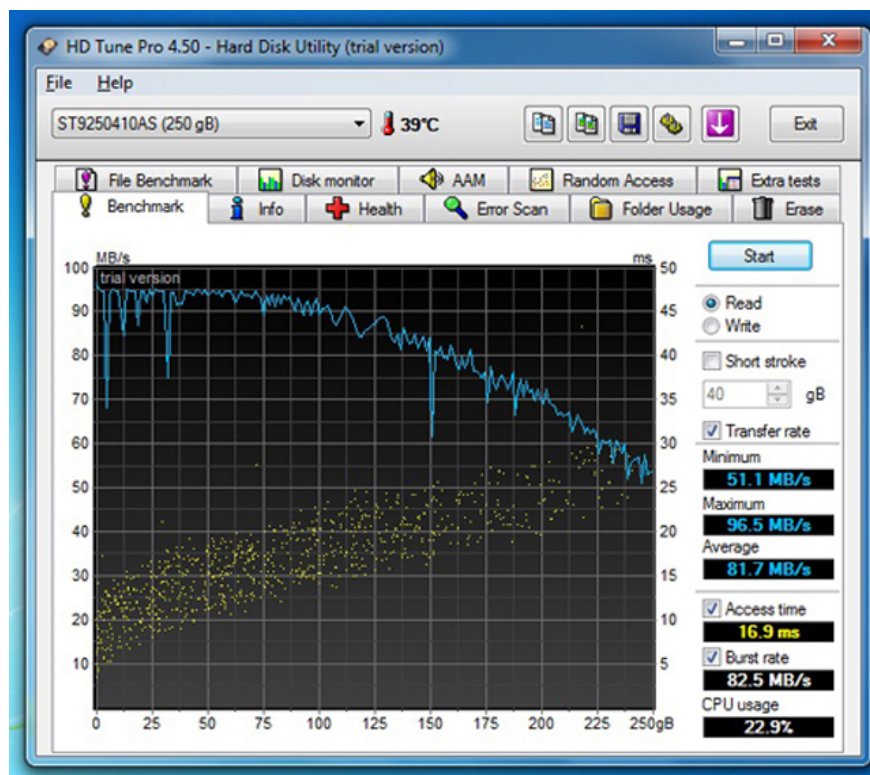
Score with 3D Mark 06.

Do not use discrete graphics card but instead of integrated graphics chip, so the 3D Mark 06 score of the machine is quite "modest" with 689 points, the number is quite low compared to the average of from 900 points to 1,000 points in the Laptops also use integrated graphics chips



Microprocessor scoring.

Continue using the Cinebench 11.5 program to evaluate the processor and try OpenGL. The result with microprocessor reached 1.08 points and graphics card with 1.04 frames per second.



Large hard drive.

The hard drive the EliteBook 2530p uses is 250GB of 7,200 revolutions per minute. In fact the average data readout is 81.7 MB / sec, which is higher than the average of 60MB / sec in universal drives at 5,400 rpm and approximate to the same speed drives. The current.

Part 1: Design, keyboard, Touchpad

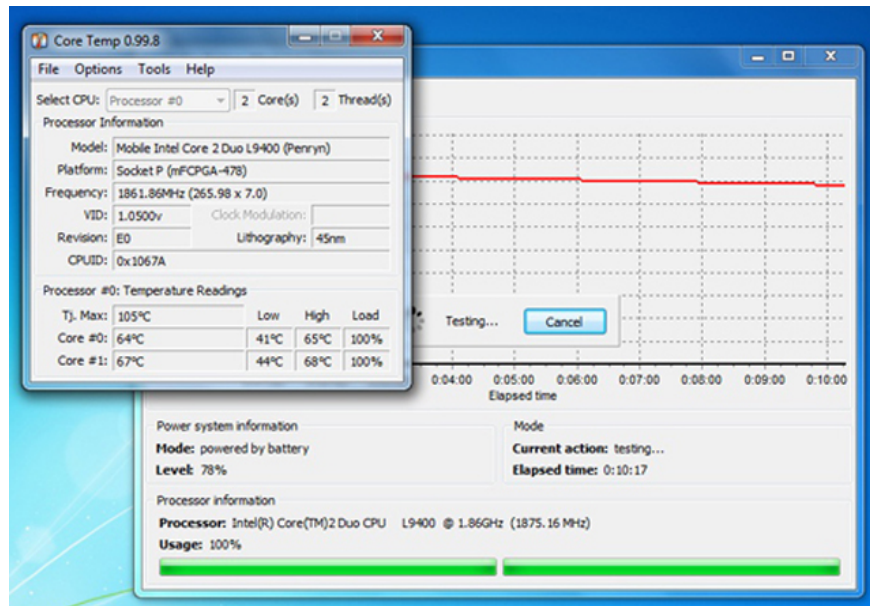
Part 3: Sound, heat sink, battery life

Radiators



Heat sink slot on the side of the machine.

The heat dissipation capability on the EliteBook 2530p is commendable. Thanks to the use of low-voltage microprocessor, a well-heated aluminum alloy shell and a well-ventilated case, this model keeps it cool even for long use. Unlike the usual hot models in the keyboard cover, the 2530p has a hot position opposite on the right side and also has a heat sink slot.



CPU temperature when running fullload about 10 minutes.

However, the device still has other minor errors but seems to be unforeseen because the VGA port is almost right on the heat vent, so this location is very hot. Especially the wires connected to this location are very hot so users need to pay special attention.

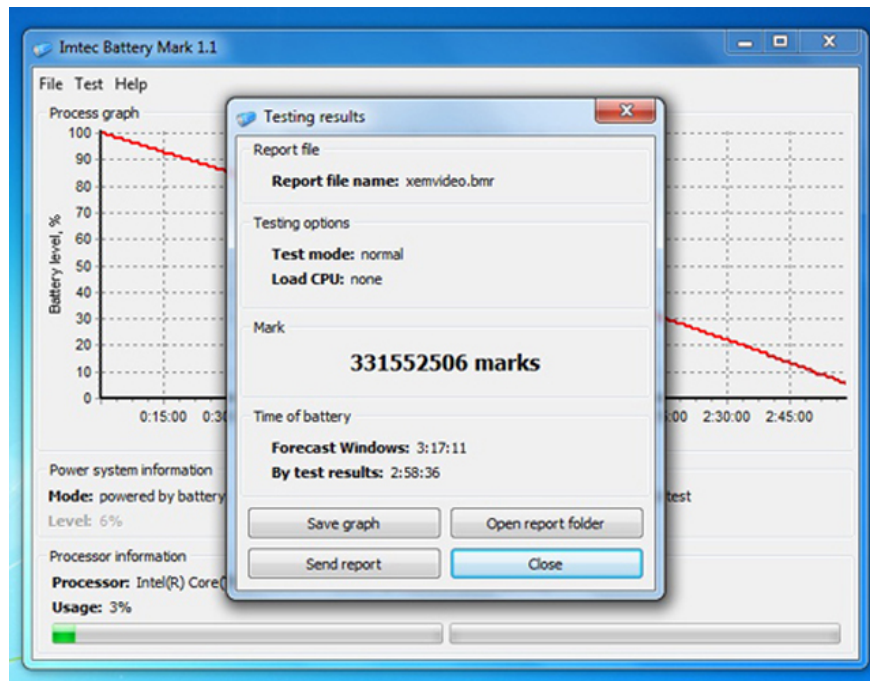
Battery life

The EliteBook 2530p uses the included 6-cell battery. Just like the advertising of the company, the machine gives a very fast charging time, only about 2 hours is fully charged from 7% when the whole machine is turned off or 2 hours 20 minutes when still in normal use.



The battery part of the device protrudes behind.

Experimental open Firefox loads 10 web pages and automatically reloads every 15 minutes, opens an online music player page and gives continuous playback, using headphones instead of the speakerphone and leaving the volume level at 70%. 50% light for the machine to run until it turns itself off (to 5%), this time reaches 4 hours and 10 minutes.



Time to use when watching HD movies is not as expected.

While testing the device to run a standard 720p HD movie and play it back continuously until it is off, turn off the Wi-Fi connection, use a headset instead of the speaker and put it at a volume of 70% (negative Windows Media Player program bar to 100%), 50% brightness for the device to run until it is turned off (with 5% battery level), this time reaches 2 hours 58 minutes.

These are not really bad numbers, but unlike the ads HP offered, the battery life is particularly high in the HD video playback test, although it is still about 45 minutes higher than mainstream laptops. The battery life of the company is reported to be 8 hours continuously, while the actual surfing test is more than 4 hours.

Sound

As a business notebook, the EliteBook 2530p has not been invested in audio. The volume even when maxed out is still quite small just enough personal entertainment in the room below 15m². The bass is not really clear while the sound also has no "clarity" needed to enjoy.

Part 1: Design, keyboard, Touchpad

Part 2: Screen, performance

You finished reading the article "[HP EliteBook 2530p review](#)" edited by the [TipsMake](#) team. We hope this article has provided you with many useful tech tips and tricks. You can search for similar articles on tips and guides. Thank you for reading and for following us regularly.

