

# How to zoom in maps, images in PowerPoint

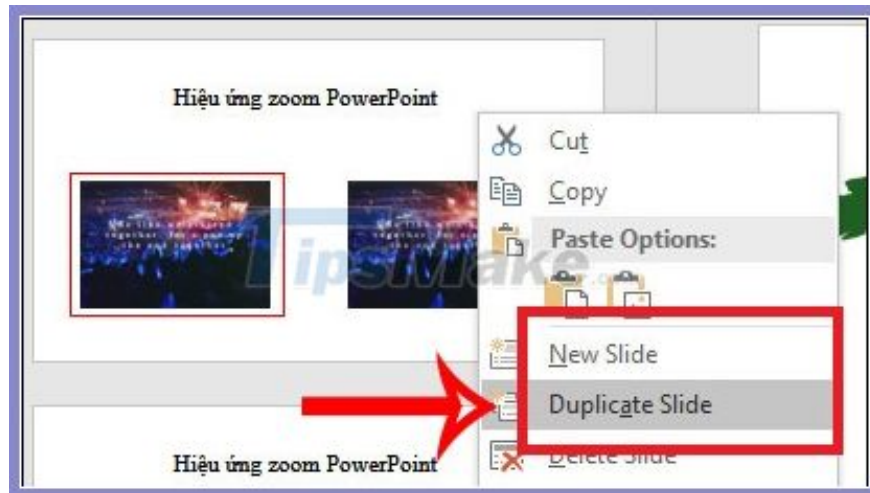
When you present a PowerPoint slide, you'll need to zoom in on a detail to emphasize that detail, or to let others see it clearly. You can zoom in on an image, or even part of the map.

Although there is a zoom feature in PowerPoint, it only zooms the slide, not zoom on something in the slide. If so, we can also add other effects to zoom in and out of details more effectively and professionally. The following article will guide you to read how to enlarge details in PowerPoint.

## How to zoom in detail in PowerPoint

### Step 1:

First of all you **insert a map** image or image you want to add a detailed zoom effect. Next, right-click on the slide and select **Duplicate Slide** to duplicate the slide.



### Step 2:

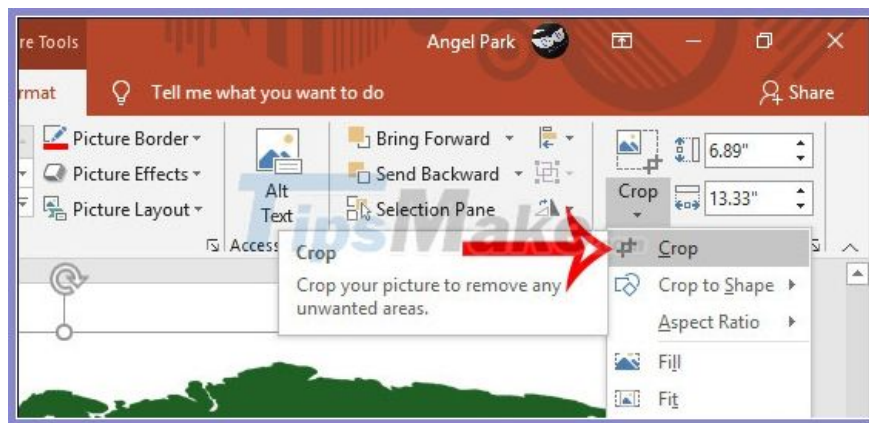
In the mirrored slide, we **choose the position we want to enlarge**, then click **Insert** and then choose **Shapes** , then click **the ellipse** . We **press Shift** and then hold the mouse to **draw a circle around the position to be enlarged**.

Next click on the circle and then look at the **Format** section , choose **Shape Fill> No Fill** to remove the border in the circle. Next click **Shape Outline** and **select the border color** and **border thickness** .

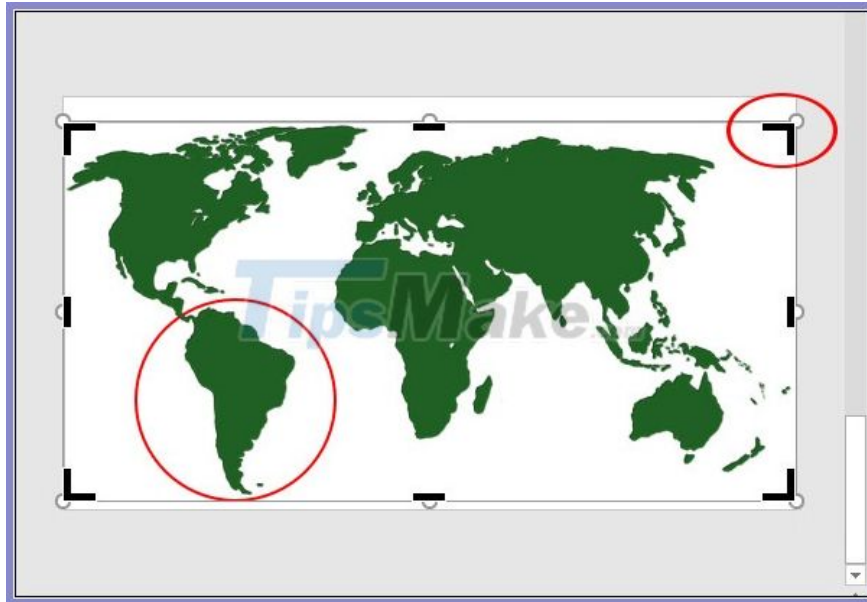


### Step 3:

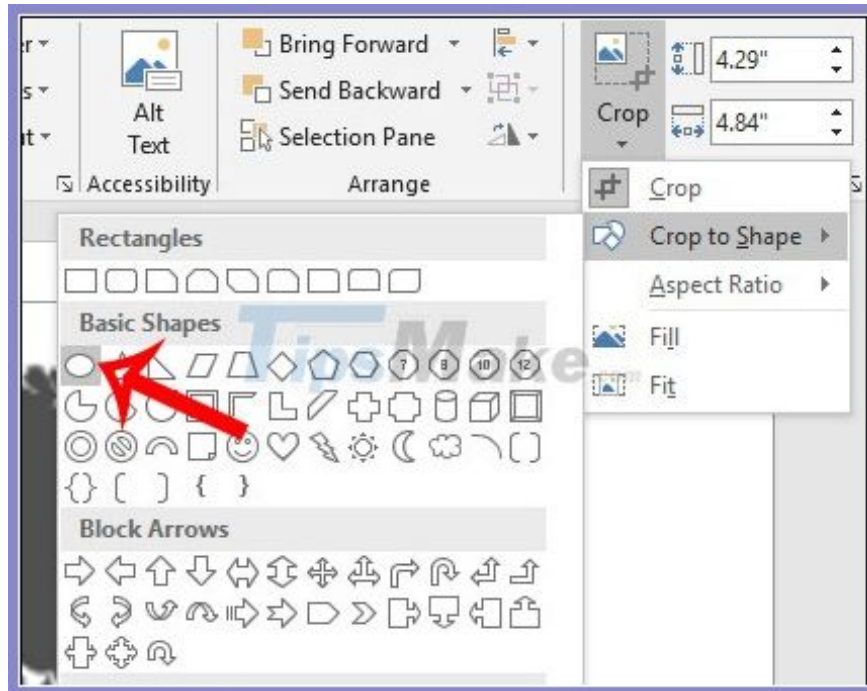
Next **click on the image** , then select **Format** and click **Crop** .



At this time around the image will **show borders with 4 black corners** as shown below. Then you **drag the frame closer to the red circle** .



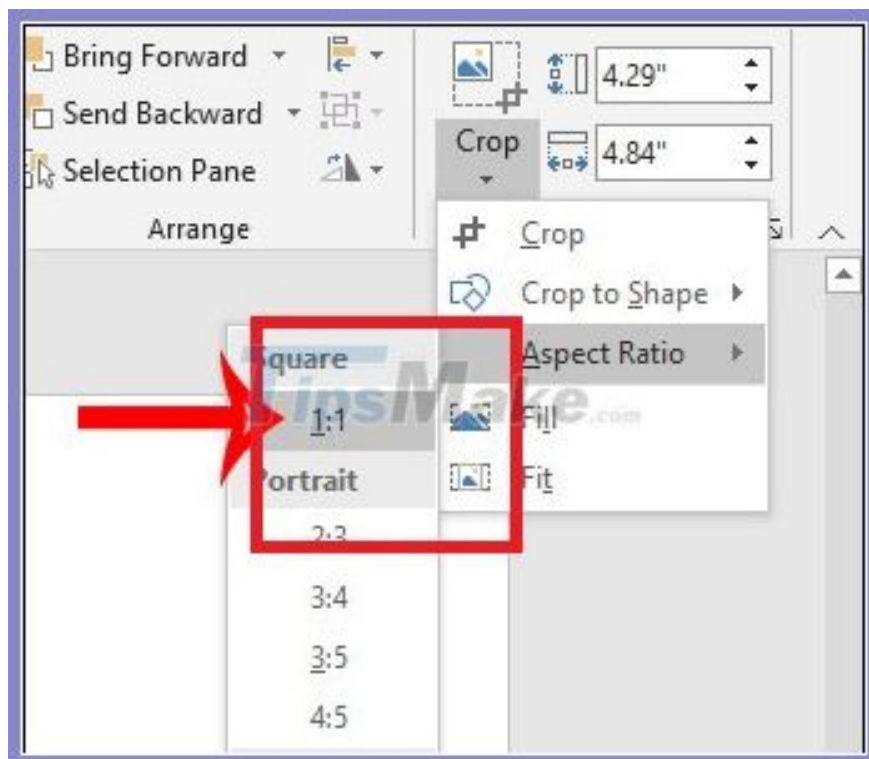
Keep clicking **Crop**, then choose **Crop to Shape** and choose the oval to crop the image in a circle.



Then the image will remain as below.



Continue to click **Crop** and choose the **1: 1** crop ratio .



#### Step 4:

Now you need to **move the light circle border close to the red circle** . Select the entire image, press **Ctrl + X** and then click on the **original slide to overwrite the original slide position** .



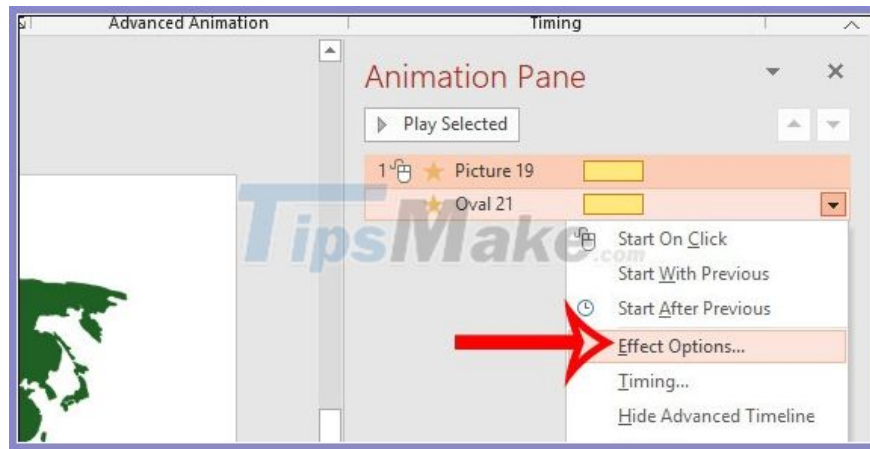
**Step 5:**

**Highlight the area where you need to zoom in** to select the newly pasted image, click **Animations** , expand the effect and choose the **Grow / Shrink** effect . You should now see that location in the zoomed map.

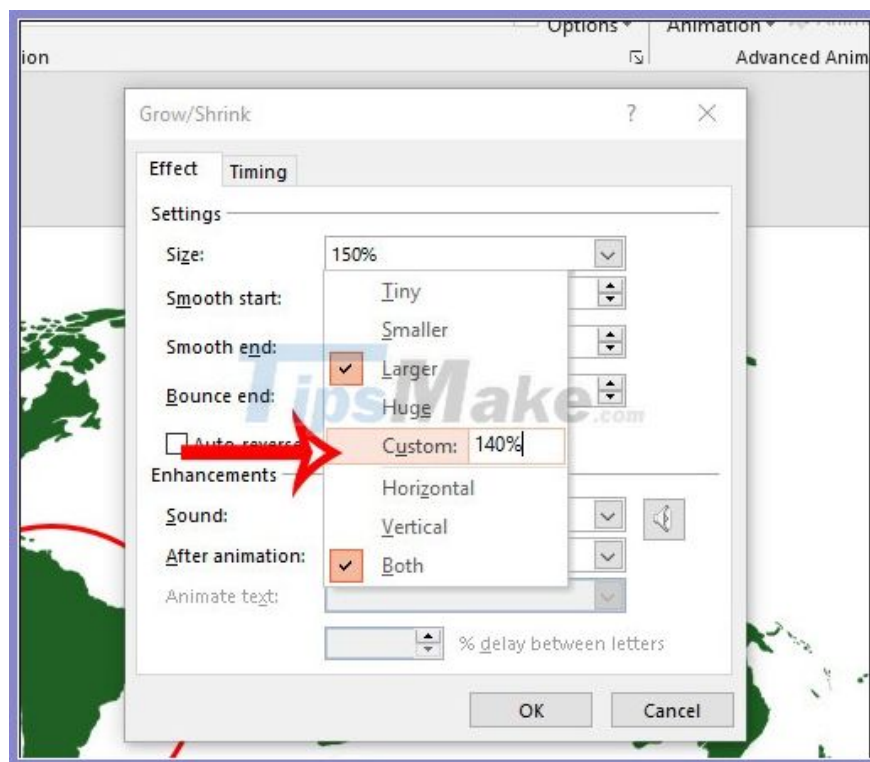


**Step 6:**

Click on the **Animation Pane** , press **Shift** and then **click on the image and enlarge effect** . Click on the **inverted triangle icon** and choose **Effect Options...**



Now we will **adjust how much zoom** you want. Enter the zoom level then press Enter and press OK to save.



### Step 7:

Click on **the red border**, then select **Add Animation** and choose **the Wheel effect** so that the circle appears around the map position.

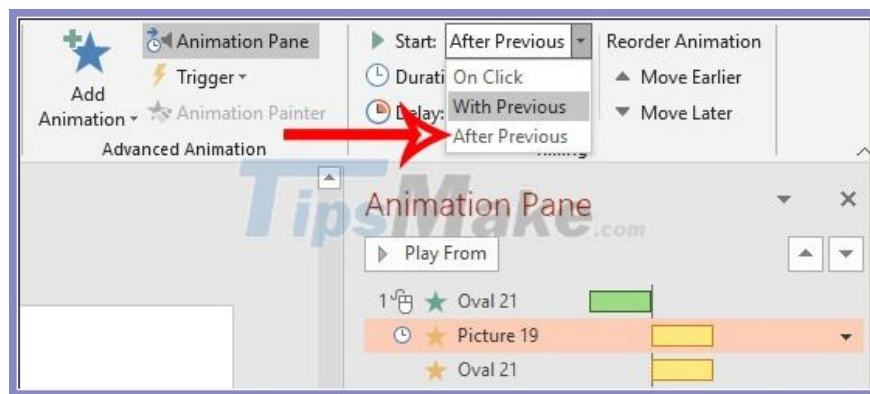
Now you will need to **move the Wheel effect to the top** to appear before the zoom effect, by moving to the top in **the Animation Pane interface** .



### Step 8:

Look at the image, then look at **the Timing section in Start**, select **After Previous** so that the zooming effect runs right after the circle effect shows, without clicking again.

Finally, just run a test slide to see the results are done.



You finished reading the article "**How to zoom in maps, images in PowerPoint**" edited by the [TipsMake](#) team. We hope this article has provided you with many useful tech tips and tricks. You can search for similar articles on tips and guides. Thank you for reading and for following us regularly.