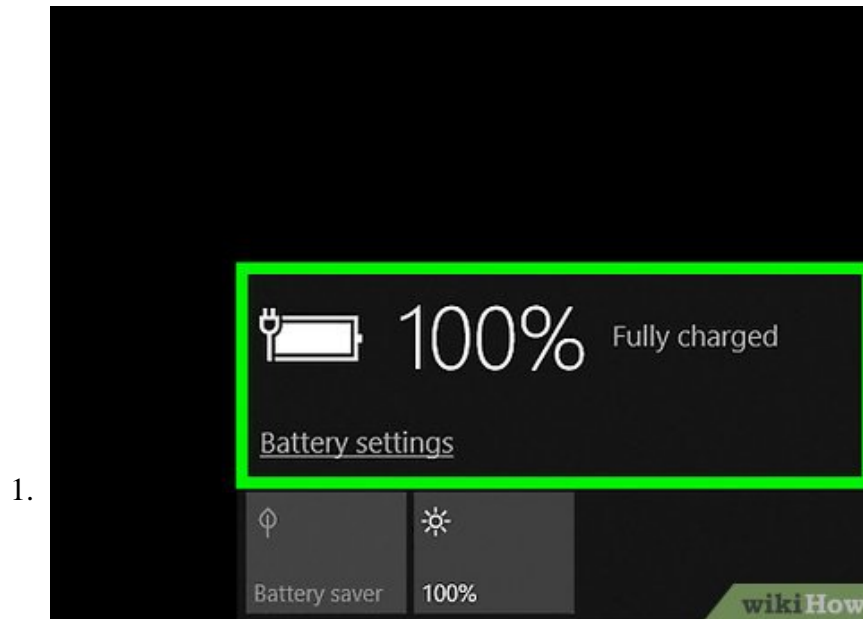


How to Wipe a Hard Drive in Windows 10

This wikiHow will teach you how to use the Windows 10 tools to remove all data from your hard drive. Plug your computer into a power supply. If you're using a laptop, you'll want to make sure you don't run out of battery power during this...

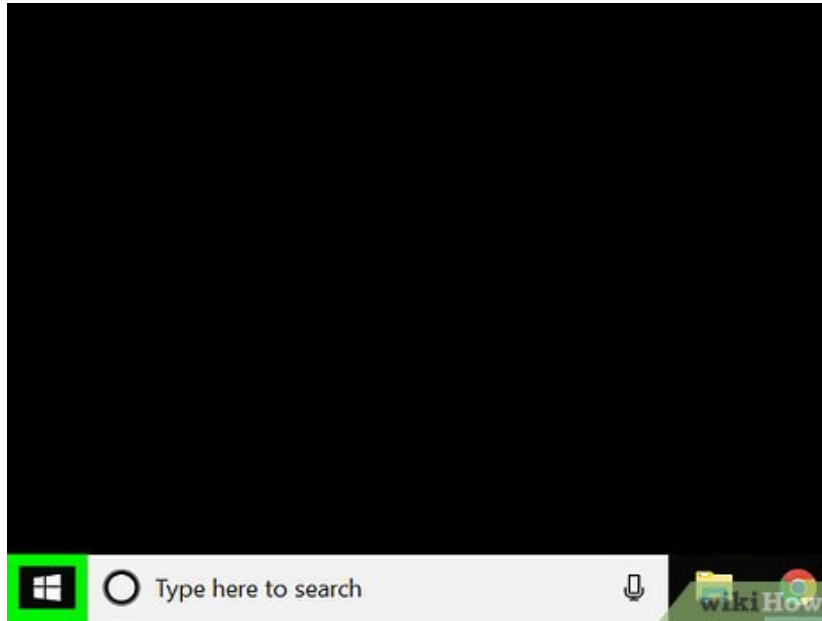
Method 1 of 2:

Resetting your PC

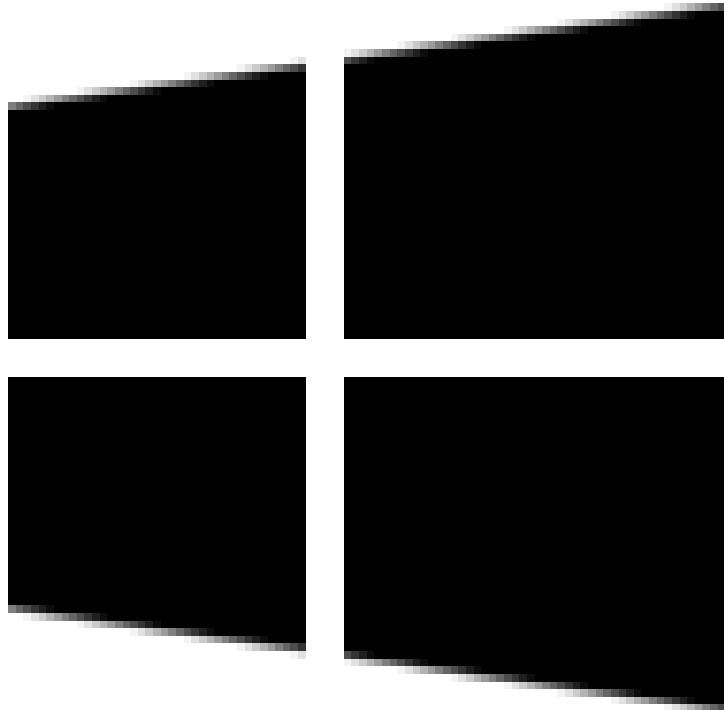


Plug your computer into a power supply. If you're using a laptop, you'll want to make sure you don't run out of battery power during this process.

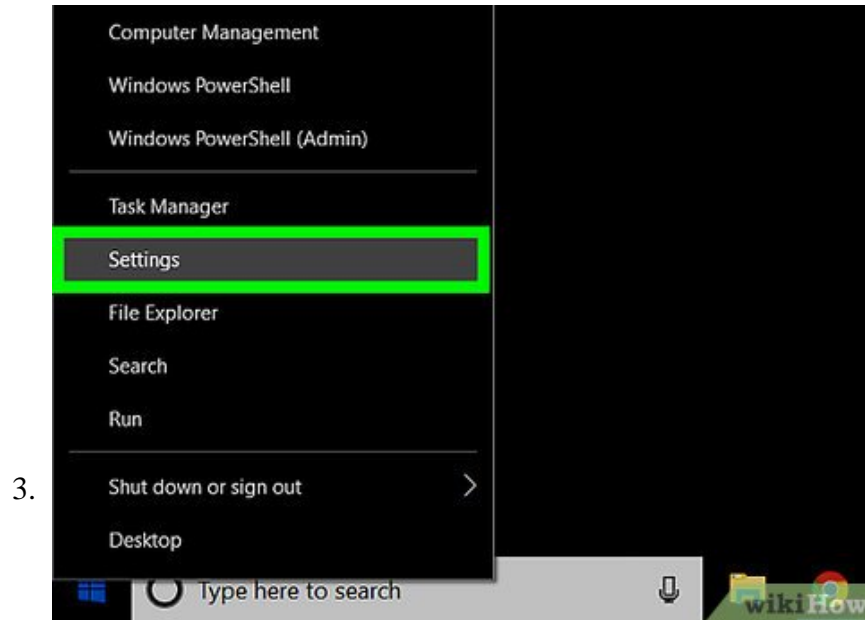
2.



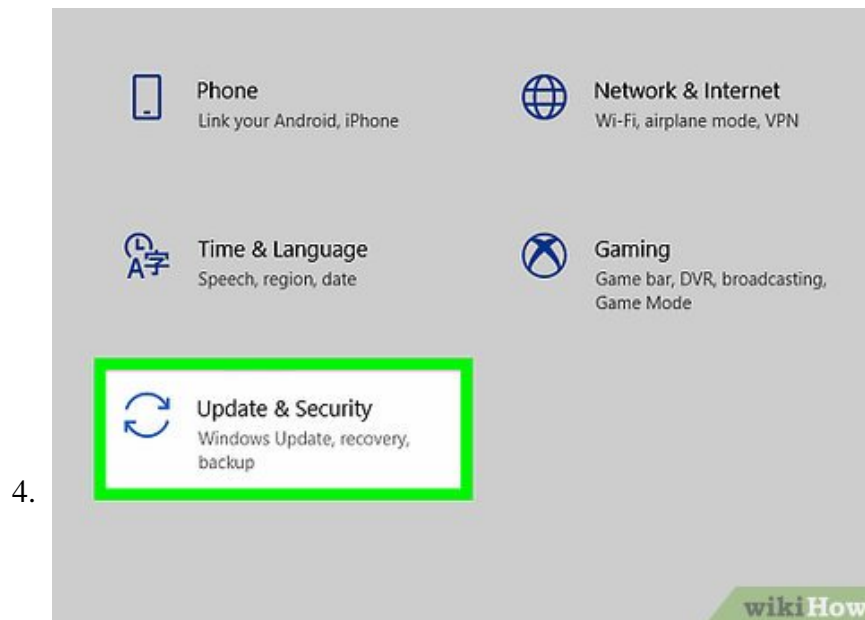
Right-click the



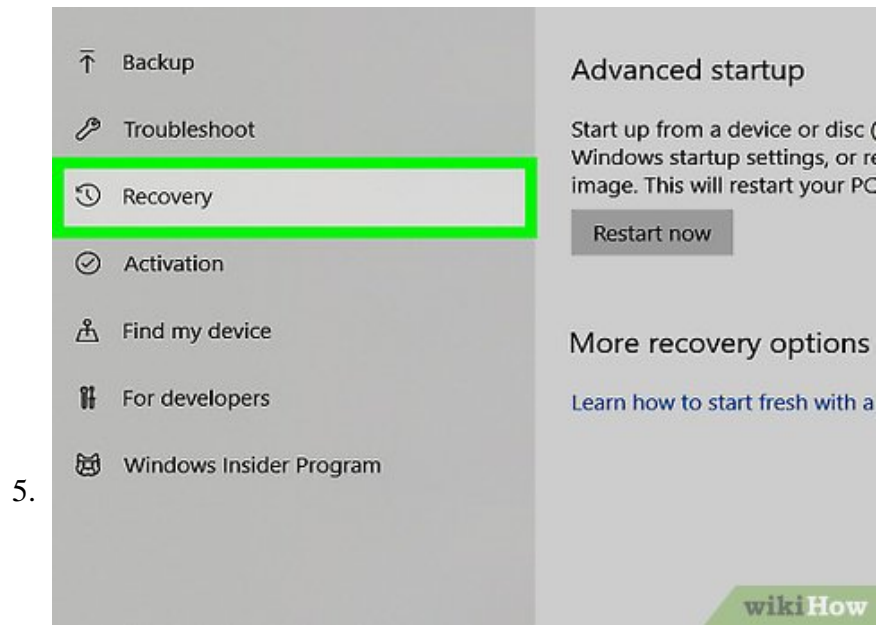
button. It's usually at the bottom-left corner of the screen. Use this method to delete all of your data off of the PC and install a fresh version of Windows.



Click **Settings**. It's toward the bottom of the menu.



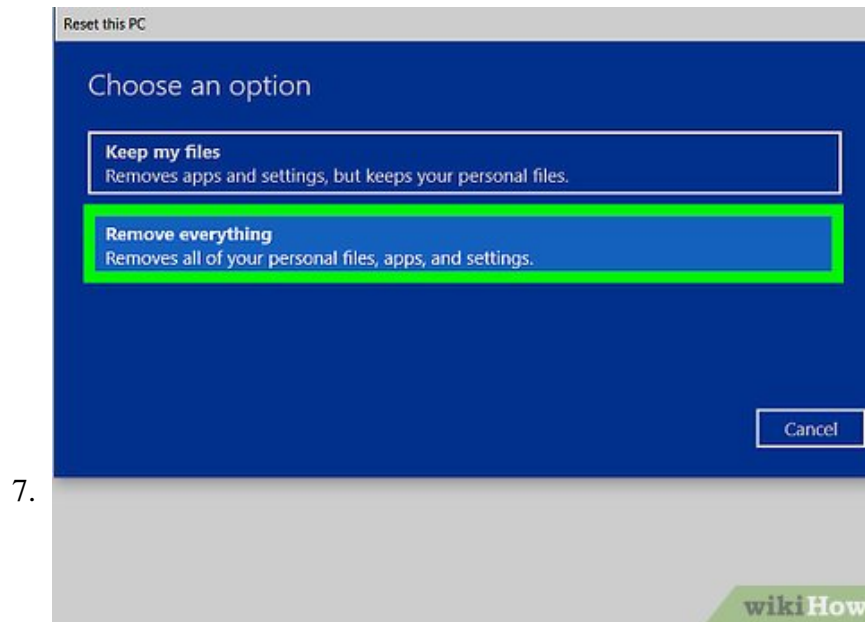
Click **Security & updates**. It's the icon with two curved arrows.



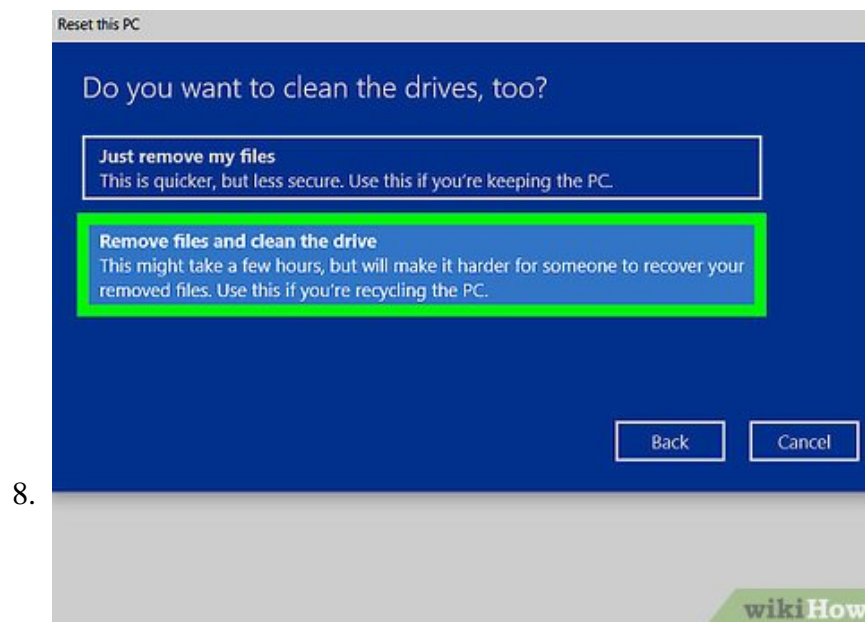
Click **Recovery**. It's in the left column.



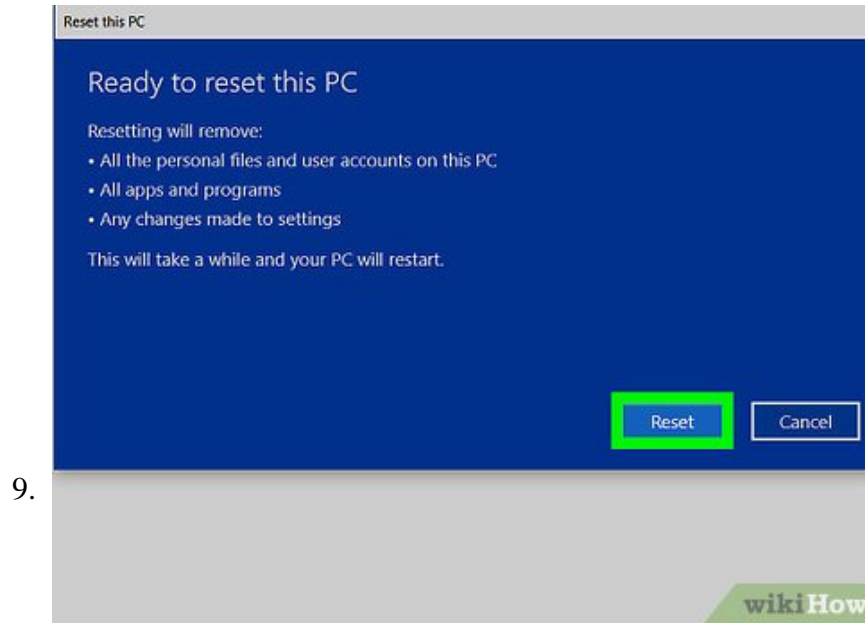
Click **Get started** under 'Reset this PC.' It's the first button in the main panel.



Click **Restore factory settings**. This will erase the contents of the hard drive and then reinstall the factory version of Windows.



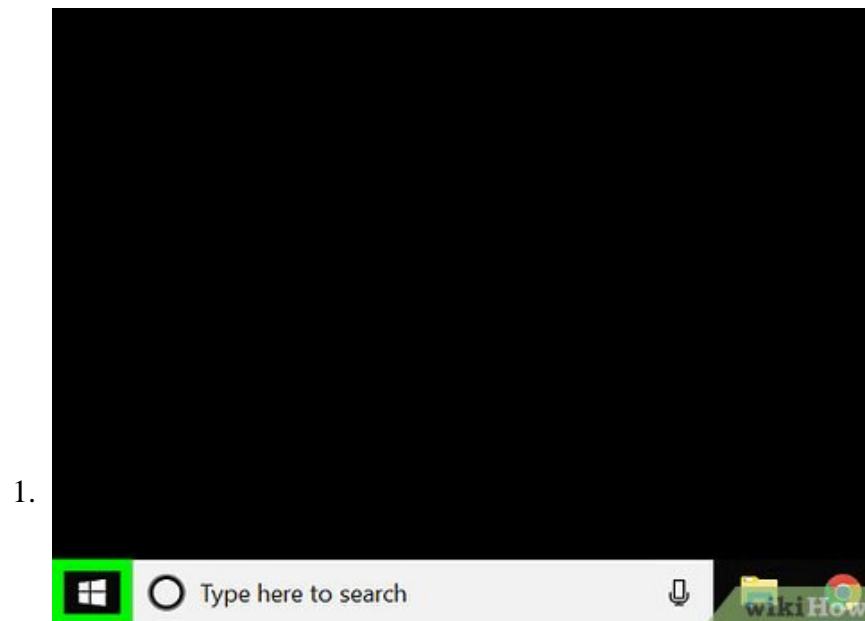
Click **Remove files and clean the drive**. This formats the drive so that it will be more difficult for someone to recover your deleted data.



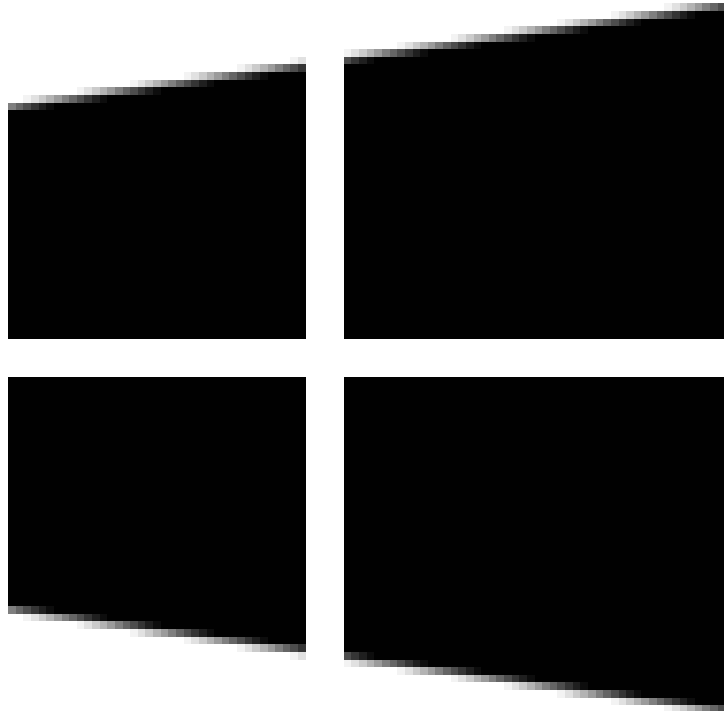
Click **Reset**. Your hard drive will now begin to format and then Windows will be reinstalled. This process may take several hours.

Method 2 of 2:

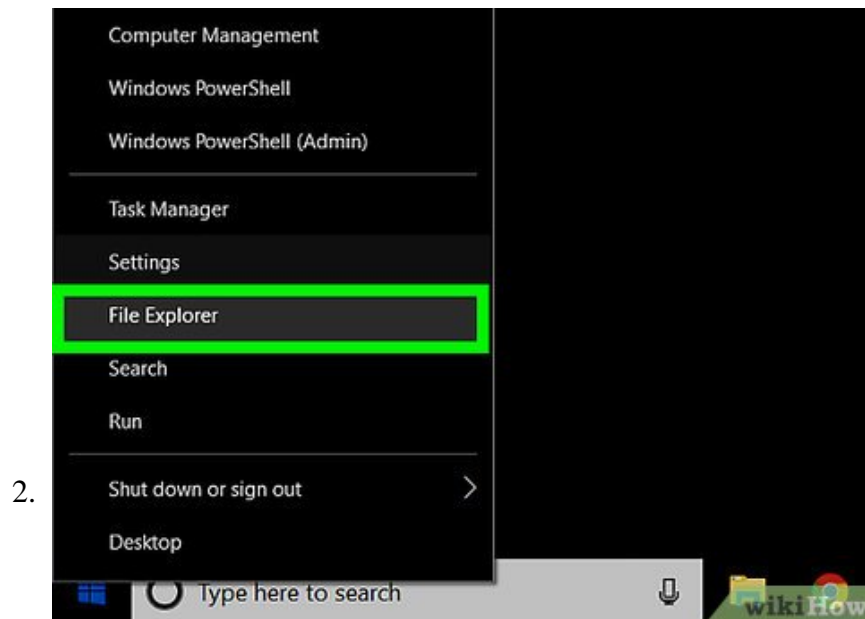
Formatting a Hard Drive



Right-click the

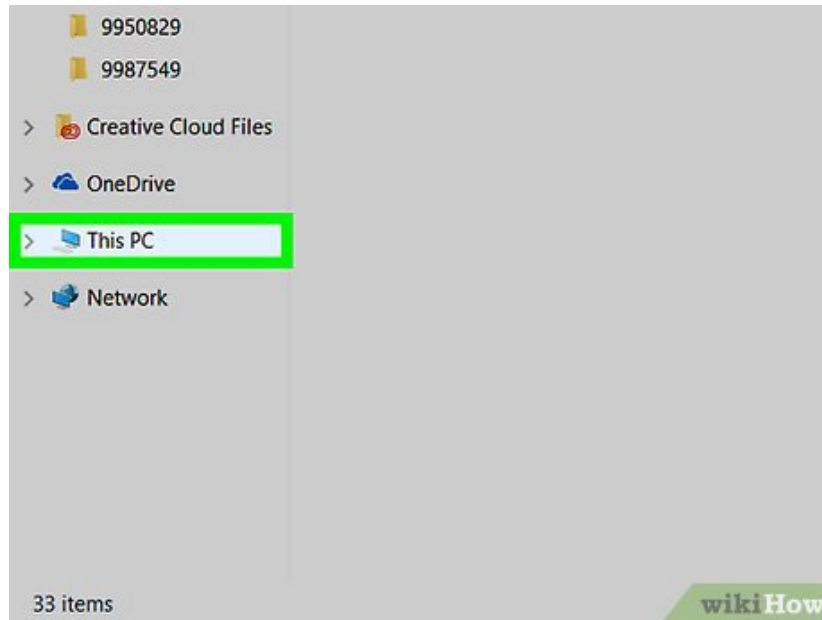


button. It's usually at the bottom-left corner of the screen. Use this method to wipe the data off of a different hard drive than the primary one, such as an external drive.



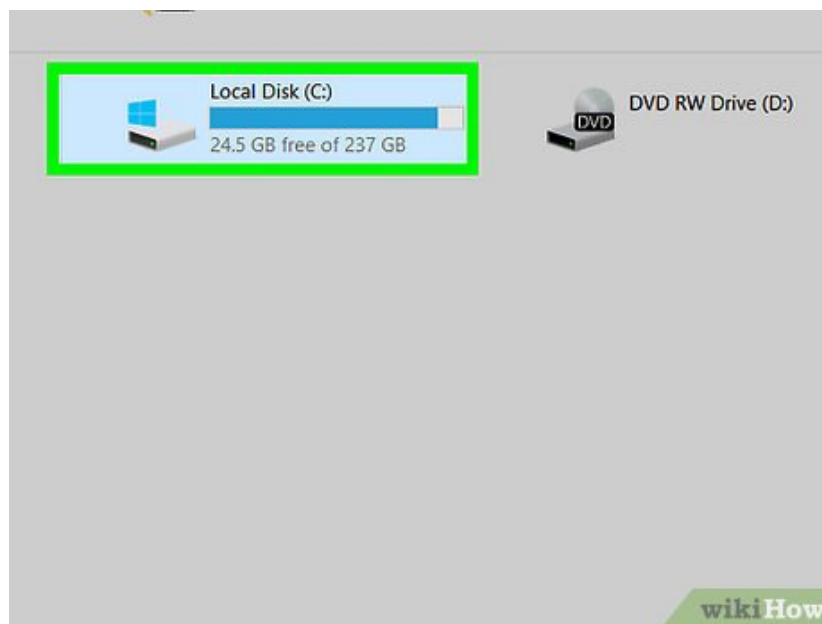
Click **File Explorer**. It's toward the bottom of the menu. This opens your computer's file browser.

3.



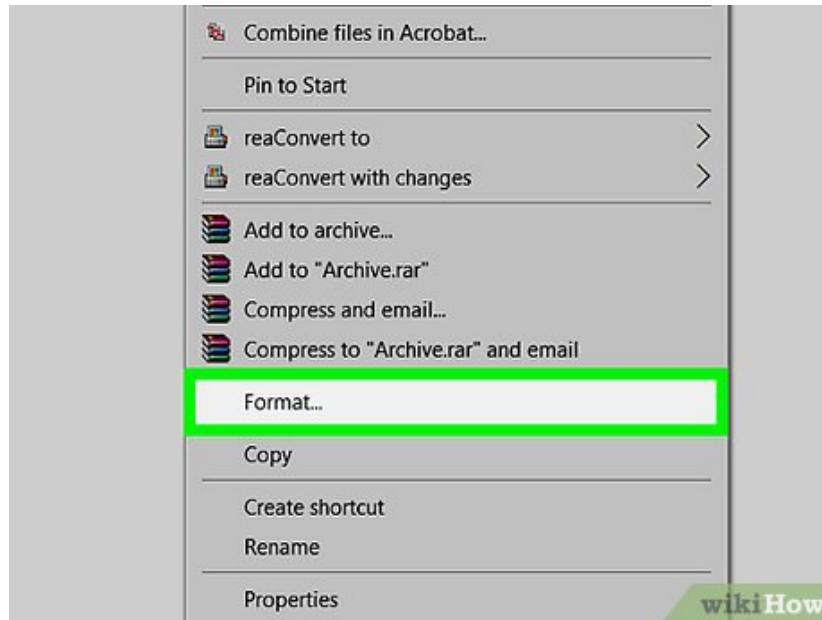
Click **This PC**. It's in the left column. A list of folders and hard drives connected to the PC will appear.

4.



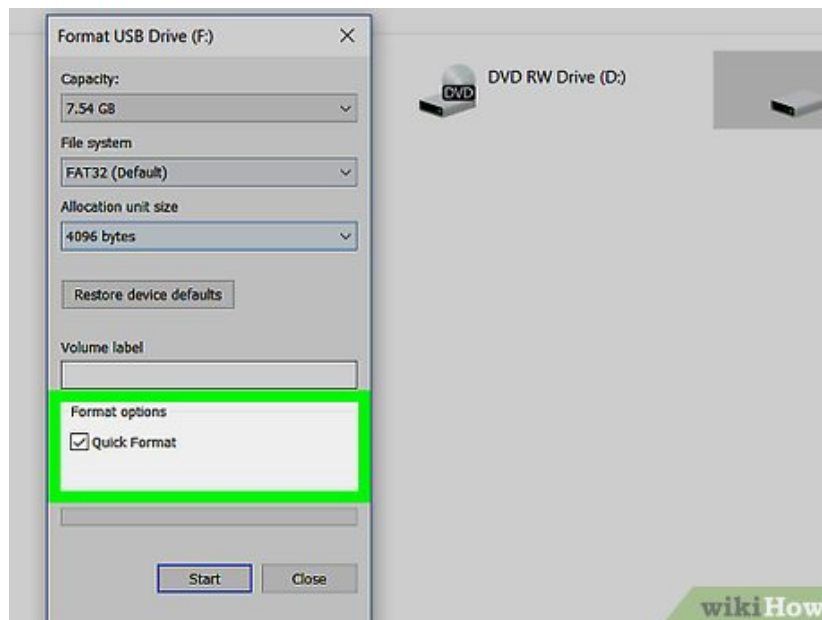
Right-click the drive you want to format.

5.



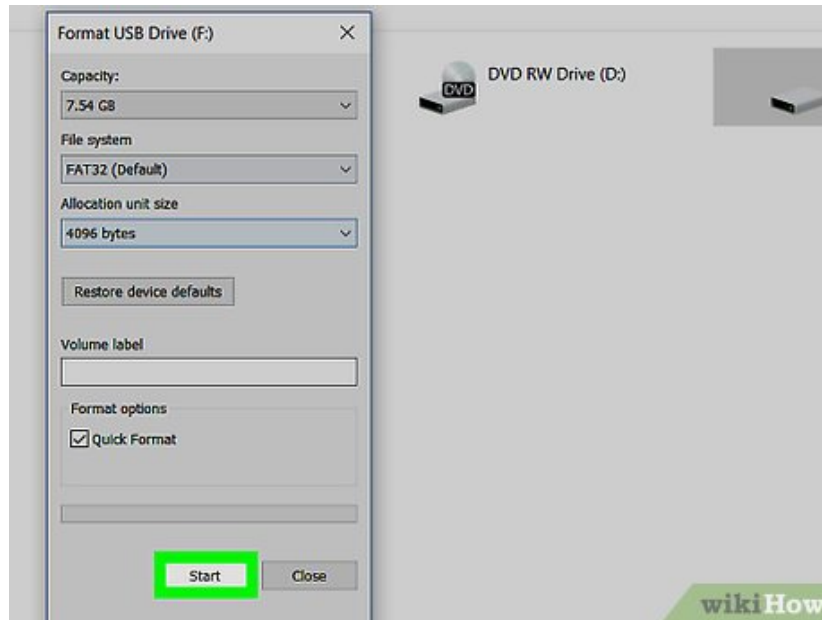
Click **Format**.

6.



Choose whether to quick format. You can save time by checking the box next to 'Quick Format,' but this option makes it easier for someone to restore your deleted data with the right software.^[1]

7.



Click **Start**. The data on the hard drive will now be deleted.

You finished reading the article "**How to Wipe a Hard Drive in Windows 10**" edited by the [TipsMake](#) team. We hope this article has provided you with many useful tech tips and tricks. You can search for similar articles on tips and guides. Thank you for reading and for following us regularly.