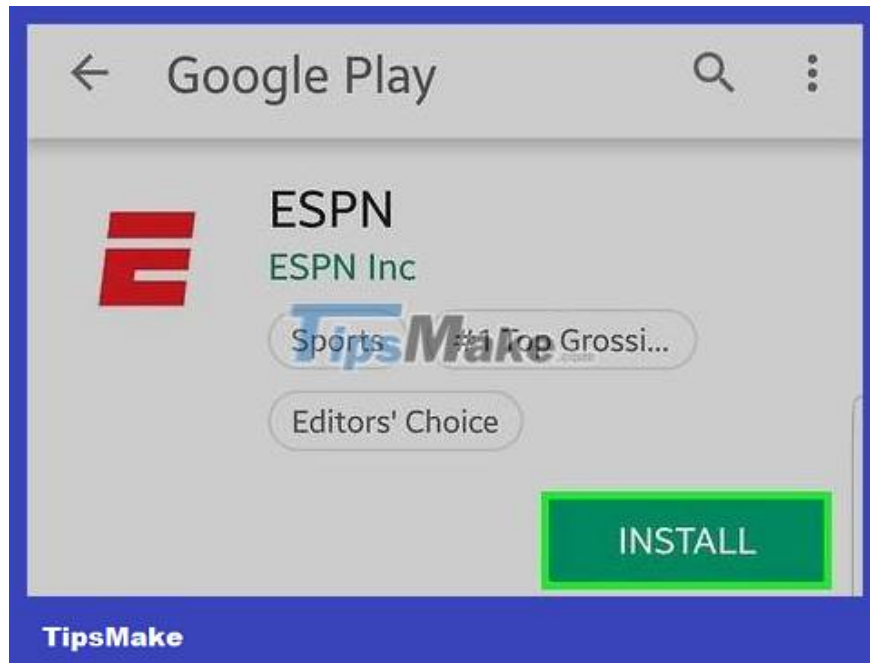


# How to Watch ESPN Online

ESPN is one of the most popular cable television channels in the world, showing a variety of sports channels throughout the day. If you subscribe to ESPN with your cable provider, you can sign in to the ESPN app or website using the account information provided to watch ESPN. If you haven't signed up yet, you can try using a third-party viewing app like Kodi. This article will show you how to watch ESPN online via the Internet.

## Use the official ESPN app



**Download the official ESPN app.** Follow these steps to download and install the official ESPN app for iPhone, iPad and Android tablets and phones:

Open **the App Store** on iPhone and iPad or **Google Play Store** on Android smartphones and tablets.

Tap **Search** (Search, iPhone only)

Type " *ESPN* " into the search bar.

Tap **GET** or **Install** next to the ESPN app.



**Open the ESPN app.** The ESPN app has a red "E" icon on a white background. You can tap this icon on the home screen or app menu, or tap **OPEN** in the App Store or Google Play Store after downloading and installing.

The first time you open ESPN, the app may ask if you want it to access your photos and media files, as well as your device's location. Tap **Allow** , or Allow only when using the app to continue.



**Tap Sign Up or Log In .** If you already have an ESPN account, you can tap **Log In** , fill in the username or email address and password associated with your account to sign in. If you don't have an account, tap **Sign Up** , enter the email address and password you want to set, then tap **Sign Up** to create an account.

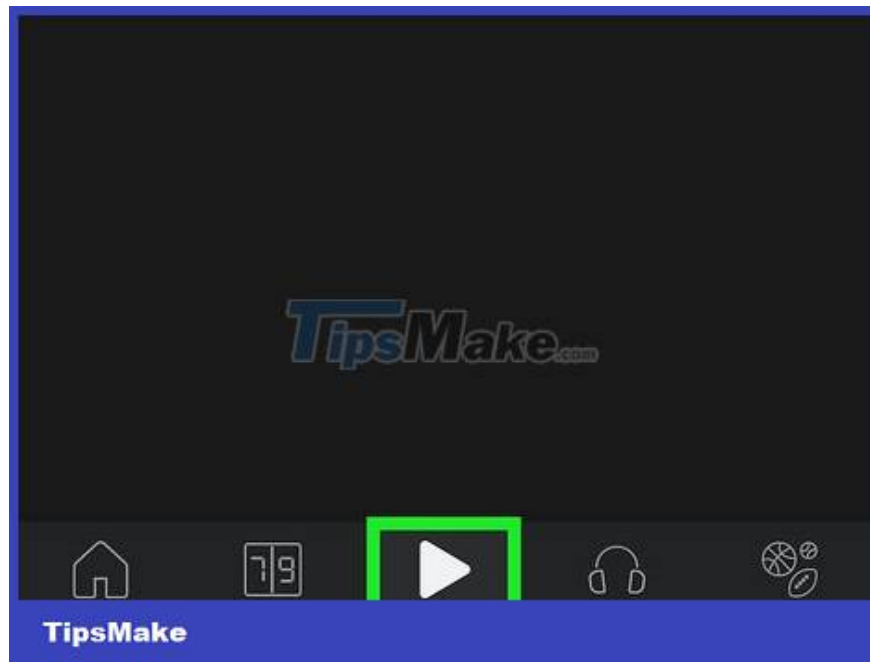


**Tap your preferred league and tap Next .** The first time you log in to ESPN, the app will ask you to tap your favorite league (such as NFL, NHL, NBA, MLB, UFC, etc.). Tap on the tournaments you want to receive notifications for. Then tap **Next** in the lower right corner.

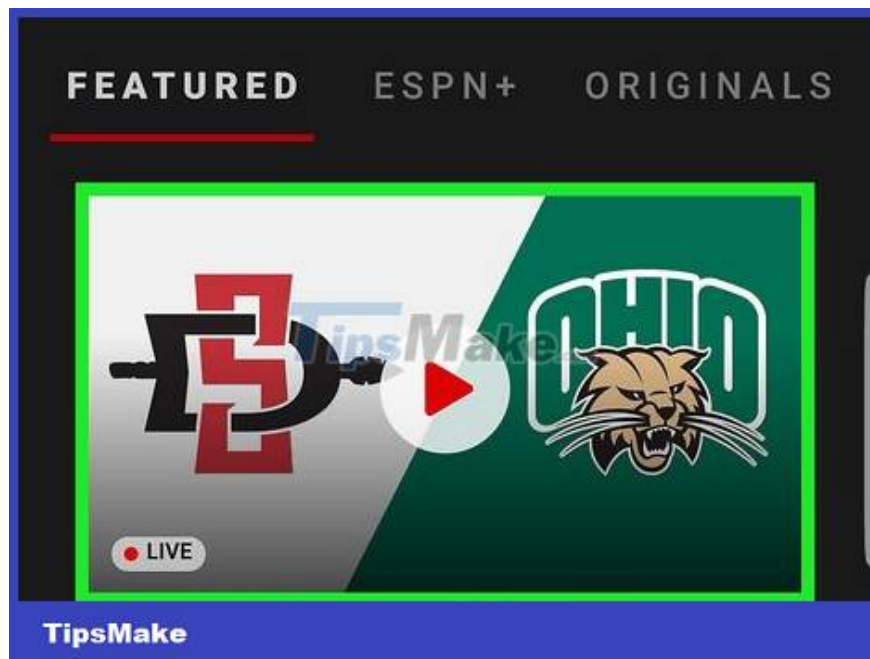
Or, you can tap **Skip** in the lower right corner if you don't want to receive notifications for any tournaments.



**Tap on your favorite team and tap Finish .** Tap on one of the leagues listed on the left to select a specific sport. Then touch the icon of your favorite team. You can choose as many teams as you like. Tap **Finish** in the lower right corner when you're done making your selection.

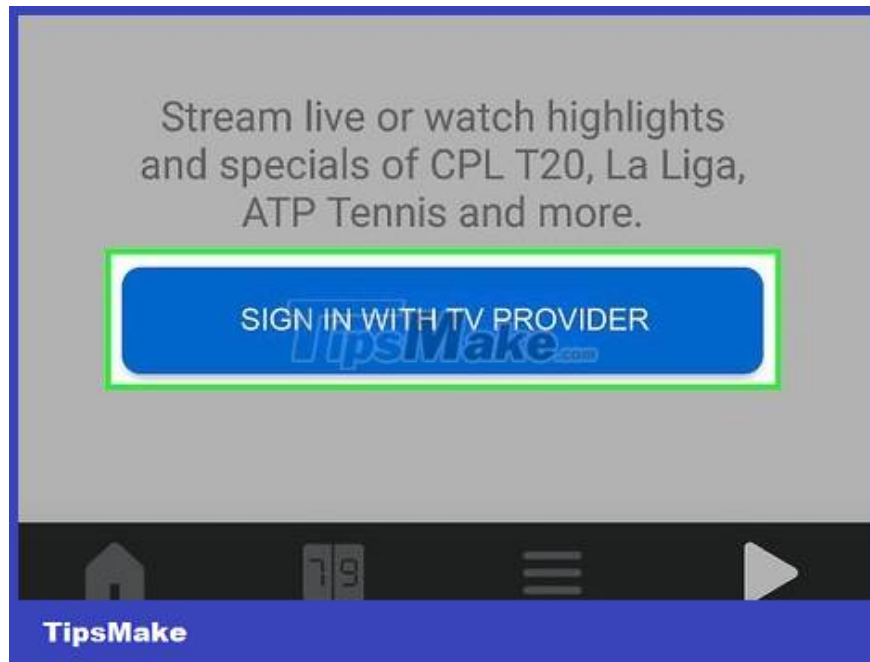


**Tap the Watch icon .** This button is located at the bottom of the screen. It's next to an icon that looks like a triangular 'View' button.

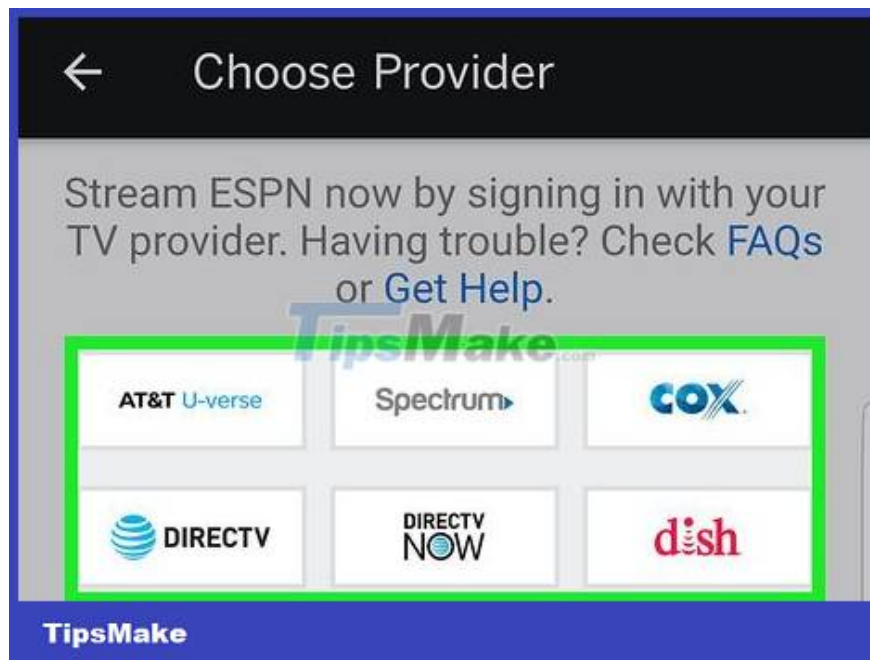


**Tap a video.** There are more live ESPN videos at the top of the page. You can scroll down to watch early airing TV episodes and short videos. You can also browse videos by sport or team.

Content labeled "ESPN+" requires a paid subscription to view.



**Tap Sign In with TV Provider (Android only).** On Android, you can preview the video a few minutes before signing in using your TV provider's information. If you're allowed to preview videos without signing in, tap the blue **Sign In with TV Provider (or Manage TV Provider)** button to sign in.

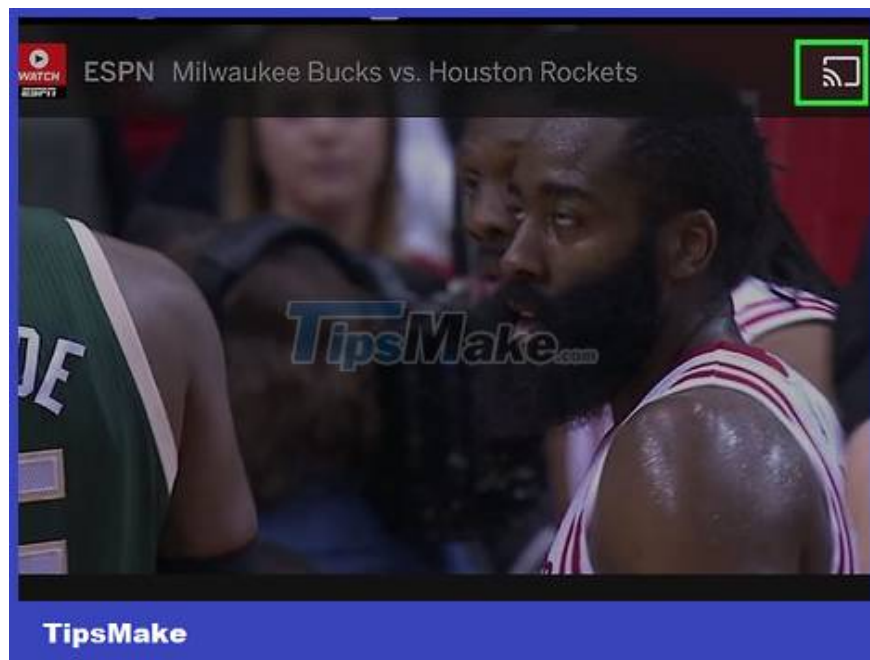


**Tap on your TV provider.** Tap on the company from which you receive live TV. This could be your satellite or cable TV provider (such as Xfinity, Verizon Fios, CenturyLink, DirecTV, Dish) or a live TV streaming service (such as Hulu+, YouTube TV, Sling TV).

If you don't have a TV provider, you can tap **Get a TV Provider** to see a list of live TV services you can subscribe to. This includes Internet viewing services and cable and satellite TV providers in your area.

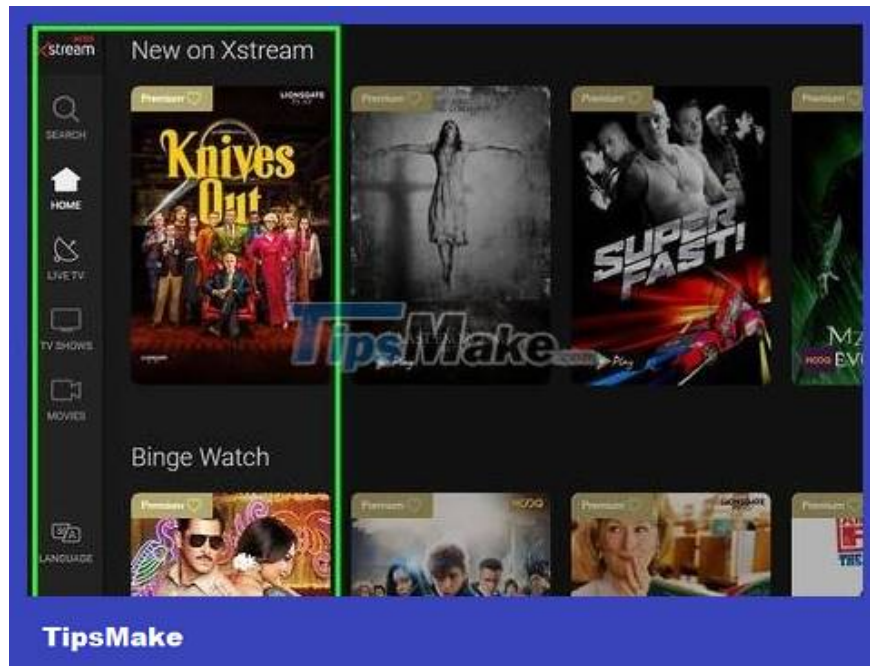


**Enter your TV service provider's account information.** In some cases, the ESPN app can find the TV service provider over the wireless Internet. Otherwise, enter the username and password associated with your TV service provider account to confirm your paid subscription to your TV service provider.



**Tap to broadcast to smart TV (if desired).** If you have a smart TV that supports Smart Cast, you can tap the icon that looks like an over-the-air TV screen to cast the video to the TV. This icon is located in the upper right corner of the application.

**Use an app to watch TV**

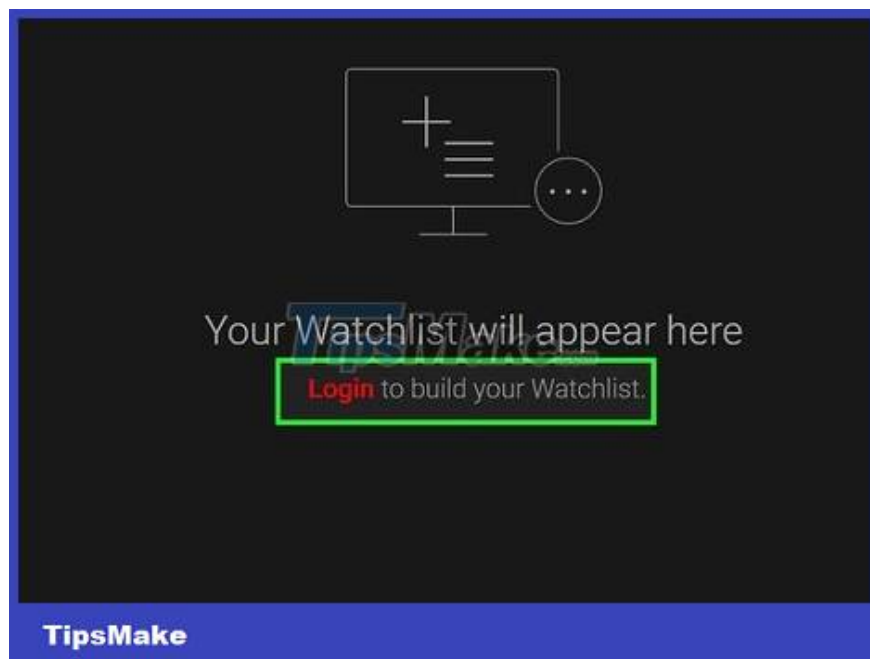


**Open the live TV viewing application.** Most cable and satellite TV service providers have applications that allow you to download and watch live TV over the Internet. Some applications include Xfinity Stream, Fios TV, DirecTV App and Dish Anywhere. If you don't watch TV through a cable or satellite TV provider, you can subscribe to a TV streaming service like Hulu +, YouTube TV or Sling TV.

You can download these TV viewing apps from the App Store on iPhone and iPad, or the Google Play Store on Android smartphones and tablets.

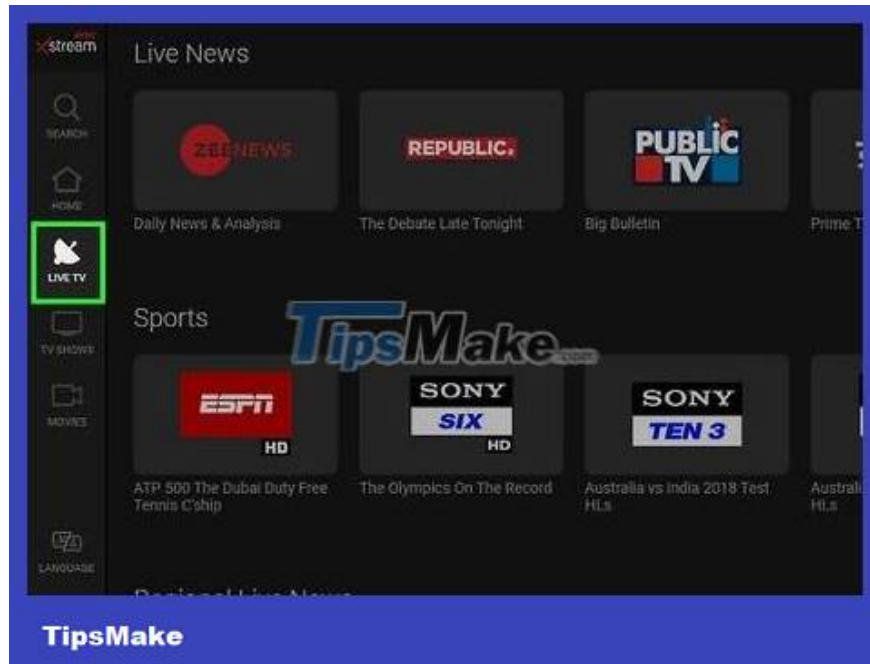
You can also watch live TV using a web browser at the official website of your TV viewing service provider.

Talk to your TV provider to make sure you're subscribed to a TV package that includes ESPN.

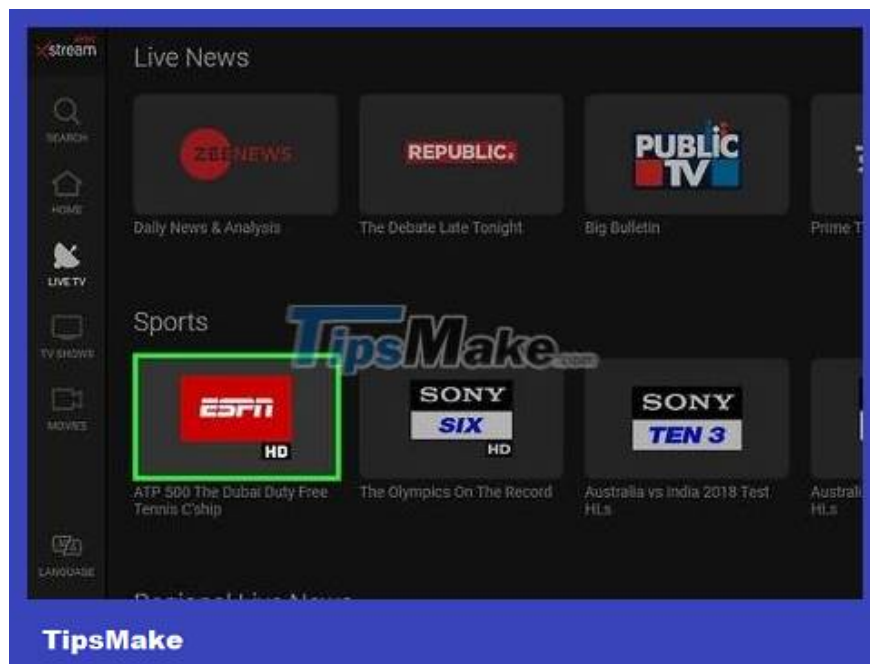


**Sign in to your account.** Enter the username or email and password associated with your TV service provider to log in to the live TV viewing app.

For cable and satellite TV viewing apps, you may need to create a new account. To do this, tap **Sign Up** , **Create account** or something similar. Then fill out the account information form, your username or email address, and desired password to create an account.



**Tap on the option to view TV listings.** Each app is a little different, but usually there will be tabs that you can tap to see different viewing options at the bottom. Tap the recording option as **TV** , **Live** , **Live TV** , **Guide** , **Watch Now** or something similar.



**Scroll down and tap an ESPN channel.** The TV channel list will vary according to different service providers. Scroll down until you find an ESPN channel, then tap it. This is the step that starts watching the channel, or displays a pop-up with a **Watch** , **Stream** button or something similar. Tap the option to view the channel.

There are many ESPN channels. The TV package to which you have a paid subscription may not have all the channels. Ask your TV service provider what packages are available to choose from.

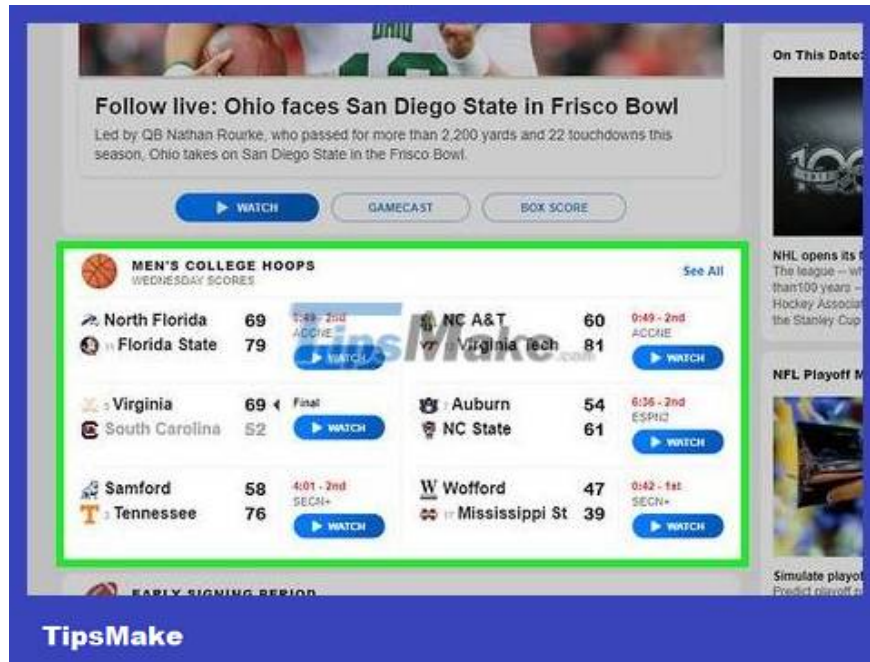
**Visit ESPN.com**



**Visit <https://www.espn.com> using a web browser.** This is the official website of ESPN.



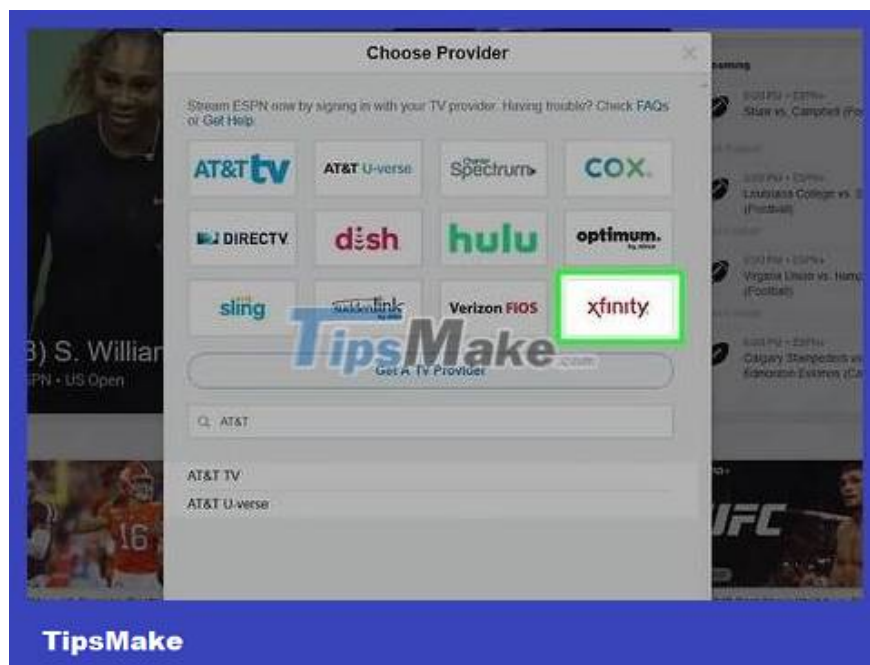
**Click Watch .** This tab is located to the right of the menu bar near the top of the browser window.



**Click a video.** There are more live ESPN videos at the top of the page. You can scroll down to watch early airing TV episodes and short videos. You can also browse videos by sport or team.

Content labeled "ESPN+" requires a paid subscription to view.

Programs that do not have a key icon next to or below them can be opened and viewed online immediately without any additional information or login required.

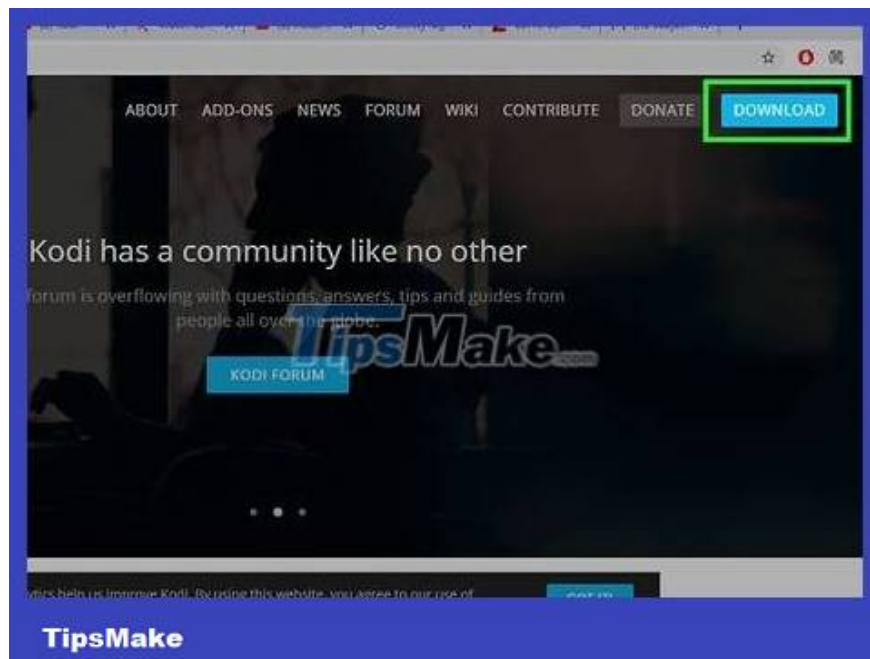


**Click on your TV provider.** Tap on the company from which you receive live TV. This could be your satellite or cable TV provider (such as Xfinity, Verizon Fios, CenturyLink, DirecTV, Dish) or a live TV streaming service (such as Hulu, YouTube TV, Sling).



**Enter your TV service provider's account information.** In some cases, the ESPN website can find television service providers over the wireless Internet. Otherwise, enter the username and password associated with your TV service provider account to confirm your paid subscription to your TV service provider. The video will start streaming as soon as your TV service provider's account is authenticated.

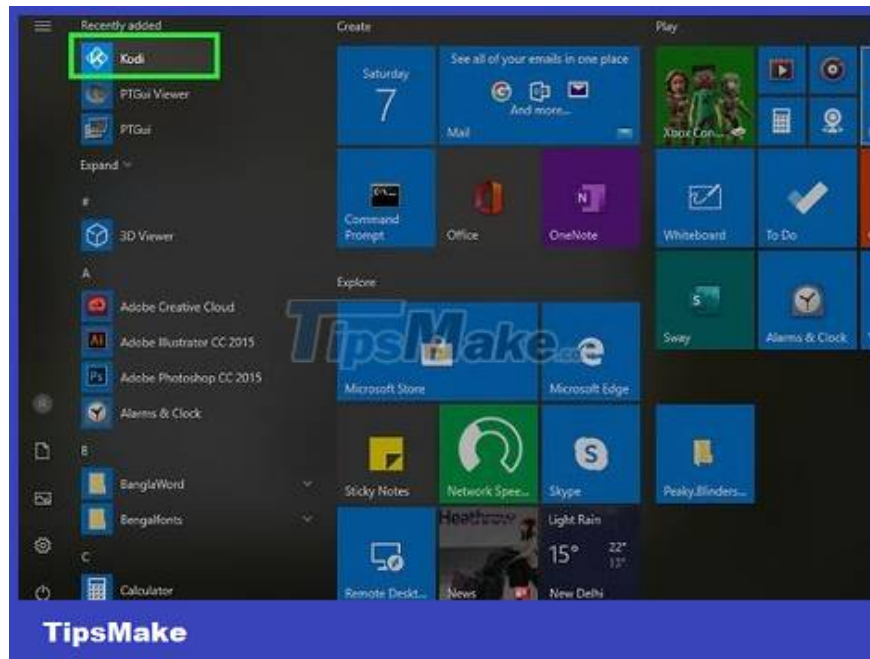
## Use Kodi



**Download and install Kodi.** Kodi is an open source free media file viewing and playing application. You can download it for Windows and macOS at <https://kodi.tv/> , from the Google Play Store on Android devices, or from TweakBox on iPhone and iPad. This app is also available on Amazon Fire Stick.

This may not be possible in some areas. You should use a VPN when watching TV channels via Kodi.

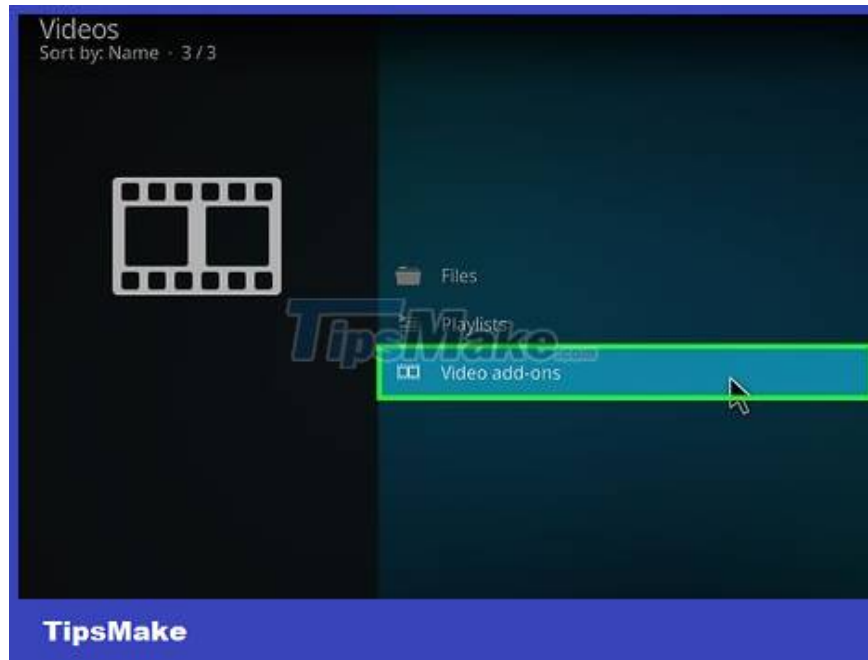
Kodi add-ons are likely to change. There is a possibility that you cannot install the required add-on to watch ESPN on Kodi.



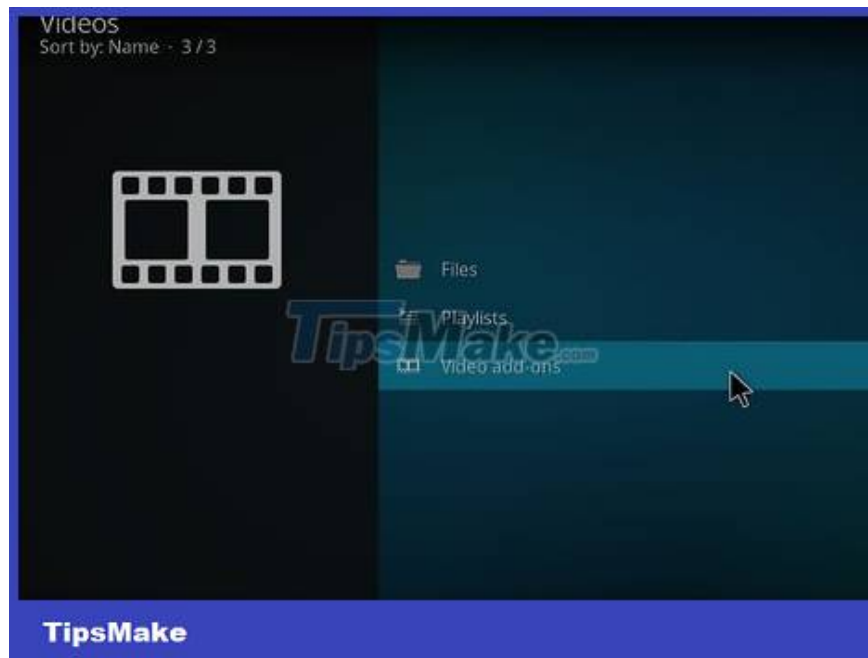
**Open Kodi.** Kodi has a white "K" icon on a navy blue background. Click or tap the icon to open Kodi on your computer, smartphone or tablet.



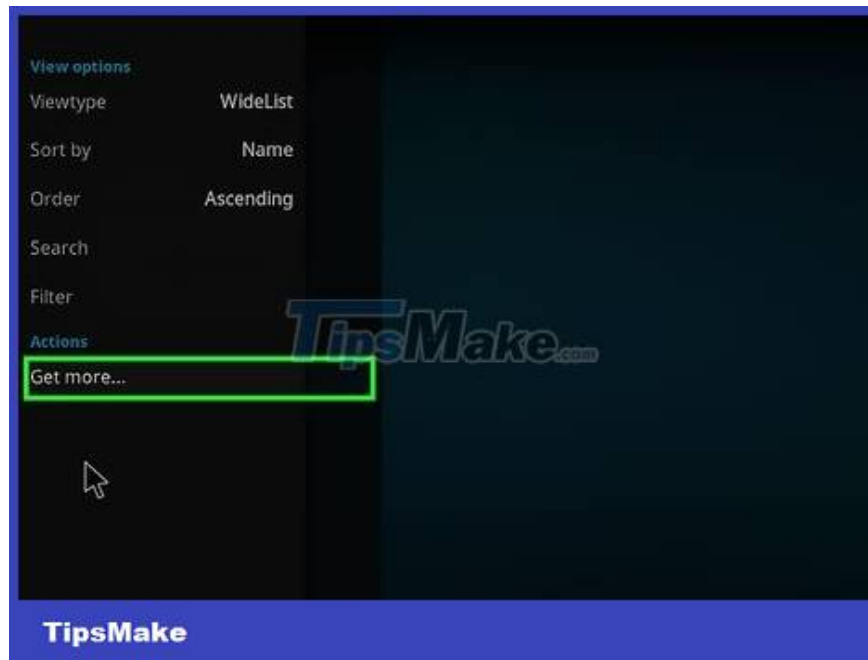
**Click or tap Videos .** It's next to the icon that looks like a film reel in the left menu.



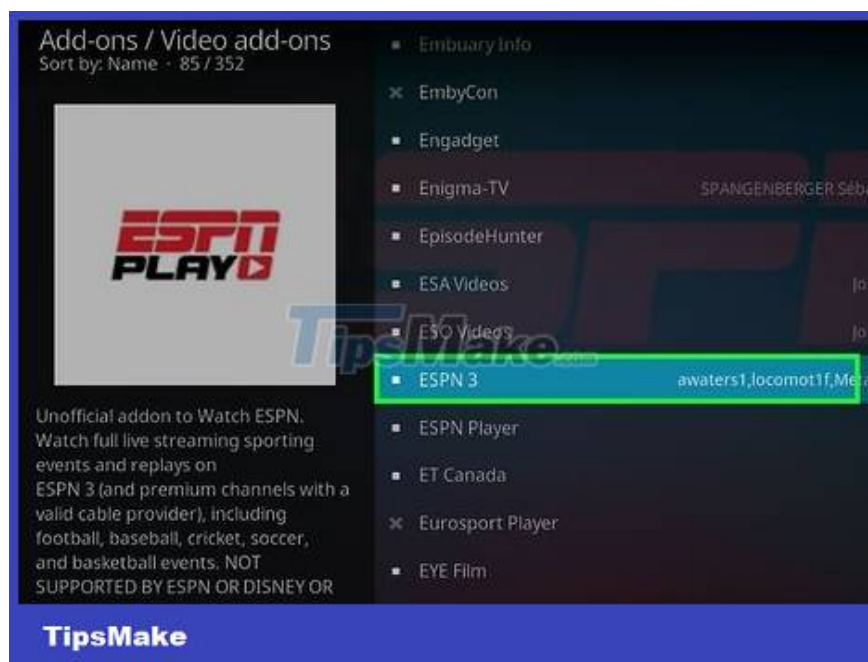
**Click or tap Video add-ons .** This black button has an icon that looks like a film reel.



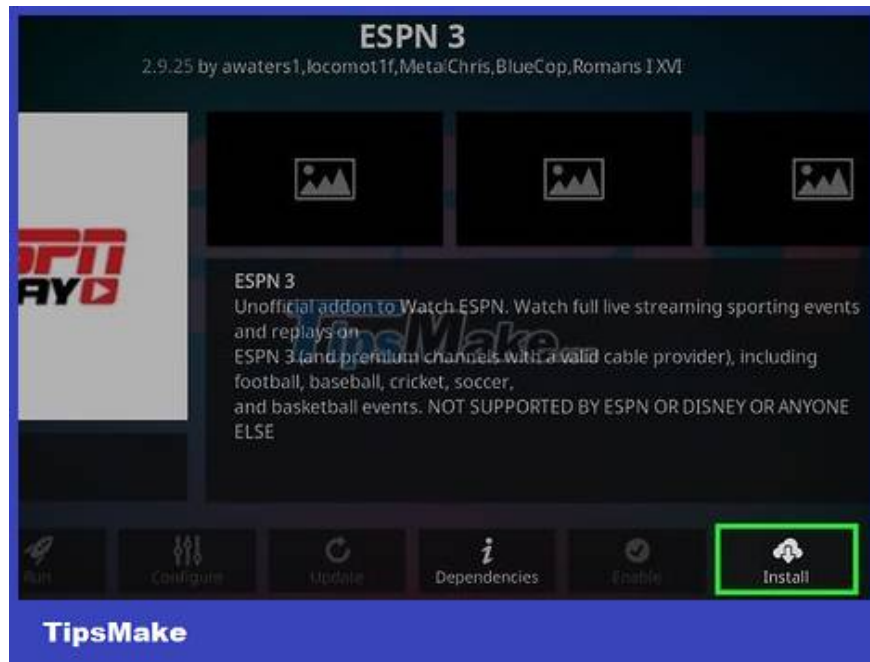
**Click or tap Options .** It's next to an icon that looks like a gear in the bottom left corner.



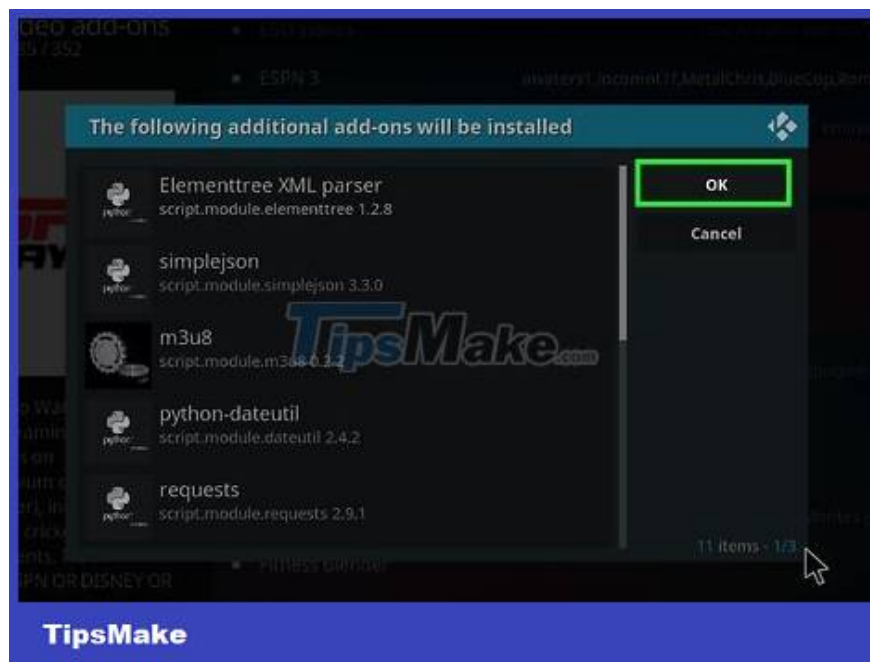
**Click or tap Get More .** It's located at the bottom of the options menu on the left.



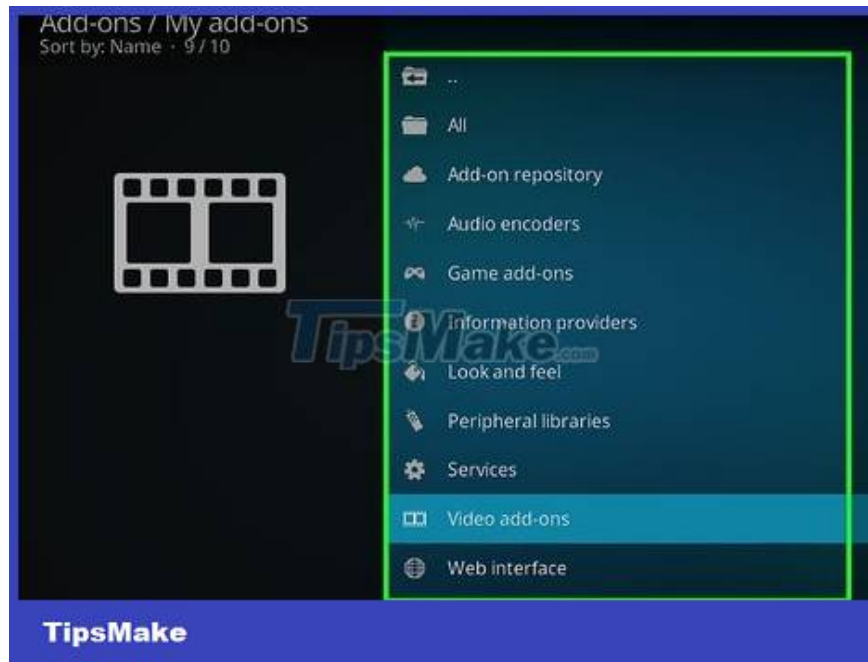
**Scroll down and click or tap ESPN3 .** All plugins are arranged alphabetically. Scroll down to Es and click or tap "ESPN3".



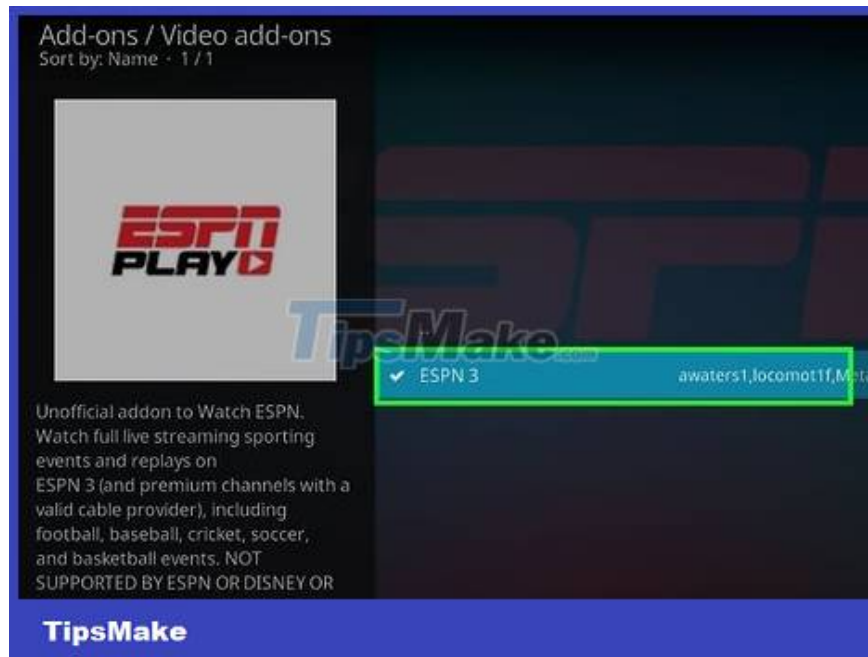
**Click or tap Install .** This navy blue button has an icon that looks like a cloud and an arrow pointing down.



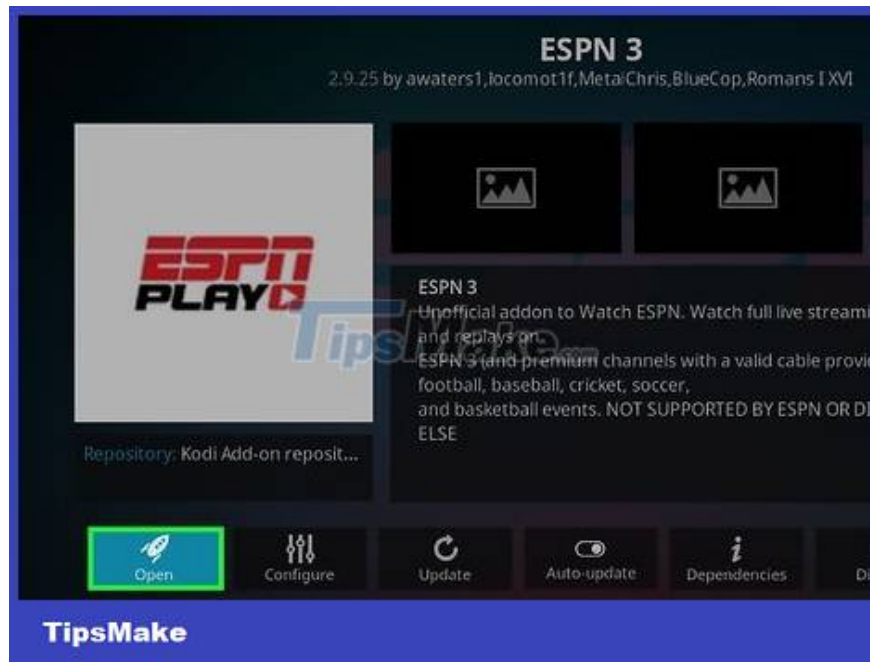
**Click or tap Ok .** This button is located in the upper right corner of the window in the middle of the screen. Usually this step will install the ESPN3 plugin and everything needed with it.



**Return to the Video Add-ons menu.** Press the "Esc" key on PC to go back, or tap the back arrow icon on Android to return to the Video Add-ons menu.



**Click or tap ESPN3 .** It is in the Video Add-ons list. You can always find ESPN3 and other video add-ons in the Video add-ons menu.



**Click or tap ESPN.** There are multiple ESPN channels on the list. Tap a channel to load it and start watching in Kodi.

Some channels may not be loaded.

You finished reading the article "**How to Watch ESPN Online**" edited by the [TipsMake](#) team. We hope this article has provided you with many useful tech tips and tricks. You can search for similar articles on tips and guides. Thank you for reading and for following us regularly.