

# How to Visit SeaWorld Orlando

With the mess of other parks in Orlando, FL, it's sometimes easy to miss enjoying SeaWorld Orlando. If you find yourself with enough time, spend a day here to get to know more about animals. If you'd like to visit SeaWorld, begin at Step 1...

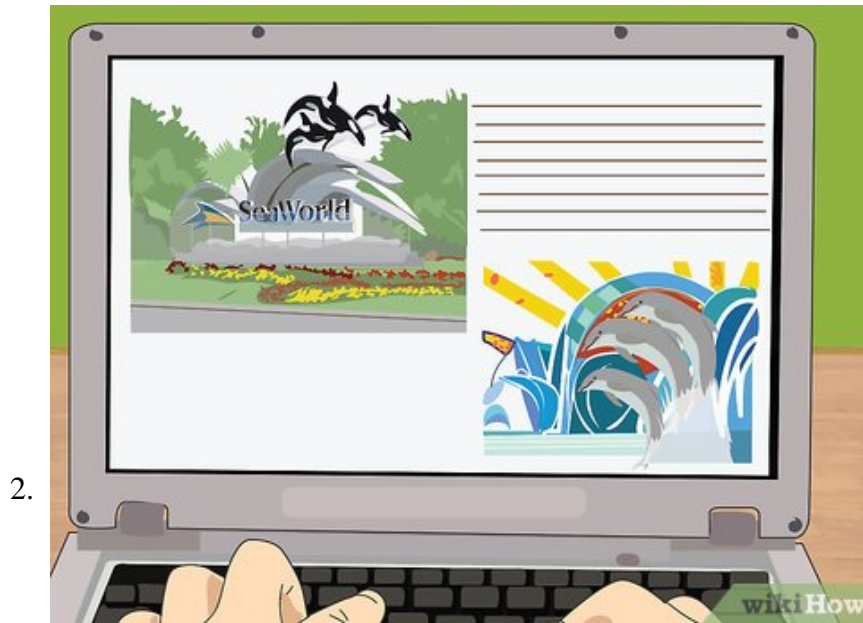
Part 1 of 3:

## Preparation

1.



**Purchase your *SeaWorld* tickets online (or over the phone) before visiting the park, particularly if you are visiting from outside the US.** This will save you time when you arrive at the park - you won't have to wait in any queues at the ticket offices!



**Preview the attractions in the park before your visit.** Try previewing each attraction or show on YouTube, or take a peek at the ride through photos from others. Learn from what others see. This can help decide which rides and attractions will take priority during your visit.



**Pack water, snacks, money and most importantly your park tickets before you leave for the park that day!**

Part 2 of 3:

## Entering the Park

1.



**Decide if you truly want to visit SeaWorld Orlando.** Discuss some of your other options that exist in Orlando. Between the Universal Orlando theme parks and the 4 major theme parks in Walt Disney World and a mess of other things nearby, this might or might not be the right fit for your family.

2.



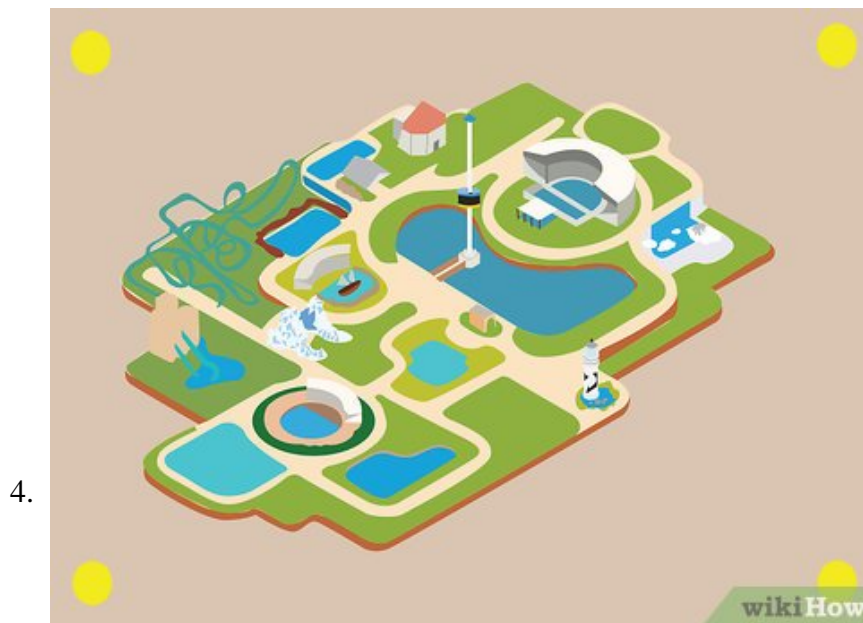
**Drive and park to the parking lot at SeaWorld.** The address to SeaWorld is 7007 Sea World Drive, Orlando, Florida 32821 .<sup>[1]</sup> The cost to park your car at the SeaWorld Orlando resort will run you about \$17 for cars and upwards from there (depending on complexity of vehicle).<sup>[2]</sup> And even if you factor in SeaWorld's owned separate theme park called Discovery Cove, SeaWorld is another experience to nourish for a day.

1. For free parking, challenge yourself to walk a tiny bit further away at the Discovery Cove lot across the Central Florida Parkway. Discovery Cove is directly across from SeaWorld, and with the great value this lot contains for the price, it's well worth the extra effort to walk a few extra yards.<sup>[3]</sup> This lot is tiny and may fill up fast. Have some better reason to be there than just the price. This lot is

only about one-fifth the size of the SeaWorld direct lot.



**Look at the entry area as you enter through the turnstiles.**The entry area is actually one of the less eye-catching things, but some people recognize it from miles away (if they were to see it twice). With its lighthouse on a pier display, it's interesting to take a few seconds to look at it. You won't find this display at other places. This area is known as *Port of Entry*.



**Look at the set up of SeaWorld Orlando.** Although SeaWorld Orlando has several lands, its lands have little to no signage behind them. Each land is formed by at least one major attraction and several smaller attractions. With the exception of the entry area these lands include *Sea of Shallows*, *Sea of Legends*, *Sea of Ice*, *Sea of Delight*, *Sea of Mystery*, *Sea of Fun* and *Sea of Power*<sup>[4]</sup>.

## Look at Park Destinations

### Sea of Shallows



**Check out the turtles in the Turtle Trek exhibit.** For the first time, you'll be able to see many different turtles up close that you wouldn't otherwise see.



**Ride the Manta roller coaster.**

3.



**Watch the SeaWorld's dolphin show called Blue Horizons.** For many, this show is informative enough and encouraging that many can take this in without getting frightened.

4.



**Get to know the sting rays in the Sting Ray Lagoon.**

5.



**View the gentle nature of dolphins in the Dolphin Cove and in the Dolphin Underwater Viewing Areas.**

6.



**Watch the alligators.**

7.



**Watch the Manatee and Sea Turtle exhibit to get to know these creatures.**

### Sea of Legends

1.



**Ride the Kraken roller coaster ride.** This massive roller coaster will "take your breath away".

2.



**Ride Journey to Atlantis' ultimate thrill ride log-flume for an out-of-this-world experience.**

3.



**Check out the Jewel of the Sea aquarium location. You can really learn about marine life here.**

**Sea of Ice**



**Recognize that reconstruction is taking place in this area of this park, so it may take a little while to establish a new area (hence, "construction free" area) here.**



**Watch the theatre show for the Antarctica Empire of the Penguin exhibit prior to taking in the ride. You can see this rather gentle animals, and at feeding time, can watch them get fed.**

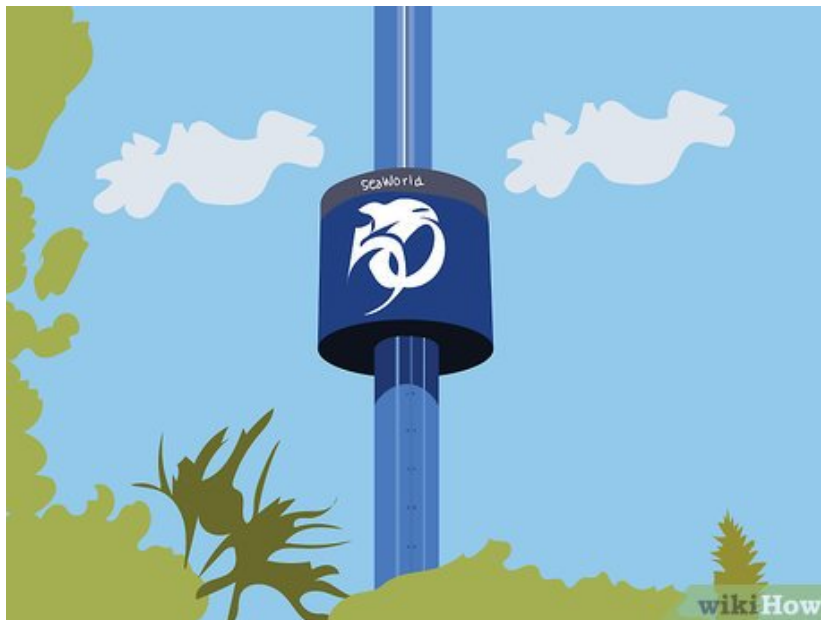
3.



**Take the ride within this reconstructed attraction by the same name (Empire of the Penguin: The Ride).** You'll have two choices as to complexity of the motion of the ride, so be prepared to explain which one you want to the ride operator upon entry into the building.

### Sea of Delight

1.



**Look at the seaport from the Skytower.** It's a little ways up, but the ride is cool and relatively easy and can definitely take a load off of any tired feet that may exist

2.



**Watch a theater show at the Seaport Theater.** This is the location of the very funny *Pets Ahoy!* theater production number.

3.



**Watch the Clyde and Seamore sea lion and otter show.** This show will have you laughing for a little while.

**Sea of Mystery**

1.



**Walk through the Shark Encounter exhibit.** With the Shark Encounter exhibit located in this area, it's actually a bit interesting to look at for adults, but be careful with children as some children will seem scared to enter. Only until they can realize that there's a cage that separates them from the sharks, will they feel they can enter safely without getting bitten or hurt.

2.



**Skip the show at the Nautilus Theater.** It is by far confusing for most visitors to watch a show as weird as the one shown in this area.

3.



**Walk through the exhibit and learn about the habitats of birds and many wildlife animals at the "Animal Connections at SEA Garden".**

4.



**Ride the paddle boats in this area if you have experience with riding paddle boats elsewhere.** Skip them if you feel the sun beating down on you is too powerful or you have no experience with other paddle boats. Plus, there is little to no extra protection from drowning (should a drowning occur here) due to no supervision onsite.

**Sea of Fun/Shamu's Happy Harbor**

1.



**Don't worry too much about *Sea of Fun*.** Sea of Fun is actually the water-fun and kid-friendly part of the park (not geared towards any animals). It features several water-fun (splash) areas.<sup>[5]</sup>

### Sea of Power

1.



**Catch a show at the Bayside Stadium, if there is a show about to begin or close to the beginning of being in progress.**

2.



**Watch Shamu (the icon of SeaWorld) at the Shamu Show (in One Ocean) at Shamu Stadium here.** Get to know a lot more about his habit and environment and a little more information about how powerful his fins really are.

1. Be careful to know exactly what times the Shamu show is showing on that particular day. It normally only has a few times it shows.
  1. Be careful of the Splash Zone at the Shamu zone. They take safety extra-seriously here. So this article doesn't spoil the fun, you'll see why this article and the theatre cautions you to sit back in the upper deck if you don't want to get super soaked. If it looks like fun after one round, go ahead and sit through another show in the bottom row of seats.

3.



**See the polar bears up close in the Wild Arctic exhibit.** This is one area that is not to be missed.

You finished reading the article "**How to Visit SeaWorld Orlando**" edited by the [TipsMake](#) team. We hope this article has provided you with many useful tech tips and tricks. You can search for similar articles on tips and

guides. Thank you for reading and for following us regularly.

---