

How to view the WIFI password on a connected Windows 11/10/8/7 computer.

Each Windows operating system has a different interface and method for viewing connected Wi-Fi passwords on a computer, and not all users know how. In this article, Taimienphi will guide you on how to view connected Wi-Fi passwords on Windows 11/10/8/7 computers and laptops.

Windows 11, 10, 8.1, 7, XP , and **Mac OS X** all support **viewing** previously connected WiFi passwords. This feature helps you avoid having to change your WiFi password by resetting the modem, as well as having to ask for the password from others.



How to view the connected WiFi password on a laptop.

The method for viewing Wi-Fi passwords on Windows 11, 10, 8.1, 7, etc., is different. Windows 11 and Win 10 have been significantly improved with numerous new features, while also removing some unnecessary functions. Therefore, you need to be very careful when following Taimienphi's instructions to **view the password of** your connected Wi-Fi network on your laptop.

Table of Contents:

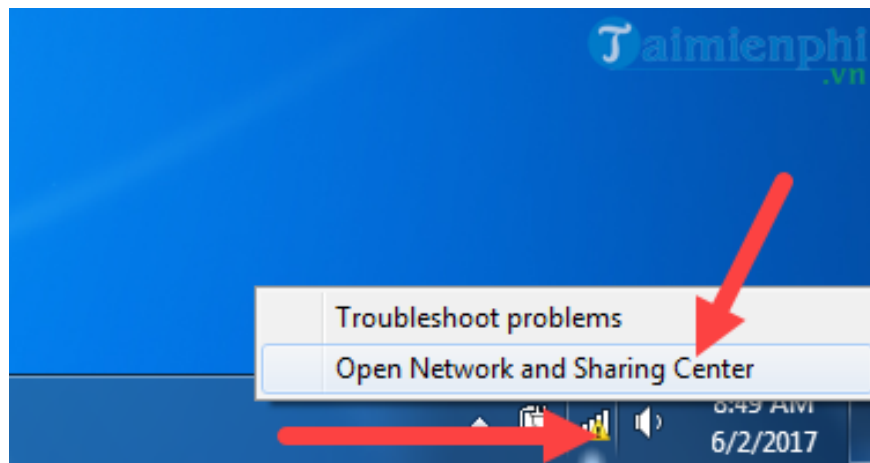
I. How to view connected WiFi passwords on your computer

1. View WiFi password on Windows 7/8
 2. View WiFi password on Windows 11/10 Method 1: View saved WiFi password in Settings . Method 2: View WiFi password via Command Prompt . Method 3: View WiFi password via the RUN dialog box . Method 4: View WiFi password using PowerShell . Method 5: View saved WiFi password via an application .
 3. View WiFi password on Mac (macOS) .
 4. View WiFi password on Windows XP .
- #### II. How to delete connected WiFi passwords on your

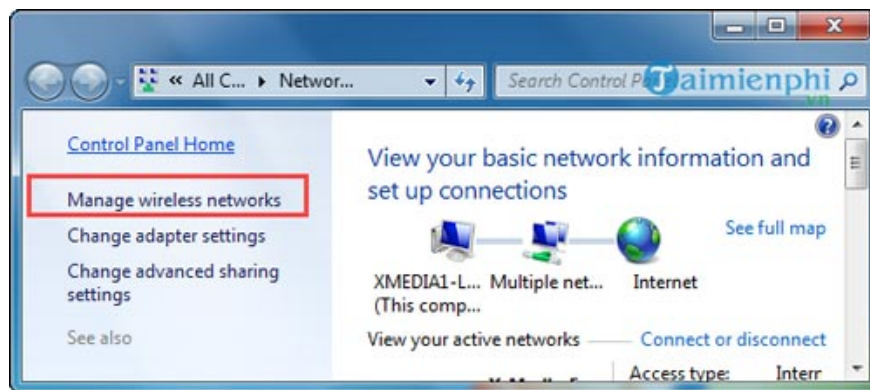
1. Instructions on how to view the connected WiFi password on your computer

1. View WiFi password on Windows 7/8

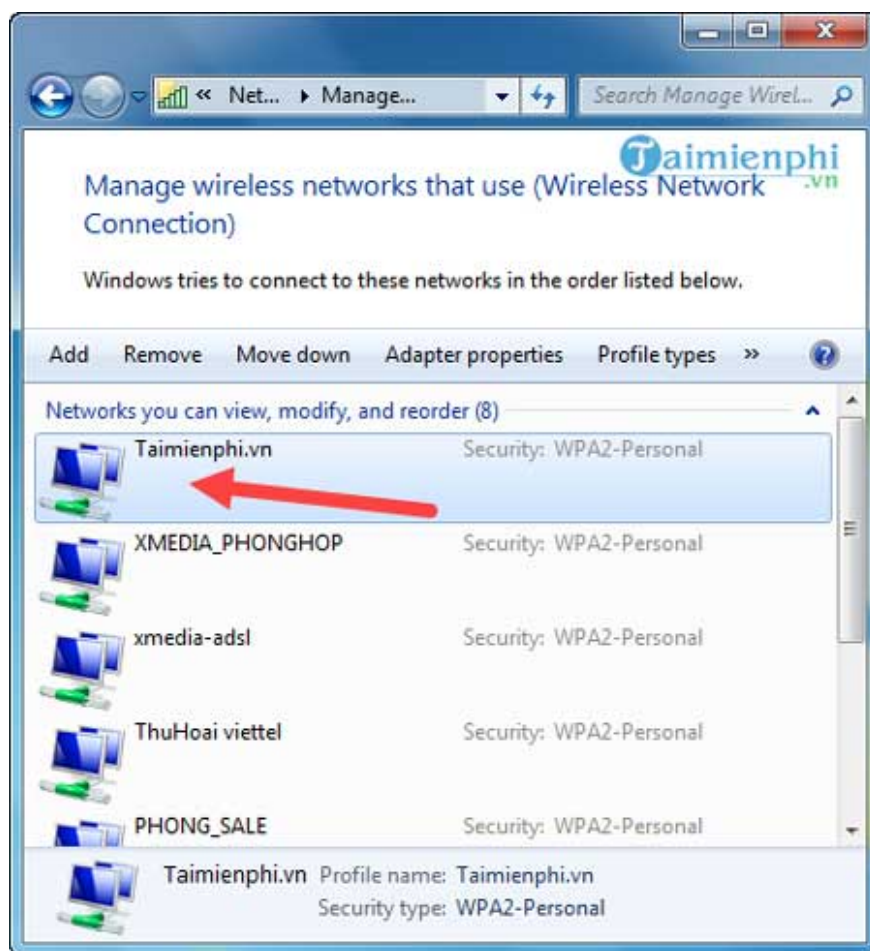
Step 1: To view your WiFi password on Windows 7, first look at the taskbar and click on **the WiFi/Network icon** , then select **Open Network and Sharing Center** .



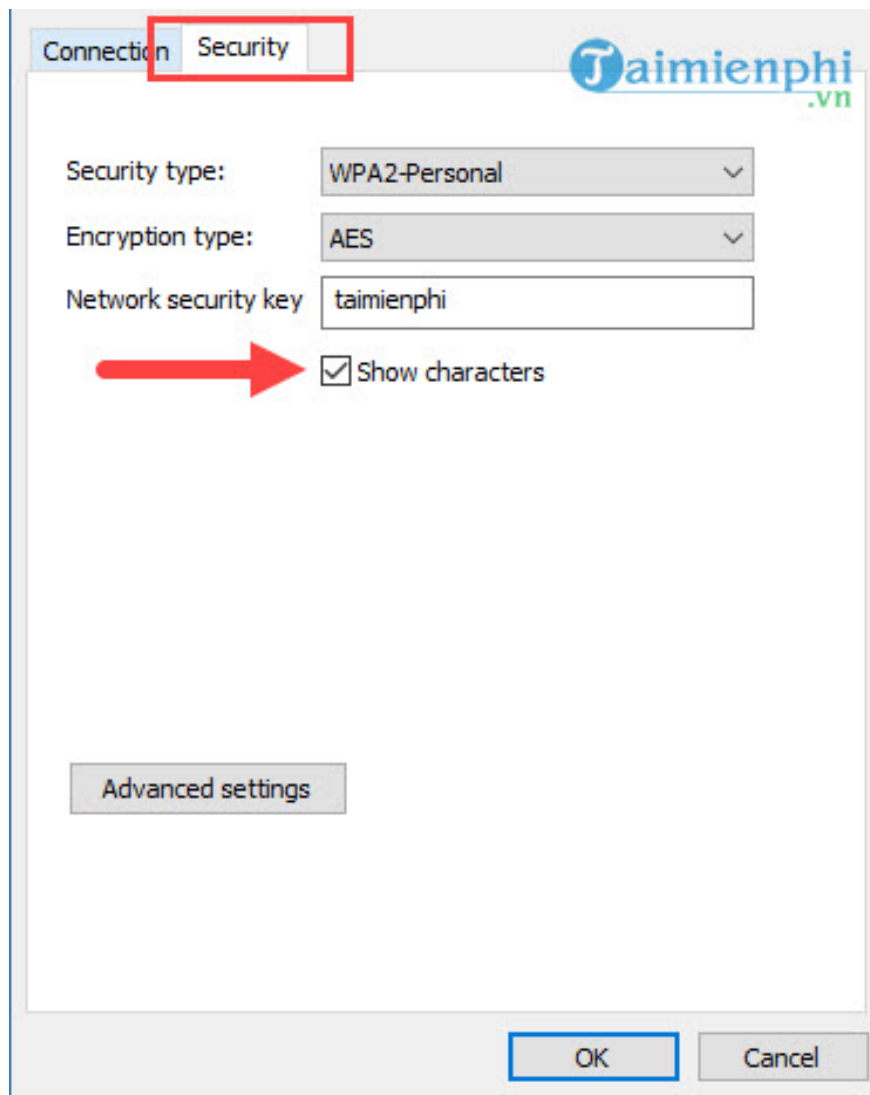
Step 2: In the Network and Sharing Center interface , select **Manage Wireless Networks** .



Step 3: Here, a list of the WiFi networks you have connected to will appear. Select the **WiFi network you want to view the password for** . (For example: view the password for TipsMake WiFi)



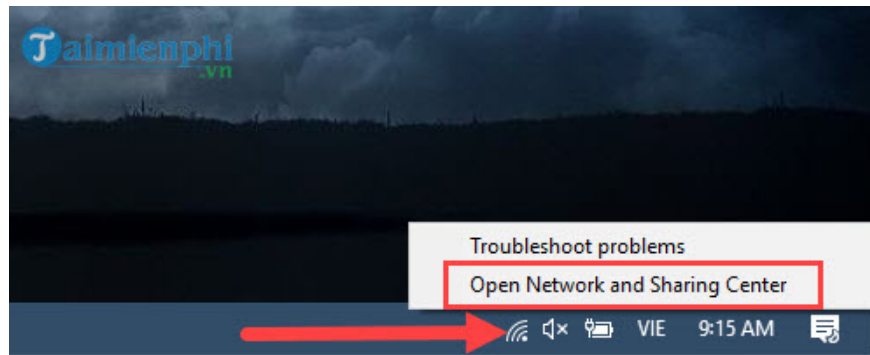
Next, select the **Security** tab , check the **Show Characters** box , and view the WiFi password from TipsMake.



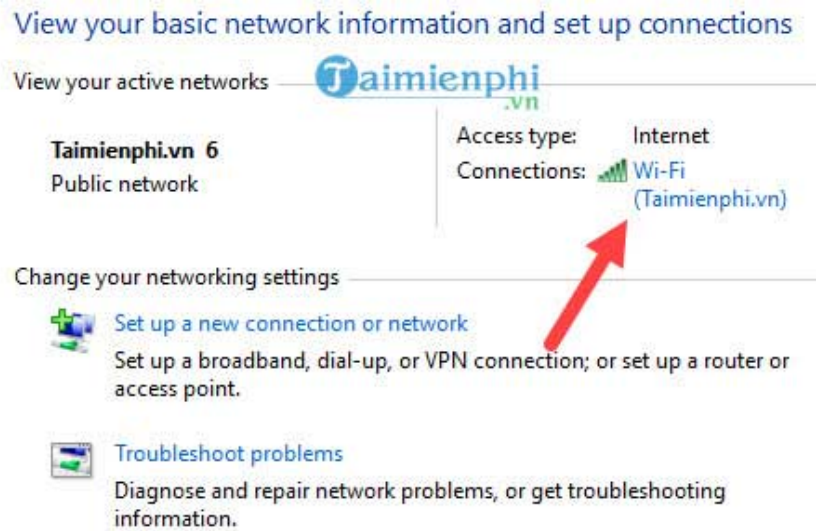
2. View WiFi password on Windows 11/10

We have a detailed guide on how to view your Wi-Fi password on Windows 11; please click on the article below.

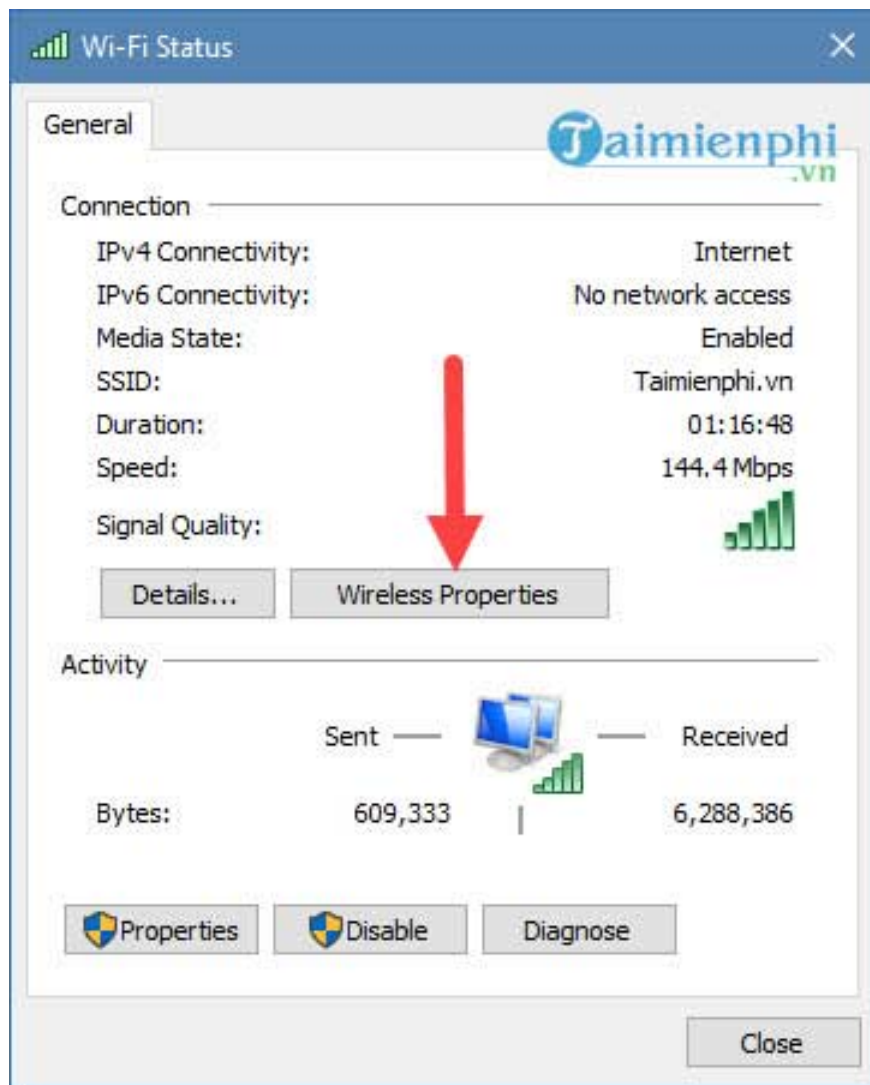
Step 1: In fact, the Windows 10 operating system only allows users **to view the currently active or saved WiFi password**. To view the WiFi password, **right-click on the WiFi icon** (similar to Windows 7) and select **Open Network and Sharing Center (Open Network & Internet Sharing)**.



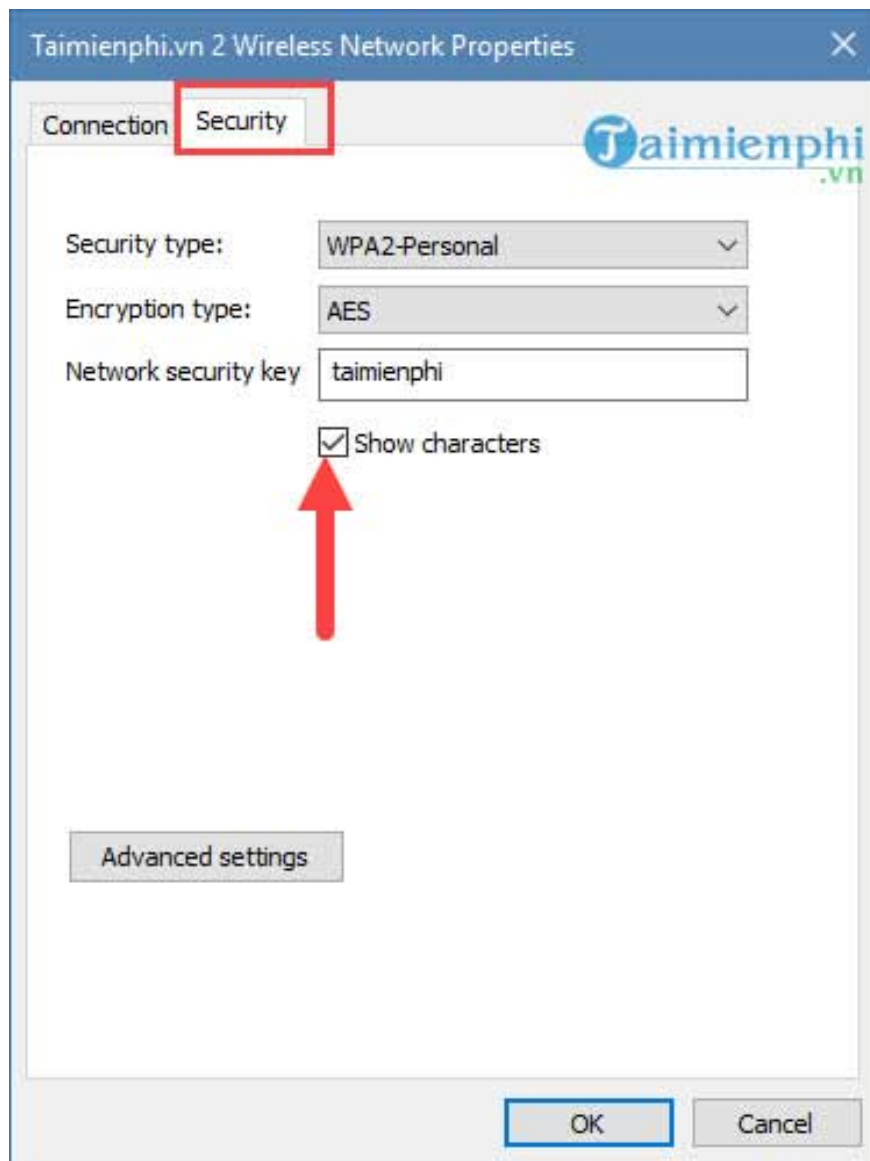
Step 2: In the **Open Network and Sharing Center** interface , select **the WiFi network you are currently connected to in the Connections tab** , as in this example, the WiFi network is named **TipsMake**.



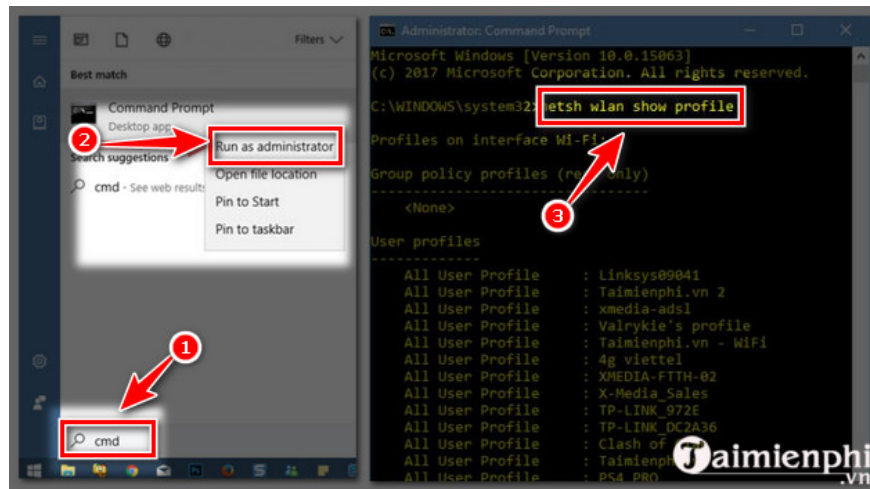
Step 3: Next, click on **Wireless Properties** in **WiFi Status** .



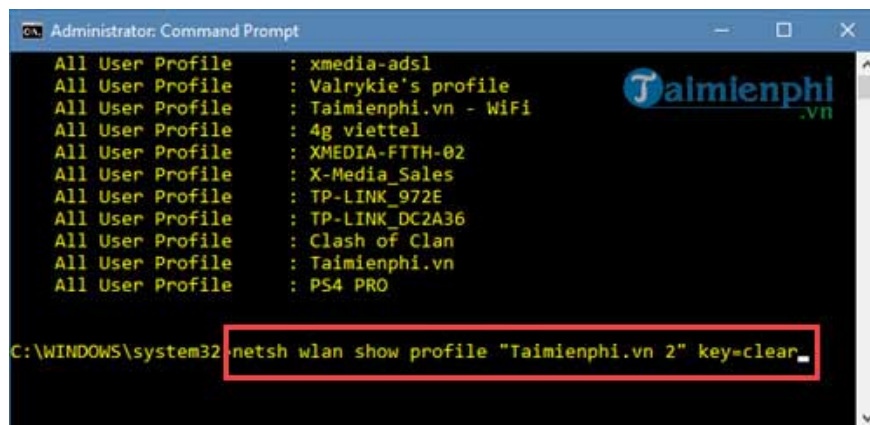
Step 4: Switch to the **Security tab** and click on **Show characters** to view the password of the connected WiFi network.



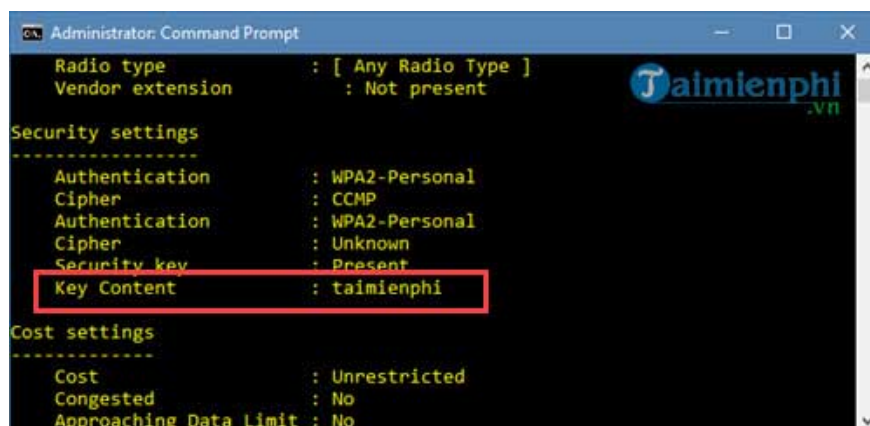
Additionally, on Windows 10, there's another way to view WiFi passwords: using Command Prompt. This method is simple but rarely used; you can refer to it for more information. First, open **the Start Menu**, type "**cmd**," then select **Command Prompt in Run as Administrator** mode. Enter the command ``netsh wlan show profile`` to list all WiFi networks that have ever connected to your laptop.



Next, type the command " **netsh wlan show profile "WiFi Name" key=clear** " to view the WiFi password. For example, if we want to see the WiFi password for TipsMake 2, we would type: **netsh wlan show profile "Taimienphi.vn 2" key=clear**

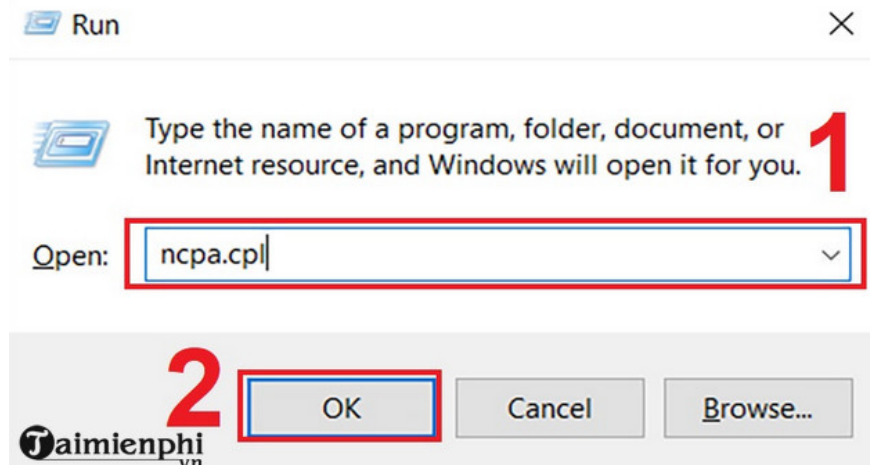


Immediately a series of parameters will appear; you just need to pay attention to the **Security settings** section, specifically the **Key Content** line . Here you will find your WiFi password. The password for Taimienphi.vn 2 is taimienphi.

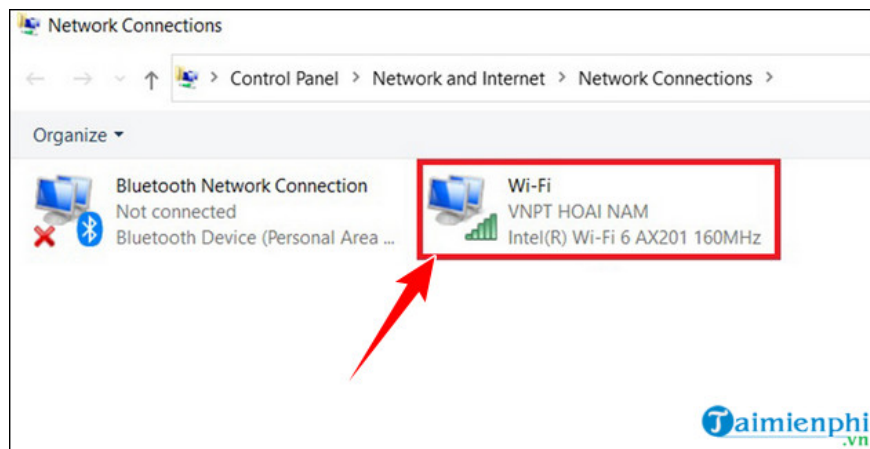


Step 1: To open the RUN dialog box, you can use the **Windows key + R** => Enter the command **ncpa.cpl** in

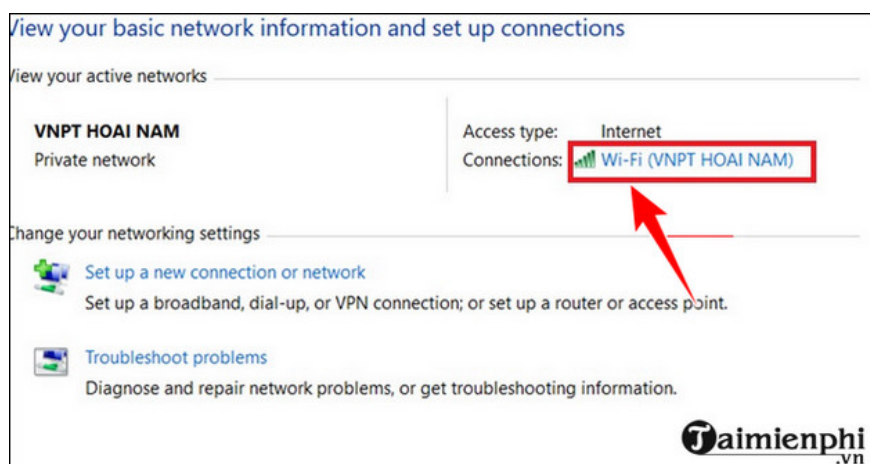
the search box, then press **OK** .



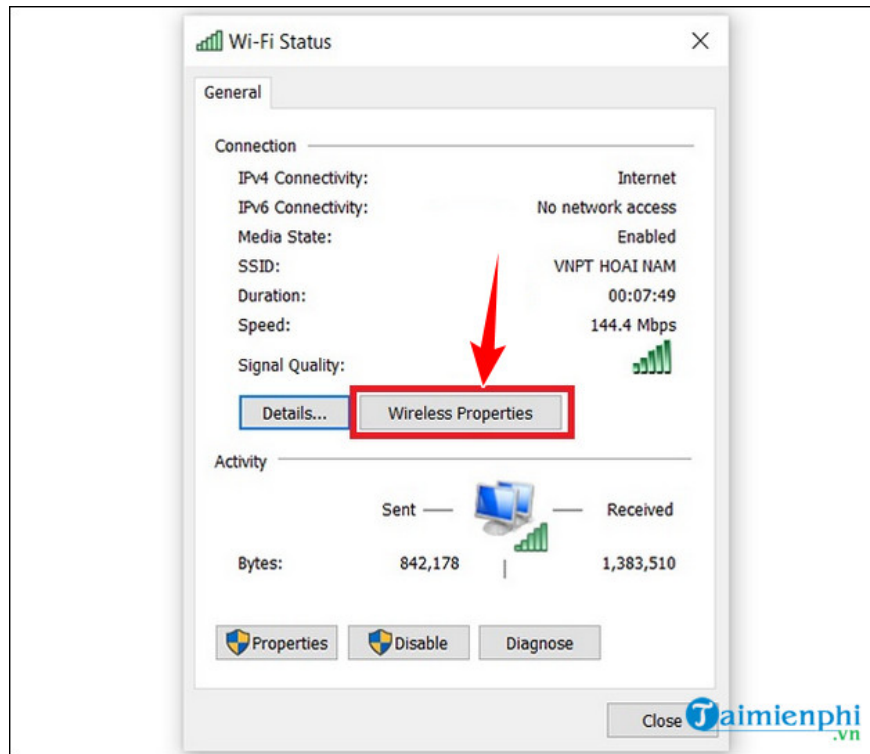
Step 2: Double-click on the **Wifi** option as shown in the image.



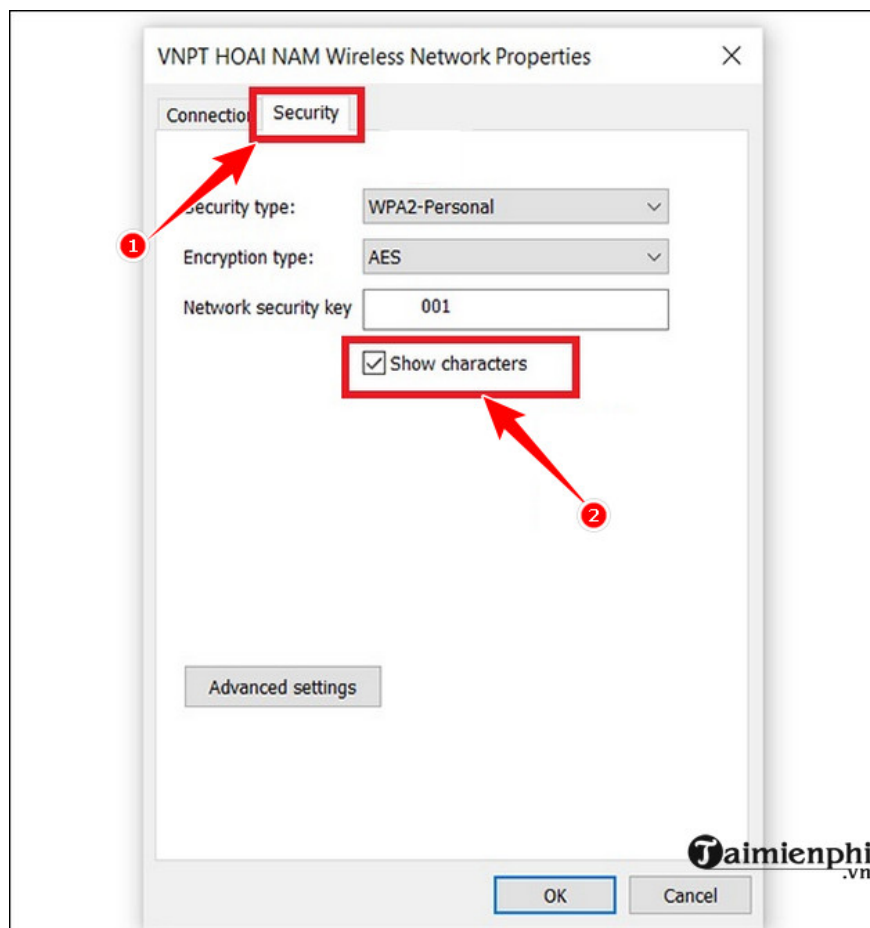
Step 3: Select the Wi-Fi network whose password you want to view.



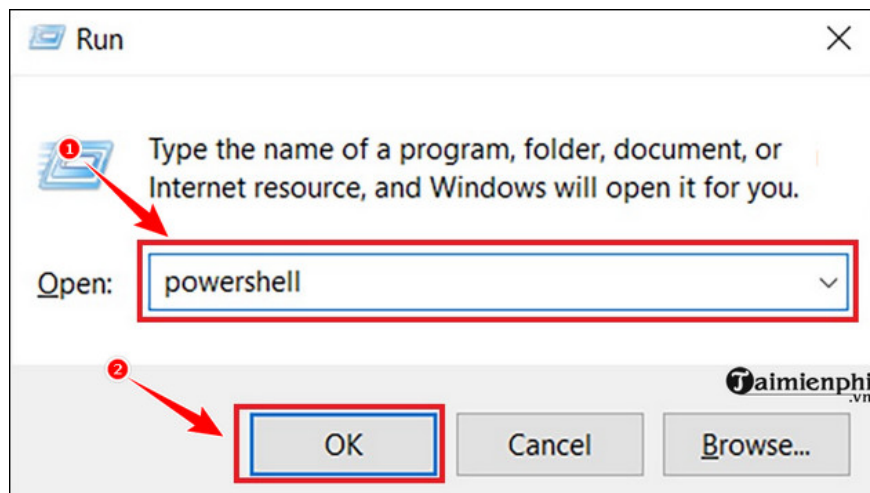
Step 4: Select **Wireless Properties** in the Wifi Status table.



Step 5: Go to **Security** => Select **Show characters** . The Wi-Fi password will be displayed.

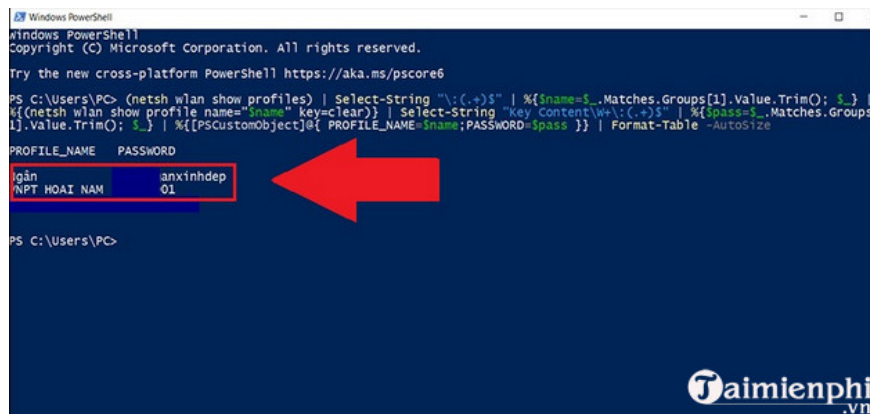


Step 1: Open the RUN dialog box using the Windows + R shortcut => Type **powershell** => press **OK** .



Step 2: Enter the following syntax into PowerShell and press Enter.

(netsh wlan show profiles) | Select-String ':(.+)\$' | %{\$name=\$_.Matches.Groups[1].Value.Trim(); \$_}



You can view saved passwords using NirSoft's free WirelessKeyView app . This is a simple tool to help you view passwords.

3. View passwords on macOS

To view your WiFi password on a Mac, press **Command + Space** => Type "**Keychain Access**" => Press **Enter** to access it => **Type the WiFi name** into the search bar => Right-click on the WiFi name => Select "**Copy Password to Clipboard**" => Enter your Mac's password => Select "**Allow**" => Paste the password anywhere to display the WiFi password.

4. View Wifi password on Windows XP

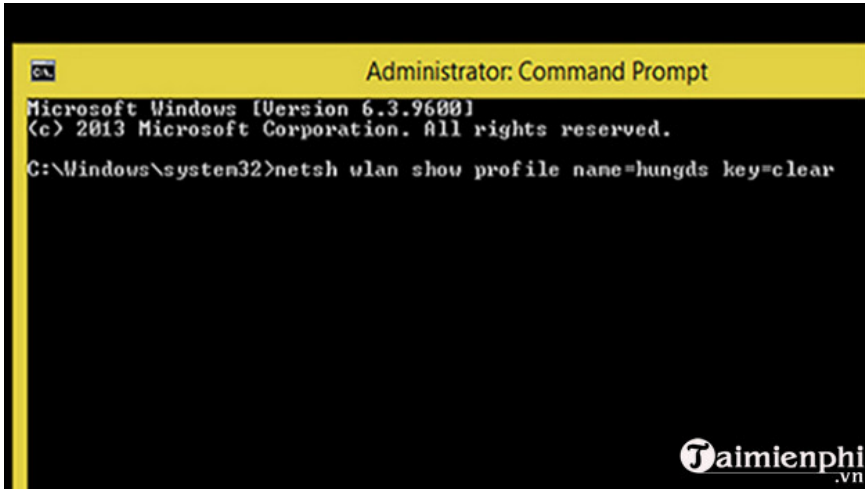
With Windows XP, you can use **Command Prompt** to view your Wi-Fi password.

Step 1: Go to the **Start Menu** => Type **Command Prompt** .

Step 2: Type " **netsh wlan show profile name=Wi-Fi name key=clear** " .

- For example, if the Wi-Fi name you want to see the password for is " **Taimienphi** ", the command would be: "**netsh wlan show profile name=Taimienphi key=clear** " .

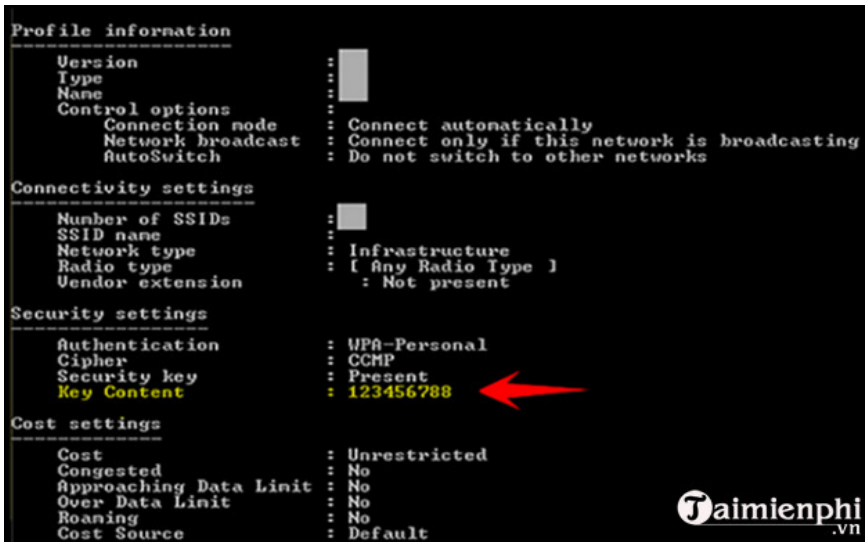
- Or you can apply it as shown in the image below .



```
Administrator: Command Prompt
Microsoft Windows [Version 6.3.9600]
(c) 2013 Microsoft Corporation. All rights reserved.
C:\Windows\system32>netsh wlan show profile name=hungds key=clear
```

Taimienphi.vn

- Then press **Enter** . The " **Key Content** " line contains the Wi-Fi password you are looking for.



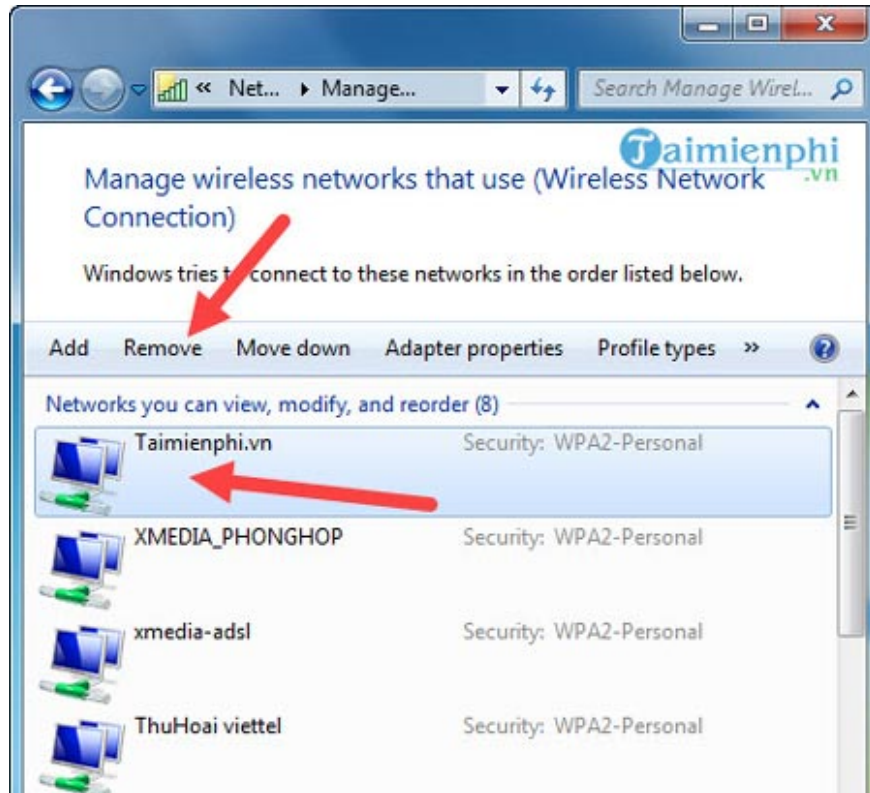
```
Profile information
-----
Version
Type
Name
Control options
  Connection mode : Connect automatically
  Network broadcast : Connect only if this network is broadcasting
  AutoSwitch : Do not switch to other networks
Connectivity settings
-----
Number of SSIDs
SSID name
Network type : Infrastructure
Radio type : [ Any Radio Type ]
Vendor extension : Not present
Security settings
-----
Authentication : WPA-Personal
Cipher : CCMP
Security key : Present
Key Content : 123456788
Cost settings
-----
Cost : Unrestricted
Congested : No
Approaching Data Limit : No
Over Data Limit : No
Roaming : No
Cost Source : Default
```

Taimienphi.vn

II. How to delete a connected WiFi password on a computer

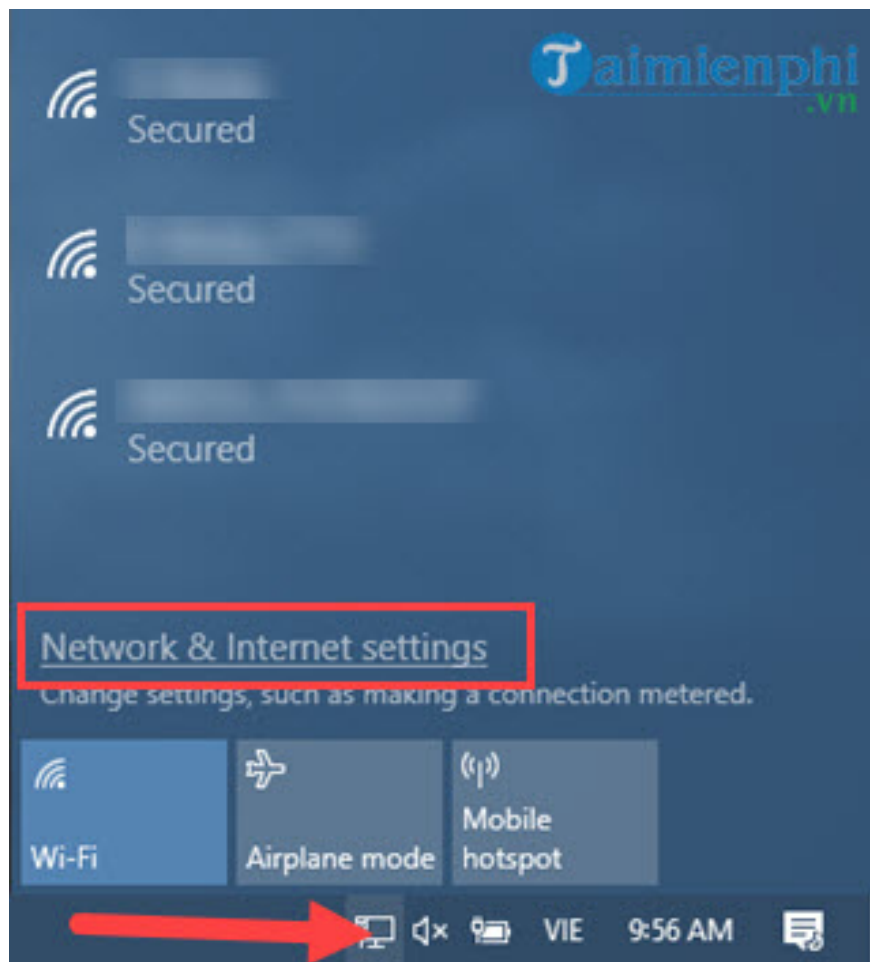
1. Remove Wifi password on Windows 7/8

Removing the WiFi password on Windows 7 is quite simple. Follow the instructions at the beginning to view the password, but stop at step 3, which is going to **Manage Wireless Networks** . To remove the WiFi, select **the WiFi** and click **Remove** . It's as if your computer was never connected to that WiFi network.

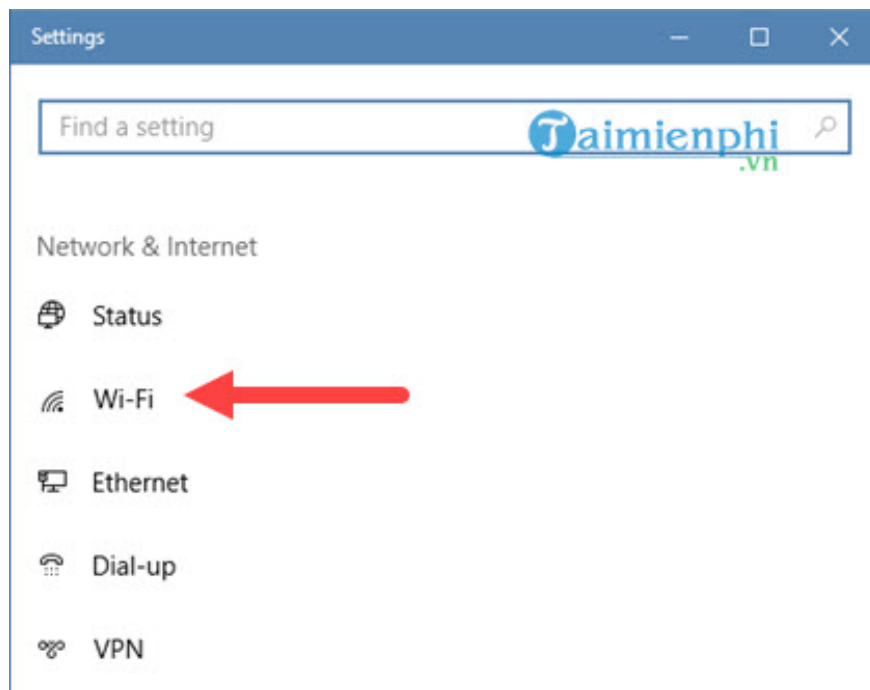


2. Remove WiFi password in Windows 10

Step 1: Click on the **WiFi/Network icon** and select **Network & Internet settings** .



Step 2: In **Settings** , select the **WiFi** option .



Step 3: Here, select "**Manage known networks** ," which manages the connected WiFi networks.



Step 4: Finally, **click on any WiFi network** you want to delete and select "**Forget**".



Taimienphi.vn has just guided you **on how to view** and delete saved WiFi passwords on your laptop. Additionally, you can learn more about managing WiFi passwords on Windows to better manage your network data. Each operating system has different management methods, but all help you use WiFi more effectively. Furthermore, if you no longer want to use a WiFi network, you can easily delete it on Windows.

You finished reading the article "**How to view the WIFI password on a connected Windows 11/10/8/7 computer.**" edited by the [TipsMake](#) team. We hope this article has provided you with many useful tech tips and tricks. You can search for similar articles on tips and guides. Thank you for reading and for following us regularly.

