

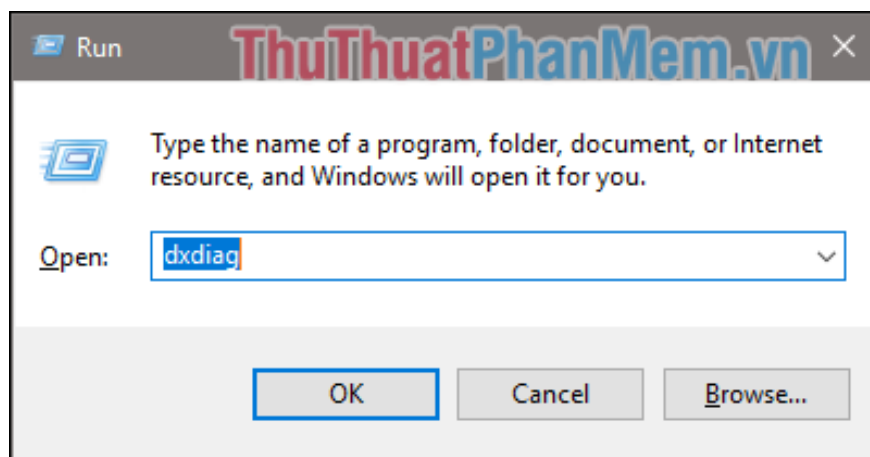
# How to view the video card, check the discrete video card, onboard

How to view the video card, check the discrete video card, onboard. On a computer, there are two types of video cards: discrete video cards (removable cards of brands like AMD, NVIDIA) and onboard cards (type of integrated cards in CPU). To know the old calculator

On a computer, there are two types of video cards: discrete video cards (removable cards of brands like AMD, NVIDIA) and onboard cards (type of integrated cards in CPU). To know whether your computer is using card on or discrete card we have a lot of ways. You can remove the cover of your PC's CPU case to view or against the laptop you can observe the advertising stamps on the body. In this article, TipsMake.com will guide you how to check discrete video card, onboard other than how to view directly on the body as above.

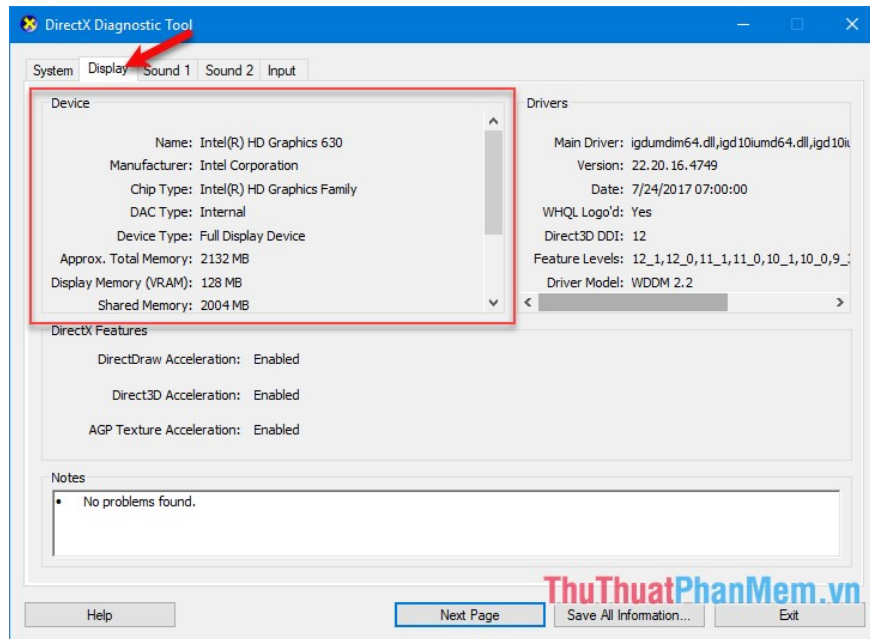
## 1. Check the video card by using the command 'dxdiag' on windows.

**Step 1:** You open the **Run** dialog box by pressing the key combination **Windows + R**, then enter the command **'dxdiag'** and then click **OK**.

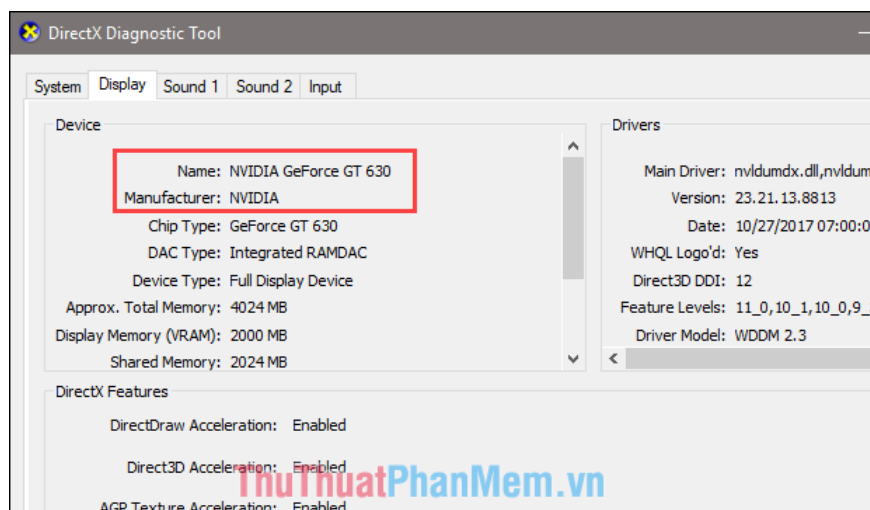


**Step 2:** A dialog box appears, switch to the **Display** tab in the **Device** box, you will see the information of the video card.

In the image below the display is **Intel (R) HD Graphic 630** ie onboard card.



If displayed as ATI, AMD or NVIDIA as shown below, the video card is discrete:



## 2. Check the video card using GPU-Z software

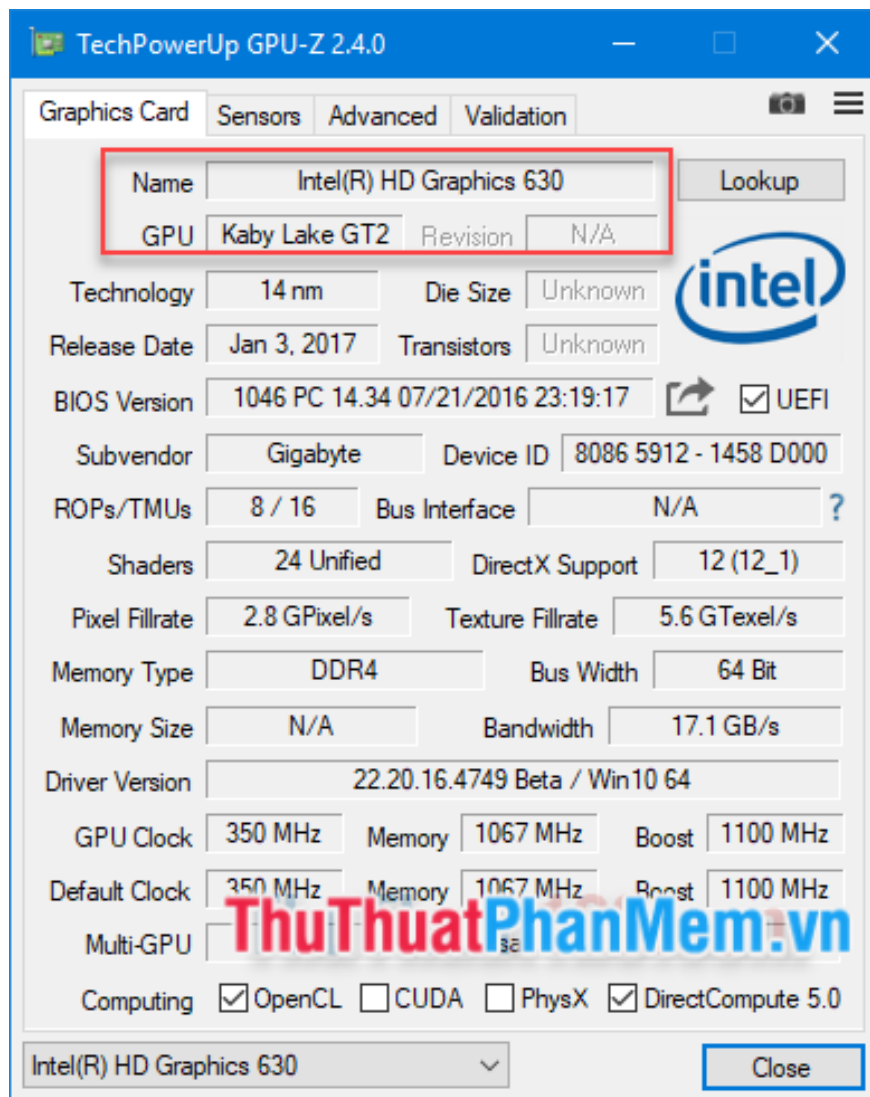
This is a specialized software to view detailed parameters of the video card with many different parameters including monitoring the operation status of the video card.

**Step 1 :** First, download the GPU-Z software here.

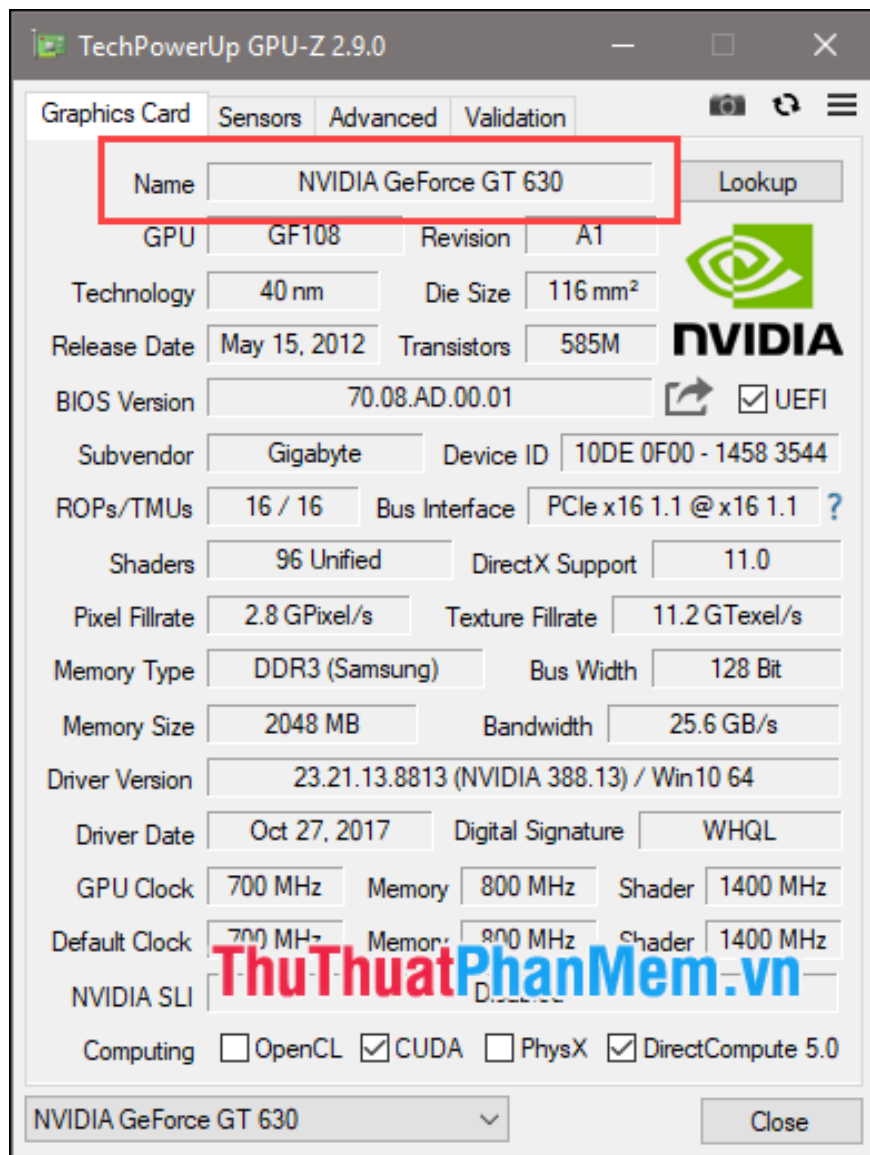
<http://www.guru3d.com/files-get/gpu-z-download-techpowerup,12.html>

**Step 2 :** You install the software and then run the software will have the following interface:

Here the display card name is **Intel (R) HD Graphic 630** ie onboard card.



If displayed as ATI, AMD or NVIDIA as shown below, the video card is discrete:



Above is a tutorial on how to check whether a computer card is a discrete or onboard card, hope you will find the article useful. Thank you for watching the article!

You finished reading the article "**How to view the video card, check the discrete video card, onboard**" edited by the [TipsMake](#) team. We hope this article has provided you with many useful tech tips and tricks. You can search for similar articles on tips and guides. Thank you for reading and for following us regularly.