

# How to view the RAM, motherboard, and CPU bus speeds on your computer or laptop using CPU-Z.

With CPU-Z, you can view a lot of information about your computer's hardware, such as the RAM bus speed, motherboard speed, CPU speed, and many other hardware details. So how do you view this information?

In a computer system, components like RAM, motherboard, and CPU each have a unique BUS speed. This speed indicates the size of the data transmission channel within the RAM, motherboard, and CPU. The higher the BUS speed, the faster these components will operate. When upgrading a computer, it's essential to know the detailed specifications of the old components to purchase suitable replacements. So, how do you check your computer's configuration and view these specifications? Taimienphi will guide you on how to check the BUS speed of your RAM, motherboard, and CPU using the CPU-Z software.



## Guide to viewing RAM, motherboard, and CPU bus speeds on your computer or laptop using CPU-Z.

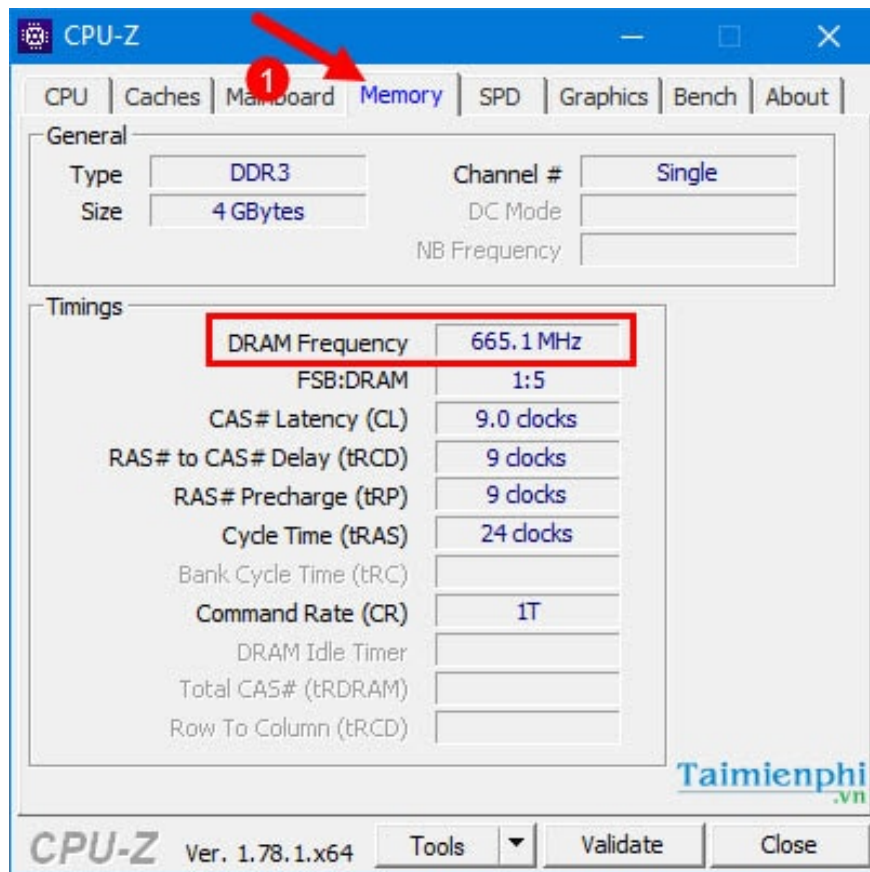
### *1. How to view RAM BUS*

*Step 1* : Download and install the **CPU-Z** software .

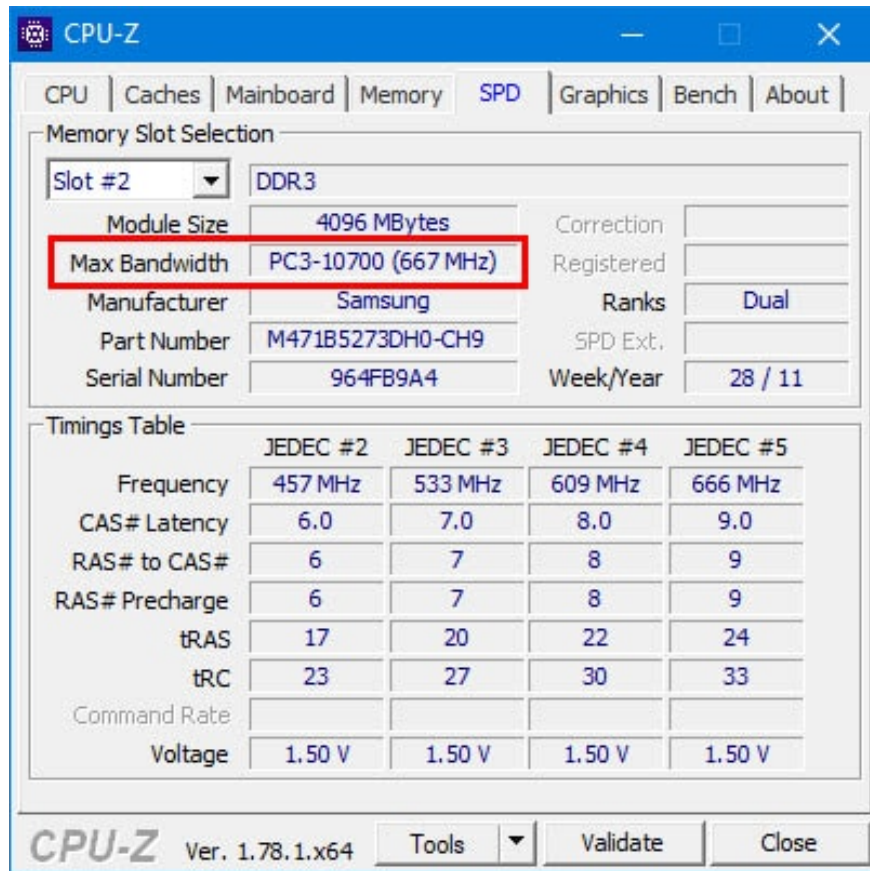
*Step 2* : Launch the **CPU-Z** software installed on your computer and select the **Memory** tab.

In the **Memory** tab , check the **DRAM Frequency** . If your RAM is **DDRAM** (DDR2, DDR3, or DDR4), your RAM BUS will be **DRAM Frequency x 2**.

For example: On my computer, the DRAM Frequency is 665. Therefore, the RAM BUS speed will be 1330.

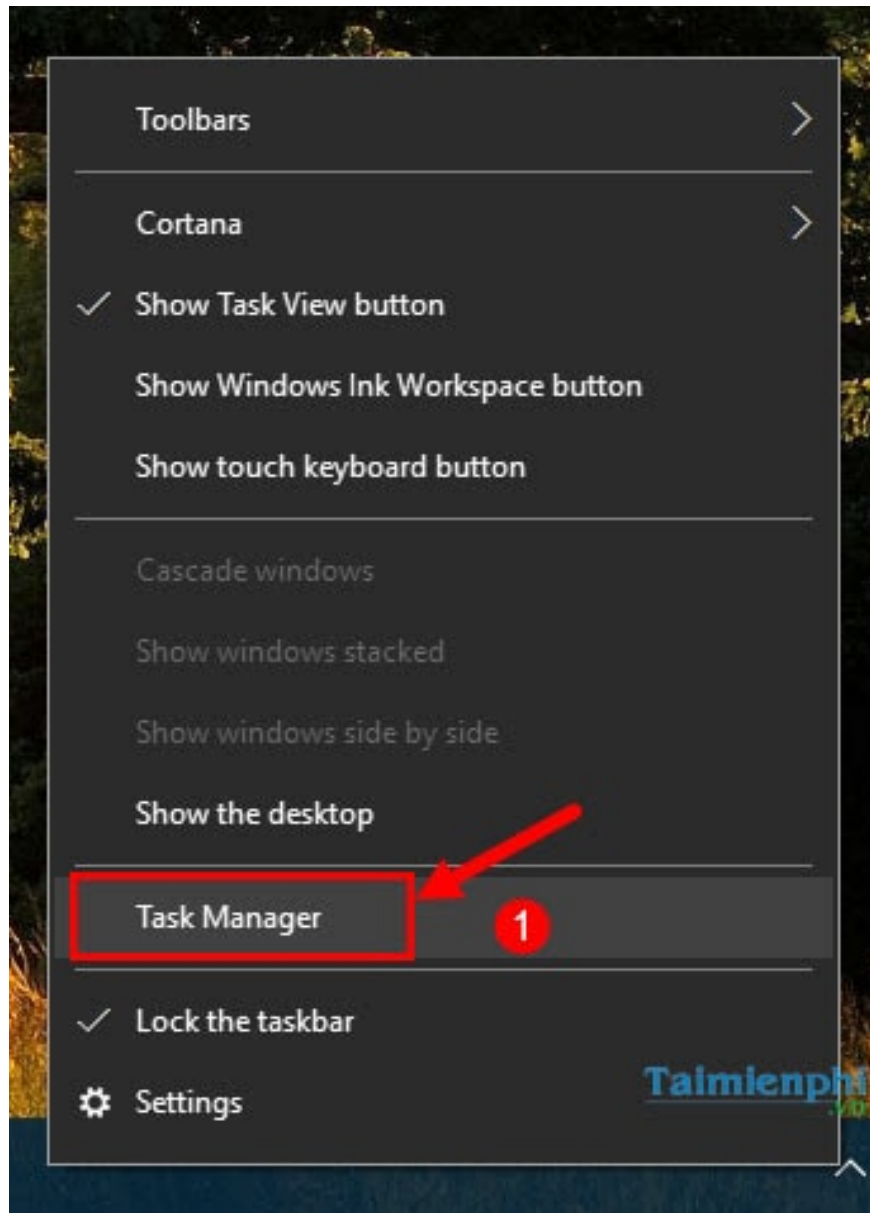


Additionally, you can also view this information in the **Max Bandwidth** section under the **SPD** tab.

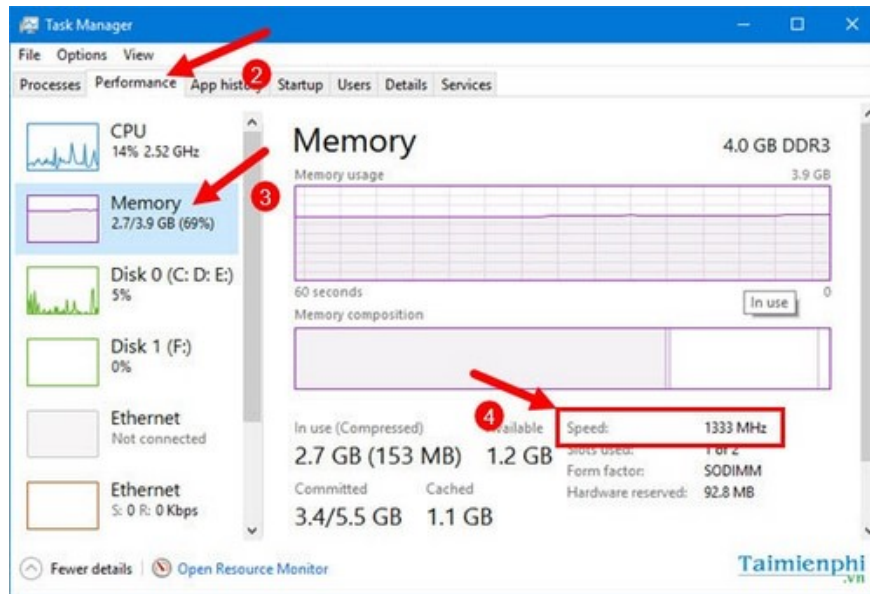


## 2. View RAM BUS speed directly in Windows 10 Task Manager.

*Step 1* : Right-click on the Taskbar in Windows 10 and select **Task Manager** .

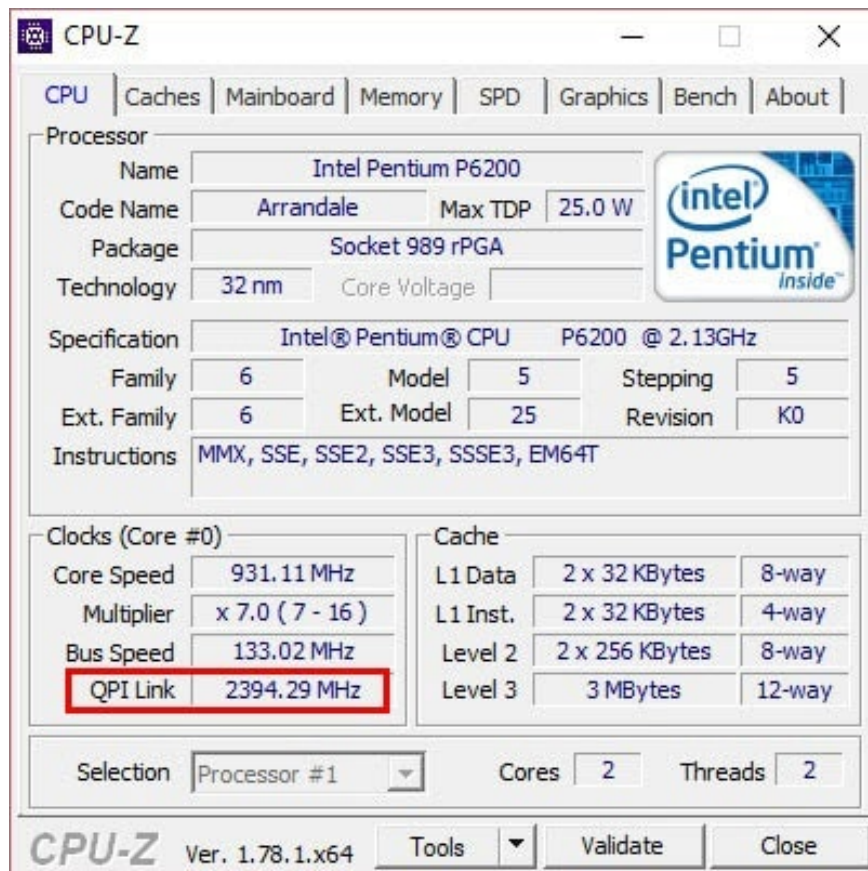


Step 2 : Select the **Performance** tab , click on **Memory** , and **the RAM BUS speed** will be displayed .



### 3. How to view the CPU bus

Launch the CPU-Z software as described above, then click the **CPU** tab.



**The CPU BUS will be the Related FSB or QPI Link specification.**

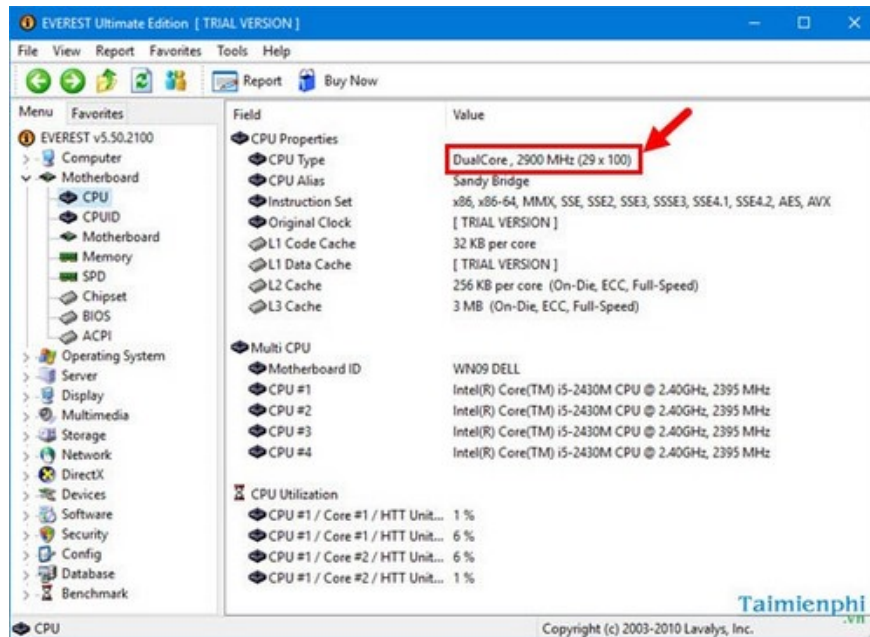
Note: This specification is only found on older chip lines due to the continued existence of the FSB. From the Intel Sandy Bridge series (Intel Core i3, i5, i7 2xxx and above), this specification no longer exists as this

technology has been abandoned; the CPU now connects directly to the memory.

For Intel Core i3, i5, i7 2xxx series chips and above, you can use **Everest Ultimate Edition** software to check their performance.

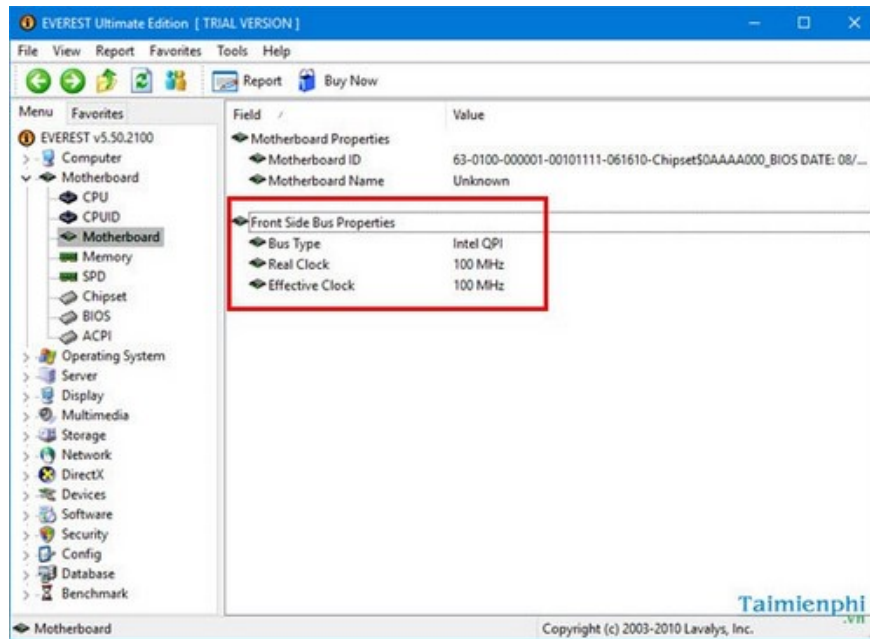
*Step 1:* Download and install **Everest Ultimate Edition**

*Step 2 :* Launch **Everest Ultimate Edition** , select **Motherboard** , then select **CPU** . The CPU BUS specifications will be found in the **CPU Type** section.



#### **4. How to view the motherboard's BUS**

**Launch Everest Ultimate Edition** software as described above, select **Motherboard** , and the motherboard's BUS specifications will appear.



Thus, with just a few simple steps, you can view the BUS speed of your RAM, motherboard, and CPU. You should also refer to how to choose a motherboard before deciding to upgrade your computer system.

You finished reading the article "**How to view the RAM, motherboard, and CPU bus speeds on your computer or laptop using CPU-Z.**" edited by the [TipsMake](#) team. We hope this article has provided you with many useful tech tips and tricks. You can search for similar articles on tips and guides. Thank you for reading and for following us regularly.