

How to view the currently connected Wi-Fi password on Windows 11

Sometimes you have connected your Windows 11 PC to a certain WiFi network for so long, that you forgot what the password was.

In case you want to review the password of that WiFi network on windows 11, how to do it? Find out below.

View connected WiFi password on Windows 11

To see the password of the WiFi network you're currently connected to, use an option in Windows 11's Settings app.

First, open the Settings app on your PC by pressing the Windows + i key combination.

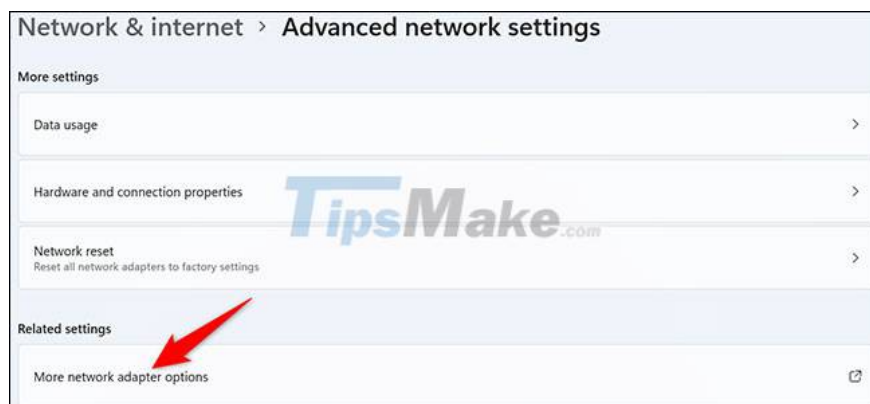
On the Settings interface that appears, look to the menu on the left and click on the 'Network & Internet' item.



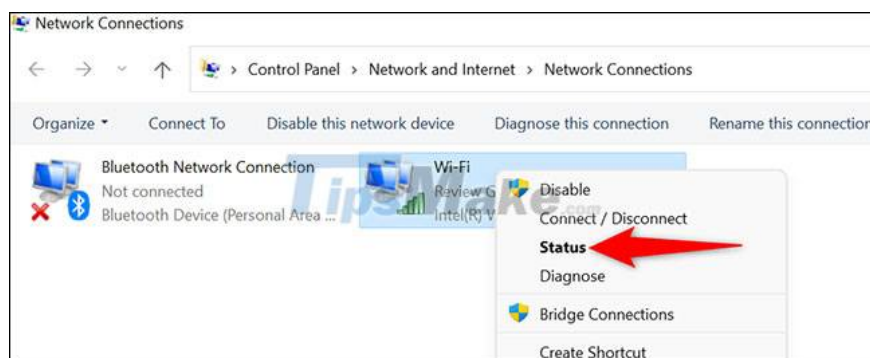
On the 'Network & Internet' settings page, click 'Advanced Network Settings'.



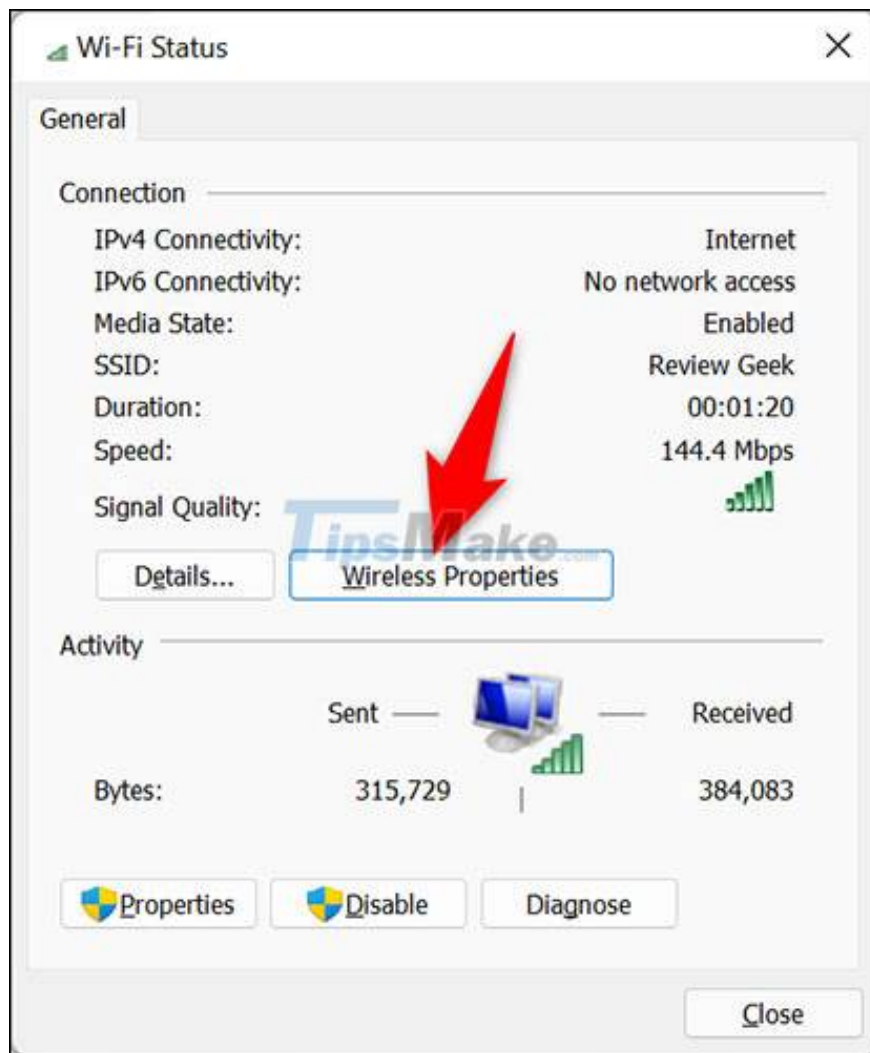
On the 'Advanced Network Settings' page that appears, under 'Related Settings', click on 'More Network Adapter Options'.



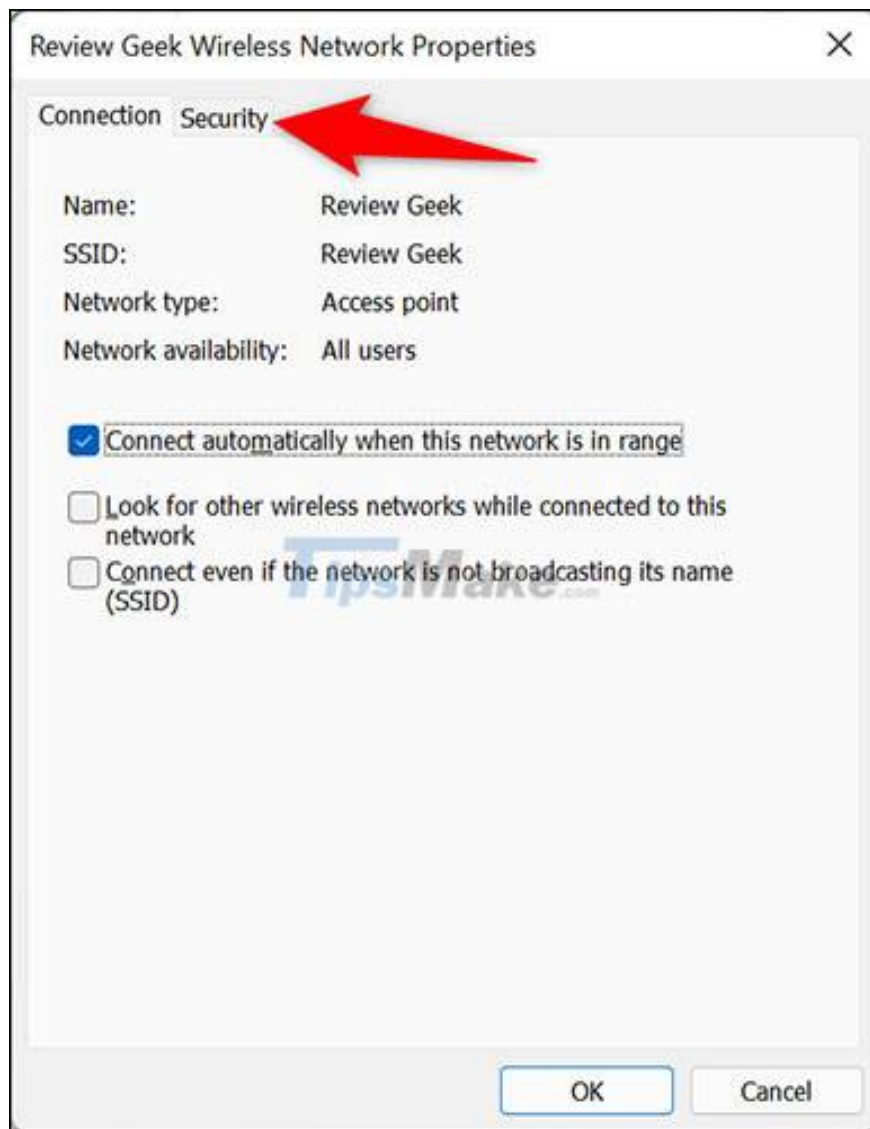
The 'Network Connections' window will open. Here, you right click on your wireless adapter that you are using and select 'Status'.



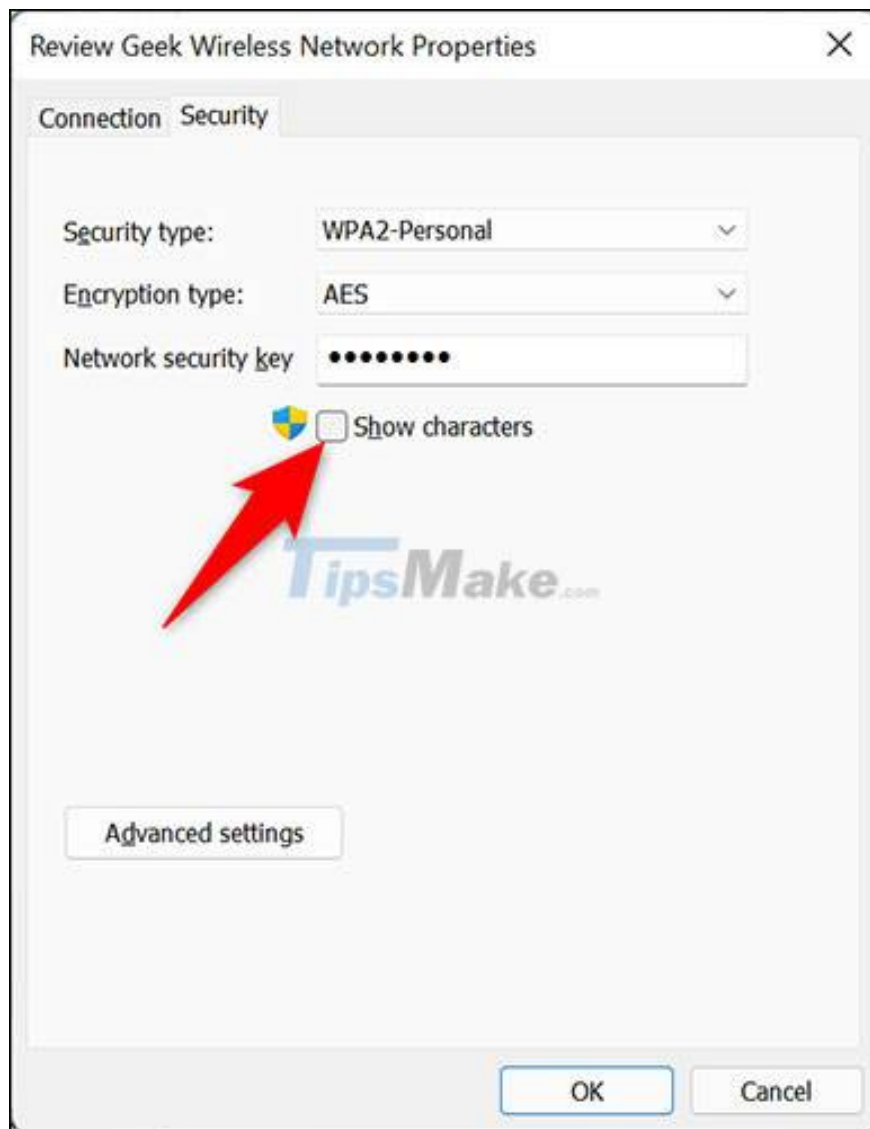
The "Status" window will open. Here, click the 'Wireless Properties' button.



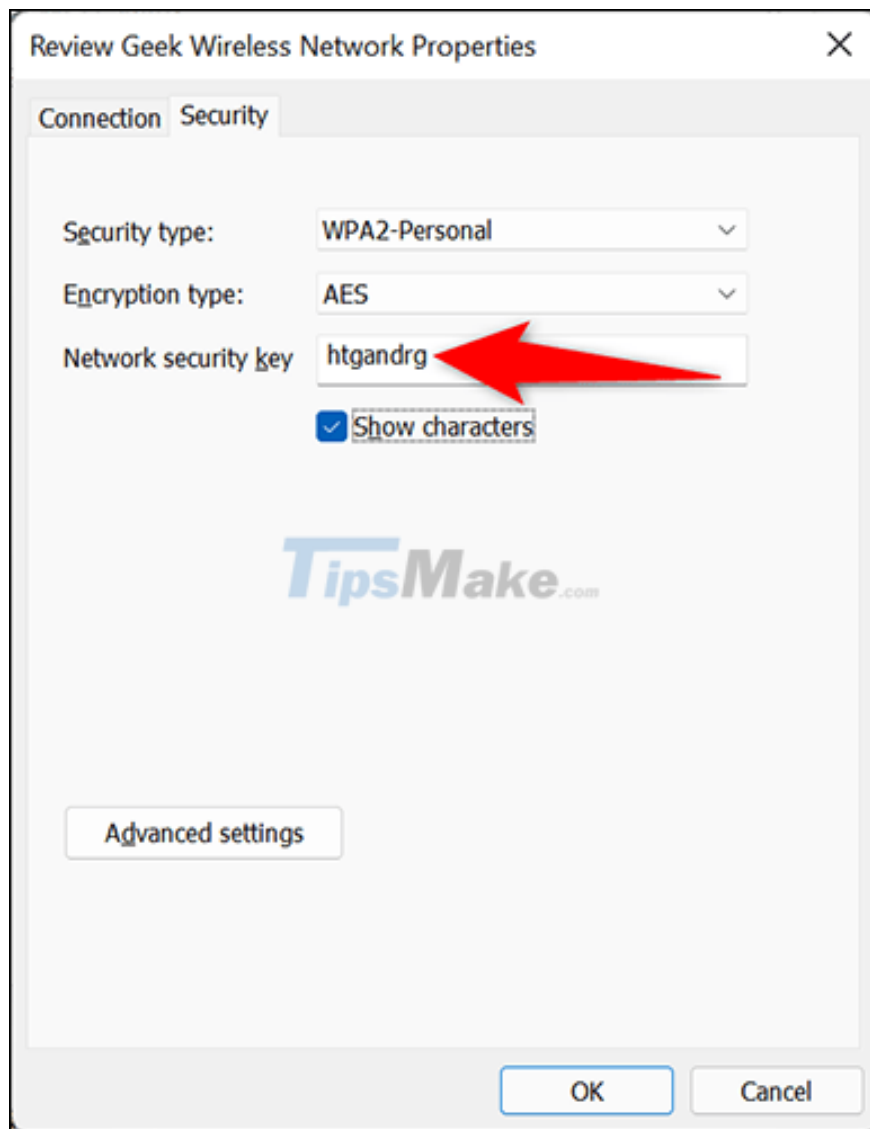
At the top of the 'Wireless Properties' window, click the 'Security' tab.



You are now on the 'Security' tab where you can see the password of the connected WiFi network. Just look below the 'Network Security Key' field and check the box next to 'Show Characters'.



Immediately, the password of your currently connected WiFi network will be displayed in full.



Hope you are succesful.

You finished reading the article "**How to view the currently connected Wi-Fi password on Windows 11**" edited by the [TipsMake](#) team. We hope this article has provided you with many useful tech tips and tricks. You can search for similar articles on tips and guides. Thank you for reading and for following us regularly.