

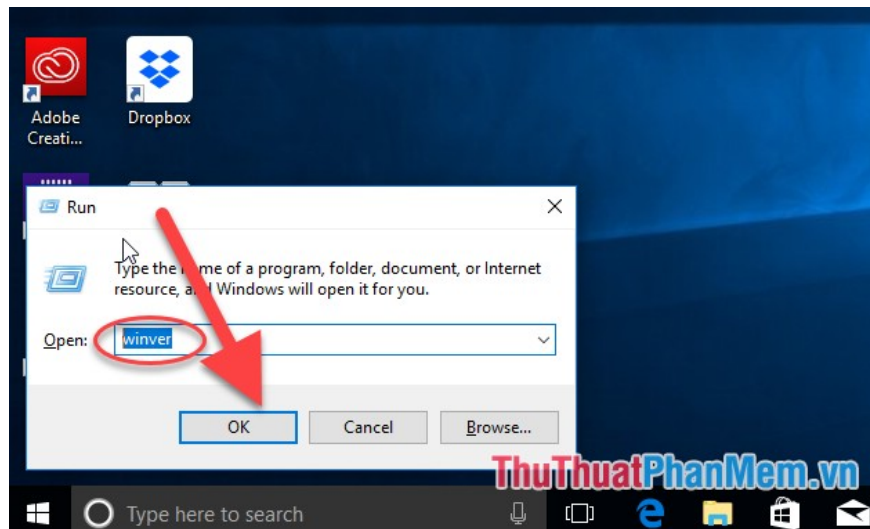
How to view and check the Version version and build number of Windows 10 are in use

The following article details how to view / check the version (Version) and the number of Windows 10 builds currently in use.

The following article details **how to view / check the version (Version) and the number of Windows 10 builds currently in use.**

Method 1: Check the version and build number of Window 10 using the command

Press **Window + R** -> enter the **Winver** command -> click **OK**:



After clicking **OK**, the **About** dialog box with information about the version or build window number you are using is displayed:

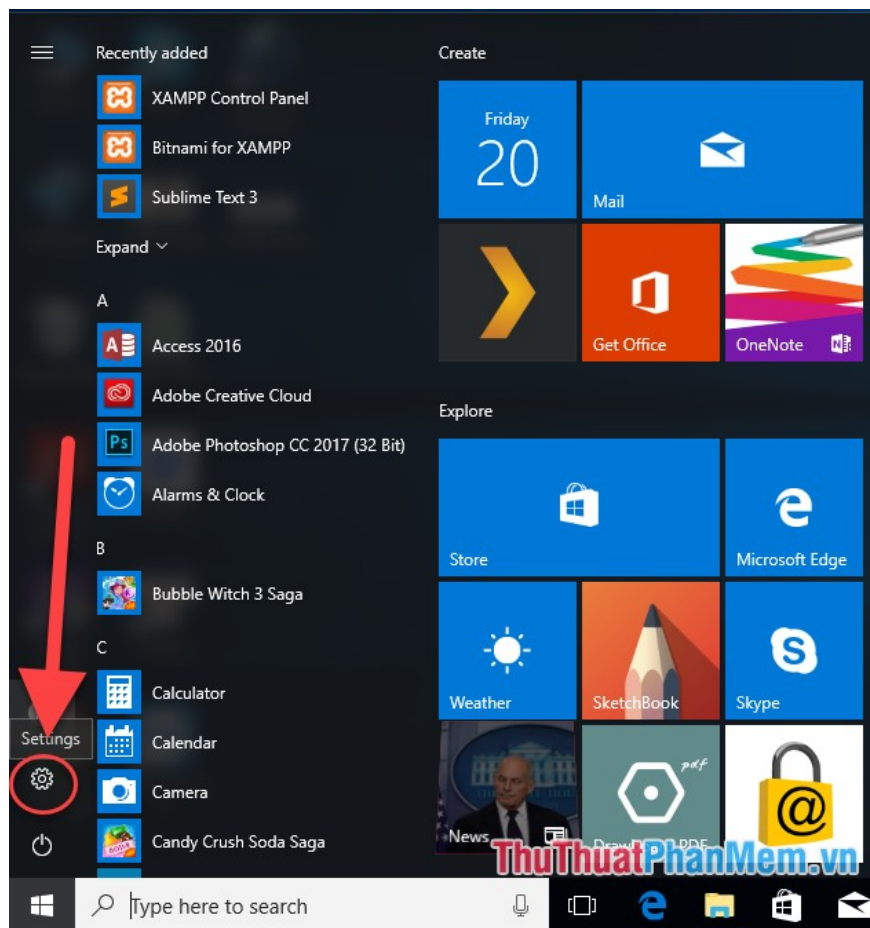


For the Windows version using 4 digits related to the time of release, here the version 1703 immediately release Window 10 is in use in March 2017.

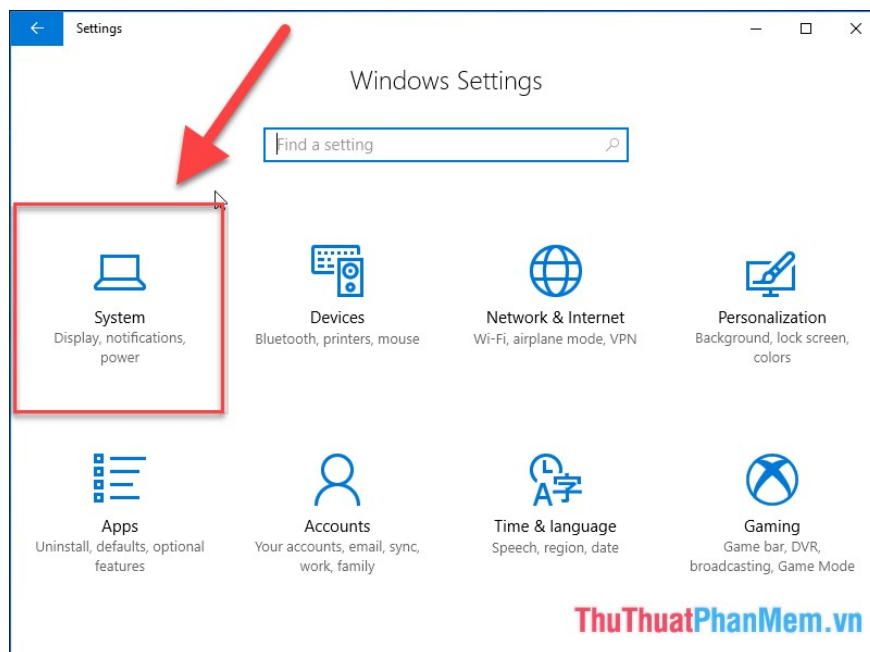
Build 15063.674 is an updated **Build** on October 10, 2017 . Depending on the **Build** code you determine the updated version of the Window.

Method 2: Check the version and build number of Window 10 by viewing the information in the Settings dialog box

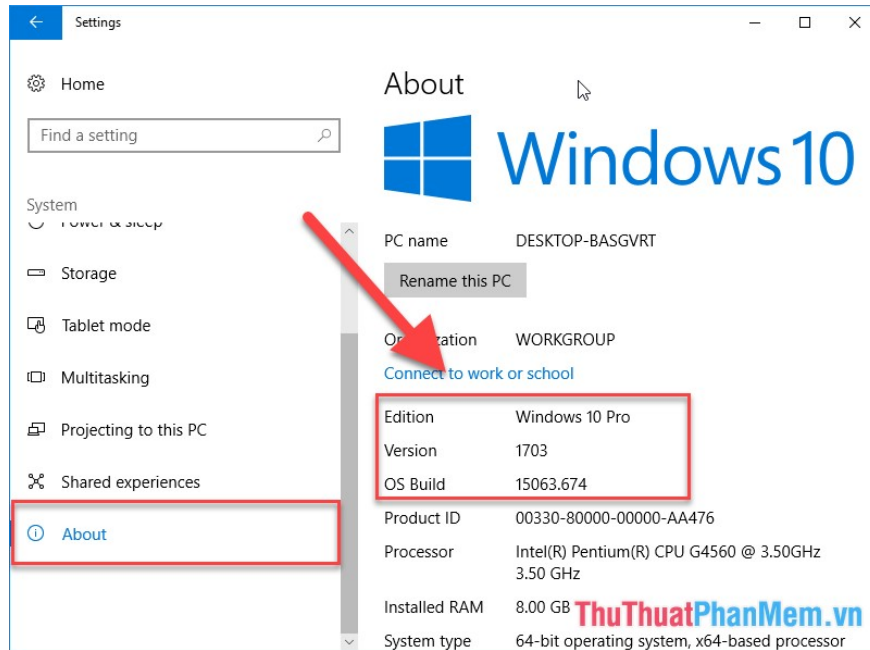
Click **Start** -> select the **Settings** icon :



The **Settings** dialog box appears, click the **System** item :



Move your mouse down to select **About** -> all version information, build number is displayed on the right of the screen:



So with a few simple steps, you can check the version and build number of Windows on your computer so that you can determine whether your computer needs to update to the latest version or not. Good luck!

You finished reading the article "**How to view and check the Version version and build number of Windows 10 are in use**" edited by the [TipsMake](#) team. We hope this article has provided you with many useful tech tips and tricks. You can search for similar articles on tips and guides. Thank you for reading and for following us regularly.