

How to use WinApps to run Windows programs on Linux computers

With WinApps, you can easily manage and run Windows software on Linux, even integrating it into the system and context menus.

The inability to easily run popular Windows applications on Linux has long been a barrier to widespread adoption of Linux. While most applications will run with Wine or in a VirtualBox virtual machine, these solutions are tedious and can require a lot of configuration.

With WinApps, you can easily manage and run Windows software on Linux, even integrating it into the system and context menus.

Set up a virtual machine before installing WinApps

Before installing WinApps for Linux, you need a KVM virtual machine running Windows. The easiest way to do this is to install Virtual Machine Manager.

```
sudo apt-get install virt-manager
```

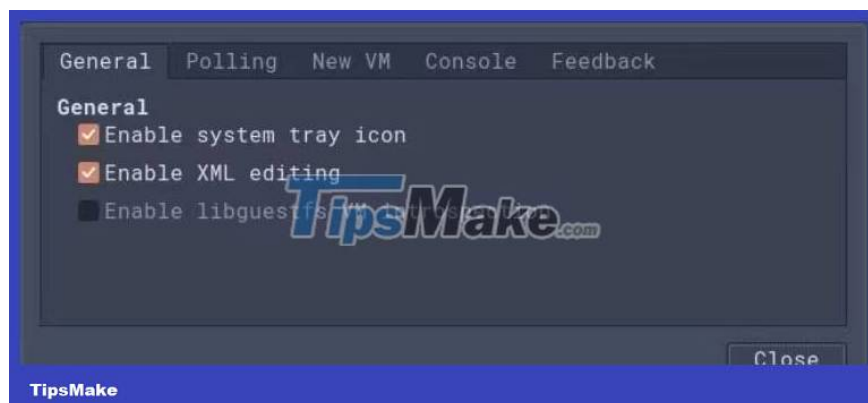
.and add your user to the libvirt group:

```
sudo usermod -aG libvirt username
```

Download the KVM VirtIO ISO driver using:

```
wget https://fedorapeople.org/groups/virt/virtio-win/direct-downloads/stable-virtio
```

Start Virtual Machine Manager, then from the menu select **Edit > Preferences** . Check the **Enable XML editing** box .



Close the dialog box, then click the **Create a new virtual machine** icon .

Select **Local media install** , then select your ISO and go through the wizard. The only value you need to change is the machine name, which should be called "**RDPWindows**" so that WinApps can detect it and make sure you check the **Customize configuration before install** box .

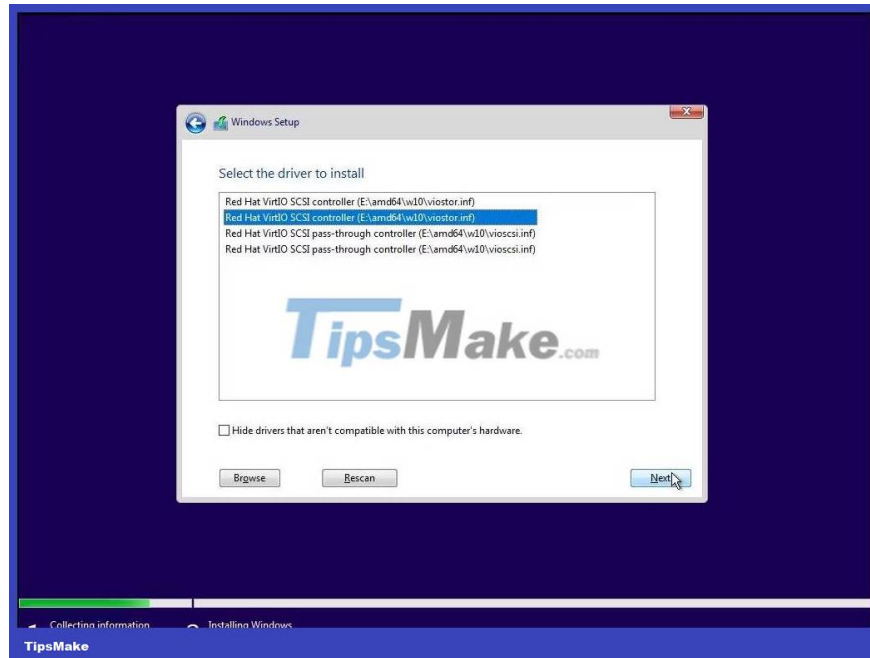


After clicking **Finish** , you will need to do additional configuration before installing Windows:

1. In the **CPU** section , check the box **Copy host CPU configuration**
2. Still in the **CPU** section , switch to the **XML** tab and make sure the **clock** section says:
3. In **Memory** , reduce the current allocation to 1024MB
4. In **Boot Options** , check the box **Start virtual machine on host boot up**
5. In **SATA Disk 1** , select "**VirtIO**" as the disk bus
6. In the **NIC** section , set the Device model to "**virtio**"
7. Click the **Add Hardware** button at the bottom left of the screen, then select "**CDROM**" as the device type
8. Click **Manage** , then select the "**virtio-win.iso**" file you downloaded earlier

Now, you are ready to start installing Windows, so press the **Begin Installation** button .

The installation will proceed like on any other device until you are asked: "Where do you want to install Windows?". There is no location because Windows does not have a driver for your virtual machine.



Click **Load Driver** > **Browse** . The **virtio-win** ISO file will be mounted as a drive, so select that file, navigate to **amd64** > **w10** , then select the w10 driver.

The driver will install and you can continue with the Windows setup process as usual.

Finally, open File Explorer and find the virtio-win ISO, which will be mounted as a drive. Open it, then double click **virt-win-gt-64.exe** and click through the wizard. Windows will want "complete your device setup". Click **Remind me later** to skip the ads, then click **Finish** on the virtio-win wizard.

Open Microsoft Edge for the first and last time, and then paste <https://github.com/Fmstrat/winapps/blob/main/install/RDPApps.reg> into the address bar to see some registry entries you need to add.

Right-click **Raw** above the code snippet, then select **Save target as** . Download it to a location of your choice, right-click the file in File Explorer and select **Merge** .

You gave your VM a name earlier and now, you need to change the name that Windows knows.

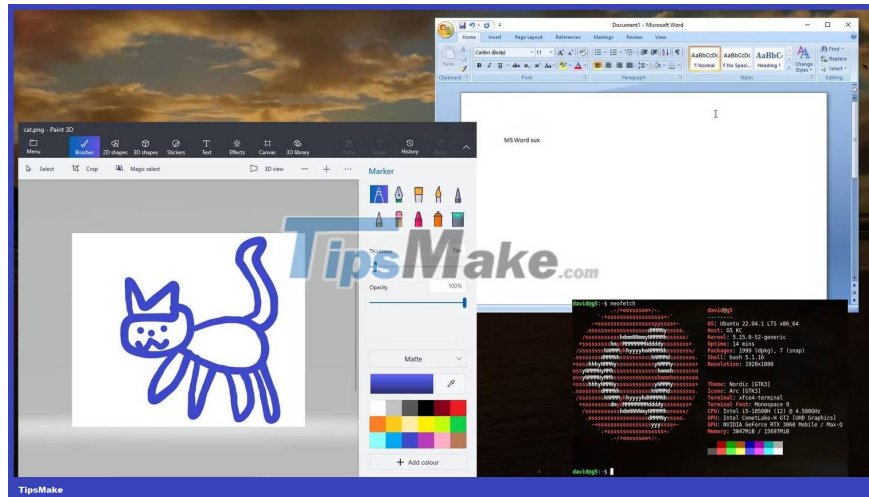
Click in the search box and type **Device Specifications** . In the new window, scroll until you see **Rename this PC** . Click this button, then rename the machine to "**RDPWindows**". Click **Next** > **Restart Later** .

Finally, find **Remote Desktop** in the sidebar and toggle the button to **On**.

Now you can install Windows applications like Microsoft Office, Adobe Photoshop, etc.

When you're happy with your toolkit on Windows, reboot the machine but don't log in. Close the viewer and Virtual Machine Manager.

How to install WinApps for Linux



Now you can access your Windows applications from the Linux desktop and context menus without having to start a complete Windows desktop or deal with Wine.

You finished reading the article "**How to use WinApps to run Windows programs on Linux computers**" edited by the [TipsMake](#) team. We hope this article has provided you with many useful tech tips and tricks. You can search for similar articles on tips and guides. Thank you for reading and for following us regularly.