

How to use Wi-Fi Direct on Windows 10

Windows 10 boasts Wi-Fi Direct, a wireless connection system that makes it easy to connect devices. This article will guide you how to use Wi-Fi Direct on Windows 10 and wireless file transfer.

Wireless data sharing has made rapid strides in the past few years. Thanks to Wi-Fi, Bluetooth and NFC, data can be moved from one device to another easily.

1. [Difference between NFC and Bluetooth](#)

Windows 10 boasts Wi-Fi Direct, a wireless connection system that makes it easy to connect devices. Want to transfer data from a PC to a laptop? Need wireless setup? Connect your phone to the computer?

You can do this thanks to Wi-Fi Direct. This article will guide you how to use Wi-Fi Direct on Windows 10 and wireless file transfer.

1. [Ways to transfer data between your phone and computer without an interface cable](#)
2. [File sharing between PC / Mobile and Mobile without software](#)
3. [The application transfers data via WiFi on Android professional](#)

Introducing Wi-Fi Direct for PC: wireless file transfer

You can think of Wi-Fi Direct as a type of Bluetooth over Wifi. It has the same detection and sending function of Bluetooth but the data is sent using the wireless network. This helps to transfer files with faster speed.

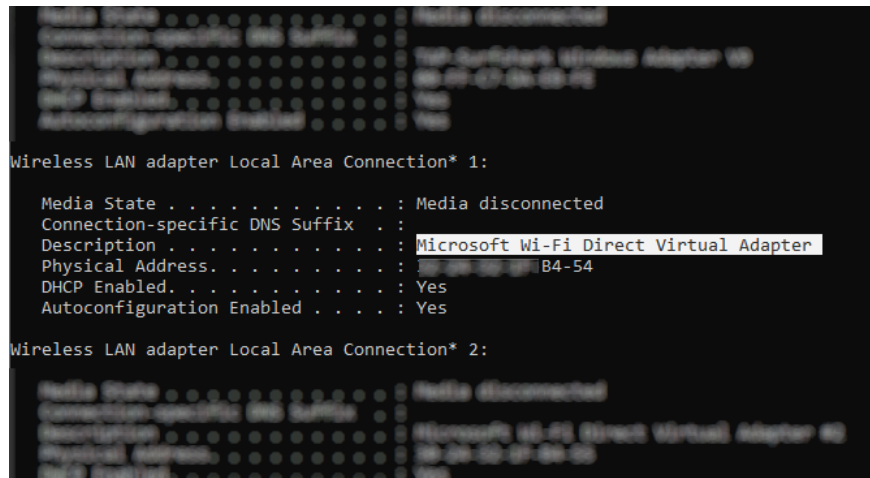
Bluetooth has been around since 1994 and although it's useful for streaming audio and connecting devices, it's not suitable for transferring large files. Wi-Fi Direct has overcome this problem and is likely to replace Bluetooth in the next few years.

At this stage, Wi-Fi Direct is not as popular as Bluetooth.

However, when used successfully, this is a very useful feature to transfer data between Windows 10 and other suitable hardware.

Check for Wi-Fi Direct compatibility on Windows 10 computers

Use Wi-Fi Direct to send files faster and simpler than Bluetooth. However, first, you need to check if the device is compatible with Wi-Fi Direct by pressing **Win + R** , entering **CMD** to open Command Prompt, then enter **ipconfig / all** .



If you have Wi-Fi Direct, you'll see **Microsoft Wi-Fi Direct Virtual Adapter** .

Next, you can transfer data via Wi-Fi Direct.

How to transfer files from Android to Windows using Wi-Fi Direct

Because you need a third-party application to use Wi-Fi Direct, it is important to select the correct application.

Feem is software that supports Wi-Fi Direct for Windows PC and laptop users since Windows 7 and Windows 8.

<https://feem.io/#download>

Feem is free to use, although it has many other paid options. Wi-Fi Direct in Feem is free like live chat. However, you can pay to support iOS, unlimited file transfers and delete ads.

Using Feem to transfer data from Android to a PC or laptop is very simple.

Step 1 . Set Android to a mobile hotspot in **Settings> Network & Internet> Hotspot & tethering** . Then connect the Windows computer to this network.

1. [How to play Wifi on Android phone?](#)

Step 2. Launch Feem on Android and on Windows. You will see that both devices have unusual application names (for example, Junior Raccoon) and passwords. Save this password because you will need it to establish a connection from the beginning.

Step 3. Send files from Android to Windows using Wi-Fi Direct, select the device to and tap **Send File** . Browse to the file and tap **Send** .

0.000% pk36.mp3 0 B/s



I am **Hilarious Turkey**

Wi-Fi: FeemWiFi-JuniorRaccoon



Wi-Fi Direct is on.



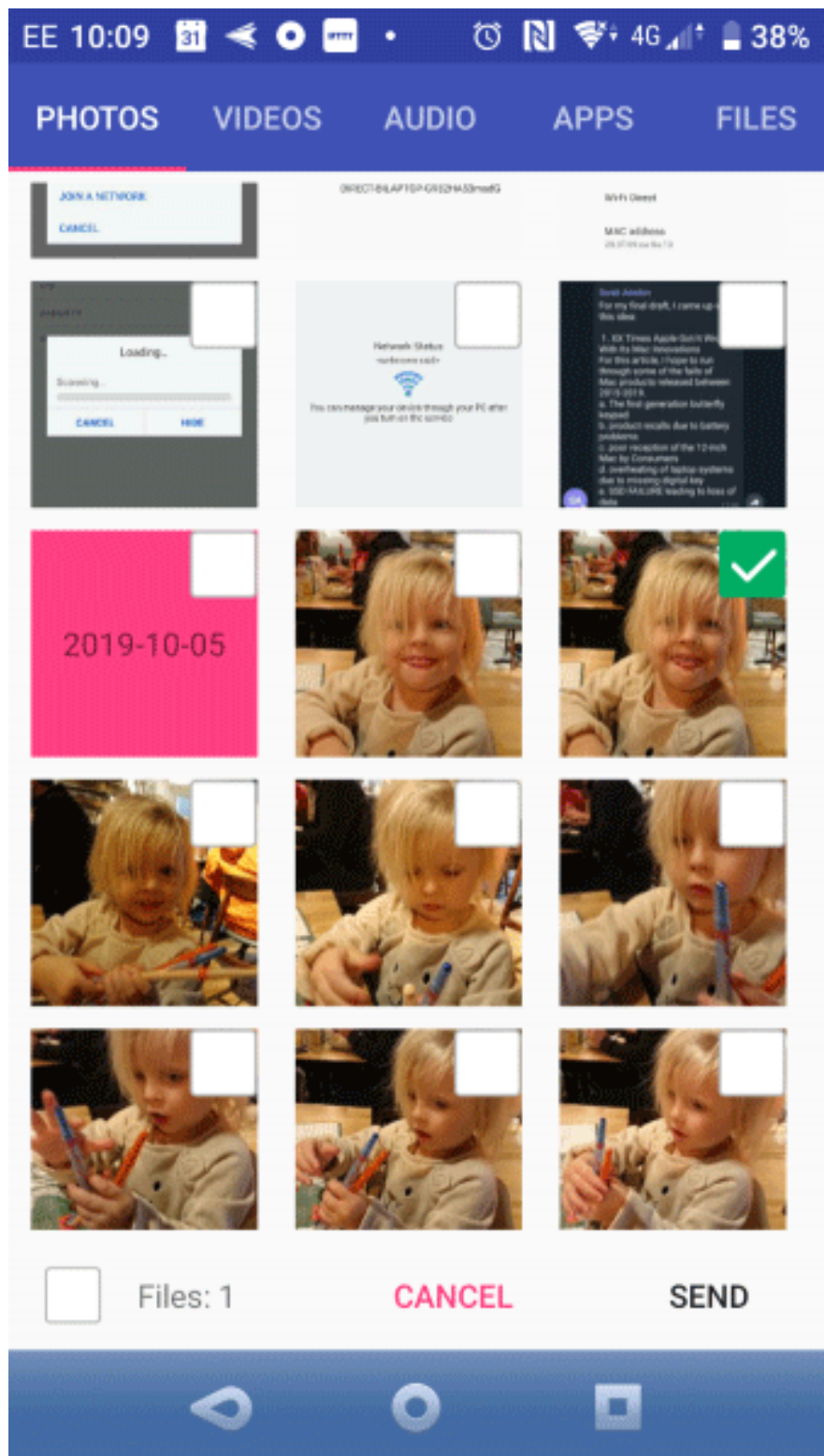
Junior Raccoon

8

100% - pk36.mp3

a few seconds ago - [Connected](#)





After a few moments, the data will be transferred to the computer.

No Wi-Fi Direct? Transfer files from Android to Windows PC using FTP

If your computer does not support Wi-Fi Direct, you can use some tools available on Android to share data remotely with Windows.

ES File Explorer is a popular third-party Android file manager. It has several file management features for local and network use. Among them is a feature called FTP, which provides a direct network connection between the two devices.

Use the FTP feature by going to Network > FTP to display the IP address of an Android device.

Paste it into a file transfer program like FileZilla to browse the content. You can then transfer files between the two devices easily.

Try ES File Explorer if you want to transfer data from a mobile device to a laptop via Wifi without Wi-Fi Direct.

No Wi-Fi Direct, transfer files via Bluetooth

If the device does not support Wi-Fi Direct and does not want to use FTP, the smart solution is to use Bluetooth.

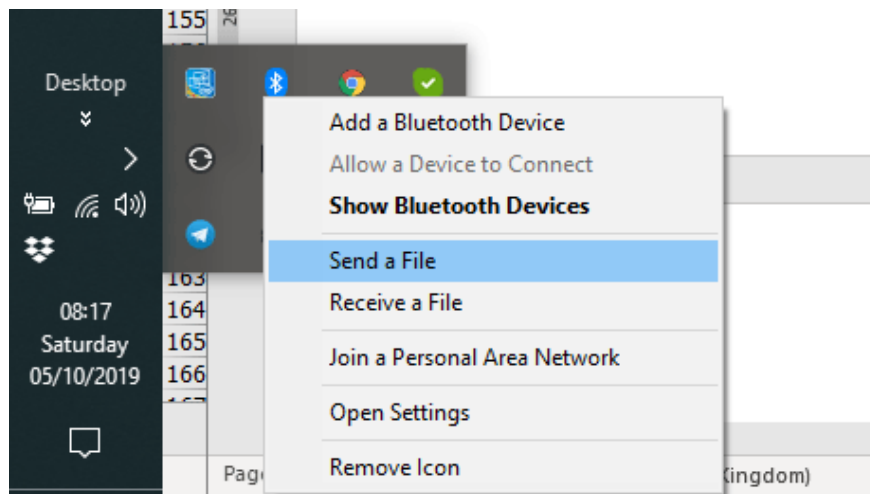
First, make sure your computer is paired with a suitable Bluetooth device (phone, tablet, computer, etc.) before sending the file to it. The method of file transfer via Bluetooth is largely the same on devices and requires both to be set to 'discoverable'.

After that, both devices will search for each other and connect successfully after entering the verification code.

If you don't know where to control Bluetooth on your Windows 10 computer, open **Settings > Devices** .

For the second device in detection mode (check device documentation) select **Add Bluetooth or other device** . Windows 10 will detect the device, follow the instructions to add it.

To pair successfully, switch to the Windows desktop and look for the Bluetooth icon in the system tray / notification area. Left click and select **Send a file** , you will be prompted to select the destination device, then browse for the file.



To send a file, the receiving device is required to confirm that it wants to save the data. Agree and wait for the file transfer to complete.

Note that due to the shorter Bluetooth range, you need to keep the two devices close to each other.

Data transfer rate: Which is best?

You may notice after trying two methods: Wi-Fi Direct is significantly faster than Bluetooth. Recent tests have demonstrated Bluetooth speed as a turtle.

Although Wi-Fi Direct is not faster than transferring data via cable (like USB 2.0 or USB 3.0), it is capable of transferring files of 1.5 GB in 10 minutes, while Bluetooth takes nearly 125 minutes to transfer the same data. Whether.

1. [Differentiate between USB 2.0 and USB 3.0](#)

The option you choose will depend on the data you want to transfer. A USB 3.0 cable with compatible hardware is the fastest option. Wi-Fi Direct ranks behind it and Bluetooth ranks third. Wi-Fi Direct is a mid-range option, but it is not as widely available (or unknown) as Bluetooth.

I wish you successful implementation!

You finished reading the article "**How to use Wi-Fi Direct on Windows 10**" edited by the [TipsMake](#) team. We hope this article has provided you with many useful tech tips and tricks. You can search for similar articles on tips and guides. Thank you for reading and for following us regularly.