

How to use the Shutdown command to schedule shutdown and restart the computer

How to use the Shutdown command to schedule shutdown and restart the computer. Surely one of us has at times forgotten to turn off the computer due to busy work or unexpected sleep.

Surely one of us has at times forgotten to turn off the computer due to busy work or unexpected sleep. It's not a good thing because your computer needs to rest, after all, not to mention that your computer is invaded by others without you knowing it. To solve this, they will use the timer method to turn off the computer, here some of you will think to schedule a computer shutdown, you need to install additional software. But no, we only need to use a brief command line to perform timer shutdown or restart the computer without installing any other software. Let's follow the following tutorial of TipsMake.com offline.

With the timer by the following command you can perform on: Windows XP, Windows Vista, Windows 7, 8, 8.1 and Windows 10.

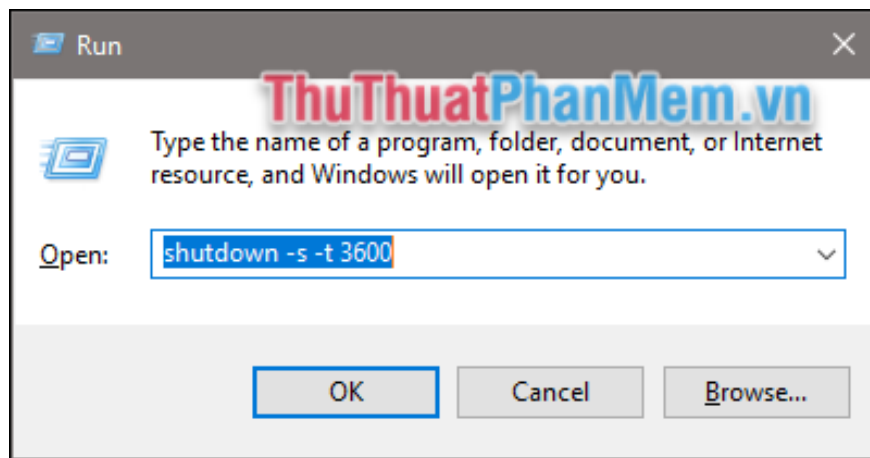
The steps are as follows:

First, press Windows + R to open the Run dialog box. After the Run dialog box appears, enter the following command:

shutdown -s -t 3600

Inside:

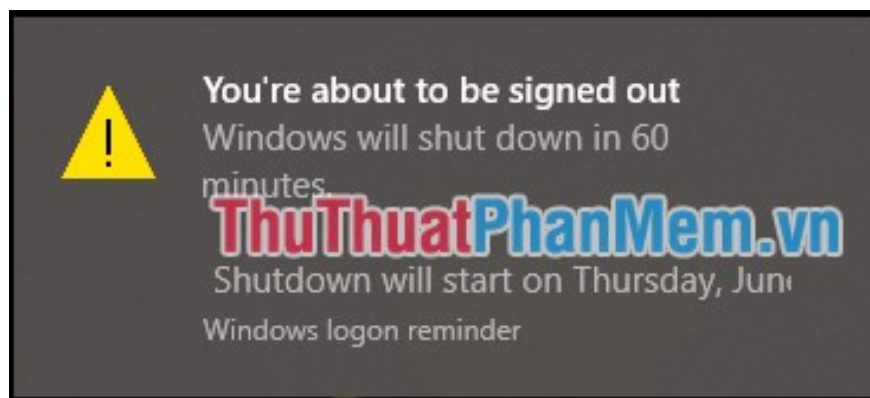
1. **shutdown** : Turn off the computer
2. **s** : shorthand for shutdown
3. **t** : stands for time
4. **3600** : The shutdown timer time is in seconds (3600 seconds = 1 hour).



Depending on how much time you want to schedule, convert hours or minutes to seconds to enter the command. For example, some common time frames have been changed to seconds:

1. **5 minutes** : shutdown -s -t 300
2. **10 minutes** : shutdown -s -t 600
3. **15 minutes** : shutdown -s -t 900
4. **30 minutes** : shutdown -s -t 1800
5. **1 hour** : shutdown -s -t 3600
6. **2 hours** : shutdown -s -t 7200
7. **3 hours** : shutdown -s -t 10800
8. **4 hours** : shutdown -s -t 14400
9. **5 hours** : shutdown -s -t 18000
10. **12 hours** : shutdown -s -t 43200
11. **24 hours** : shutdown -s -t 86400

After entering the command, click OK and a message will appear, as shown below is the message on windows 10:



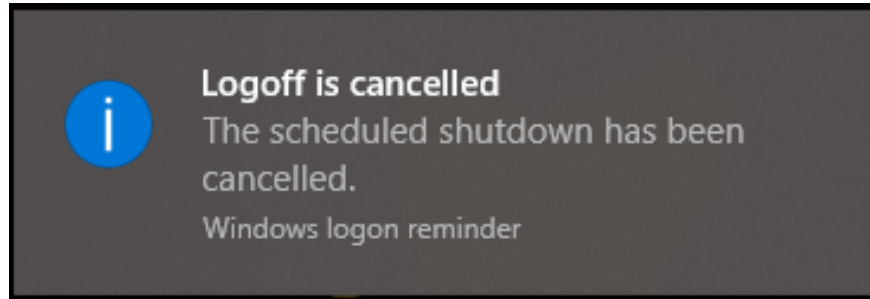
In addition to the shutdown timer function, you can also schedule the Restart of the computer by using the following command:

shutdown -r -t 3600

In case you want to cancel the shutdown timer, enter the command:

shutdown -a

When the message Logoff is canceled as shown below, the timer has been successfully canceled.



Above Thuthuatphanmem.vn has instructed you to schedule a shutdown by a simple command in windows. Hope the article will be helpful to you. Good luck!

You finished reading the article "**How to use the Shutdown command to schedule shutdown and restart the computer**" edited by the [TipsMake](#) team. We hope this article has provided you with many useful tech tips and tricks. You can search for similar articles on tips and guides. Thank you for reading and for following us regularly.