

How to Use the Remote Desktop Connection in XP

Have you ever, EVER wanted to use your dear ol' laptop or desktop at someone's house? Well, thanks to XP's technology, it's as easy as 1, 2, 3! Make sure both computers are connected in a local area network and that you know its IP address...

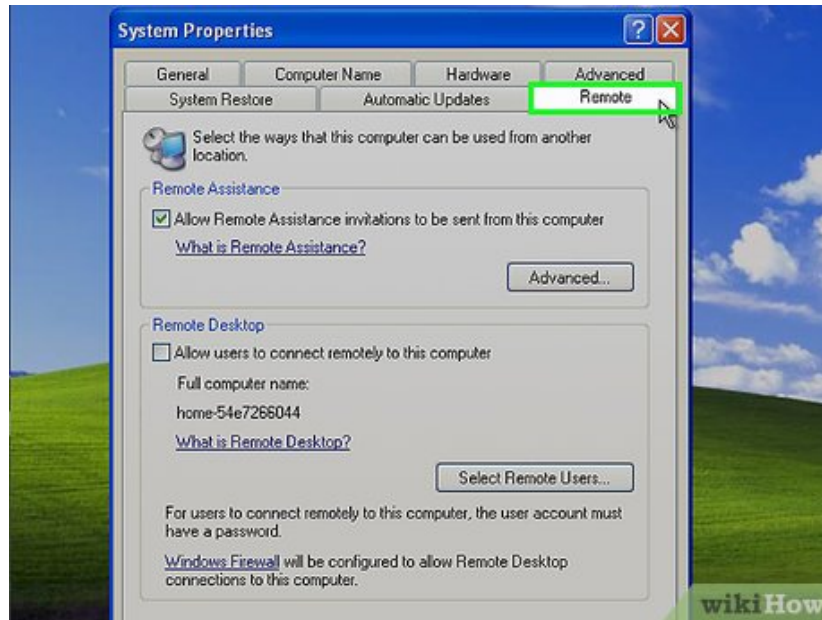
Method 1 of 2:

On Your Friend's/Co-worker's Computer



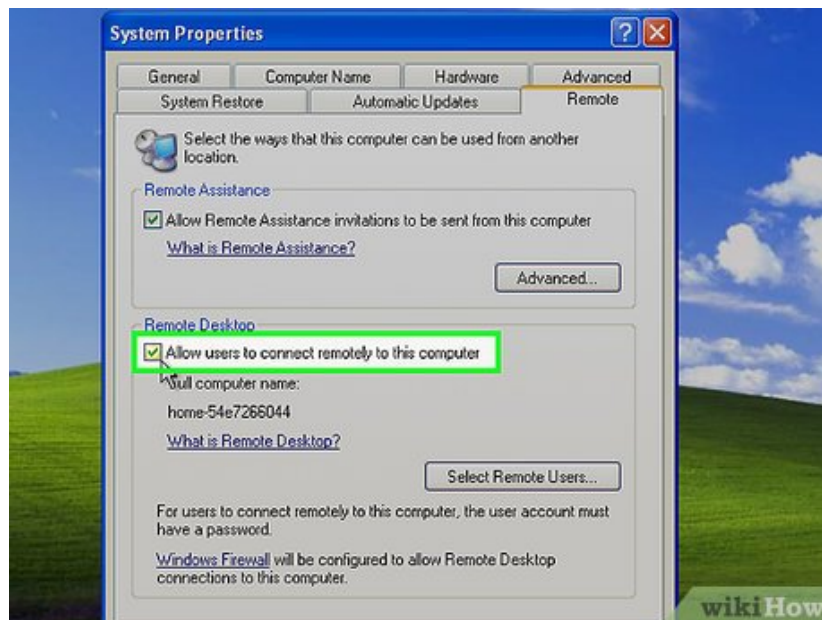
Go to START, right click MY COMPUTER

2.



Select **PROPERTIES**, click the **REMOTE** tab

3.



Tick 'allow users to connect remotely to this computer'

4.

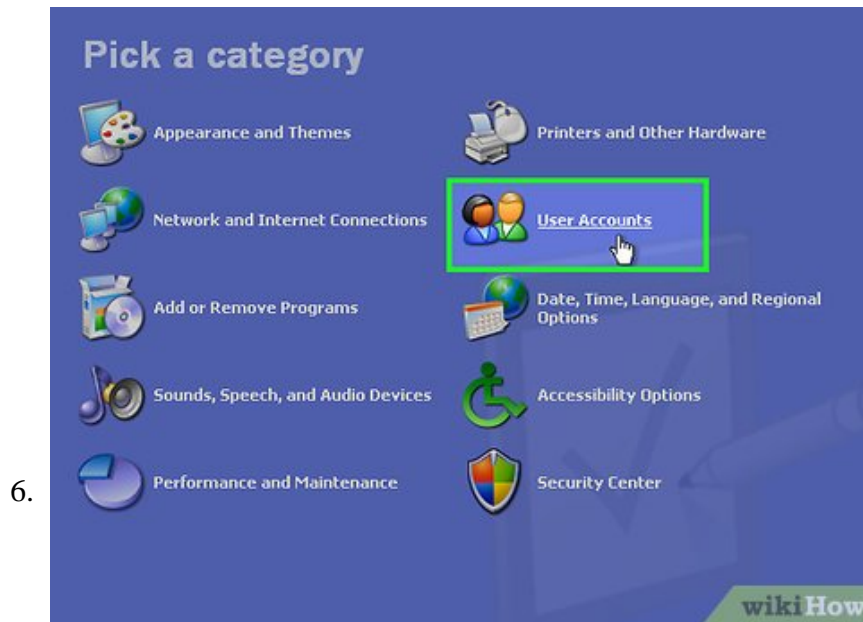


Then OK

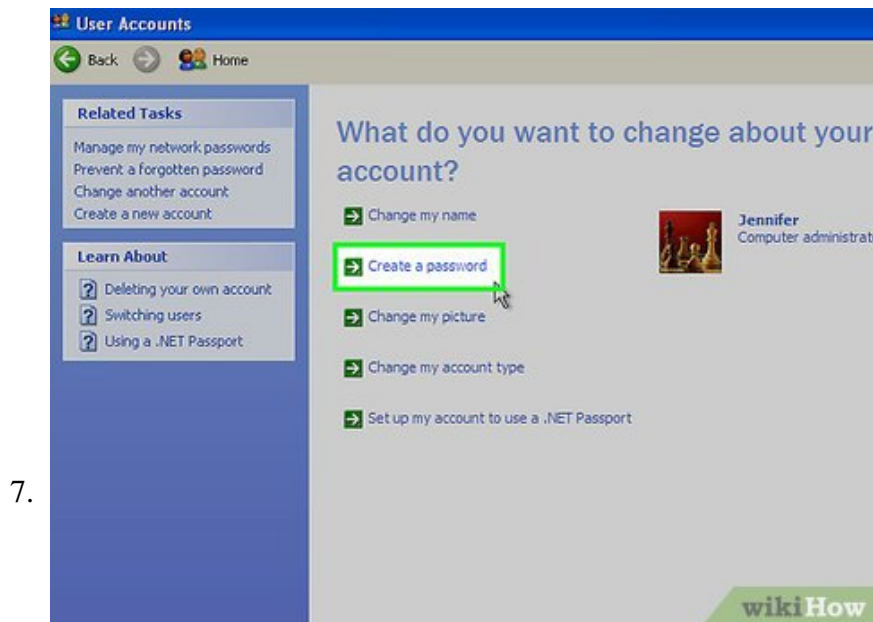
5.



Go to START again, Open CONTROL PANEL,

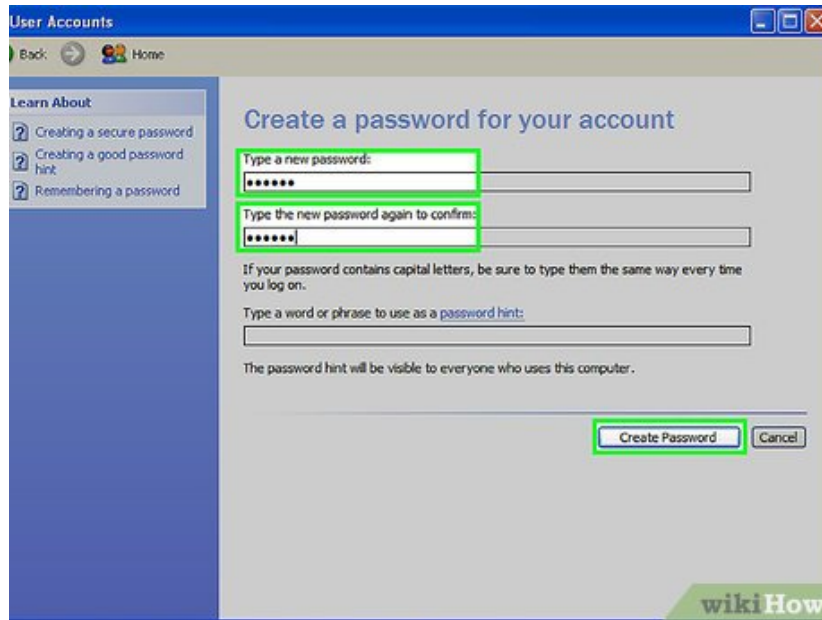


Select **USER ACCOUNTS**, select which account you want to use under **PICK ACCOUNT TO CHANGE**



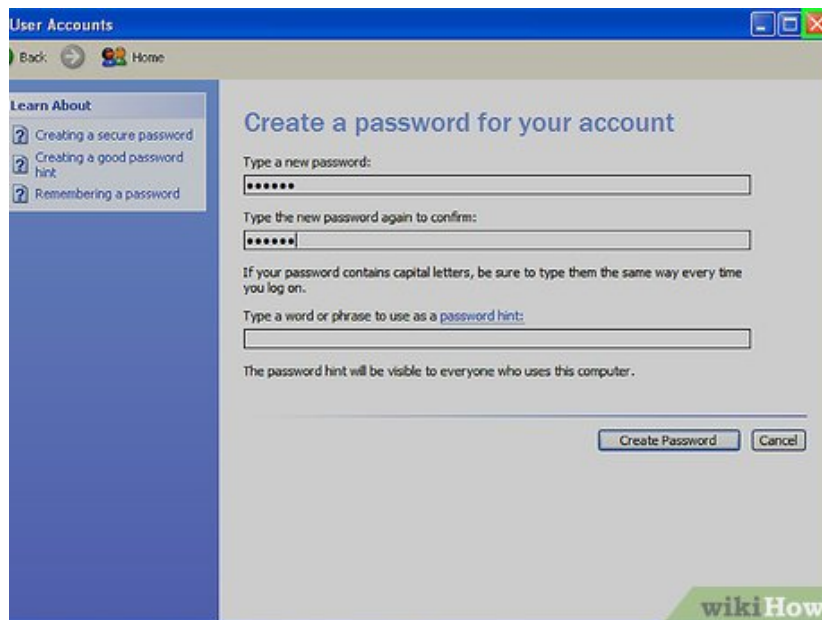
Choose **'CREATE A PASSWORD'**

8.



Type in the new password and confirm it, then click 'CREATE PASSWORD.'

9.



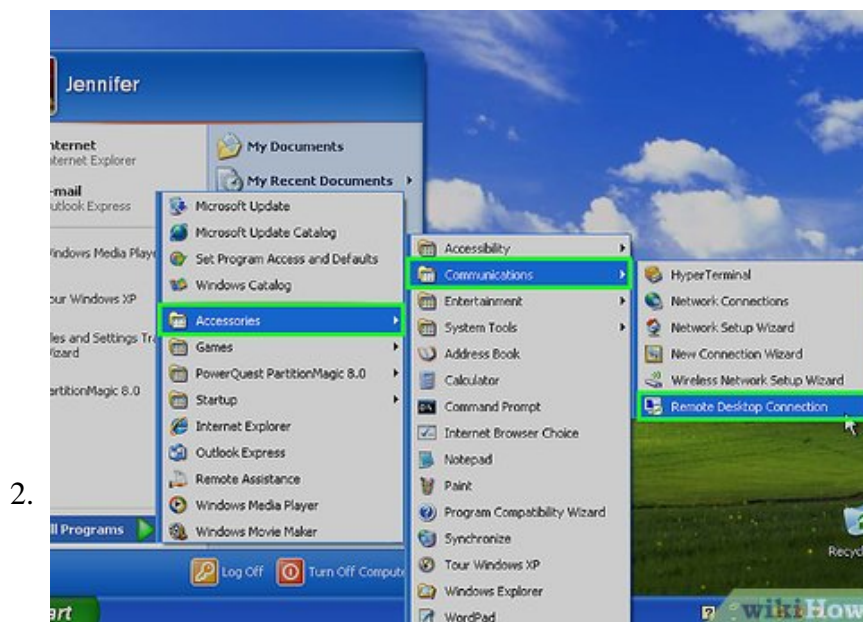
Close the Control Panel window.

Method 2 of 2:

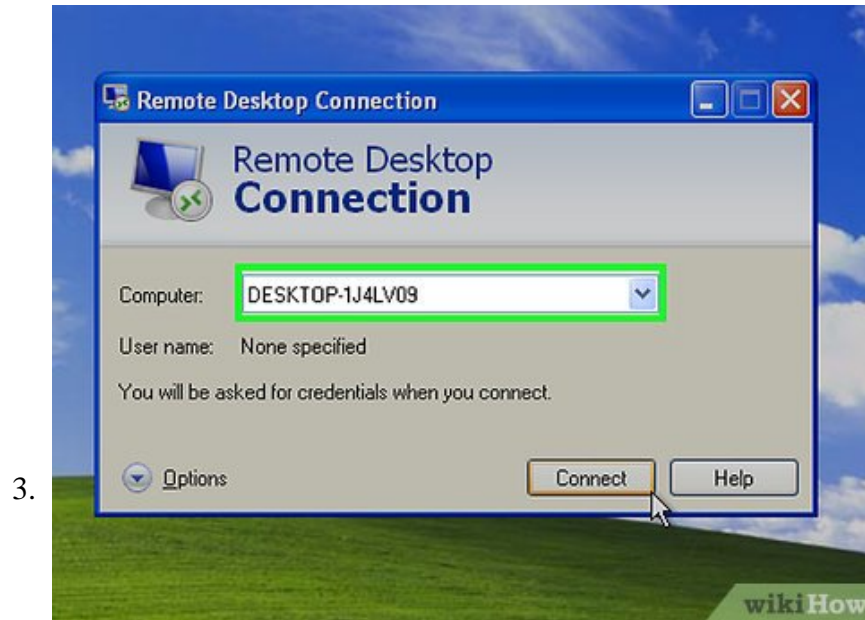
On Your Computer



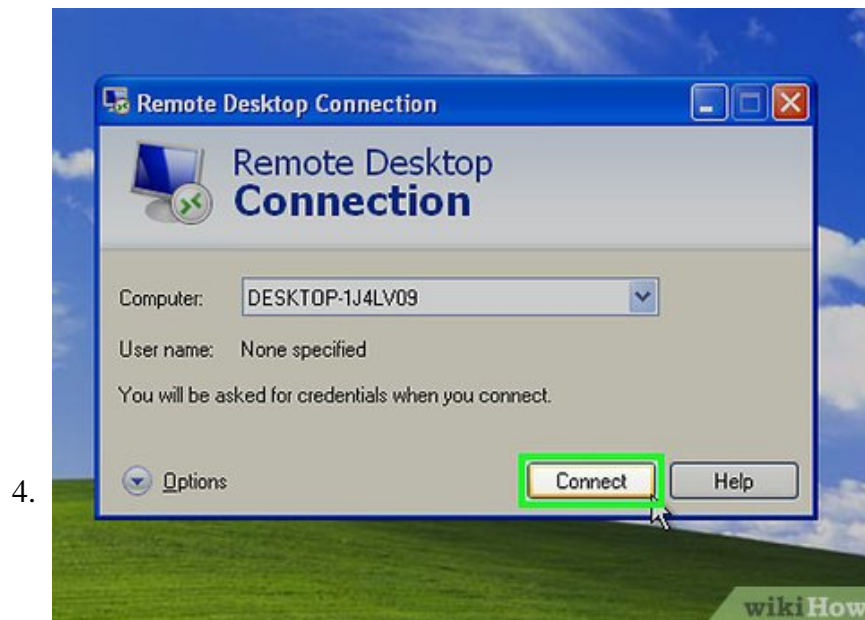
Go to START, select ALL PROGRAMS



Select ACCESSORIES, select COMMUNICATIONS, then click REMOTE DESKTOP CONNECTION, A window pops, with the computer BAR empty



Type in the IP ADDRESS or the NAME OF THE COMPUTER



Then click CONNECT, You will be asked for the USERNAME and PASSWORD



Put in the account name and password, then OK. It will open the desktop of the other computer.



Ta-da! You are now on the desktop or laptop you chose!

You finished reading the article "**How to Use the Remote Desktop Connection in XP**" edited by the [TipsMake](#) team. We hope this article has provided you with many useful tech tips and tricks. You can search for similar articles on tips and guides. Thank you for reading and for following us regularly.