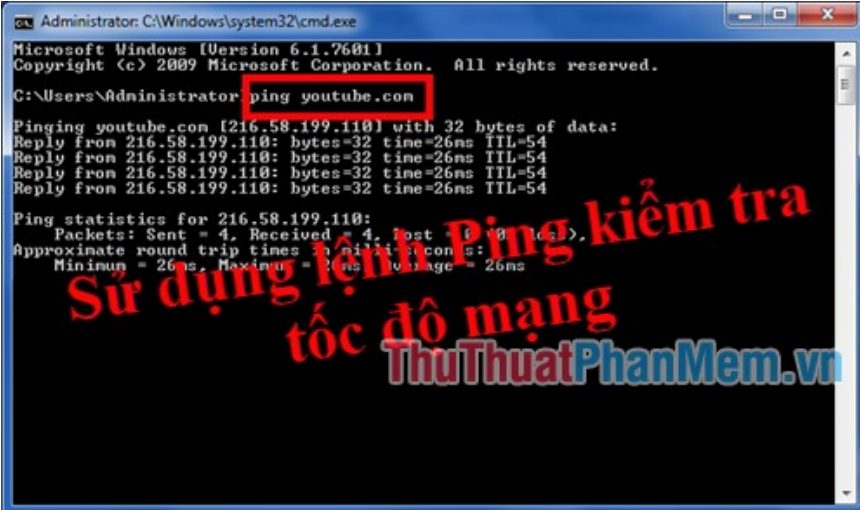


How to use the Ping command to test the network

How to use the Ping command to test the network. Do you want to know if the current network status is good or not? Or do you want to know the network speed of the networks Viettel, FPT, VNPT .. or the network speed of the websites you visit? One of the easiest ways to

Do you want to know if the current network status is good or not? Or do you want to know the network speed of the networks Viettel, FPT, VNPT . or the network speed of the websites you visit? One of the simplest ways to test the network is to use the Ping command on the cmd window. If you do not know how to use the Ping command to check the network, please follow the article below.



```
Administrator: C:\Windows\system32\cmd.exe
Microsoft Windows [Version 6.1.7601]
Copyright (c) 2009 Microsoft Corporation. All rights reserved.

C:\Users\Administrator> ping youtube.com

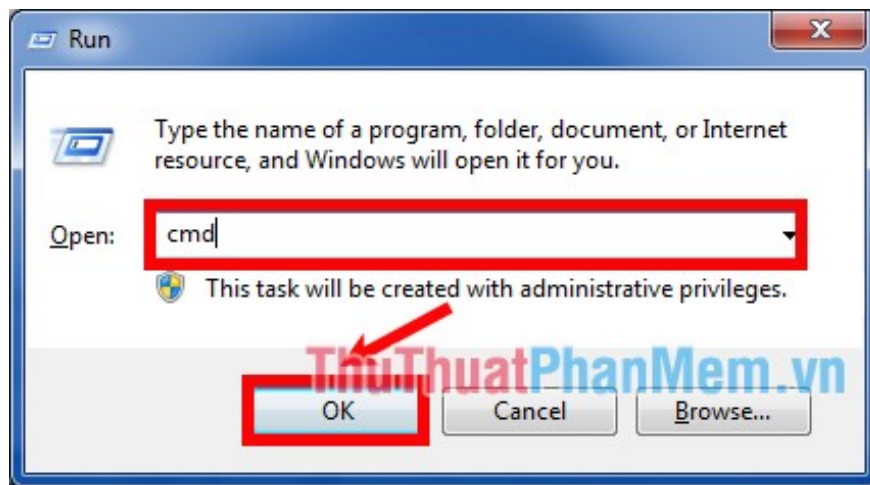
Pinging youtube.com [216.58.199.110] with 32 bytes of data:
Reply from 216.58.199.110: bytes=32 time=26ms TTL=54
Reply from 216.58.199.110: bytes=32 time=26ms TTL=54
Reply from 216.58.199.110: bytes=32 time=26ms TTL=54
Reply from 216.58.199.110: bytes=32 time=26ms TTL=54

Ping statistics for 216.58.199.110:
    Packets: Sent = 4, Received = 4, Lost = 0 (0% loss),
    Approximate round trip times in milliseconds:
        Minimum = 26ms, Maximum = 26ms, Average = 26ms
```

Below are details of using the Ping command to check network speed, please refer.

Step 1: Open the CMD window

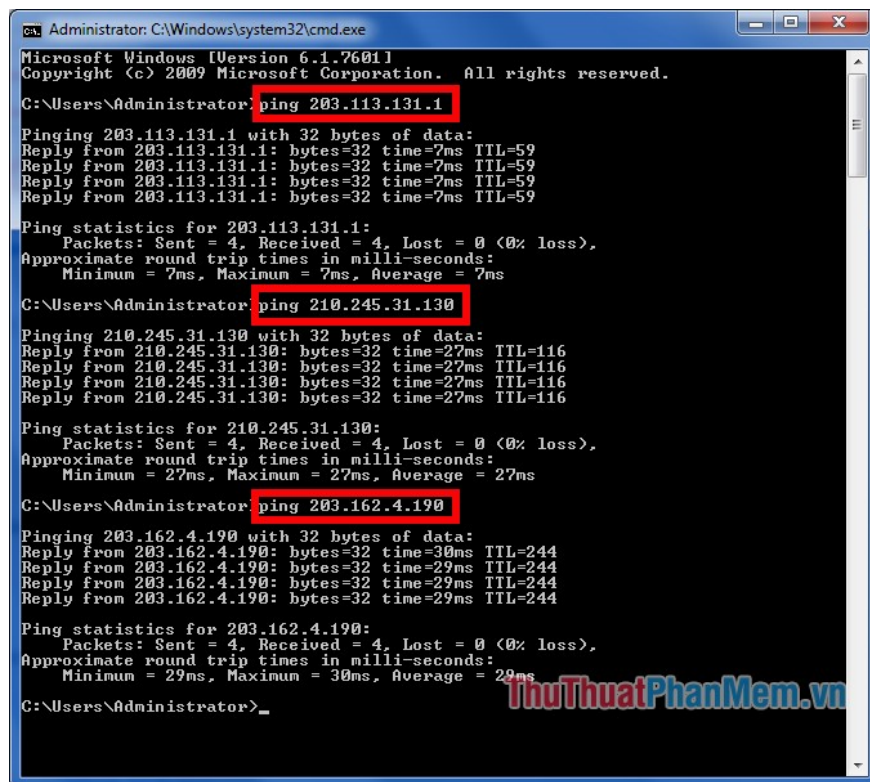
First press the **Windows** + **R** key combination to open the **Run** dialog box , then enter the keyword cmd and click **OK** to open the cmd window.



Step 2: Use the Ping command on the CMD

The command to ping the networks of Viettel, FPT, VNPT is:

1. **Viettel** : ping 203.113.131.1
2. **FPT** : ping 210.245.31.130
3. **VNPT** : ping 203.162.4.190



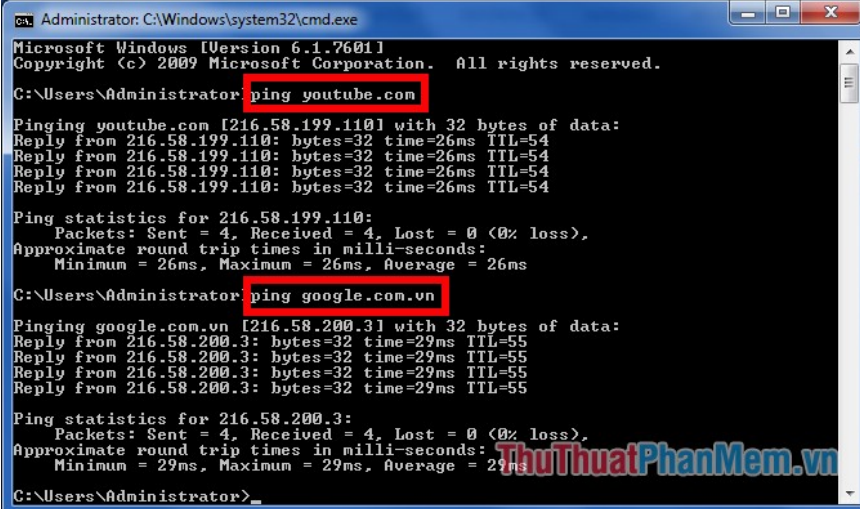
Command to ping websites: **ping [domain_name]**

For example:

ping youtube.com

ping google.com

Enter the ping command and press Enter.



```
Administrator: C:\Windows\system32\cmd.exe
Microsoft Windows [Version 6.1.7601]
Copyright (c) 2009 Microsoft Corporation. All rights reserved.

C:\Users\Administrator>ping youtube.com

Pinging youtube.com [216.58.199.110] with 32 bytes of data:
Reply from 216.58.199.110: bytes=32 time=26ms TTL=54
Reply from 216.58.199.110: bytes=32 time=26ms TTL=54
Reply from 216.58.199.110: bytes=32 time=26ms TTL=54
Reply from 216.58.199.110: bytes=32 time=26ms TTL=54

Ping statistics for 216.58.199.110:
    Packets: Sent = 4, Received = 4, Lost = 0 (0% loss),
    Approximate round trip times in milli-seconds:
        Minimum = 26ms, Maximum = 26ms, Average = 26ms

C:\Users\Administrator>ping google.com.vn

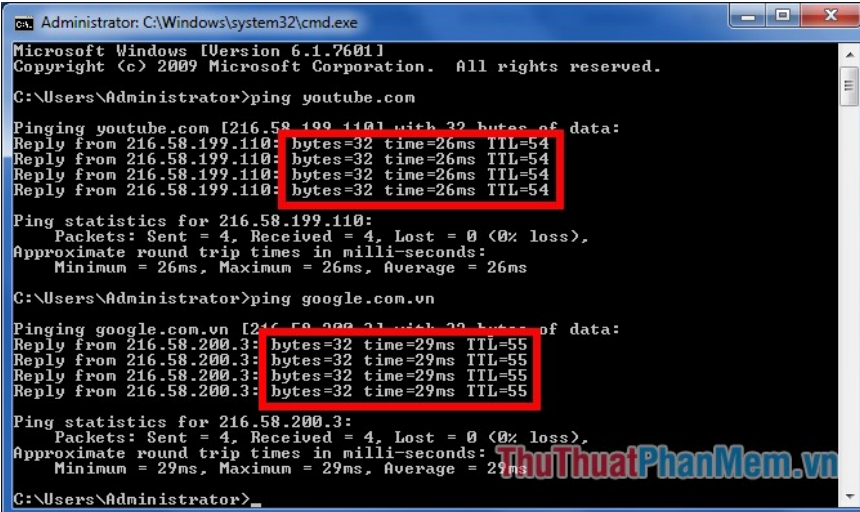
Pinging google.com.vn [216.58.200.3] with 32 bytes of data:
Reply from 216.58.200.3: bytes=32 time=29ms TTL=55
Reply from 216.58.200.3: bytes=32 time=29ms TTL=55
Reply from 216.58.200.3: bytes=32 time=29ms TTL=55
Reply from 216.58.200.3: bytes=32 time=29ms TTL=55

Ping statistics for 216.58.200.3:
    Packets: Sent = 4, Received = 4, Lost = 0 (0% loss),
    Approximate round trip times in milli-seconds:
        Minimum = 29ms, Maximum = 29ms, Average = 29ms

C:\Users\Administrator>
```

You should note the following parameters:

1. **Bytes = 32** The default file size when sending files is 32 bytes.
2. **Time** : the time (delay) of the packet, the smaller the time, the faster the speed.
3. **TTL (Time to Live)**: If the destination address is the Windows operating system, the largest TTL is 128, and if the destination address is the Linux and Unix operating systems, the largest TTL is 64. Each time a packet is passed through a router, TTL will be deducted 1. So when using the ping command you can guess what operating system HOST is running and through how many routers.
4. Announcement **Request timed out** , it means that the site lost connection or firewall blocking the packets.



```
Administrator: C:\Windows\system32\cmd.exe
Microsoft Windows [Version 6.1.7601]
Copyright (c) 2009 Microsoft Corporation. All rights reserved.

C:\Users\Administrator>ping youtube.com

Pinging youtube.com [216.58.199.110] with 32 bytes of data:
Reply from 216.58.199.110: bytes=32 time=26ms TTL=54
Reply from 216.58.199.110: bytes=32 time=26ms TTL=54
Reply from 216.58.199.110: bytes=32 time=26ms TTL=54
Reply from 216.58.199.110: bytes=32 time=26ms TTL=54

Ping statistics for 216.58.199.110:
    Packets: Sent = 4, Received = 4, Lost = 0 (0% loss),
    Approximate round trip times in milli-seconds:
        Minimum = 26ms, Maximum = 26ms, Average = 26ms

C:\Users\Administrator>ping google.com.vn

Pinging google.com.vn [216.58.200.3] with 32 bytes of data:
Reply from 216.58.200.3: bytes=32 time=29ms TTL=55
Reply from 216.58.200.3: bytes=32 time=29ms TTL=55
Reply from 216.58.200.3: bytes=32 time=29ms TTL=55
Reply from 216.58.200.3: bytes=32 time=29ms TTL=55

Ping statistics for 216.58.200.3:
    Packets: Sent = 4, Received = 4, Lost = 0 (0% loss),
    Approximate round trip times in milli-seconds:
        Minimum = 29ms, Maximum = 29ms, Average = 29ms

C:\Users\Administrator>
```

So you can quickly check the network speed by using the ping command on the cmd window. Good luck!

You finished reading the article "**How to use the Ping command to test the network**" edited by the [TipsMake](#) team. We hope this article has provided you with many useful tech tips and tricks. You can search for similar articles on tips and guides. Thank you for reading and for following us regularly.
