

How to use the Google Circle to Search feature

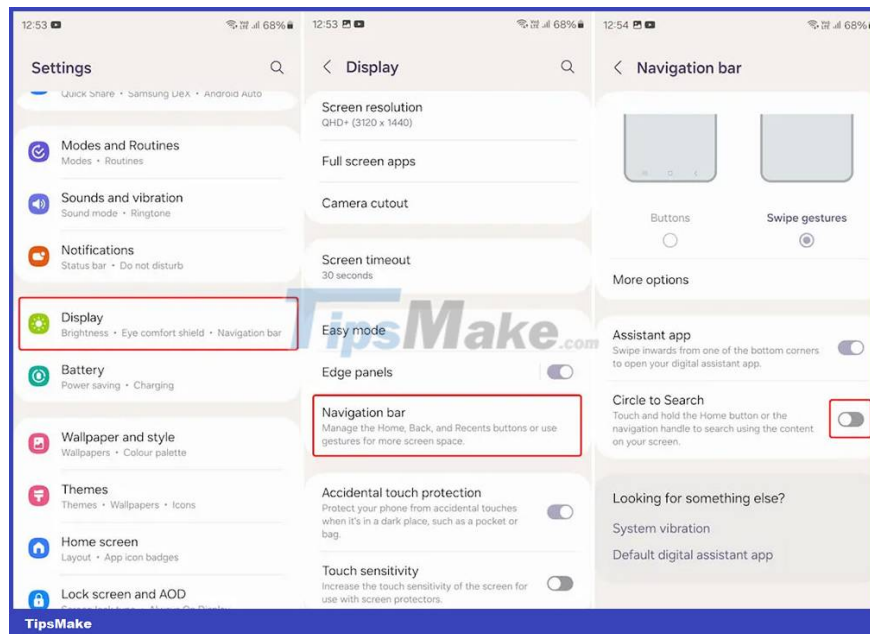
The Google Circle to Search feature was first introduced on the Samsung Galaxy S24 series and later rolled out on the Pixel 8 series.

The Google Circle to Search feature was first introduced on the Samsung Galaxy S24 series and then deployed on the Pixel 8 series. Through this feature, users can easily search for any object on the screen on Google, through circling, drawing, marking or clicking on that object. Below are instructions for using the Google Circle to Search feature.

Instructions for using Google Circle to Search

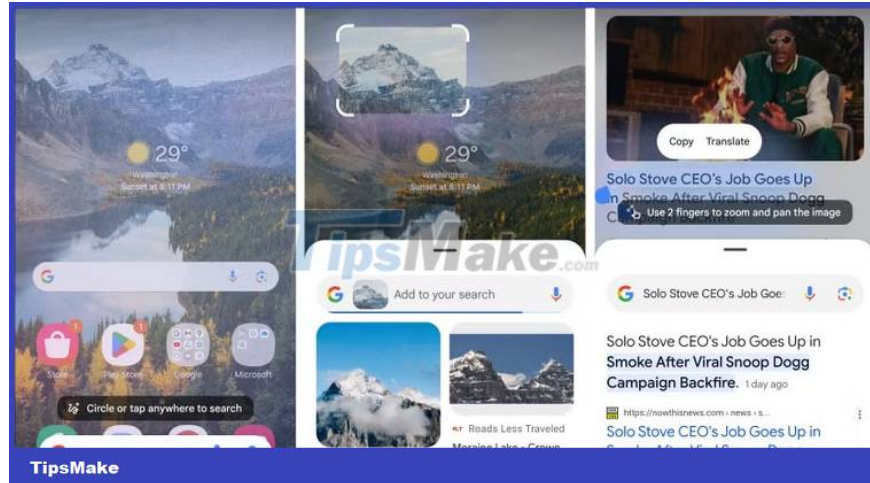
Step 1:

First you need to turn on the Google Circle to Search feature on your phone. You access Settings on your phone and then click Display. Scroll down and click on the Navigation bar, then activate Circle to Search to use on your phone.



Step 2:

To get information about certain details displayed on the screen, including the wallpaper you use, we press and hold on the gesture navigation bar. At this point, users will see a circular notification or click on the object they want to search for. We will circle or draw on the object we want to search for information.



You will immediately see search results on Google as shown below. We drag up the screen to expand the results interface in Google. If you want to search for text, press and hold on the text to search.

You finished reading the article "**How to use the Google Circle to Search feature**" edited by the [TipsMake](#) team. We hope this article has provided you with many useful tech tips and tricks. You can search for similar articles on tips and guides. Thank you for reading and for following us regularly.