

How to use the backup and restore feature in the Linksys router

In the case when you need to reset the router to factory default settings, you will be able to restore the previous configuration with a backup configuration file. To backup and restore router configuration, follow the instructions below.

The Backup and Restore Configuration feature in the Linksys router allows end users to back up all configurations made to the router. In the case when you need to reset the router to factory default settings, you will be able to restore the previous configuration with a backup configuration file. This will save you time by not having to go through the manual reconfiguration process of the router.

To backup and restore router configuration, follow the instructions below.

NOTE : For some Linksys router models (E series and EA series) using Linksys Connect, you first need to access the **Advanced settings** to perform the Backup and Restore Configuration feature.

Backup Linksys router configuration

Step 1:

Access your router's web-based setup page by opening a web browser like Internet Explorer or Safari. On the **Address** bar , enter the router's local IP address, then press **Enter**. When the login prompt appears, enter the **Username** and **Password** of the router.

NOTE : The default Linksys router's default local IP address is **192.168.1.1** , while the default password is **admin** and the username field is left blank. Refer to: List of default Linksys router passwords.

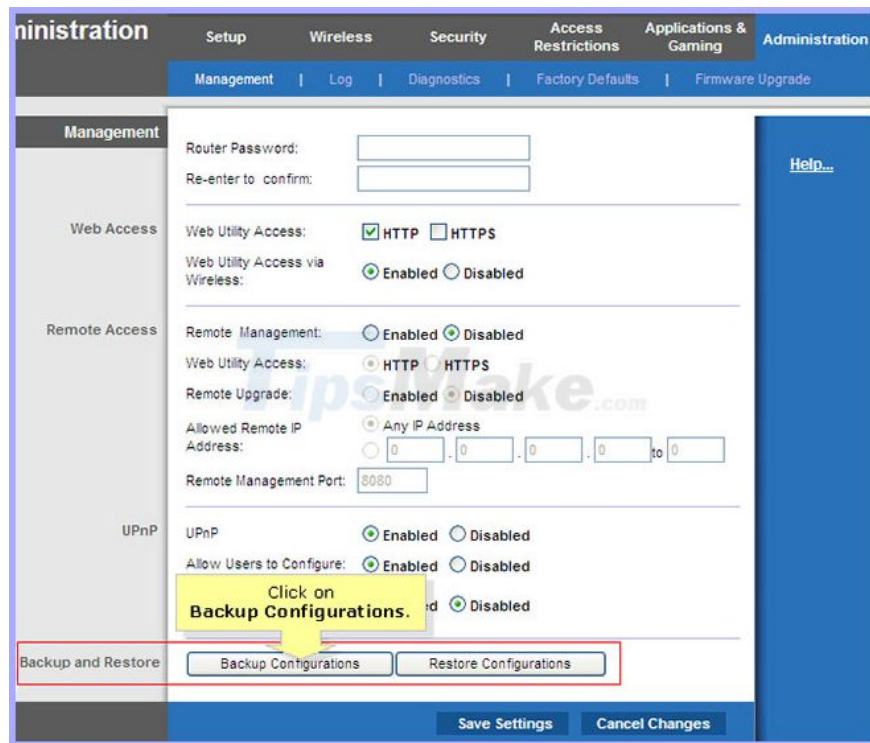
If you have changed the password before and forgot it, you need to reset the device. Refer to: How to reset the Linksys router to its factory default settings for more details.

Step 2:

When the web-based setup page appears, select **Administration**. You will automatically be taken to the **Management** tab .

Step 3:

Click the **Backup Configurations** button on the **Backup and Restore** column .

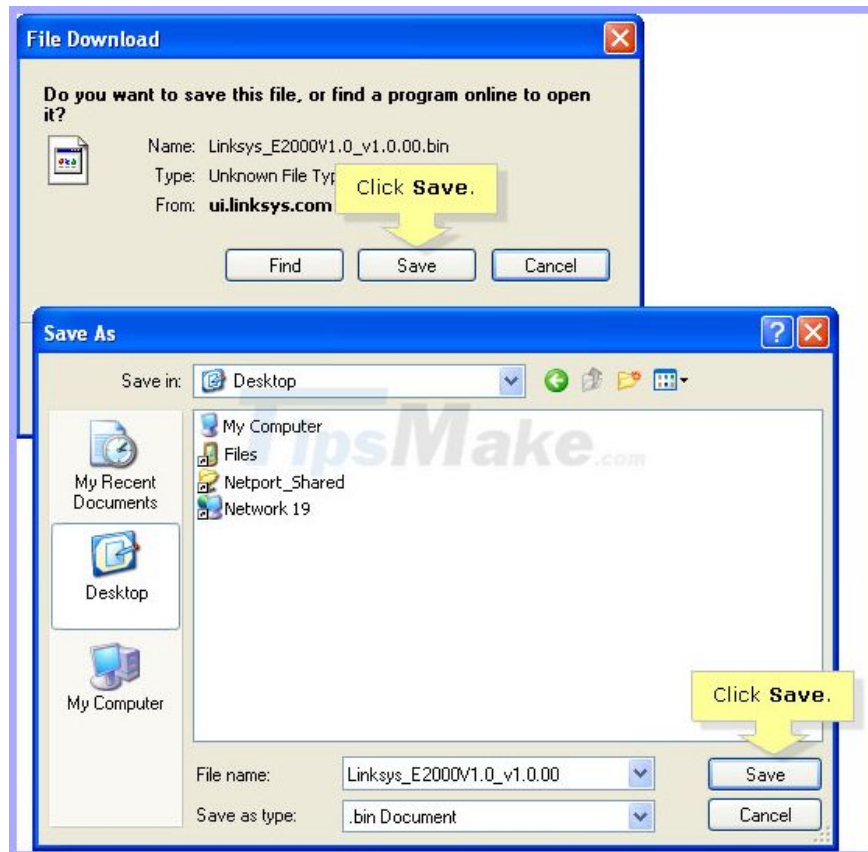


Click the Backup Configurations button on the Backup and Restore column

NOTE : The **Backup and Restore option** is at the bottom of the **Management** page .

Step 4:

A new window will prompt you to save the configuration file (with the .bin file extension). Click **Save** on the **File Download** window and select a location to save the configuration file, then click **Save**.



Click Save on the File Download window

NOTE : In this example, the article used the Linksys E2000 router. The name of the configuration file may vary depending on the router used.

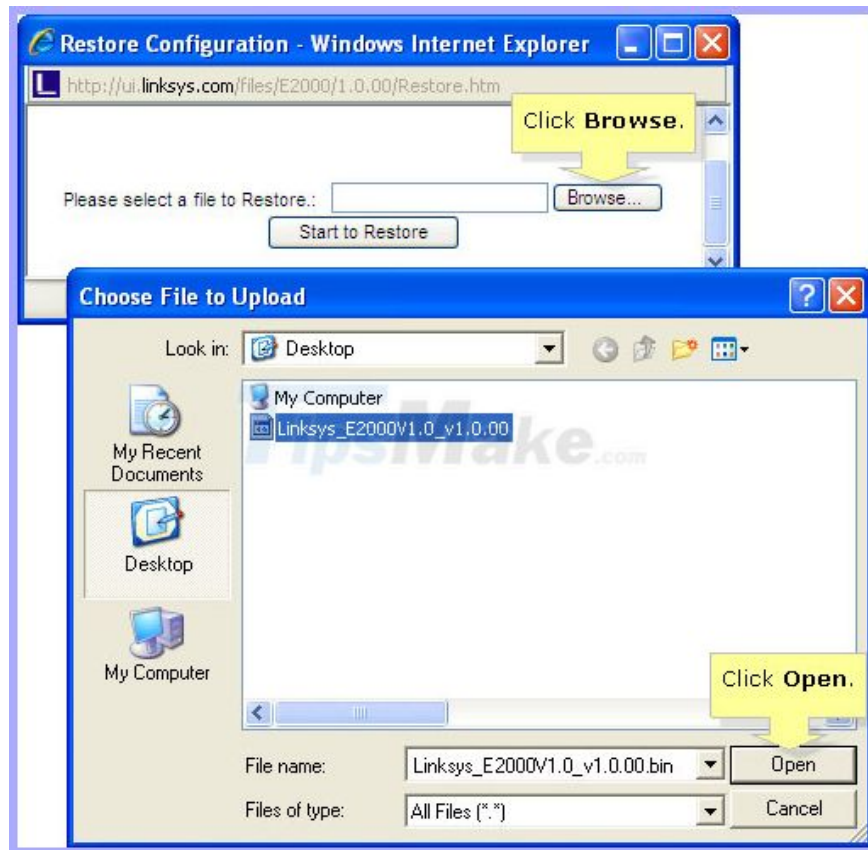
Restore Linksys router configuration

Step 1:

From the **Management** page , click the **Restore Configurations** button on the **Backup and Restore** column .

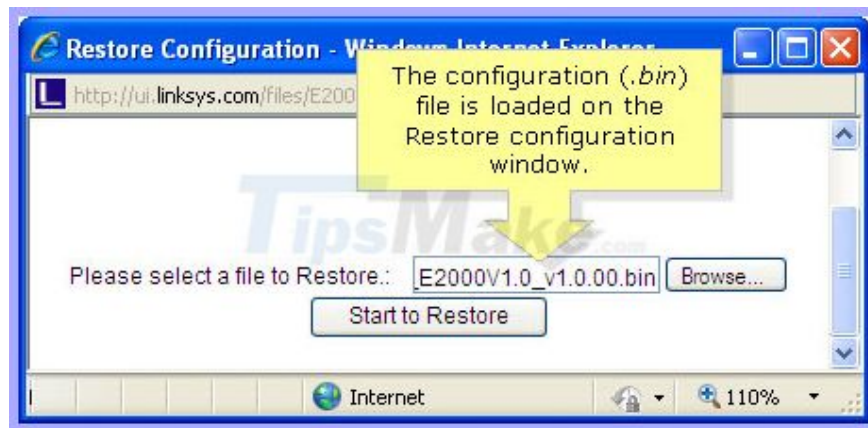
Step 2:

A new window will appear for you to select the configuration file (.bin) to be restored. Click **Browse** to locate the file. When you locate the file, select the file and click **Open**.



Click Browse to locate the file

NOTE : The configuration file (.bin) will be loaded on the **Restore Configuration** window .



The configuration file (.bin) will be loaded on the Restore Configuration window

Step 3:

Click **Start to Restore** to begin restoring the configuration.

NOTE : If you have trouble restoring your configuration, perform a firmware upgrade. This will update the firmware on the router to troubleshoot problems and errors that may occur. For instructions on how to upgrade the firmware, refer to the article: [How to upgrade the Firmware for the Wireless Router?](#) For more details. After the upgrade, perform the recovery configuration steps again.

You finished reading the article "**How to use the backup and restore feature in the Linksys router**" edited by the [TipsMake](#) team. We hope this article has provided you with many useful tech tips and tricks. You can search for similar articles on tips and guides. Thank you for reading and for following us regularly.
