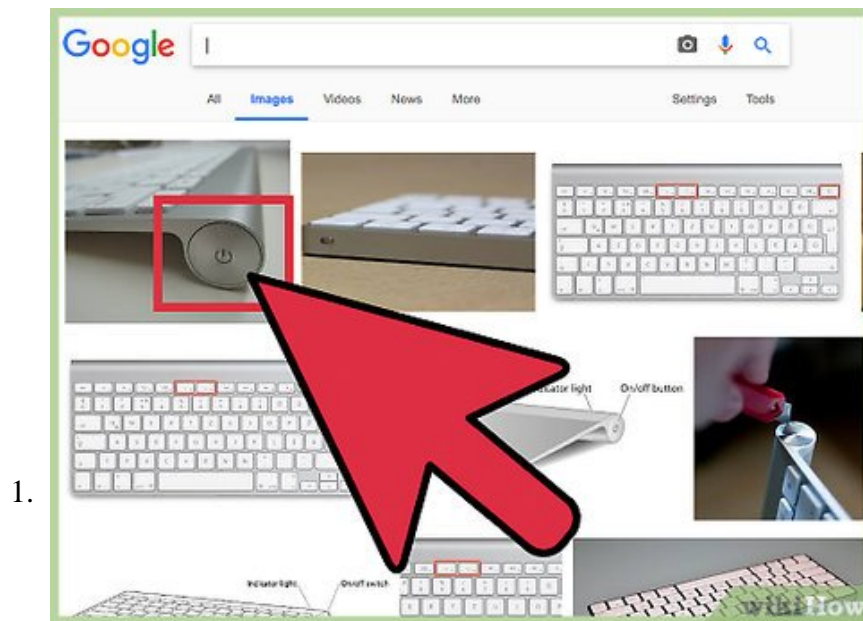


# How to Use the Apple Magic Keyboard

To connect a Magic Keyboard to your Mac, iPhone, iPad, or Apple TV, enable Bluetooth and then press the power button on the keyboard. Once the devices pair, the keyboard will be ready to use. Turn on the Magic Keyboard. The power button is...

Method 1 of 3:

## Using the Magic Keyboard with an iPhone or iPad



**Turn on the Magic Keyboard.** The power button is on the back edge of the keyboard on the left side. When you press it, the green light will turn on.<sup>[1]</sup>

1. The Magic Keyboard has an internal battery that must be charged. If the keyboard doesn't turn on, use the Lightning-to-USB cable to charge it now.

2.



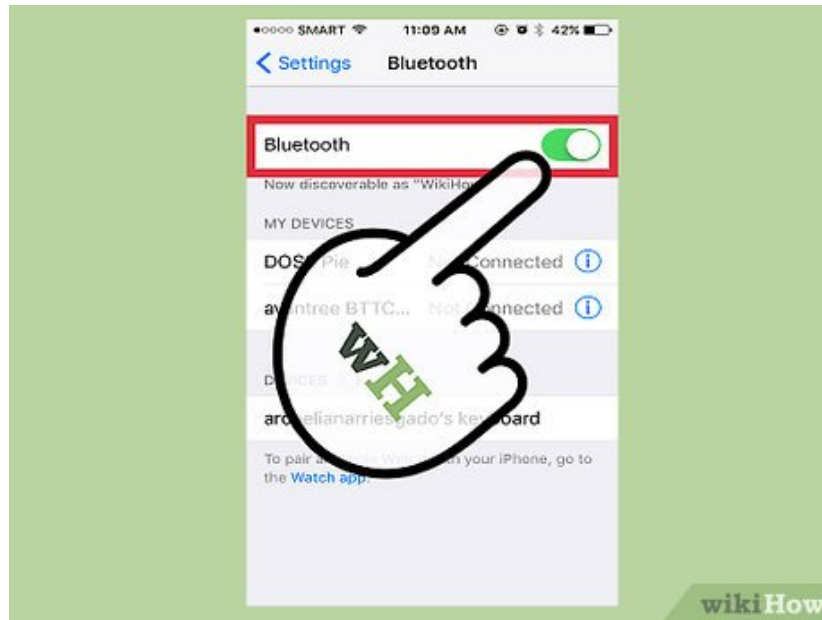
Open **Settings** on your iPad or iPhone.

3.



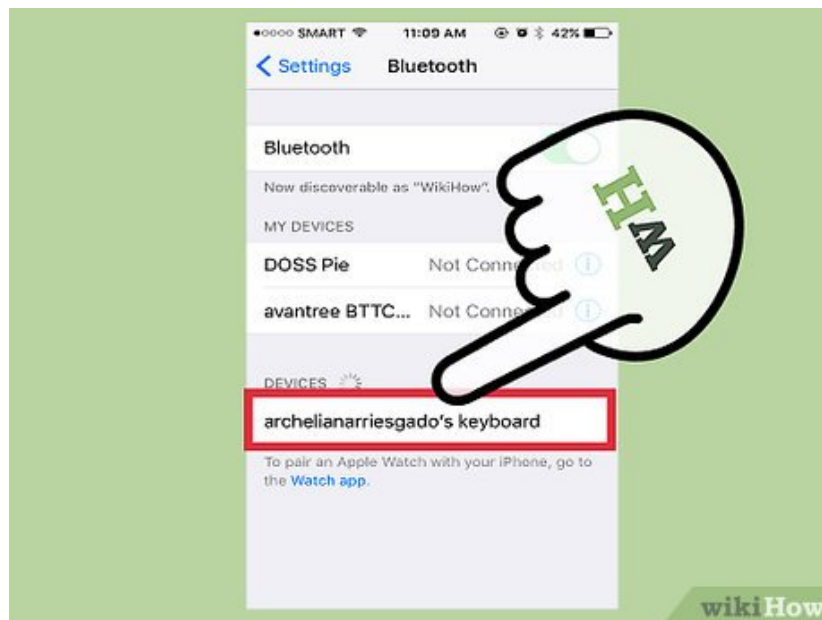
Tap **Bluetooth**.

4.



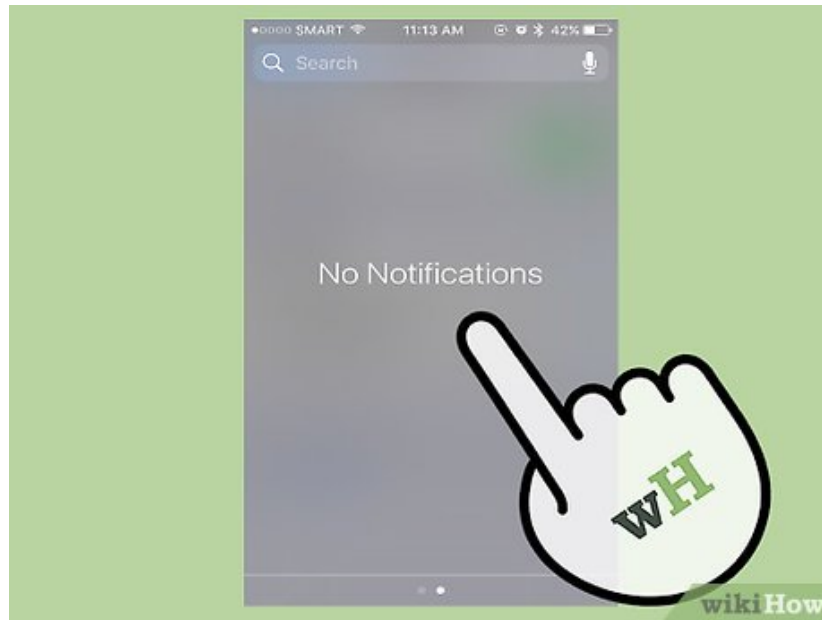
**Make sure the Bluetooth switch is on.** When Bluetooth is turned on, your phone or tablet will scan for Bluetooth devices and display the results.

5.



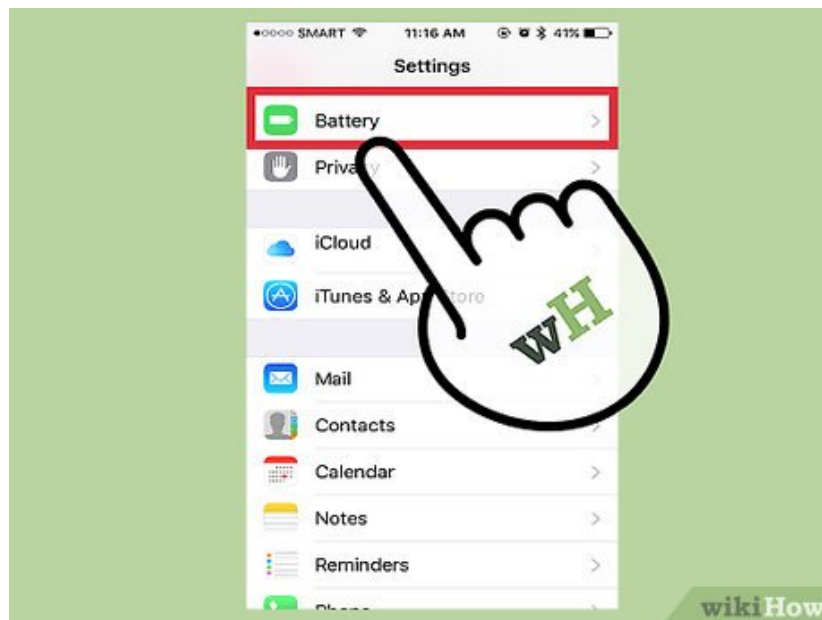
Tap **Magic Keyboard**. The keyboard is now connected and ready to use.

6.



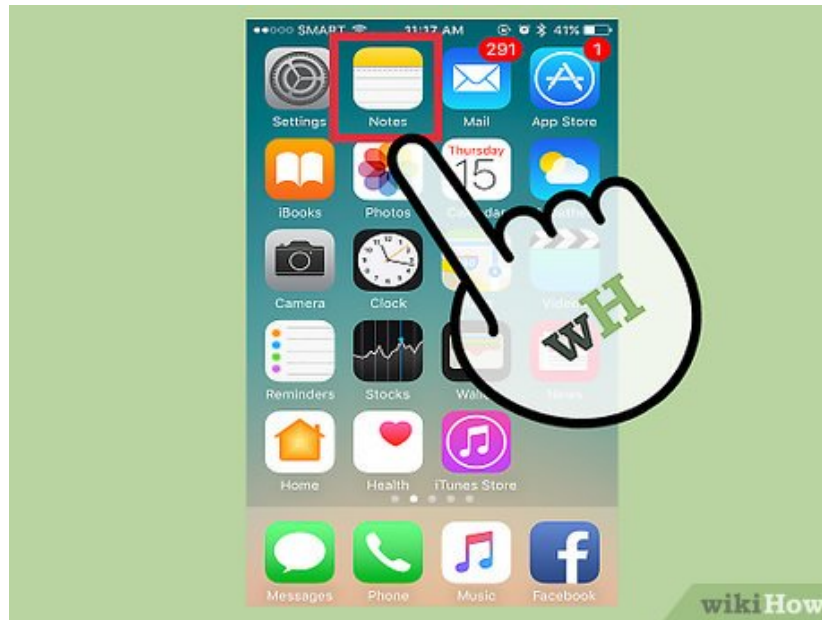
**Swipe down from the top of the screen.** The Notification Center will appear.<sup>[2]</sup>

7.



**Scroll to the Batteries section.** The battery charge level for the Magic Keyboard is listed next to 'Bluetooth UPS.'

8.



**Open an app you use often.**

9.



**Press and hold a modifier key.** This will show all shortcuts in the app that use this key. Try it with the following keys:

1. Shift
2. Option
3. Command
4. Control

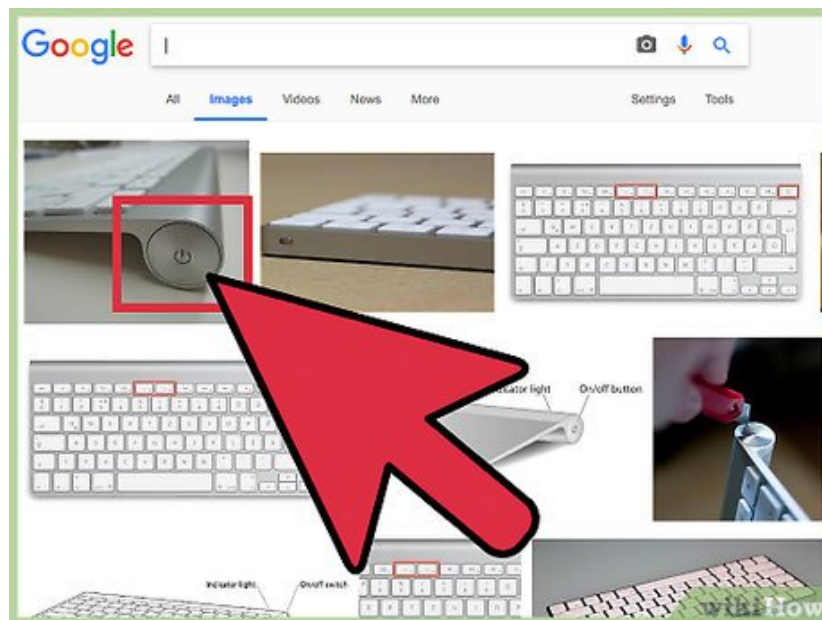
10.



Use **Command** and **Tab** to switch between apps. Here's how:<sup>[3]</sup>

1. Press and hold **Command** and **Tab** together.
2. Continue holding **Command** as you tap the **Tab**.
3. Each time you tap **Tab**, the device will cycle through open apps.

11.



**Press and hold the keyboard power button.** This will turn off the keyboard. Though the keyboard goes into sleep mode on its own, you'll probably want to turn it off if you won't be using it for a while.

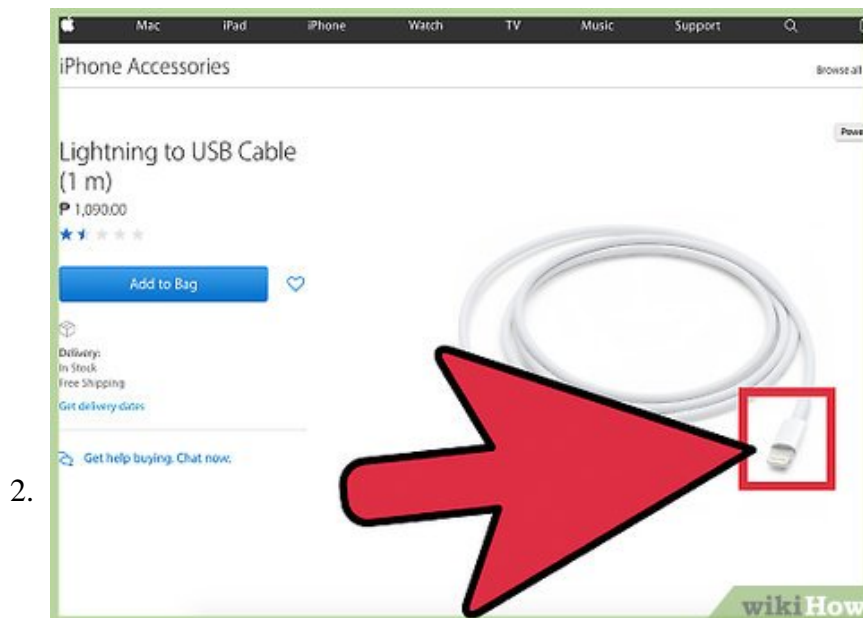
Method 2 of 3:

## Using the Magic Keyboard with a Mac



### Enable Bluetooth on your Mac.<sup>[4]</sup>

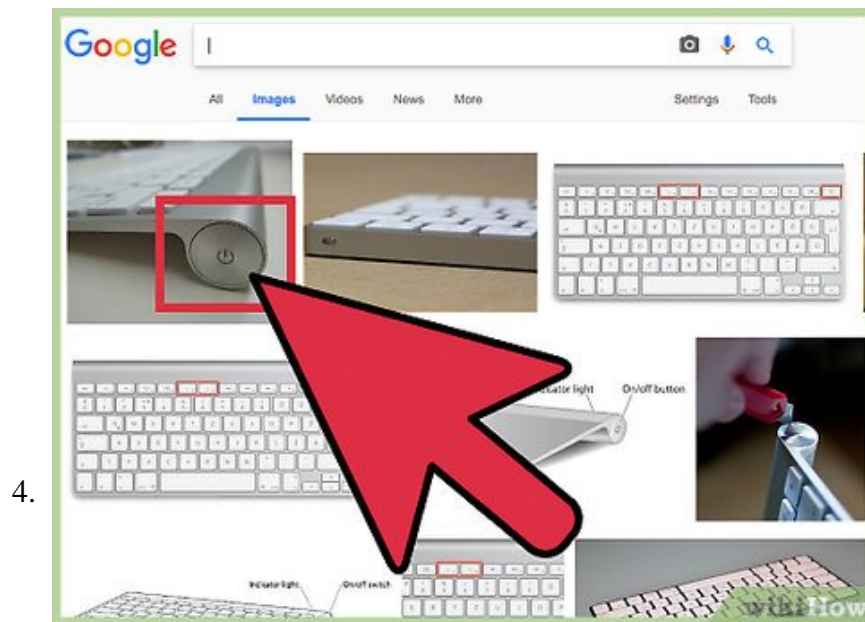
1. Click the Apple menu.
2. Click .
3. Click .
4. Make sure 'Show Bluetooth in menu bar' is checked.
5. If you see 'Bluetooth: On' beneath the blue Bluetooth symbol on the right, no change is necessary. Otherwise, click .



**Plug the Lightning end of the cable into the keyboard.** This is the smaller end of the Lightning-to-USB cable that came with your keyboard. The port is on the back edge of the keyboard near the center.<sup>[5]</sup>

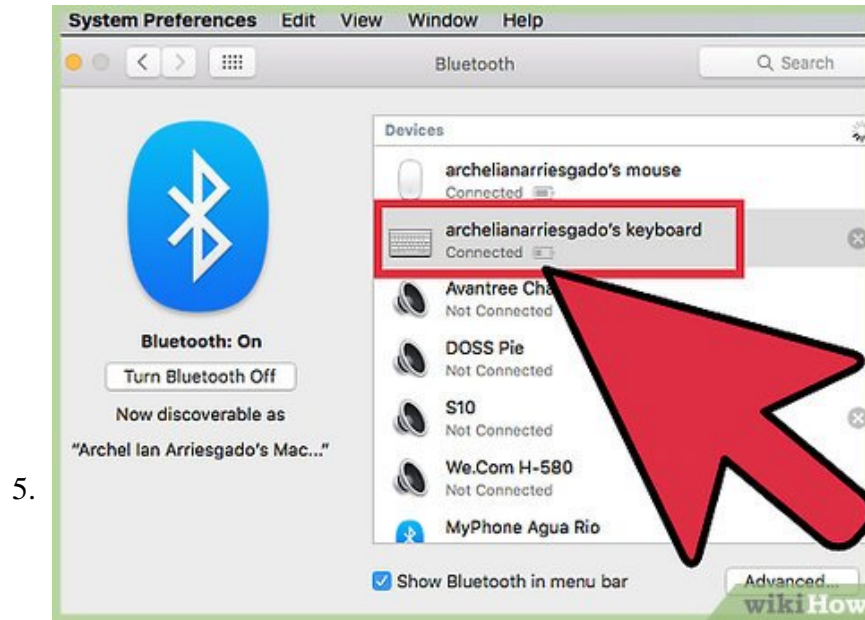


**Plug the USB end into the Mac.** You'll find the USB port on the front or side of your notebook, or the back of a monitor.<sup>[6]</sup>



**Press the power button on the keyboard.** It's on the back of the keyboard on the left side. The devices will pair.

1. A pop-up window will appear once the pair is successful.<sup>[7]</sup>



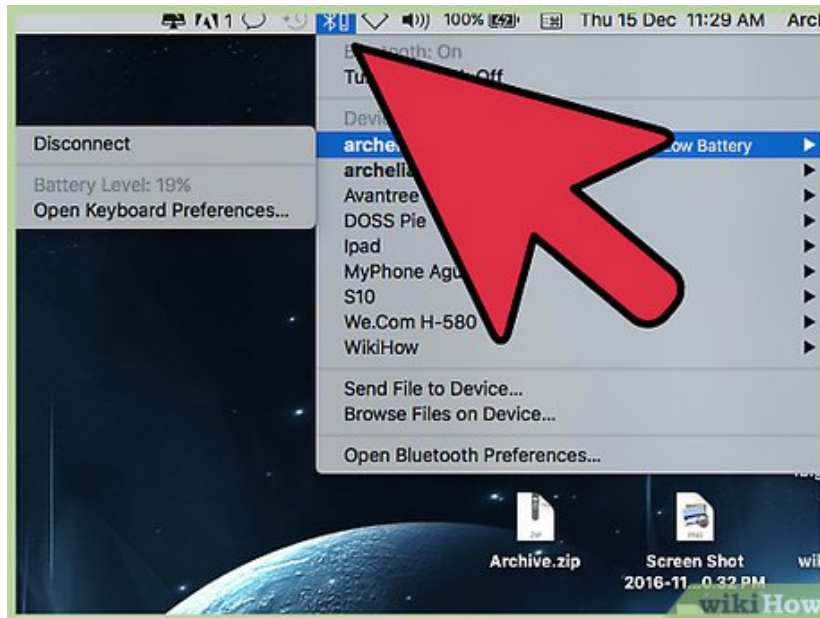
Click **Done**. The keyboard is now ready to use.



**Try some keyboard shortcuts.** macOS has many keyboard shortcuts to help you navigate the operating system:<sup>[8]</sup>

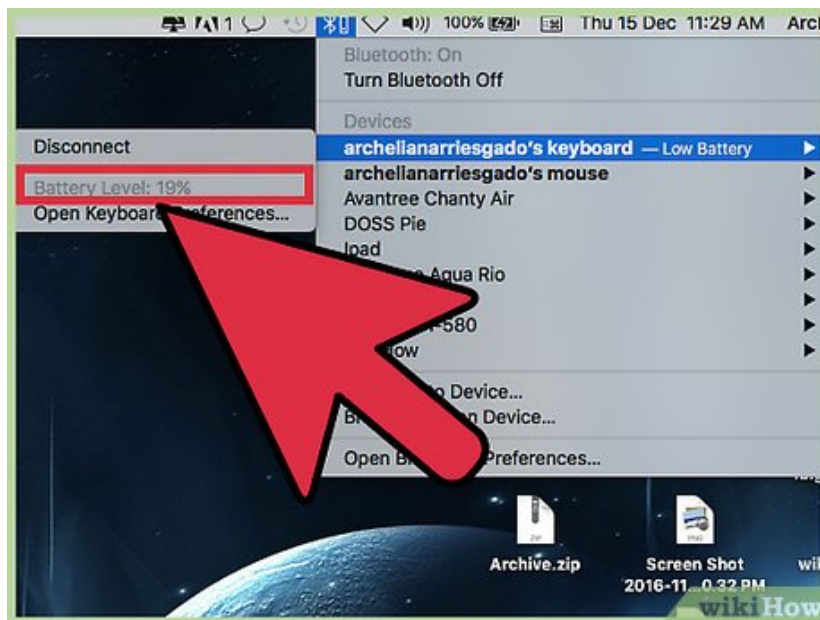
1. **Command + Q**: Quits an app.
2. **Command + T**: Opens a new tab in your web browser.
3. **Command + Tab**: Switches between apps.
4. **Command + Option + H**: Hides all open apps.
5. **Command + C**: Copies selected data.
6. **Command + V**: Pastes selected data.
7. **Command + spacebar**: Opens Spotlight.
8. See <https://support.apple.com/en-us/HT201236> for a list of all macOS keyboard shortcuts.

7.



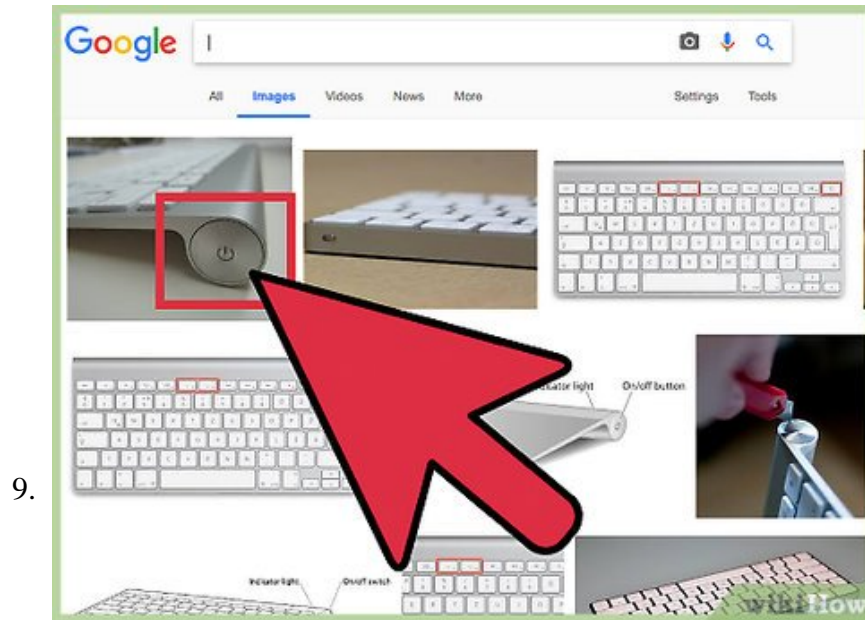
**Click the Bluetooth icon in the menu bar.** It's at the top right area of the screen and looks like a bowtie flipped on its side.

8.



**Hover the mouse over 'Magic Keyboard'.** Now you'll see the keyboard's current battery level. Leave the cable connected until the charge reaches 100%.

1. The battery should last about a month on a single charge.<sup>[9]</sup>



**Press and hold the keyboard power button.** This will turn off the Magic Keyboard.

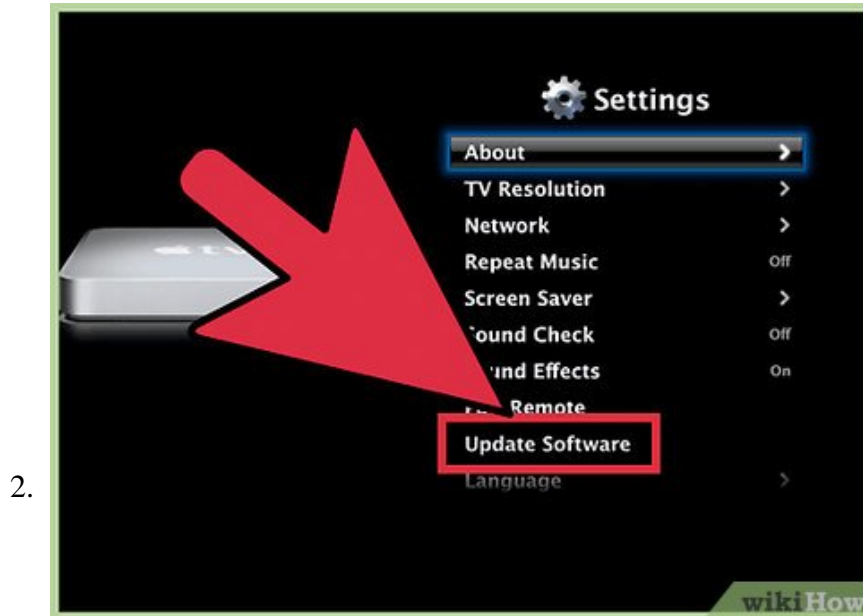
1. If you don't turn the keyboard off when you're not using it, it'll eventually go into low-power mode to preserve its battery charge.
2. Turning it back on will automatically pair it the Bluetooth-enabled iOS device.

Method 3 of 3:

## Using the Magic Keyboard with Apple TV

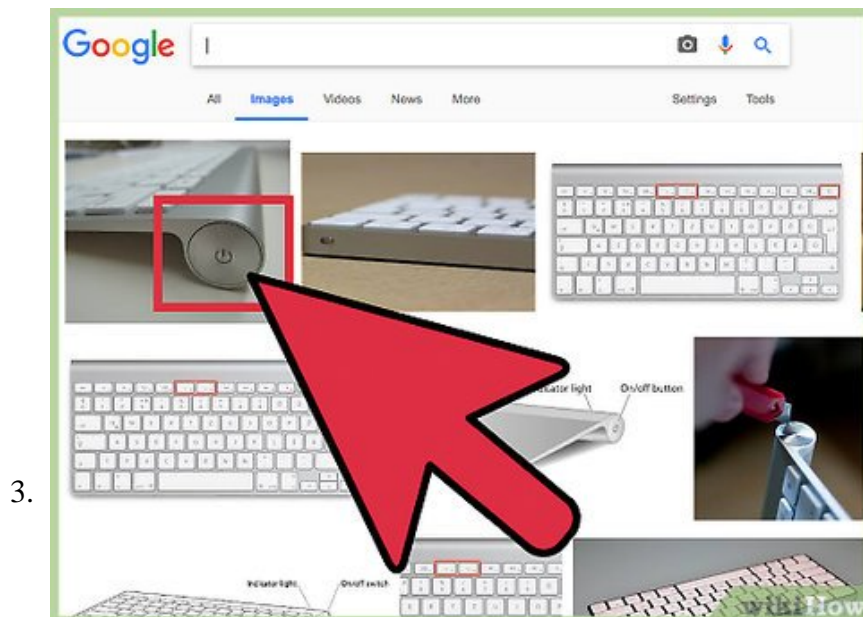


**Turn on your Apple TV.** If you have a 4th generation Apple TV, you can pair it with your Magic Keyboard to make it easier to find things to watch.



**Update to the latest version of tvOS.** To use a Magic Keyboard with Apple TV (4th generation), you'll need to have tvOS 9.2 or later. Follow these steps using your Apple TV remote:<sup>[10]</sup>

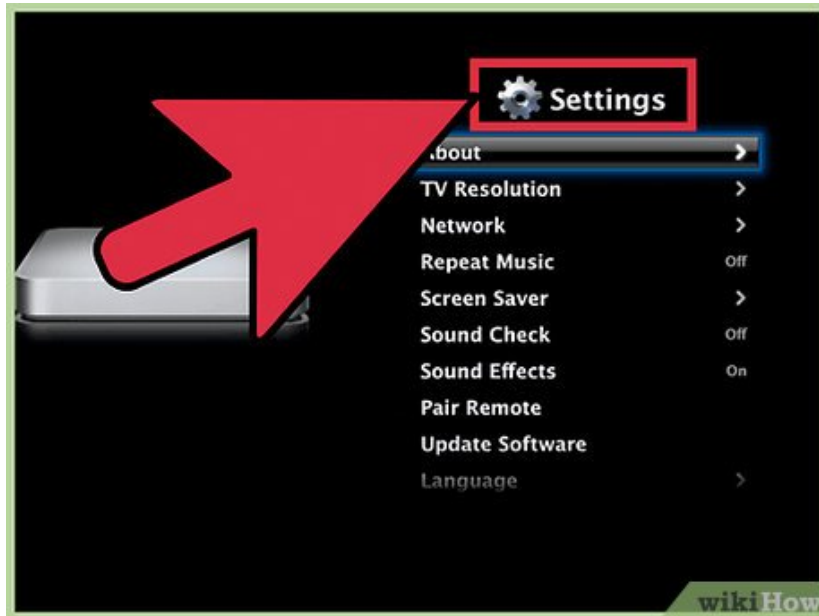
1. Open **Settings**
2. Select **System**
3. Select **Software Updates**
4. Select **Update Software**
5. If an update is available, select it to start the update. Otherwise, return to the home screen.



**Press the power button on the keyboard.** It's on the back on the left. When you press it, the green LED will illuminate.<sup>[11]</sup>

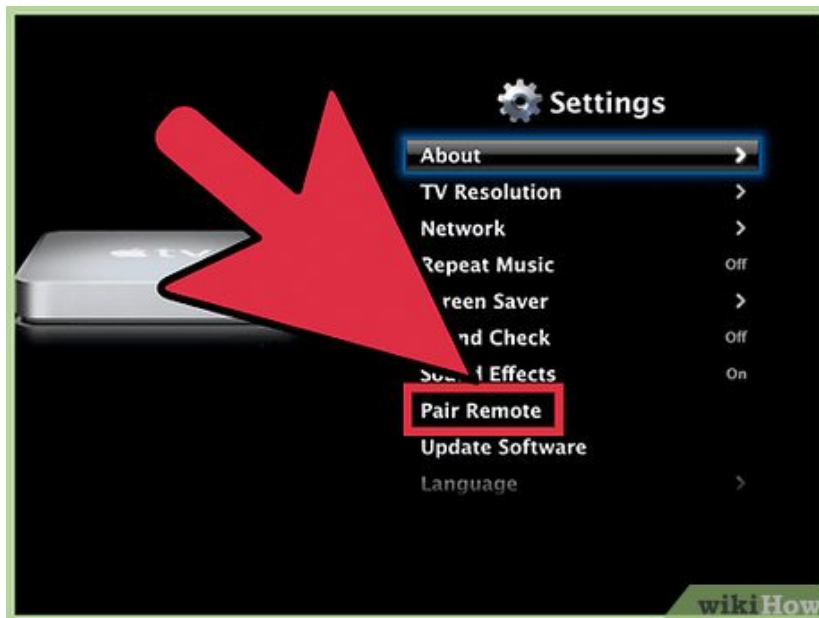
1. The Magic Keyboard has an internal battery that must be charged. If the keyboard doesn't turn on, use the Lightning-to-USB cable to charge it now.

4.



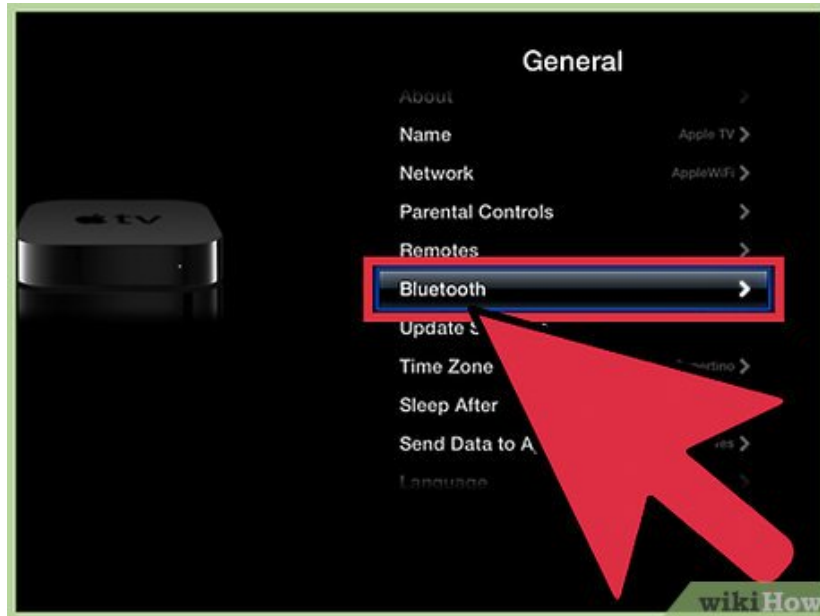
Open **Settings** on the Apple TV.

5.



Select **Remotes and Devices**.

6.



Select **Bluetooth**. The Apple TV will scan for available Bluetooth devices and list them in the results.

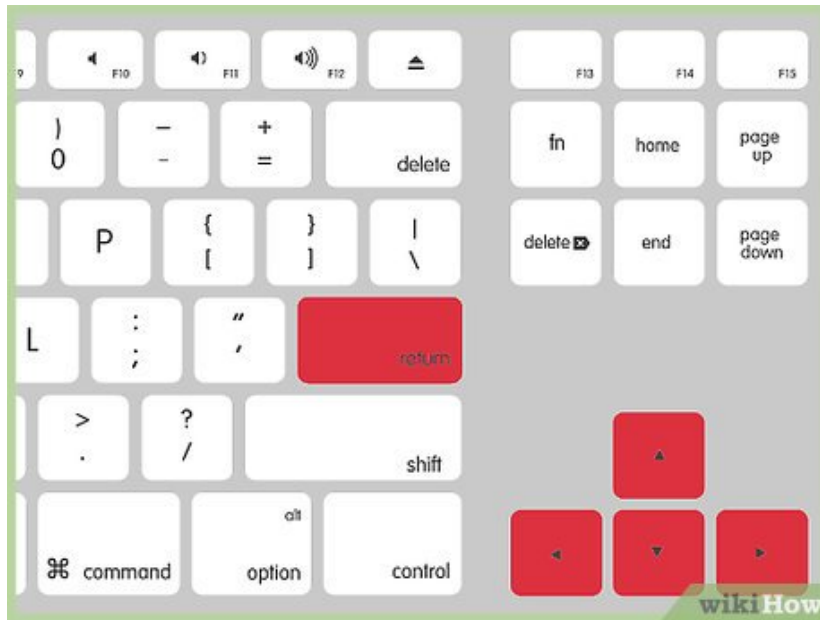
7.



**Select your keyboard from the results.** The Magic Keyboard should pair instantly.

1. You will also notice a battery gauge next to the keyboard. This shows how much charge is left in the keyboard. Be sure to charge the keyboard when this gauge is low.

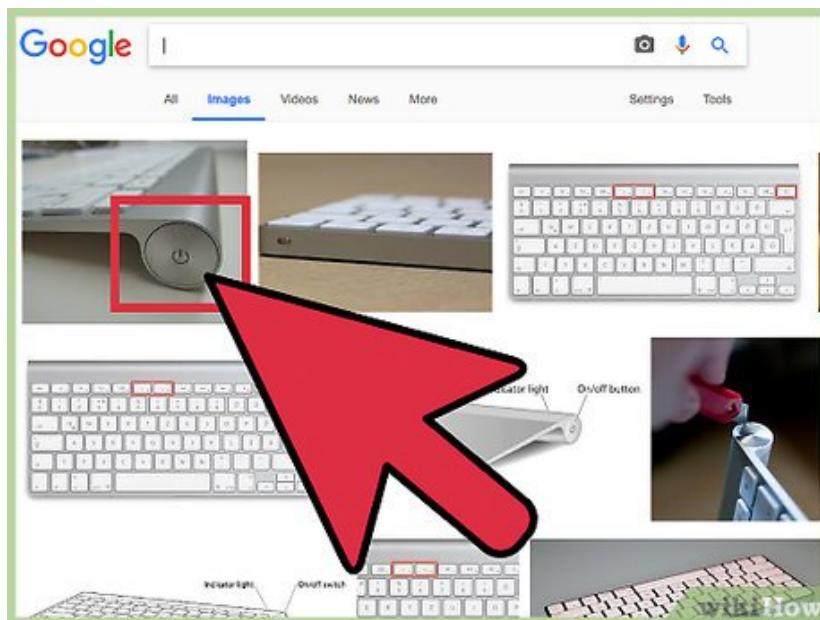
8.



**Use Apple TV keyboard shortcuts.** Now that your keyboard is all set up, you can use these keyboard commands while you watch or listen to content:[12]

1. **F3** : Switch between apps
2. **F4** : Go to the Home screen
3. **F7** : Rewind
4. **F9** : Fast forward
5. **F8** or spacebar: Pause/play
6. **F11** : Decrease volume
7. **F12** : Increase volume
8. Use **???** to navigate.
9. Press **?Return** to select.

9.



**Press and hold the keyboard power button.** This will turn off the Magic Keyboard.

1. If you don't turn the keyboard off when you're not using it, it'll eventually go into low-power mode to preserve its battery charge.

You finished reading the article "**How to Use the Apple Magic Keyboard**" edited by the [TipsMake](#) team. We hope this article has provided you with many useful tech tips and tricks. You can search for similar articles on tips and guides. Thank you for reading and for following us regularly.

---