

# How to use System Restore in Windows: Turn off, turn on, create, restore System Restore

System Restore is a Windows utility that allows users to restore the status of a window at a certain time. The time of recovery can be set by the computer or by the user. Software, data from the time of restore are deleted.

Perhaps many of you do not understand what System Restore is, what it is used for in the computer. System Restore is a Windows utility that allows users to restore the status of a window at a certain time. The time of recovery can be set by the computer or by the user. Software, data from the time of restore are deleted. If after the recovery process you find that the computer is getting worse, you can still return to the time before recovering.

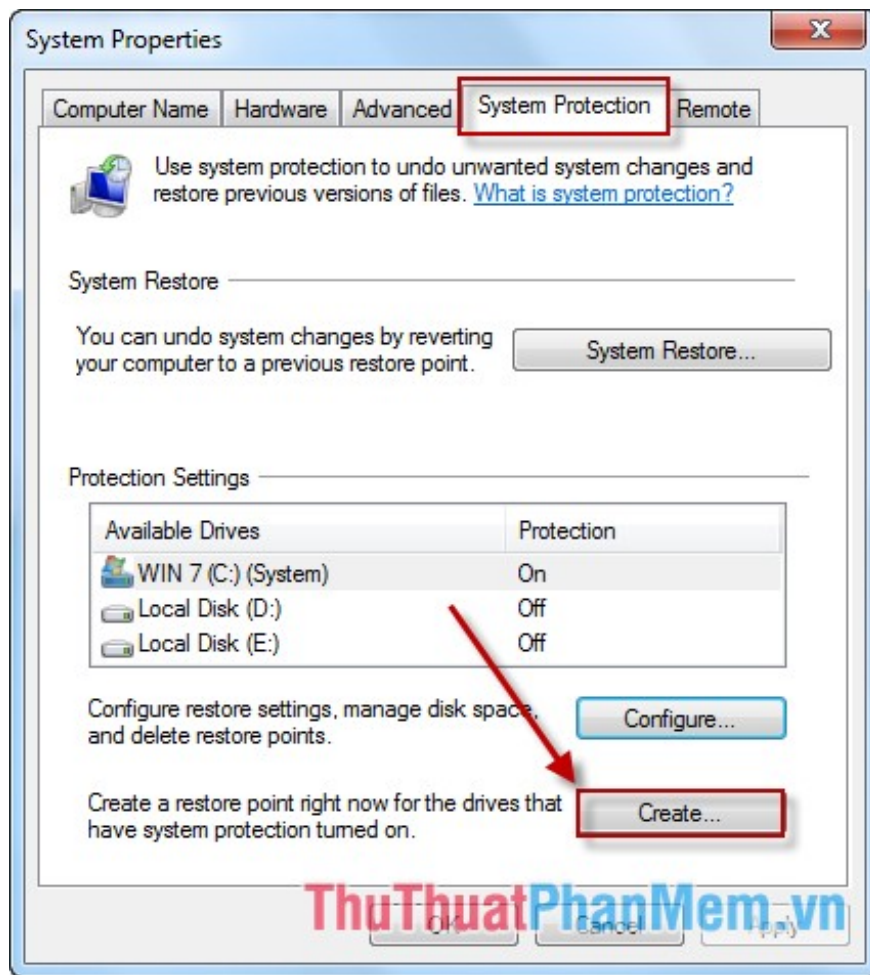
Typically, the computer creates a Restore time between 1 and 3 weeks. But for your safety, you should create the Restore point yourself.

## 1. Create a Restore Point moment

**Step 1:** Right-click **My Computer** -> **Properties** -> dialog box appears and select **System protection** .

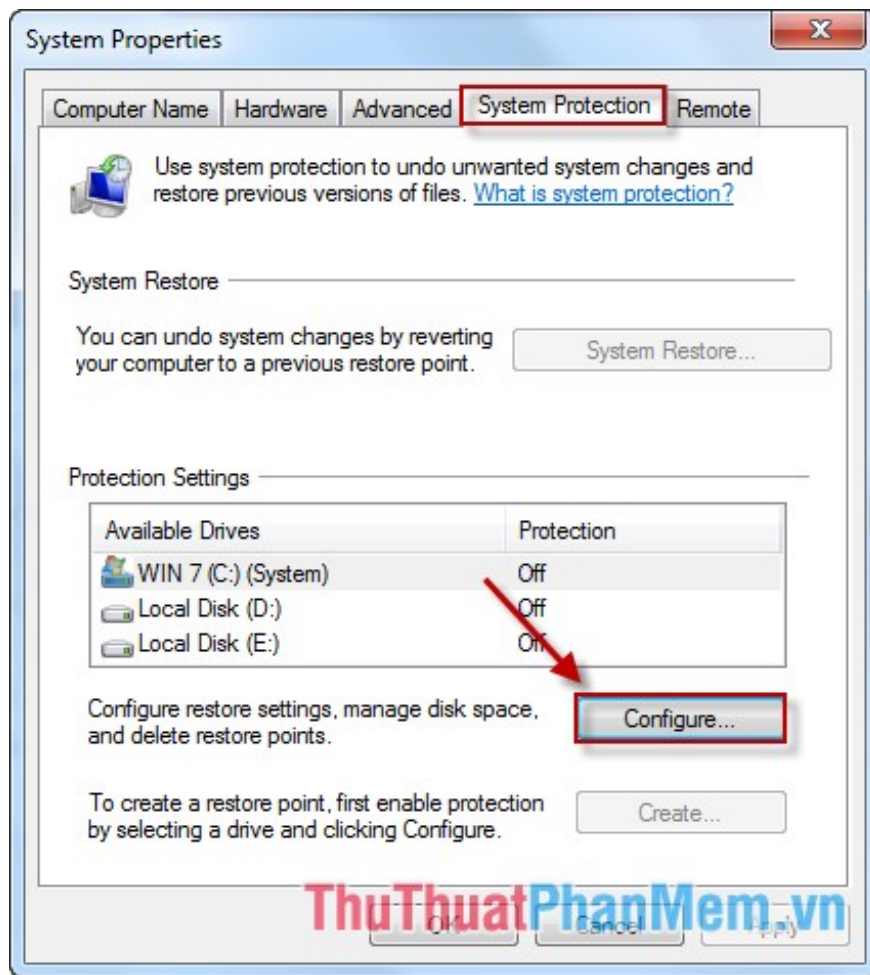


**Step 2:** A dialog box appears, select the tab **System protection** -> **Creat** .

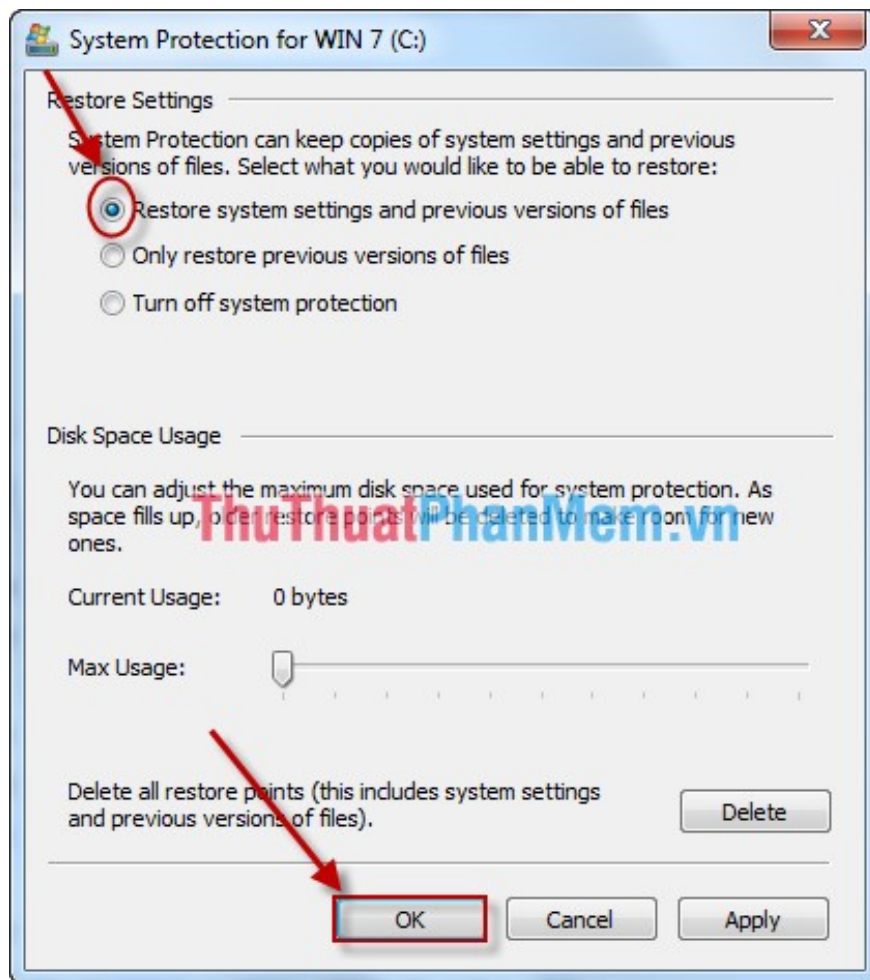


In case your computer has hidden **Creat** button, you can do as follows:

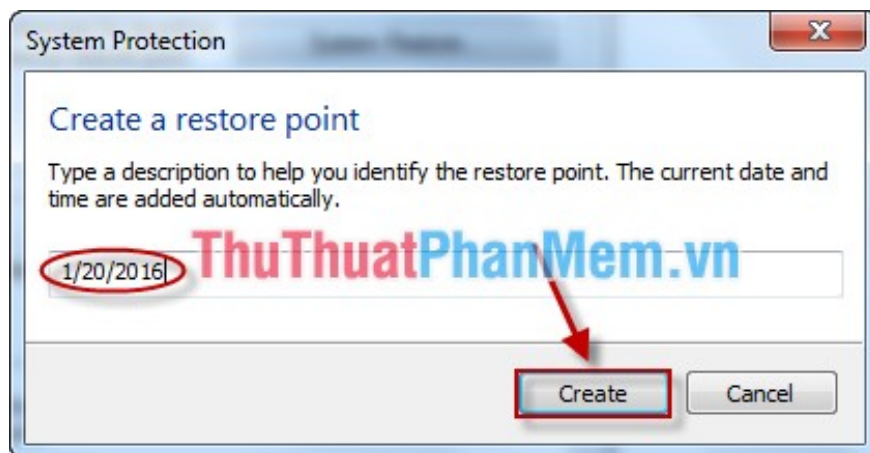
- Click **Configuration** .



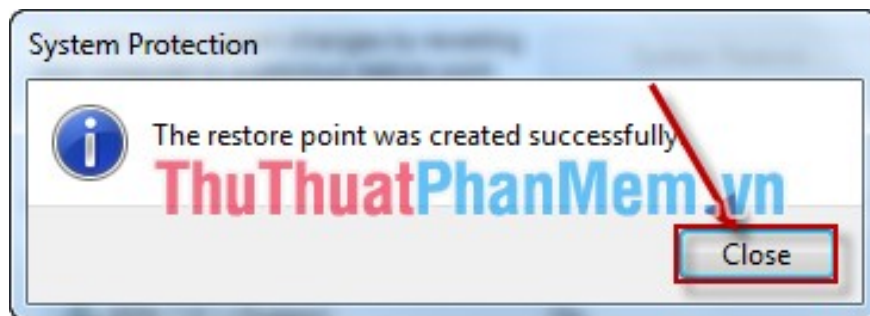
- A dialog box appears selecting *Restore System Setting and previous version of file* -> **OK** .



**Step 3:** Enter the time to restore -> **Creat** . Note the date format you see on your computer, enter the format accordingly.



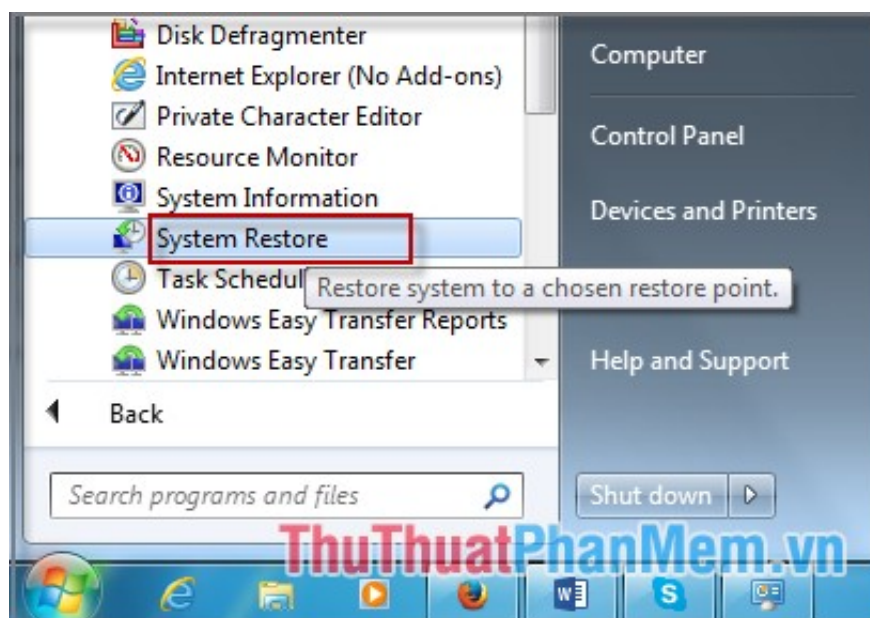
**Step 4:** The process of creating a successful notification time choose **Close** .



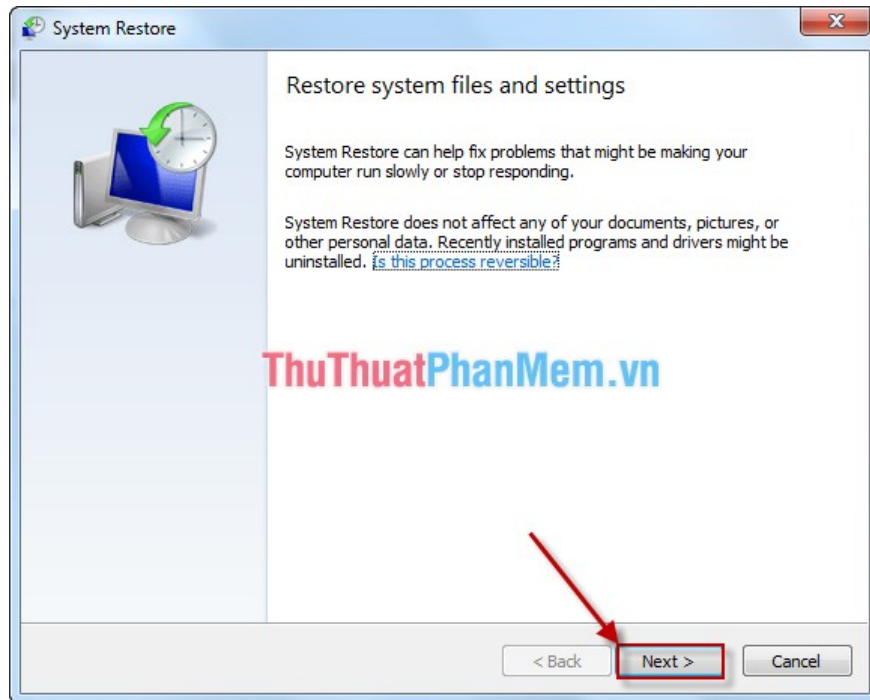
## 2. Use System Restore

To start the Restore process follow these steps:

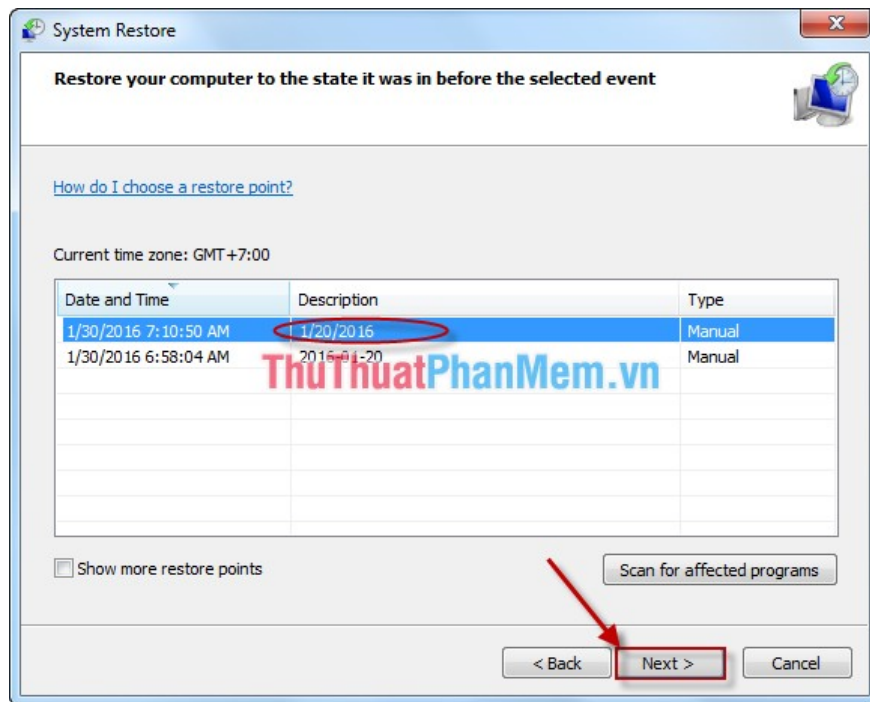
**Step 1:** Go to **Start -> All Programs -> Accessories -> System Tools -> System Restore .**



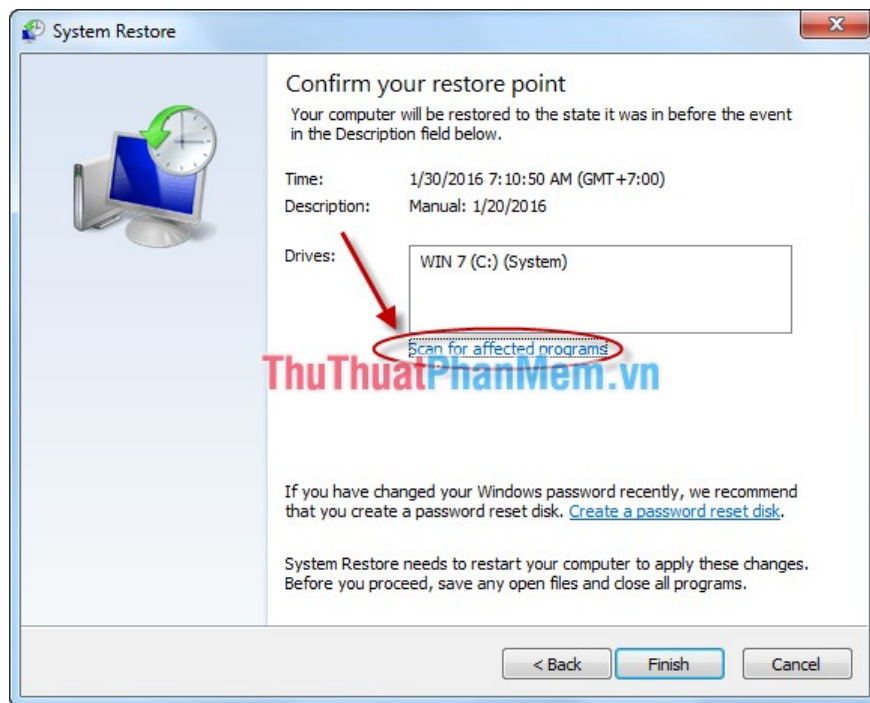
**Step 2:** Click **Next** to continue.



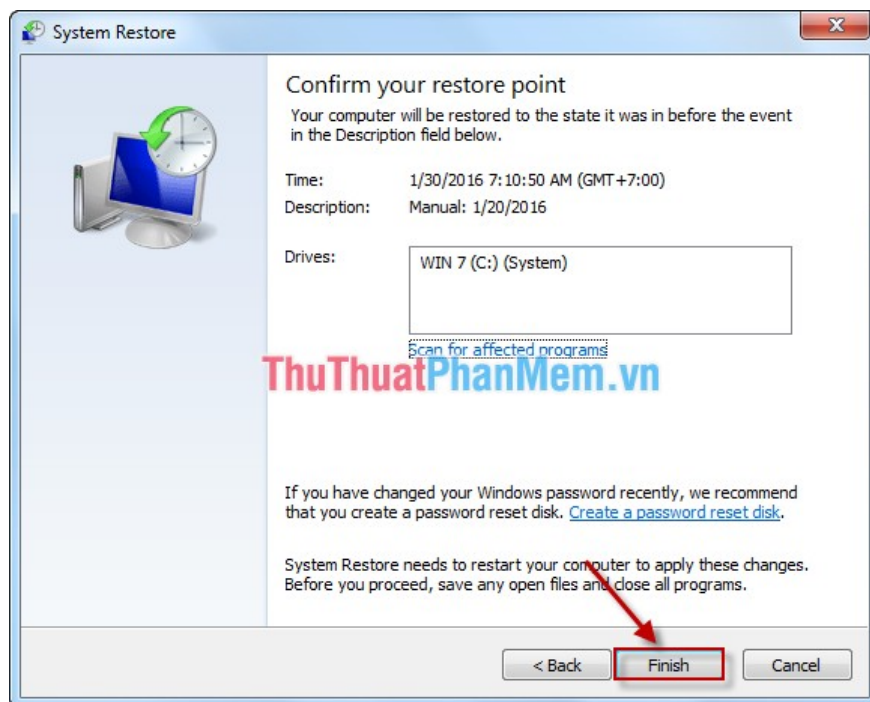
**Step 3:** A dialog box appears -> choose a time to restore -> **Next** .



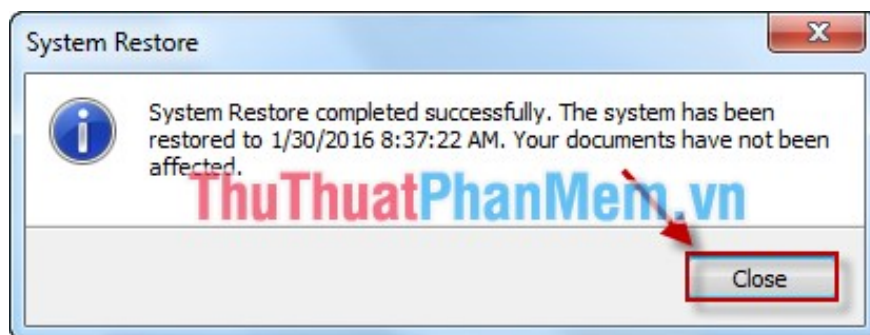
**Step 4:** To be safe, you should check the programs and data files to be restored. Click *Scan for affected programs* .



**Step 5:** Finally, click **Finish** to complete.



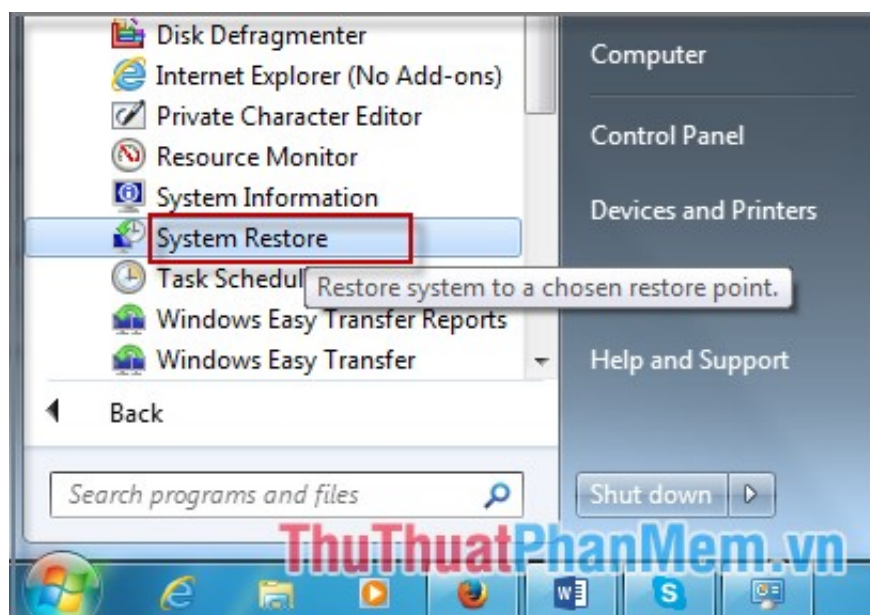
**Step 6:** After the restore process is complete, click **Close**.



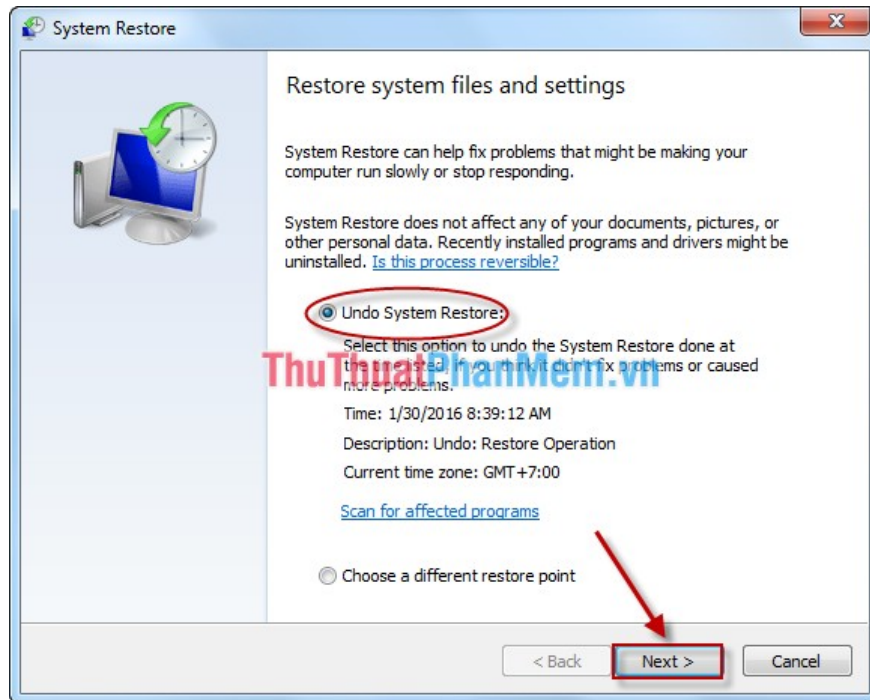
### 3. Return to the Restore process

In case you restore but the system is worse than before, you can choose to go back to the Restore process. Or in case you lose important data file, you can follow these steps:

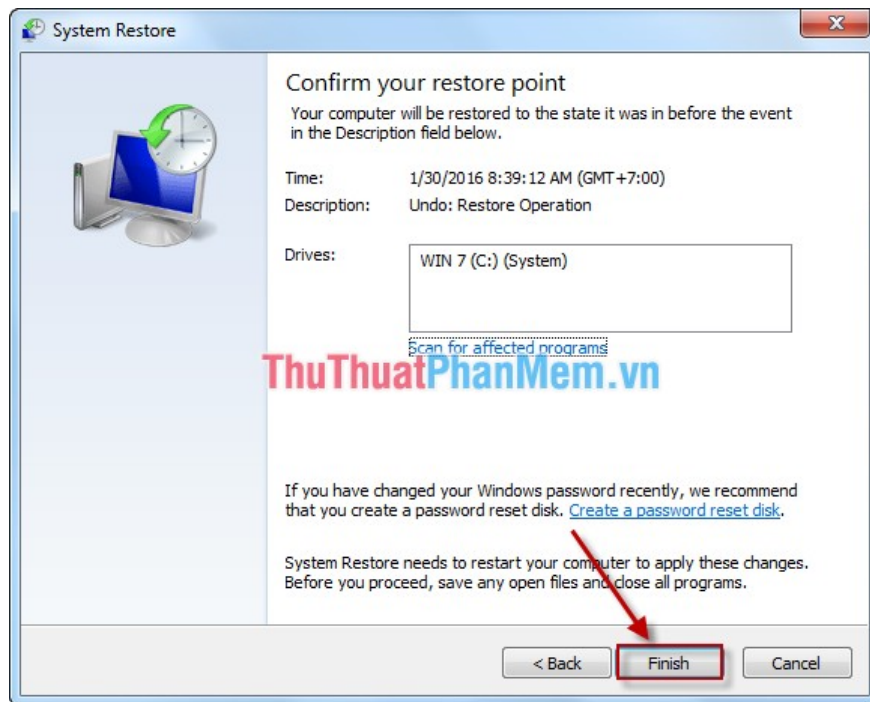
**Step 1:** Go to **Start -> All Programs -> Accessories -> System Tools -> System Restore** .



**Step 2:** The dialog box appears with two options for **Undo System Restore** or you can choose *Choose a different restore point* (choose at another time).



**Step 3:** Click **Finish** to begin the recovery process.



Good luck!

You finished reading the article "**How to use System Restore in Windows: Turn off, turn on, create, restore System Restore**" edited by the [TipsMake](#) team. We hope this article has provided you with many useful tech tips and tricks. You can search for similar articles on tips and guides. Thank you for reading and for following us regularly.

---

