

# How to use SpeedFan to check CPU temperature, fan speed, computer

SpeedFan tool monitors your CPU temperature, efficiency, and fan speed to help you cool down your computer.

One of the reasons for slow computer, lag is the hot computer condition, affecting the CPU or computer lifespan. There are many computer system testing tools to optimize the computer such as SpeedFan for example. SpeedFan is a tool to control computer fan speed, check the temperature of the CPU, mainboard and computer hard drive so that users have ways to cool down the computer if the temperature is high. From the statistics that SpeedFan statistics, users will know the current computer status, give warnings if it detects an abnormal condition. The following article will guide you how to use the SpeedFan tool.

## Instructions due to the computer fan performance on SpeedFan

### Step 1:

We download the SpeedFan software by following the link below and install it as usual.

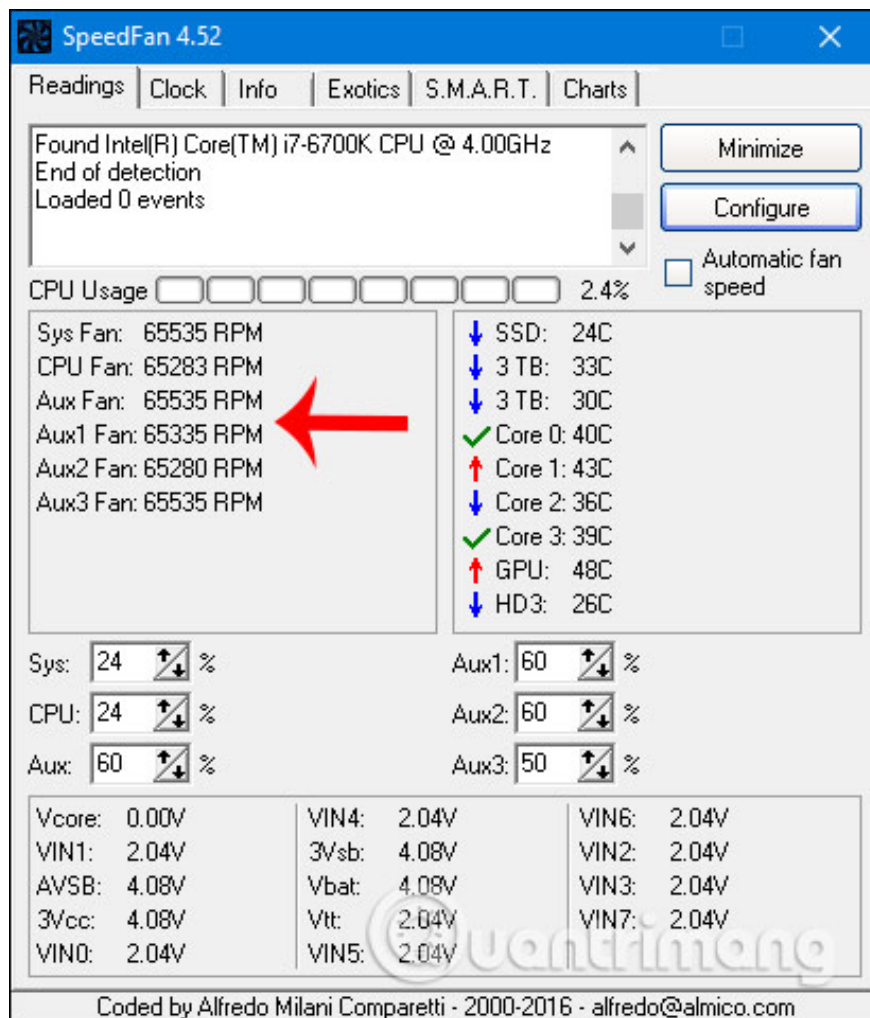
1. Download the SpeedFan Windows tool

Launch the tool and the user will see **the CPU temperature through 2 cores**, Core 0, Core 1. Each CPU core has its own thermometer but will have the same reading as shown. If there is a flame symbol, the temperature is hot. When we check **Automatic fan speed** , this tool automatically adjusts the speed of the computer fan based on the temperature of the CPU, HDD.

1. How much CPU temperature is overheating?

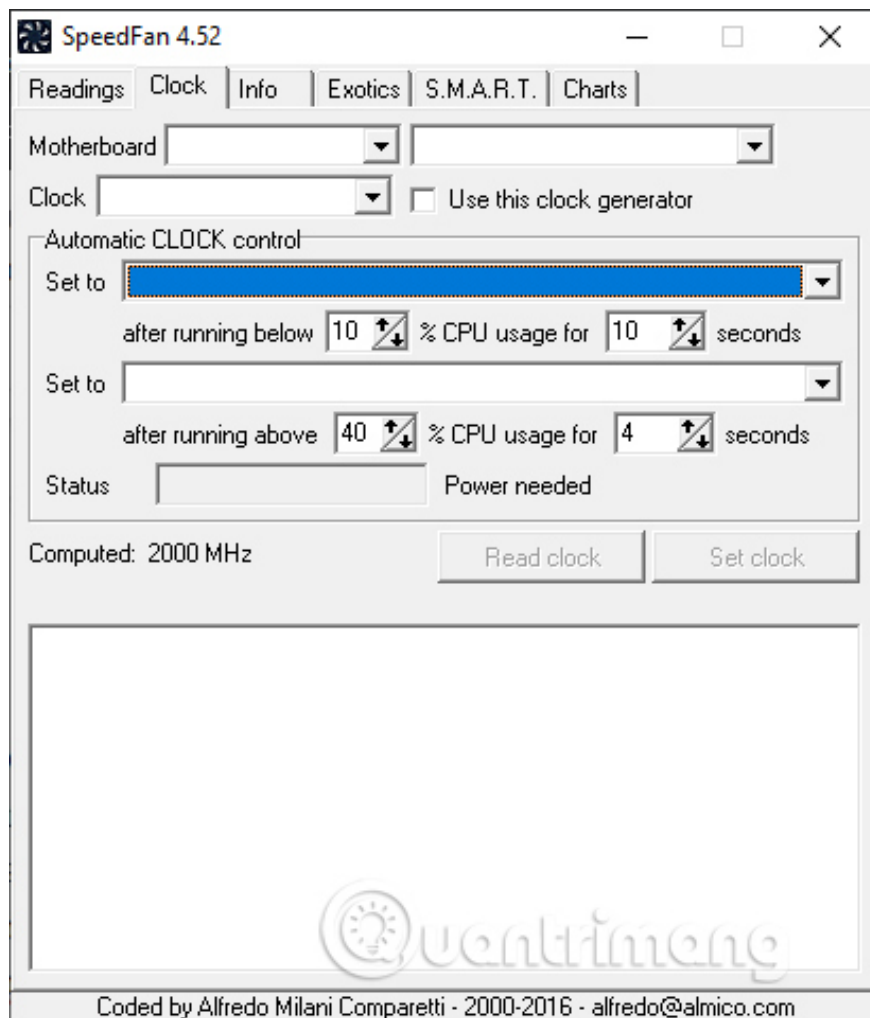


**Note** , some machines when using SpeedFan will display fan speed, some machines are not available because your computer does not support adjustment, software does not support. If the computer is supported, it displays the fan speed as below.



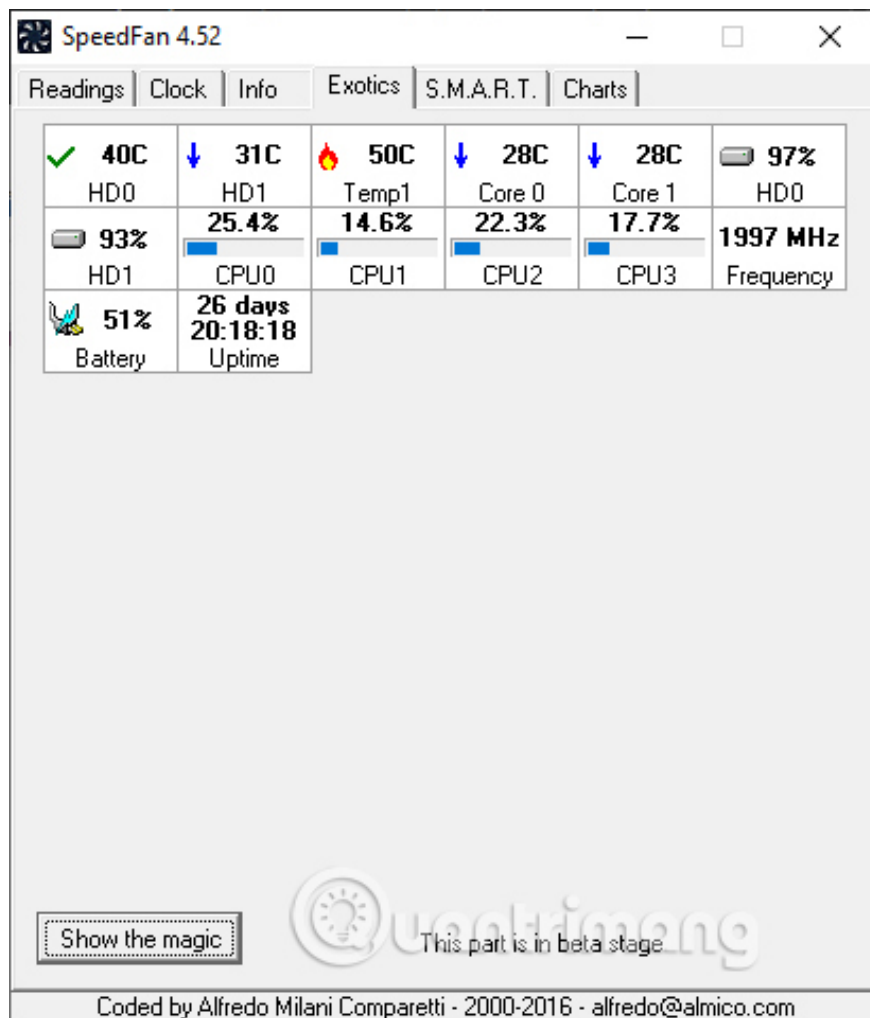
## Step 2:

Click on the **Clock tab** to edit the computer bus (FSB), but users should pay attention if not technically competent, changing the wrong FSB can cause the computer to slow down. Motherboard will select the motherboard name, Clock select Clock Generator is what in the display list.



### Step 3:

**The Info tab** provides the name of the chipset you are using as well as the RAM bar specifications when clicking Read Info. **The Exotics tab** provides more information on CPU temperatures to automatically adjust the cooling fan speed accordingly for the CPU temperature.



**Step 4:**

**The SMART tab is used to view hard drive information.**

SpeedFan 4.52

Readings | Clock | Info | Exotics | S.M.A.R.T. | Charts

Hard disk: HD1 - 500.1GB - ST500LT012-1DG142

Model: ST500LT012-1DG142      Firmware: 0001SDM1

Perform an in-depth online analysis of this hard disk ?

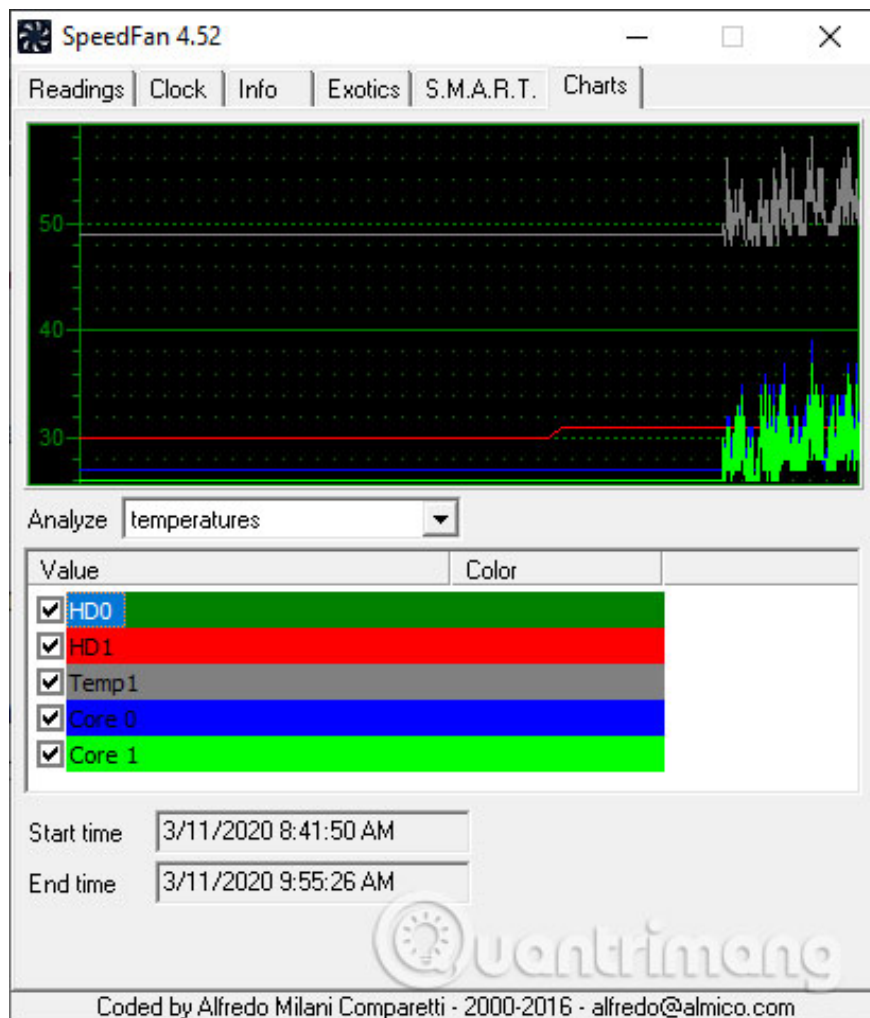
Extended test | Short test | Status: no error

| Attribute                    | Value | Worst | Warn | Raw          |
|------------------------------|-------|-------|------|--------------|
| Raw Read Error Rate          | 118   | 99    | 6    | 00000B813298 |
| Spin Up Time                 | 99    | 99    | 0    | 000000000000 |
| Start/Stop Count             | 92    | 92    | 20   | 0000000020CE |
| Reallocated Sector Count     | 100   | 100   | 36   | 000000000000 |
| Seek Error Rate              | 84    | 60    | 30   | 00000E325FF4 |
| Power On Hours Count         | 90    | 90    | 0    | 19AC0000238A |
| Spin Retry Count             | 100   | 100   | 97   | 000000000000 |
| Power Cycle Count            | 98    | 98    | 20   | 000000000873 |
| End-to-End error             | 100   | 100   | 99   | 000000000000 |
| Reported Uncorrectable Er... | 100   | 100   | 0    | 000000000000 |
| Command Timeout              | 100   | 100   | 0    | 000000000000 |
| High Fly Writes              | 100   | 100   | 0    | 000000000000 |
| Airflow Temperature          | 69    | 56    | 45   | 00001F19001F |
| GSense Error Rate            | 100   | 100   | 0    | 000000000219 |
| Power Off Retract Count      | 100   | 100   | 0    | 000000000000 |

Fitness: [Progress Bar]      Performance: [Progress Bar]

Coded by Alfredo Milani Comparetti - 2000-2016 - alfredo@almico.com

Finally, the **Chart tab** shows the temperature of different areas of the computer through the graph.



You finished reading the article "**How to use SpeedFan to check CPU temperature, fan speed, computer**" edited by the [TipsMake](#) team. We hope this article has provided you with many useful tech tips and tricks. You can search for similar articles on tips and guides. Thank you for reading and for following us regularly.