

How to use SpeedFan to check and adjust CPU fan speed

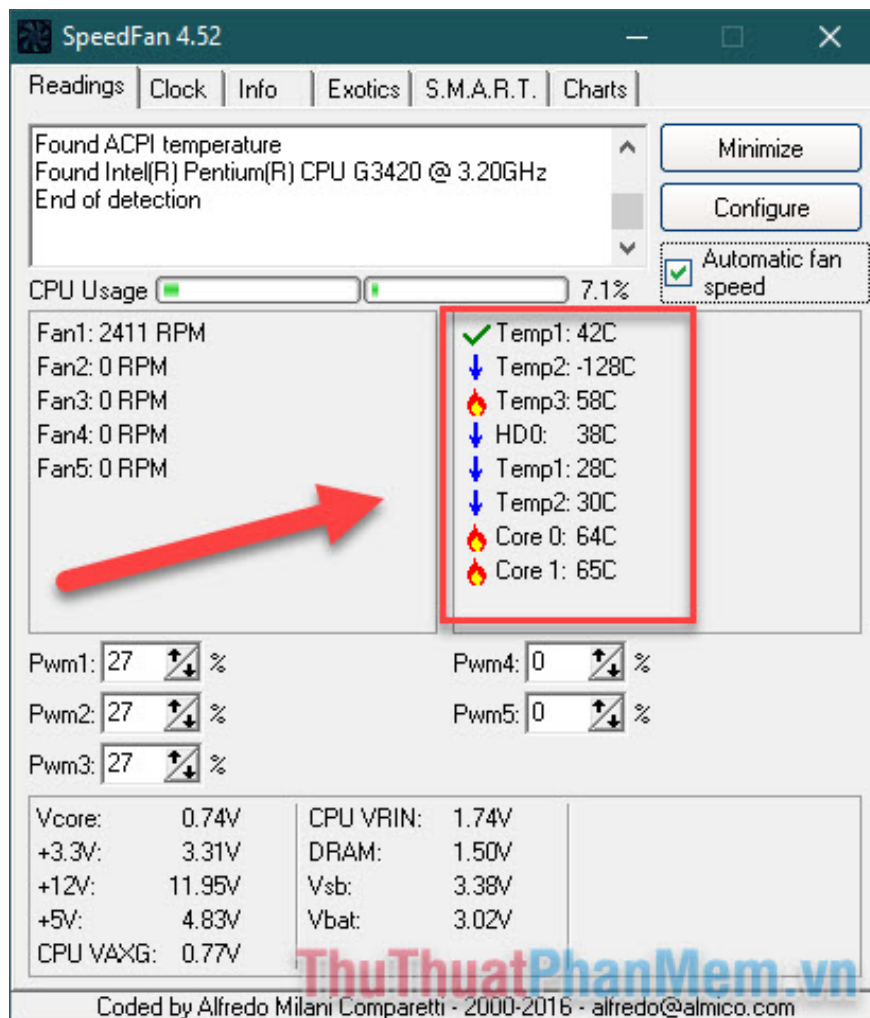
SpeedFan is a tool that tracks the common computer hardware today, helping you get an accurate and timely computer rescue plan. At the same time, if you see the cooling fan loudly, you also need to know how to adjust the fan speed so that the sound emitted becomes quieter.

Improper cooling of the cooling fan is an eternal problem that causes the CPU temperature to rise. If you find that your computer is freezing, automatically shutting down . then the CPU is probably overheating and the first thing you need to check is the cooling fan. SpeedFan is a tool to track the common computer hardware today, helping you get the "rescue" computer accurately and timely. At the same time, if you see the cooling fan loudly, you also need to know how to adjust the fan speed so that the sound emitted becomes quieter.

Use SpeedFan to check and adjust CPU fan speed

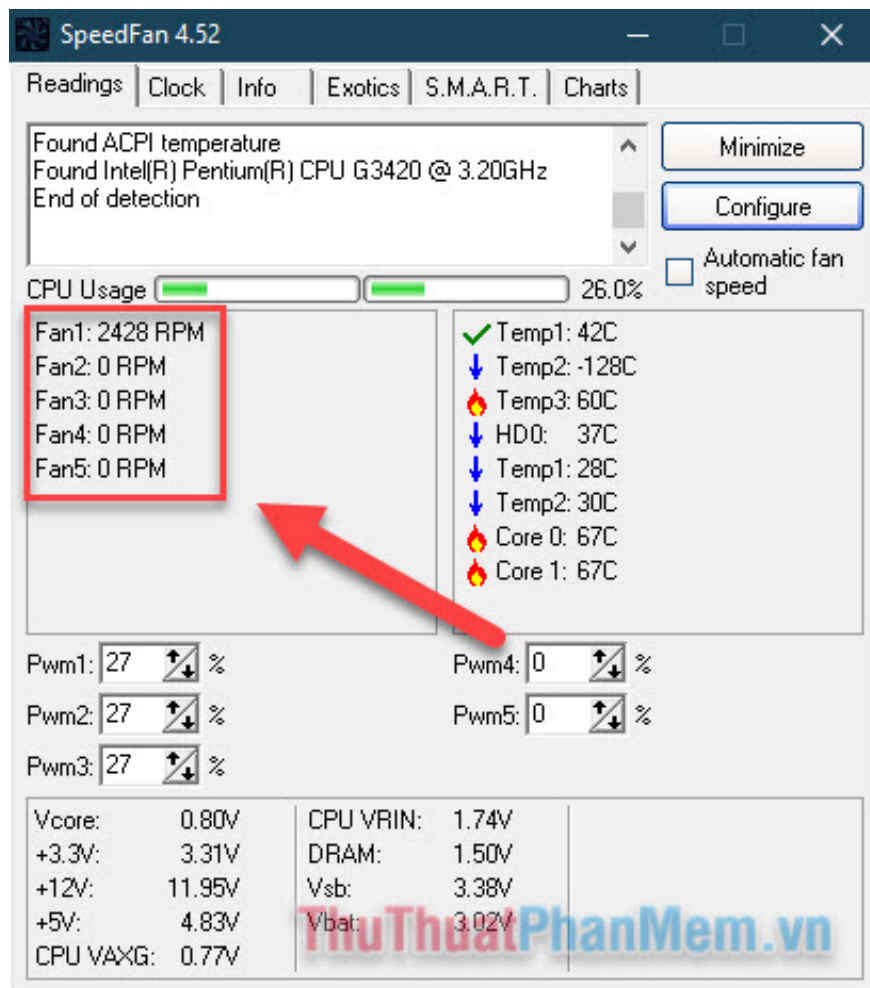
Step 1: The first thing you need to do is open the case and check the connectors, dusting to make sure the connection between the computer hardware is stable. After making sure everything, we will come to the next step.

Step 2: Open SpeedFan, now at the main interface you will see the temperature parameters of different hardware such as CPU, GPU and hard drive.

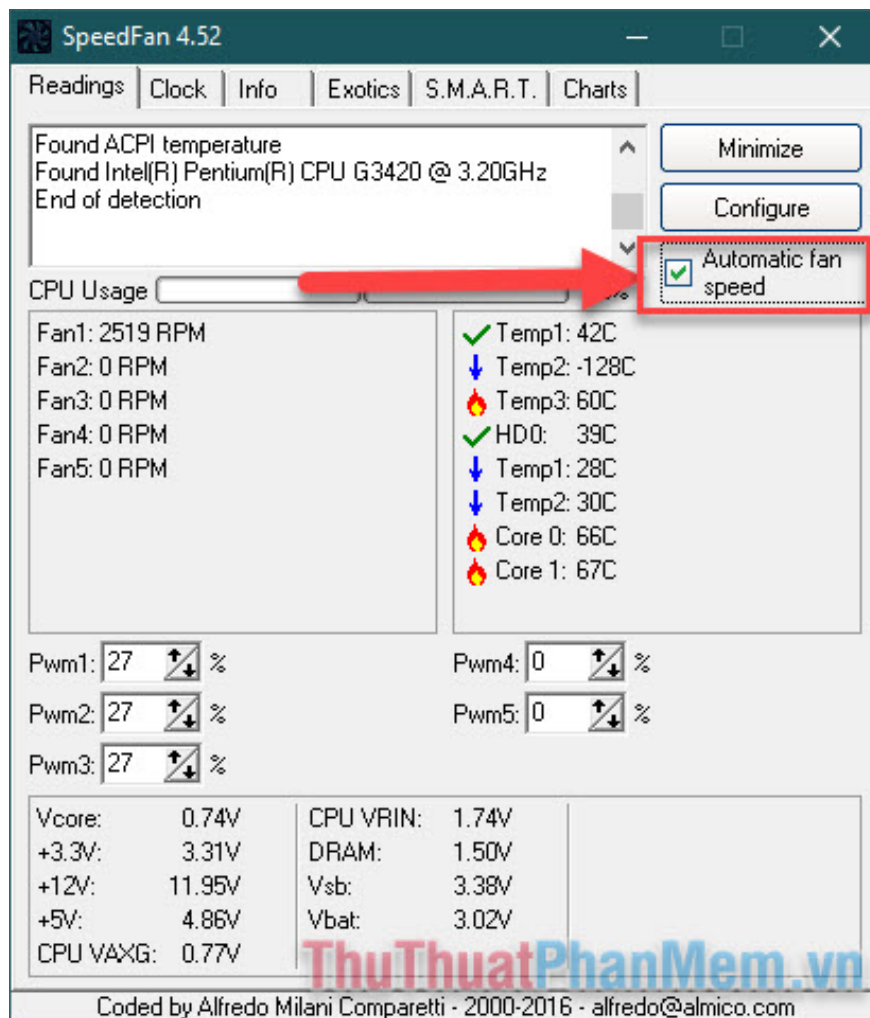


You will easily see the temperature of the CPU through the core (core). If it appears next to the fire symbol equivalent to a temperature above 60 degrees C means the CPU is quite hot. This is an acceptable level when you are using a computer to work. If the temperature is up to 80-90 degrees, you should check the thermal paste as well as see if the fan has a problem. To learn more, Thuthuatphanmem.vn invites you to refer to the article: How much CPU temperature is normal.

Step 3: You pay attention to the **fan speed** display frame on the left, because I have a fan, so I only need to care about Fan 1, which is approximately **2500 RPM** .

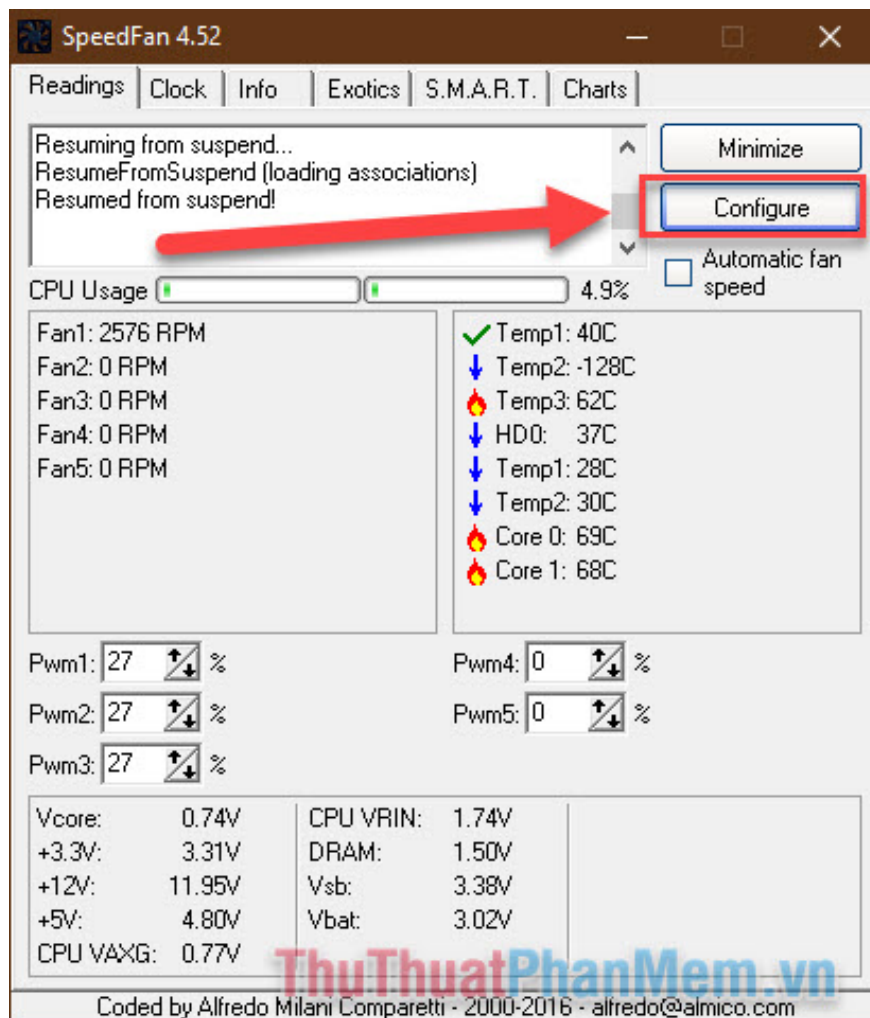


In a normal way, you only need to check the **Automatic fan speed** box , the software will automatically adjust the fan speed to suit the CPU temperature.

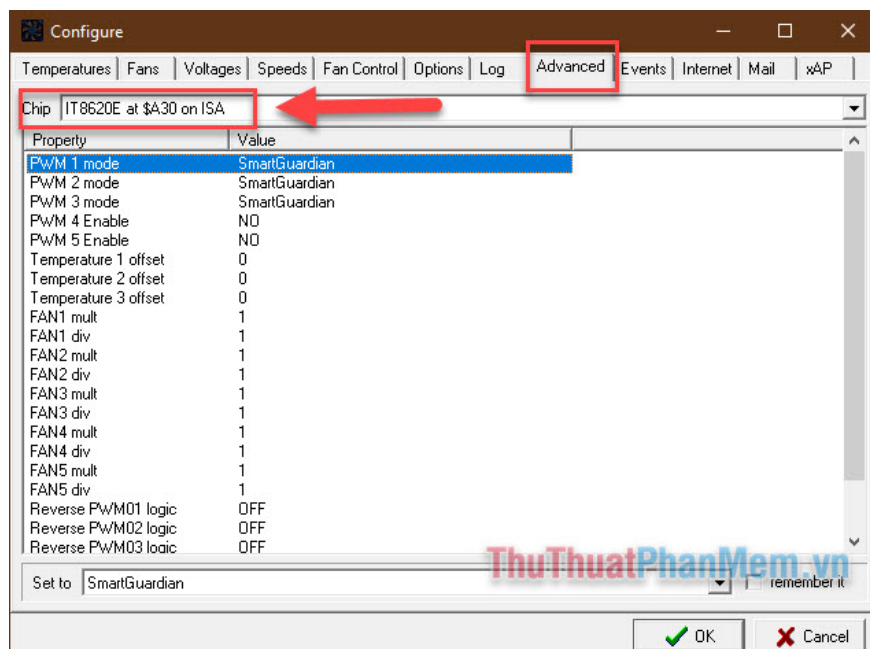


Alternatively, you can manually adjust the fan speed to your liking by following the steps below.

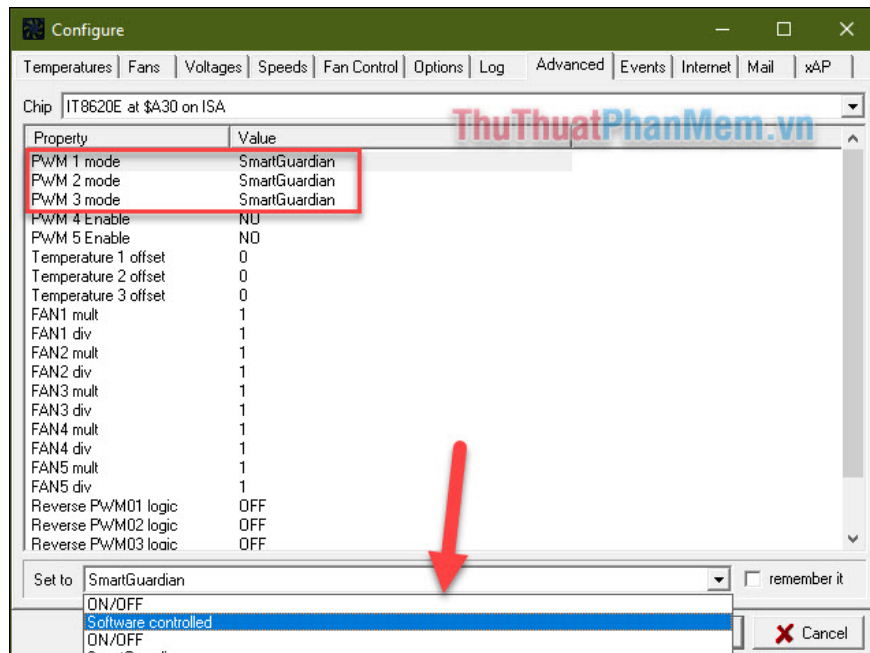
Step 4: Click **Configure** .



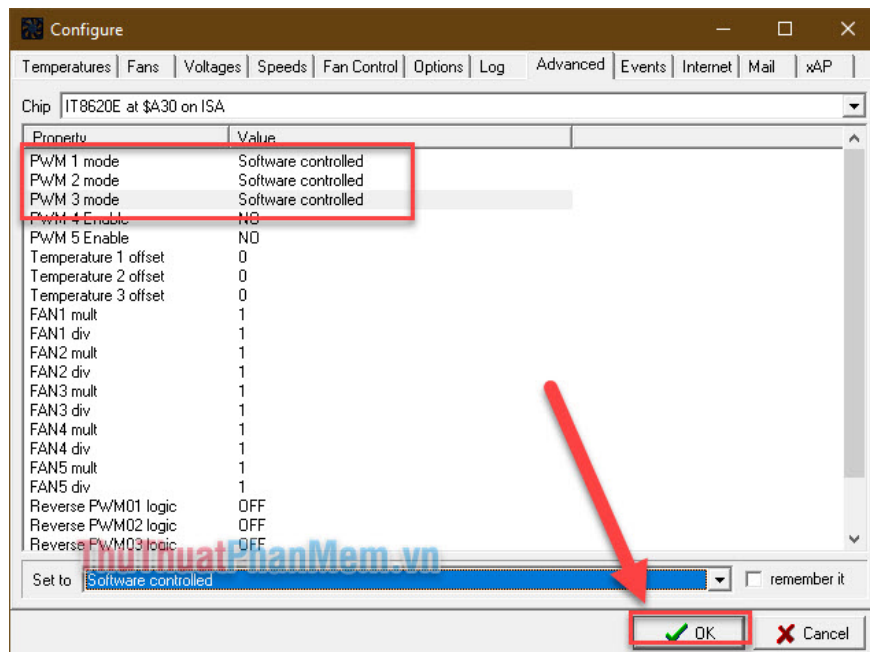
Switch to the **Advanced** tab , in the Chip section you select the line starting with "IT ." (the number will vary depending on your machine configuration).



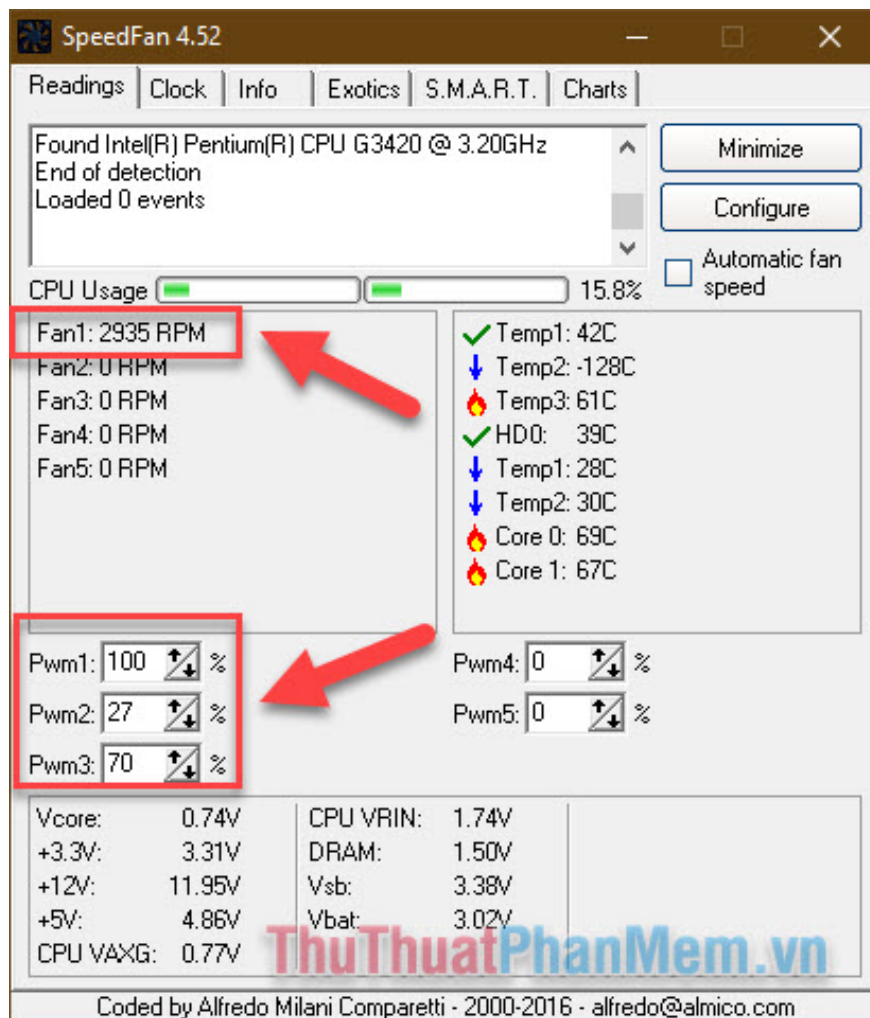
Step 5: Pay attention to the **PWM parameters 1, 2 and 3** . For each parameter you change to **Software controlled mode** .



When all 3 have been changed click **OK** .



Step 6 : Return to the main screen, you proceed to increase or decrease the number of items **PWM 1, 2 and 3** in accordance with demand. The more the number increases, the higher the fan productivity will be, and often will cause the fan to make more noise. Here when I increased the parameters, my fan ran at approximately **3000 RPM** .



Thus, Thuthuaphanmem.vn has just taught you how to use SpeedFan to check and adjust fan speed. Wishing you a successful practice!

You finished reading the article "**How to use SpeedFan to check and adjust CPU fan speed**" edited by the [TipsMake](#) team. We hope this article has provided you with many useful tech tips and tricks. You can search for similar articles on tips and guides. Thank you for reading and for following us regularly.