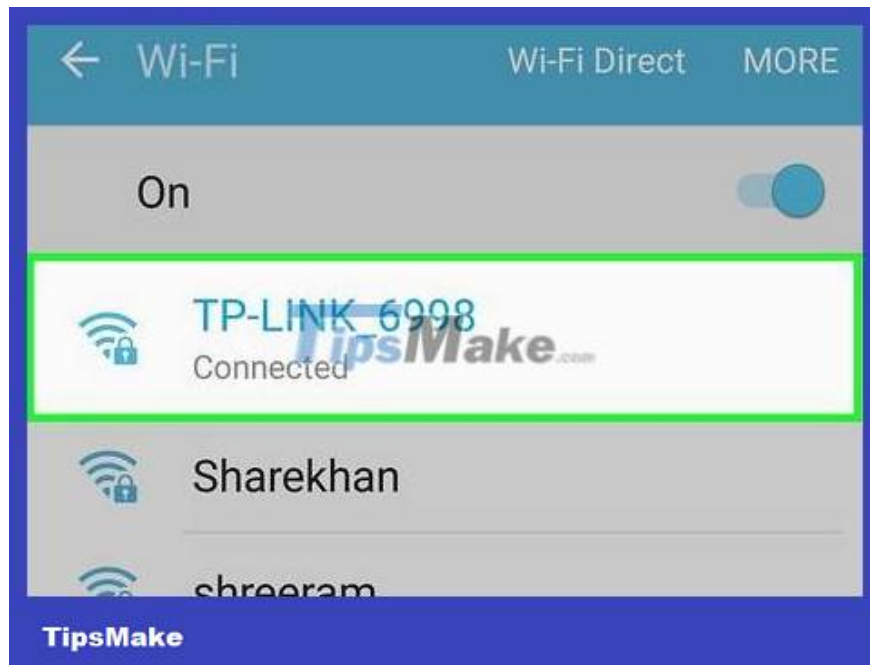


How to Use Smart View on Android

This wikiHow teaches you how to use Samsung's Smart View app on your Android phone or tablet to stream media to your Samsung Smart TV as well as control your TV from your phone.

Set up the Smart View feature



Connect your Samsung Smart TV to the same wifi network as your Android phone. This ensures the two devices can connect to each other.



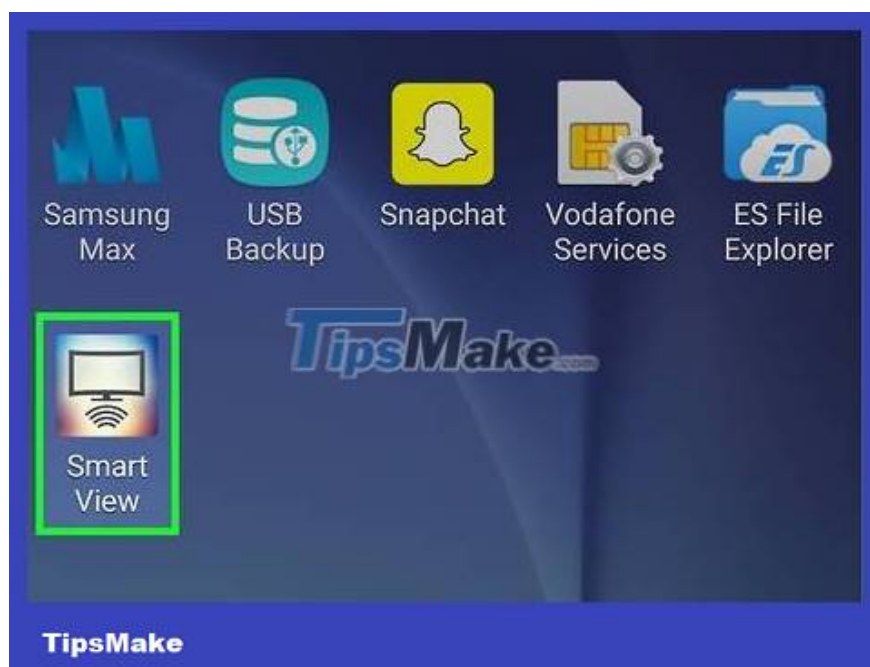
Install the Smart View application on your phone. Do the following:

Open **Play Store** .

Type `samsung smart view` in the search bar.

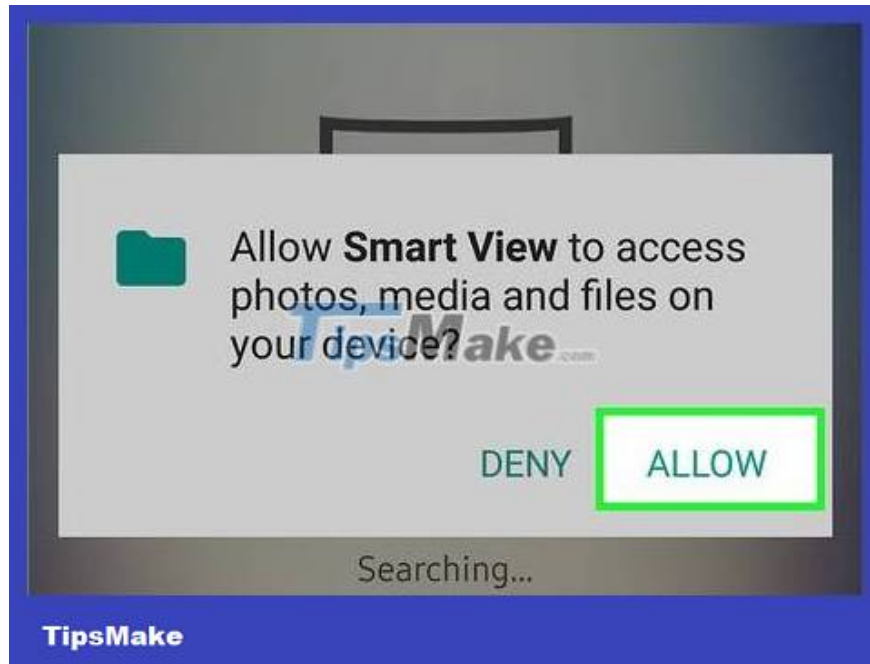
Tap the **Samsung Smart View** app .

Click **INSTALL** .



Open Samsung Smart View. It's the app with the TV icon with four curved lines below. You will find this option in your Android phone's app drawer.

If you just installed the app from the Play Store, you can press the green "OPEN" button to launch the app.



Tap Allow when prompted. You only need to grant permissions to the app the first time you launch it.

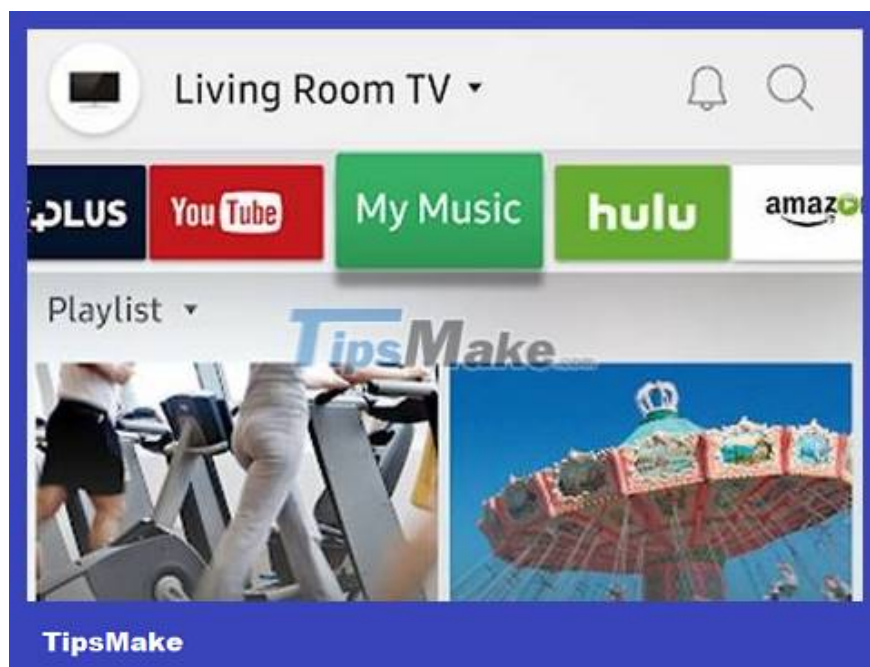


Select Samsung TV, if prompted. If multiple TVs are present on the Wi-Fi network, select the one you want to connect to. A notification will appear on the TV. If there is only one Samsung TV, it can connect automatically.



Select Allow on the TV. This option will appear at the top of the TV screen. Use the TV's remote control and press the "Allow" button.

Some Samsung Galaxy phones may connect automatically.



Select a TV app or media program to open. Once connected, you can select the program you want to watch on TV from your Android phone. All icons of Smart TV applications installed on Samsung TVs will display in a grid format on the Smart View application. Just click on any application to open it on TV.

You can also tap the remote icon in the upper right corner to use your phone like a Samsung remote control to control your TV.

Screen Mirroring/Screen transfer feature



Swipe down from the top of the home screen. This will open a section of the notification panel along with some quick settings tiles at the top of the screen (i.e. buttons with icons for Wi-Fi, Bluetooth, etc.).



Swipe down again. Now the entire panel opens up and shows more quick settings panes.



Tap SmartView or Cast . This will open a list of devices you can connect to. On some Android phones, this option may display "Screen Mirroring".

If you don't see one of these options, you'll have to swipe right on the second page of the notification panel.



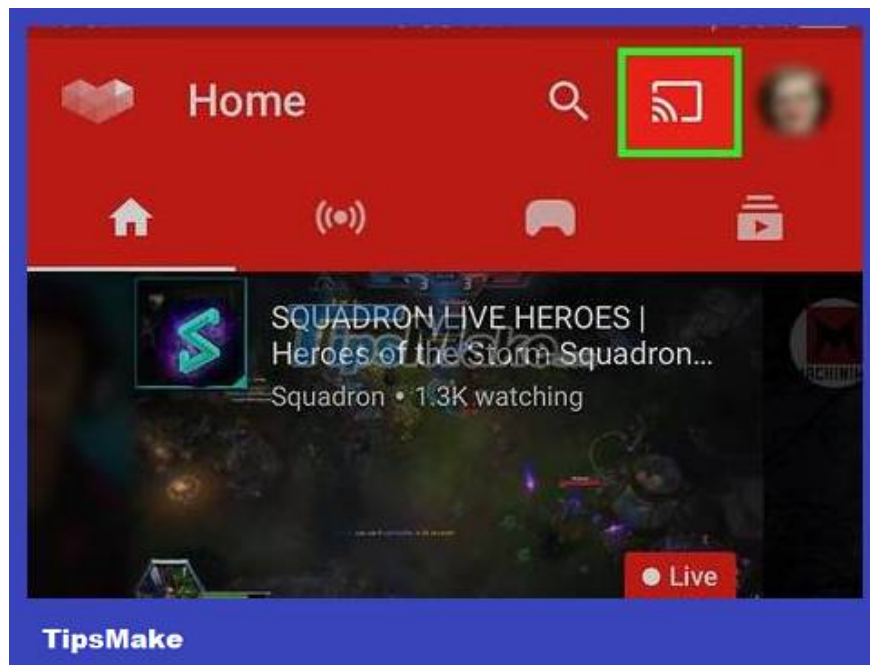
Choose your TV. The Android screen will display on the TV. Every action performed on the phone will also appear on the TV.

On some apps, you can rotate your phone sideways to display the phone screen in landscape mode.

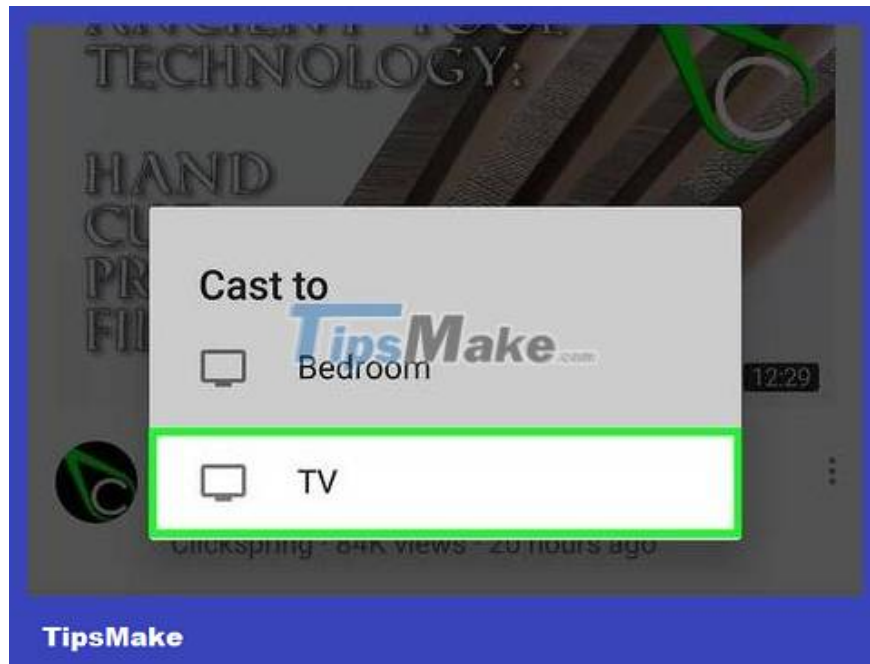
Cast from media apps



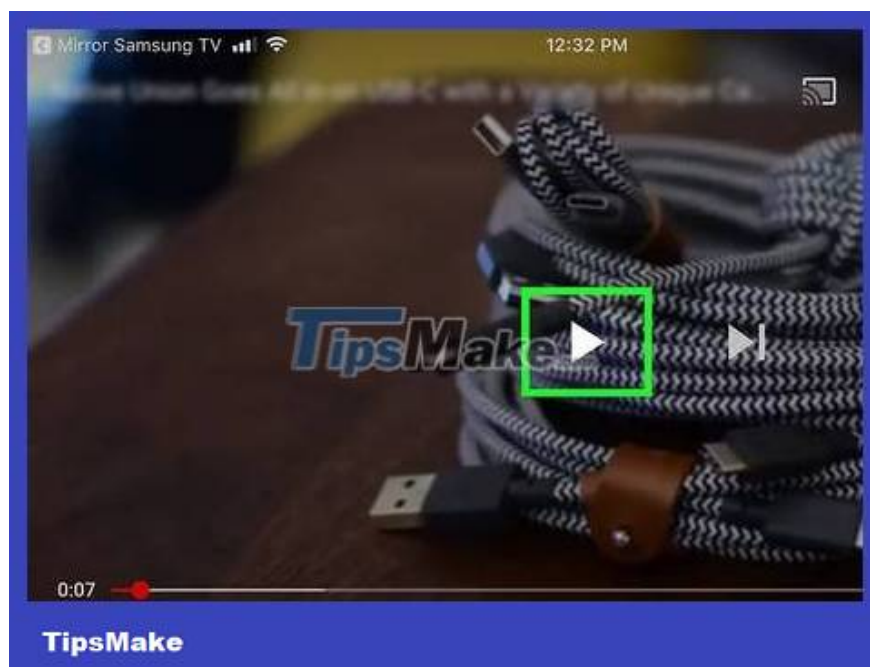
Open the app you want to stream to Smart TV. It can be YouTube, Hulu, Netflix and many other applications.



Tap the cast icon in the app. The location of this icon varies by application, but it is usually located in the upper right corner of the application. Find the rectangle with Wi-Fi signal in the lower left corner. A pop-up window with a list of devices on the network that you can connect to will appear.



Select Smart TV. The application on the phone will be connected to the TV.



Choose to open a program. The selected video or song will play on your TV and not on your phone, which means you can still use your phone during streaming.

You finished reading the article "**How to Use Smart View on Android**" edited by the [TipsMake](#) team. We hope this article has provided you with many useful tech tips and tricks. You can search for similar articles on tips and guides. Thank you for reading and for following us regularly.