

# How to use Smakoon to find restaurants on Windows 10

Smakoon application on Windows 10 helps you find restaurants and eateries close to your location.

It is not difficult for you to find restaurants, restaurants, cafes close to your current location, through the location finder application or right on Google Maps also available dining outlets. With Windows 10 computer, Smakoon is one of the few applications that can help you immediately get the name of a restaurant close to your current location.

Accordingly, the application relies on the location that users turn on the computer, and then recommends restaurants, cafes, bars around the current location or anywhere in the world. The app also has specific directions to the restaurant location we choose. The following article will guide readers how to use Smakoon to find restaurants on Windows 10.

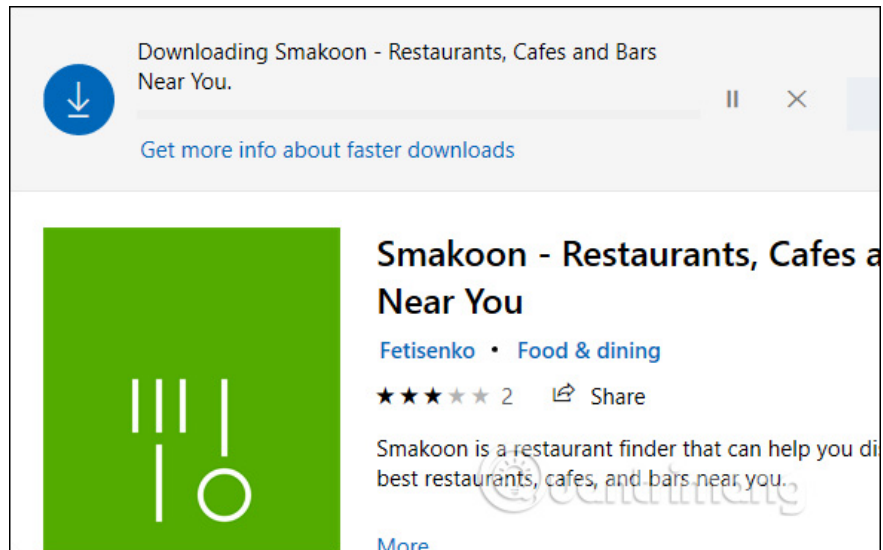
1. Turn off location tracking on Windows 10
2. How to fix the error does not enable GPS on Windows 10
3. How to turn on, turn off Location Sensing on Windows 7 and Windows 8
4. How to activate the Find My Device feature to find lost Windows 10 computers?

## Instructions for finding restaurants on Windows 10

### Step 1:

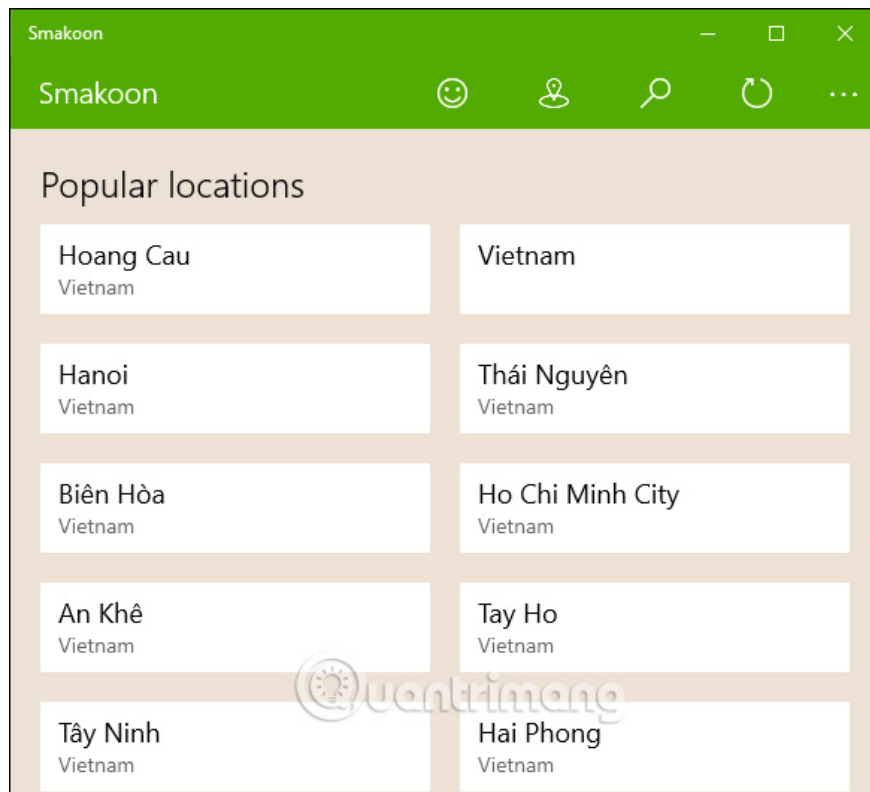
Users download Smakoon application for Windows 10 according to the link below.

1. Download the Smakoon Windows 10 app

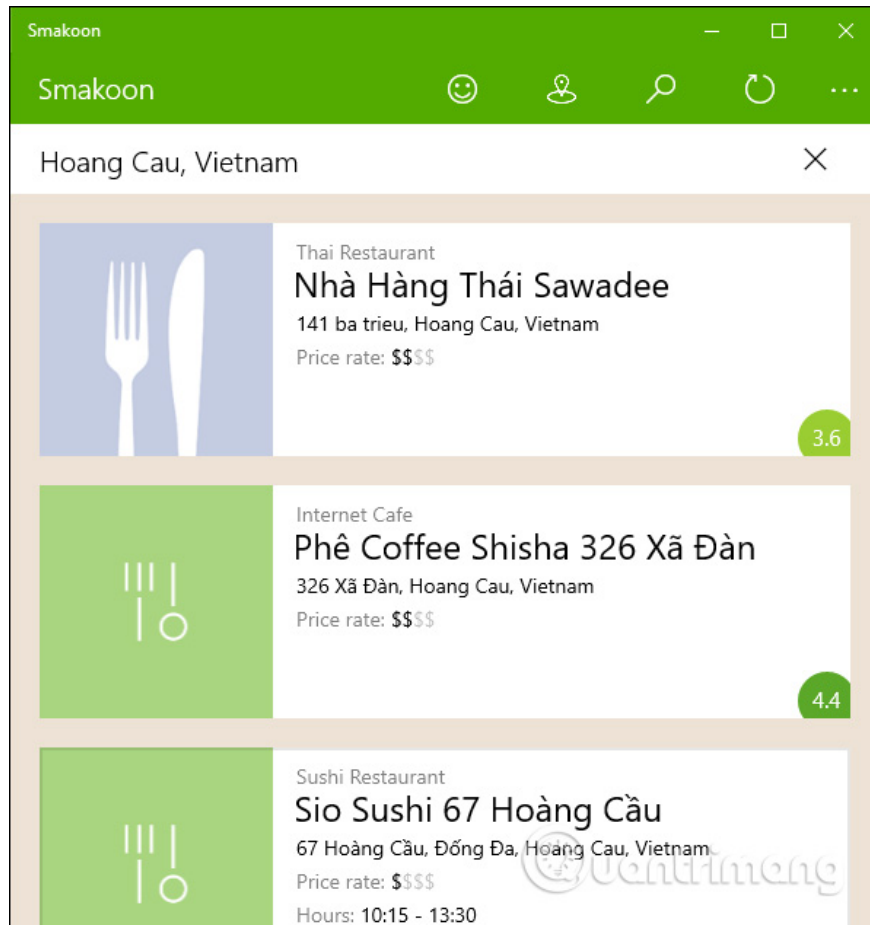


## Step 2:

After installation is complete, we start the application. Right at the interface of the user application see the country and the names of the popular cities of that country. With Vietnam, there will be Hanoi, Hai Phong, Tay Ninh, .

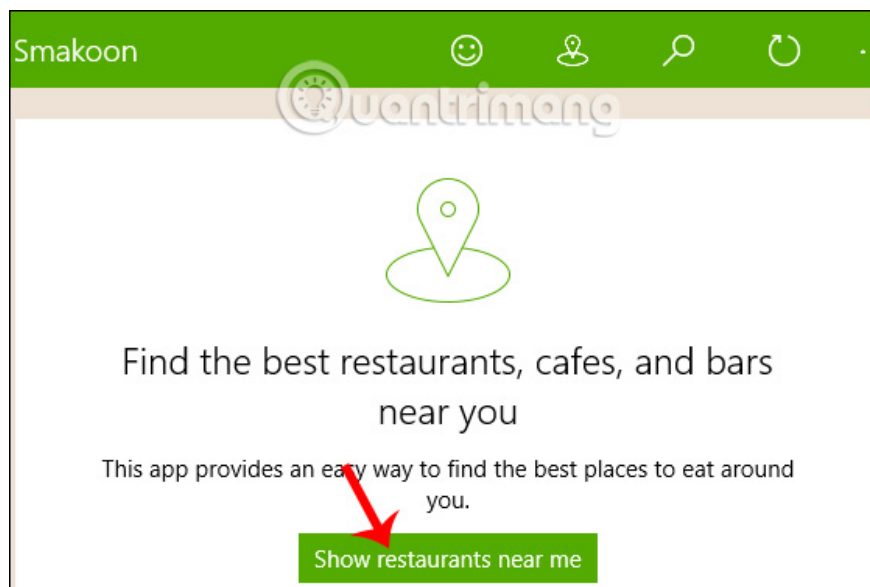


When clicking on a location we will see some restaurants, restaurants, and cafes introduced to users.

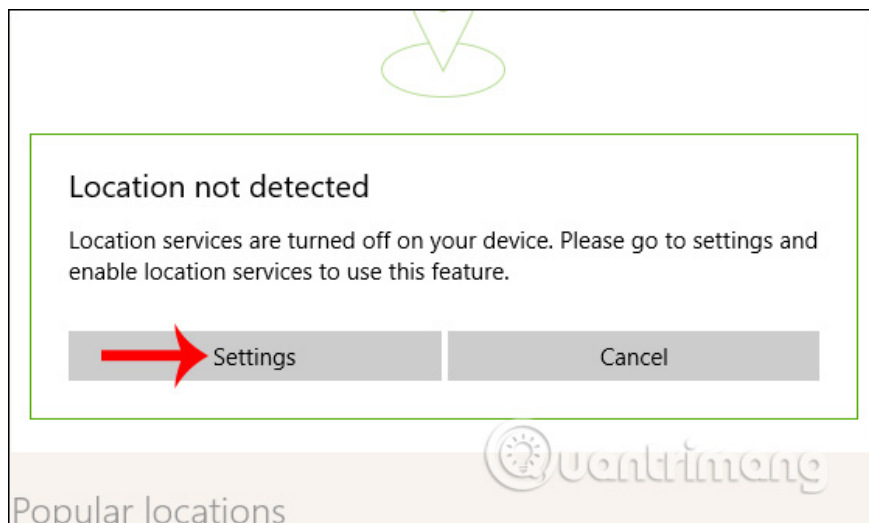


### Step 3:

However, to find more accurate, we should search based on our current position. Go back to the main interface of the application and click **Show restaurants near me** .



Next we proceed to set the location on the computer if not enabled. If the **Location not detected** dialog box appears, click **Settings** to access the Windows location setting interface.



#### Step 4:

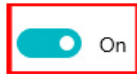
In the position setting (Location) interface, the section **Allow access location on test device** user switches to **On mode** to turn on positioning on the computer.




Next to the bottom of the **Allow app to access your location** section, you also activate **the On mode** so that applications are allowed to use the location on the device.

## Allow apps to access your location

If you allow access, you can use the settings on this page to choose which apps can access your device's precise location and location history to enable location-based experiences such as directions and weather. If you are signed in with a Microsoft account on this device, your last known location is saved to the cloud, and shared with other devices where you are signed in with your Microsoft account. Denying access only blocks the apps listed on this page from accessing your location.



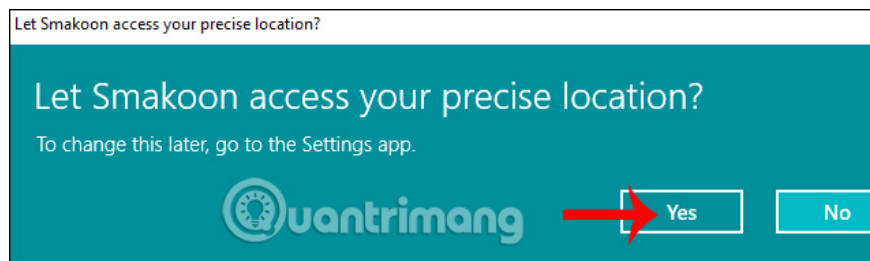
Some desktop apps may still be able to determine your location when settings on this page are off. [Find out why](#)

If an app is using your location, you'll see this icon: 

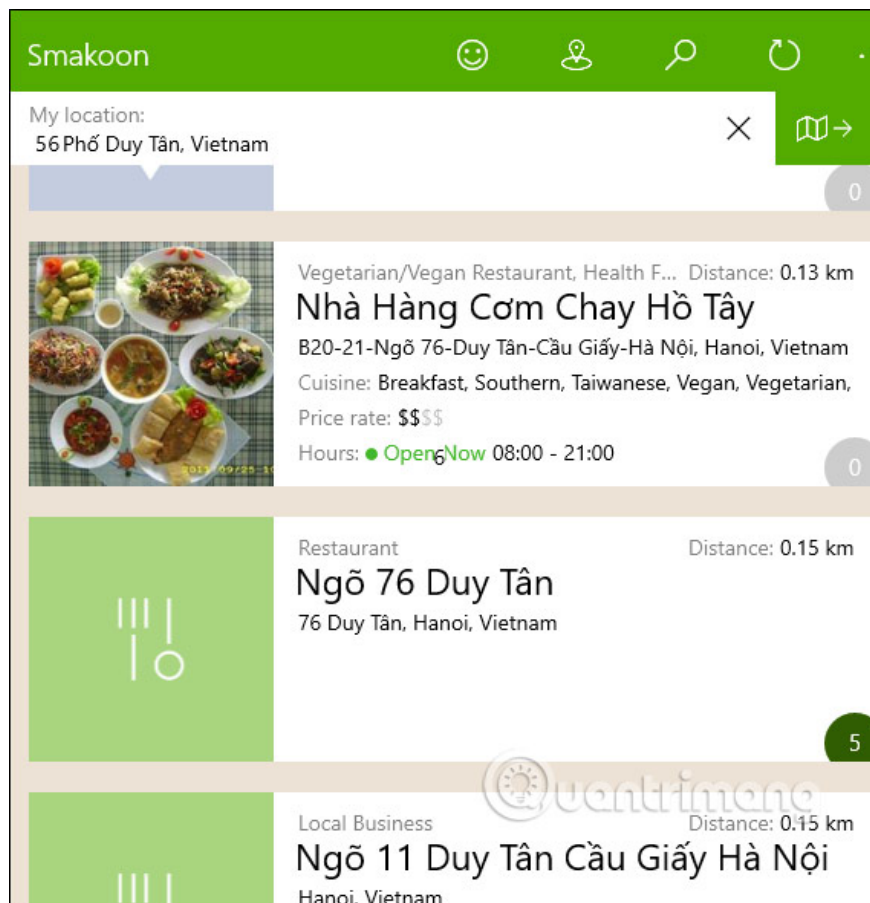


### Step 5:

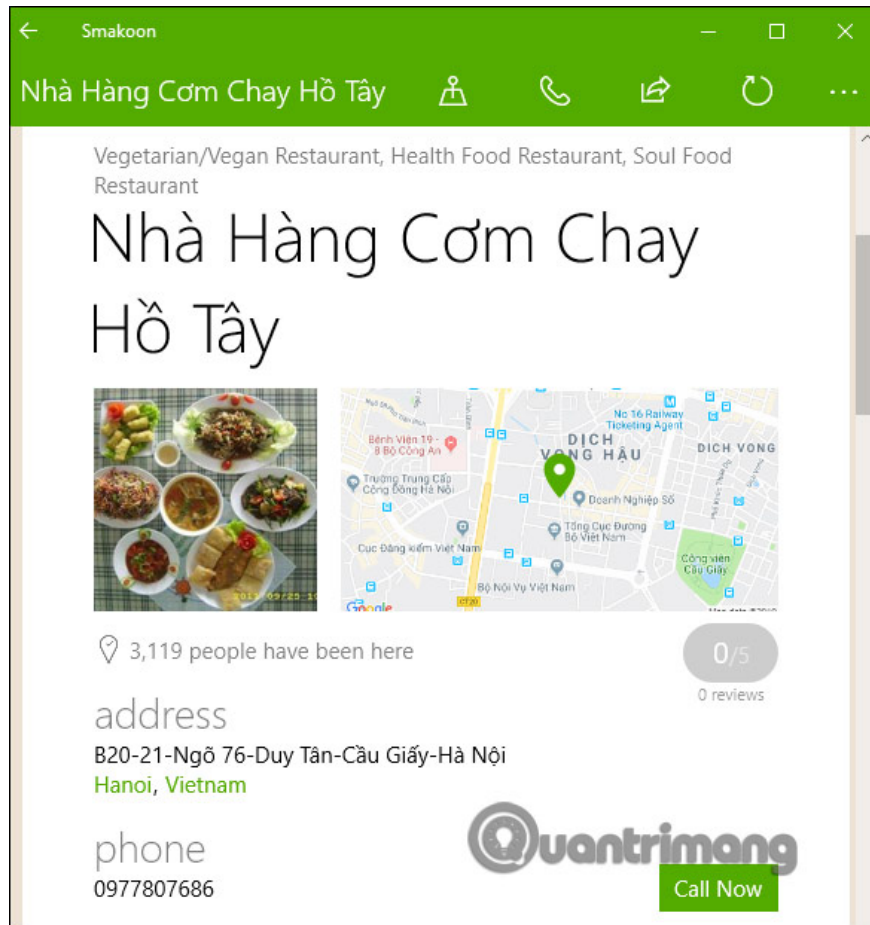
Go back to the Smakoon application interface and press again on Show restaurants near me, continue to **press Yes** to agree to the application to use the location on the computer.



Smakoon results instantly update your current location and display suggestions for nearby restaurants and eateries.

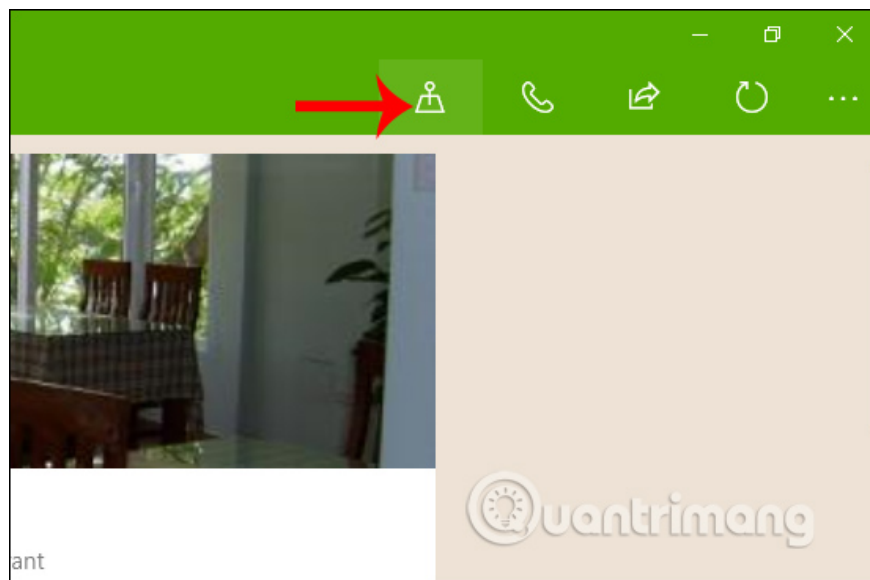


We click on the recommended restaurant for more details. In the restaurant interface, users know more about the location on the map, phone number of the restaurant, service time, payment options, access to the Facebook page of the restaurant if available.

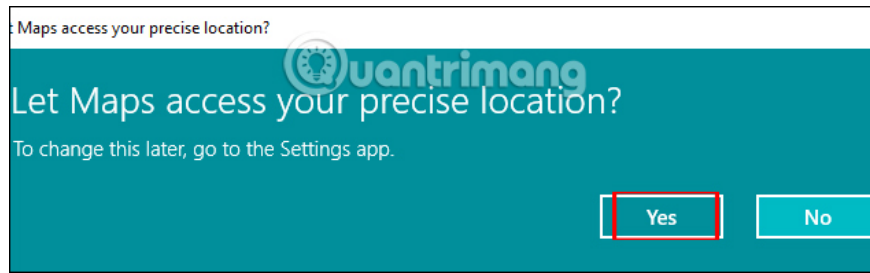


### Step 6:

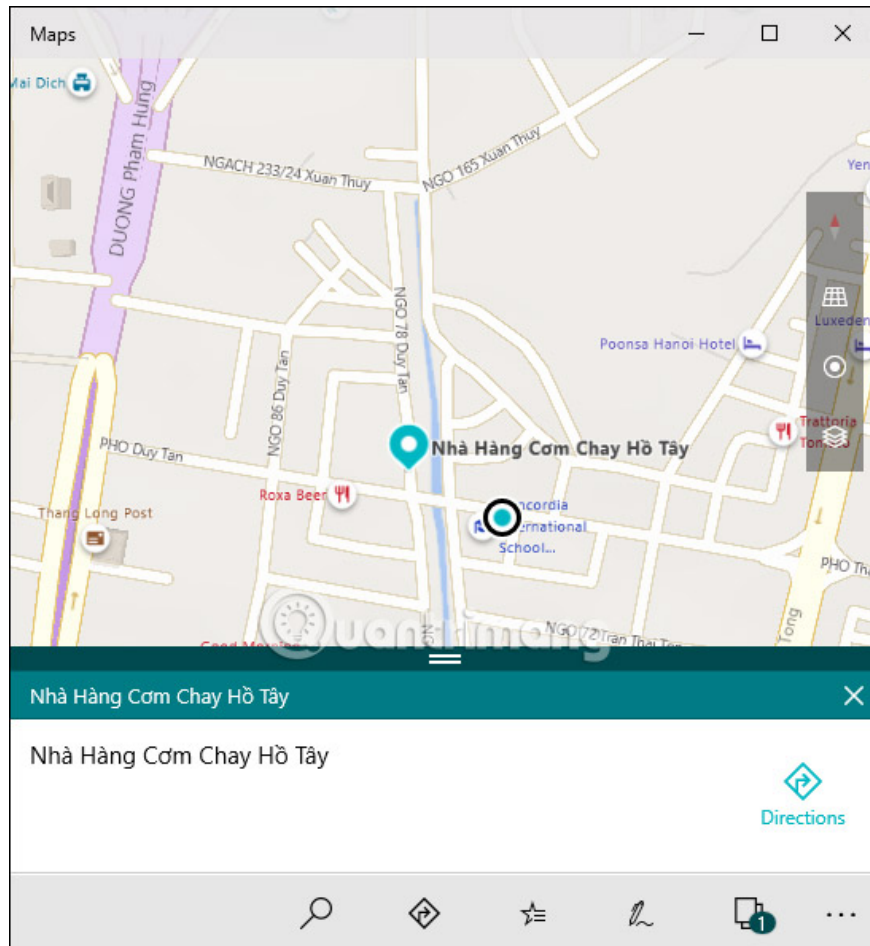
To open the shop location and restaurant on Windows Maps, click on **the Show on map icon** as shown below.



Users then need to agree to the map application to use the device's current location, **click Yes**.

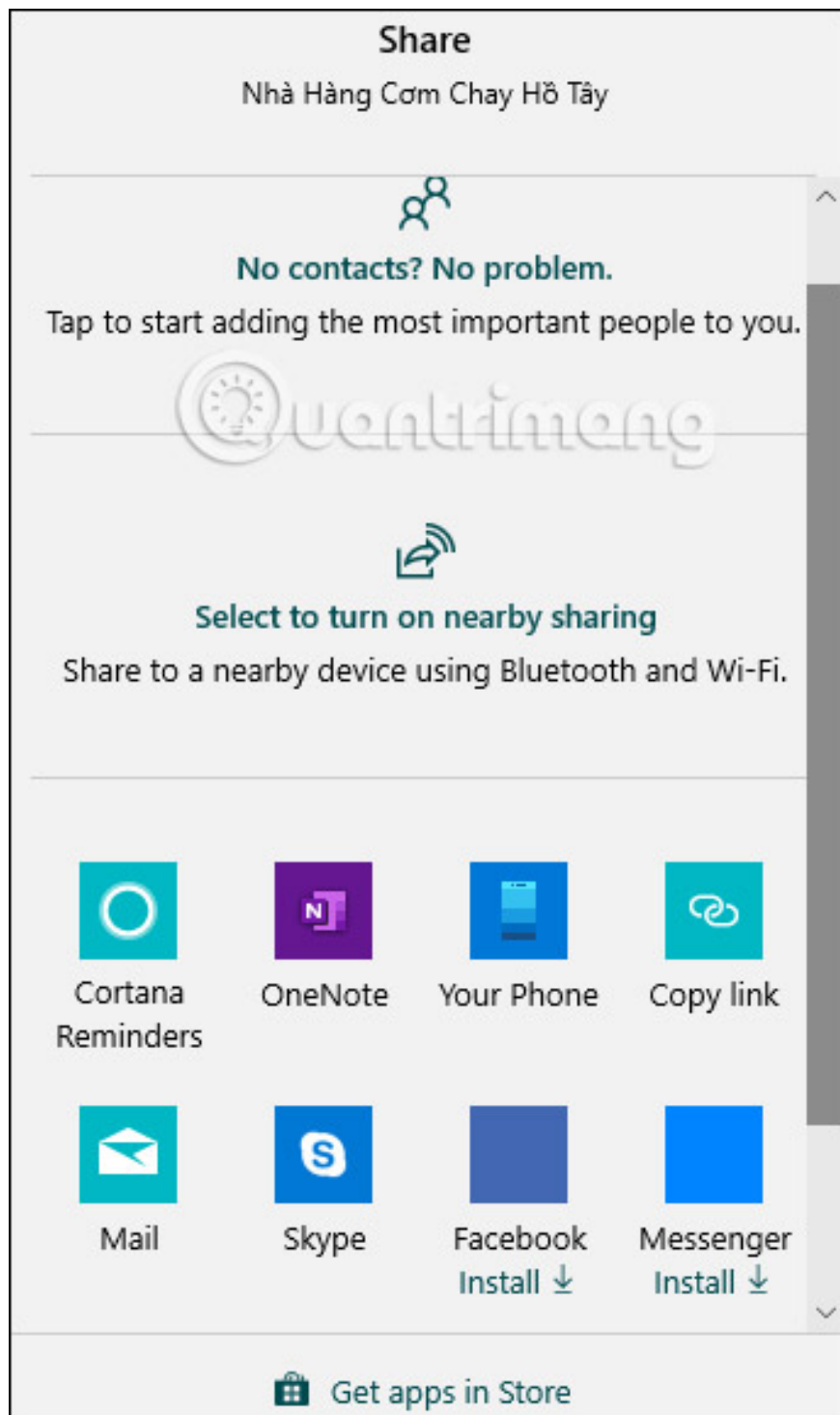


Display map view with specific location for that restaurant. This map is full of street and lane names, so we can easily find more paths.



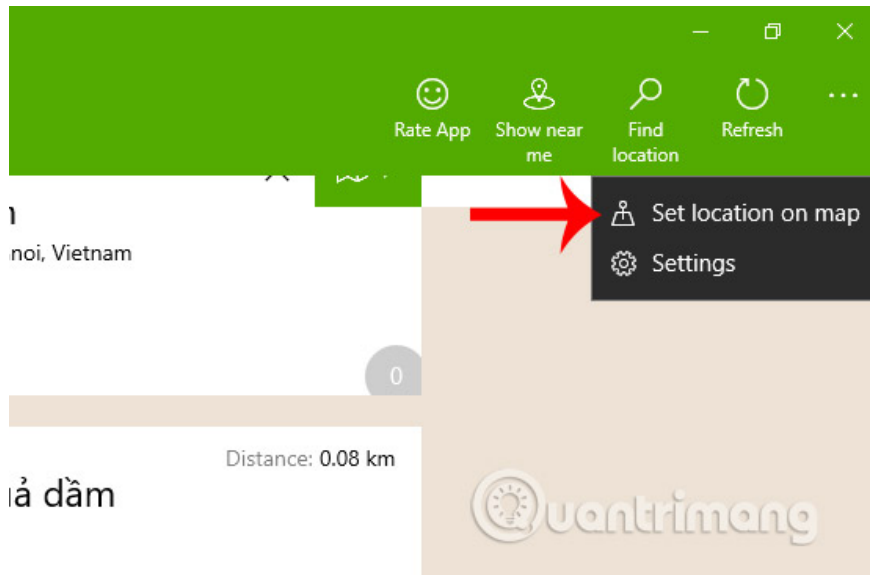
### Step 7:

Back at the restaurant's detailed information interface, users click on the sharing icon and then select the service that wants to share this information.

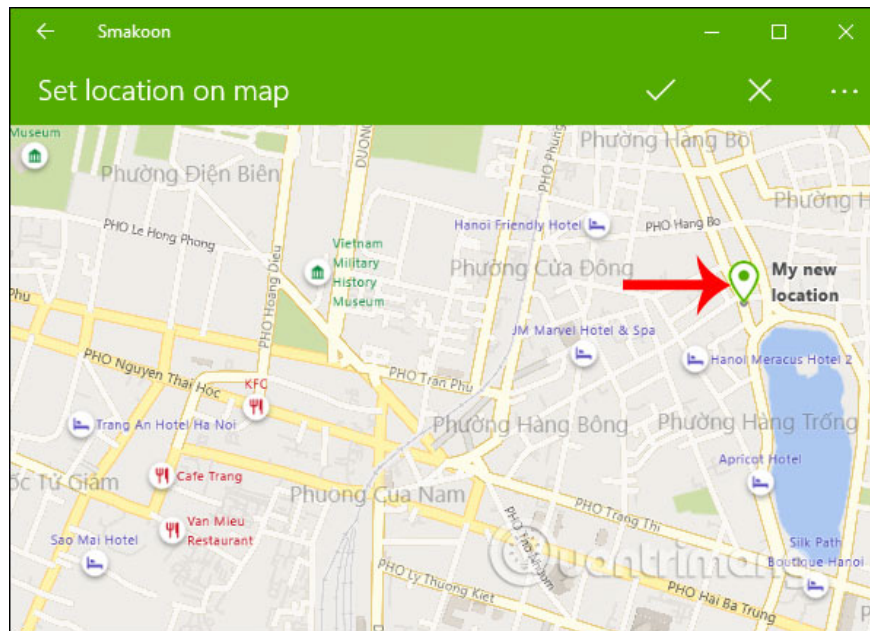


**Step 8:**

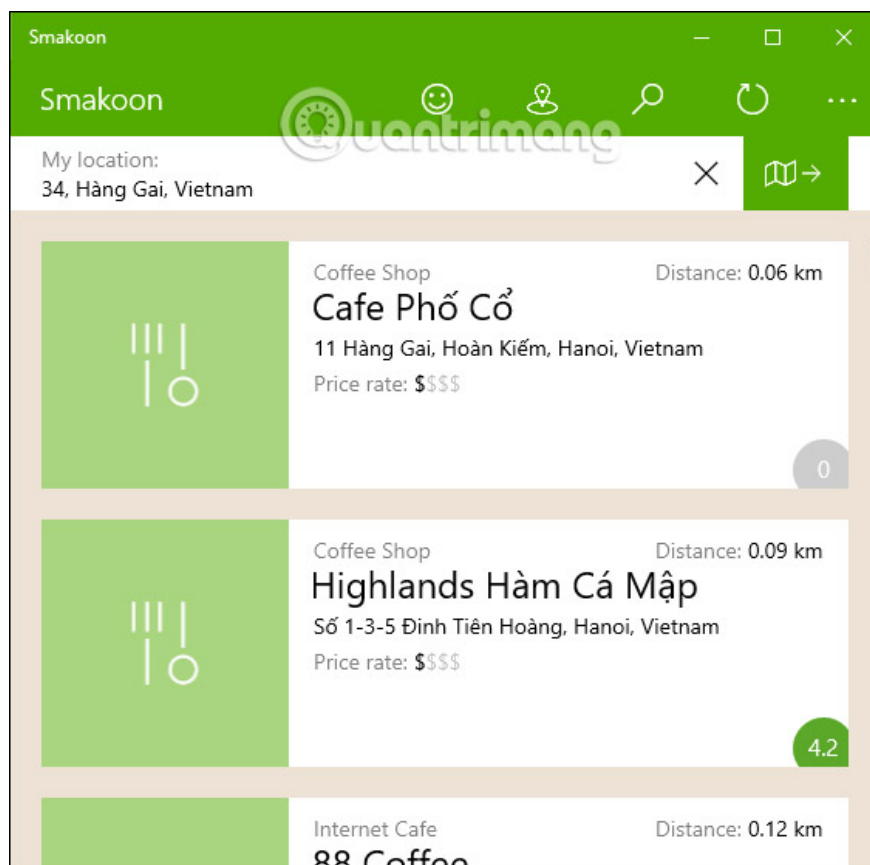
If the user wants to find a restaurant in a different location, you can use the **Set location on map feature** as shown below.



Display the map interface for users to search for any location they want. When done, click on the checkmark to save the new location.



The results also show locations around the new location that the user has selected.



Smakoon app does a pretty good job of finding places around the location that users turn on the device, or the location you choose yourself. When finished using the application, users can turn off location on the computer.

I wish you all success!

You finished reading the article "**How to use Smakoon to find restaurants on Windows 10**" edited by the [TipsMake](#) team. We hope this article has provided you with many useful tech tips and tricks. You can search for similar articles on tips and guides. Thank you for reading and for following us regularly.