

How to Use Remote Desktop on Windows 8

This wikiHow will teach how to use the Remote Desktop app in Windows 8 to connect to other Windows computers. Click the Start button on the computer you want to connect to. While you can start a remote connection from any Windows 8...

Method 1 of 2:

Using Windows Remote Desktop



Click the Start button on the computer you want to connect to. While you can start a remote connection from any Windows 8 computer, you can only connect *to* computers running specific versions of Windows.

1. Be aware that this will only work on local networks. It will not work over the internet. If you need to connect to your computer over the internet, you can use Chrome Remote Desktop instead.



Type **winver** and press **Enter**. Typing while on the Start screen will automatically start searching.



Look underneath the Microsoft copyright for your Windows version. You'll see the name of your Windows version written out underneath the Microsoft copyright information. Only the following versions of Windows 8 can be connected to:

1. Windows 8.1 Pro
2. Windows 8.1 Enterprise
3. Windows 8 Enterprise
4. Windows 8 Pro

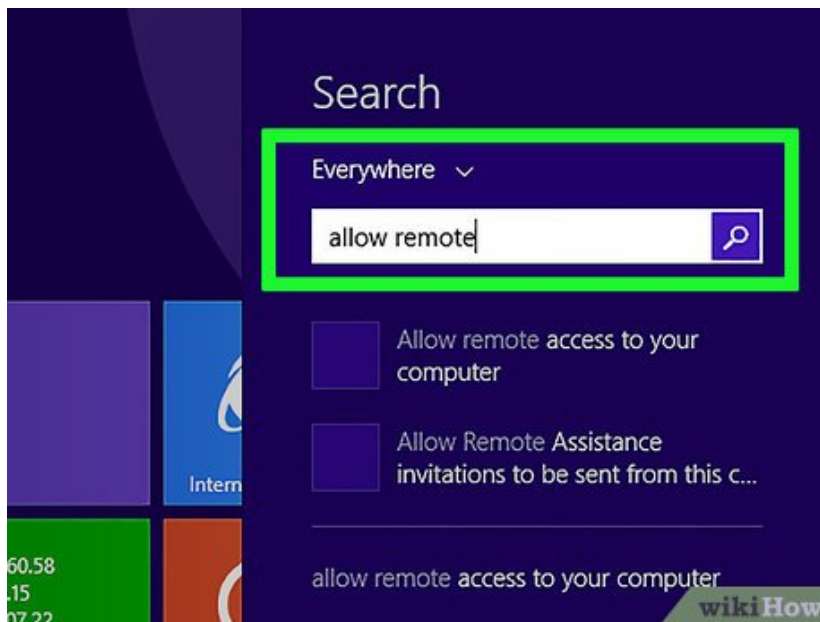
4.



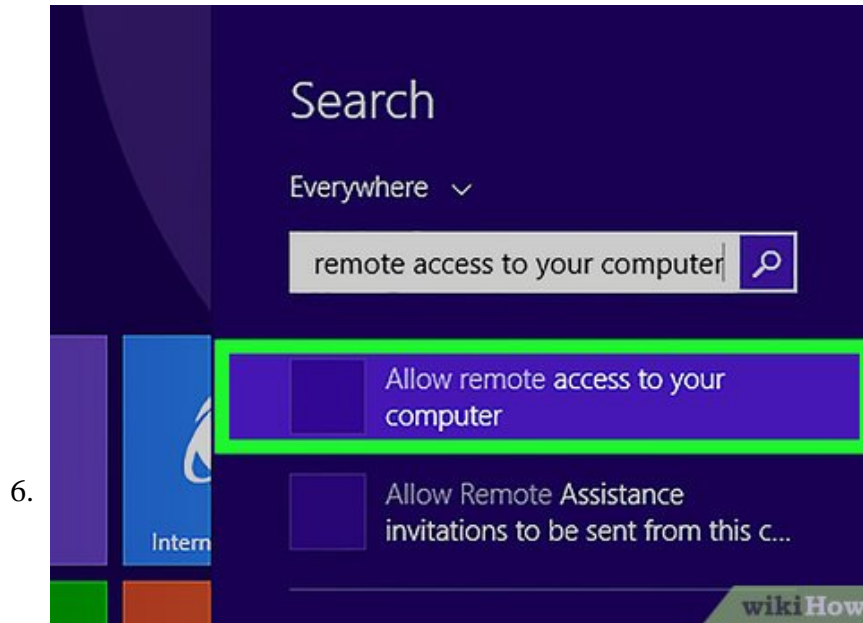
Click the Start button again on the computer you're connecting to. If you've determined that the computer will support a remote connection, you'll need to enable incoming connections for it.

1. If the computer you're connecting to is not running a Pro or Enterprise version of Windows, you can use Chrome Remote Desktop instead.

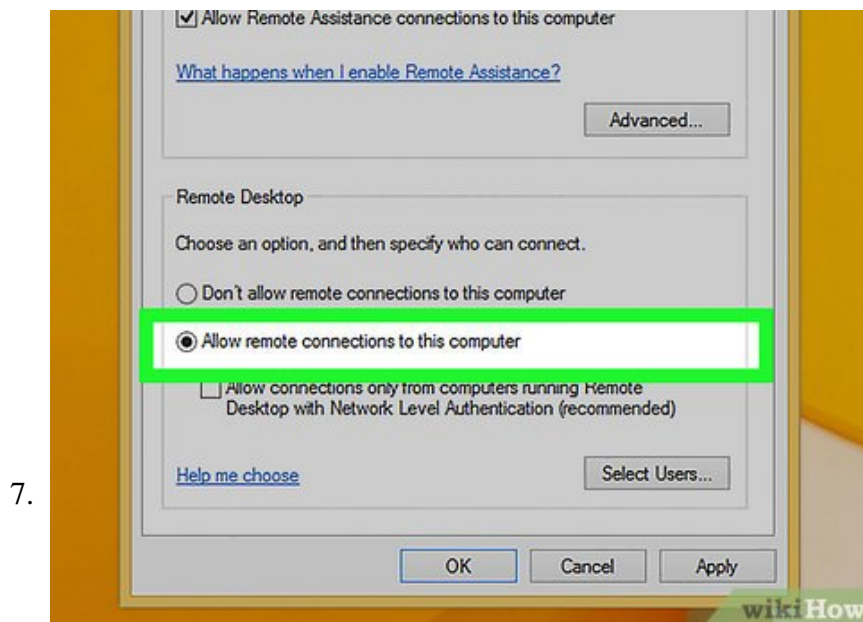
5.



Type `allow remote`.

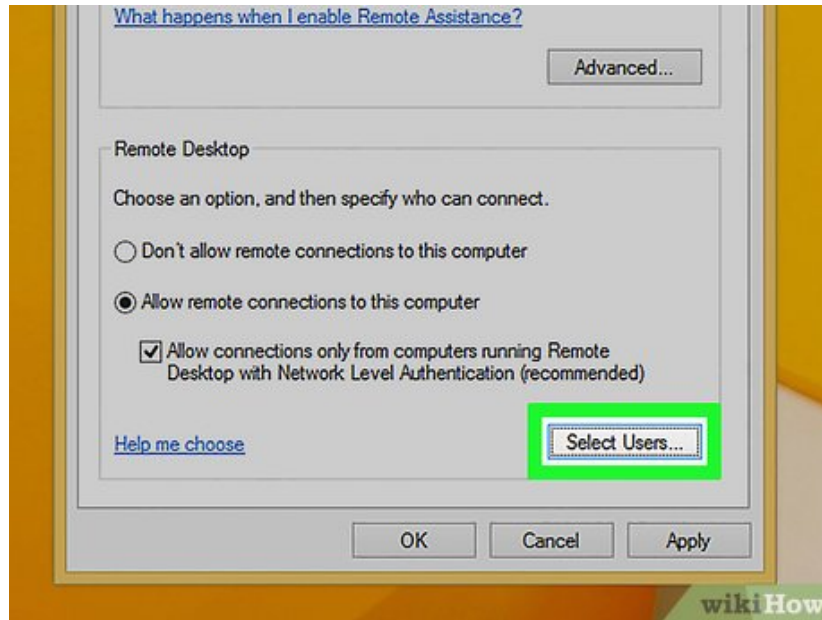


Click **Allow remote access to your computer** .



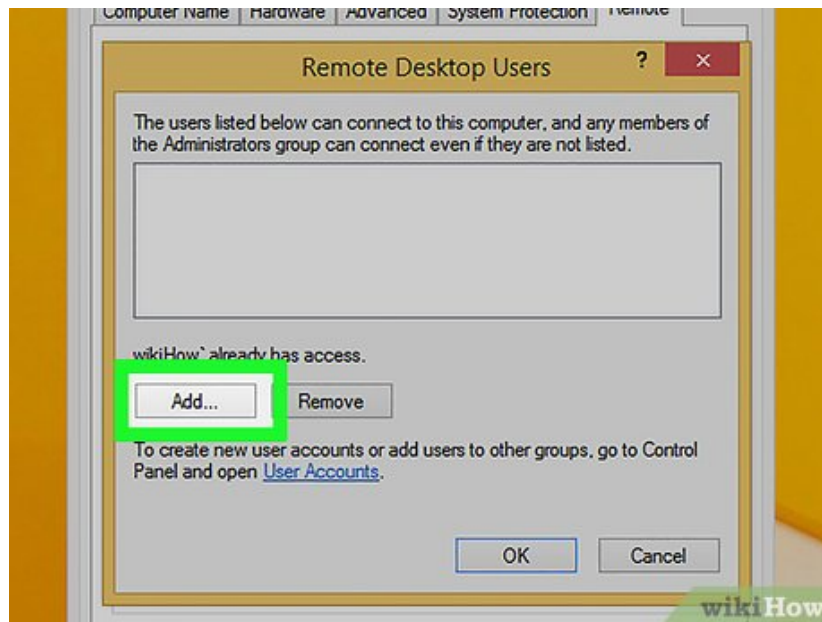
Allow connections from any version of Remote Desktop. Click the "Allow connections from computers running any version of Remote Desktop" option.

8.



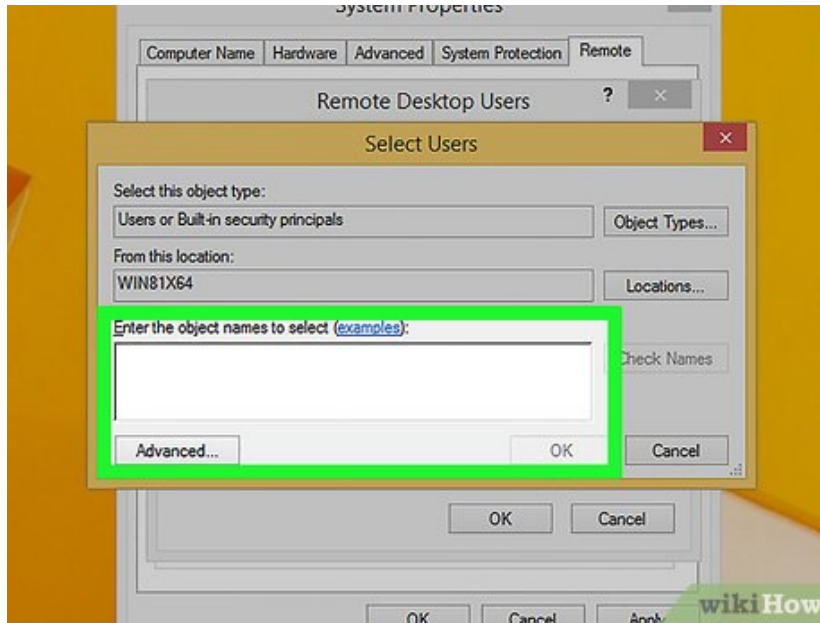
Click **Select Users**.

9.



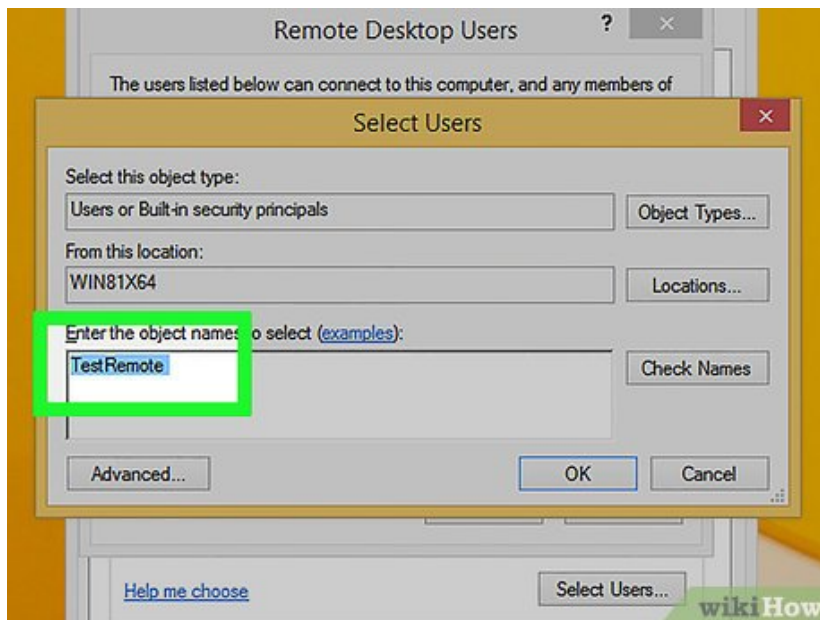
Click **Add**.

10.



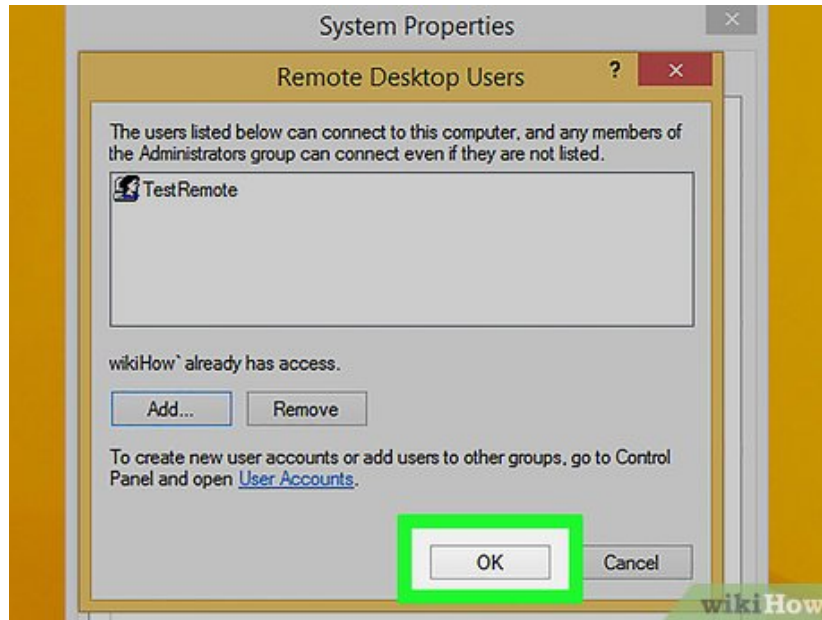
Click the **Enter the object names to select** field.

11.



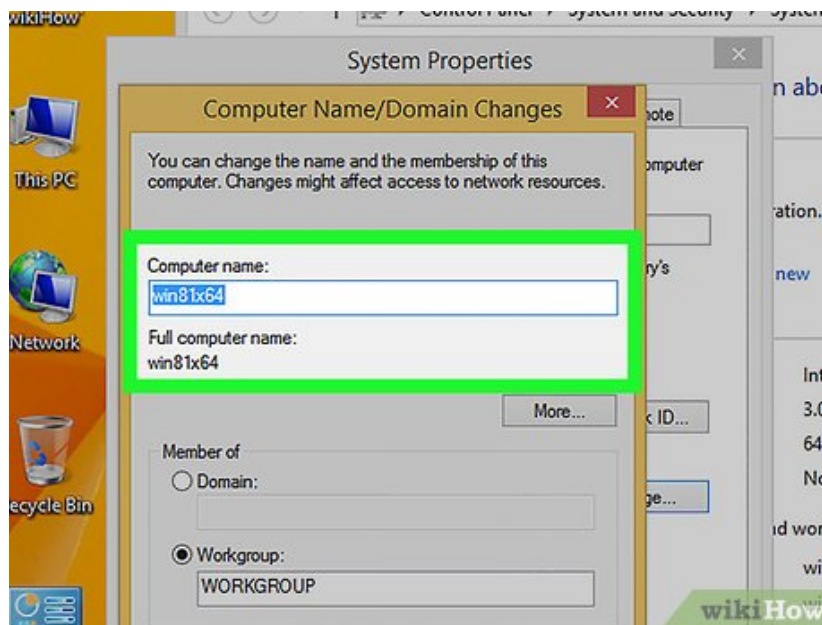
Type in the name of the user you want to allow. For example, if you want to be able to remotely access this computer yourself, enter your Windows username.

12.



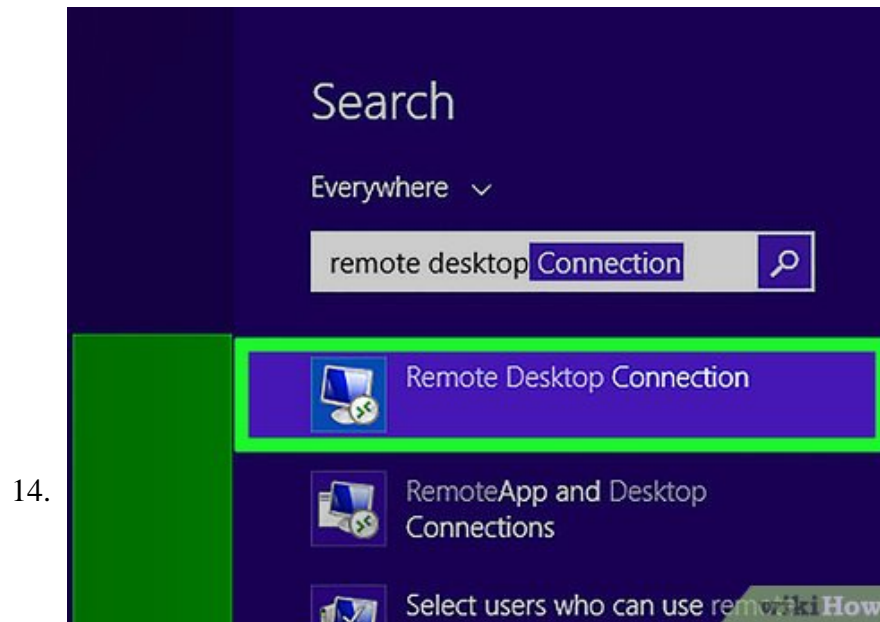
Click **OK**. The user you've specified will now be able to connect remotely to the computer.

13.



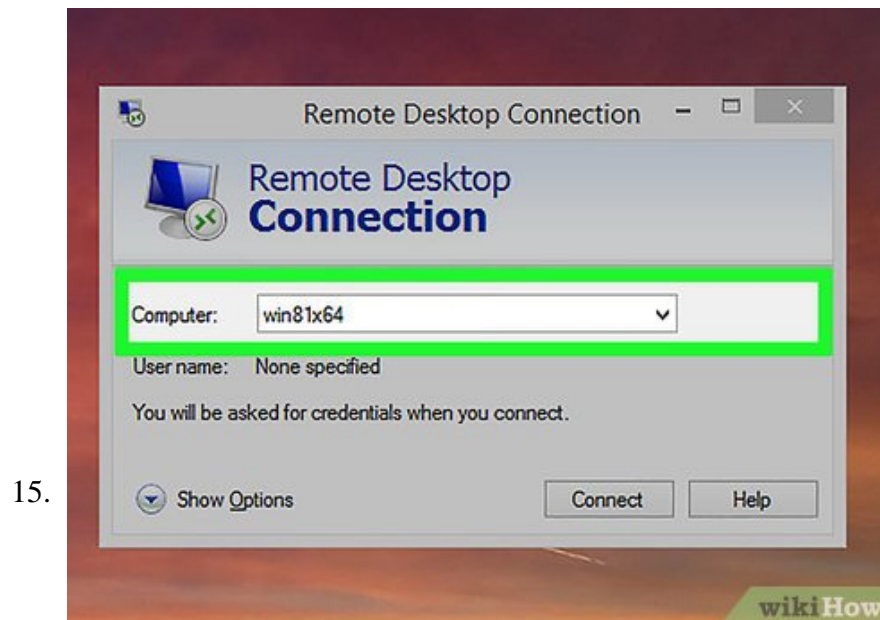
Find the remote computer's name. You'll need the full computer name to connect to it remotely:

1. Click the Start button.
2. Type `system` and press `? Enter`.
3. Find the computer name in the "Computer name, domain, and workgroup settings" section.



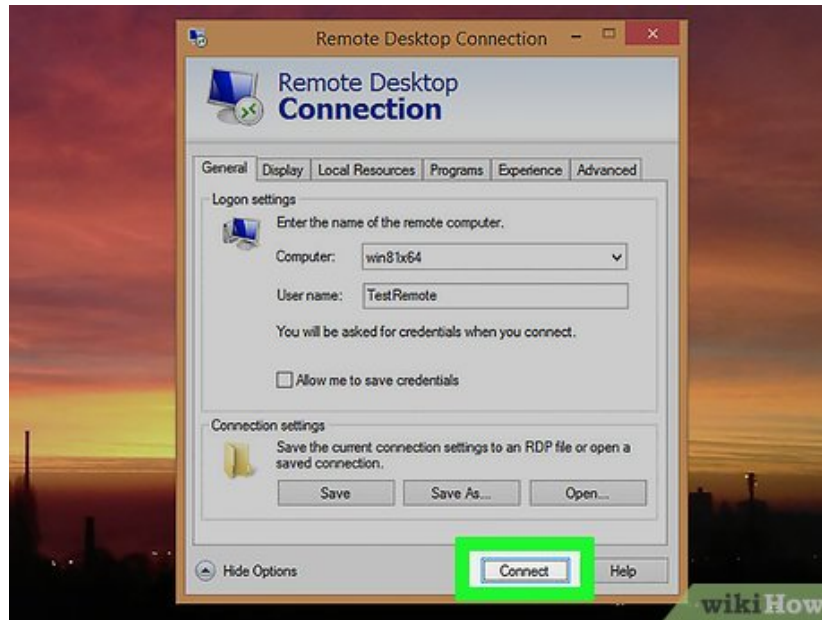
Open the Remote Desktop app on your other computer. If you don't have this app, you can download it for free from the Windows Store.

1. To quickly open the Remote Desktop app (if it's installed), click the Windows button, type `remote desktop`, and press `Enter`.



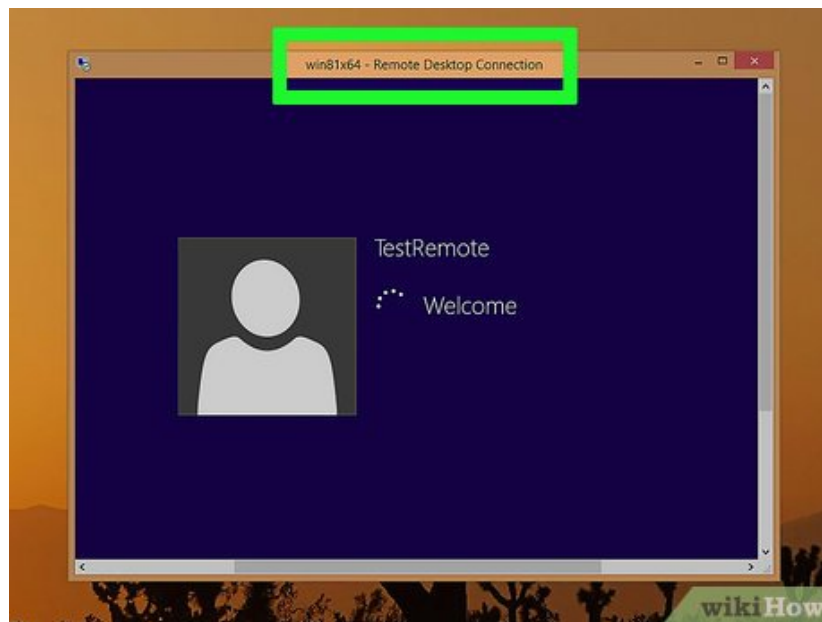
Type the name of the computer you're connecting to. Make sure to enter in the complete full name you found earlier.

16.



Click **Connect**.

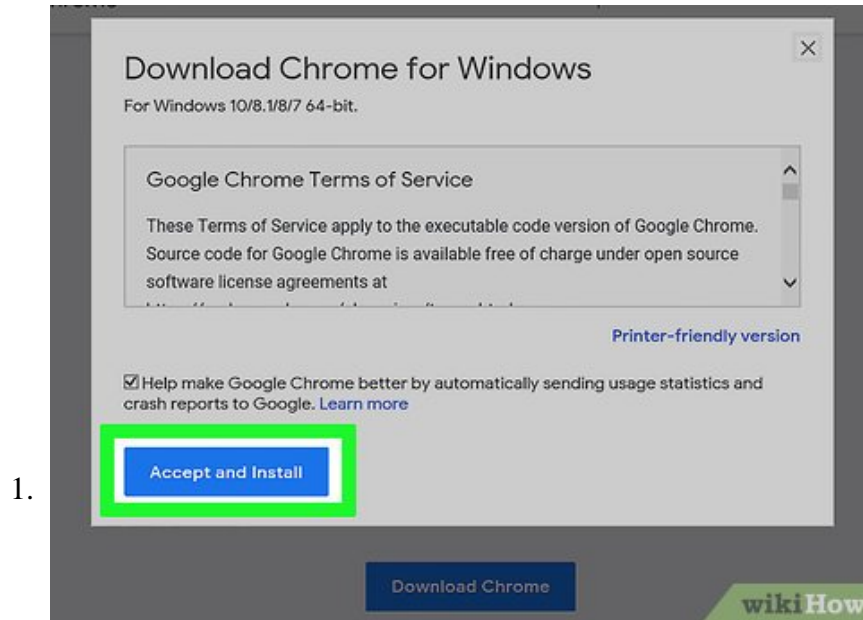
17.



Control the remote computer from within the Remote Desktop app. Once you're connected, you'll see the remote computer's desktop in the Remote Desktop window. You can control the remote computer just like your own local computer.

Method 2 of 2:

Using Chrome Remote Desktop



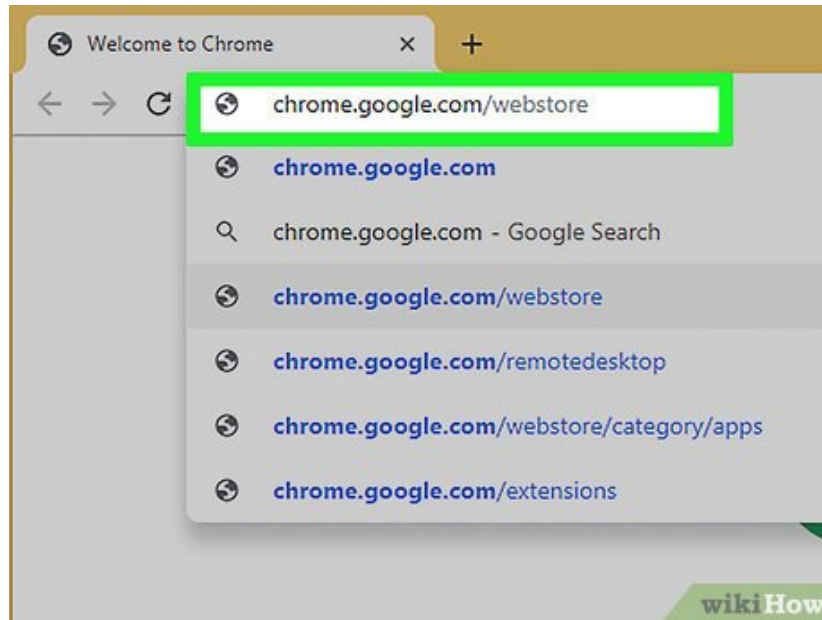
Install Chrome on the computer you want to access. If you can't use the Windows Remote Desktop app because of incompatible versions, you can use Chrome Remote Desktop instead. This requires Google Chrome be installed on both computers.

1. You can install Chrome from google.com/chrome. Click the Download button and follow the prompts to install it.



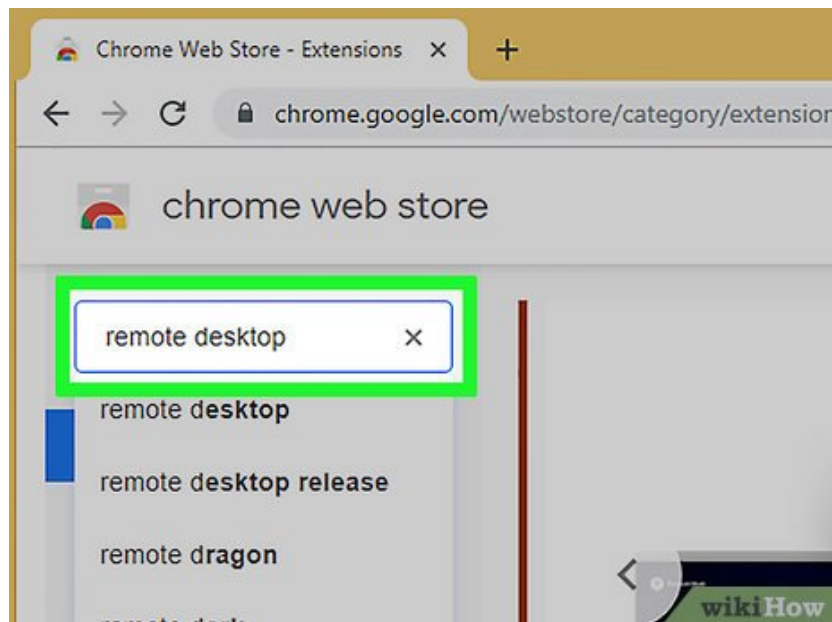
Open Chrome on the computer you want to access. You'll find it on your desktop after installing it.

3.

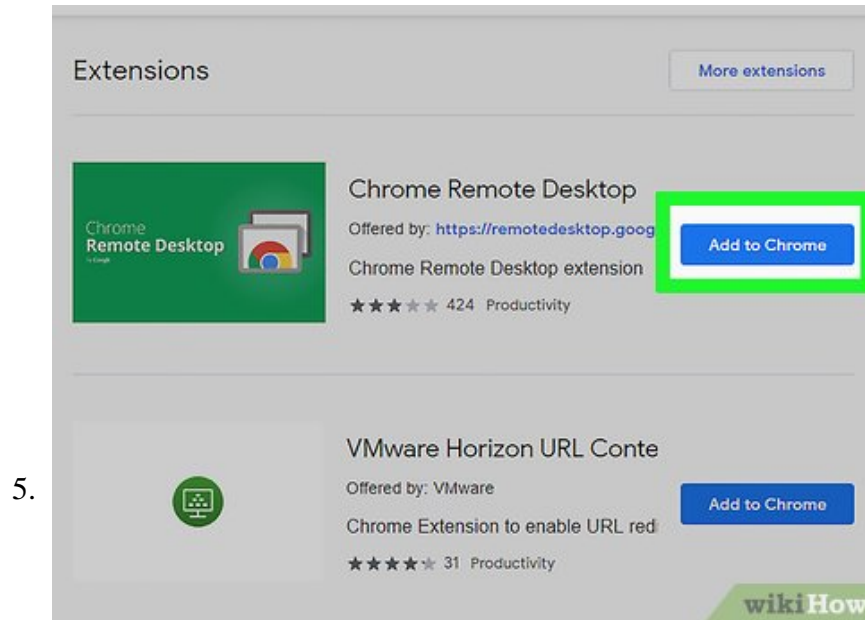


Visit the Chrome Web Store. Go to `chrome.google.com/webstore` in your Chrome browser.

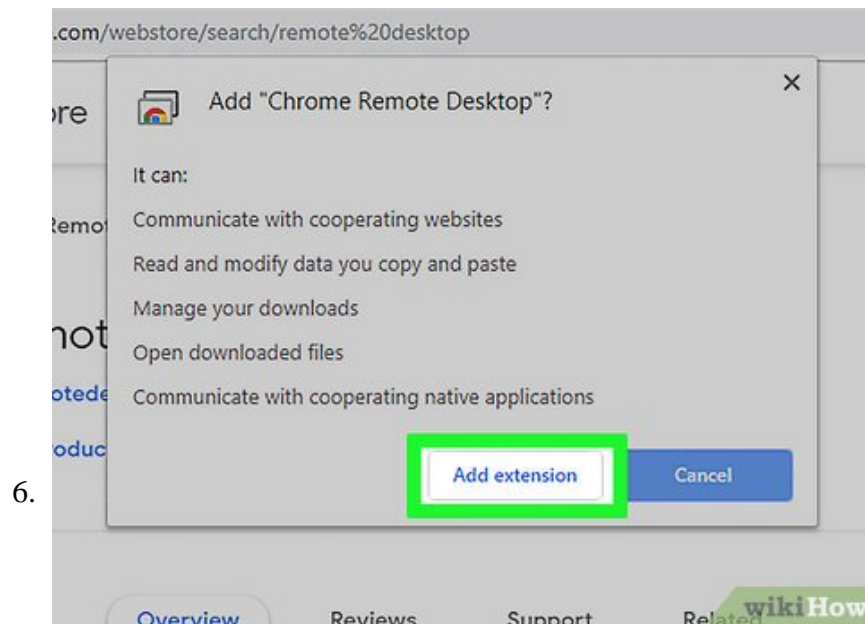
4.



Search for `remote desktop`.

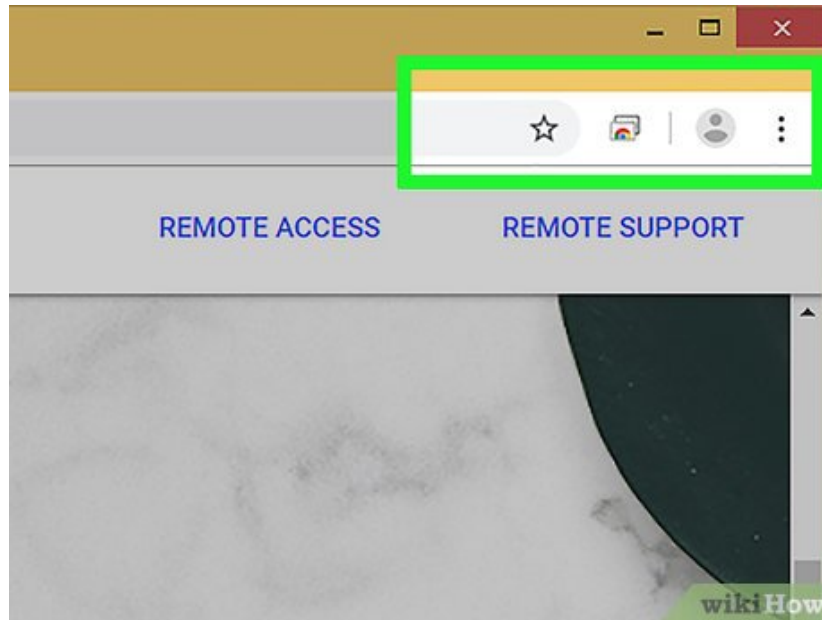


Click **Add to Chrome** next to **Chrome Remote Desktop**. You'll see this result in the Apps section of the search results.



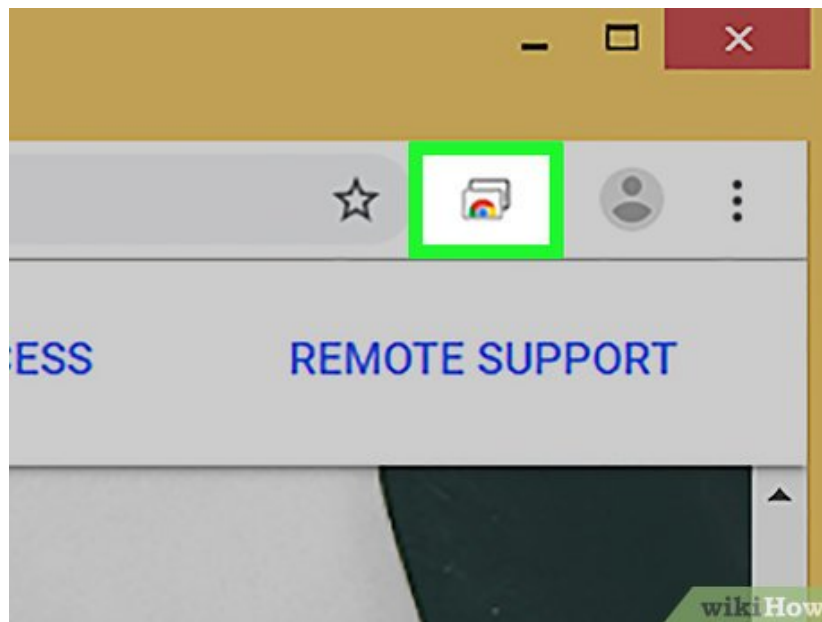
Click **Add app** in the window that appears.

7.

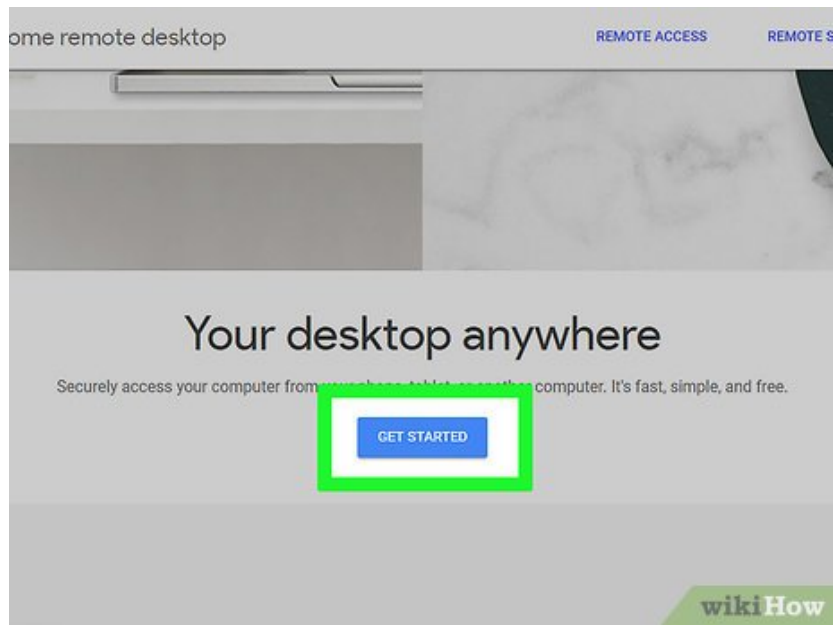


Type `chrome://apps` into the Chrome address bar. This will display your Chrome apps.

8.

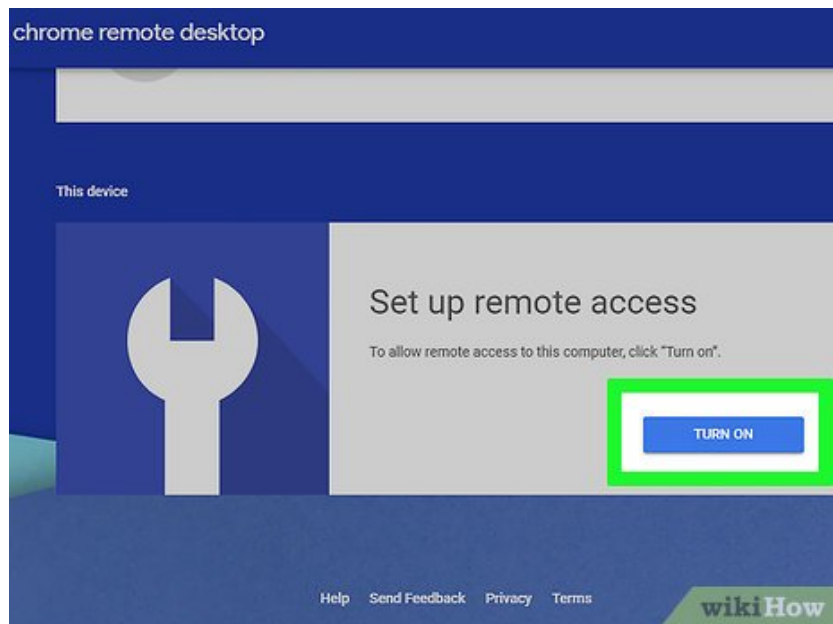


Click `Chrome Remote Desktop`.



9.

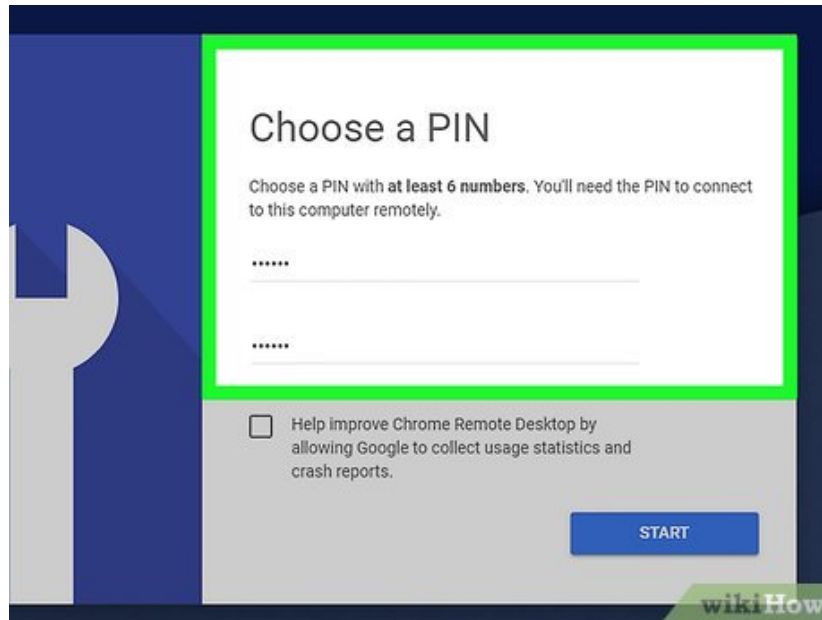
Click **Get Started**.



10.

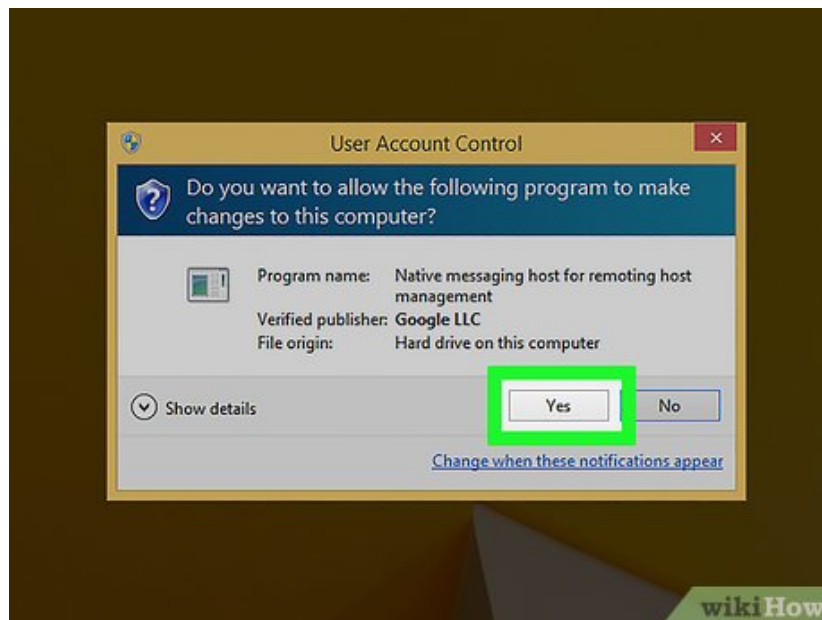
Click **Enable remote connections**.

11.



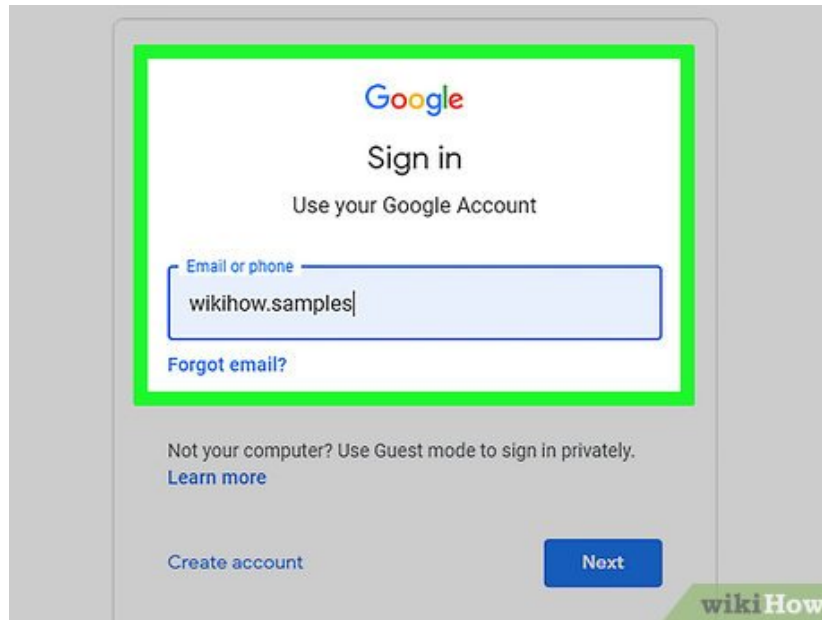
Type a PIN. This PIN will be used to connect to the computer.

12.



Click **Yes**. This will install the remote service.

13.



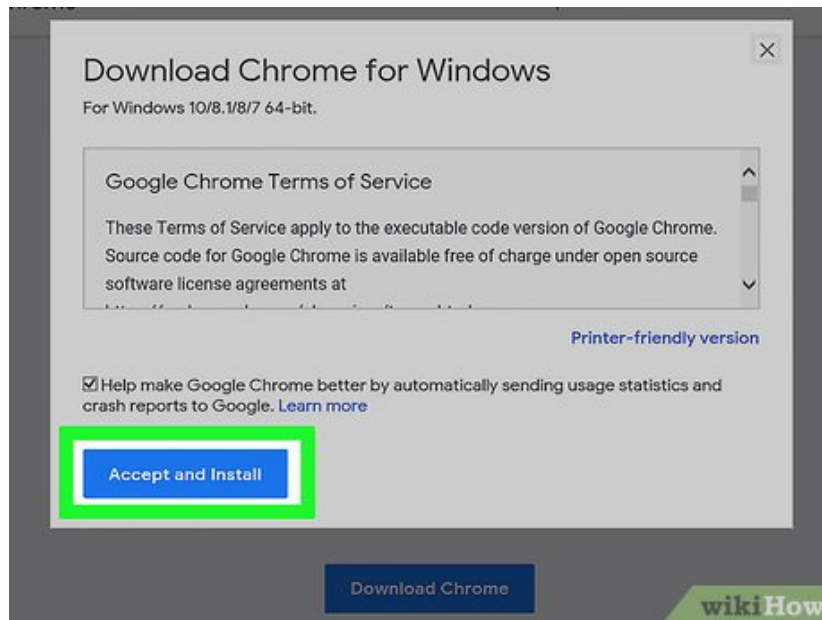
Sign in with your Google account. You'll need to be signed in with a Google account in order to enable remote access.

14.



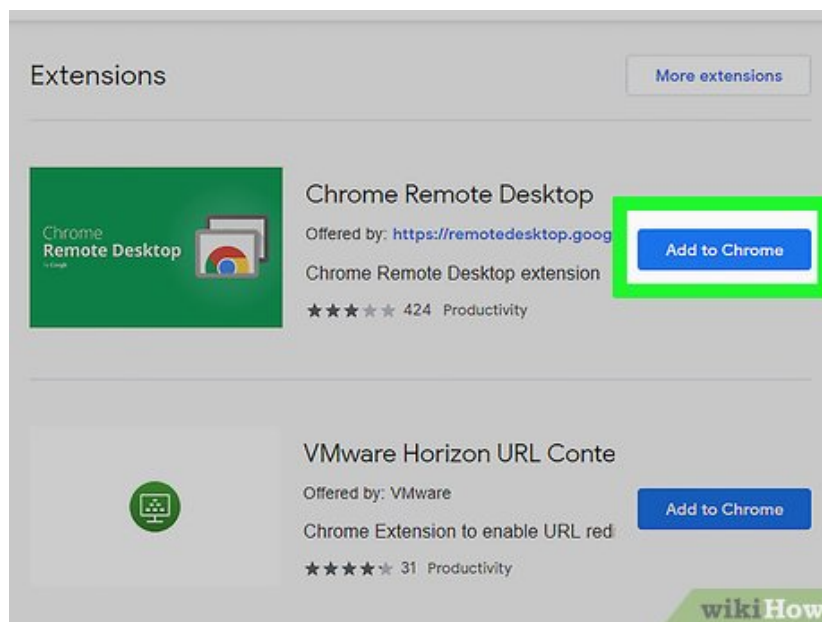
Enter the PIN to confirm. Remote access is now enabled for that computer.

15.



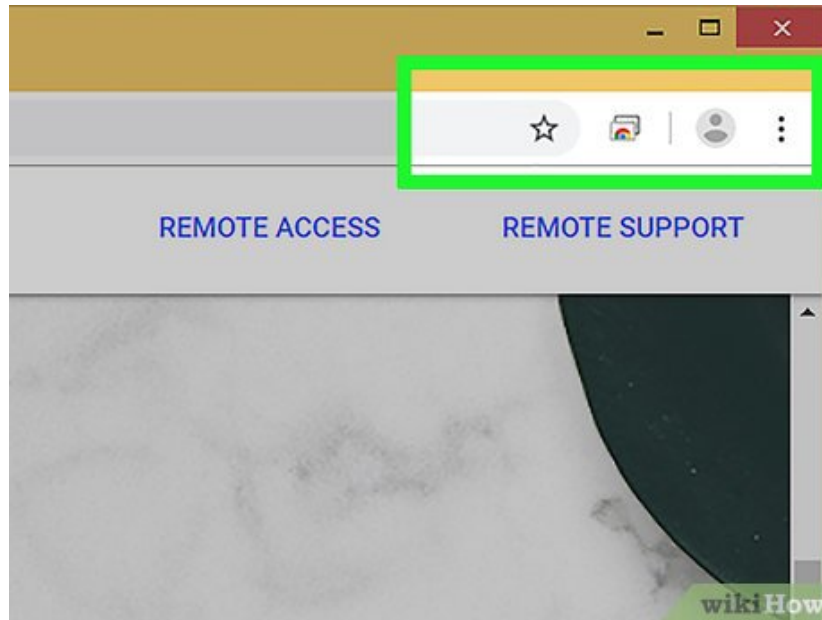
Install Chrome on the computer you want to connect from. You'll need Chrome on the client computer as well as the host computer.

16.



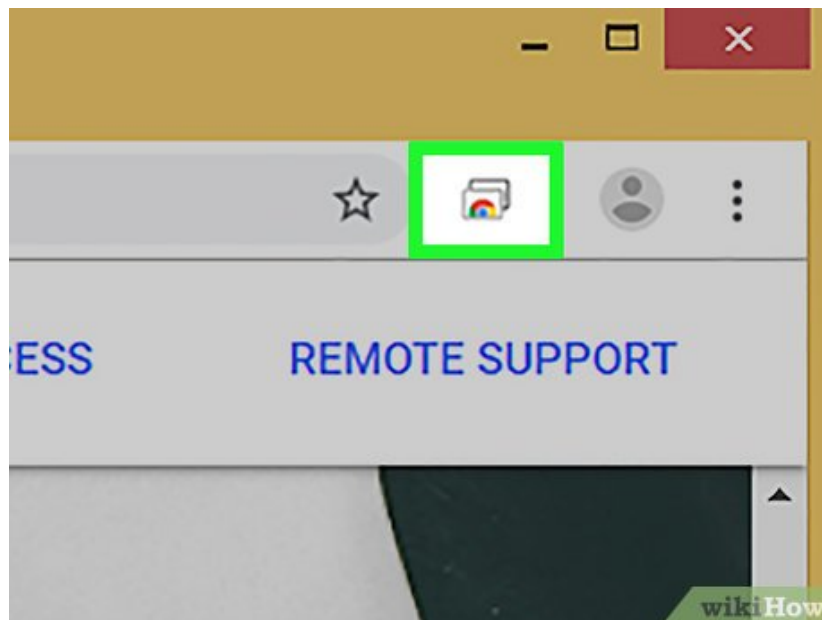
Install the Chrome Remote Desktop app. Go to the web store in Chrome and install the app as detailed earlier in this section.

17.

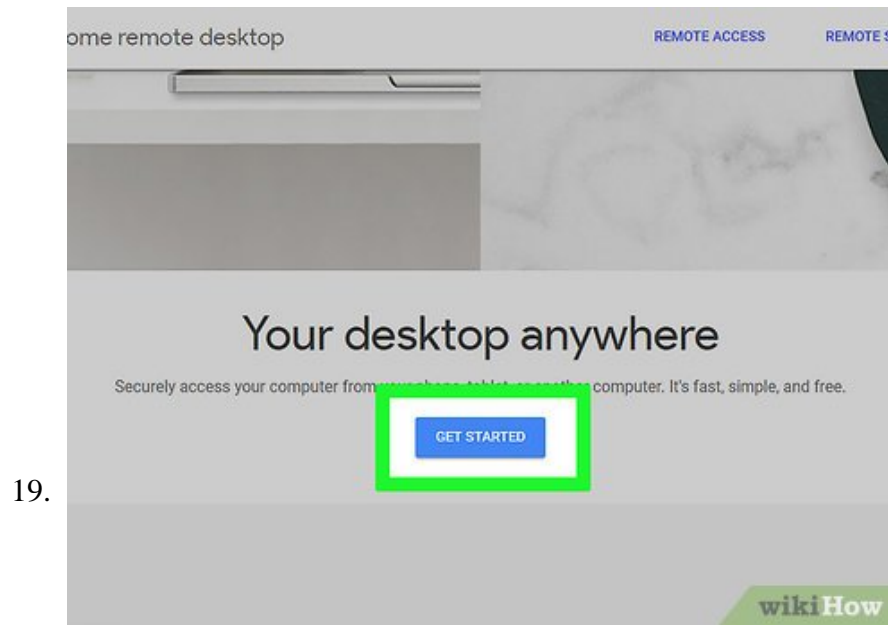


Visit `chrome://apps` in your Chrome browser. This display the list of apps you have installed.

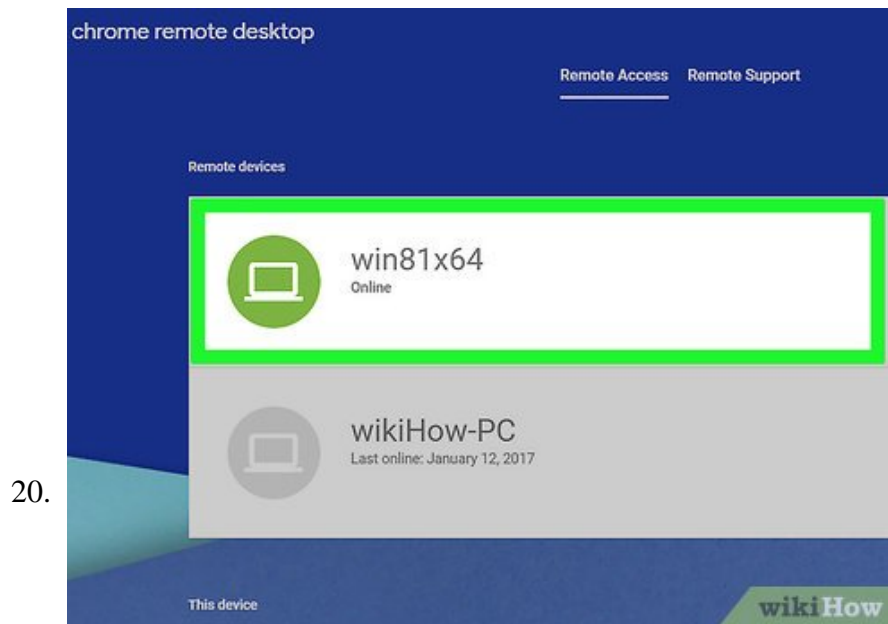
18.



Click the **Chrome Remote Desktop** app.



Click **Get Started**. You'll see this in the My Computers section.



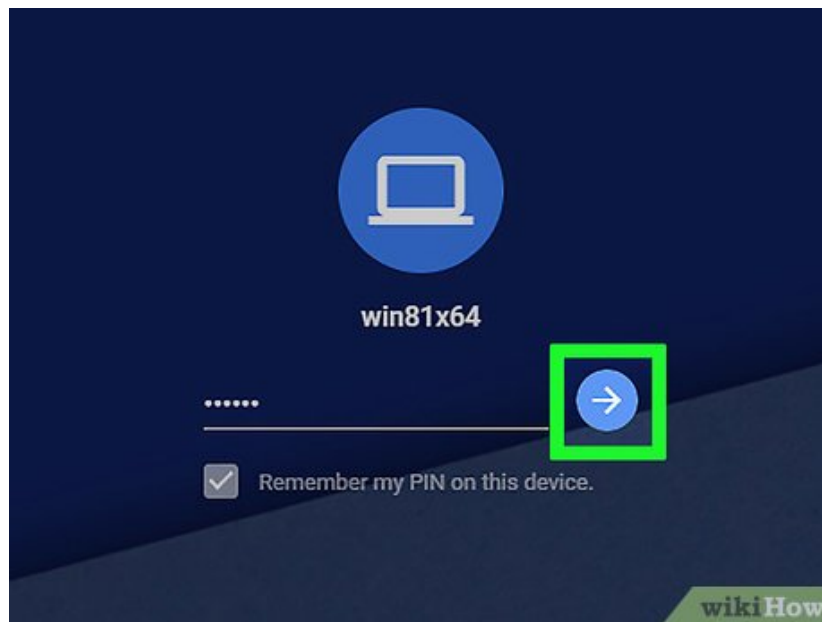
Click the computer you want to connect to. You'll see the computer that you set Chrome Remote Desktop up on earlier.

21.



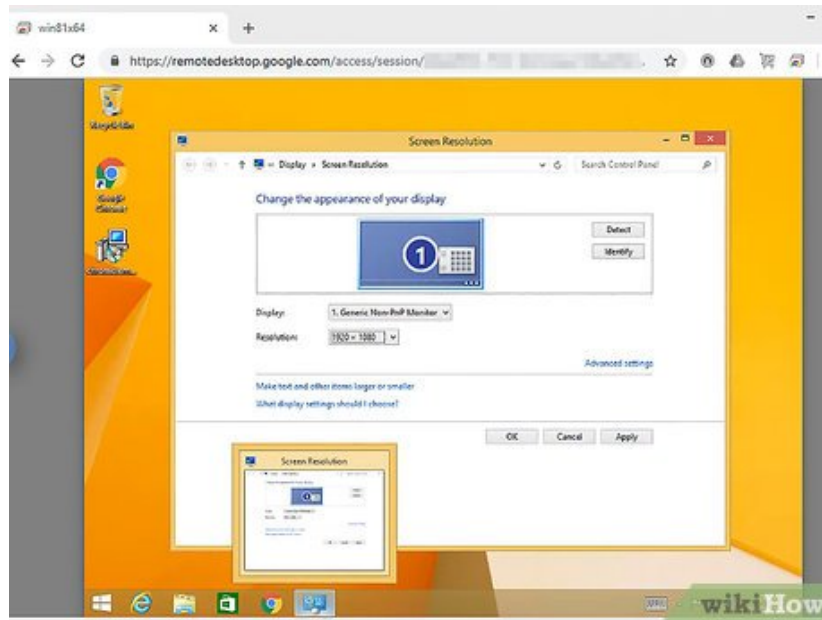
Type the PIN that you created.

22.



Click **Connect**.

23.



Use the computer remotely. You'll have full control over the remote computer inside your Chrome browser window.

You finished reading the article "**How to Use Remote Desktop on Windows 8**" edited by the [TipsMake](#) team. We hope this article has provided you with many useful tech tips and tricks. You can search for similar articles on tips and guides. Thank you for reading and for following us regularly.